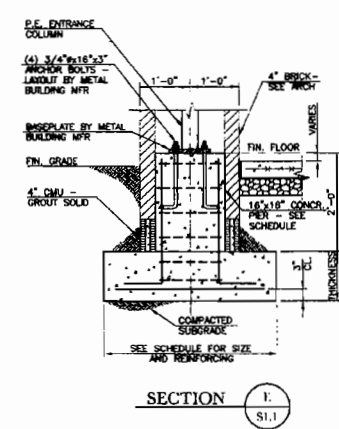
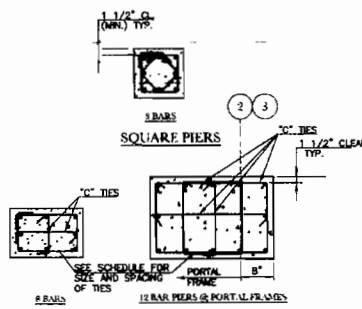


COLUMN AND FOUNDATION SCHEDULE									
MARK	LOAD KIPS.	COLUMN		PIER		FOOTING		REIN. E.W.	NOTES.
		SIZE	BASE PLATE	SIZE	VERT. REINF.	SIZE	DEPTH		
M-2		P.E.	P.E.	18"x18"	Ø8@	8"	4'-0"x4'-0"	12"	Ø4
M-2.5		P.E.	P.E.	18"x18"	Ø8@	8"	4'-0"x4'-0"	12"	Ø4
A-1		P.E.	P.E.	20"x18"	Ø8@	8"	8'-0"x8'-0"	24"	Ø4
A-2		P.E.	P.E.	20"x30"	12Ø7	8"	8'-0"x8'-0"	30"	Ø4
A-2.5		P.E.	P.E.	18"x18"	Ø8@	8"	4'-0"x4'-0"	12"	Ø4
A-3		P.E.	P.E.	20"x30"	12Ø7	8"	8'-0"x8'-0"	30"	Ø4
A-4		P.E.	P.E.	20"x18"	Ø8@	8"	8'-0"x8'-0"	24"	Ø4
B-1		P.E.	P.E.	18"x18"	Ø8@	8"	8'-0"x8'-0"	12"	Ø4
B-4		P.E.	P.E.	18"x18"	Ø8@	8"	8'-0"x8'-0"	12"	Ø4
C-1		P.E.	P.E.	18"x18"	Ø8@	8"	8'-0"x8'-0"	12"	Ø4
C-4		P.E.	P.E.	18"x18"	Ø8@	8"	8'-0"x8'-0"	12"	Ø4
D-1		P.E.	P.E.	20"x18"	Ø8@	8"	8'-0"x8'-0"	24"	Ø4
D-2		P.E.	P.E.	20"x30"	12Ø7	8"	8'-0"x8'-0"	30"	Ø4
D-3		P.E.	P.E.	20"x30"	12Ø7	8"	8'-0"x8'-0"	30"	Ø4
D-4		P.E.	P.E.	20"x18"	Ø8@	8"	8'-0"x8'-0"	24"	Ø4



RECTANGULAR PIERS
CONCRETE PIER DETAILS

NOTES:
 1. SEE SCHEDULE & SECTIONS FOR PIER SIZE & REINFORCING.
 2. TERMINATE VERTICAL BARS IN FOOTING WITH 90° HOOK (12) BAR DIAMETERS (MIN).
 3. ALTERNATE LOCATION OF 90° AND 135° BENDS.
 4. ALL PIERS TO BE BOARD FORMED.
 5. TOP OF PIERS SHALL AT FINISHED FLOOR U.H.



JEFFERSON CITY HS SPORTS FACILITY
 GEORGIA
 JAMES W. BUCKLEY & ASSOCIATES INC. ARCHITECTS
 SAVANNAH, ALBANY, DORCE AND SAVANNAH

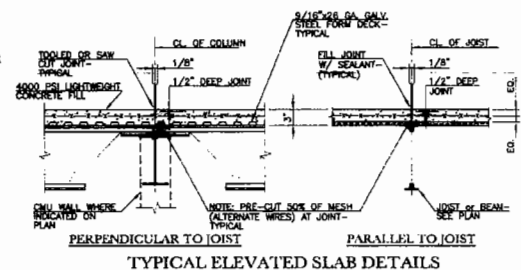
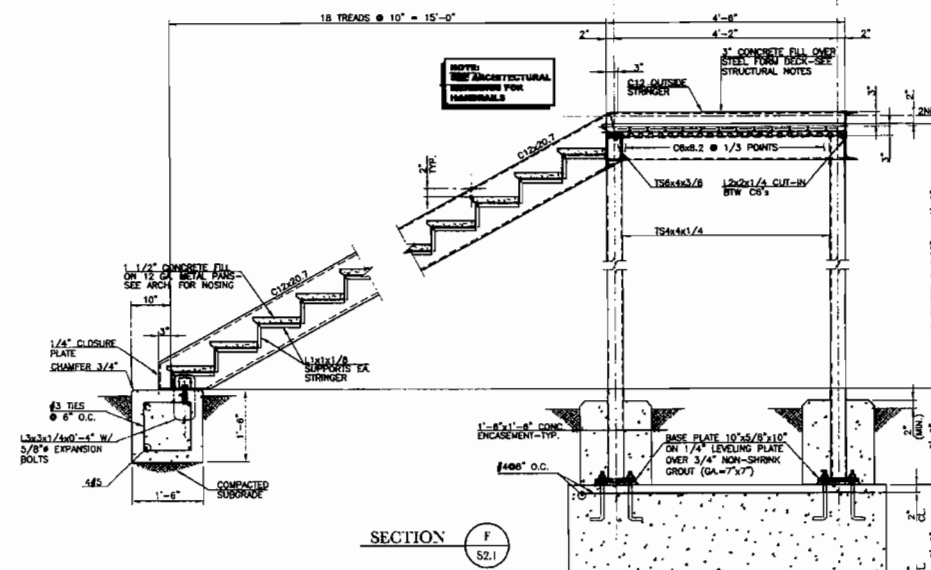
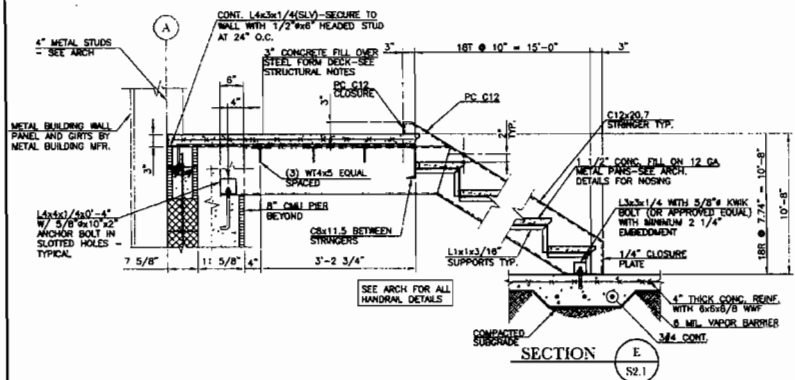
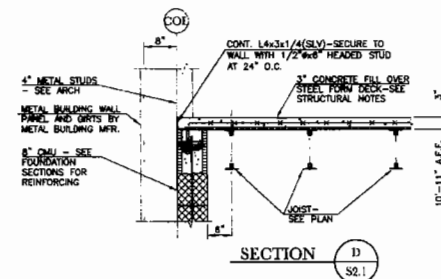
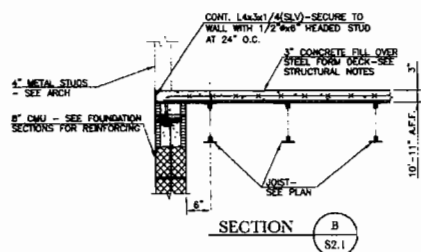
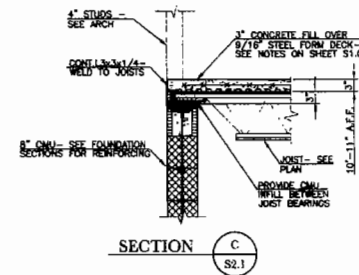
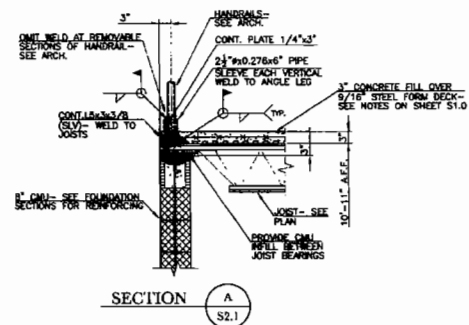
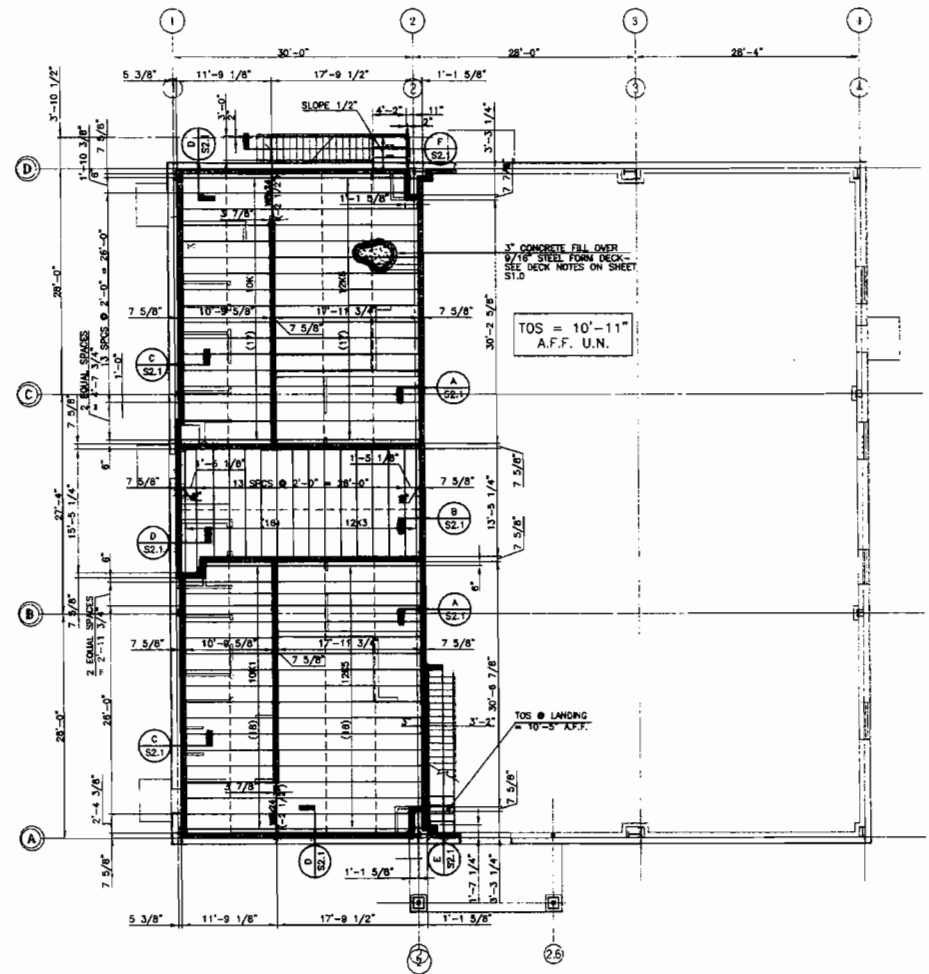


ISSUED FOR	
BY	
DATE	
REVISION	
NO.	
DATE	
BY	
DATE	
BY	
DATE	

S1.1

W. HUNTER SALUSSY III, P.E.
 405 KENNEDY AVENUE
 P.O. BOX 2091
 SAVANNAH, GEORGIA 31110
 PROJECT NO. 09110
 PLOTTED: 11:41 AM 4/18/07 11:51 AM

To Order Plans Go To WWW.LDILLINE.COM

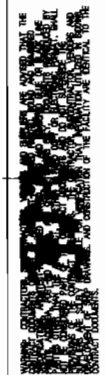


- TYPICAL ELEVATED SLAB DETAILS**
- N.T.S.
- SLAB JOINTING NOTES:
1. ALL ELEVATED SLABS (EXCEPT COMPOSITE SLABS) SHALL BE JOINTED PER THIS DETAIL. SAW CUT JOINTS AS SOON AS CONCRETE HAS CURED SUFFICIENTLY TO ALLOW CONSTRUCTION TRAFFIC ON SLAB.
 2. JOINTS SHALL BE PROVIDED AT CENTERLINES OF ALL COLUMNS IN BOTH DIRECTIONS. WHERE COLUMN GRID DIMENSIONS EXCEED 25 FEET, ADD INTERMEDIATE JOINT BETWEEN COLUMNS.
 3. WHERE JOINTS ARE SUPPORTED ON WALLS (NON-STEEL FRAMED STRUCTURES), PROVIDE SPACING OF JOINTS TO RESULT IN A MAXIMUM SLAB AREA BETWEEN JOINTS OF 400 SQUARE FEET.
 4. IN NO CASE SHALL SLABS BE JOINTED SUCH THAT THE JOINT SPACING IN ONE DIRECTION EXCEEDS THE JOINT SPACING IN THE OPPOSITE DIRECTION BY A RATIO OF 2:1.

W. HUNTER SAUSSY III, P.C.
 408 JIMMY HAWK RD
 P.O. BOX 1065
 SAUTTER, GEORGIA 31140
 PROJECT NO. 0510
 PLOTTED 02/14/07 4:18:07 11.24 in

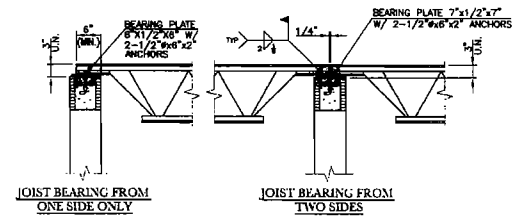


JEFFERSON CITY HS SPORTS FACILITY
 GEORGIA
 JAMES W. BUCKLEY & ASSOCIATES INC. ARCHITECTS
 SWANBORO, ALABAMA, MOBILE AND SAVANNAH



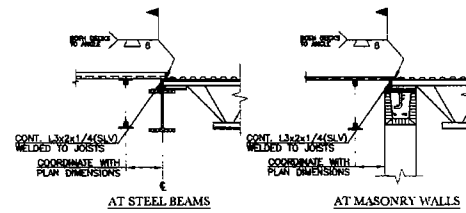
DESIGNED BY	SD
CHECKED BY	SD
DATE	02/14/07
PROJECT NO.	0510
DATE	02/14/07
SCALE	AS SHOWN

S2.1

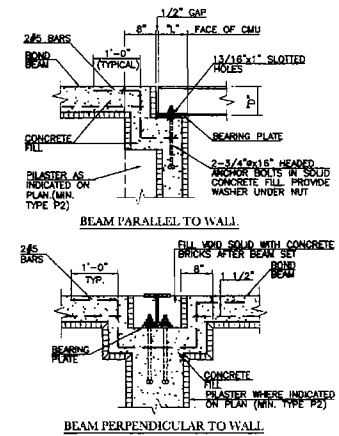


TYPICAL DETAILS FOR JOISTS BEARING ON MASONRY WALLS

- NOTE:
1. WHERE DOUBLE JOIST (DJ) INDICATED ON PLAN, INCREASE PLATE DIMENSION PARALLEL TO WALL TO 12" (MIN.) AND PROVIDE (3) 1/2"x8"x2" ANCHORS.
 2. EXTEND JOIST BOTTOM CHORDS TO 1/2" FROM FACE OF WALL WHERE REQ'D. FOR CEILING SUPPORT. COORDINATE WITH ARCHITECTURAL DRAWINGS.
 3. WHERE JOIST BEARING ON ONE SIDE ONLY OCCURS ON 1/2" CHG. EDGE OF BEARING PLATE SHALL BE MAXIMUM 1/2" FROM JOIST SIDE OF WALL.
 4. WHERE CHANNEL BLOCK TYPE BOND BEAMS ARE SHOWN CHANGE ANCHORS TO 1/2"x8"x2".



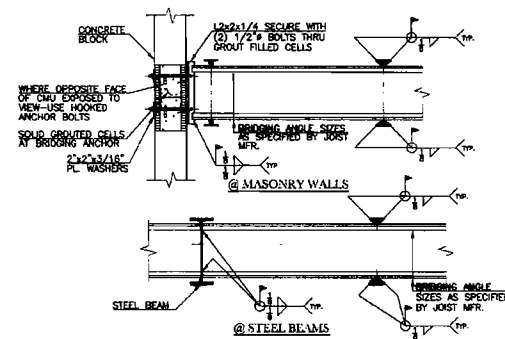
TYPICAL DETAIL AT CHANGES IN DECK DIRECTION



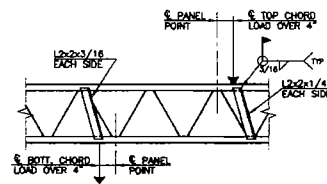
"D"	"L"	PLATE
TO 8'	8'	7 1/2"x1/2"x7 1/2"
9'-12'	18"	7 1/2"x5/8"x1'-0"
14'-18'	18"	7 1/2"x3/4"x1'-2"

TYPICAL BEAM BEARING ON WALL
(UNLESS DETAILED OTHERWISE)

- NOTES:
1. NUTS SHALL BE HAND TIGHT ONLY.
 2. PROVIDE LAYER OF 30 LB. BLDG. FELT BETWEEN BEAM AND BEARING PLATE.



BRIDGING ANCHORS FOR K-SERIES JOISTS



TYPICAL JOIST WEB REINFORCING AT CONCENTRATED LOADS



JEFFERSON CITY HS SPORTS FACILITY
 GEORGIA
JAMES W. BUCKLEY & ASSOCIATES INC. ARCHITECTS
 SHAWNEEN, ALABAMA, TREC AND SWANNAH



SEAL FOR
 ID
 CC
 DRAWN BY
 JUN
 CHECKED BY
 WJS II
 APPROVED BY
 MAY 11, 2007
 CIV
 SHEET NO.
 PROJECT NO.

54.2

W. HUNTER SAUSSY III, PE
 1006 JOHN W. HERRICK BLVD
 SAVANNAH, GEORGIA 31410
 PROJECT NO. 05110
 PLOTTER: 54-2.dwg 4/18/07 1:30 pm