

**LEGEND**

REMOVE	EXISTING	
[Hatched Box]	[Empty Box]	STRUCTURE
[Hatched Box]	[Empty Box]	ASPHALT PAVEMENT
[Hatched Box]	[Empty Box]	CONCRETE PAVEMENT
[Hatched Box]	[Empty Box]	CONCRETE CURB AND GUTTER
[Hatched Box]	[Empty Box]	WALK
[Hatched Box]	[Empty Box]	STORM DRAIN
[Hatched Box]	[Empty Box]	SANITARY SEWER
[Hatched Box]	[Empty Box]	WATER LINE
[Hatched Box]	[Empty Box]	TELEPHONE LINE
[Hatched Box]	[Empty Box]	UNDERGROUND TELEPHONE LINE
[Hatched Box]	[Empty Box]	POWER POLE W/LIGHT
[Hatched Box]	[Empty Box]	UNDERGROUND POWER
[Hatched Box]	[Empty Box]	UNDERGROUND SIGNAL
[Hatched Box]	[Empty Box]	GAS LINE
[Hatched Box]	[Empty Box]	MANHOLE
[Hatched Box]	[Empty Box]	INLET
[Hatched Box]	[Empty Box]	VALVE
[Hatched Box]	[Empty Box]	TREE
[Hatched Box]	[Empty Box]	CONTOUR
[Hatched Box]	[Empty Box]	FIRE HYDRANT
[Hatched Box]	[Empty Box]	DITCH OR SWALE
[Hatched Box]	[Empty Box]	ROOF DRAIN
[Hatched Box]	[Empty Box]	CLEANOUT
[Hatched Box]	[Empty Box]	FENCE
[Hatched Box]	[Empty Box]	HEADWALL
[Hatched Box]	[Empty Box]	WHEEL BUMPERS



JEFFERSON CITY HIGH SCHOOL  
SPORTS COMPLEX  
GEORGIA  
ARCHITECTS, CIVIL ENGINEERS  
JAMES W. BUCKLEY & ASSOCIATES INC. - ARCHITECTS, CIVIL ENGINEERS  
SAVANNAH, ALBANY, ROME, AND SWANSEA

NOTE: CONTRACTOR SHALL VERIFY ALL UTILITIES AND RECORD DRAWINGS. THE CONTRACTOR SHALL BE RESPONSIBLE FOR OBTAINING ALL NECESSARY PERMITS AND EASEMENTS. THE CONTRACTOR SHALL MAINTAIN ALL EXISTING UTILITIES AND RECORD DRAWINGS. THE CONTRACTOR SHALL MAINTAIN ALL EXISTING UTILITIES AND RECORD DRAWINGS.

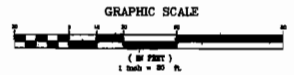
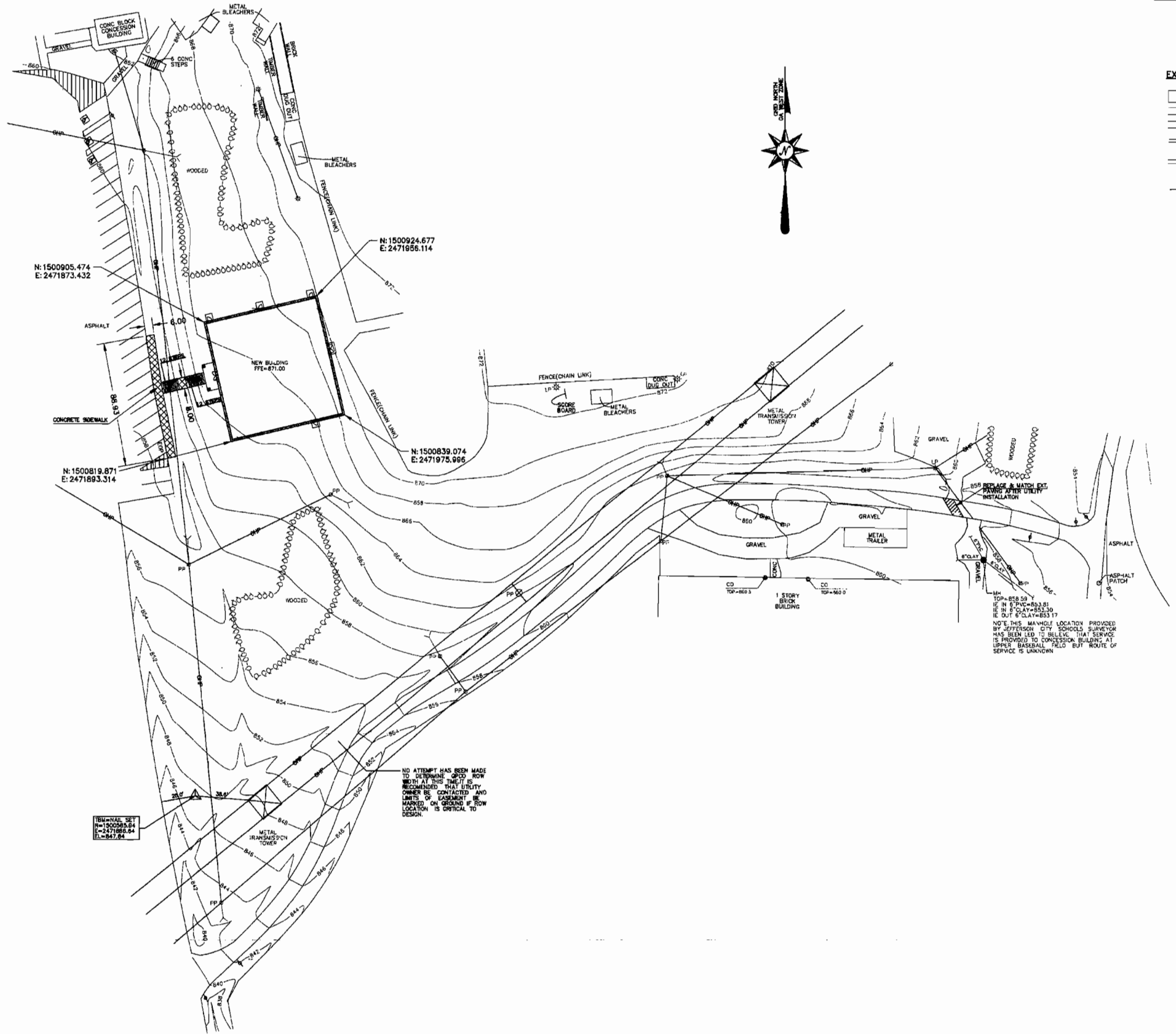


ISSUED FOR PRELIMINARY  
YYS  
SMB  
SMB  
MAY 10, 2007  
124-05

C1.1  
OF SHEETS

GRANTY ENGINEERS, P.C.  
7385 HODGSON MEMORIAL DRIVE  
SAVANNAH, GEORGIA 31406  
SE PROJECT NO. V280701

To Order Plans Go To [WWW.LDILLINE.COM](http://WWW.LDILLINE.COM)



**LEGEND**

EXISTING	NEW	
[Symbol]	[Symbol]	STRUCTURE
[Symbol]	[Symbol]	ASPHALT PAVEMENT
[Symbol]	[Symbol]	CONCRETE PAVEMENT
[Symbol]	[Symbol]	CONCRETE CURB AND GUTTER
[Symbol]	[Symbol]	WALK
[Symbol]	[Symbol]	TREE
[Symbol]	[Symbol]	FENCE
[Symbol]	[Symbol]	WHEEL BUMPERS



N: 1500905.474  
E: 2471873.432

N: 1500924.677  
E: 2471686.114

N: 1500819.871  
E: 2471893.314

N: 1500839.074  
E: 2471975.966

NOTE: THIS MANHOLE LOCATION PROVIDED BY JEFFERSON CITY SCHOOLS SUPERVISOR HAS BEEN LED TO BELIEVE THAT SERVICE IS PROVIDED TO CONCESSION BUILDING AT UPPER BASEBALL FIELD BUT ROUTE OF SERVICE IS UNKNOWN

NO ATTEMPT HAS BEEN MADE TO DETERMINE GRID ROW WIDTH AT THIS TIME. IT IS RECOMMENDED THAT UTILITY OWNERS BE CONTACTED AND LIMITS OF EASEMENT BE MARKED ON GROUND IF ROW LOCATION IS CRITICAL TO DESIGN.

BM=HAL SET  
N=1500839.04  
E=2471982.84  
EL=847.84



JEFFERSON CITY HIGH SCHOOL  
SPORTS COMPLEX  
JEFFERSON  
JAMES W. BUCKLEY & ASSOCIATES INC. - ARCHITECTS, CIVIL ENGINEERS  
SAVANNAH, ALBANY, ROME AND SUMNERVILLE, GEORGIA

THIS DOCUMENT IS THE PROPERTY OF JAMES W. BUCKLEY & ASSOCIATES, INC. IT IS TO BE USED ONLY FOR THE PROJECT AND SITE SPECIFICALLY IDENTIFIED HEREON. IT IS NOT TO BE REPRODUCED, COPIED, OR TRANSMITTED IN ANY FORM OR BY ANY MEANS, ELECTRONIC OR MECHANICAL, INCLUDING PHOTOCOPYING, RECORDING, OR BY ANY INFORMATION STORAGE AND RETRIEVAL SYSTEM, WITHOUT THE WRITTEN PERMISSION OF JAMES W. BUCKLEY & ASSOCIATES, INC.



RESD FOR PRELIMINARY

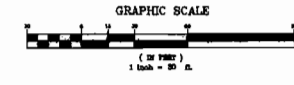
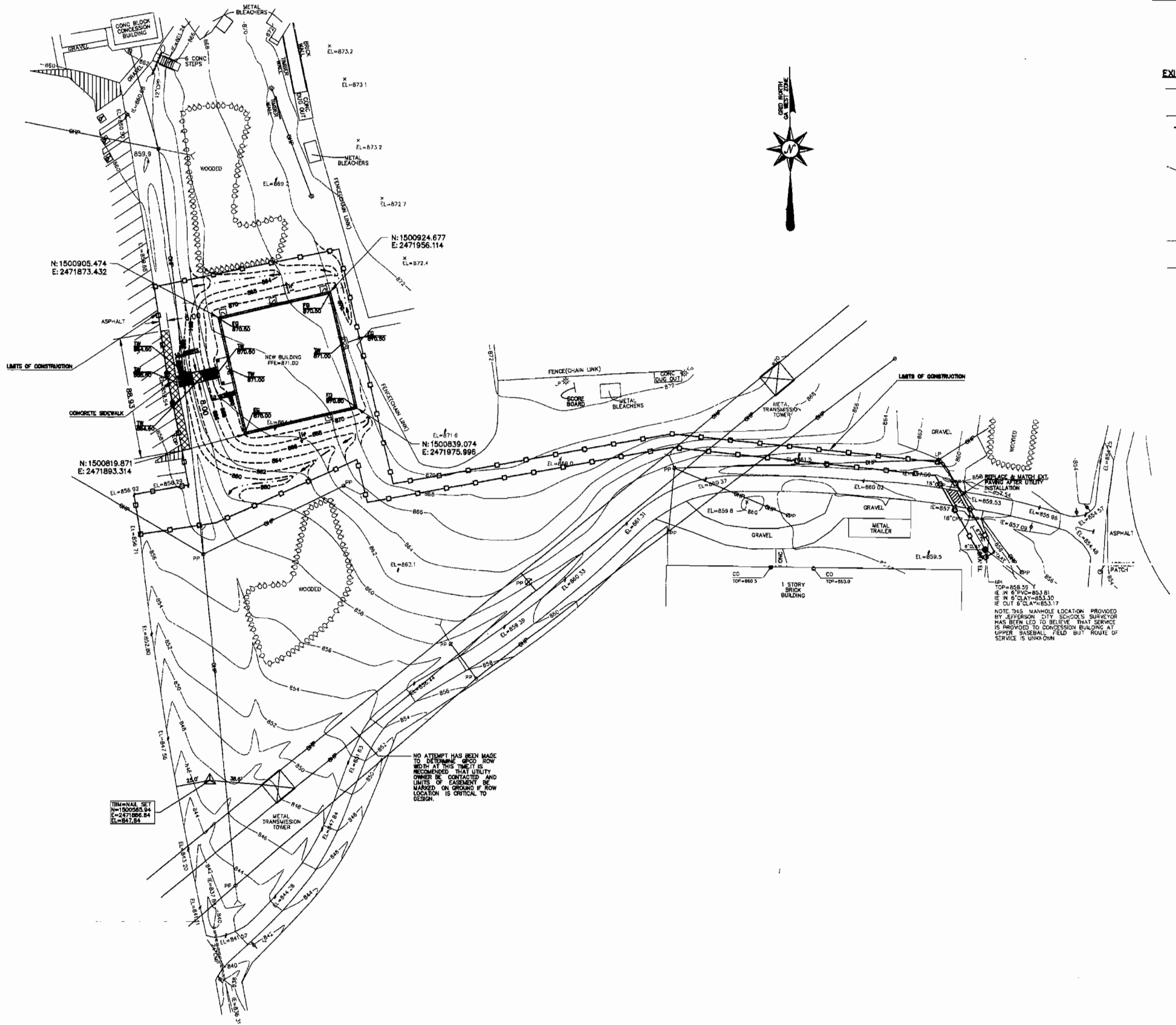
YYS  
SMB  
SMB  
MAY 10, 2007  
124-05

C1.2  
OF SHEETS

**GRABBY ENGINEERS, P.C.**  
7395 HODGSON MEMORIAL DRIVE  
SAVANNAH, GEORGIA 31406  
SE PROJECT NO. V290701



To Order Plans Go To [WWW.LDILLINE.COM](http://WWW.LDILLINE.COM)



**LEGEND**

EXISTING	NEW	
—	—	STORM DRAIN
○	○	TREE
—	—	FENCE
—	—	WHEEL BUMPERS
○	●	MANHOLE
□	■	INLET
—	—	CONTOUR
—	—	T.P. 34.56 TOP OF PAVEMENT
—	—	T.W. 34.56 TOP OF WALK
—	—	F.G. 34.56 FINISHED GRADE
—	—	I.E. 34.56 INVERT ELEVATION
—	—	DITCH OR SWALE
—	—	ROOF DRAIN
—	—	CLEANOUT
—	—	HEADWALL



N: 1500905.474  
E: 2471873.432

N: 1500924.677  
E: 2471956.114

N: 1500819.871  
E: 2471893.314

N: 1500839.074  
E: 2471975.996

TRM=NAI, SE 1  
N=1500862.84  
E=2471892.84  
E=2471847.84

NO ATTEMPT HAS BEEN MADE TO DETERMINE WHOSE ROW RIGHT AT THIS TIME IT IS RECOMMENDED THAT UTILITY OWNER BE CONTACTED AND LIMITS OF EASEMENT BE MARKED ON GROUND IF ROW LOCATION IS CRITICAL TO DESIGN.

NOTE THIS MANHOLE LOCATION PROVIDED BY JEFFERSON CITY SCHOOLS SURVEYOR HAS BEEN LED TO BELIEVE THAT SERVICE IS PROVIDED TO CONCESSION BUILDING AT UPPER BASEBALL FIELD BUT ROUTE OF SERVICE IS UNKNOWN



JEFFERSON CITY HIGH SCHOOL  
SPORTS COMPLEX  
ARCHITECTS, CIVIL ENGINEERS  
SAVANNAH, GEORGIA

CONTRACT NO. 1500819.871  
SHEET NO. 124-05  
DATE: MAY 10, 2007



ISSUED FOR PRELIMINARY

YYS  
SMB  
SMB  
MAY 10, 2007  
124-05

C1.3

OF SHEETS

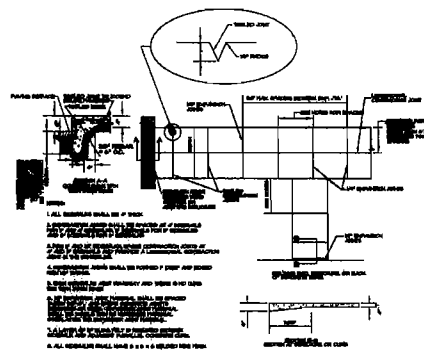
BRADY ENGINEERING, LLC  
7395 HODGSON MEMORIAL DRIVE  
SAVANNAH, GEORGIA 31406  
SE PROJECT NO. V290701



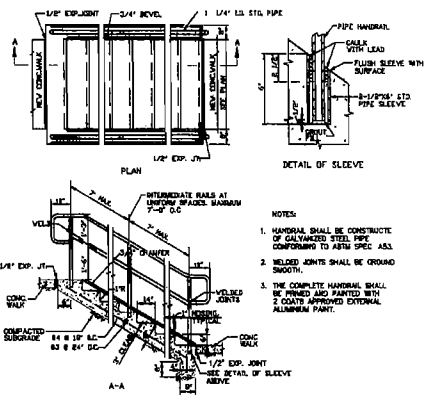
To Order Plans Go To [WWW.LDILLINE.COM](http://WWW.LDILLINE.COM)



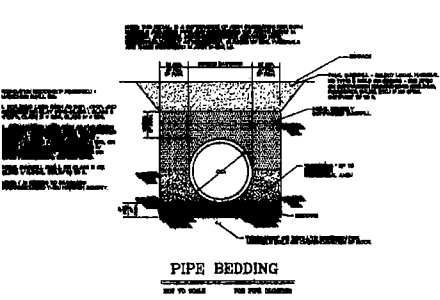




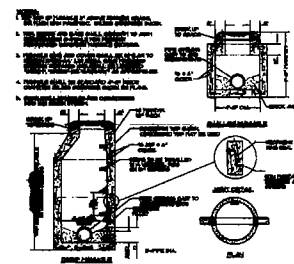
**CONCRETE SIDEWALK**  
NOT TO SCALE



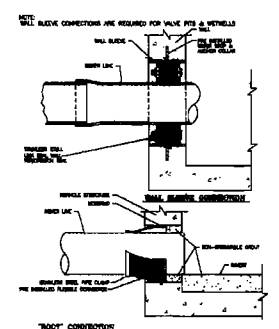
**DETAIL - TYPICAL CONCRETE STEP WITH MANHOLE**  
NOT TO SCALE



**PIPE BEDDING**  
NOT TO SCALE

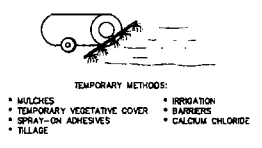


**PRECAST CONCRETE MANHOLE**  
NOT TO SCALE

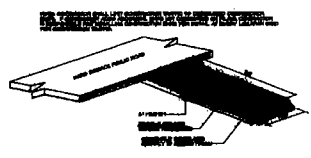


**PRECAST STRUCTURE PIPE CONNECTIONS**  
NOT TO SCALE

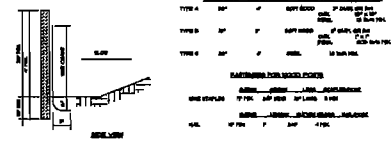
CONTROLLING DUST AT THE SITE



**Dust Control ON Disturbed Areas** Du  
NOT TO SCALE



**CONSTRUCTION EXIT**  
NOT TO SCALE



**SILT FENCE DETAIL**  
NOT TO SCALE

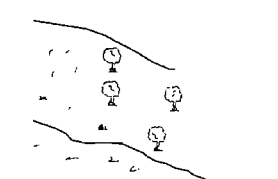
ESTABLISHING A TEMPORARY VEGETATIVE COVER WITH FAST GROWING SEEDS



• ≤ 12 MONTHS OR UNTIL ESTABLISHMENT OF FINISHED GRADE OR PERMANENT VEGETATION  
• SITE PREPARATION  
• GRADING AND SHAPING  
• SEEDBED PREPARATION  
• APPLY LIME AND FERTILIZER  
• PLANT SEEDING, SELECT SPECIES BY SEASON  
• APPLY MULCHING MATERIAL IF NEEDED  
• IRRIGATE IF NEEDED BUT NOT AT RATE TO CAUSE EROSION

**Disturbed Area Stabilization** (With Temporary Seedings) Ds2  
NOT TO SCALE

ESTABLISHING A PERMANENT VEGETATIVE COVER AS A DISTURBED AREA



• APPLICABLE ON HIGHLY EROSION OR SEVERELY ERODED AREAS, SOMETIMES CALLED "CRITICAL AREAS" INCLUDING:  
• CUT OR FILL SLOPES • BORMS  
• EARTH SPILLWAYS • ROADSCIES  
• BORROW AREAS • SPILL AREAS  
• CHANNEL BANKS • CULLED LANDS

**Disturbed Area Stabilization** (With Permanent Vegetation) Ds3  
NOT TO SCALE

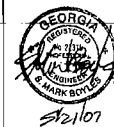
**EROSION CONTROL ACTIVITY SCHEDULE**  
Project Name: JEFFERSON CITY HIGH SCHOOL  
Project Number: 0207

ACTIVITY	JAN	FEB	MAR	APR	MAY	JUN	JUL	AUG	SEP	OCT	NOV	DEC	JAN	FEB	MAR	APR	MAY	
INITIAL EROSION CONTROL																		
CLEARING AND GRUBBING																		
GRAZING AND DRAINAGE																		
BUILDING CONSTRUCTION																		
UTILITIES																		
INTERMEDIATE EROSION CONTROL																		
PAVING																		
LANDSCAPE/ FINAL EROSION CONTROL																		

1. THE DEGREE OF EROSION FROM THE SITE SHALL BE PREVENTED BY THE INSTALLATION OF EROSION CONTROL MEASURES AND PRACTICES.  
2. THE INSTALLATION OF EROSION CONTROL MEASURES AND PRACTICES SHALL OCCUR PRIOR TO OR CONCURRENT WITH LAND-DEVELOPING ACTIVITIES.



JEFFERSON CITY HIGH SCHOOL  
SPORTS COMPLEX  
JEFFERSON  
JAMES W. BUCKLEY & ASSOCIATES INC. - ARCHITECTS, CIVIL ENGINEERS  
SPRINGFIELD, ALABAMA, ROME, AND SAVANNAH, GEORGIA



ISSUED FOR PRELIMINARY  
BY  
CHECKED BY  
DATE  
MAY 10, 2007  
124-05

C2.1

OF SHEETS

**SAABY ENGINEERING, LLC**  
7395 HODGSON MEMORIAL DRIVE  
SAVANNAH, GEORGIA 31406  
SE PROJECT NO. V290701



To Order Plans Go To [WWW.LDILLINE.COM](http://WWW.LDILLINE.COM)