



Architects, p.a.

ADW Architects, p.a.
1401 West Morehead Street, Suite 100
Charlotte, NC 28208
704.378.1919 Fax 704.378.1920
www.edwarchitects.com

Ballantyne Commons Storage Facility

dmi

CHARLOTTE, NC

VLETOS PAPPAS
Consulting Engineers, P.A.
101 N. McDowell St.
Suite 120
Charlotte, NC 28204
(704) 372-7755
(704) 372-7759
www.vpce.com

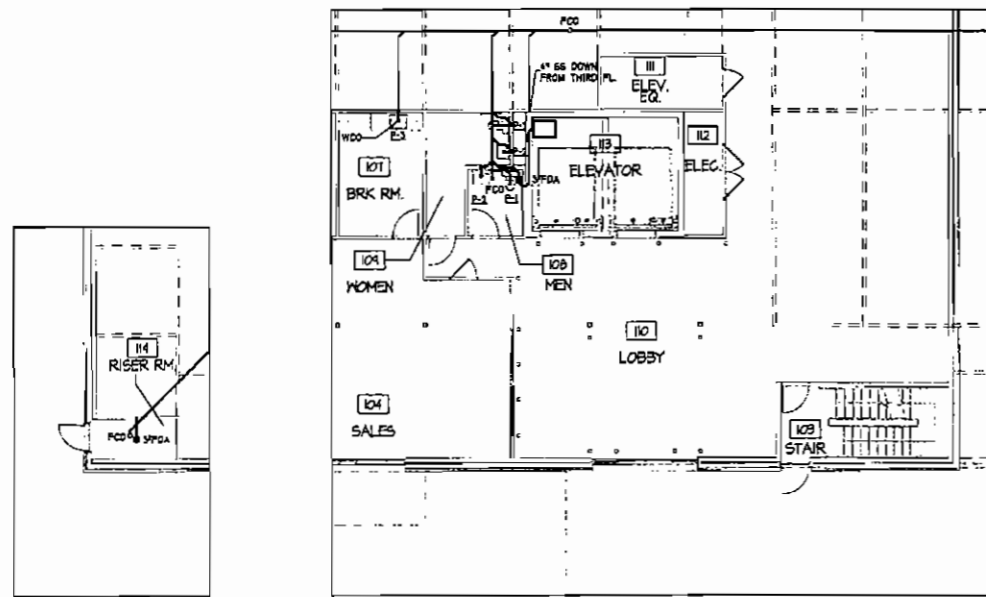
FIRST FLOOR PLUMBING PLAN AND LEGEND

DATE:	05/09/07	JOB NO.:	07051
REVISIONS:			
NO. DATE	DESCRIPTION		
05/07	FOR PUNCH ONLY		

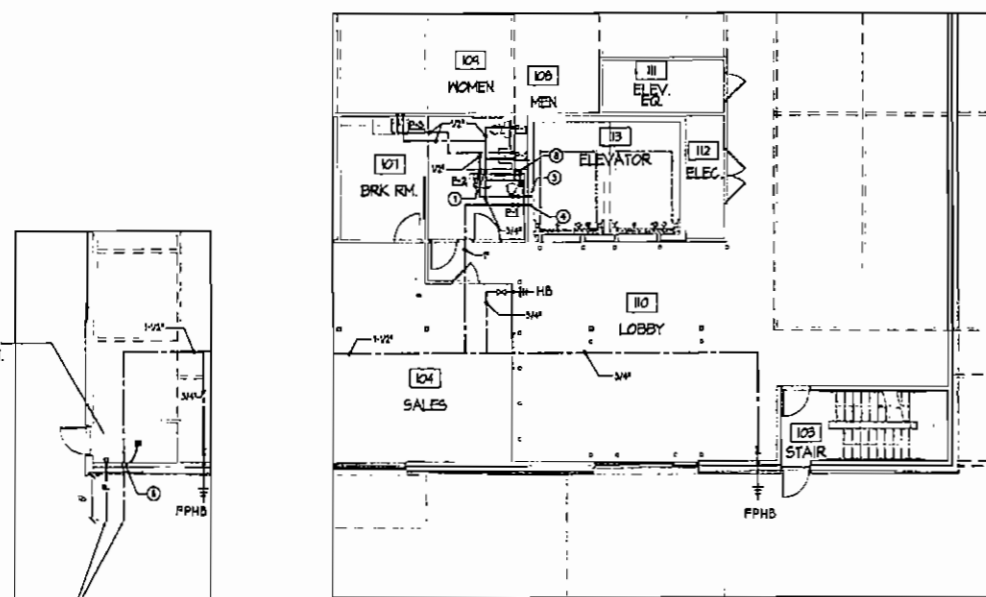
SEAL
627900

PROJECT NUMBER
P1

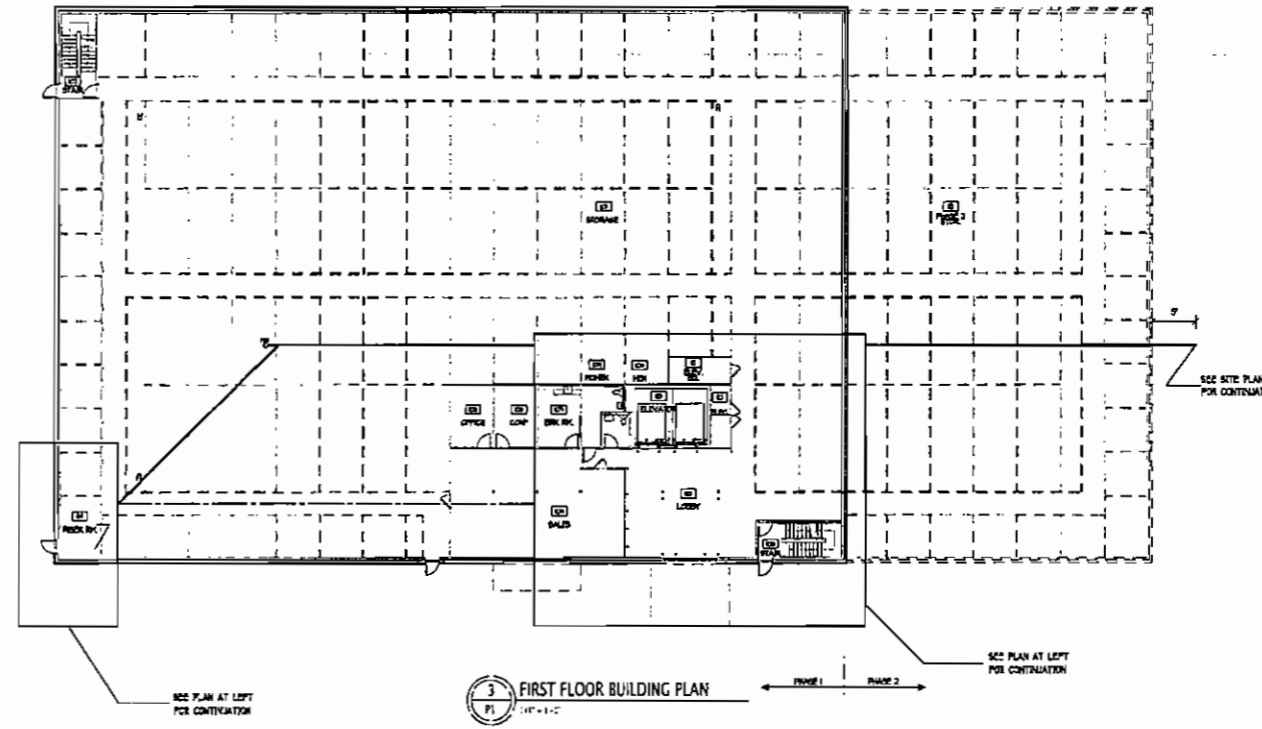
1 of 5 Total



1 FIRST FLOOR PARTIAL SANITARY WASTE PLAN
1/4" = 1'-0"



2 FIRST FLOOR PARTIAL WATER SUPPLY PLAN
1/4" = 1'-0"



3 FIRST FLOOR BUILDING PLAN
1/4" = 1'-0"

- CONSTRUCTION NOTES**
- 1/2" HW & CW DOWN TO P-1
 - 1/2" HW DOWN TO FIRST FLOOR
 - 1/2" HW DOWN FROM THIRD FLOOR
 - P CW UP TO SECOND FLOOR
 - P CW UP FROM FIRST FLOOR
 - P CW UP FROM SECOND FLOOR
 - 3/4" CW UP FROM THIRD FLOOR
 - TRAP PREMER VALVE - LOCATE IN ACCESSIBLE WALL BOX

PLUMBING DRAWING INDEX

P1	FIRST FLOOR PLUMBING PLAN AND LEGEND
P2	SECOND FLOOR PLUMBING PLAN
P3	THIRD FLOOR PLUMBING PLAN
P4	FOURTH FLOOR PLUMBING PLAN
P5	PLUMBING LEGEND, PICTURE SCHEDULE, DETAILS, NOTES AND RANCE DIAGRAM



Architects, p.a.

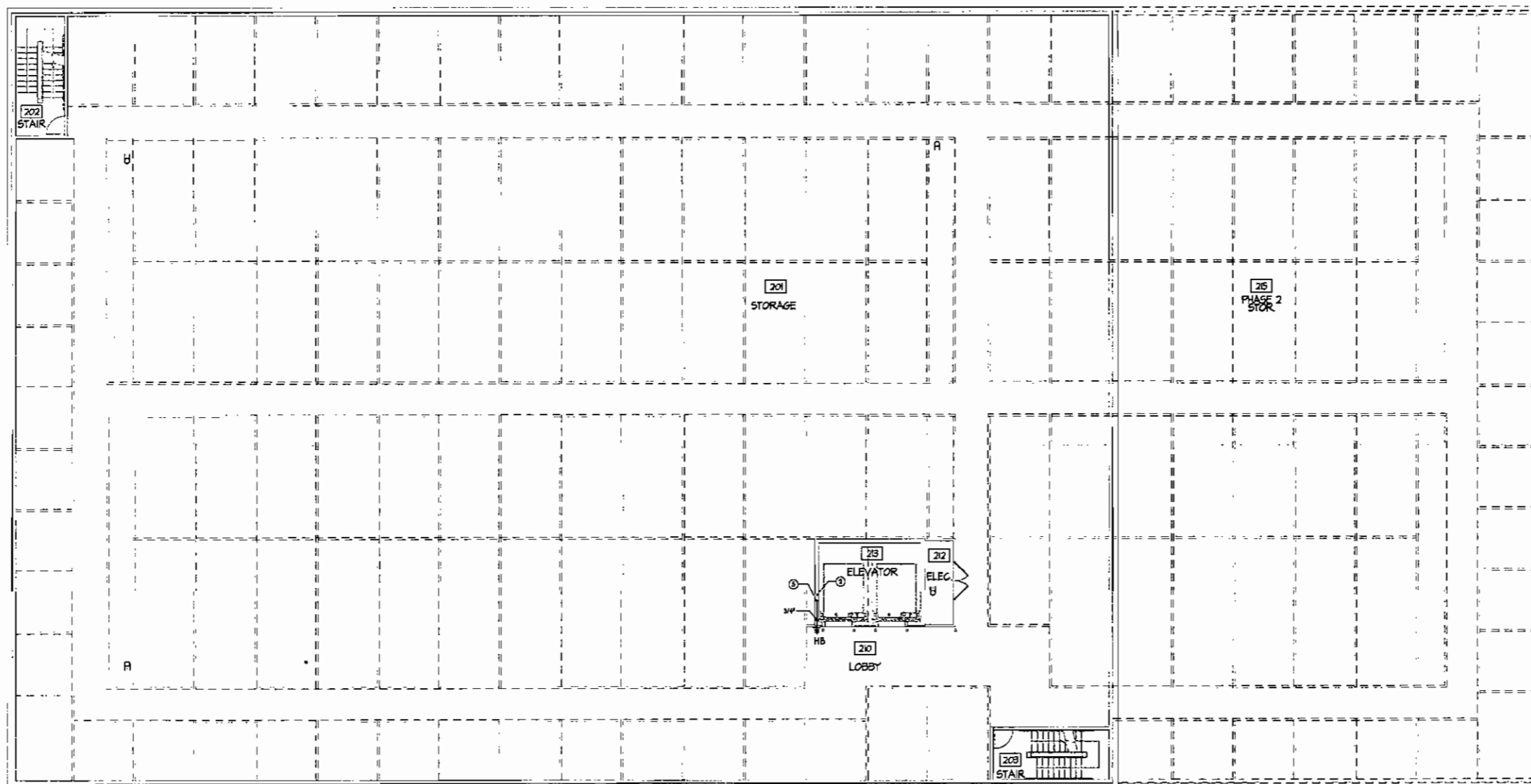
ADW Architects, p.a.
1401 West Morehead Street, Suite 100
Charlotte, NC 28208
704.379.1919 Fax 704.379.1920
www.adwarchitects.com



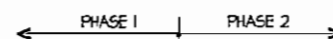
Ballantyne
Commons
Storage Facility

dmi

CHARLOTTE, NC



SECOND FLOOR BUILDING PLAN



- CONSTRUCTION NOTES
- ① 1/2" HW & CW DOWN TO P-1
 - ② 1/2" HW DOWN TO FIRST FLOOR
 - ③ 1/2" HW DOWN FROM THIRD FLOOR
 - ④ 1" CW UP TO SECOND FLOOR
 - ⑤ 1" CW UP FROM FIRST FLOOR
 - ⑥ 1" CW UP FROM SECOND FLOOR
 - ⑦ 3/4" CW UP FROM THIRD FLOOR
 - ⑧ TRAP PRIMER VALVE - LOCATE IN ACCESSIBLE WALL BOX

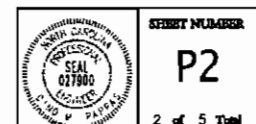


VLETOS PAPPAS
Consulting Engineers, PA
101 N. McDowell St.
Suite 120
Charlotte, NC 28204
704.372.7715
704.372.7799
www.vpce.com

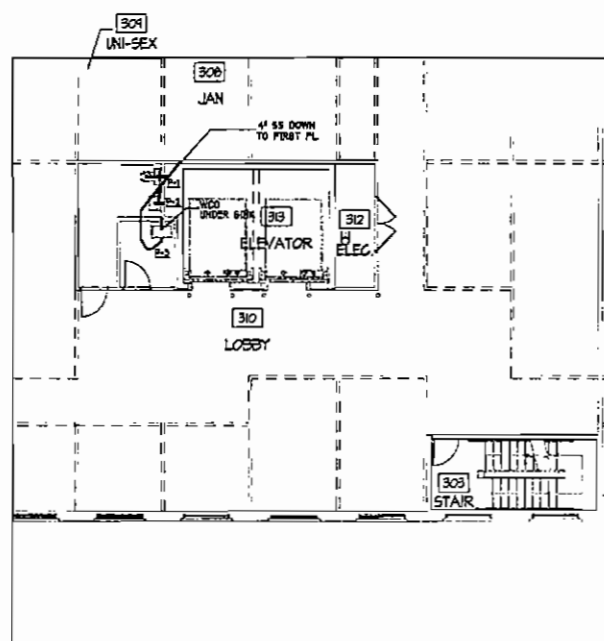
SECOND FLOOR
PLUMBING PLAN

DATE: 05/09/07 JOB NO: 07031

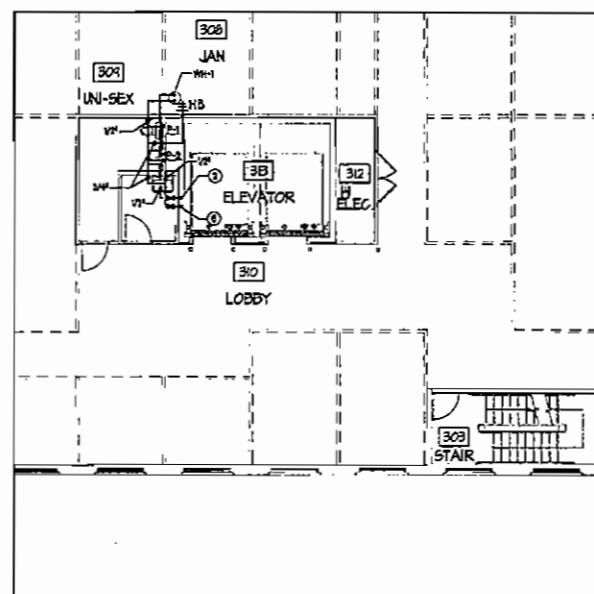
REVISIONS:
NO. DATE DESCRIPTION
05/09/07 FOR PENDING ONLY



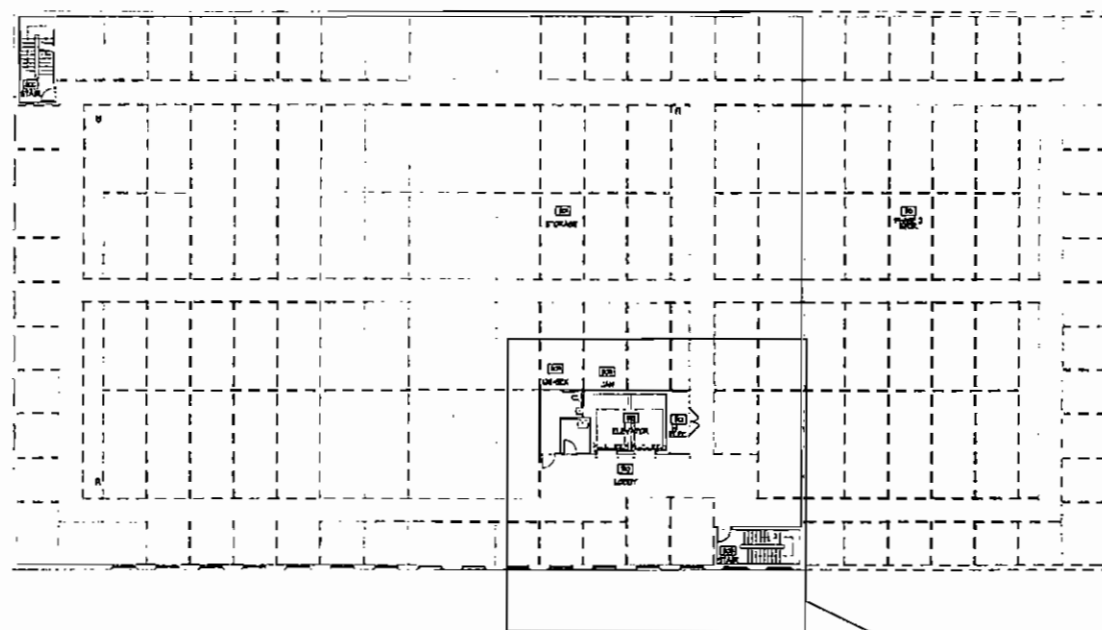
SHEET NUMBER
P2
2 of 5 Total



1 THIRD FLOOR SANITARY WASTE PLAN
P3 1/8" = 1'-0"



2 THIRD FLOOR WATER SUPPLY PLAN
P3 1/8" = 1'-0"



3 THIRD FLOOR BUILDING PLAN
P3 1/8" = 1'-0"

- CONSTRUCTION NOTES
- 1 1/2" HW & CW DOWN TO P-3
 - 2 1/2" HW DOWN TO FIRST FLOOR
 - 3 1/2" HW DOWN FROM THIRD FLOOR
 - 4 1" CW UP TO SECOND FLOOR
 - 5 1" CW UP FROM FIRST FLOOR
 - 6 1" CW UP FROM SECOND FLOOR
 - 7 3/4" CW UP FROM THIRD FLOOR
 - 8 TRAP PRIMER VALVE - LOCATE IN ACCESSIBLE WALL BOX

ADW
Architects, p.a.
ADW Architects, p.a.
1401 West Morehead Street, Suite 100
Charlotte, NC 28208
704.379.1919 Fax 704.379.1920
www.adwarchitects.com

Ballantyne Commons Storage Facility
dmi
CHARLOTTE, NC

VP
VLETOS PAPPAS
Consulting Engineers, PA
101 N. McDowell St.
Suite 110
Charlotte, NC 28204
(704) 372-7755
(704) 372-7799
www.vpcsa.com

THIRD FLOOR PLUMBING PLAN

DATE: 05/09/07 JOB NO: 07031

NO.	DATE	DESCRIPTION
04/06/07		FOR PRICING ONLY

SEAL
021900
P3
3 of 5 Total



Architects, p.a.

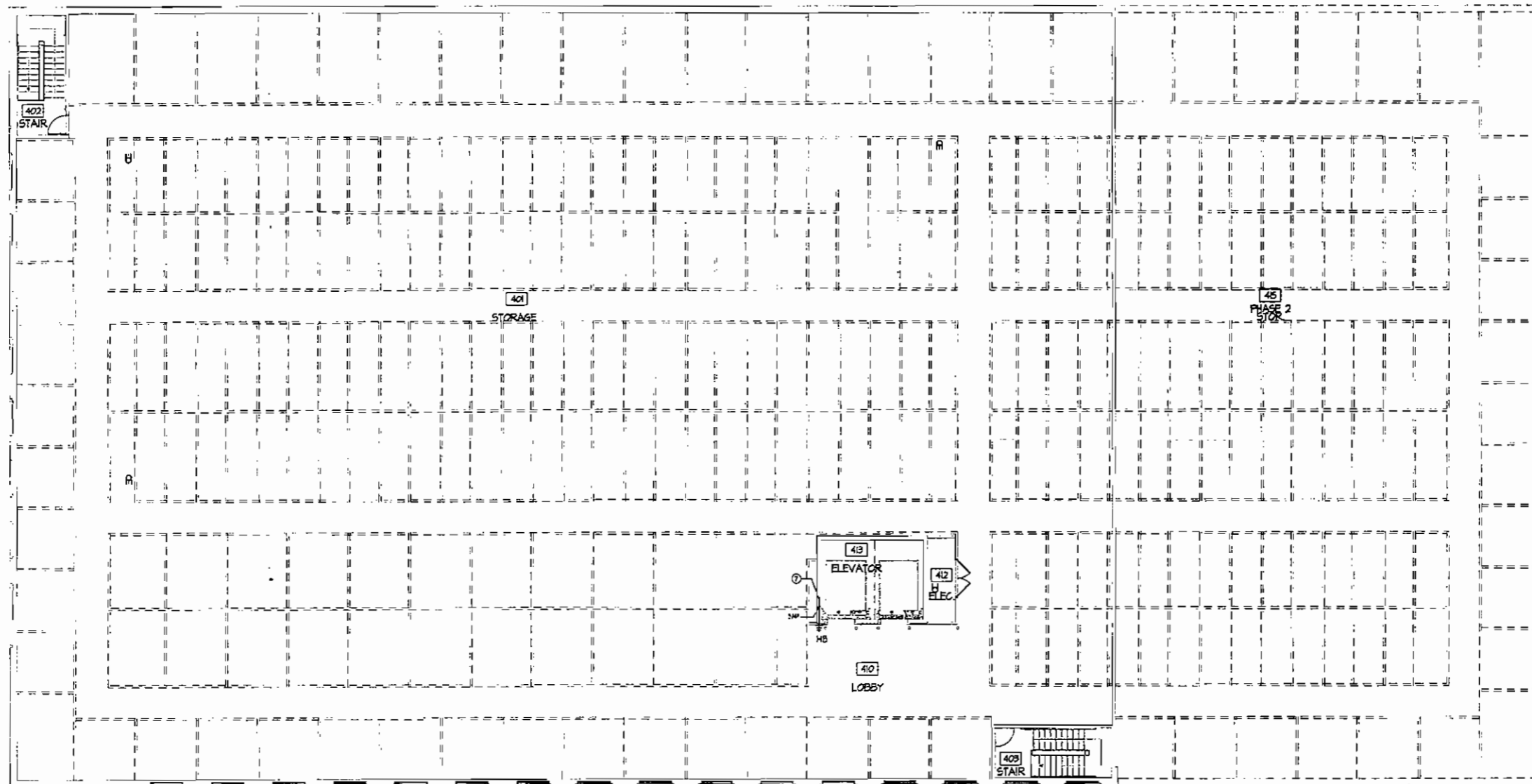
ADW Architects, p.a.
1401 West Morehead Street, Suite 100
Charlotte, NC 28208
704.378.1819 Fax 704.378.1820
www.adwarchitects.com

PLUMBING PLAN - 4TH FLOOR - 05/09/07

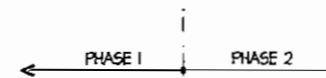
Ballantyne Commons
Storage Facility

dmi

CHARLOTTE, NC



1 FOURTH FLOOR BUILDING PLAN
74



- CONSTRUCTION NOTES
- ① 1/2" HW & CW DOWN TO P-2
 - ② 1/2" HW DOWN TO FIRST FLOOR
 - ③ 1/2" HW DOWN FROM THIRD FLOOR
 - ④ 1" CW UP TO SECOND FLOOR
 - ⑤ 1" CW UP FROM FIRST FLOOR
 - ⑥ 1" CW UP FROM SECOND FLOOR
 - ⑦ 3/4" CW UP FROM THIRD FLOOR
 - ⑧ TRAP PRIMER VALVE - LOCATE IN ACCESSIBLE WALL BOX



VNETOS PAPPAS
Consulting Engineers, PA
101 W. McDowell St.
Suite 120
Charlotte, NC 28204
704.372.7755
704.372.7799
www.vpc.com

FOURTH FLOOR
PLUMBING PLAN

DATE: 05/09/07 JOB NO: 07031

REVISIONS:

NO.	DATE	DESCRIPTION
05/09/07	05/09/07	FOR RECORD ONLY



SEAL NUMBER
P4
4 of 5 Total

PLUMBING GENERAL NOTES

- FURNISH ALL LABOR, MATERIAL, AND EQUIPMENT REQUIRED FOR THE COMPLETION AND OPERATION OF ALL SYSTEMS IN THIS SECTION OF WORK IN ACCORDANCE WITH ALL APPLICABLE CODES.
- FURNISH AND INSTALL COMPLETE SYSTEMS OF SOIL, WASTE, AND VENT PIPING FROM ALL PLUMBING FIXTURES, AND/OR OTHER EQUIPMENT.
- CLEANOUT PLUGS SHALL BE INSTALLED IN ACCORDANCE WITH PLUMBING CODE REQUIREMENTS AT EACH CHANGE OF DIRECTION. CLEANOUTS SHALL BE PLACED IN EASILY ACCESSIBLE LOCATIONS.
- ALL SOIL, WASTE AND VENT LINES SHALL BE CONCEALED IN THE BUILDING CONSTRUCTION.
- FURNISH AND INSTALL A COMPLETE SYSTEM OF HOT AND COLD WATER, AND WASTE PIPING FROM EXISTING SUPPLIES TO ALL FIXTURES AND/OR EQUIPMENT REQUIRING THIS SERVICE. VERIFY LOCATION OF EXISTING POINTS.
- COPPER PIPING SHALL BE PROTECTED AGAINST CONTACT WITH MASONRY OR DISSIMILAR METALS. ALL WELDING, APPROPTS, ANCHORS, AND CLIPS SHALL BE COPPER OR COPPER PLATED. WHERE COPPER PIPING IS CARRIED ON IRON TRAP-OUT HANGERS WITH OTHER PIPING, SATISFACTORY AND PERMANENT ELECTROLYTIC ISOLATION MATERIAL SHALL PROTECT THE COPPER AGAINST CONTACT WITH OTHER METALS.
- WHERE COPPER PIPING IS SLEEVED THROUGH MASONRY, SLEEVES SHALL BE COPPER OR RED BRASS. WHERE COPPER MUST BE CONCEALED IN A MASONRY PARTITION OR ASBESTOS MASONRY, CONTACT SHALL BE PREVENTED BY COATING THE COPPER HEAVILY WITH ASPHALTIC CHAMUL AND PROVIDING AN ASPHALT SATURATED FELT BETWEEN THE PIPE AND MASONRY.
- THE PLUMBING CONTRACTOR SHALL COORDINATE CLOSELY WITH THE MECHANICAL AND THE ELECTRICAL CONTRACTORS TO AVOID CONFLICT WITH OTHER TRADES.
- CEILING AREA HAS LIMITED SPACE. CONTRACTOR MUST COORDINATE WITH OTHER TRADES FOR ALL STRUCTURES, PIPING, CASSETT, DUCTWORK, LIGHTING, ETC. TO PROPERLY BE INSTALLED. PRIOR TO ANY WORK BEING INSTALLED, MECH. AND PLUMBING CONTRACTORS TO ADVISE THE OWNER'S REPRESENTATIVE IN WRITING, THAT THE GENERAL CONTRACTOR THAT ALL WORK HAS BEEN COORDINATED AND ANY CONFLICTS HAVE BEEN RESOLVED AT NO CHARGE TO THE OWNER.
- INSULATION IS REQUIRED ON ALL WATER SUPPLY PIPING ABOVE FINISHED FLOOR. PIPING PENETRATING WITH FITTING JOINTS AND PVC COVERS.
- COORDINATE DETAILING OF ALL PLUMBING LINES AT CIVIL WALLS SO THAT PLUMBING LINES ARE PLACED IN WALL DRIVEN CIVIL WALL. CONTRACTOR CUTTING AND PATCHING OF CIVIL WALLS IN PLACE WILL NOT BE PERMITTED.
- WASTE AND VENT PIPING SHALL BE AS FOLLOWS:
UNION BRASS SERVICE WEIGHT SOIL & SPOUT CAST IRON PIPE ABOVE GRADE. SERVICE WEIGHT IRON BRASS CAST IRON PIPE AT CONTRACTORS OFFICE WASTE AND VENT PIPING MAY BE SCHEDULE 40 PVC IN ACCORDANCE WITH ALL REQUIREMENTS OF LOCAL AUTHORITY HAVING JURISDICTION. NO PVC ALLOWED IN RETURN AIR PLUMBING.
- DOMESTIC WATER PIPING SHALL BE TYPE 1/2 COPPER OR CPVC.
- ALL COLD AND HOT WATER PIPING INDICATED TO BE RUN ABOVE FINISHED CEILING OR IN EXTERIOR WALL SHALL BE INSTALLED ON THE CONDITIONED SIDE OF THE BUILDING INSULATION.
- INVERT ELEVATIONS SHALL BE ESTABLISHED AND VERIFIED BEFORE WASTE PIPING IS INSTALLED IN ORDER THAT PROPER SLOPES WILL BE MAINTAINED.
- VERIFY BACKFLOW PREVENTION REQUIREMENTS OF LOCAL AUTHORITY AND PROVIDE BACKFLOW PREVENTION AS REQUIRED. COORDINATE LOCATION WITH OTHER TRADES.
- VERIFY DOMESTIC WATER METER REQUIREMENTS OF LOCAL AUTHORITY AND PROVIDE DOMESTIC WATER METER AS REQUIRED. COORDINATE LOCATION WITH OTHER TRADES.

FIRE PROTECTION

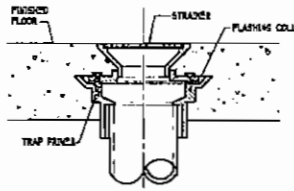
- THE SYSTEM SHALL BE IN ACCORDANCE WITH NFPA-101 REQUIREMENTS OF THE FIRE MARSHALL AND REQUIREMENTS OF THE OWNER'S INSURANCE COMPANY.
- SPRINKLER WORK SHALL CONSIST OF RELOCATING EXISTING AND/OR PROVIDING NEW SPRINKLER HEADS AS REQUIRED TO PROVIDE COMPLETE COVERAGE OF UPFIT AREA.
- THE SYSTEM SHALL BE DESIGNED FOR "ORDINARY HAZARD GROUP 1".
- ALL COMPONENTS USED IN THE SPRINKLER SYSTEM SHALL BE UL APPROVED FOR USE WITH SPRINKLERS.
- THE DESIGN HYDRAULIC CALCULATIONS, MATERIALS AND ACTUAL LAYOUT SHALL BE BY A SPECIALTY CONTRACTOR WHO IS A PROFESSIONAL ENGINEER LICENSED FOR FIRE PROTECTION DESIGN. THE DESIGN SHALL BE SIGNED AND SEALED BY THAT ENGINEER.
- PRIOR TO HYDRAULIC CALCULATIONS, OBTAIN APPROVED FIVE FLOW DATA RPM AND PRESSURES FROM THE NEAREST WATER SUPPLY, FROM THE FIRE MARSHALL.
- THE DESIGN SHALL INCLUDE AN OUTLINE OF ALL DUCTWORK, LIGHTS AND OTHER OBSTRUCTIONS DO NOT ROUTE PIPING THROUGH THE DUCTWORK TO AVOID PROPER DETAILING OF ALL APPLICABLE WORK. THE GENERAL CONTRACTOR SHALL COORDINATE CLEARANCES WITH THE SPRINKLER PIPING AND ALL TRADES AFFECTED SHALL SIGN OFF ON THE DESIGN PRIOR TO FABRICATION OR INSTALLATION.
- SPRINKLERS IN AREAS WITH CEILING SHALL BE CHROME PLATED WITH TWO PICES OF ENDOURONUM PLATES.
- PROVIDE ALL REQUIRED DEVICES AND COMPONENTS FOR INTER-LOCK WITH THE ALARM BELL OR CENTRAL STATION MONITORING, WHEN REQUIRED BY THE FIRE MARSHALL.
- THIS DESIGN SHALL BE SUBMITTED TO AND APPROVED BY THE FIRE MARSHALL PRIOR TO FABRICATION OR INSTALLATION.
- THE DESIGN SHALL BE SUBMITTED TO AND APPROVED BY THE OWNER'S INSURANCE COMPANY PRIOR TO FABRICATION OR INSTALLATION.
- USE LICENSED SPRINKLER CONTRACTOR FOR UPFIT.

PLUMBING FIXTURE SPECIFICATIONS AND CONNECTION SCHEDULE

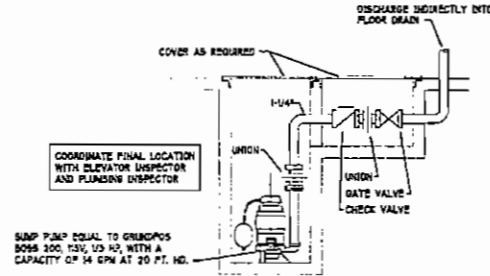
MARK	FIXTURE	TYPE	MANUFACTURER	MODEL NO.	MATERIAL	STYLE	FAUCET/VALVE				DRAIN		PIPE SIZES			REMARKS	
							MANUFACTURER MODEL NO.	SPOUT	HANDLE	CENTERS	TYPE	SIZE	WASTE	VENT	CW		HW
P-1	WATER CLOSET	FLOOR TANK	KOHLER	K-1427	VITREOUS CHINA	HANDCAP ELONGATED						1-1/2"	4"	2"	1/2"	FLOOR	PROVIDE K-1470-90 SEAT
P-2	LAVATORY	WALL MOUNT	KOHLER	K-1713	VITREOUS CHINA	HANDCAP SINK/BACK	DELTA 825 W/ 1/2"	STANDARD	SINGLE LEVER	1/2"	BRD	1-1/2"	1-1/2"	1-1/2"	1/2"	WALL MOUNT	
P-3	SINK	DOUBLE CRYPT	ELKAY	LK-1817	STAINLESS STEEL	7-1/2" DEEP 2-HOLE	DELTA 300	1/2" SWING	SINGLE LEVER	1/2"	CRMS CIP	1-1/2"	1-1/2"	1-1/2"	1/2"	COUNTER TOP	PROVIDE WITH ELKAY LK-16
PCO	FLOOR CLEAN-OUT	SQUARE TOP	JOBAN	56200	CAST IRON	BRONZE PLUG										FLOOR	
WCO	WALL CLEAN-OUT	ROUND TOP	JOBAN	56810	STAINLESS STEEL	BRONZE PLUG										WALL	
FPH3	WALL HYDRAUNT	FREEZE PROOF	WOODFORD	047	CAST BRASS	SOE FAUCET			LOCKE KEY						1/2"	WALL	
H3	HOSE BIBB	STANDARD	WOODFORD	076	POLISHED BRASS	SOE FAUCET			LOCKE KEY						1/2"	WALL	
PDA	FLOOR DRAIN	SQUARE TOP	JOBAN	30000-4	CAST IRON	NOZALTY TOP				CAST IRON	SEE PLAN					FLOOR	
WH1	WATER HEATER	ELECTRIC	STATE	PC2 80 120BA	GLASS LINED	CORNERICAL								1/2"	SEE PLAN	SEE DETAIL	30 GAL. STORAGE, 6 KW AT 240V, 30 GPM SUP. USE.

PLUMBING LEGEND

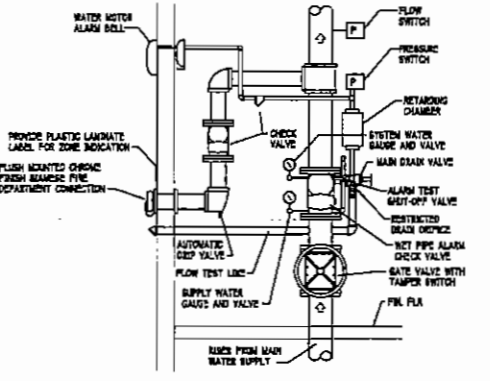
- DOMESTIC COLD WATER PIPING
- DOMESTIC HOT WATER PIPING
- - - VENT PIPING
- WASTE SANITARY GENERAL
- GATE VALVE
- BALANCING VALVE
- CHECK VALVE
- PIPE UP
- PIPE DOWN
- FIXTURE DESIGNATION
- A.P.F. ABOVE FINISHED FLOOR
- P.C. PLUMBING SUB-CONTRACTOR
- G.C. GENERAL CONTRACTOR
- M.C. MECHANICAL SUB-CONTRACTOR
- E.C. ELECTRICAL SUB-CONTRACTOR
- PCO FLOOR CLEAN OUT
- WCO WALL CLEAN OUT
- F.D. FLOOR DRAIN
- CW COLD WATER
- HW HOT WATER
- TIE-IN



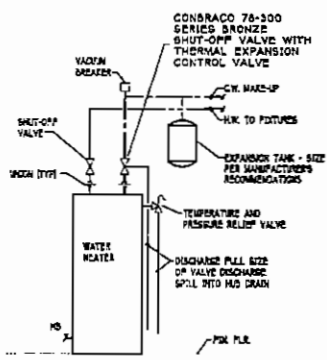
1 FLOOR DRAIN DETAIL
PS N.T.S.



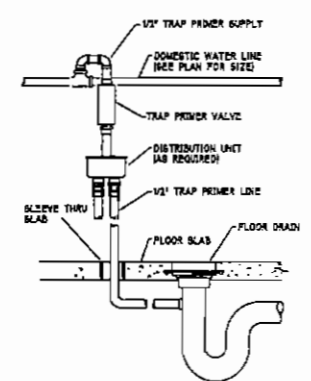
2 SUMP PUMP DETAIL
PS N.T.S.



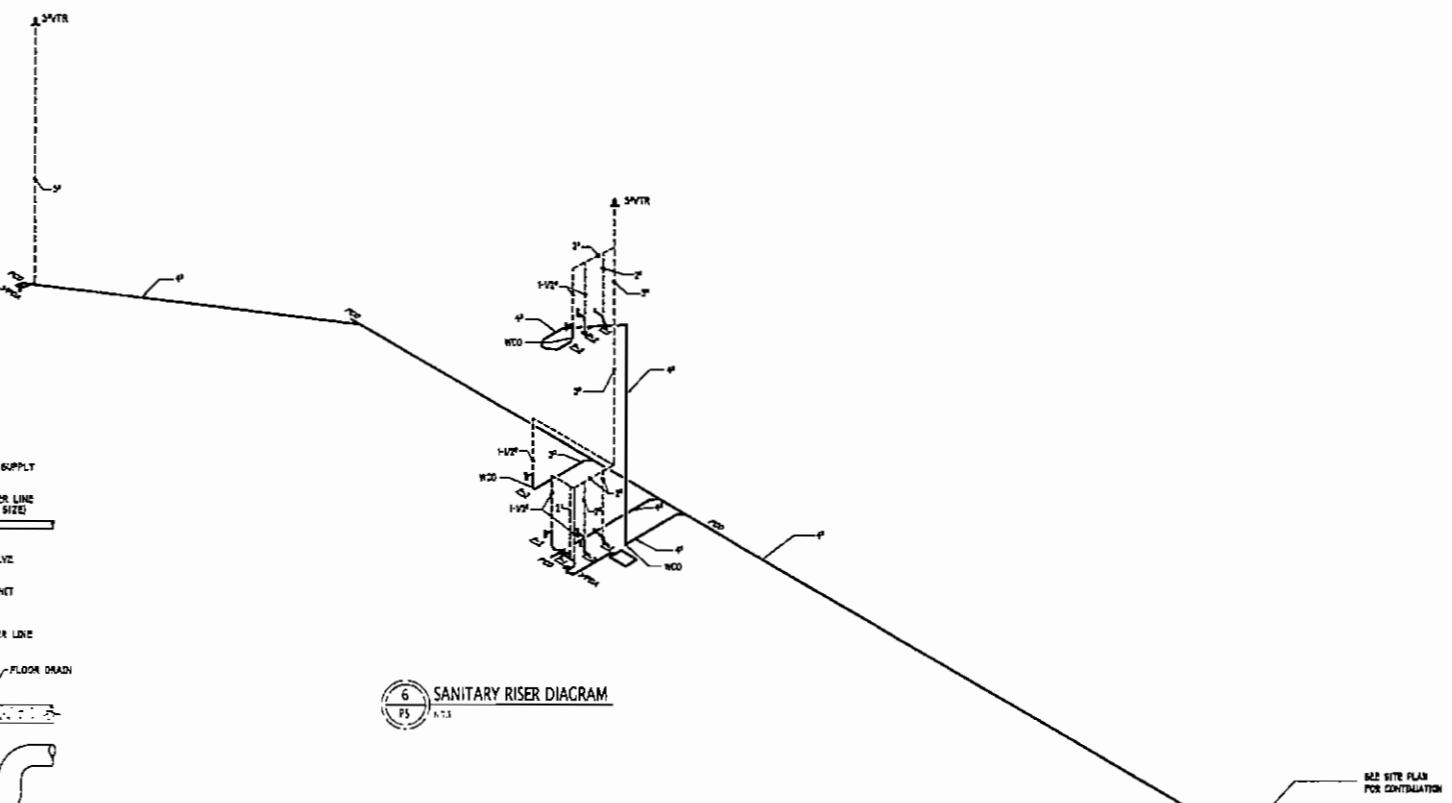
3 FIRE PROTECTION RISER DETAIL
PS N.T.S.



4 WATER HEATER DETAIL
PS N.T.S.



5 TRAP PRIMER DETAIL
PS N.T.S.



6 SANITARY RISER DIAGRAM
PS N.T.S.

ADW
Architects, p.a.
ADW Architects, p.a.
1401 West Morehead Street, Suite 100
Charlotte, NC 28208
704.378.1919 Fax 704.378.1920
www.adwarchitects.com

Ballantyne Commons Storage Facility
dmi
CHARLOTTE, NC

VP
VILETTOS PAPPAS
Consulting Engineers, PA
101 N. McDowell St
Suite 120
Charlotte, NC 28204
973.204.3723
973.204.3723
www.vpec.com

PLUMBING LEGEND, FIXTURE SCHEDULE, DETAILS, NOTES, AND RISER DIAGRAM

DATE: 05/09/07 JOB NO.: 07031

REV	DATE	DESCRIPTION
06/07		FOR PERICING ONLY

SEAL
DATE
5 of 5 Total