

SPLIT SYSTEM HEAT PUMP SCHEDULE																							
UNIT DESIG. ANUM	AREA SERVED	AIR HANDLING UNIT DATA					HEAT PUMP OUTDOOR UNIT			COOLING CAPACITY		HIGH HEATING CAPACITY (BTU/HOUR)	FILTER DATA	NOTES									
		MANUFACTURER & MODEL #	TOTAL CFM	NO. OF STAGES	SP. EFF.	FAN RPM	MANUFACTURER & MODEL #	VOLTS/PH	MCA	MAX FUSE	TOTAL MBH				SEER								
AS-1A	SEE PLANS	CARRIER 4640NFD0	2100	500	0.5	BY MFG	3/4	2075/3	8	2075/3	48.5	80	CARRIER 12H182500	2075/3	24.8	35	58.5	13.0	7.8	58.5	THROW AWAY	F	1-6
AS-1B	SEE PLANS	CARRIER 4640NFD0	2100	375	0.8	BY MFG	3/4	2075/3	8	2075/3	48.5	80	CARRIER 12H182500	2075/3	24.8	35	58.5	13.0	7.8	58.5	THROW AWAY	F	1-6
AS-1A-3A	SEE PLANS	CARRIER 4640NFD0	2100	375	0.5	BY MFG	3/4	2075/3	8	2075/3	48.5	80	CARRIER 12H182500	2075/3	24.8	35	58.5	13.0	7.8	58.5	THROW AWAY	F	1-6
AS-1A-3B	SEE PLANS	CARRIER 4640NFD0	2100	375	0.5	BY MFG	3/4	2075/3	8	2075/3	48.5	80	CARRIER 12H182500	2075/3	24.8	35	58.5	13.0	7.8	58.5	THROW AWAY	F	1-6
AS-1A-3C	SEE PLANS	CARRIER 4640NFD0	2100	375	0.8	BY MFG	3/4	2075/3	8	2075/3	48.5	80	CARRIER 12H182500	2075/3	24.8	35	58.5	13.0	7.8	58.5	THROW AWAY	F	1-6

NOTES:

- COOLING CAP. RATED BY ACCORDANCE WITH ARI STD. 250.280 AT 95% ASENTRY OUTDOOR AIR TEMP, 80% DBT DASH, 67% RH. SALS OVERSIZING AIR TEMPA NOM. AIR QTY LISTED.
- PROVIDE WITH TRACS AUTO CHANGE OVER PROGRAMMABLE THERMOSTAT.
- OUTDOOR UNITS SHALL HAVE A MINIMUM EFFICIENCY RATING OF 13.0 SEER, 10.0 EER.
- PROVIDE NEW THROW-AWAY FILTERS.
- BOTTOM RETURN AIR CONNECTION TO AIR HANDLER.
- REFRIGERANT PIPING TO BE SIZED PER TOTAL INSTALLED EQUIVALENT LENGTH. LONG-LINE APPARATUS TO BE PROVIDED WHEREVER MFG. RECOMMENDED LENGTHS ARE EXCEEDED, INCLUDING TIGHT LINE BENDED VALVES, ACCUMULATOR, ETC. MAX. TEL. IS 500'

FAN SCHEDULE												
UNIT DESIG.	SERVICE	AREA SERVED	MANUFACTURER & MODEL #	FAN TYPE & ARRANGEMENT	CFM	HP	RPM	MOTOR FLA	DRIVE TYPE	ELECTRICAL DATA	CONTROL SCHEME	ACCESSORIES
										HP/WATT	VOLTS/PH	NOTE
EX-1A	EXHAUST	SEE PLANS	GREENHECK 6P-272D	CEILING MOUNTED	300	0.250P	BY MFG	BY MFG	DIRECT	80 W	115/3	1-3
EX-2	EXHAUST	SEE PLANS	GREENHECK 6P-272D	CEILING MOUNTED	300	0.250P	BY MFG	BY MFG	DIRECT	80 W	115/3	1-3

NOTES:

- SOLENS
- BACKDRIFT DAMPER
- COLOR BY ARCHITECT
- INTERNAL DISCONNECT SWITCH
- TOOP CLBS
- IC

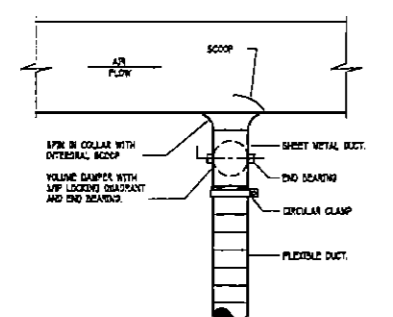
CONTROL:

- CONTROL WITH SEPARATE SWITCH BY E.C.
- CONTROL WITH THERMOSTAT

DIFFUSER SCHEDULE											
SYMBOL	CFM	NECK SIZE	MODEL #	FRAME TYPE	PATTERN	DAMPER	MATERIAL	SERVICE	FINISH	MANUFACTURER & MODEL #	NOTES
(A)	AS NOTED	AS NOTED	2424	LAY-FLY SURFACE	4-WAY	YES	STEEL	SUPPLY	NOTE 1	TITUS TDC	1-3
(B)	AS NOTED	AS NOTED	2424	LAY-FLY SURFACE	PERFORATED	NO	STEEL	RETURN	NOTE 2	TITUS PAR	1-3
(C)	AS NOTED	AS NOTED	AS NOTED	DUCTWORK	-	-	SHY MET.	SUPPLY	NOTE 3	HANMERLOCK COLLAR	1-3

NOTES:

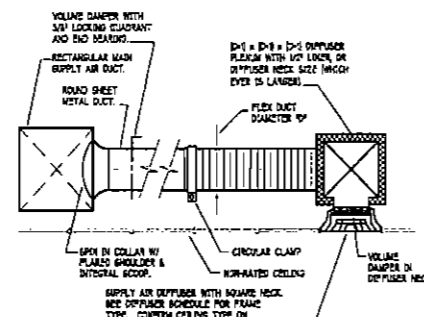
- DIFFUSER OBSERVATIONS ON PLANS AS FOLLOWS:
DIFFUSER OR NECK SIZE
AIR QTY
- FINISH TO MATCH/BE ABLE TO MATCH CEILING OR WALL OR COLOR OR CASSETT OR DUCT
- VERIFY CEILING COLOR, COORDINATE AND VERIFY COLOR WITH ARCHITECT.



NOTE:

- SEE FLOOR PLANS AND SPECIFICATIONS FOR DUCT INSULATION REQUIREMENTS.
- TAP OFF TOP/BOTTOM OF DUCT AS REQUIRED.

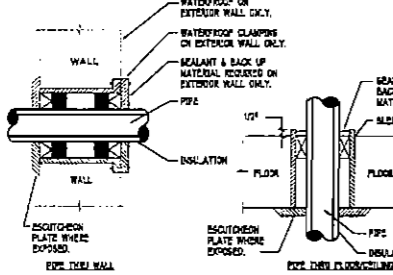
3 ROUND SUPPLY TAP TO SINGLE AIR OUTLET
1/4" = 1'-0"



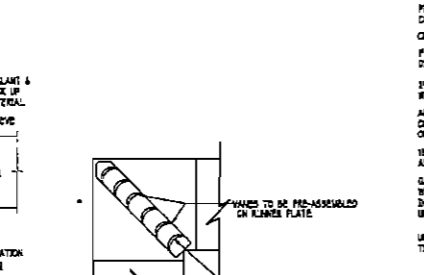
NOTE:

- SEE FLOOR PLANS AND SPECIFICATIONS FOR DUCT INSULATION REQUIREMENTS.
- MAXIMUM FLEXIBLE DUCT LENGTH SHALL BE 4'-0"

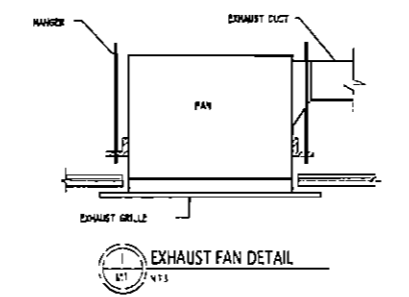
4 SUPPLY AIR DIFFUSER DETAIL
1/4" = 1'-0"



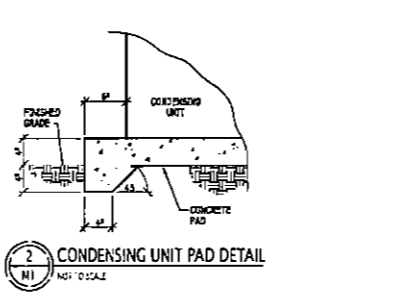
5 TYPICAL PIPE SLEEVE DETAILS
1/4" = 1'-0"



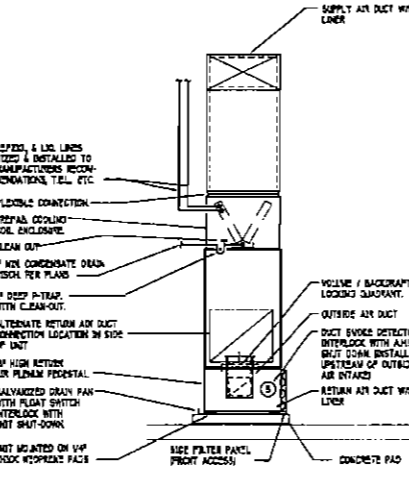
6 SQUARE ELBOW W/TURNING VANES
1/4" = 1'-0"



1 EXHAUST FAN DETAIL
1/4" = 1'-0"



2 CONDENSING UNIT PAD DETAIL
NOT TO SCALE



7 VERTICAL AIR HANDLING UNIT DETAIL
1/4" = 1'-0"

ENERGY REQUIREMENTS:

MECHANICAL SYSTEMS, SERVICE SYSTEMS AND EQUIPMENT METHOD OF COMPLIANCE:

PRESCRIPTIVE ENERGY CODE SUBJECT

THERMAL ZONE 1A

OUTDOOR DESIGN CONDITIONS
WINTER DRY BULB 18
WINTER WET BULB 15
OUTDOOR DESIGN CONDITIONS
WINTER DRY BULB 18
WINTER WET BULB 15
RELATIVE HUMIDITY 80
BULB TEMPERATURE 18
BULB COOLING LOAD 18

MECHANICAL SPACE CONDITIONING SYSTEM

DESCRIPTION OF UNIT: HEATING EFFICIENCY, COOLING EFFICIENCY, LEAKY DUCTS OF A/C, COOLING CAPACITY OF UNIT

SEE SCHEDULES

LIST EQUIPMENT EFFICIENCIES: SEE SCHEDULES

EXHAUST AIR QUANTITIES WITH MECHANICAL SYSTEMS: SEE SCHEDULES

MAJOR EQUIPMENT: SEE SCHEDULES

MOTOR TYPE: SEE SCHEDULES

NUMBER OF POLES: SEE SCHEDULES

UNIT HEATER SCHEDULE									
TAB	LOCATION	# OF HEATERS	CAPACITY BTU/H	ELECTRICAL DATA	MANUFACTURER & MODEL #	NOTES			
				W V PH HZ					
U-1	SEE PLANS	1	1/20	1800 120 1 60	MAZEX MODEL E331270-EP	1-6			
U-2	SEE PLANS	2	1/20	1800 120 1 60	MAZEX MODEL E331270-EP	1-3			

NOTES:

- INTERNAL THERMOSTAT
- RECESSED MOUNT
- MOUNT HEATER 6" UP A.F.F.
- COORDINATE LOCATION TO BE NEAR FIRE ALARM LOCATION

HVAC GENERAL NOTES

- FURNISH ALL LABOR, MATERIAL AND EQUIPMENT NECESSARY FOR THE COMPLETE INSTALLATION AND OPERATION OF ALL SYSTEMS IN THIS SECTION OF WORK IN ACCORDANCE WITH RECOMMENDED PRACTICE AND ALL APPLICABLE CODES.
- DO NOT SCALE DRAWINGS. SEE ARCHITECTURAL DRAWINGS & REFLECTED CEILING PLANS FOR EXACT LOCATION OF DOORS, WINDOWS, CEILING DIFFUSERS, ETC.
- ALL MECHANICAL PERMITS AND INSPECTION FEES SHALL BE OBTAINED AND PAID FOR BY THE MECHANICAL CONTRACTOR.
- MECHANICAL CONTRACTOR SHALL GUARANTEE ALL WORK AND MATERIALS FOR ONE YEAR, EFFECTIVE THE DAY THE PROJECT IS ACCEPTED BY THE OWNER. REFRIGERANT COMPRESSORS SHALL BE GUARANTEED FOR FIVE YEARS.
- DRAWINGS ARE DIMENSIONAL AND MAY NOT SHOW ALL REQUIRED FITTINGS. CONTRACTOR IS RESPONSIBLE FOR COORDINATING THE TYPE, SIZE AND LOCATION OF ALL AIR DEVICES, DUCTWORK, PIPING AND EQUIPMENT WITH THE CEILING PLAN, LIGHTS, STRUCTURAL ELEMENTS AND OTHER TRADES. CONTRACTOR TO FURNISH AND INSTALL ALL DUCTS, OFFSETS, ELBOWS, ETC. AS REQUIRED. VERIFY ALL CLEARANCES PRIOR TO FABRICATING DUCTWORK OR ORDERING EQUIPMENT.
- CONTRACTOR IS RESPONSIBLE FOR PROVIDING MATERIALS AND INSTALLING THE WORK IN ACCORDANCE WITH ALL APPLICABLE LOCAL, STATE AND NATIONAL CODES.
- DUCTWORK:
 - ALL DUCTWORK SHALL BE GALVANIZED SHEET METAL CONSTRUCTED IN ACCORDANCE WITH SMANNA STANDARD WITH A MINIMUM PRESSURE CLASSIFICATION OF 2" GAL. CLASS 6, WITH A MAXIMUM LEAKAGE RATE OF 1%.
 - ALL SQUARE ELBOWS SHALL HAVE TURNING VANES.
 - ALL DUCT DIMENSIONS SHOWN ARE INTERIOR CLEAR DIMENSIONS.
 - PROVIDE A MANUAL BALANCE DAMPER AT ALL SUPPLY AND RETURN BRANCH TAKEOFFS.
 - FLEXIBLE DUCT, IF SHOWN ON DRAWINGS, SHALL BE INSULATED ROUND DUCT WITH AN OUTER GLASS REINFORCED SILVER NYLON JACKET ENCLASING 1/2" THICK GLASS FIBER INSULATION AROUND A CONTIGUOUS TIGHT LINE, AND SHALL CONFORM TO THE REQUIREMENTS OF ALL 18" FOR CLASS 1 FLEXIBLE AIR DUCTS. MAXIMUM LENGTH OF FLEXIBLE DUCT SHALL BE 6 FEET. "R" VALUE TO MEET/EXCEED ENERGY CODE. P-46.
 - ALL SHEET METAL DUCTWORK WITHIN 10' OF THE AIR HANDLING UNIT SHALL BE LINED WITH DUCT LINER. ALL EXHAUST SUPPLY, OUTSIDE AIR AND EXTERIOR DUCTS SHALL BE OFFICE INTERNALLY LINED OR EXTERNALLY INSULATED WITH DUCT LINER. PROVIDE AN ADDITIONAL 1/2" OF DUCT WRAP AND AN ALUMINUM JACKET FOR ALL EXTERIOR DUCT.
 - ALL DUCT INSULATION SHALL BE R-4 CONTINUOUSLY THROUGH FLOORS AND PARTITIONS.
- PIPING:
 - CONDENSATE DRAINAGE SHALL BE SCHEDULE 40 PVC OR TYPE L COPPER WITH GALVANIZED JOINTS.
 - REFRIGERANT PIPING SHALL BE TYPE A/C WEIGHT COPPER WITH WROUGHT COPPER FITTINGS AND BRAZED JOINTS.
- INSULATION:
 - DUCT LINER - FIBERGLASS DUCT LINER, MINIMUM 1/2" THICK WITH RAYONEX TO MEET LOCAL ENERGY CODES, WITH COATED SURFACE EXPOSED TO AIR STREAM. APPLY WITH MECHANICAL PARTIES AND 20% OVERLAP OF JOINTS.
 - DUCT WRAP - MINERAL FIBER BLANKET, MINIMUM 1/2" THICK WITH RAYONEX TO MEET LOCAL ENERGY CODES, WITH REINFORCED FIBER AND FIBER WARP RETARDANT JACKET. APPLY WITH MECHANICAL PARTIES AND ADHESIVE.
 - INTERIOR CONDENSATE DRAINS - INSULATE WITH 1/2" THICK FLEXIBLE ELASTOMERIC PIPE INSULATION.
 - REFRIGERANT SUCTION LINES - INSULATE WITH 1/2" THICK FLEXIBLE ELASTOMERIC PIPE INSULATION. PROVIDE ALUMINUM JACKET FOR EXTERIOR INSULATION.
 - AIR DISTRIBUTION - INSULATE TOP-SIDE AS REQUIRED PER CODE.
- ALL PIPING, DUCTS, VENTS, ETC., EXTENDING THROUGH WALLS & ROOF SHALL BE FLASHED & COUNTER-FLASHED IN A WATERPROOF MANNER.
- EXTEND ALL CONDENSATE DRAINS TO JANITORS RISE, FLOOR DRAIN, SPLASH BLOCK OR AS REQUIRED PER CODE. DRAINS FROM AHUs SHALL BE TRAPPED. SLOPE 1/4" PER FOOT.
- LOCATE ALL THERMOSTATS AND SWITCHES 4'-0" ABOVE FINISHED FLOOR. FURNISH A THERMOSTAT FOR EVERY DEVICE REQUIRING GAS WHETHER SHOWN OR NOT.
- ALL EQUIPMENT SHALL BE INSTALLED PER CODE & MANUFACTURER'S REQUIREMENTS FOR SERVICE AND ACCESS CLEARANCES.
- ALL EQUIPMENT SHALL BE UL LISTED.
- MECHANICAL CONTRACTOR SHALL BALANCE SYSTEM TO AIR QUANTITIES INDICATED ON PLANS AND PROVIDE A COMPLETE BALANCE REPORT IN ACCORDANCE WITH HERS OR ASAC STANDARDS.
- ALL CONTROL WIRING SHALL BE BY MECHANICAL CONTRACTOR.
- DUCT SMOKE DETECTORS SHALL BE INSTALLED IN THE RETURN AIR DUCT OR PLenum UPSTREAM OF ANY FILTERS OR DECONTAMINATION EQUIPMENT UPON ACTIVATION THE SMOKE DETECTOR SHALL SHUT DOWN THE AIR HANDLING UNIT.
 - IF THERE IS A FIRE ALARM SYSTEM DETECTORS SHALL BE PROVIDED AND WIRING BY THE ELECTRICAL CONTRACTOR, DETAILLED BY THE MECHANICAL CONTRACTOR. ACTIVATION OF A DUCT SMOKE DETECTOR SHALL INITIATE A VISIBLE AND AUDIBLE SUPERVISORY SIGNAL AT A CONSTANTLY ATTENDED LOCATION.
 - IF THERE IS NOT A FIRE ALARM SYSTEM DETECTORS SHALL BE PROVIDED AND WIRING BY THE MECHANICAL CONTRACTOR. ACTIVATION OF A DUCT SMOKE DETECTOR SHALL INITIATE A VISIBLE AND AUDIBLE SUPERVISORY SIGNAL AT A CONSTANTLY ATTENDED LOCATION.
- PROVIDE A CLEAN SET OF FILTERS FOR ALL AIR HANDLING EQUIPMENT AT SUBSTANTIAL COMPLETION.
- MAINTAIN A MINIMUM 2'-0" BETWEEN OUTDOOR AIR INTAKES AND EXHAUST FAN DISCHARGE AND PLUMBING VENTS, ETC. FIELD COORDINATE.
- ROOF CURBS SHALL HAVE A BASE THAT FITS SLOPE OF ROOF AS REQUIRED. TOP OF CURB SHALL BE LEVEL. SEE STRUCTURAL PLANS FOR SLOPE INFORMATION.
- MOUNT OUTDOOR HEAT PUMP ON GROUND PER DETAILS ON SHEET 15.
- RAIN DUCT IF WITHIN STRUCTURE OR THROUGH JOIST NEED WHERE POSSIBLE & WHERE REQUIRED TO MAINTAIN CEILING HEIGHTS. PROVIDE OFFSETS IN DUCT WHERE NECESSARY WITH MAX. 45 DEGREE MAKE BRANCH TAPS 1/4" UP, SIDES OR BOTTOM AS REQUIRED. NO BACK TO BACK OR ELBOWS ALLOWED.
- REFRIGERANT PIPING SHALL BE SIZED & INSTALLED IN ACCORDANCE WITH THE MANUFACTURER'S RECOMMENDATIONS AND INSTALLATION INSTRUCTIONS.
- ALL EQUIPMENT SHALL BE LABELED ACCORDING TO MARKING / IDENTIFICATION SYSTEM PER PLANS.

MECHANICAL LEGEND

- CEILING DIFFUSER
- CEILING EXHAUST FAN
- THERMOSTAT / UNIT CONTROL
- SQUARE DUCT
- ROUND METAL DUCT
- ROUND FLEX DUCT
- DUCT ELBOW WITH TURNING VANES
- VOLUME DAMPER
- TURNING VANES
- ROOF TOP UNIT
- CFM
- STATIC PRESSURE
- DOOR UNDER CUT W/P
- BACK DRAFT DAMPER
- DUCT SMOKE DETECTOR

MECHANICAL DRAWING INDEX

- MECHANICAL NOTES, SCHEDULES AND DETAILS
- FIRST FLOOR MECHANICAL PLAN
- SECOND FLOOR MECHANICAL PLAN
- THIRD FLOOR MECHANICAL PLAN
- FOURTH FLOOR MECHANICAL PLAN

ADW

Architects, p.a.

ADW Architects, p.a.
1401 West Morehead Street, Suite 100
Charlotte, NC 28208
704.379.1919 Fax 704.379.1920
www.adwarchitects.com

Ballantyne Commons Storage Facility

dmi

CHARLOTTE, NC

VP

VICTOR PAPPAS
Consulting Engineers, PA
101 N. McDowell St.
Suite 110
Charlotte, NC 28204
(704) 372-7755
(704) 372-7759
www.vpce.com

MECHANICAL NOTES, SCHEDULES AND DETAILS

DATE: 05/09/07 JOB NO.: 07031

REVISIONS:

NO.	DATE	DESCRIPTION
06/05/07		FOR PENDING ONLY

SECRET NUMBER

M1

1 of 5 Total



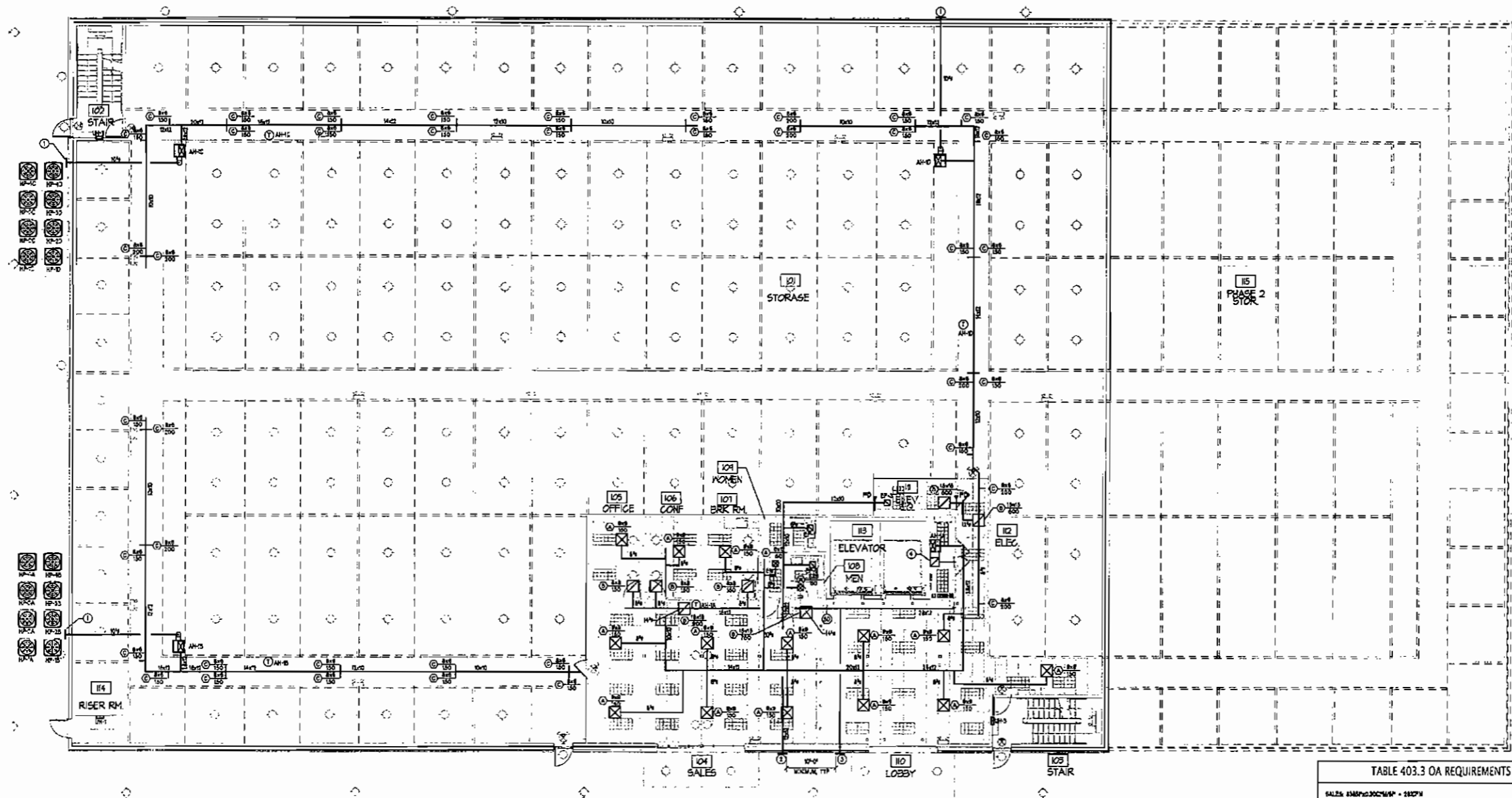
Architects, p.a.

ADW Architects, p.a.
 1401 West Morehead Street, Suite 100
 Charlotte, NC 28208
 704.378.1919 Fax 704.378.1920
 www.adwarchitects.com

Ballantyne Commons Storage Facility

dmi

CHARLOTTE, NC



1 FIRST FLOOR MECHANICAL PLAN



TABLE 403.3 OA REQUIREMENTS

SALES: 84800 SQ FT	1.00 CFM
OFFICE: 27000 SQ FT	1.50 CFM
CONFERENCE: 24000 SQ FT	1.50 CFM
BAR/RESTAURANT: 14400 SQ FT	1.00 CFM
TOTAL OUTSIDE AIR REQUIRED: 1014 CFM	
TOTAL OUTSIDE AIR PROVIDED: 1014 CFM	

- KEYED NOTES**
1. 1/2" DRAINABLE OUTSIDE AIR LOWER, RIGID WOOD, SUPPLY OR APPROVED EQUAL FINISH AS SELECTED BY ARCHITECT, COORDINATE EXACT LOCATION WITH OWNER PRIOR TO INSTALLATION.
 2. 1/4" DRAINABLE EXHAUST AIR LOWER, RIGID WOOD, SUPPLY OR APPROVED EQUAL FINISH AS SELECTED BY ARCHITECT, COORDINATE EXACT LOCATION WITH OWNER PRIOR TO INSTALLATION.
 3. 1/2" DRAINABLE OUTSIDE AIR LOWER, RIGID WOOD, SUPPLY OR APPROVED EQUAL FINISH AS SELECTED BY ARCHITECT, COORDINATE EXACT LOCATION WITH OWNER PRIOR TO INSTALLATION.
 4. 1/2" DR. DOWN TO AHU, TRANSITION TO 1/2" IN CEILING SPACE.
 5. ROUTE F CONDENSATE FROM AIR UNIT FIRST FLOOR UNIT AND ABOVE TO FLOOR DRAIN AT MECHANICAL CLOSET AT FIRST FLOOR.
 6. ALL REFRIGERANT LINES OVER STORAGE/CONDOR AREAS SHALL BE ENCASED IN PROTECTIVE PIPING AS APPROVED BY THE OWNER, VERIFY WITH OWNER FOR PROTECTIVE PROVISIONS FOR ELECTRICAL OVER STORAGE/CONDOR AREAS PRIOR TO PIPING AND INSTALLATION, TYPICAL FOR ALL PLACES.

VP

VRETTOS PAPPAS
 Consulting Engineers, PA
 101 N. McDowell St.
 Suite 120
 Charlotte, NC 28204
 (704) 372-7755
 (704) 372-7799
 www.vpe.com

FIRST FLOOR MECHANICAL PLAN

DATE: 05/09/07 JOB NO.: 07031

REVISIONS:

NO.	DATE	DESCRIPTION
01	05/09/07	FOR RECORD ONLY

SEAL 027800

SECRET NUMBER

M2

2 of 5 Total



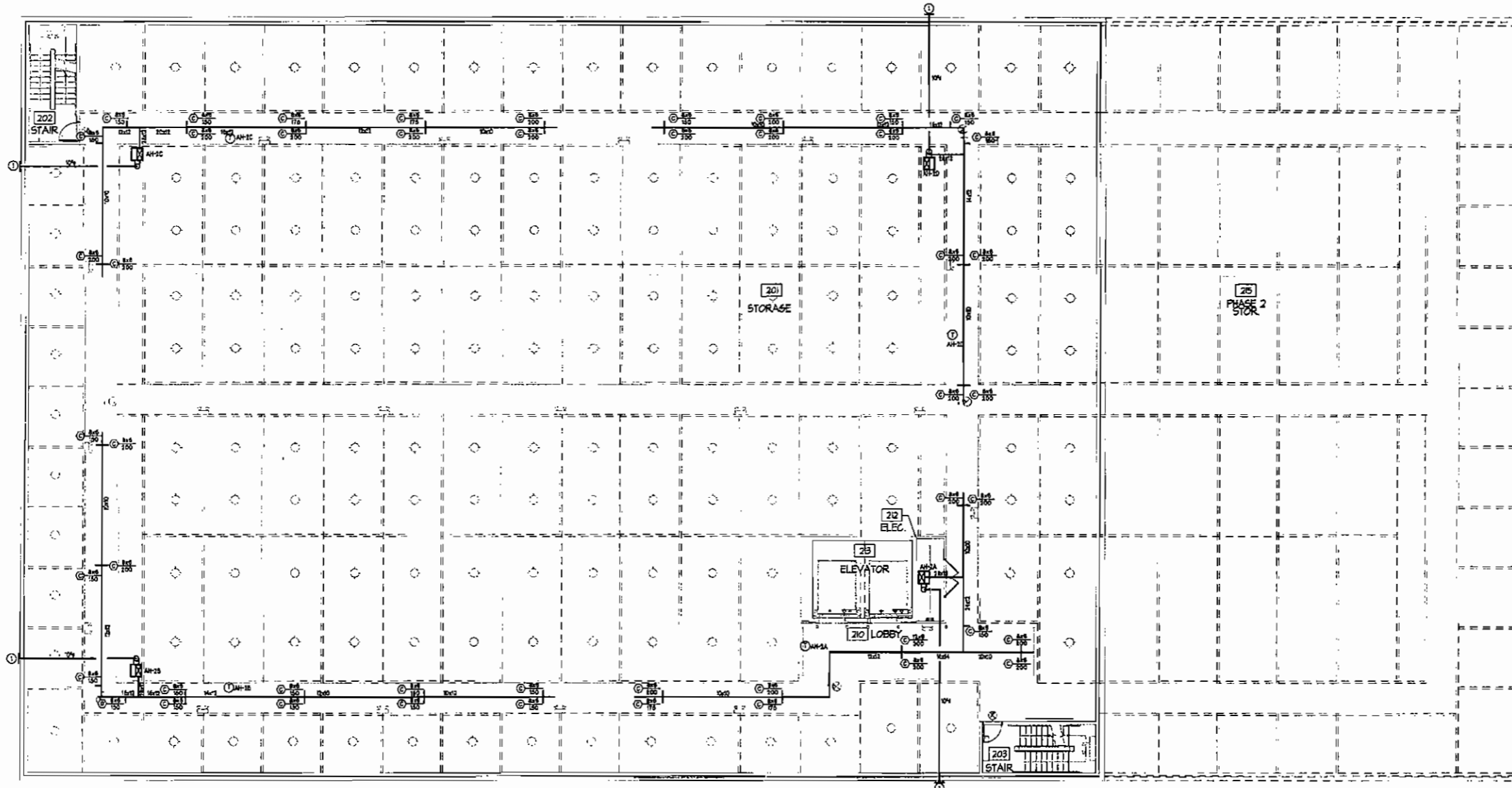
Architects, p.a.

ADW Architects, p.a.
1401 West Morehead Street, Suite 100
Charlotte, NC 28208
704.378.1919 Fax 704.378.1920
www.adwarchitects.com

Ballantyne Commons
Storage Facility

dmi

CHARLOTTE, NC

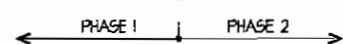


SECOND FLOOR MECHANICAL PLAN
114-112

TABLE 403.3 OA REQUIREMENTS
CONVAIL/WAREHOUSE TYPE/SPACE/USE/1000CFM
TOTAL OUTSIDE AIR REQUIRED = 100 CFM
TOTAL OUTSIDE AIR PROVIDED = 100 CFM

KEYED NOTES

1. 100% DRAINABLE OUTSIDE AIR LOUVER, BLIND MODE, ELEVATED OR APPROVED EQUAL. FINISH AS SELECTED BY ARCHITECT. COORDINATE EXACT LOCATION WITH OWNER PRIOR TO INSTALLATION.



SECOND FLOOR MECHANICAL PLAN

DATE: 05/09/07 JOB NO: 07031

REVISIONS:

NO. DATE REVISIONS
05/09/07 FOR PHASING ONLY

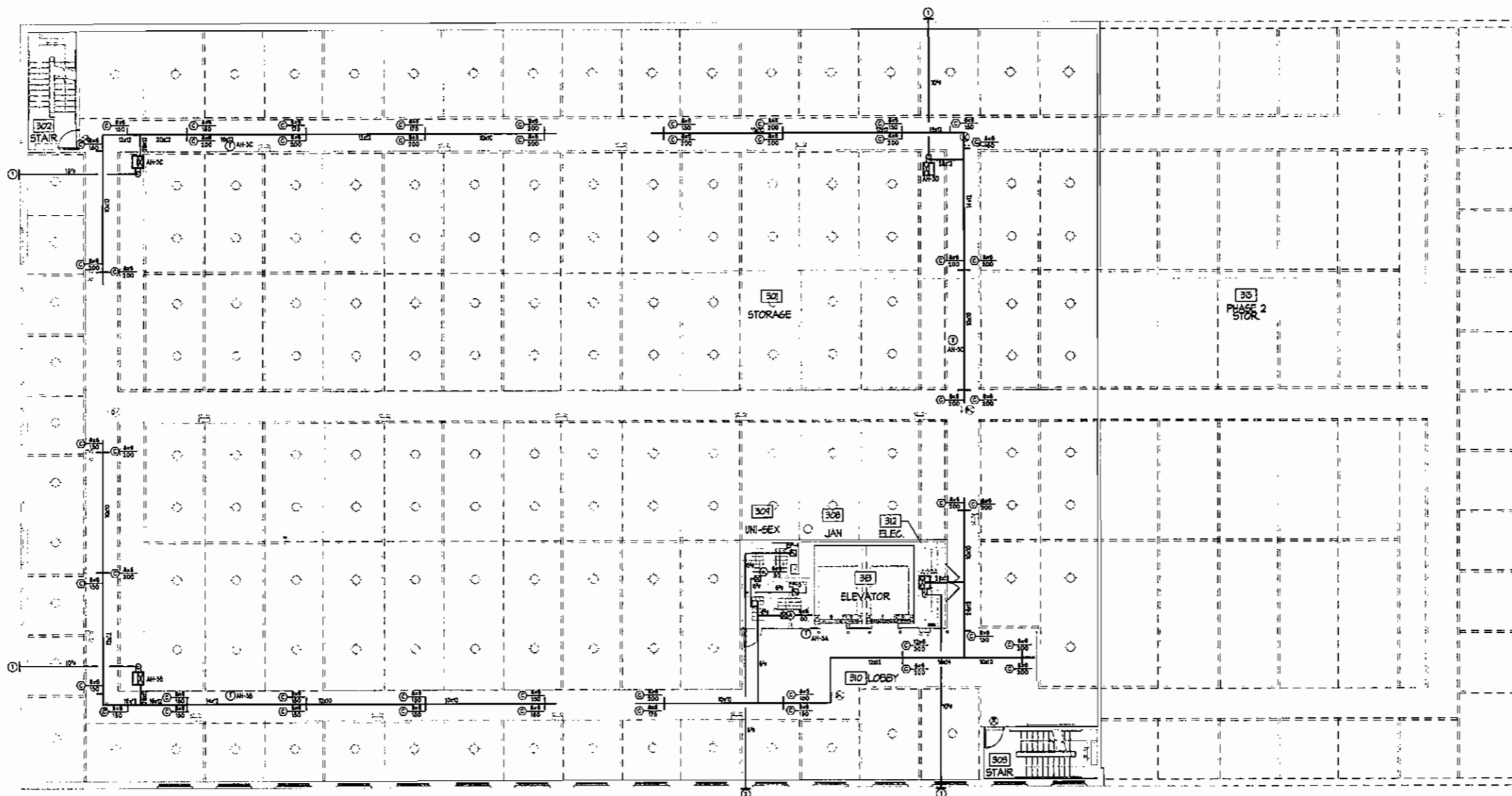
PROFESSIONAL SEAL
VICTOR PAPPAS
REGISTERED MECHANICAL ENGINEER
STATE OF NORTH CAROLINA
NO. 10000

SHEET NUMBER
M3
3 of 5 Total



Architects, p.a.

ADW Architects, p.a.
 1401 West Morehead Street, Suite 100
 Charlotte, NC 28208
 704.379.1819 Fax 704.378.1920
 www.adwarchitects.com



1 THIRD FLOOR MECHANICAL PLAN
 10/11/07

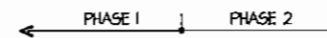


TABLE 403.3 OA REQUIREMENTS

CORRIANT/HAZARDOUS EMERGENCY RESPONSE - 100 CFM
 TOTAL OUTSIDE AIR REQUIRED = 100 CFM
 TOTAL OUTSIDE AIR PROVIDED = 100 CFM

KEYED NOTES

- ① 24H DRINKABLE OUTSIDE AIR LOUVER, BLENDED MODE, EUP7300 OR APPROVED EQUAL. FRESH AIR SELECTED PER ARCHITECT. COORDINATE EXACT LOCATION WITH OWNER PRIOR TO INSTALLATION.
- ② 24H DRINKABLE COMBUSTIBLE AIR LOUVER, BLENDED MODE, EUP7310 OR APPROVED EQUAL. FRESH AIR SELECTED PER ARCHITECT. COORDINATE EXACT LOCATION WITH OWNER PRIOR TO INSTALLATION.

Ballantyne Commons
 Storage Facility

dmi

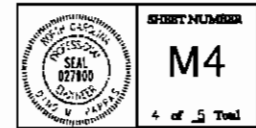
CHARLOTTE, NC



THIRD FLOOR
 MECHANICAL
 PLAN

DATE: 05/09/07 JOB NO: 07031

REVISIONS:
 NO. DATE DESCRIPTION
 05/09/07 FOR PRICING ONLY



SHEET NUMBER
M4
 4 of 5 Total

