

LIGHTING FIXTURE SCHEDULE						
SYMBOL OR TAG LETTER	MANUF.	CATALOG NUMBER	NO.	LAMP DATA TYPE	WATTS	NOTES
A	HALOPOINT	071201LAMBALUM/004412-CASR	1	120V MH	100	POLE MOUNTED DOUBLE BAY "LIGHT" MOUNTED "T" TYPE PROVIDE A POLE CALCULATED FOR THE WIND BATHING OF CHARLOTTE, NC AND FOR THE WEIGHT OF ALL FIXTURES INSTALLED ON THIS POLE
B	QUALITY LIGHTING	SL-2715-4M-100-FL-BC-108-5A/5050-10-10-7	1	400W MH	440	FIXED FLOOR MOUNTED LIGHT MOUNTED "T" TYPE PROVIDE A POLE CALCULATED FOR THE WIND BATHING OF CHARLOTTE, NC AND FOR THE WEIGHT OF ALL FIXTURES INSTALLED ON THIS POLE
B3	LIN MOUNT	KIPER-3227P-44021	3	730-T8-35C	86	RECESSED
C	SYSTEM LIGHTING	SPC109-21121000000000-1W-10	1	40W CF	84	SURFACE
D	LIN GREENLEE	SL2715-4M-100-FL-BC-108-5A/5050-10-10-7	1	730-T8 MH	100	GROUND
F	ANY		1	730 DC	75	SURFACE
G	LIN MOUNT	63M-86051 WD-140	7	730-T8-35C	82	SURFACE WALL
L	LINAK	WPS114-207W	2	730-T8-35C	82	SURFACE WALL
M1	LIN OUTDOOR	CHW57-0730M-F-3-5LE	1	65W MH	164	SURFACE WALL
M2	LINAK	WPS4-PL131810	2	100W PL	03	SURFACE WALL
S	LIN MOUNT	8212-540	3	730-T8-35C	82	SURFACE
T	SEE BY OTHER PROVIDED BY EC				100W MAX	
V	CRESCENT STROBE	VOL 1 0C (CEILING MOUNTED) VITE 1 0C (WALL MOUNTED)	1	100W A-19	00	RECESSED
W	CHALICE	53L-H2-P-W	3	LED	1	UNIVERSAL
X	CHALICE	53L-H2-W-AD	1	1W HALOGEN	23	WALL
Y	CHALICE	53L-1	1	LED	1	UNIVERSAL

FIXTURE SCHEDULE NOTES:

L1) LIGHTING FIXTURE CATALOG NUMBERS ARE INDICATIVE OF THE STYLE OF FIXTURE REQUIRED. CONTRACTOR SHALL COORDINATE WITH FIELD CONDITIONS & ARCHITECT'S POWER SCHEDULE TO PROVIDE FIXTURES WITH THE PROPER TYP, VOLTAGE AND OPTIONS NECESSARY FOR A COMPLETE INSTALLATION.

L2) DOUBLE-FACED EXIT FIXTURES SHALL BE OF THE SAME MANUFACTURE AND SERIES AS THE CORRESPONDING SINGLE-FACED FIXTURES SCHEDULED.

L3) FLUORESCENT BATTERY PACKS SHALL BE CAPABLE OF PROVIDING AT LEAST TWO LAMP OUTPUT FROM ONE LAMP FOR A DURATION OF 15 HOURS. SCHEDULES OF CATALOG NUMBER INDICATED IN SCHEDULE, PROVIDE BATTERY PACKS FOR ALL FIXTURES INDICATED ON THE DRAWINGS TO BE EMERGENCY TYPE. BOTH LAMPS OF A DOUBLE-FACED FIXTURE SHALL BE SERVED BY THE EMERGENCY BALLAST. ALL BATTERY PACKS SHALL BE FACTORY INSTALLED. FIXTURES SHALL BE SERVED BY THE EMERGENCY BALLAST.

L4) ALL FLUORESCENT FOUR FOOT LIGHT FIXTURES SHALL BE EQUIPPED WITH INSTANT START ELECTRONIC BALLASTS AND 3000K INSTANT-START T-8 LAMPS.

L5) ALL CONTACT FLUORESCENT LIGHT FIXTURES SHALL BE EQUIPPED WITH ELECTRONIC BALLASTS AND 3000K T-8 LAMPS.

L6) SUBSTITUTES FOR ORIGINAL MANUFACTURERS WILL BE CONSIDERED. PROVIDE SUBMITTAL DATA TO INCLUDE COMPLETE PHOTOGRAPHIC DATA AS WELL AS DATA ON MATERIAL, FINISHES, SUPPORTS, REFLECTORS, LENSES, ETC.

L7) PROVIDE BALLASTS AS REQUIRED FOR PROGRAMMABLE/SMART BALLASTS WHERE INDICATED ON PLANS. IN ADDITION, ALL FIXTURES REQUIRING OUTDOOR BALLASTS SHALL BE TAKEN INTO ACCOUNT.

L8) FIXTURES SHALL BE ADEQUATELY SUPPORTED DIRECTLY FROM THE STRUCTURE WITH CODE GRADE WIRE AT A MINIMUM OF TWO OPPOSITE CORNERS.

L9) ALL RECESSED FIXTURES INSTALLED IN CEILING, INDICATED BY ARCHITECT AS HAVING INSULATION INSTALLED OVER CEILING AND FIXTURES, SHALL BE UL LISTED FOR DIRECT CONTACT WITH INSULATION, VENT WITH ARCHITECTURAL PLANS.

L10) ALL RECESSED FIXTURES RECESSED IN PLY WOOD CEILING, SHALL BE INSTALLED WITH AN APPROVED TRIM ENCLOSURE BY UL OR AS UL LISTED FOR USE IN PLY WOOD CEILING. VERIFY WITH ARCHITECTURAL PLANS.

L11) VERIFY ALL FIXTURE VOLTAGES PRIOR TO ORDERING.

L12) REGARDLESS OF MODEL NUMBER, THE ELECTRICAL CONTRACTOR SHALL PROVIDE CORRECT BALLASTS FOR ALL FLUORESCENT LIGHT FIXTURES CONTROLLED WITH DIMMER SWITCHES.

GENERAL LIGHTING NOTES:

L1) SEE ARCHITECTURAL REFLECTED CEILING PLAN FOR THE EXACT LOCATION OF ALL CEILING MOUNTED LIGHTING FIXTURES.

L2) LIGHTING DESIGN FOR THIS PROJECT ASSUMES NO REFLECTANCE ON THE CEILING, NOR REFLECTANCE ON THE WALLS AND FLOOR REFLECTANCE ON THE FLOORS.

L3) EXIT LIGHTS SHALL NOT BE SWITCHED.

L4) EXIT, EMERGENCY AND NIGHT LIGHTS SHALL BE CONNECTED TO AN UNSWITCHED LEG OF THE LOCAL LIGHTING BRANCH CIRCUIT. ASSOCIATED BOXES & CIRCUIT BREAKER FIVE FEET MINIMUM SHALL BE PAINTED RED.

L5) EXACT LOCATION OF LIGHTING FIXTURES IN MECHANICAL SPACES SHALL BE DETERMINED IN THE FIELD. FIXTURES SHALL NOT BE SUPPORTED FROM DUCT OR PIPE. PROVIDE CHAIN HANGERS WHERE FIXTURES CAN NOT BE MOUNTED DIRECTLY TO CEILING OR STRUCTURE.

L6) WHERE LIGHT SWITCHES AND ABOVE-COUNTER RECEPTACLES ARE INDICATED TO BE MOUNTED ADJACENT TO EACH OTHER, THE DEVICES SHALL BE MOUNTED AT THE SAME HEIGHT UNDER A COMMON DEVICE PLATE. EXCEPT IN THE CASE WHERE THE VOLTAGES ARE DIFFERENT, THEY SHALL BE MOUNTED IN SEPARATE OUTLET BOXES.

L7) MOUNT SURFACE MOUNTED FIXTURES & UNDER CABINET FIXTURES TO INCREASE USE OF SPACE. LEAVE SPACES TO PROVIDE VENTILATION. PROVIDE VENT OFF WALL. FOR FIXTURES BELIEVE CABINETS, MAKE FLEXIBLE FINAL CONNECTIONS FROM JUNCTION BOX IN CEILING CAVITY AS VENT FIXTURES. DO NOT INSTALL OUTLET AT POINTS ALL WIRING SHALL BE CONCEALED.

L8) PROVIDE PROGRAMMABLE/SMART BALLASTS EVERYWHERE TWO SWITCHES ARE INDICATED FOR ONE SET OF FLUORESCENT FIXTURES. OUTDOOR LAMPS SHALL BE KEPT FROM THE SWITCH AND DOWNWARD LAMPS SHALL BE KEPT FROM THE SECOND. THE SWITCH NEAREST THE DOOR SHALL BE ARRANGED TO KEEP THE OUTDOOR LAMPS.

GENERAL POWER NOTES:

P1) PROVIDE TRANSFORMER PAD IN ACCORDANCE WITH UTILITY REQUIREMENTS. COORDINATE THE EXACT LOCATION OF THE PROPOSED TRANSFORMER AND UTILITY SERVICE POINT IN THE FIELD WITH THE UTILITY COMPANY. EXTEND BY CONDUIT FROM TRANSFORMER TO UTILITY SERVICE POINT. ALL WORK SHALL BE COORDINATE WITH UTILITY COMPANY TO PROVIDE METER ON SERVICE. LOCATE METER AS PER UTILITY COMPANY REQUIREMENTS. ALL COSTS ASSOCIATED WITH THE PAD, PRIMARY CONDUIT, METER AND PERMITS SHALL BE THE RESPONSIBILITY OF THE CONTRACTOR. FOR RECORD PURPOSES, IF A SERVICE POINT IS NOT SHOWN ON PLANS ASSUME IT SHALL BE 100' AND PROVIDE A DOLLAR POINT ADJUSTMENT FOR VARIANCES.

P2) THE SERVICE RIG CLUSTER FOR THE SERVICE BUILDING SHALL CONSIST OF 12 3/4" X 10" X 10" CONCRETE ENCASED COPPER CLAD STEEL GROUND RODS DRIVEN IN A DELTA CONFIGURATION AT 10' ON CENTER SPACING TOGETHER WITH NO. 4/0 GAGE COPPER. TOPS OF THE RODS SHALL BE AT 8' BGL. CONNECTION TO THE RODS SHALL BE WITH EXPLOSION WELD.

P3) ALL PROGRAMMABLE/SMART SWITCHES SHALL BE NO. 15 AND UL2000 NOTED OTHERWISE. WHERE CONDUIT AND RACEWAY SIZE ARE SHOWN AT MINIMUM, SIZE INDICATED SHALL BE USED FOR THE ENTIRE LENGTH OF CIRCUIT. EXCEPT FINAL CONNECTION TO DEVICES IN OUTLET BOXES SHALL NOT BE ASSUMED TO BE LARGER THAN NO. 15 AWG.

P4) WHEN A RECEPTACLE IS INDICATED TO BE MOUNTED ADJACENT TO A COMMUNICATIVE OUTLET, THE DEVICES SHALL BE MOUNTED WITH 6" CENTER-TO-CENTER.

P5) WHERE LIGHT SWITCH AND ABOVE-COUNTER RECEPTACLES ARE INDICATED TO BE MOUNTED ADJACENT TO EACH OTHER, THE DEVICES SHALL BE MOUNTED AT THE SAME HEIGHT UNDER A COMMON DEVICE PLATE.

P6) OUTLET BOXES FOR SWITCHES, RECEPTACLES, ETC. MOUNTED ON OPPOSITE SIDES OF FIRE RATED PARTITIONS SHALL NOT BE MOUNTED IN THE SAME WALL CAVITY. SEPARATE WALL PENETRATIONS BY MOUNTING ON OPPOSITE SIDES OF WALL STUDS OR OTHER VERTICAL STRUCTURAL MEMBER IN THE WALL.

P7) PROVIDE AND INSTALL AN ENGRAVED LAMINATED PLASTIC NAMEPLATE ON EACH DISCONNECT SWITCH TO INDICATE THE DESIGNATION OF THE EQUIPMENT SERVED & THE BRANCH CIRCUIT SERVING THE EQUIPMENT.

P8) INTERLOCK BRANT TRIP BREAKER FEEDS THE ELEVATOR CONTROLLER WITH THE FIRE ALARM CONTROL PANEL TO CUT POWER TO ELEVATOR WHEN SMOKE DETECTORS ARE INITIATED.

P9) EACH BRANCH CIRCUIT SERVING COMPUTER DC RECEPTACLES SHALL HAVE A SEPARATE NEUTRAL CIRCUIT. EACH SHALL HAVE SEPARATE DERATING CONDUCTORS WHICH SHALL BE GREEN WITH WHITE STRIPES IN ADDITION TO THE NORMAL EQUIPMENT GROUNDING MEANS. THE USE OF A COMMON NEUTRAL FOR MORE THAN ONE CIRCUIT IS NOT ACCEPTABLE.

P10) PROVIDE NEAR COMPUTATION RECEPTACLES TO WATCH PAGES ON EQUIPMENT PURPOSES.

ELECTRICAL SYSTEM AND EQUIPMENT METHOD OF COMPLIANCE	
NEW SPACE ONLY	
PRESCRIPTIVE	<input type="checkbox"/>
PERFORMANCE	<input checked="" type="checkbox"/>
CHECK WHETHER NOT REQUIRED	<input checked="" type="checkbox"/>
LIGHTING SCHEDULE	
LAMP TYPE REQUIRED IN FIXTURE	SEE FIXTURE SCHEDULE
NUMBER OF LAMPS IN FIXTURE	SEE FIXTURE SCHEDULE
BALLAST TYPE USED IN FIXTURE	SEE FIXTURE SCHEDULE
NUMBER OF BALLASTS IN FIXTURE	SEE FIXTURE SCHEDULE
TOTAL WATTAGE PER FIXTURE	SEE FIXTURE SCHEDULE
TOTAL INTERIOR WATTAGE (EXCEPT VUL. ALIGNED)	SEE FIXTURE SCHEDULE
WATTAGE EFFECTIVE OF EXTERIOR LIGHTS IS 4% UNDERWATT	
EQUIPMENT SCHEDULES WITH NON HVAC MOTORS:	
EQUIPMENT MANUFACTURER	
NUMBER OF PHASES	
WATTAGE EFFECTIVE	
MOTOR TYPE	
DESIGNER STATEMENT:	
TO THE BEST OF MY KNOWLEDGE AND BELIEF, THE DESIGN OF THIS BUILDING COMPLIES WITH THE ELECTRICAL SYSTEM AND EQUIPMENT REQUIREMENTS OF THE LATEST ADOPTED NORTH CAROLINA ELECTRIC CODE.	
SIGNED	
NAME: EDITH J. PAPPAS	
TITLE: ELECTRICAL ENGINEER	

GENERAL NOTES:

D1. ALL ELECTRICAL WORK SHALL BE IN ACCORDANCE WITH THE LATEST ADOPTED EDITION OF THE NATIONAL ELECTRICAL CODE AND ALL APPLICABLE LOCAL AND STATE CODES.

D2. ALL MATERIAL, EQUIPMENT AND APPLIANCES SHALL BE NEW AND SHALL CONFORM TO THE STANDARDS OF THE MANUFACTURERS LABORATORIES, INC. AND THE NATIONAL MANUFACTURERS ASSOCIATION.

D3. ALL ELECTRICAL PERMITS AND INSPECTION FEES SHALL BE OBTAINED AND PAID FOR BY THE ELECTRICAL CONTRACTOR.

D4. ELECTRICAL CONTRACT DRAWINGS ARE PARAMOUNT AND INDICATE THE GENERAL ARRANGEMENT OF ELECTRICAL EQUIPMENT. DO NOT SCALE ELECTRICAL PLANS. OBTAIN ALL DIMENSIONS FROM THE ARCHITECT'S DIMENSIONED DRAWINGS AND FIELD MEASUREMENTS. THE CONTRACTOR SHALL REVIEW ARCHITECTURAL PLANS FOR DOOR THRESHS AND BUILT-IN EQUIPMENT, CONDITIONS INDICATED IN THESE PLANS SHALL GOVERN FOR THIS WORK.

D5. VERIFY ALL REQUIREMENTS AND COORDINATE EXACT LOCATION OF BRACING EQUIPMENT SERVICE WITH LOCAL POWER COMPANY PRIOR TO PROJECT START. NOTIFY OFFICES OF ANY CHANGES.

D6. ELECTRICAL CONTRACTOR SHALL GUARANTEE ALL WORK AND MATERIALS FOR ONE YEAR EFFECTIVE FROM THE DATE OF SUBSTANTIAL COMPLETION.

D7. A COMPLETE BRACING SYSTEM SHALL BE PROVIDED AND INSTALLED IN ACCORDANCE WITH ARTICLE 130 OF THE NEC, AND AS SHOWN ON THE DRAWINGS.

D8. ALL CUTTING AND PATCHING REQUIRED FOR INSTALLATION OF ELECTRICAL EQUIPMENT SHALL BE THE RESPONSIBILITY OF THE ELECTRICAL CONTRACTOR. DO NOT CUT ANY MATERIAL THAT WILL WEAKEN THE STRUCTURE WITHOUT WRITTEN PERMISSION OF THE ARCHITECT. PATCHING SHALL BE ACCORDING TO MATCH ADJACENT SURFACES IN EVERY RESPECT. DAMAGE CAUSED BY ELECTRICAL CONTRACTOR SHALL BE REPAIRED BY THE CONTRACTOR.

D9. PROVIDE A TYPES CONDUIT IN ALL PENETRATIONS CLEARLY INDICATING THE LOCATION AND TYPE OF LOAD SERVED FOR ALL CIRCUITS.

D10. PROVIDE ENGRAVED PLASTIC NAMEPLATES FOR ALL PANELS, BOXES AND DISCONNECT SWITCHES. WHITE LETTERS ON BLACK BACKGROUND. NAMEPLATE SHALL CONTAIN EQUIPMENT DESIGNATION, VOLTAGE, FEEDER LABEL & DATE INSTALLED.

D11. PROVIDE FLASH HAZARD LABELS FOR ALL PANELS/BOXES IN ACCORDANCE WITH IEC REQUIREMENTS.

D12. ALL TERMINALS/BOXES SHALL BE 90 DEGREE/90 DEGREE RATED.

D13. FUSES 0-400 AMP SHALL BE UL CLASS "R" OR "L" LOW PEAK FUSE ELEMENT THE DELAY WITH 20000 AMPERE INTERRUPTING RATING AS MANUFACTURED BY SUGGESTED MANUFACTURER UNLESS NOTED OTHERWISE.

D14. ALL WATER WEATHER SHALL HAVE DISCONNECT SIZED PER UL1088.

D15. ELECTRICAL CONTRACTOR SHALL MAKE ALL FINAL ELECTRICAL CONNECTIONS TO EQUIPMENT REGARDLESS OF WHO SUPPLIES THE EQUIPMENT. THIS INCLUDES ALL HVAC PLUMBING AND OTHER PERMITS EQUIPMENT CONNECTIONS OF 50V OR HIGHER.

D16. RACEWAYS SHALL BE INSTALLED CONCEALED IN NEW WALL CONSTRUCTION ABOVE CEILING, BELOW FLOOR, AND IN OTHER CAVITIES TO THE GREATEST EXTENT POSSIBLE. WIRING EXPOSED RACEWAYS MUST BE PROTECTED BY RACEWAY PROTECTORS TO MAINTAIN THE NUMBER OF VERTICAL RUNS.

D17. ALL EXPOSED RACEWAYS SHALL BE NON-PARALLEL OR PERPENDICULAR TO THE BUILDING SURFACES AND SHALL BE PROTECTED AS DIRECTED BY THE ARCHITECT. EXPOSED CONDUIT SHALL BE ALLOWED IN FINISHED SPACES EXCEPT AS PERMITTED BY OWNER OR ARCHITECT. EXPOSED RACEWAYS IN FINISHED SPACES SHALL BE WIRING TYPE.

D18. BEFORE COMMENCING WITH ANY WORK, COORDINATE THE EXACT LOCATION AND MOUNTING HEIGHT OF ALL WALL MOUNTED DEVICES WITH THE ARCHITECTURAL INTERIOR PLUMBING, CARPENTRY, ROOF DRAINAGE, AND EXTERIOR CONDITIONS. IF ANY DISCREPANCIES ARE DISCOVERED, NOTIFY THE ARCHITECT FOR FURTHER INSTRUCTION. WORK ADJUSTMENTS IN OTHER LOCATION, LE-UP IN ANY DIRECTION SHALL BE DONE AT NO ADDITIONAL COST TO THE CONTRACTOR.

D19. ALL WIRING SHALL BE INSTALLED IN PVC, RMC, ETC. OF TYPES AC AND MC FLEXIBLE CABLES. ETC. CONDUIT TYPES SHALL ONLY BE USED UNDERGROUND AND OUTDOORS. WHERE NOT PERMITTED BY PHYSICAL CONSTRAINTS, WORKMAN SIZE CONDUIT SHALL BE 3/4". AC AND MC FLEXIBLE CABLES SHALL BE USED ONLY IN AREAS PROTECTED BY CODE.

D20. ALL PLEX SHALL BE LISTED TEST FLEXIBLE METAL.

D21. PROVIDE A PULL WIRE OR PULL TAPE IN ALL EMPTY CONDUITS. PROVIDE A BLANK COVER PLATE OVER ALL UNUSED BOXES INCLUDING DATA/COMM BOXES.

D22. WHERE A SINGLE NUMBER IS SHOWN THE CIRCUIT SHALL BE INSTALLED IN A DESIGNATED CIRCUIT, DO NOT COMBINE WITH OTHER CIRCUITS. WHERE A CIRCUIT NUMBER IS SHOWN THE CONTRACTOR SHALL COMBINE CIRCUITS AS FOLLOWS AND IN ACCORDANCE WITH THE NEC.

D23. A MAINBAY OF THREE 250 AMP MAINS CIRCUITS MAY BE COMBINED IN A COMMON MAINBAY PROVIDED A COMMON NEUTRAL OR WITH SEPARATE NEUTRALS, FOR A TOTAL OF 600 CIRCUIT CIRCUITS. ALL CIRCUIT CIRCUITS SHALL BE SEPARATELY NUMBERED TO PANEL.

D24. CONDUCTORS SHALL BE COPPER, BARE AT NOT LESS THAN 600 VOLTS NOMINAL RATED SHALL BE NO. 12 AWG UNLESS OTHERWISE NOTED ON THE DRAWINGS. ALL WIRE IN AIR AND LARGER SHALL BE STRANDED. NO. 10, 12, 14, 16 AWG CONDUCTORS SHALL BE SOLID. ALL INSULATION TYPES SHALL BE THIMBLEN.

D25. SEPARATE BRANCH CIRCUITS EXCEEDING 100' IN LENGTH FROM PANEL TO PATIENT DEVICE SHALL USE NO. 12 CONDUCTORS AND 3/4" DIA.

D26. FOR EVERY WIRING DEVICE MARK THE BRANCH CIRCUIT TO WHICH IT IS CONNECTED ON THE BACK OF EACH DEVICE PLATE, USING AN IMPERMANENT MARKER POK.

D27. ALL DEVICES AND DEVICE PLATES SHALL BE WHITE IN COLOR.

D28. EXACT LOCATION OF ALL FLOOR-HEATED OUTLETS SHALL BE COORDINATED WITH THE ARCHITECT BEFORE PROCEEDING.

D29. TWO OR MORE ADJACENT POWER OR COMMUNICATION RECEPTACLES SHALL BE SERVED WITH A COMMON DEVICE PLATE - IF THEY CANNOT BE SERVED THEY SHALL BE INSTALLED WITH A MINIMUM SPACING BETWEEN THEM.

D30. WALL RECEPTACLES SHOWN BACK TO BACK MAY BE OFFSET BUT SHALL BE DETALLED DIRECTLY ADJACENT TO ONE ANOTHER.

D31. LIGHT SWITCHES SHALL BE NO MORE THAN 6" FROM EDGE OF DOOR FRAME.

D32. WHERE PENETRATIONS ARE MADE THROUGH A WEATHER FINE-RESISTIVE WALL, FLOOR OR PARTITION FOR THE PURPOSE OF BRACING RACEWAYS, ELECTRICAL, TELEPHONE, TELEVISION OR LOCAL COMMUNICATION AND/OR SIGNALING CIRCUITS, THE OPENING AROUND THE RACEWAY SHALL BE FINE STRIPPED PER THE STATE BUILDING CODE. COORDINATION WITH THE GENERAL CONTRACTOR SHALL BE MAINTAINED TO INSURE THAT THIS FINE STRIPPING IS ACCORDING TO THE APPROVED MANUFACTURER'S BOOK AS FOLLOWS:

WEATHER PENETRATIONS OF 1 1/2" X 4" HOUR (77) BOARD WALLS - UL-181000
 MOUNT PENETRATIONS OF 1 1/2" X 4" HOUR CONCRETE OR BLOCK WALLS - UL-181000
 MOUNT PENETRATIONS OF 1 1/2" X 4" HOUR CONCRETE FLOORS - UL-181000
 MOUNT PENETRATIONS OF 1 HOUR OUTDOOR CEILING ASSEMBLY - LESS
 WALT. CONDUIT PENETRATIONS OF 1 1/2" X 4" HOUR CONCRETE OR BLOCK WALL OR FLOOR - CAN041

D33. IN REQUIRED FIRE RATED WALLS AND PARTITIONS, OPENERS FOR INSTALLATION OF BOXES THAT ARE GREATER THAN 16 SQUARE INCHES SHALL BE PROTECTED AS SHOWN BY UL. COORDINATE CLOSELY WITH THE GENERAL CONTRACTOR TO INSURE THAT THE INTEGRITY OF THE UL RATING IS MAINTAINED.

D34. OUTLET BOXES FOR DEVICES MOUNTED ON OPPOSITE SIDES OF FIRE RATED PARTITIONS SHALL NOT BE MOUNTED IN THE SAME WALL CAVITY. SEPARATE WALL PENETRATIONS BY MOUNTING ON OPPOSITE SIDES OF WALL STUDS OR OTHER VERTICAL STRUCTURAL MEMBER IN THE WALL.

D35. (EXHAUST WEATHER) ELECTRICAL EQUIPMENT SHALL MEET THE REQUIREMENTS OF SECTION 901.10.500.

ELECTRICAL SYMBOL LEGEND	
	BREAK IN CONDUCTOR. PARALLEL LINES INDICATE BREAK IN CONDUCTOR. IN OTHER WORDS, CONTINUATION OF HOT CONDUCTOR, BUT NOT NEUTRAL. ARROWS INDICATE RETURN BACK TO ELECTRICAL PANEL. NUMBER OF ARROWS INDICATES NUMBER OF CIRCUITS.
	ELECTRICAL CONNECTION TO EQUIPMENT
	JUNCTION BOX WALL MOUNTED AT 4" AFF OR HEIGHT INDICATED ON DRAWINGS.
	SINGLE POLE SWITCH, 15A, 120V/277V, 4" AFF. TO CENTER.
	MULTI-LEVEL SWITCHING. SWITCH BOARD AND OUTDOOR LAMPS SEPARATELY. SUBCIRCUIT "2" INDICATES THREE-WAY SWITCHING.
	2-WAY SWITCH, 15A, 120V/277V, 4" AFF. TO CENTER.
	4-WAY SWITCH, 15A, 120V/277V, 4" AFF. TO CENTER.
	MOTOR RATED SWITCH, 15A, 120V/277V.
	3-WAY SWITCH WITH SINGLE POLE SWITCH, 15A, 120V/277V, 4" AFF. TO CENTER.
	DUPLEX RECEPTACLE, 250, 120 VOLT, MOUNTED 4" ABOVE CENTER OR AT HEIGHT INDICATED. "4" AFF. INDICATES WEATHERPROOF. "1" AFF. INDICATES SAFETY TYPE.
	DOUBLE DUPLEX RECEPTACLE, 250 AMP, 120 VOLT, 4" AFF. TO CENTER.
	TELEPHONE/TELETYPE OUTLET, 4" AFF. TO CENTER, BY SWP CONDUIT STUBBED OUT ABOVE ACCESSIBLE CEILING. "4" AFF. INDICATES WALL MOUNTED AT 4" AFF. PROVIDE CAT 5 CABLES FROM TELETYPE DEVICE BACK TO MAIN TELETYPE BOARD.
	TELEPHONE BOARD, UNLESS NOTED OTHERWISE, PAINTED WITH FLAME RETARDANT PAINT. DETAIL AS CEILING TYPE. FROM BOARD TO SERVICE CIRCUIT.
	HEAVY DUTY BREAKER/TRANSFER SWITCH. NUMBERS INDICATE FRAME/POLE/AMPERE. PROVIDE 150A 1 POLARIZED BRK. PROVIDE 150A 24 ENCLASURE FOR ALL SWITCHES LOCATED OUTSIDE. "4" AFF. INDICATES FUSED PER MANUFACTURER'S INSTRUCTIONS.
	DOUBLE POLE SWITCH, PROVIDED AND INSTALLED BY MECHANICAL CONTRACTOR, WIRING BY ELECTRICAL CONTRACTOR.
	PANEL BOARD, RECESSED OR SURFACE MOUNTED. REFER TO PANEL BOARD SCHEDULES FOR ADDITIONAL DETAILS. DASHED LINES INDICATE LIMITS OF REQUIRED CLEARANCES.
	IF "X" FOLLOWED BY FLUORESCENT LIGHTING FIXTURE, SEE FIXTURE SCHEDULE FOR DETAILS. SHADING INDICATES FIXTURE IS AN UNSWITCHED NIGHTLIGHT.
	IF "X" FOLLOWED BY LIGHTING FIXTURE, SEE FIXTURE SCHEDULE FOR DETAILS. SHADING INDICATES FIXTURE IS AN UNSWITCHED NIGHTLIGHT.
	WALL MOUNTED LIGHTING FIXTURE, SEE FIXTURE SCHEDULE FOR DETAILS. SHADING INDICATES FIXTURE IS AN UNSWITCHED NIGHTLIGHT.
	CEILING MOUNTED LIGHTING FIXTURE, SEE FIXTURE SCHEDULE FOR DETAILS. SHADING INDICATES FIXTURE IS AN UNSWITCHED NIGHTLIGHT.
	EXIT LIGHT, WALL AND CEILING MOUNTED RESPECTIVELY. SHADING INDICATES FACE PROVIDE EMERGENCY BATTERY PACK RATED FOR 90 MINUTES OF OPERATION.
	COMMUNICATION EXIT AND EMERGENCY LIGHT, WALL MOUNTED. SHADING INDICATES FACE PROVIDE EMERGENCY BATTERY PACK RATED FOR 90 MINUTES OF OPERATION.
	EMERGENCY LIGHT, SURFACE AND CEILING MOUNTED. REFER TO FIXTURE SCHEDULE FOR ADDITIONAL INFORMATION.
	FIRE ALARM CONTROL PANEL, FLUSH MOUNTED.
	FIRE ALARM ANNUNCIATOR PANEL.
	SMOKE DETECTOR. DETECTOR SHALL BE PROVIDED AND WIRING BY E.C. AND INSTALLED BY M.C. REFER TO MECHANICAL PLANS FOR EXACT LOCATIONS AND QUANTITIES.
	DUAL CHAMBER IONIZATION OR PHOTOELECTRIC TYPE SMOKE DETECTOR CONNECTED TO FIRE ALARM PANEL. UNIT SHALL HAVE 6" HIGH 3" WIDE BY 3" DEEP CONICAL LAMP, TEST SWITCH AND ALL LISTING. "1" INDICATES ELEVATOR ESCAL.
	FIXED TEMPERATURE HEAT DETECTOR. FOR DETECTORS IN ELEVATOR EQUIPMENT ROOMS, TEMPERATURE SHALL BE SET LOWER THAN AMBIENT HEAD TEMPERATURE.
	FIRE ALARM SYSTEM SPEAKER/TAMPER SWITCH.
	FIRE ALARM SYSTEM CONTROL PANEL.
	VISUAL ONLY FIRE ALARM SYSTEM INDICATING DEVICE. ADJACENT NUMBER INDICATES CANDELLAS RATING OTHER THAN DEFAULT RATING OF 15 CANDELLAS. MOUNT 4" AFF.
	AUDIBLE ONLY FIRE ALARM SYSTEM INDICATING DEVICE. ADJACENT NUMBER INDICATES CANDELLAS RATING OTHER THAN DEFAULT RATING OF 15 CANDELLAS. MOUNT 4" AFF.
	CAMERA TO BE PROVIDED BY THE NETWORK COMPANIES.
	INTERCOM TO BE PROVIDED BY THE NETWORK COMPANIES.
	SET POINT TO BE PROVIDED BY THE NETWORK COMPANIES.
	A/C AND FAULT CIRCUIT INTERRUPT
	ABOVE FINISHED FLOOR
	ABOVE FINISHED GRADE
	AUTHORITY WAIVER JURISDICTION
	AIR HANDLING UNIT
	CONDUIT
	COOLING UNIT
	ELECTRIC WATER COOLER
	FLOOR PLATE MARKING
	HEAT PUMP
	NON-FUSED
	NOT TO SCALE
	GROUND FAULT INTERRUPTER
	INSULATED CONDUIT
	ROOF TOP UNIT
	TRANSFORMER
	UNLESS OTHERWISE NOTED
	WATER HEATER
	WEATHERPROOF

* E.C. SHALL VERIFY ALL CONDUIT AND CONDUIT REQUIREMENTS WITH THE VENDOR PRIOR TO ORDER.

ELECTRICAL DRAWING INDEX	
D1	LEGEND, FIXTURE SCHEDULE AND NOTES
D2	FIRST FLOOR ELECTRICAL POWER PLAN
D3	FIRST FLOOR ELECTRICAL LIGHTING PLAN
D4	SECOND FLOOR ELECTRICAL POWER PLAN
D5	SECOND FLOOR ELECTRICAL LIGHTING PLAN
D6	THIRD FLOOR ELECTRICAL POWER PLAN
D7	THIRD FLOOR ELECTRICAL LIGHTING PLAN
D8	FOURTH FLOOR ELECTRICAL POWER PLAN
D9	FOURTH FLOOR ELECTRICAL LIGHTING PLAN
D10	ELECTRICAL SITE LIGHTING PLAN
D11	ELECTRICAL PANEL SCHEDULES
D12	ELECTRICAL SYMBOLS AND DETAILS



ADW

Architects, p.a.

ADW Architects, p.a.
 1401 West Morehead Street, Suite 100
 Charlotte, NC 28208
 704.379.1919 Fax 704.379.1920
 www.adwarchitects.com

Ballantyne Commons Storage Facility

dmi

CHARLOTTE, NC

VP

VICTOR PAPPAS
 Consulting Engineer, PA
 101 N. McDowell St.
 Suite 120
 Charlotte, NC 28204
 (704) 372-7751
 (704) 372-7799
 www.vpeet.com

LEGEND, FIXTURE SCHED. AND NOTES

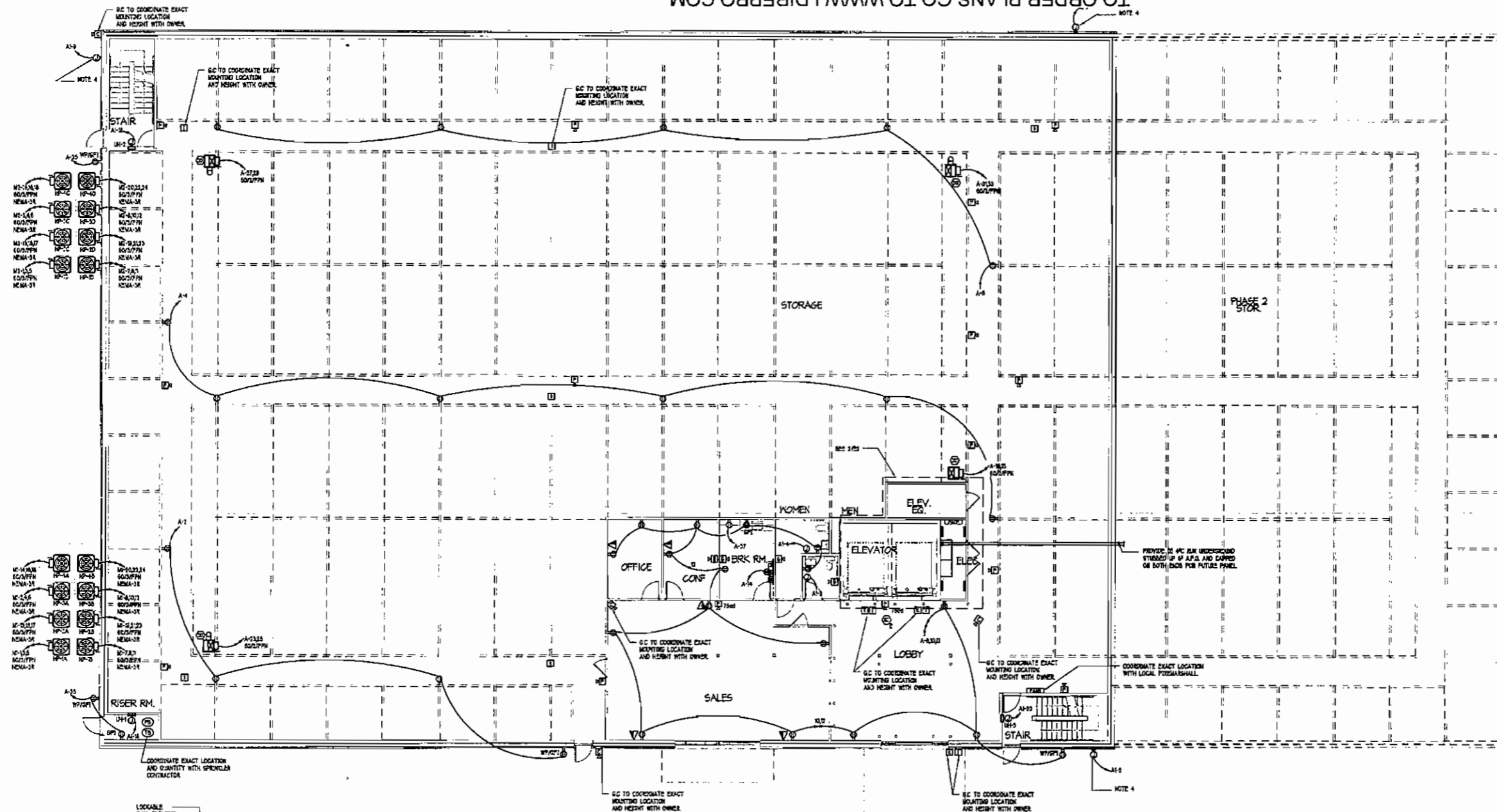
DATE: 05/09/07 JOB NO.: 07031

REVISIONS:
 NO. DATE DESCRIPTION FOR PRICING ONLY

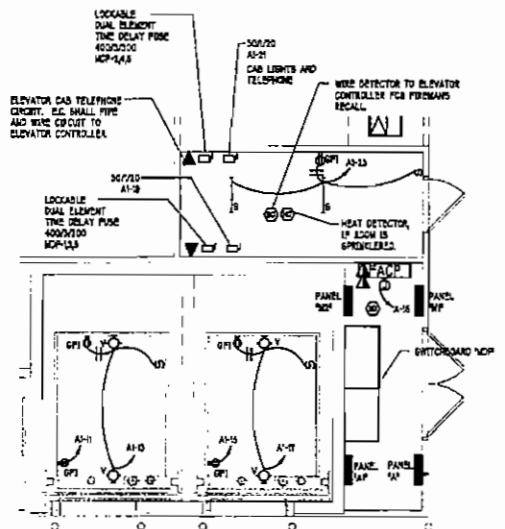
SEAL 077935

E1

1 of 12 Total



1 FIRST FLOOR ELECTRICAL POWER PLAN



2 ENLARGED ELEVATOR AND EQUIPMENT ROOM PLAN

NOTE:

1. E.C. SHALL USE COPPER FOR ALL WIRING FROM PANEL BOX.
2. ALL WIRING SHALL BE IN DIRT OR ARMORED CABLE, SAVE FOR HVAC.
3. WIRING SHALL BE IN DIRT OR ARMORED CABLE, SAVE FOR HVAC.
4. COORDINATE WITH EXTERIOR ARCHITECTURAL ELEVATIONS FOR EXACT LOCATIONS OF SIGNS.
5. ALL CONDUITS SHALL BE RUN INSIDE THE WALLS AND ELECTRICAL BOXES SHALL BE LOCATED WITHIN THE STORAGE AREAS AND LOCATED AT SWITCH PLATE LEVEL WITH WHITE FACE PLATES TYPICAL FOR ALL DEVICES SHOWN IN CORRIDOR AREAS.

← PHASE 1 PHASE 2 →



Architects, p.a.

ADW Architects, p.a.
1401 West Morehead Street, Suite 100
Charlotte, NC 28208
704.379.1919 Fax 704.379.1920
www.adwarchitects.com

Ballantyne Commons
Storage Facility

dmi

CHARLOTTE, NC



VELTOS PAPPAS
Consulting Engineers, PA
101 N. McDowell St.
Suite 120
Charlotte, NC 28204
(704) 372-7755
(704) 372-7789
www.vpe.com

FIRST FLOOR
ELECTRICAL
POWER
PLAN

DATE 05/09/07 JOB NO: 07031

NO. DATE DESCRIPTION
0001 05/09/07 FOR PROCEEDING ONLY



SHEET NUMBER
E2
2 of 12 Total



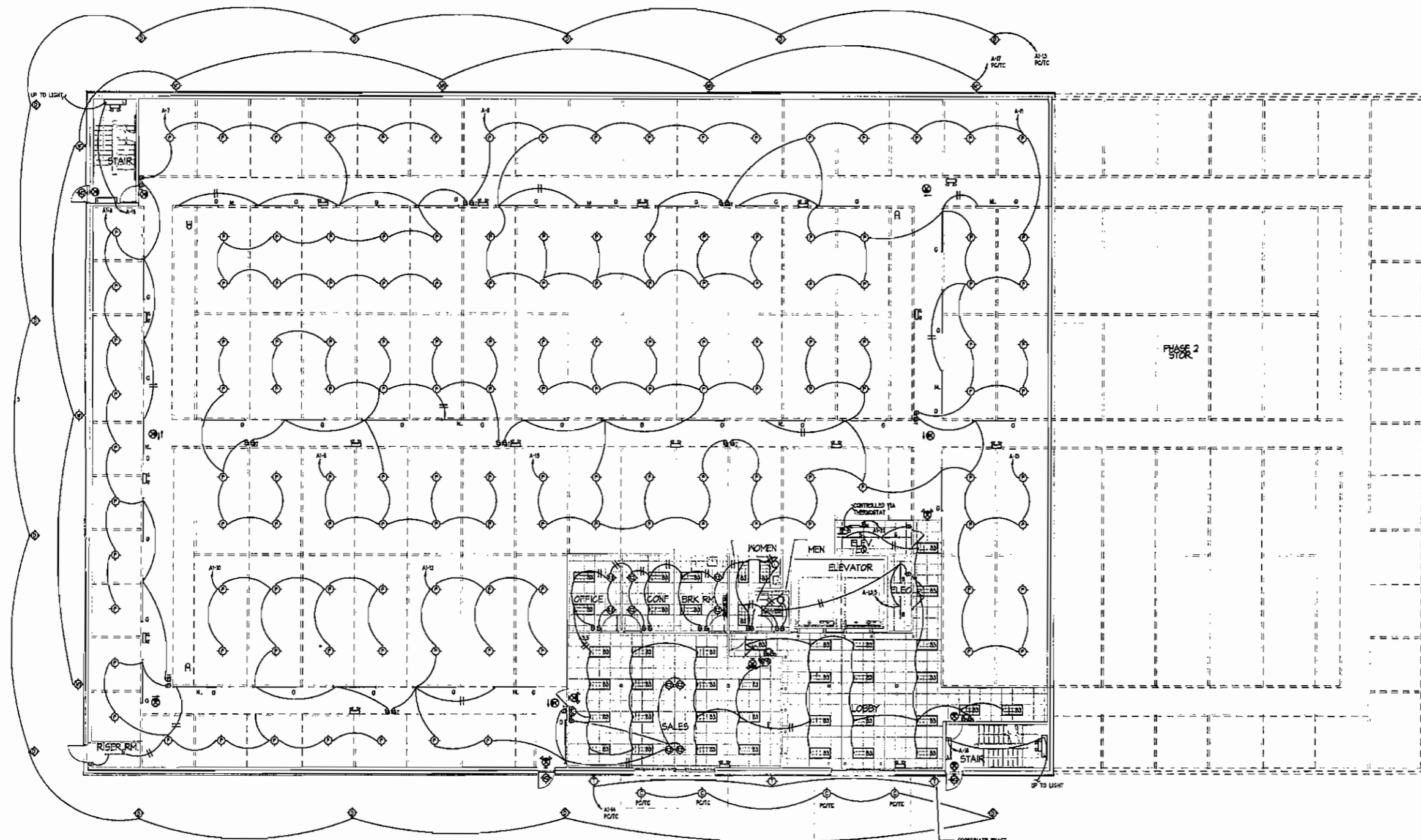
Architects, p.a.

ADW Architects, p.a.
 1401 West Morehead Street, Suite 100
 Charlotte, NC 28208
 704.379.1919 Fax 704.379.1920
 www.adwarehitects.com

Ballantyne Commons
 Storage Facility

dmi

CHARLOTTE, NC



NOTE:
 1. ALL TYPE 'UP' LIGHTS SHALL BE WALL-MOUNTED. MOUNT PROTRUSION ABOVE THE SHALL FROM THE WALLS. USE DEPTH STORAGE UNITS.
 2. ALL 3-WAY AND 4-WAY LIGHT SWITCHES IN STORAGE AREA SHALL BE 30 MINUTE TIME SWITCH.

FIRST FLOOR ELECTRICAL LIGHTING PLAN
 1/8" = 1'-0"

← PHASE 1 PHASE 2 →

VP
 VRETTOS PAPPAS
 Consulting Engineers, PA
 101 N. McDowell St
 Suite 120
 Charlotte, NC 28204
 704.372.7781
 704.372.7799
 www.vpce.com

FIRST FLOOR
 ELECTRICAL
 LIGHTING
 PLAN

DATE: 05/09/07 JOB NO: 07031

REVISIONS:
 NO. DATE DESCRIPTION
 06/07 FOR PUNCH ONLY

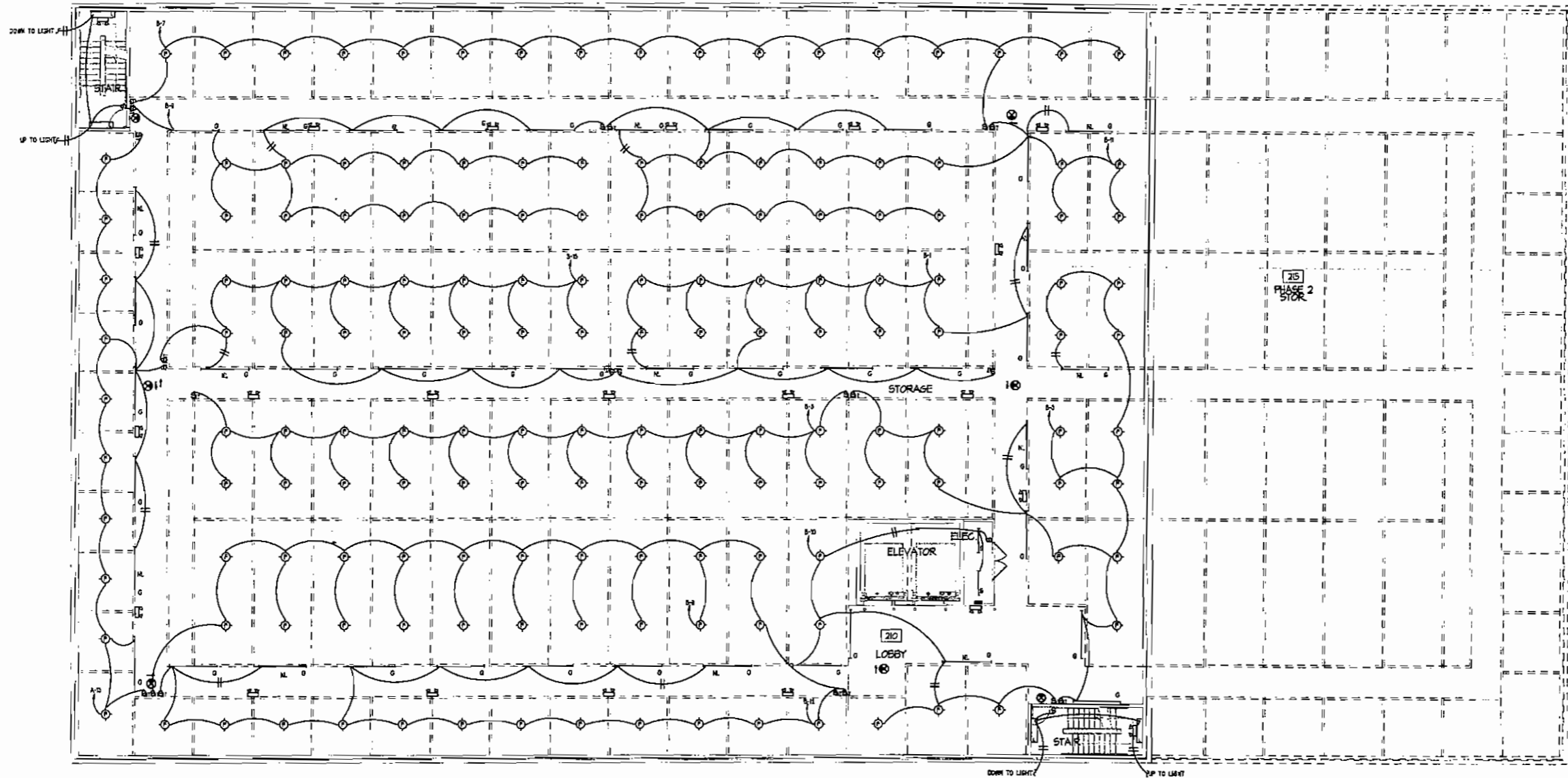
PROFESSIONAL SEAL
 027936
 VRETTOS PAPPAS
 REGISTERED PROFESSIONAL ENGINEER
 STATE OF NORTH CAROLINA

REVISION NUMBER
E3
 3 of 12 Total



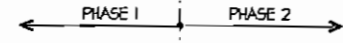
Architects, p.a.

ADW Architects, p.a.
 1401 West Morehead Street, Suite 100
 Charlotte, NC 28208
 704.379.1919 Fax 704.379.1920
 www.adwarchitects.com



NOTE:
 1. ALL TYPE OF LIGHTS SHALL BE WALL MOUNTED. MOUNT FIXTURES ACROSS THE HALL FROM THE SMALLER SOUTH STORAGE UNITS.
 2. ALL 3-WAY AND 4-WAY LIGHT SWITCHES IN STORAGE AREA SHALL BE 30 MOUTE TYPE SWITCHES.

1 SECOND FLOOR ELECTRICAL LIGHTING PLAN
 E5



Ballantyne Commons Storage Facility

dmi

CHARLOTTE, NC

VP VRETOS PAPPAS
 Consulting Engineers, PA
 101 N. McDowell St
 Suite 110
 Charlotte, NC 28204
 (704) 372-7755
 (704) 372-7799
 www.vpcer.com

SECOND FLOOR ELECTRICAL LIGHTING PLAN

DATE: 05/09/07 JOB NO: 07031

NO. DATE DESCRIPTION
 06/04/07 FOR PRICING ONLY

PROFESSIONAL SEAL
 027936
 E5
 5 of 12 Total



Architects, p.a.

ADW Architects, p.a.
1401 West Morehead Street, Suite 100
Charlotte, NC 28208
704.379.1919 Fax 704.379.1920
www.adwarchitects.com

Ballantyne Commons
Storage Facility

dmi

CHARLOTTE, NC

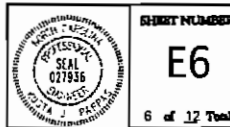


VLETOS PAPPAS
Consulting Engineers, PA
101 N. McDowell St.
Suite 125
Charlotte, NC 28104
07.704.372.7755
07.704.372.7749
www.vpce.com

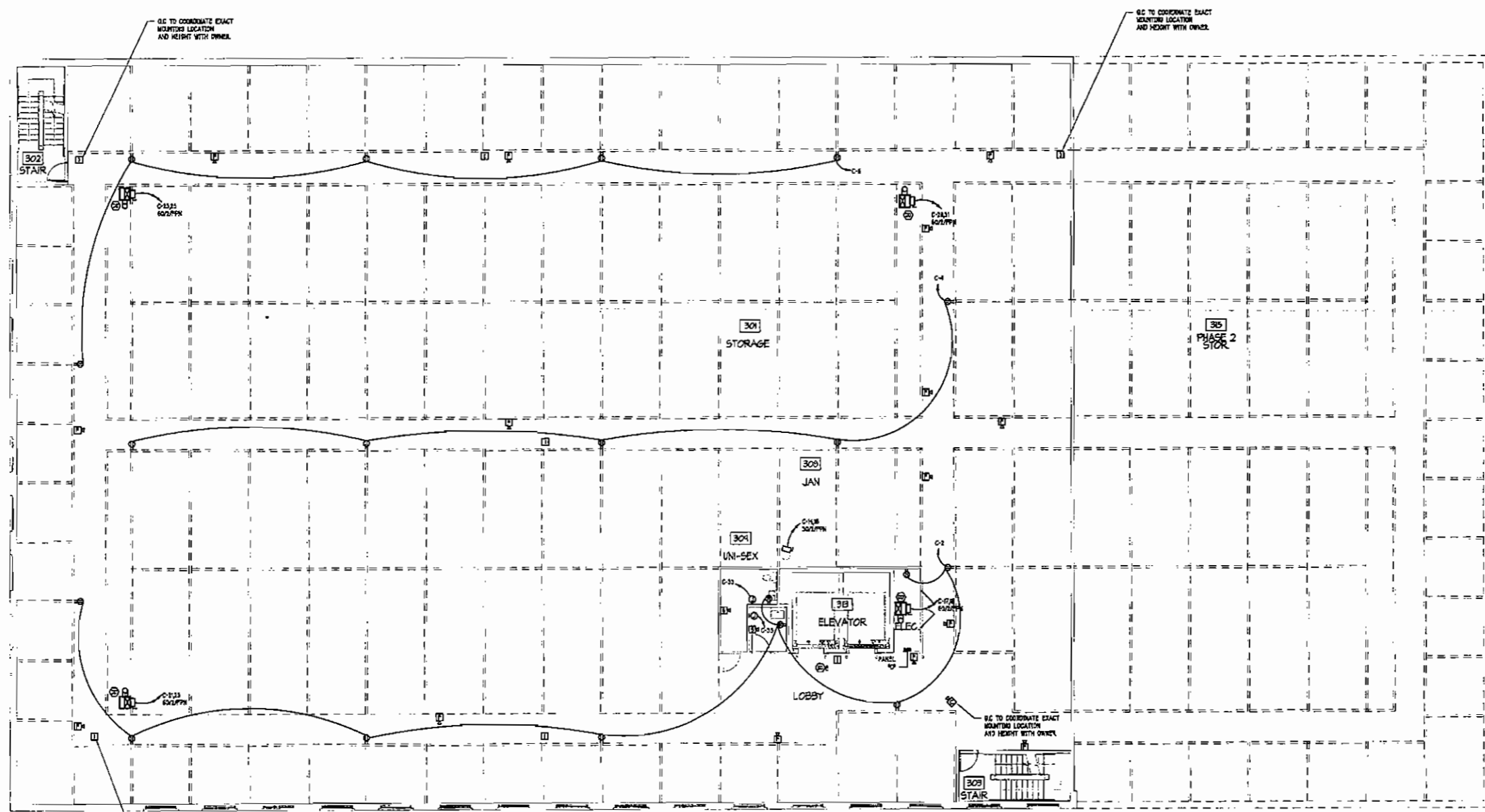
THIRD FLOOR
ELECTRICAL
POWER
PLAN

DATE: 05/09/07 JOB NO: 07031

NO. DATE DESCRIPTION
0600 FOR PENDING ONLY

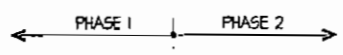


CLIENT NUMBER
E6
6 of 12 Total



NOTE:
1. EC SHALL USE COPPER FOR ALL WIRING FROM PANEL. SEE
2. ALL WIRING SHALL BE IN CONDUIT OR ARMORED CABLE, UNLESS OTHERWISE NOTED.
3. WIRING BRASS WALL PLATES ARE TO BE USED IN ALL PUBLIC OFFICE
AREAS AND THE VERTICAL OPENING.
4. COORDINATE WITH EXTERIOR ARCHITECTURAL ELEVATIONS FOR EXACT
LOCATIONS OF BOXES.
5. ALL CONDUIT SHALL BE RUN INSIDE THE WALLS AND ELECTRICAL
BOXES SHALL BE LOCATED WITHIN THE STORAGE AREAS AND LOCATED AT
SWITCH PLATE LEVEL WITH WHITE FACE PLATES TYPICAL FOR ALL
DEVICES SHOWN IN CORRIDOR AREAS.

1 THIRD FLOOR ELECTRICAL POWER PLAN
E6





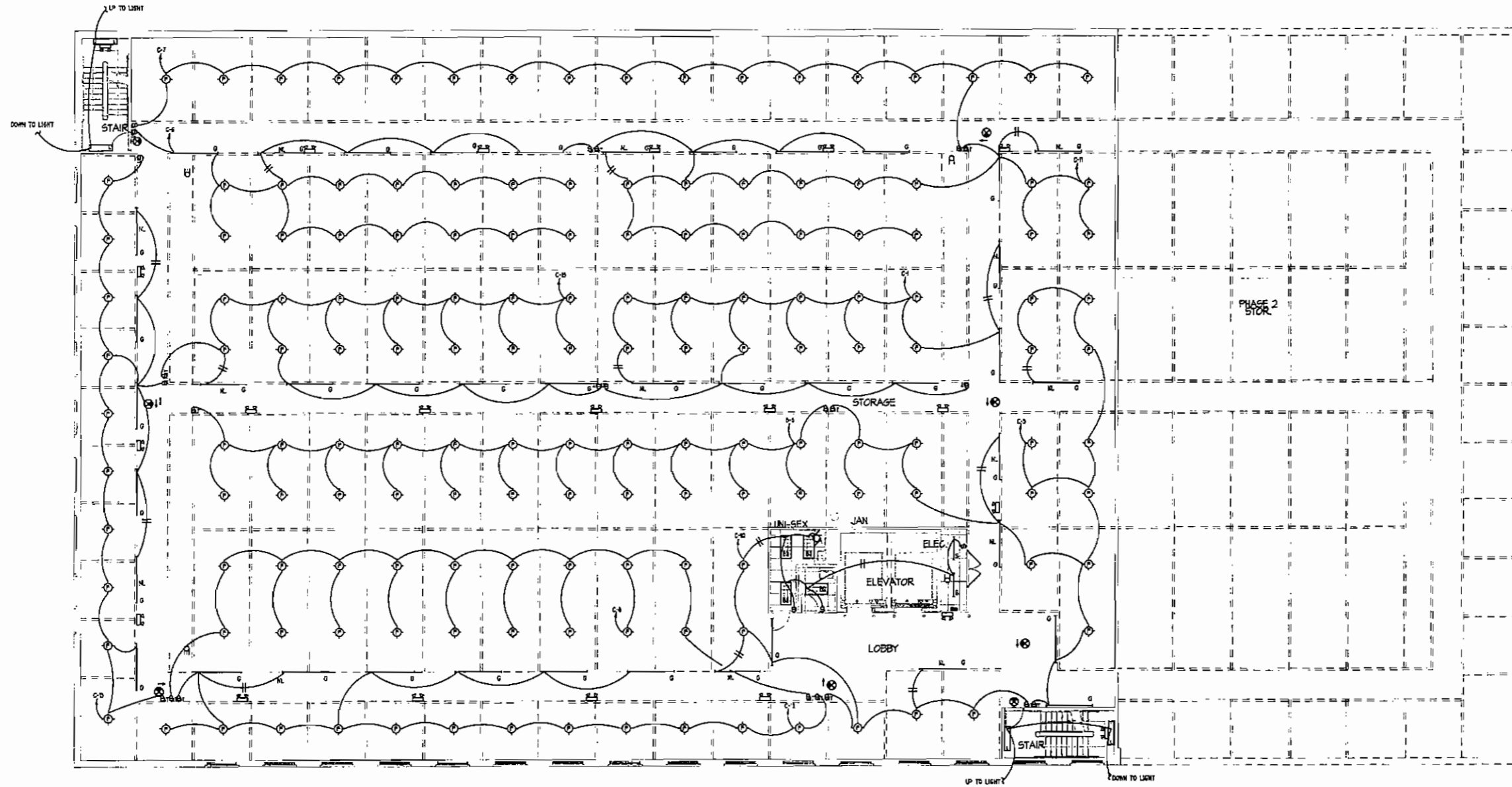
Architects, p.a.

ADW Architects, p.a.
 1401 West Morehead Street, Suite 100
 Charlotte, NC 28208
 704.378.1919 Fax 704.379.1920
 www.edwarchitects.com

Ballantyne Commons
 Storage Facility

dmi

CHARLOTTE, NC



NOTE:
 1. ALL TYPE RP LIGHTS SHALL BE WALL MOUNTED WITH FIXTURES ACROSS THE HALL FROM THE SHALLOW DEPTH STORAGE UNITS.
 2. ALL 3-WAY AND 4-WAY LIGHT SWITCHES IN STORAGE AREA SHALL BE 30 MINUTE TIME SWITCH.

1 THIRD FLOOR ELECTRICAL LIGHTING PLAN
 17 1/8" x 11"

← PHASE 1 | PHASE 2 →



VLETTOS PAPPAS
 Consulting Engineers, P.A.
 101 N. McDowell St.
 Suite 120
 Charlotte, NC 28204
 (704) 372-7755
 (704) 372-7799
 www.vpec.com

THIRD FLOOR
 ELECTRICAL
 LIGHTING
 PLAN

DATE: 05/09/07 JOB NO: 07031

REVISIONS:
 NO. DATE DESCRIPTION
 05/07 FOR RECORD ONLY



SHEET NUMBER
E7
 7 of 12 Total



Architects, p.a.

ADW Architects, p.a.
 1401 West Morehead Street, Suite 100
 Charlotte, NC 28208
 704.379.1819 Fax 704.379.1920
 www.adwarchitects.com

Ballantyne Commons
 Storage Facility

dmi

CHARLOTTE, NC

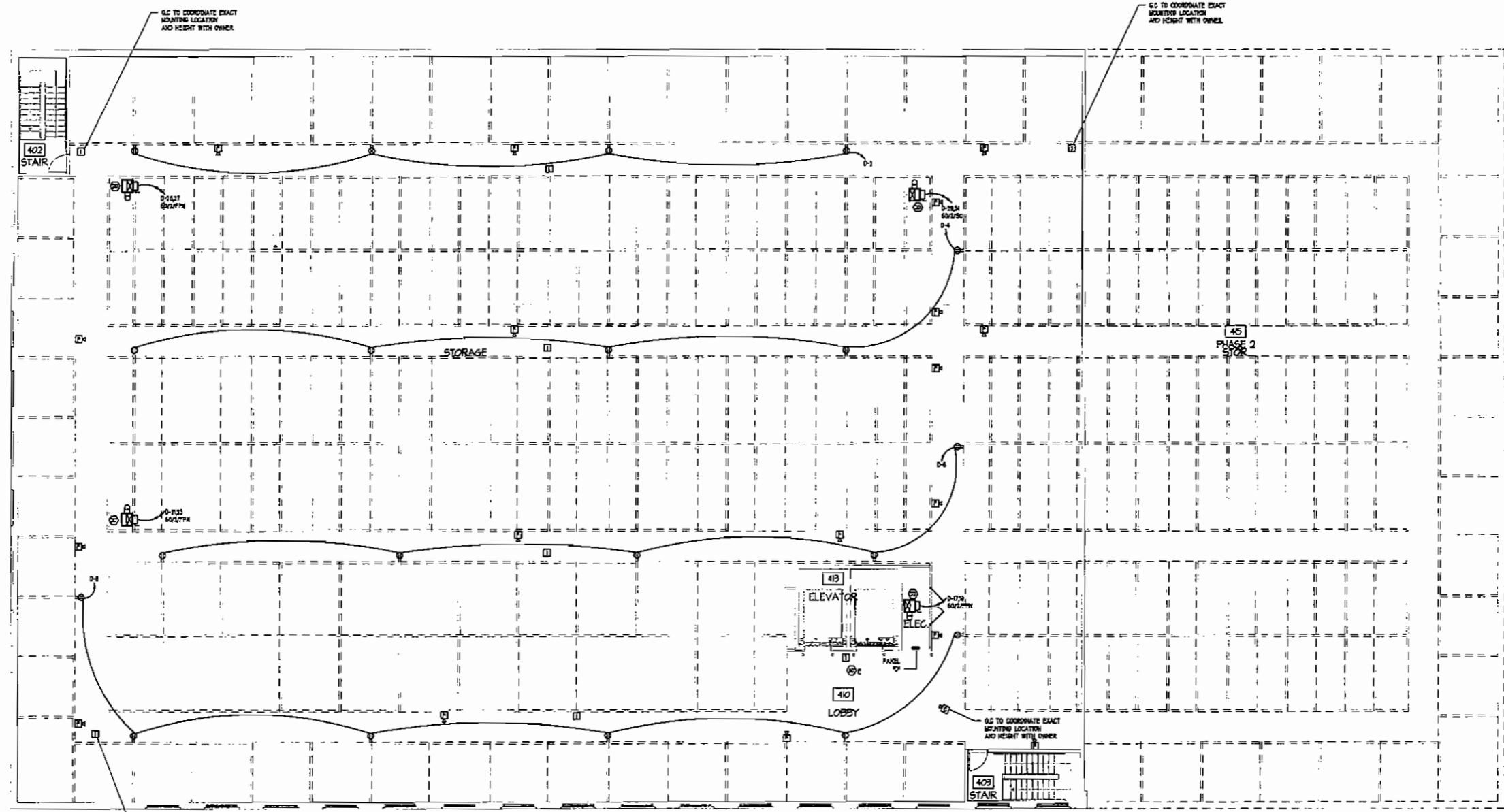


FOURTH FLOOR
 ELECTRICAL
 POWER
 PLAN

DATE: 05/09/07 JOB NO: 07031

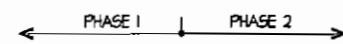
REVISIONS:
 NO. DATE DESCRIPTION
 0509 FOR RECORD ONLY

SEAL NUMBER
 E8
 8 of 12 Total



NOTE:
 1. E.C. SHALL USE COPPER FOR ALL WIRING FROM PANEL BOX.
 2. ALL WIRING SHALL BE IN CONDUIT OR ARMORED CABLE BEND FOR W/MAC.
 3. WIRING SHALL BE IN CONDUIT OR ARMORED CABLE BEND FOR W/MAC.
 4. COORDINATE WITH EXTERIOR ARCHITECTURAL ELEVATIONS FOR EXACT LOCATIONS OF WIRING.
 5. ALL CONDUITS SHALL BE RUN ABOVE THE WALLS AND ELECTRICAL BOXES SHALL BE LOCATED WITHIN THE STORAGE AREAS AND LOCATED AT SWITCH PLATE LEVEL WITH WHITE FACE PLATES TYPICAL FOR ALL DEVICES SHOWN IN CORRIDOR AREAS.

FOURTH FLOOR ELECTRICAL POWER PLAN





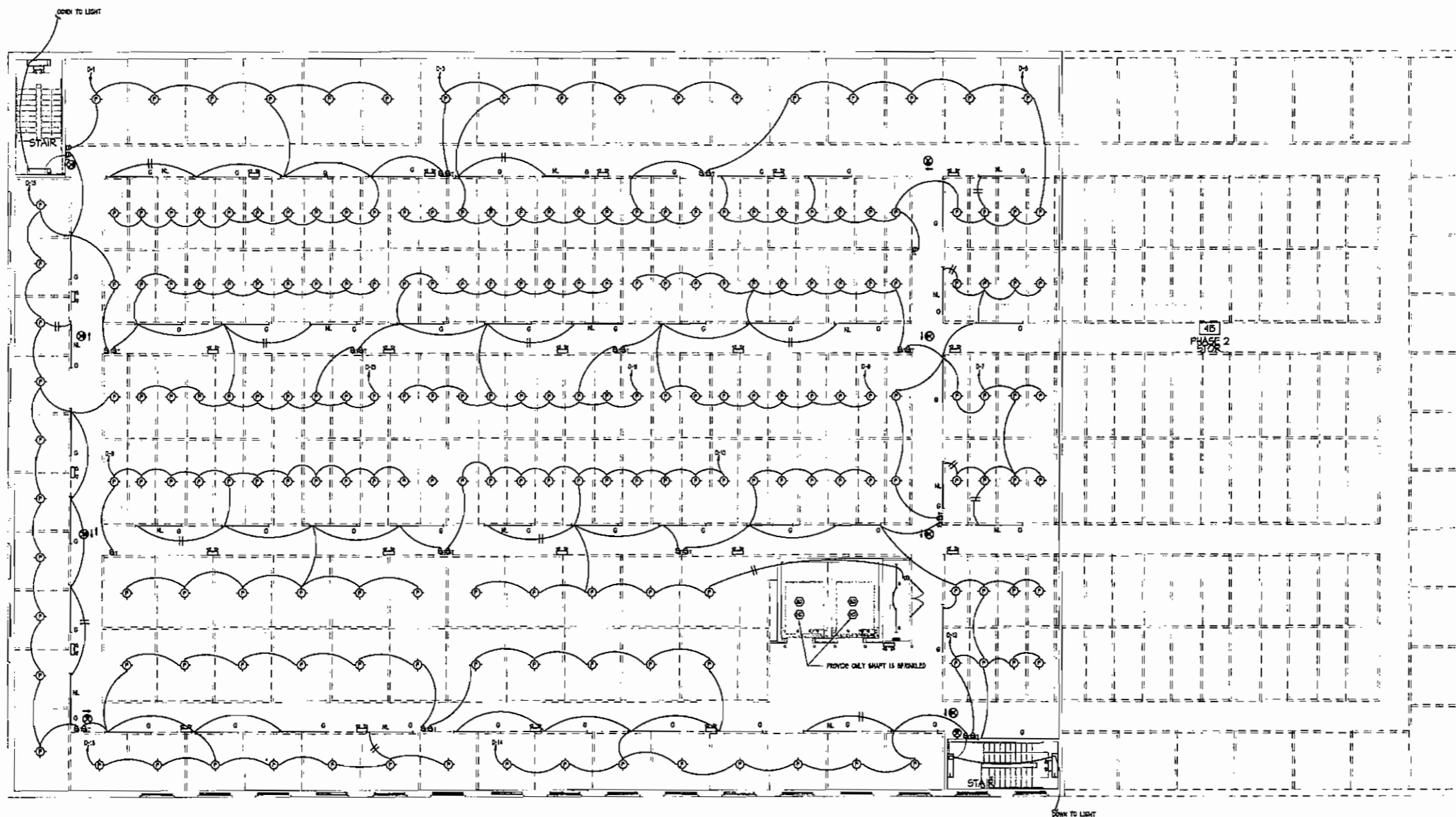
Architects, p.a.

ADW Architects, p.a.
 1401 West Morehead Street, Suite 100
 Charlotte, NC 28208
 704.379.1919 Fax 704.379.1920
 www.adwarchitects.com

Ballantyne Commons
 Storage Facility

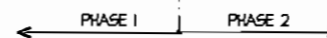
dmi

CHARLOTTE, NC



NOTE:
 1. ALL TYPE 40' LIGHTS SHALL BE WALL MOUNTED. MOUNT FIXTURES ACROSS THE HALL FROM THE SMALLER DEPTH STORAGE UNITS.
 2. ALL 3-WAY AND 4-WAY LIGHT SWITCHES IN STORAGE AREA SHALL BE 30 MINUTE TIMER SWITCH.

1 FOURTH FLOOR ELECTRICAL LIGHTING PLAN



VRETTOS PAPPAS
 Consulting Engineers, PA
 101 N. McDowell St.
 Suite 110
 Charlotte, NC 28204
 (704) 372-7755
 (704) 372-7799
 www.vpc.com

FOURTH FLOOR
 ELECTRICAL
 LIGHTING
 PLAN

DATE: 05/09/07 JOB NO: 07031

REVISIONS:
 NO. DATE DESCRIPTION
 06/07 FOR PRICING ONLY



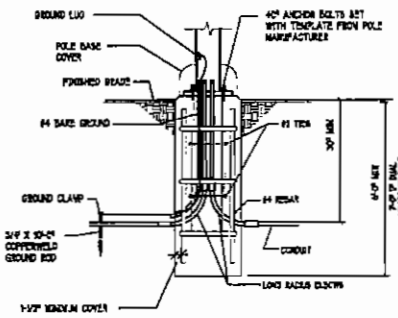
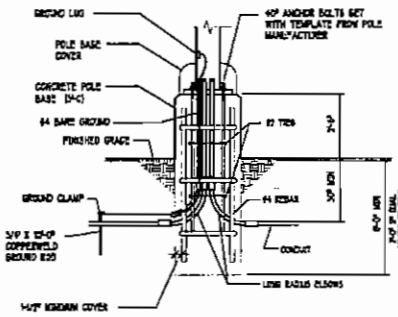
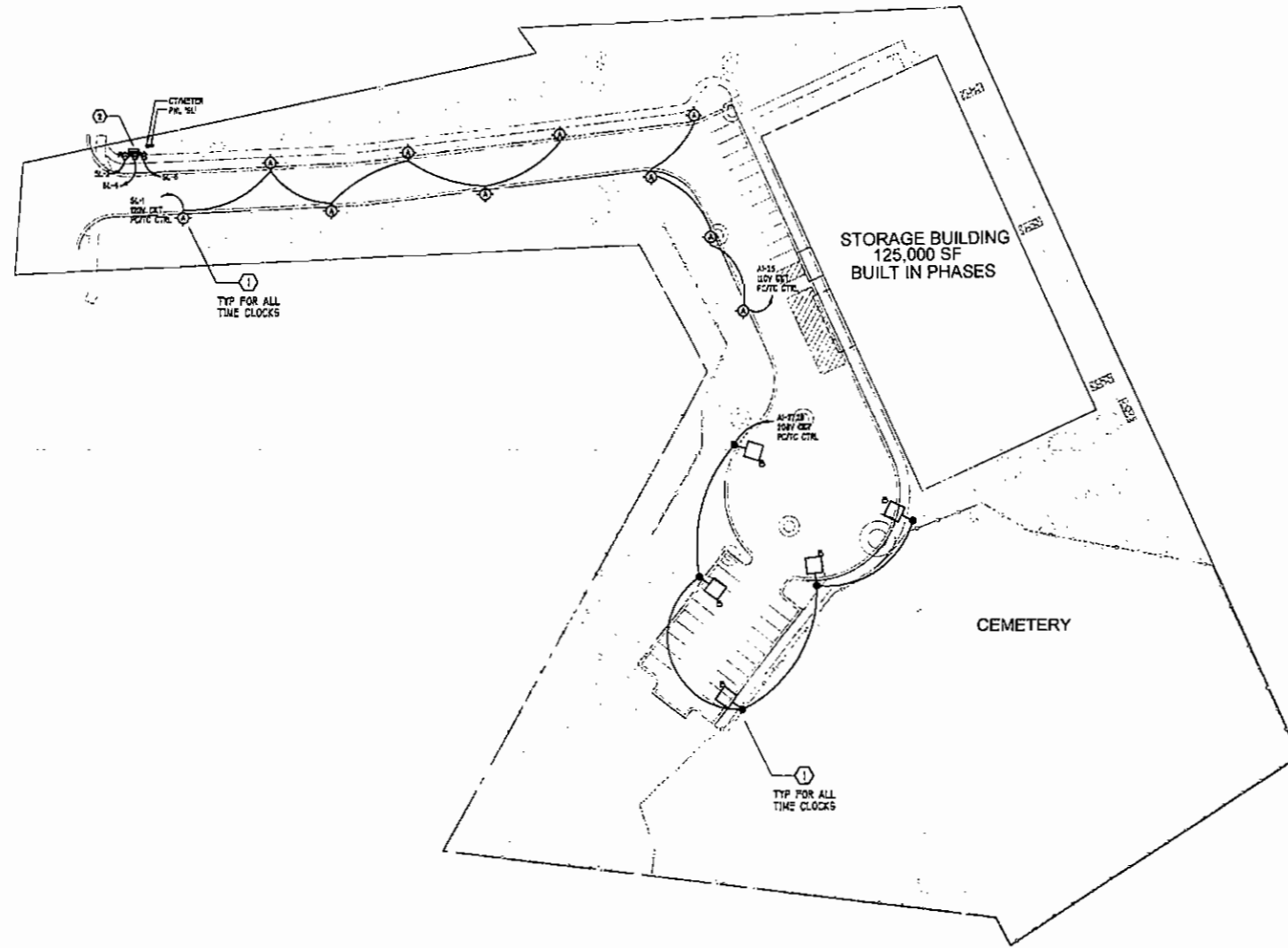
SHEET NUMBER

E9

9 of 12 Total

TAGGED NOTES

- ① THE ELECTRICAL CONTRACTOR SHALL SYNCHRONIZE ALL TIME CLOCKS AS CLOSELY AS POSSIBLE TO HOUSE KEYS TO LIGHTS ACTIVITIES
- ② ELECTRICAL POWER FOR THE POLE BASE THE DC SHALL COORDINATE WITH THE SIGN MANUFACTURER FOR THE EXACT ELECTRICAL REQUIREMENTS FROM THE DESIGN OR CONTACT THE ELECTRICAL BUSINESS IF THE REQUIREMENTS DIFFER FROM WHAT IS SHOWN



② POLE BASE DETAILS
E10
1/13

① ELECTRICAL SITE PLAN
E10
1/13

VOLTAGE DROP TABLE

AMPS	VOLTAGE	WIRE SIZE	ONE-WAY DISTANCE FOR 5% DROP
50	120V L-N	10	90 FEET
50	120V L-N	8	280 FEET
50	120V L-N	6	440 FEET
50	208V L-L, W	10	150 FEET
50	208V L-L, W	8	350 FEET
50	208V L-L, W	6	500 FEET

* ALL VALUES TAKEN FROM ESE VOLTAGE DROP CALCULATOR

ADW
Architects, p.a.
ADW Architects, p.a.
1401 West Morehead Street, Suite 100
Charlotte, NC 28206
704.379.1919 Fax 704.379.1920
www.adwarchitects.com

Ballantyne Commons Storage Facility

dmi

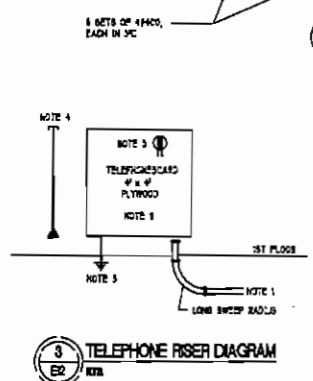
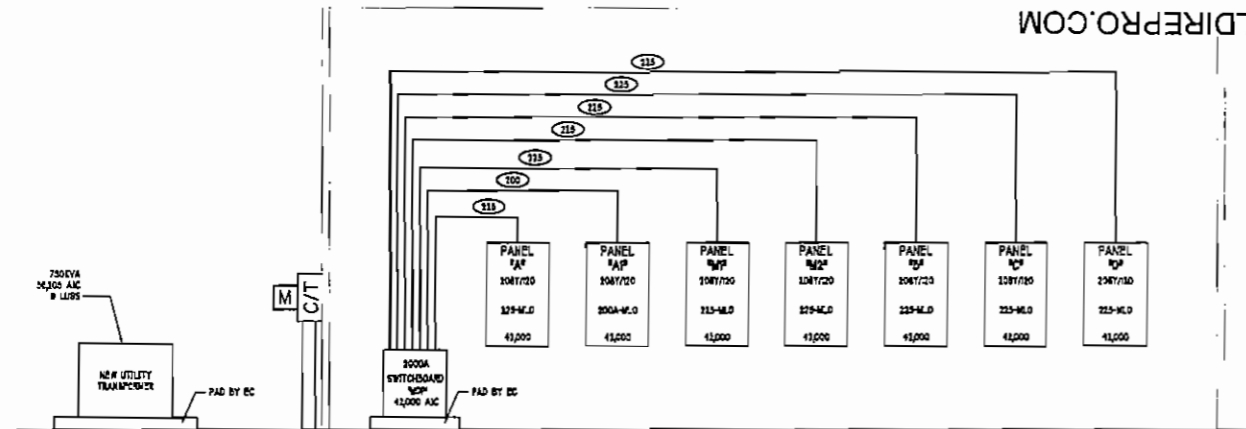
CHARLOTTE, NC

VICTOR PAPPAS
Consulting Engineers, PA
101 W. McDowell St.
Suite 150
Charlotte, NC 28204
(704) 372-7755
(704) 372-7759
www.vpcen.com

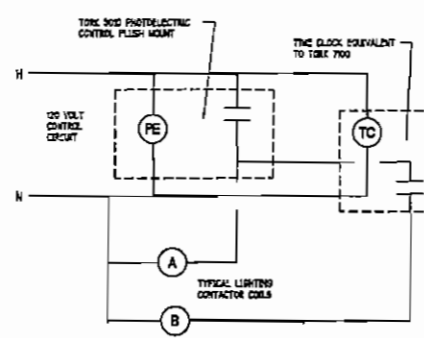
ELECTRICAL SITE LIGHTING PLAN

DATE: 05/09/07 JOB NO: 07031
REVISIONS:
NO. DATE DESCRIPTION
0000 FOR RECORD ONLY

SEAL NUMBER
E10
10 of 12 Total

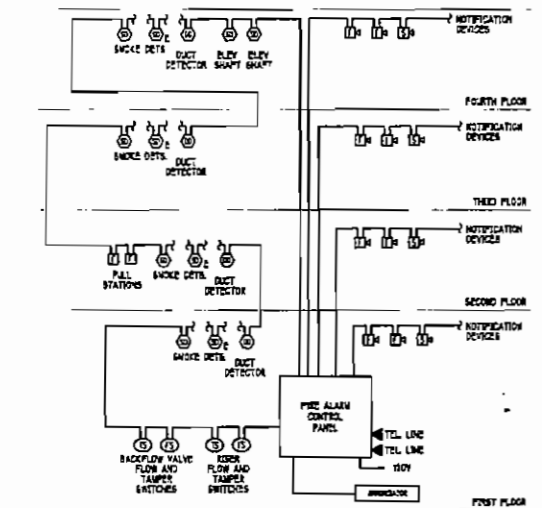


TELEPHONE RISER NOTES:
 1. 3/4" PINK GRADE PLYWOOD BACKBOARD PAINTED WITH PLAIN RETARDANT PAINT. MOUNT 3/4" APF TO BOTTOM OF BOARD.
 2. PROVIDE DUPLEX RECEPTACLE ON A DEDICATED CIRCUIT FOR TELEPHONE AND OTHER COMMUNICATION EQUIPMENT.
 3. PROVIDE CAT 5 STYLE TELEPHONE CABLE BETWEEN ALL TELEPHONE CIRCULARS AND TELEPHONE BOARD.
 4. PROVIDE #12 CU GROUND TO SERVICE GROUND BAR WITH ADEQUATE SLACK FOR GROUNDING OF TELEPHONE EQUIPMENT.



SEQUENCE OF OPERATION:
 1. COORDINATE WITH THE OWNER AS TO THE SETTINGS FOR THE TIME CLOCK AND WHICH LIGHTING CIRCUITS ARE ON PHOTOCELL CONTROL AND WHICH ARE ON PHOTOCELL CONTROL.
 2. PHOTOCELL OVERRIDES THE TIME CLOCK AND WILL NOT ALLOW ANY LIGHT TO OPERATE DURING DAYLIGHT HOURS.
 3. THIS DETAIL IS DIAGNOSTIC ONLY. THE CIRCUITS LISTED ON THE PANEL SCHEDULES SHALL BE CONTROLLED BY THE TIMECLOCK UNDER PHOTOCELLS. THE CONTRACTOR SHALL PROVIDE THE REQUIRED NUMBER OF PHOTOCELLS, TIMECLOCKS, CONTACTORS, ETC. IN ORDER TO ACHIEVE THE DESIRED LIGHTING CONTROL.

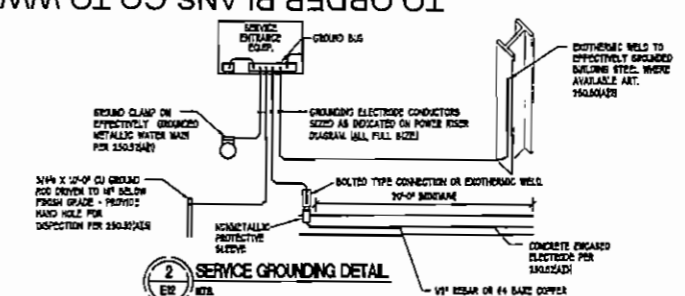
LIGHTING CONTACTORS			
NO.	PHOENIX CIRCUIT VOLTAGE	POLES	CIRCUIT SWITCHES
A	120	AS REQUIRED	REFER TO NOTE 3
B	120	AS REQUIRED	REFER TO NOTE 3



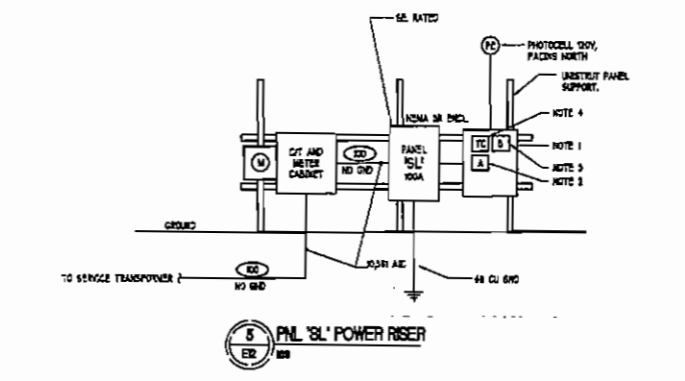
GENERAL FIRE ALARM NOTES:
 1. FIRE ALARM SYSTEM SHALL BE ADDRESSABLE, 24V DC POWER LIMITED, FULLY SUPERVISED, WITH 24 HOUR STANDBY BATTERY. SIMPLER 4000 SYSTEMS OR EQUAL PANEL TO BE NEW-FLOOR MOUNTED. SYSTEM SHALL BE MONITORED BY A UL LISTED MONITORING STATION WHICH IS OPEN 24/7.
 2. FIRE ALARM DEVICES ARE TO BE INSTALLED IN ACCORDANCE WITH NFPA 72 AND VDMA.
 3. ALL FIRE ALARMS WIRING SHALL BE IN CONDUIT.
 4. DEVICE QUANTITIES SHALL BE AS INDICATED ON THE PLANS. VERIFY QUANTITY AND EXACT LOCATION WITH AUTHORITY HAVING JURISDICTION.
 5. PROVIDE TAMPER PROOF COVERS FOR INSTALLATIONS IF REQUIRED BY THE LOCAL AUTHORITY HAVING JURISDICTION. TAMPER PROOF COVERS FOR INSTALLATIONS WITH ADDRESSABLE ALARMS SHALL ONLY BE PROVIDED IF ALLOWED BY THE LOCAL AUTHORITY HAVING JURISDICTION.
 6. DUCT DETECTORS ARE PROVIDED AND WIRED BY E.E. AND INSTALLED, PER CODE BY M.C.
 7. INCLUDE BATTERY CALCULATIONS WITH SHOP DRAWING SUBMITTAL.
 8. THE DUC SHALL RESOLVE TWO PHONE LINES.
 9. DEVICES SHALL BE 3-HEAT TEMPORAL.

FIRE ALARM SYSTEM SCHEDULE		
DEVICE TYPE AND LOCATION		ACTION
1ST FLOOR SMOKE DETECTORS		1
2ND FLOOR SMOKE DETECTORS		1
3RD FLOOR SMOKE DETECTORS		1
4TH FLOOR SMOKE DETECTORS		1
ELEV. MACHINE ROOM AND 1ST FLOOR ELEV. LOSSY SMOKE DETECTORS		1, 2
ELEV. SHAFT, 2ND, 3RD AND 4TH FLOOR ELEV. LOSSY SMOKE DETECTORS		1, 2
ELEV. SHAFT, AND ELEV. MACHINE ROOM HEAT DETECTORS		1, 2
DUCT SMOKE DETECTORS		1
ANY FLOW SWITCH		1
ANY TAMPER SWITCH		2
ANY DEVICE TROUBLE		2

FIRE ALARM ACTION NOTES:
 1. ALARM INPUT SHALL CAUSE RESPECTIVE AIR HANDLERS TO SHUT DOWN.
 2. ELEVATOR SHALL BE RETURNED TO 2ND FLOOR.
 3. ELEVATOR SHALL BE RETURNED TO 1ST FLOOR.
 4. ELEVATOR MOUNT TRIP DEVICE SHALL BE ACTIVATED, AFTER NOTIFICATION FROM ELEVATOR CONTROLLER THAT ELEVATOR HAS REACHED THE APPROPRIATE LEVEL AND THE DOORS ARE OPEN.
 5. TROUBLE SHALL BE REPORTED TO CENTRAL MONITORING STATION AND AN ADDRESSABLE TONE SHALL SOUND AT THE FIRE ALARM CONTROL PANEL AND THE REMOTE ANNUNCIATOR.



GROUNDING DETAIL NOTES:
 GROUNDING ELECTRODES SHALL BE PROVIDED IN ACCORDANCE WITH NEC 250-6.



POWER RISER NOTES:
 1. WEATHERPROOF LOCKABLE CABINET CONTAINING LIGHTING CONTACTORS AND A 7 DAY 24 HOUR TIME CLOCK.
 2. LIGHTING CONTACTOR TYPE 6A PHOTOCELL ON AND OFF'S. REFER TO PANEL SCHEDULES FOR NUMBER OF CIRCUITS CONTROLLED BY THIS SWITCH. PROVIDE ENOUGH CONTACTORS TO CONTROL THESE CIRCUITS AND LEAVE 20% SPARE. COORDINATE WITH PANEL SCHEDULES.
 3. LIGHTING CONTACTOR TYPE 6B PHOTOCELL ON AND TIMECLOCK OFF'S. REFER TO PANEL SCHEDULES FOR NUMBER OF CIRCUITS CONTROLLED BY THIS SWITCH. PROVIDE ENOUGH CONTACTORS TO CONTROL THESE CIRCUITS AND LEAVE 20% SPARE. COORDINATE WITH PANEL SCHEDULES.
 4. TIMECLOCK SHALL BE 24 HOUR, WITH POWER RESERVE 17 DAY, PROGRAMMABLE.

COPPER FEEDER SCHEDULE			
60% FLUE OR 1/2\"/>			
101	1	4 #10, #100	1-1/2"
102	1	4 #8, #100	1-1/2"
103	1	4 #8, #100	1-1/2"
104	1	4 #8, #100	1-1/2"
105	1	4 #8, #100	1-1/2"
106	1	4 #8, #100	1-1/2"
107	1	4 #8, #100	1-1/2"
108	1	4 #8, #100	1-1/2"
109	1	4 #8, #100	1-1/2"
110	1	4 #8, #100	1-1/2"
111	1	4 #8, #100	1-1/2"
112	1	4 #8, #100	1-1/2"
113	1	4 #8, #100	1-1/2"
114	1	4 #8, #100	1-1/2"
115	1	4 #8, #100	1-1/2"
116	1	4 #8, #100	1-1/2"
117	1	4 #8, #100	1-1/2"
118	1	4 #8, #100	1-1/2"
119	1	4 #8, #100	1-1/2"
120	1	4 #8, #100	1-1/2"
121	1	4 #8, #100	1-1/2"
122	1	4 #8, #100	1-1/2"
123	1	4 #8, #100	1-1/2"
124	1	4 #8, #100	1-1/2"
125	1	4 #8, #100	1-1/2"
126	1	4 #8, #100	1-1/2"
127	1	4 #8, #100	1-1/2"
128	1	4 #8, #100	1-1/2"
129	1	4 #8, #100	1-1/2"
130	1	4 #8, #100	1-1/2"
131	1	4 #8, #100	1-1/2"
132	1	4 #8, #100	1-1/2"
133	1	4 #8, #100	1-1/2"
134	1	4 #8, #100	1-1/2"
135	1	4 #8, #100	1-1/2"
136	1	4 #8, #100	1-1/2"
137	1	4 #8, #100	1-1/2"
138	1	4 #8, #100	1-1/2"
139	1	4 #8, #100	1-1/2"
140	1	4 #8, #100	1-1/2"
141	1	4 #8, #100	1-1/2"
142	1	4 #8, #100	1-1/2"
143	1	4 #8, #100	1-1/2"
144	1	4 #8, #100	1-1/2"
145	1	4 #8, #100	1-1/2"
146	1	4 #8, #100	1-1/2"
147	1	4 #8, #100	1-1/2"
148	1	4 #8, #100	1-1/2"
149	1	4 #8, #100	1-1/2"
150	1	4 #8, #100	1-1/2"
151	1	4 #8, #100	1-1/2"
152	1	4 #8, #100	1-1/2"
153	1	4 #8, #100	1-1/2"
154	1	4 #8, #100	1-1/2"
155	1	4 #8, #100	1-1/2"
156	1	4 #8, #100	1-1/2"
157	1	4 #8, #100	1-1/2"
158	1	4 #8, #100	1-1/2"
159	1	4 #8, #100	1-1/2"
160	1	4 #8, #100	1-1/2"

NOTES:
 1. ALL FEEDER SIZES LISTED MAY NOT BE USED IN PROJECT SCHED SCHEDULE.
 2. ELECTRICAL CONTRACTOR TO VERIFY CONDUIT SIZE REQUIRED IF WIRE TYPES OTHER THAN THOSE LISTED ABOVE ARE USED. REFER TO APPLICABLE VERSION OF THE NEC.
 3. IF CONDUIT OTHER THAN EMT IS REQUIRED BASE BID ON NEXT TRADE SIZE ABOVE THAT INDICATED.
 4. FEEDER SIZES SHOWN IN PROJECT RISER WITH A DELTA SYMBOL, Δ, SHALL BE PROVIDED. A NEUTRAL WIRE IS NOT REQUIRED.
 5. #12 CONDUCTS SERVICE ENTRANCE.

ADW
 Architects, p.a.
 ADW Architects, p.a.
 1401 West Morehead Street, Suite 100
 Charlotte, NC 28208
 704.379.1919 Fax 704.379.1920
 www.adwarchitects.com

Ballantyne Commons Storage Facility
dmi
 CHARLOTTE, NC

VP
 VLETIOTIS PAPAS
 Consulting Engineers, PA
 101 N. McDowell St
 Suite 110
 Charlotte, NC 28204
 (704) 372-7755
 (704) 372-7759
 www.vpce.com

ELECTRICAL RISERS AND DETAILS

DATE: 05/09/07 JOB NO: 07031
 REVISIONS:
 NO DATE DESCRIPTION
 05/09/07 FOR PRICING ONLY

PROFESSIONAL SEAL
 077938
E12
 12 of 12 Total

FIRE ALARM SYSTEM MATRIX	BUILDING SYSTEM OUTPUTS	CENTRAL COMM
ACTIVATE COMMON ALARM SIGNAL INDICATOR		
ACTIVATE ADDRESSABLE ALARM SIGNAL		
ACTIVATE COMMON SMOKE/HEAT SIGNAL INDICATOR		
ACTIVATE ADDRESSABLE SMOKE/HEAT SIGNAL		
ACTIVATE COMMON TROUBLE SIGNAL INDICATOR		
ACTIVATE ADDRESSABLE TROUBLE SIGNAL		
ACTIVATE GENERAL EVACUATION SIGNAL		
DISPLAY CHANGE OF STATUS		
ACTIVATE EXTERNAL ANNOUNCEMENTS		
TRANSMIT FIRE ALARM SIGNAL TO CENTRAL STATION		
TRANSMIT TROUBLE SIGNAL TO CENTRAL STATION		
TRANSMIT SUPERVISORY SIGNAL TO CENTRAL STATION		
RETURN ELEVATOR TO 1ST FLOOR		
START TRIP AFTER DELAY REACHES APPROPRIATE FILE SIZE		
SHUT DOWN RESPECTIVE AIR HANDLERS		
SHUT DOWN OF STATUS IN ANNUNCIATOR		
SHUT DOWN OF STATUS IN CONTROL PANEL		
TRANSMIT FIRE ALARM SIGNAL TO CENTRAL STATION		
TRANSMIT SUPERVISORY SIGNAL TO CENTRAL STATION		
TRANSMIT TROUBLE SIGNAL TO CENTRAL STATION		
MANUAL FIRE ALARM PULL BOWLS	X	X
SMOKE DETECTOR	X	X
DUCT SMOKE DETECTOR	X	X
FIRE ALARM A.C. POWER FAILURE	X	X
FIRE ALARM SYSTEM LOW BATTERY	X	X
OFF 4 CONTACT	X	X
SHOKE PANEL	X	X
NOTIFICATION APPLIANCE CIRCUIT SHORT	X	X
SPRINKLER WATER FLOW	X	X
SPRINKLER TAMPERS	X	X
ELEV. 2ND, 3RD & 4TH FLOOR ELEV. LOSSY SMOKE	X	X
ELEV. SHAFT & OPEN FLOOR ELEV. LOSSY SMOKE	X	X
ELEV. SHAFT, AND ELEV. 2ND, 3RD, 4TH FLOOR HEAT	X	X
H2O 3-PRESSURE, SYSTEM	X	X