









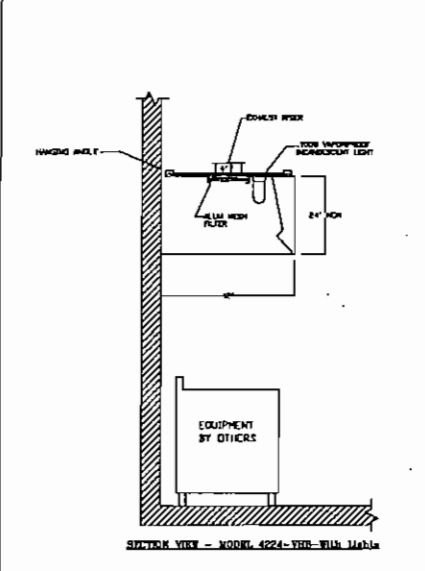
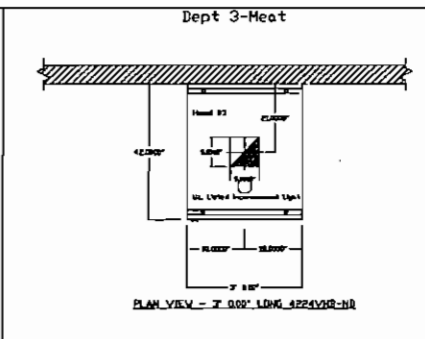
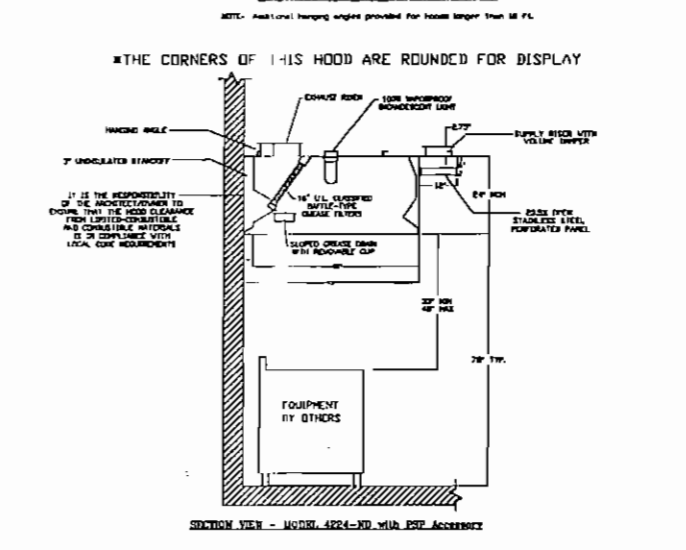
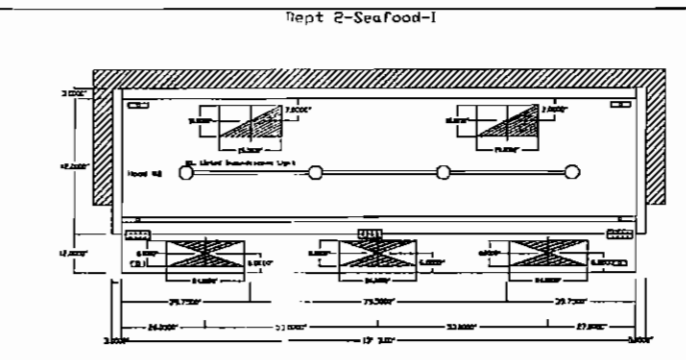
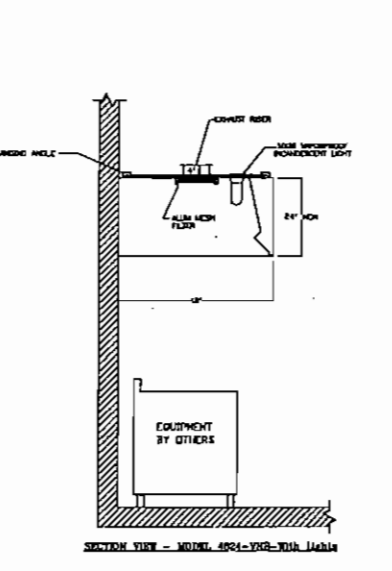
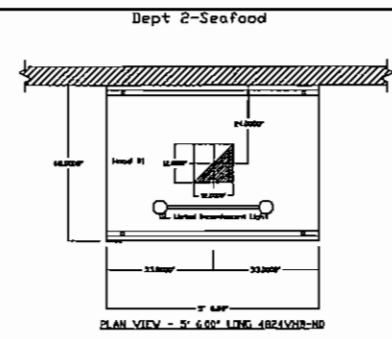


HOOD INFORMATION										
HOOD NO.	MODEL	LENGTH	MAX. CLEARING HEIGHT	EXHAUST FLOW RATE (CFM)	EXHAUST DUCT DIA. (IN)	EXHAUST DUCT LENGTH (FT)	EXHAUST DUCT DIA. (IN)	SUPPLY FLOW RATE (CFM)	HOOD EXHAUSTION TYPE	HOOD EXHAUSTION LOCATION
1	4824	7' 0.00"	70"	300	12"	120'	12"	300	ALDNC	Face Left
2	4824	7' 0.00"	70"	300	12"	120'	12"	300	ALDNC	Face Left
3	4824	7' 0.00"	70"	300	12"	120'	12"	300	ALDNC	Face Left
4	4824	7' 0.00"	70"	300	12"	120'	12"	300	ALDNC	Face Left
5	4824	7' 0.00"	70"	300	12"	120'	12"	300	ALDNC	Face Left
6	4824	7' 0.00"	70"	300	12"	120'	12"	300	ALDNC	Face Left
7	4824	7' 0.00"	70"	300	12"	120'	12"	300	ALDNC	Face Left
8	4824	7' 0.00"	70"	300	12"	120'	12"	300	ALDNC	Face Left
9	4824	7' 0.00"	70"	300	12"	120'	12"	300	ALDNC	Face Left
10	4824	7' 0.00"	70"	300	12"	120'	12"	300	ALDNC	Face Left
11	4824	7' 0.00"	70"	300	12"	120'	12"	300	ALDNC	Face Left

HOOD INFORMATION										
HOOD NO.	TYPE	HEIGHT	LENGTH	WIDTH	DEPTH	LOCATION	TYPE	TYPE	TYPE	TYPE
1	Aluminum Mesh	12"	12"	12"	12"	Incandescent Light	NO	Left	Alum Mesh	24" x 24"
2	Aluminum Mesh	12"	12"	12"	12"	Incandescent Light	NO	Left	Alum Mesh	24" x 24"
3	Aluminum Mesh	12"	12"	12"	12"	Incandescent Light	NO	Left	Alum Mesh	24" x 24"
4	Aluminum Mesh	12"	12"	12"	12"	Incandescent Light	NO	Left	Alum Mesh	24" x 24"
5	Aluminum Mesh	12"	12"	12"	12"	Incandescent Light	NO	Left	Alum Mesh	24" x 24"
6	Aluminum Mesh	12"	12"	12"	12"	Incandescent Light	NO	Left	Alum Mesh	24" x 24"
7	Aluminum Mesh	12"	12"	12"	12"	Incandescent Light	NO	Left	Alum Mesh	24" x 24"
8	Aluminum Mesh	12"	12"	12"	12"	Incandescent Light	NO	Left	Alum Mesh	24" x 24"
9	Aluminum Mesh	12"	12"	12"	12"	Incandescent Light	NO	Left	Alum Mesh	24" x 24"
10	Aluminum Mesh	12"	12"	12"	12"	Incandescent Light	NO	Left	Alum Mesh	24" x 24"
11	Aluminum Mesh	12"	12"	12"	12"	Incandescent Light	NO	Left	Alum Mesh	24" x 24"

PERFORATED SUPPLY PLENUM(S)									
PLENUM NO.	MODEL	LENGTH	WIDTH	DEPTH	HEIGHT	TYPE	TYPE	TYPE	TYPE
1	4824	7' 0.00"	70"	300	12"	ALDNC	Face Left	Face Left	Face Left
2	4824	7' 0.00"	70"	300	12"	ALDNC	Face Left	Face Left	Face Left
3	4824	7' 0.00"	70"	300	12"	ALDNC	Face Left	Face Left	Face Left
4	4824	7' 0.00"	70"	300	12"	ALDNC	Face Left	Face Left	Face Left
5	4824	7' 0.00"	70"	300	12"	ALDNC	Face Left	Face Left	Face Left
6	4824	7' 0.00"	70"	300	12"	ALDNC	Face Left	Face Left	Face Left
7	4824	7' 0.00"	70"	300	12"	ALDNC	Face Left	Face Left	Face Left
8	4824	7' 0.00"	70"	300	12"	ALDNC	Face Left	Face Left	Face Left
9	4824	7' 0.00"	70"	300	12"	ALDNC	Face Left	Face Left	Face Left
10	4824	7' 0.00"	70"	300	12"	ALDNC	Face Left	Face Left	Face Left
11	4824	7' 0.00"	70"	300	12"	ALDNC	Face Left	Face Left	Face Left

HOOD OPTIONS									
HOOD NO.	OPTION	DESCRIPTION	TYPE	TYPE	TYPE	TYPE	TYPE	TYPE	TYPE
1	1	12" x 12" x 12" x 12"	NO	NO	NO	NO	NO	NO	NO
2	2	12" x 12" x 12" x 12"	NO	NO	NO	NO	NO	NO	NO
3	3	12" x 12" x 12" x 12"	NO	NO	NO	NO	NO	NO	NO
4	4	12" x 12" x 12" x 12"	NO	NO	NO	NO	NO	NO	NO
5	5	12" x 12" x 12" x 12"	NO	NO	NO	NO	NO	NO	NO
6	6	12" x 12" x 12" x 12"	NO	NO	NO	NO	NO	NO	NO
7	7	12" x 12" x 12" x 12"	NO	NO	NO	NO	NO	NO	NO
8	8	12" x 12" x 12" x 12"	NO	NO	NO	NO	NO	NO	NO
9	9	12" x 12" x 12" x 12"	NO	NO	NO	NO	NO	NO	NO
10	10	12" x 12" x 12" x 12"	NO	NO	NO	NO	NO	NO	NO
11	11	12" x 12" x 12" x 12"	NO	NO	NO	NO	NO	NO	NO



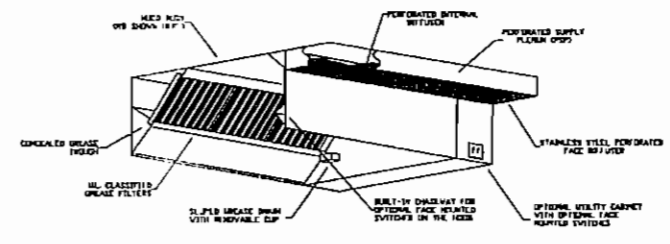
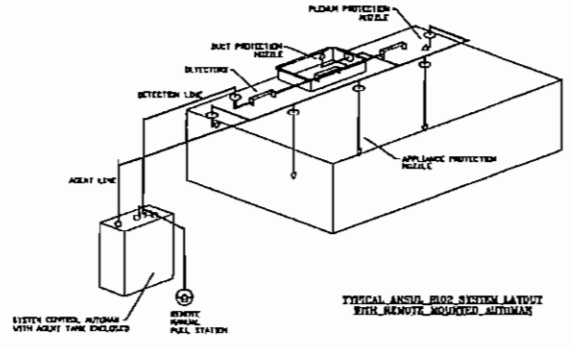
GENERIC

SPECIFICATIONS

THE RESTAURANT FINE SUPPLEMENTATION SYSTEM SHALL BE THE PRE-ENGINEERED 1/2" WIRE MESH RELEASER DISTRIBUTION NETWORK. IT SHALL BE LISTED WITH UNDERWRITERS LABORATORIES, INC. (UL).

THE SYSTEM SHALL BE CAPABLE OF AUTOMATIC DETECTION AND ACTIVATION WITH LOCAL OR REMOTE MANUAL ACTUATION. RELEASERS SHALL BE AVAILABLE FOR MECHANICAL OR ELECTRICAL GAS LINE SHUT-OFF APPLICATIONS.

THE EXTINGUISHING AGENT SHALL BE A REGULATED CARBONIC DIOXIDE (CO2) RELEASED THROUGH A REGULATED RELEASE HEAD WITH A FUSION-LINK DETECTOR SYSTEM. THE FUSION-LINK SHALL BE SELECTED AND INSTALLED ACCORDING TO THE OPERATING TEMPERATURE IN THE WORKING AREA. THE FUSION-LINK SHALL BE SUPPLIED BY A FUSION-LINK DETECTOR ASSEMBLY.



CUSTOMER APPROVAL TO MANUFACTURE

Approved as Shown

Approved with Engineering Changes

Approved with Material Changes

Approved with Design Changes

Date: \_\_\_\_\_ By: \_\_\_\_\_



JOB	WHOLE FOODS
LOCATION	NASHVILLE, TN
DATE	2/25/2008
BY	JDH
SCALE	AS SHOWN

SHEET 1

CONTRACTOR'S RESPONSIBILITY  
The Contractor shall be responsible for the proper installation and operation of the hood system. The Contractor shall ensure that the hood system is installed in accordance with the manufacturer's instructions and all applicable codes and regulations.

NO.	DESCRIPTION
1	12" x 12" x 12" x 12"
2	12" x 12" x 12" x 12"
3	12" x 12" x 12" x 12"
4	12" x 12" x 12" x 12"
5	12" x 12" x 12" x 12"
6	12" x 12" x 12" x 12"
7	12" x 12" x 12" x 12"
8	12" x 12" x 12" x 12"
9	12" x 12" x 12" x 12"
10	12" x 12" x 12" x 12"
11	12" x 12" x 12" x 12"

PROFESSIONAL SEAL

DESIGNED BY	DATE
CHECKED BY	DATE
APPROVED BY	DATE
PROJECT NAME	

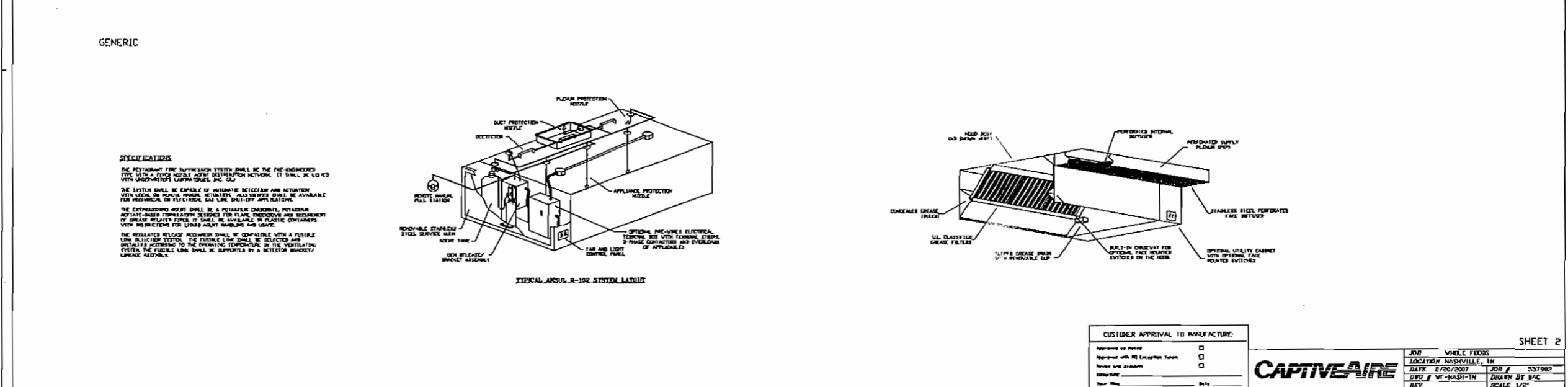
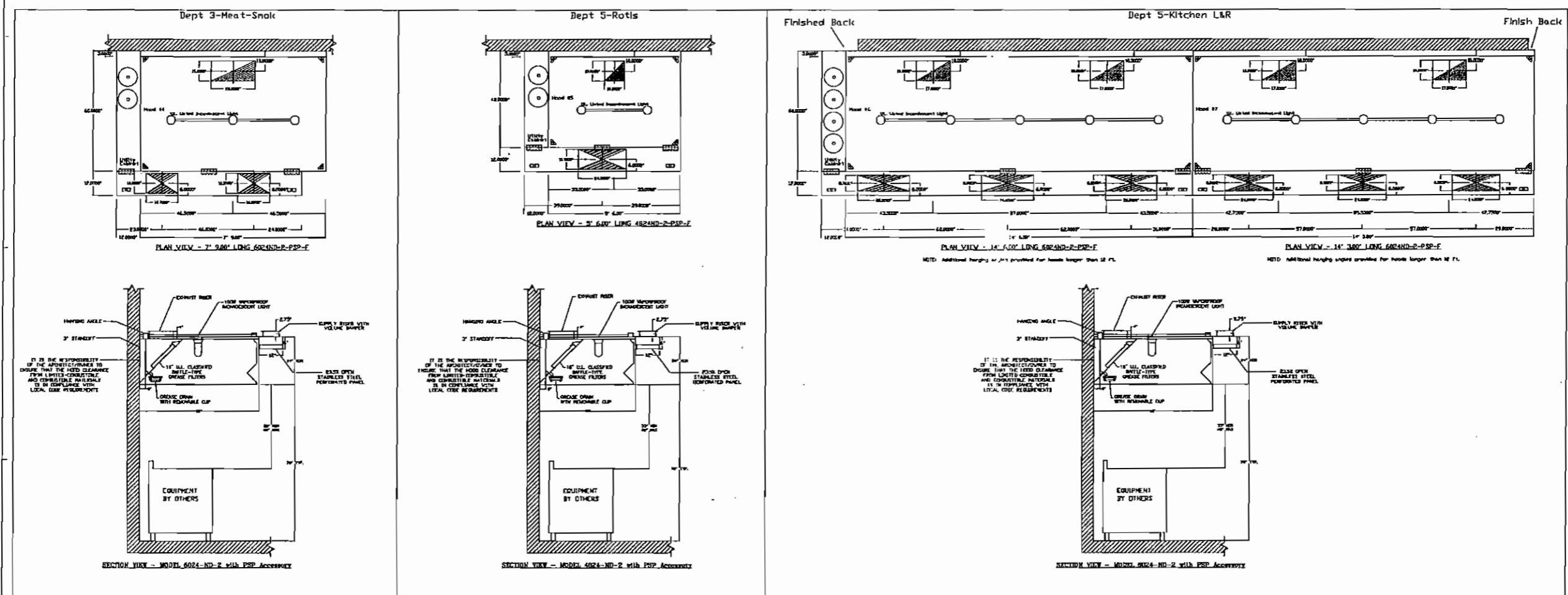
NASHVILLE  
TENNESSEE  
MILL CENTER



PROJECT NUMBER  
20080458  
SHEET TITLE

MECHANICAL  
DETAILS

DATE REVISION  
M4.1



**PROFESSIONAL SEAL**

DATE: \_\_\_\_\_  
 SCALE: \_\_\_\_\_  
 SHEET: \_\_\_\_\_

PROFESSIONAL OR ENGINEER  
 GARY LEROY  
 PROJECT MANAGER  
 GARY LEROY  
 QUALITY CONTROL  
 GARY LEROY  
 DESIGNER  
 GARY LEROY  
 PROJECT ENGINEER

**NASHVILLE**  
**TENNESSEE**  
**HILL CENTER**



SHEET 2

PROJECT NUMBER: 20050458  
 SHEET TITLE:

**MECHANICAL DETAILS**

SHEET NUMBER: **M4.2**

TO ORDER PLANS GO TO WWW.LDIREPRO.COM



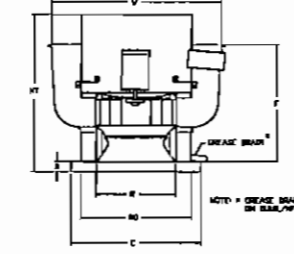
FAN INFORMATION																		
FAN UNIT #	FAN UNIT MODEL #	CONVERT FAN						SUPPLY FAN										
		MODEL	TAG	CFM	SP. HP	HP	#	VOLT	FLA	BLOWER	LOADING	TAG	CFM	SP. HP	HP	#	VOLT	FLA
1	BL05FA	BL05FA	998	0.388	3573	0.388	1	115	4.3									
2	BL05FA	BL05FA	998	0.388	3573	0.388	1	115	4.3									
3	BL05FA	BL05FA	998	0.388	3573	0.388	1	115	4.3									
4	BL05FA	BL05FA	998	0.388	3573	0.388	1	115	4.3									
5	BL05FA	BL05FA	998	0.388	3573	0.388	1	115	4.3									
6	BL05FA	BL05FA	998	0.388	3573	0.388	1	115	4.3									
7	BL05FA	BL05FA	998	0.388	3573	0.388	1	115	4.3									
8	BL05FA	BL05FA	998	0.388	3573	0.388	1	115	4.3									
9	BL05FA	BL05FA	998	0.388	3573	0.388	1	115	4.3									
10	BL05FA	BL05FA	998	0.388	3573	0.388	1	115	4.3									
11	BL05FA	BL05FA	998	0.388	3573	0.388	1	115	4.3									
12	BL05FA	BL05FA	998	0.388	3573	0.388	1	115	4.3									
13	BL05FA	BL05FA	998	0.388	3573	0.388	1	115	4.3									
14	BL05FA	BL05FA	998	0.388	3573	0.388	1	115	4.3									

FAN OPTIONS	
1	1 - Grease Box
2	1 - Reinforced Backdraft Damper for AHJ Listing
3	1 - Grease Box
4	1 - Reinforced Backdraft Damper for AHJ Listing
5	1 - Grease Box
6	1 - Reinforced Backdraft Damper for AHJ Listing
7	1 - Grease Box
8	1 - Reinforced Backdraft Damper for AHJ Listing
9	1 - Grease Box
10	1 - Reinforced Backdraft Damper for AHJ Listing
11	1 - Grease Box
12	1 - Reinforced Backdraft Damper for AHJ Listing
13	1 - Grease Box
14	1 - Reinforced Backdraft Damper for AHJ Listing
15	1 - Grease Box
16	1 - Grease Box

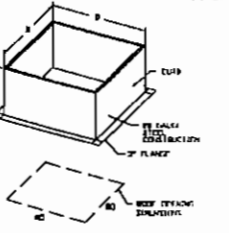
GAS FIRED MAKE-UP AIR UNITS			
FAN UNIT #	BTU/H	TEMP. RISE	SIZE TYPE
1	120000	25 deg F	Natural
2	120000	25 deg F	Natural
3	120000	25 deg F	Natural
4	120000	25 deg F	Natural
5	120000	25 deg F	Natural
6	120000	25 deg F	Natural
7	120000	25 deg F	Natural
8	120000	25 deg F	Natural
9	120000	25 deg F	Natural
10	120000	25 deg F	Natural
11	120000	25 deg F	Natural
12	120000	25 deg F	Natural
13	120000	25 deg F	Natural
14	120000	25 deg F	Natural

CURTAIN ASSAMBLIES		
NO. / UNIT	SIZE	TYPE
1 / 1	15.000" x 15.000" x 15.000"	Ventilated
2 / 1	15.000" x 15.000" x 15.000"	Ventilated Hinged
3 / 1	15.000" x 15.000" x 15.000"	Insulated
4 / 1	15.000" x 15.000" x 15.000"	Ventilated
5 / 1	15.000" x 15.000" x 15.000"	Ventilated Hinged
6 / 1	15.000" x 15.000" x 15.000"	Insulated
7 / 1	15.000" x 15.000" x 15.000"	Ventilated Hinged
8 / 1	15.000" x 15.000" x 15.000"	Insulated
9 / 1	15.000" x 15.000" x 15.000"	Ventilated Hinged
10 / 1	15.000" x 15.000" x 15.000"	Ventilated Hinged
11 / 1	15.000" x 15.000" x 15.000"	Insulated
12 / 1	15.000" x 15.000" x 15.000"	Ventilated Hinged
13 / 1	15.000" x 15.000" x 15.000"	Ventilated Hinged
14 / 1	15.000" x 15.000" x 15.000"	Insulated
15 / 1	15.000" x 15.000" x 15.000"	Ventilated Hinged
16 / 1	15.000" x 15.000" x 15.000"	Ventilated Hinged
17 / 1	15.000" x 15.000" x 15.000"	Ventilated

**DURFA SERIES UPRAST EXHAUST FANS (UL200)**



- FEATURES:**
- REEF HEATED FAN
  - UL200
  - VARIABLE SPEED CONTROL
  - INTERNAL VIBRATION
  - WEATHERPROOF BEZELCONNECT
  - THERMAL OVERLOAD PROTECTION (LONGLE PHAS)



**DURFA DIRECT DRIVE CENTRIFUGAL UP-BLAST EXHAUST FANS DIMENSIONAL DATA**

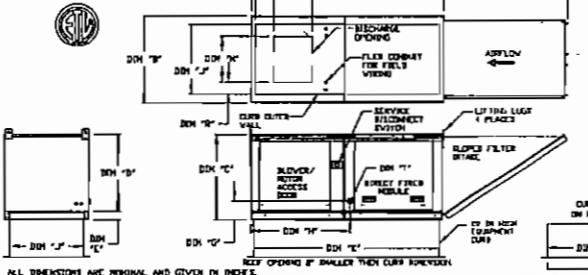
FAN MODEL	HT	V	B	C	F	S	BD	WEIGHT LB
BL05FA	23 1/4"	23 1/2"	2"	23 1/4"	23 1/2"	16 1/2"	16 1/2"	28
BL05FA	27 1/4"	28 1/2"	2"	27 1/4"	28 1/2"	20 1/4"	20 1/4"	30

**CURTAIN DIMENSIONAL DATA**

FAN MODEL	B	C	E
BL05FA	19 1/2"	16"	16"
BL05FA	19 1/2"	16"	16"

FAN UNIT # = 1,4,12,17

**MODULAR OUTDOOR DOWN DISCHARGE DIRECT FIRED HEATER**

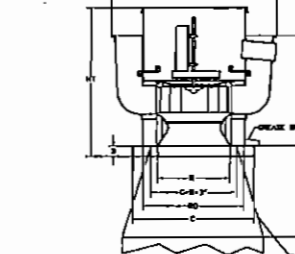


**ALL DIMENSIONS ARE NOMINAL AND GIVEN IN INCHES**

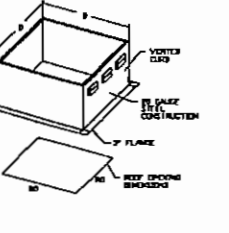
NO.	DESCRIPTION	HT	WT	CFM	TEMP. RISE	TYPE
1	120000	25	1200	120000	25	Natural
2	120000	25	1200	120000	25	Natural
3	120000	25	1200	120000	25	Natural
4	120000	25	1200	120000	25	Natural
5	120000	25	1200	120000	25	Natural
6	120000	25	1200	120000	25	Natural
7	120000	25	1200	120000	25	Natural
8	120000	25	1200	120000	25	Natural
9	120000	25	1200	120000	25	Natural
10	120000	25	1200	120000	25	Natural
11	120000	25	1200	120000	25	Natural
12	120000	25	1200	120000	25	Natural
13	120000	25	1200	120000	25	Natural
14	120000	25	1200	120000	25	Natural

FAN UNIT # = 3,6,9,11,14

**MOVA SERIES UPRAST EXHAUST FANS (UL702)**



- FEATURES:**
- REEF HEATED FAN
  - UL702
  - VARIABLE SPEED CONTROL
  - INTERNAL VIBRATION
  - WEATHERPROOF BEZELCONNECT
  - THERMAL OVERLOAD PROTECTION (LONGLE PHAS)
  - GREASE CLASSIFICATION TESTING



**MOVA DIRECT DRIVE CENTRIFUGAL UP-BLAST EXHAUST FANS DIMENSIONAL DATA**

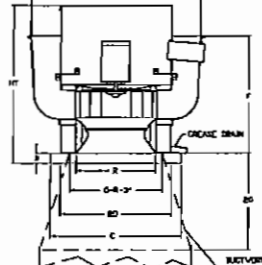
FAN MODEL	HT	V	B	C	F	S	BD	WEIGHT LB
BL05FA	26 1/2"	26 3/4"	2"	26 1/2"	26 3/4"	14 1/2"	14 1/2"	18
BL05FA	30 1/2"	30 3/4"	2"	30 1/2"	30 3/4"	16 1/2"	16 1/2"	20
BL05FA	34 1/2"	34 3/4"	2"	34 1/2"	34 3/4"	18 1/2"	18 1/2"	22
BL05FA	38 1/2"	38 3/4"	2"	38 1/2"	38 3/4"	20 1/2"	20 1/2"	24

**CURTAIN DIMENSIONAL DATA**

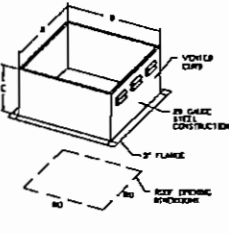
FAN MODEL	B	C	E
BL05FA	22 1/2"	18"	18"
BL05FA	22 1/2"	18"	18"
BL05FA	22 1/2"	18"	18"
BL05FA	22 1/2"	18"	18"

FAN UNIT # = 2,5,7,9,10,13

**DURFA SERIES UPRAST EXHAUST FANS (UL202)**



- FEATURES:**
- REEF HEATED FAN
  - UL202
  - VARIABLE SPEED CONTROL
  - INTERNAL VIBRATION
  - WEATHERPROOF BEZELCONNECT
  - THERMAL OVERLOAD PROTECTION (LONGLE PHAS)
  - GREASE CLASSIFICATION TESTING



**DURFA DIRECT DRIVE CENTRIFUGAL UP-BLAST EXHAUST FANS DIMENSIONAL DATA**

FAN MODEL	HT	V	B	C	F	S	BD	WEIGHT LB
BL05FA	27 1/4"	28 1/2"	2"	27 1/4"	28 1/2"	18 1/4"	18 1/4"	30

**CURTAIN DIMENSIONAL DATA**

FAN MODEL	B	C	E
BL05FA	19 1/2"	16"	16"

FAN UNIT # = 15,16

**CUSTOMER APPROVAL TO MANUFACTURE**

Approved as Shown

Approved with Exception

Noted and Rebuilt

Date: \_\_\_\_\_



SHEET 4

JOB: WHOLE FOODS  
 LOCATION: NASHVILLE, TN  
 DATE: 7/2/2007 JOB: 551982  
 DWG: V-NASH-IN DRAWN BY: BAC  
 RBY: SCALE: 1/2"

**PROFESSIONAL SEAL**

PROFESSIONAL IN CHARGE  
 DANA LLOYD  
 PROJECT MANAGER  
 ONLY WOLFE  
 CHECKED BY  
 DANA LLOYD  
 DRAWN BY  
 ONLY WOLFE

PROJECT NAME

NASHVILLE  
 TENNESSEE  
 HILL CENTER



PROJECT NUMBER  
 20050458

MECHANICAL  
 DETAILS

DATE REVISION  
**M4.4**

