



PROTECTION CRITERIA BASED ON 2007 NFPA 13

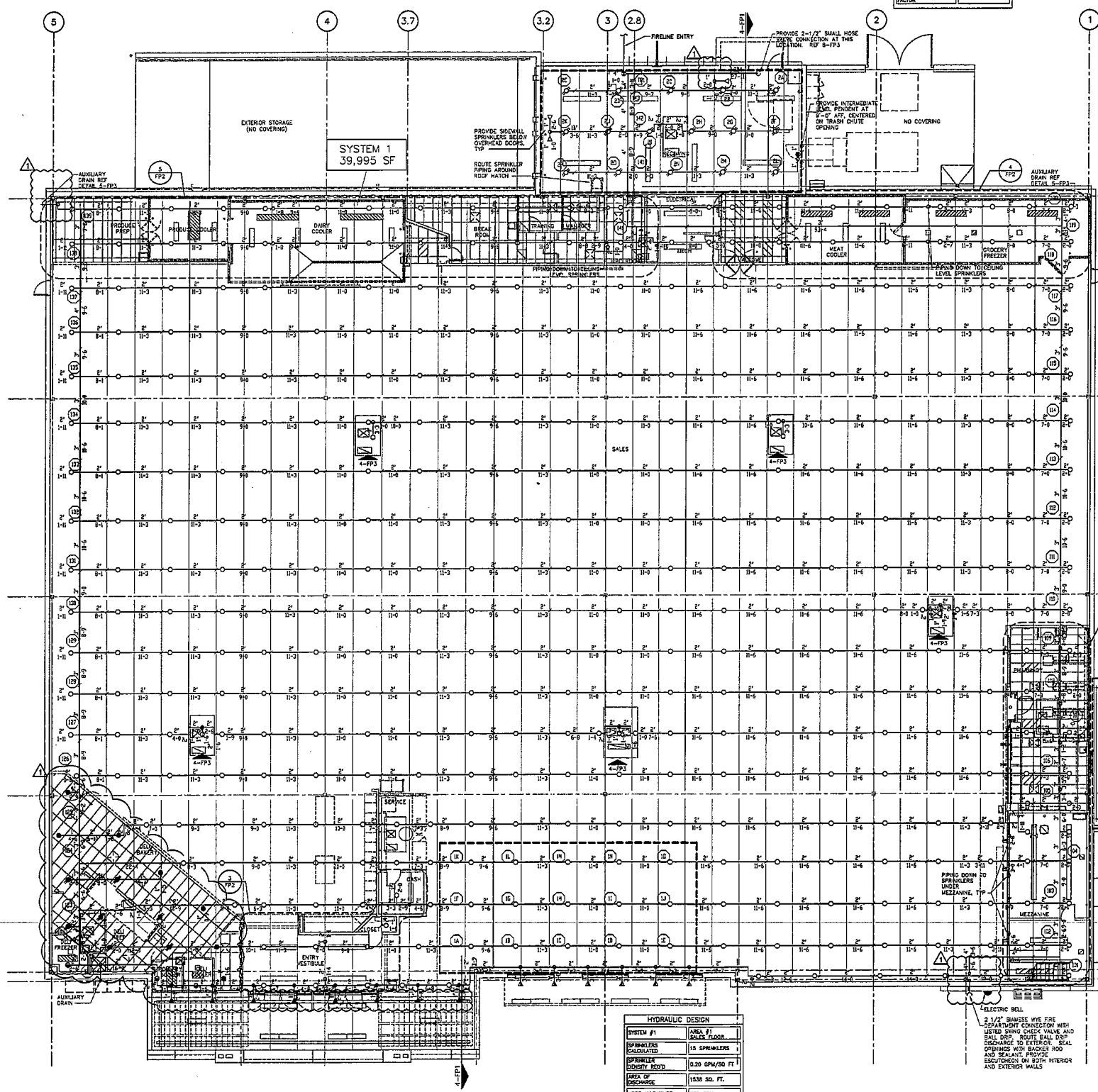
OCCUPANCY CLASSIFICATION	DENSITY	HOSE ALLOWANCE (GPM)	MAXIMUM SPRINKLER SPACING (SQ FT)	DESIGN BASIS
SALES FLOOR (MISCELLANEOUS STORAGE)	0.20/1500 SQ FT	250	130	CLASS I-IV ON SHELF TO 12'-0"; 13: TABLE 13.2.1; OWNER-ELECTED DENSITY
TENANT SPACE/DELI/PHARMACY/OFFICES (MISCELLANEOUS STORAGE)	0.20/1500 SQ FT	250	130	CLASS I-IV TO 5'-0"; 13: TABLE 13.2.1
STOCK ROOM/RECEIVING AREA (RACK STORAGE)	0.24/ENTIRE AREA	500	100	CLASS I-IV TO 15'-0"; NONENCAPSULATED, CEILING SPRINKLERS ONLY, 13: FIGURE 16.2.1.3.2(G) CURVE E, FIGURE 16.2.1.3.4.1, 8 FT AISLES, HIGH TEMP SPRINKLERS
RESTROOMS/BREAKROOMS (LIGHT HAZARD)	0.10/1500 SQ FT	100	225	LIGHT HAZARD, 13: 11.2.3.1.1 AND TABLE 11.2.3.1.2
ENTRY VESTIBLES (ORDINARY HAZARD GROUP 2)	0.20/ENTIRE AREA	250	130	ORDINARY HAZARD GROUP 2 (NO STORAGE), 13: 11.2.3.1.1 AND TABLE 11.2.3.1.2
COOLERS/FREEZERS (MISCELLANEOUS STORAGE)	0.20/ENTIRE AREA	250	130	CLASS I-III TO 12'-0" ON SINGLE ROW RACK, 13: TABLE 13.2.1

HYDRAULIC DESIGN	
SYSTEM #1	AREA #1
SPRINKLER	16 SPRINKLERS
SPRINKLER DENSITY	0.24 GPM/SQ FT
AREA OF DISCHARGE	ENTIRE AREA
HOSE ALLOWANCE	250 GPM
SYSTEM FLOW DEMAND	320.8 GPM
SYSTEM PRESSURE DEMAND	108.8 PSI
SYSTEM SAFETY FACTOR	1.1

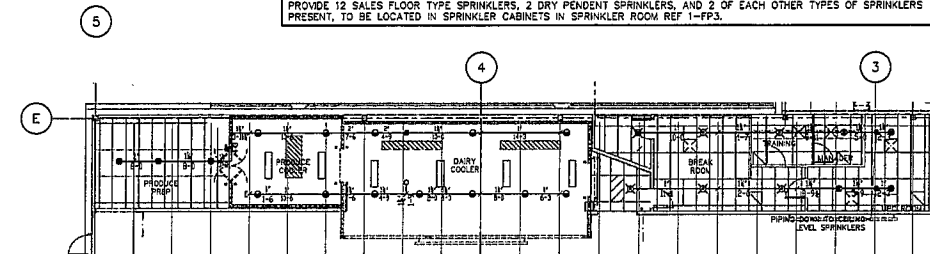
SPRINKLER SYMBOL LEGEND

SYMBOL	SIZE	MFR	MARK	S.L.N.	FINISH	STYLE	TEMP	K-FACTOR	TOTAL	TOTAL SPRINKLERS REQUIRED	SYMBOL DESCRIPTION
○	3/4"	TYCO	TY-B	TY4151	BRASS	UPRIGHT	200	8.0	395	○	HYDRAULIC REFERENCE NODE POINT
⊙	3/4"	TYCO	TY-B	TY4151	BRASS	UPRIGHT	285	8.0	16	⊙	CAP
●	1/2"	TYCO	TY-FRB	TY3231	WHITE	PENDENT STYLE 10	175	5.5	11	●	RISER NIPPLE/DROP NIPPLE
⊙	1/2"	TYCO	TY-FRB	TY3231	WHITE	PENDENT ESC 401	175	5.5	17	⊙	SPRINKLER RISER
⊙	1/2"	TYCO	TY-FRB	TY3231	WHITE	PENDENT STYLE 10	155	5.5	7	⊙	INSPECTOR'S TEST/AUXILIARY DRAIN
⊙	1/2"	TYCO	TY-FRB	TY3231	WHITE	PENDENT ESC 401	155	5.5	6	⊙	HANGER
⊙	1"	TYCO	DS-C	TY3355	WHITE	CONCEAL	200	5.5	28	⊙	TRAPEZE HANGER PARALLEL TO JOIST
⊙	1/2"	TYCO	TY-B	TY3351	CHROME	HSW	200	5.5	3	⊙	
⊙	1"	TYCO	DS-1	TY3359	WHITE	HSW	285	5.5	8	⊙	
⊙	1"	TYCO	DS-3	TY3359	WHITE	HSW	200	11.2	8	⊙	

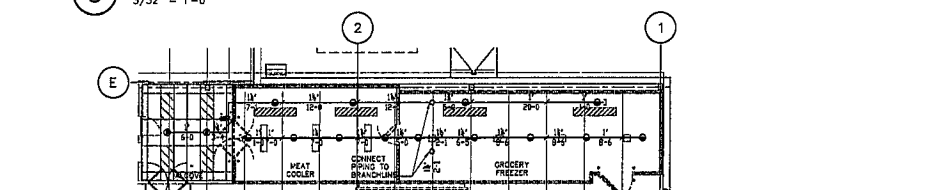
CONTRACTOR MAY SUBSTITUTE SPRINKLERS OF SAME SIZE, K-FACTOR AND TEMPERATURE CLASSIFICATION UNLESS PROHIBITED BY THE SPECIFICATIONS.  
 PROVIDE 12 SALES FLOOR TYPE SPRINKLERS, 2 DRY PENDENT SPRINKLERS, AND 2 OF EACH OTHER TYPES OF SPRINKLERS PRESENT, TO BE LOCATED IN SPRINKLER CABINETS IN SPRINKLER ROOM REF 1-PP3.



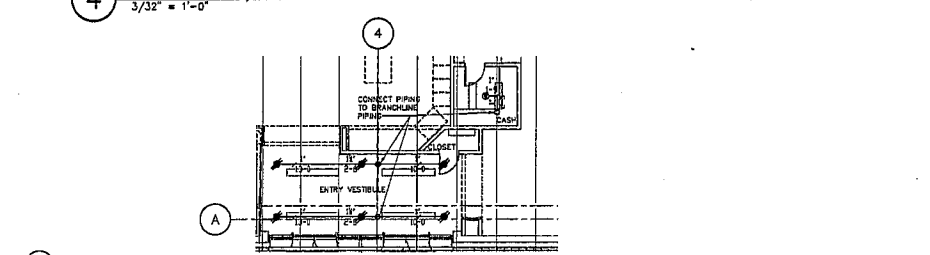
1 FIRE SPRINKLER PLAN  
 3/32" = 1'-0"



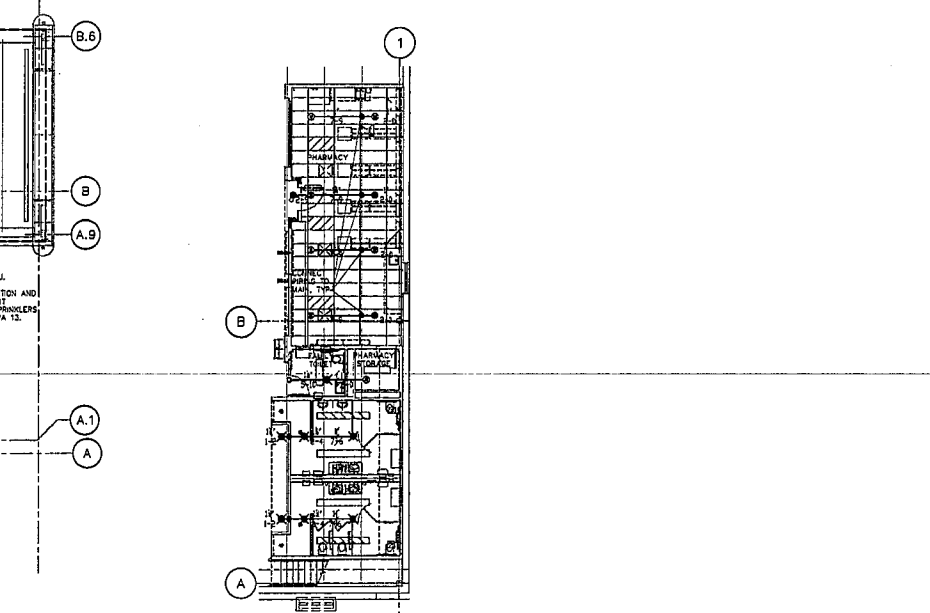
5 PRODUCE PREP/COOLER/OFFICES SPRINKLER PLAN  
 3/32" = 1'-0"



4 FREEZER/COOLER SPRINKLER PLAN  
 3/32" = 1'-0"



3 ENTRY VESTIBULE/CASH SPRINKLER PLAN  
 3/32" = 1'-0"



2 PHARMACY/RESTROOMS SPRINKLER PLAN  
 3/32" = 1'-0"

CONSULTANTS:  
**HENDERSON ENGINEERS**  
 CONSULTING ENGINEERS  
 11117 100th Ave NE, Suite 100  
 Redmond, WA 98073  
 Phone: 206-881-8888  
 Fax: 206-881-8889

WAL-MART  
 NEIGHBORHOOD MARKET  
 MOBILE (HILLCREST), AL  
 STORE NO. 4657  
 JOB NUMBER: 98124202 PART: 319

ISSUE BLOCK	
Δ	09/10/07 REV #2

CHECKED BY:	JMK
DRAWN BY:	JMK
FILE NAME:	FP2
PROJ CYCLE:	042707
DOCUMENT DATE:	071807

BID SET.  
 NOT FOR CONSTRUCTION.

OVERALL FIRE SPRINKLER PLAN

SHEET:  
 FP2

