

NOTE: ROUTE EXISTING WALL HUNG UNIT CONDENSATE DRAINS ON ADJACENT EXISTING WING TO NEW UNDERGROUND DRAINAGE SYSTEM. REFER TO CIVIL DRAWINGS

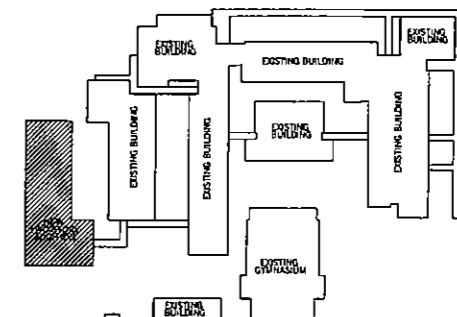
KEYED NOTES - THIS SHEET ONLY

- 1. INSTALL LOWER 8" x 8" RETURN AIR F.A. COORDINATE WITH BLOCK CORPUS AND STRUCTURE.
- 2. INSTALL FACTORY PROVIDED BRCA UNIT WITH BOTTOM 8" x 8" F.A. COORDINATE WITH BLOCK CORPUS, COORDINATE SIZE OF VENT WITH FAN PROVIDED.
- 3. STUD DUCT FULL SIZE OF FAN OUTLET INTO PLUMBING ON BACK OF WALL OUTLET.
- 4. INSTALL TYPE "SM" RETURN GRILLE WITH BOTTOM 10" x 10" F.A. COORDINATE WITH HEIGHT OF CEILING IN ADJACENT SPACE.
- 5. TRANSITION FROM FULL SIZE OF FAN OUTLET TO SIZE OF BRCA UNIT.
- 6. MECHANICAL EQUIPMENT PAD - SEE ARCHITECTURAL DOCUMENTS REQUIRED EVEN IF UNIT IS LOCATED IN SET OR CONCRETE PAVING SO THAT IT CAN BE LEVEL. PAD SHALL EXTEND TO THE OUTSIDE WALL OF THE BUILDING.
- 7. INSTALL MAINS AS HIGH AS POSSIBLE ON WALL BUT BELOW CEILING. ROUTE 3/4" CONDENSATE DRAIN IN BACK ALONG WITH AIR RESISTANT LINER THROUGH WALL AND CONNECT TO UNDERGROUND NON-PRESSURIZED DRAINAGE PIPING. SECURE TO WALL AND PAINT TO MATCH SEE PLUMBING DOCUMENTS. INSTALL CONDENSATE DRAIN LINE PER SPECIFICATION SECTION 15350.
- 8. HEAT T RACK AND LEGS. PROVIDE PROGRAM PIPING TO MECHANICAL EQUIPMENT PAD INSIDE THROUGH EXTERIOR WALL WITH A STEEL WALL FLANGE. BACK FILL REMAINING SPACE IN BAY WITH SLOTTED CALK. ROUTE PIPES UP BYTROUGH FACE OF WALL TO A POINT ABOVE CEILING LINE AND SET UP PER DETAIL IN THE MIDDLE OF EACH BAY TO INSURE ON. CONDENSATE PIPING, HANGERS AND SLOTTED CALK REQUIRED. PIPE IS TO BE INSULATED PRIOR TO INSTALLATION OF CLAMPS AND SUPPORTS. PROVIDE LEGS AND HANGERS AS REQUIRED. PROVIDE PENETRATIONS IN FLOOR AREA. WEATHER-PROOF PENETRATION WITH THE GRADE OF AREA TO BE AVOIDED OR REINFORCED.
- 9. ROUTE 3/4" CONDENSATE DRAIN RESISTANT DUCT THROUGH FLOOR SLAB INTO CHASE ON UPPER FLOOR AND THROUGH ROOF TO BUILT UP EXHAUST FAN. SET ARCHITECTURAL DOCUMENTS FOR ROOF AND DUCT PENETRATION DETAILS. PAINT EXPOSED DUCT TO MATCH WALL SEE PLUMBING DOCUMENTS. PROVIDE FINE GAPS IN FLOOR PENETRATIONS.
- 10. INSTALL MAINS AS HIGH AS POSSIBLE ON WALL BUT BELOW CEILING. ROUTE 3/4" CONDENSATE DRAIN LINE DOWN EXTERIOR WALL AND TURN DOWN OVER FLOOR DRAIN IN CHASE. SECURE TO WALL AND PAINT TO MATCH SEE PLUMBING DOCUMENTS. INSTALL CONDENSATE DRAIN LINE PER SPECIFICATION SECTION 15350.
- 11. INSTALL MAINS AS HIGH AS POSSIBLE ON WALL BUT BELOW CEILING. ROUTE 3/4" CONDENSATE DRAIN LINE DOWN EXTERIOR WALL AND TURN DOWN OVER FLOOR DRAIN IN CHASE. SECURE TO WALL AND PAINT TO MATCH SEE PLUMBING DOCUMENTS. INSTALL CONDENSATE DRAIN LINE PER SPECIFICATION SECTION 15350.

GENERAL CONSTRUCTION NOTES:

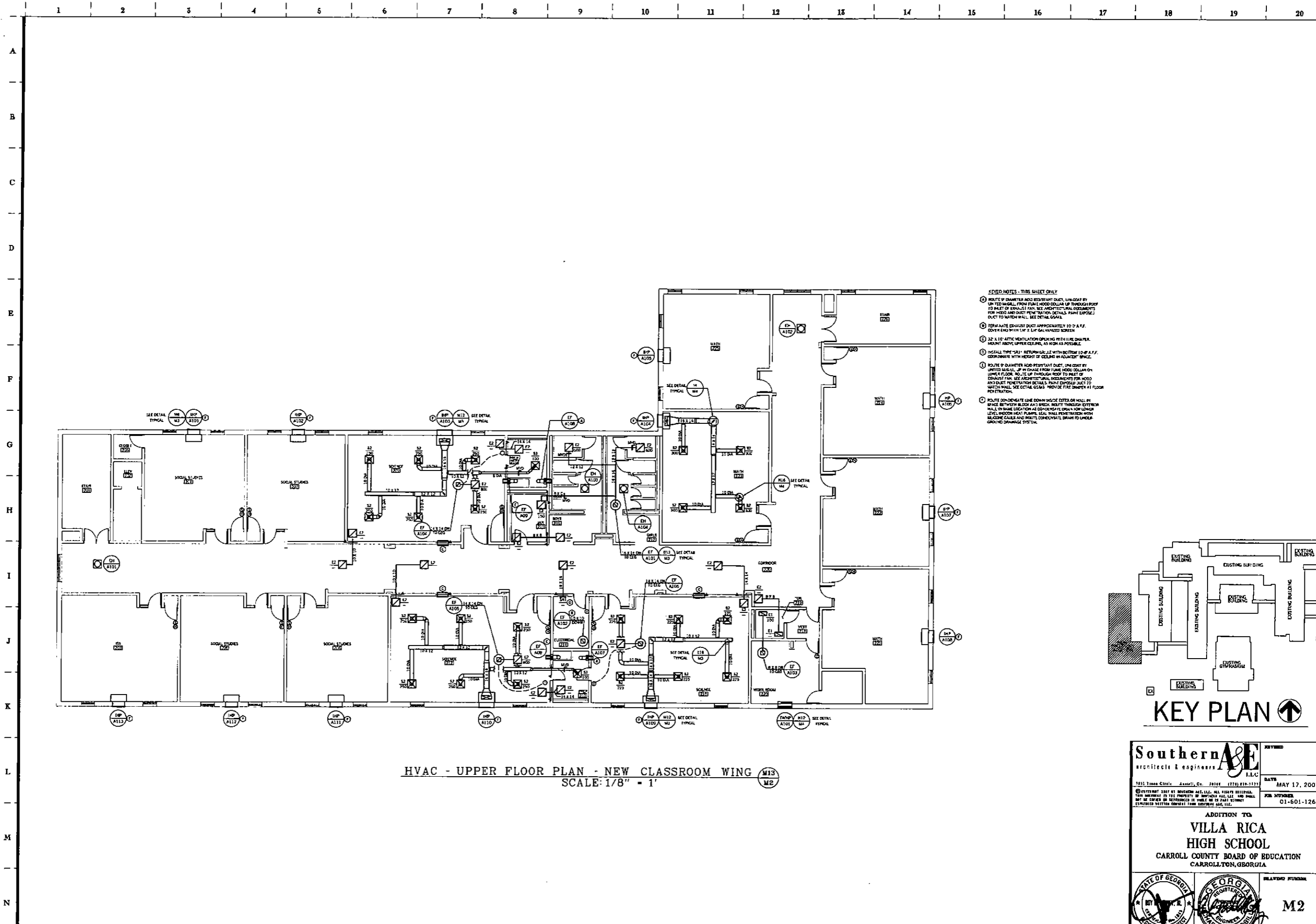
- 1. THESE DRAWINGS ARE SCHEMATIC IN NATURE AND NOT INTENDED TO SHOW ALL POSSIBLE CONDITIONS. THE CONTRACTOR SHALL COORDINATE WITH THE RESPECTIVE DISCIPLINES TO VERIFY ALL DIMENSIONS AND METHODS OF CONSTRUCTION.
- 2. ALL DUCTWORK SHALL BE FABRICATED AND ERECTED PER SMACNA STANDARDS. SEE SPECIFICATION FOR PRESSURE CLASS. ALL DUCT SIZES SHOWN ARE NET FREE AREA WHERE INTERNAL LINER IS INDICATED THE DUCT SIZE SHALL BE INCREASED TO COMPENSATE FOR THE LINER.
- 3. ALL SQUARE TO ROUND DUCT TRANSITIONS SHALL BE SMOOTH SQUARE TO ROUND TRANSITIONS.
- 4. PORTIONS OF DUCTWORK VISIBLE THROUGH GRILLES AND REGISTERS IN FINISHED AREAS SHALL BE PAINTED FLAT BLACK.
- 5. REFER TO ARCHITECTURAL REFLECTED CEILING PLAN FOR EXACT LOCATION OF ALL CEILING MOUNTED AIR DISTRIBUTION DEVICES. IF A DEVICE IS NOT SHOWN ON THE REFLECTED CEILING PLAN, A SHOP DRAWING SHALL BE SUBMITTED FOR ARCHITECTS/ENGINEERS APPROVAL.
- 6. THE CONTRACTOR SHALL COORDINATE ALL FLOOR AND SLAB PENETRATIONS WITH THE ARCHITECT. TRANSITION ALL DUCTWORK ON THE BOTTOM AND SIDES UNLESS OTHERWISE INDICATED. MAINTAIN DUCTWORK HIGH AS POSSIBLE.
- 7. COORDINATE VOLTAGE AND PHASE OF EACH PIECE OF MECHANICAL EQUIPMENT WITH DIVISION 16 CONTRACTOR PRIOR TO SUBMITTING AND/OR PURCHASING THE EQUIPMENT. NO ALLOWANCES WILL BE MADE FOR EQUIPMENT DELIVERED TO THE JOB SITE WITH THE WRONG ELECTRICAL CHARACTERISTICS.
- 8. ALL REFRIGERANT PIPING SHALL BE SIZED BY THE EQUIPMENT MANUFACTURER BASED ON LENGTH OF RUN AND AMOUNT OF CHARGE REQUIRED TO PROVIDE CAPACITIES SCHEDULED.
- 9. AT ALL DUCT MOUNTED ELECTRIC RESISTANCE AND/OR FUEL BURNING HEATERS WHERE INTERNAL DUCT LINER IS SHOWN THE LINING SHALL BE INTERRUPTED FOR A MINIMUM OF 6 INCHES UPSTREAM AND 6 INCHES DOWNSTREAM OF THESE DEVICES. WHERE DUCT LINER HAS BEEN INTERRUPTED, WRAP WITH BLANKET TYPE DUCT INSULATION AND IN CONFORMANCE WITH SPECIFICATION SECTION 15350.
- 10. SEAL ALL DUCT PENETRATIONS OF SMOKE RESISTIVE ASSEMBLIES.
- 11. LOCATE ALL THERMOSTATS, INTERVAL THERMS, NIGHT SETBACKS, WALL SWITCHES, SENSORS, AND ANY OTHER HVAC CONTROL DEVICES SUCH THAT THEY DO NOT INTERFERE WITH CHALKBOARDS, TACKBOARDS, TEACHER'S CABINETS, DOORSWINGS, MILLWORK, ETC.

HVAC - LOWER FLOOR PLAN - NEW CLASSROOM WING (L13 M1)
SCALE: 1/8" = 1' - 0"

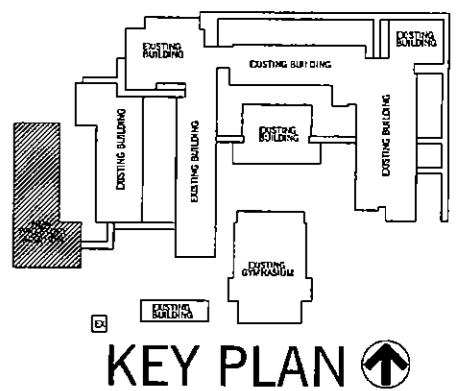


KEY PLAN with an arrow pointing up.

Southern A&E architects & engineers LLC 2831 Green Circle, Carrollton, GA 30186 (770) 437-3372		DRAWN MAY 17, 2007 JOB NUMBER 01-601-125
ADDITION TO VILLA RICA HIGH SCHOOL CARROLL COUNTY BOARD OF EDUCATION CARROLLTON, GEORGIA		
STATE OF GEORGIA REGISTERED PROFESSIONAL ENGINEER MICHAEL C. WALTON	DRAWING NUMBER M1 DRAWING 1 OF 4	



- 6 PIVOT NOTES - THIS SHEET ONLY**
- 1 ROUTE OF DIAMETER AND RESISTANT DUCT, UNLESS BY UNFITTED ANGLES, FROM FLAME HOOD COLLAR UP THROUGH ROOF TO MALET OF EXHAUST FAN. SEE ARCHITECTURAL DOCUMENTS FOR HOOD AND DUCT PENETRATION DETAILS. PLYM LIPPED DUCT TO MATCH WALL. SEE DETAIL G041.
 - 2 TERMINATE EXHAUST DUCT APPROXIMATELY 10" A.F.F. 20" FROM WITH IN 2" 1/2" GALVANIZED SCREEN.
 - 3 2" x 12" AIR-TEC VENTILATION OPENING WITH 1/2" CHAMFER. MALET ABOVE UPPER CEILING, AS HIGH AS POSSIBLE.
 - 4 INSTALL TYPE "SA" RETURN GRILLE WITH NO FLOW 10" A.F.F. COORDINATE WITH HEIGHT OF CEILING IN ADJACENT SPACE.
 - 5 ROUTE OF DIAMETER AND RESISTANT DUCT, UNLESS BY UNFITTED ANGLES, UP IN CHASE FROM FLAME HOOD COLLAR ON LOWER FLOOR, ROUTE UP THROUGH ROOF TO MALET OF EXHAUST FAN. SEE ARCHITECTURAL DOCUMENTS FOR HOOD AND DUCT PENETRATION DETAILS. PLYM LIPPED DUCT TO MATCH WALL. SEE DETAIL G043. PROVIDE FIRE DAMPER AT FLOOR PENETRATION.
 - 6 ROUTE CONDENSATE LINE DOWN INSIDE EXTERIOR WALL IN SPACE BETWEEN BLOCK AND BRICK. PENETRATE EXTERIOR WALL IN SAME LOCATION AS EXHAUST FAN. FOR LOWER LEVEL, BROOD HEAT PLUMPS, SEAL WALL PENETRATION WITH BLOCCING CAULK AND BRUTE CONDENSATE DRAIN TO UNDERGROUND DRAINAGE SYSTEM.



HVAC - UPPER FLOOR PLAN - NEW CLASSROOM WING M13
SCALE: 1/8" = 1' M2

Southern A&E architect & engineers I.L.C. 7531 Three Circle, Annull, Ga. 30146 (770) 816-7129	DATE: MAY 17, 2007
	JOB NUMBER: C1-601-126
ADDITION TO VILLA RICA HIGH SCHOOL CARROLL COUNTY BOARD OF EDUCATION CARROLLTON, GEORGIA	
	DRAWING NUMBER: M2 DRAWING 2 of 4

