

PROJECT NUMBER
0500

DATE
APRIL 11, 2007

DRAWN BY
JBL/NAJ

APPROVED BY
GER

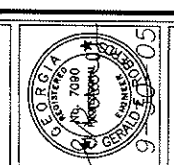
REVISIONS

ELEVATOR REPLACEMENT FOR THE
UNIVERSITY OF GEORGIA
FOOD SCIENCES BUILDING
ATHENS, GEORGIA

580 Colonial Park Drive
Koswell, Georgia 30075
Phone (770) 993-2034
Fax (770) 640-8354

Interior Designers
Planners
Architects

Millard
Inc.



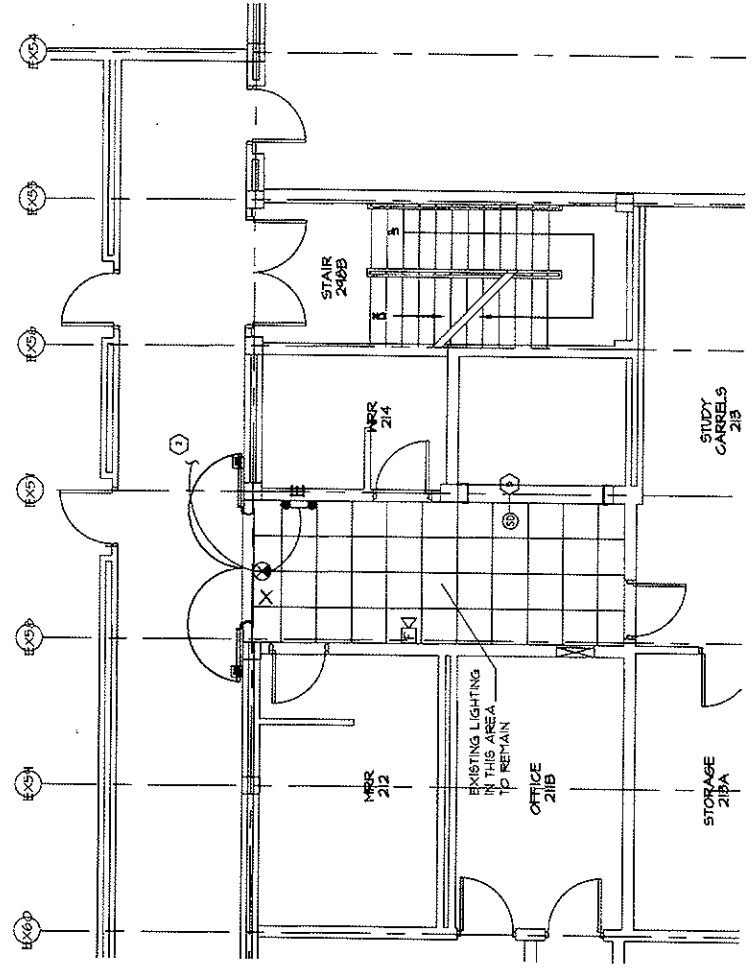
THIS DRAWING IS THE PROPERTY OF MILLARD INC ARCHITECTS AND IS NOT TO BE COPIED OR REPRODUCED IN ANY MANNER WITHOUT THE WRITTEN CONSENT OF MILLARD INC. IT IS ONLY TO BE USED FOR THE PROJECT SPECIFICALLY IDENTIFIED HEREIN.

SHEET NUMBER
E1.01

OF 1

ROBERDS
CONSULTING
ENGINEERS

45 EAST PACIFIC DRIVE, SUITE 100
ATLANTA, GEORGIA 30305
PHONE (404) 525-1140
FAX (404) 525-1141



PARTIAL FLOOR PLAN - SECOND FLOOR
SCALE: 1/4" = 1'-0"
FIELD VERIFY

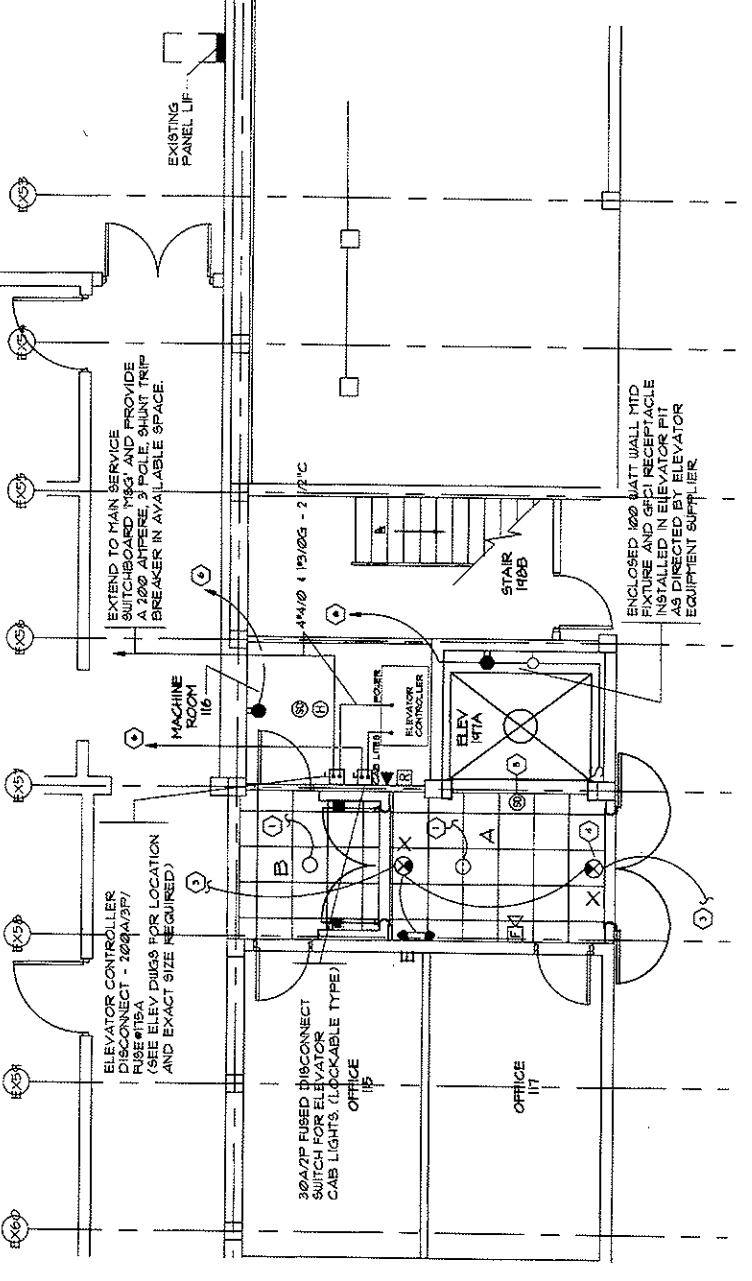
- NOTES:
1. PROVIDE 1/2" DIA CONDUIT, 10' OTHERWISE HOTEL, TWO #2 AND ONE #12 GROUND, FROM EXISTING PANEL TO NEW SERVICE PANEL AND TO NEW SERVICE PANEL.
 2. ALL FIRE ALARM DEVICES SHALL BE CONNECTED TO THE EXISTING FIRE ALARM SYSTEM AND OWNER FOR ALARM PROVIDED.
- LEGEND NOTES:
1. RECONNECT TO EXISTING LIGHTING CIRCUIT CURRENTLY SERVING THIS AREA.
 2. REMOVE AND CONNECT TO AN UNBUNDLED CIRCUIT SERVING THE EXIT SIGN AND 8" WIREMESH LIGHTING FIXTURES.
 3. REMOVE AND CONNECT TO THE UNBUNDLED CIRCUIT SERVING THE EXIT SIGN IN THIS AREA. MAINTAIN CONTINUITY OF EXISTING CIRCUIT.
 4. REMOVE EXISTING WALL MOUNTED EXIT SIGN AT THIS LOCATION AND REPLACE WITH NEW FIXTURE INDICATED.
 5. EXISTING ACTIVE BEYOND DETECTOR TO REMAIN.
 6. REMOVE EXISTING 1/2" DIA CONDUIT TO EXISTING DEAF SPACE OR PROVIDE A DEAF BRANCH IN AVAILABLE SPACE AND CONNECT.

SYMBOL LEGEND

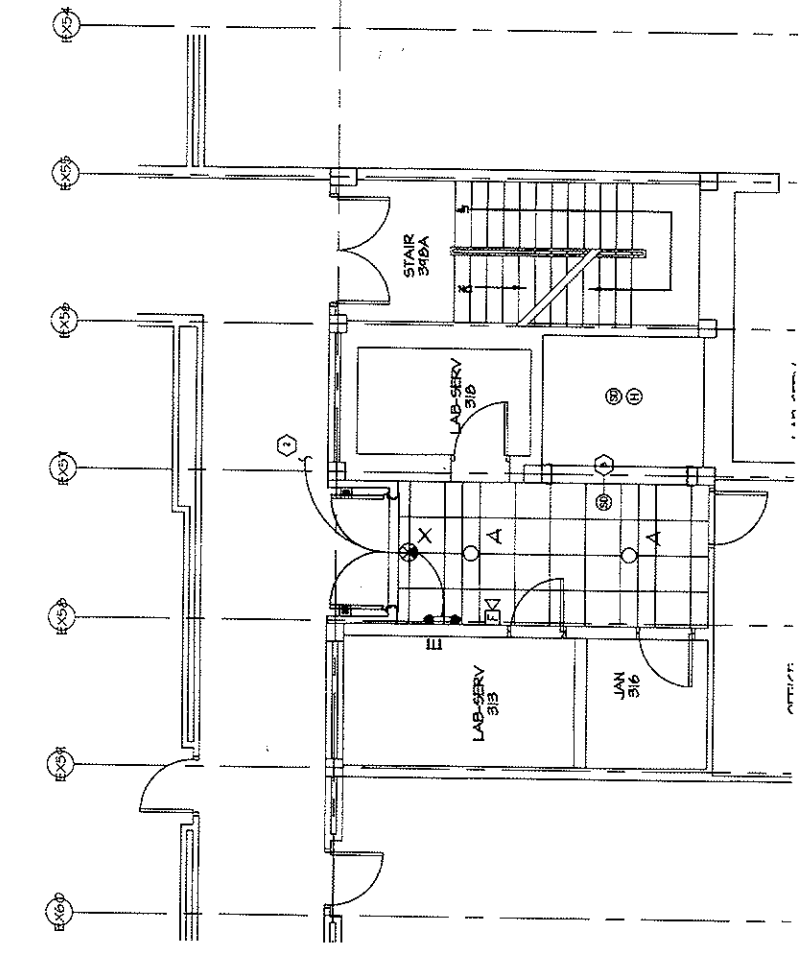
SYMBOL	DESCRIPTION	MOUNTING HEIGHT
⊕	TELEPHONE OUTLET - WALL MOUNTED	
⊖	CROSS MATCHING REQUIREMENTS ABOVE, NEUTRAL AND NOT RESPECTIVELY, ABOVE REPRESENTS LOWER RUN	
—	CONDUIT CONCEALED IN WALL OR ABOVE CEILING	
—	CONDUIT THROUGH	
⊕	FIRE ALARM ADDITIONAL ANNUNCIATOR	80" AFF
⊕	SMOKE DETECTOR - CEILING MOUNTED	
⊕	HEAT DETECTOR	
⊕	DOOR HOLD OPEN DEVICE - CONNECT TO FIRE ALARM SYSTEM	
⊕	RELAY DEVICE - CONNECT TO FIRE ALARM SYSTEM	
⊕	WALL MOUNTED LIGHTING FIXTURE	AS NOTED
⊕	2" x 4" FLUORESCENT LIGHTING FIXTURE	
⊕	2" x 2" FLUORESCENT LIGHTING FIXTURE	
⊕	EXIT SIGN - DIMENSIONED RECTANGULAR OR SYMMETRICAL INDICATE FACES. ABOVE INDICATE DIRECTIONAL ORIENTATION.	
⊕	DOUBLE HEAD BATTERY MOUNTED EMERGENCY LIGHTING FIXTURE	
⊕	GROUND FAULT CURRENT INTERRUPTER TYPE RECEPTACLE	
⊕	PANELBOARD 240V ON 800V	
⊕	DISCONNECT SWITCH - 3000AMP SWITCH 800V POLE PULL OUTS	
⊕	EXIT LIGHTING SWITCH	80" AFF

LIGHTING FIXTURE SCHEDULE

MARK	DESCRIPTION	MANUFACTURER	MODEL	TYPE	NO.	WATTS
A	EMERGENCY LIGHTING FIXTURE TO REMAIN. CONTINUATOR SHALL CLEAR AND BE ALARM HISTORY					
B	TWO FOOT BY TWO FOOT, FOUR LAMP, FLUORESCENT FIXTURE. 50 WATT. 2800K. SHROUDED FIXTURE.	ICEDAL	277	TRAY/HOOK	4	100
E	EMERGENCY BATTERY LIGHT. 100 WATT. 120 VOLT. 120 WATT. 120 VOLT. 120 WATT. 120 VOLT.	ICEDAL	277	FLUSH MOUNT	12	100
X	LED ONE 800 LUMENS WITH WHITE CAST ALUMINUM HOUSING AND INTERNAL BATTERY BROUKE APPROX AS NOTED		277	FLUSH MOUNT	3	30



PARTIAL FLOOR PLAN - FIRST FLOOR
SCALE: 1/4" = 1'-0"
FIELD VERIFY



PARTIAL FLOOR PLAN - THIRD FLOOR
SCALE: 1/4" = 1'-0"
FIELD VERIFY

To Order Plans go to www.lidrepro.com