



443 1th Street NW
Atlanta, Georgia 30318
Tel: 404.583.2110
www.nodus.com

CONSULTANTS



Spencer Bristol Engineering, Inc.
1000 Peachtree Street, NE
Atlanta, Georgia 30309
Tel: 770.432.8222 Fax: 770.44.0531
SBE Provider No. 0007



Bioscience 404 E Auditorium Renovation
Athens, GA - 30602
University of Georgia
Physical Plant Division

BID DOCUMENTS

MARK	DATE	DESCRIPTION
08/10/07	09/09/07	BID DOCUMENTS
09/09/07		FPD REVIEW SET

MODEL#	WBS
DRAWN BY	DAB
CHECKED BY	
COPYRIGHT	© 2007 NODUS LLC

SHEET TITLE

ELECTRICAL
GENERAL

E0.1

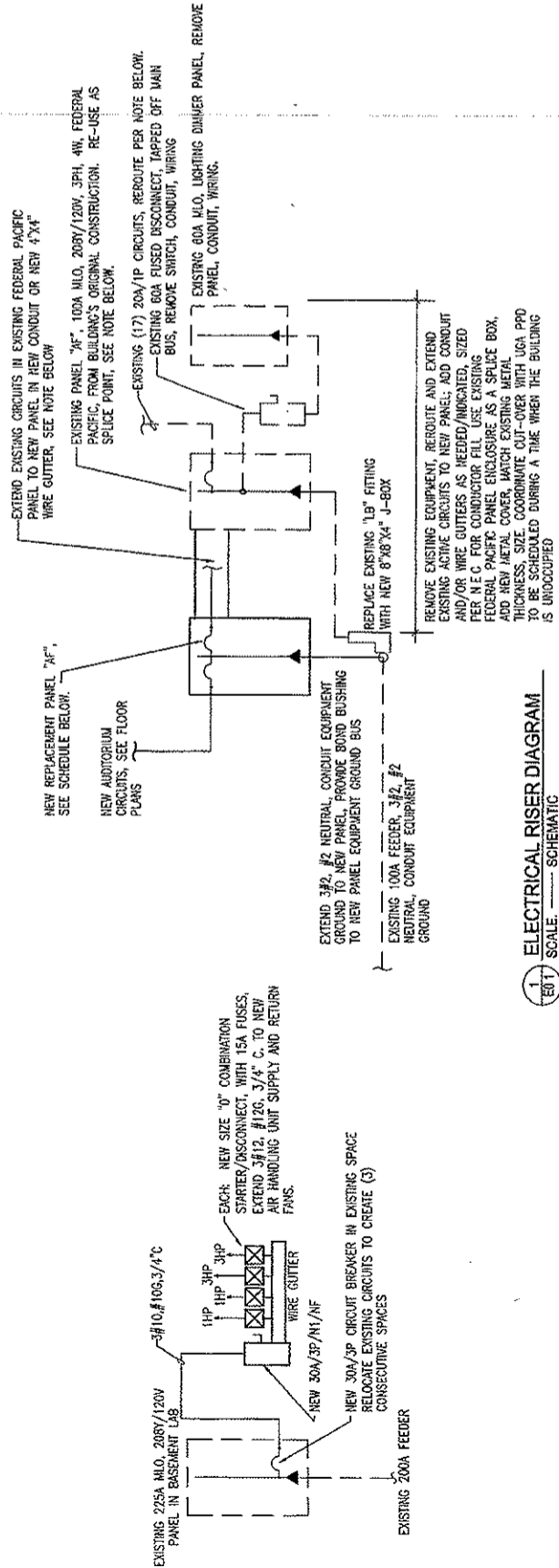
ELECTRICAL SYMBOL LEGEND

WIRING IN CONDUIT HIDDEN TO PANEL. TIC MARKS INDICATE QUANTITY OF CONDUCTORS. NO TIC MARKS INDICATES 2#12, 1/2" C, UNLESS OTHERWISE NOTED. EQUIPMENT GROUNDING CONDUCTORS ARE NOT INDICATED ON RIGID CONDUIT, UNLESS OTHERWISE NOTED. CONDUIT SHALL BE SCHEDULE 40 EMT, UNLESS OTHERWISE NOTED. CONDUIT SHALL BE SCHEDULE 40 EMT, UNLESS OTHERWISE NOTED. CONDUIT SHALL BE SCHEDULE 40 EMT, UNLESS OTHERWISE NOTED.

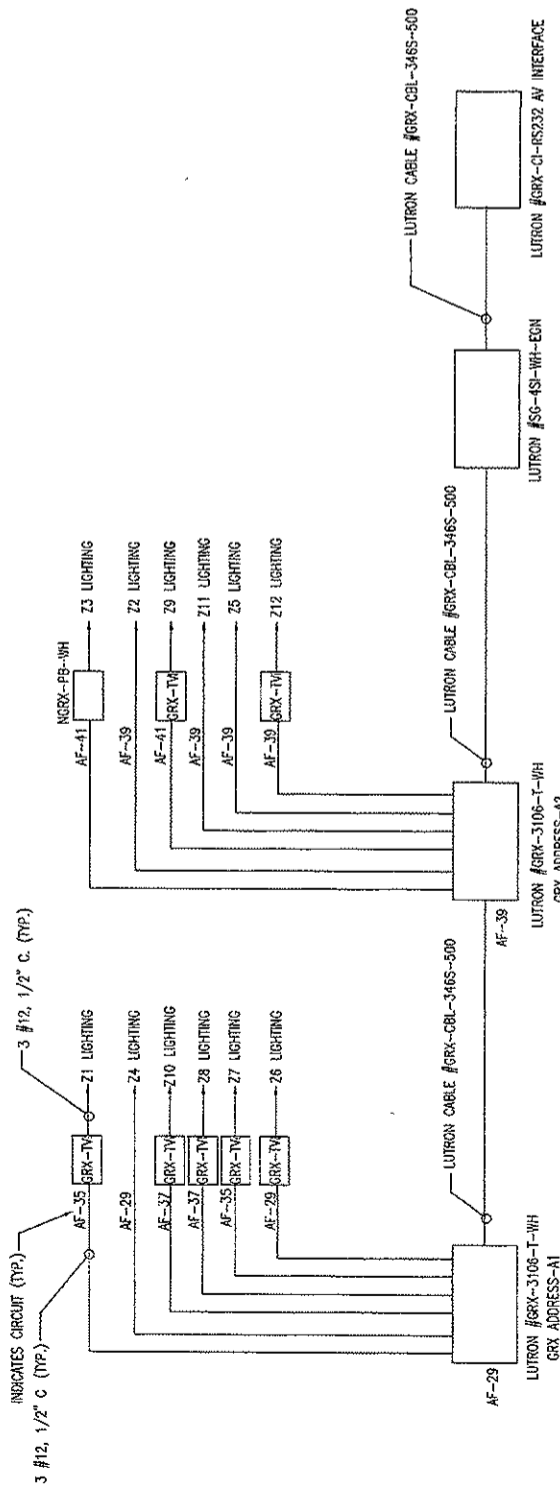
- WIRING IN CONDUIT INSTALLED CONCEALED IN CEILING AND/OR WALL
- WIRING IN CONDUIT INSTALLED EXPOSED ON CEILING AND/OR WALL
- WIRING IN CONDUIT INSTALLED CONCEALED IN FLOOR AND/OR WALL
- JUNCTION BOX, CEILING MOUNTED.
- JUNCTION BOX, WALL MOUNTED
- JUNCTION BOX, FLOOR MOUNTED.
- FLUORESCENT FIXTURE AND OUTLET, CEILING MOUNTED.
- FLUORESCENT FIXTURE AND OUTLET, CEILING MOUNTED, EMERGENCY.
- FLUORESCENT STRIP FIXTURE AND OUTLET, SURFACE MOUNTED
- FLUORESCENT STRIP FIXTURE AND OUTLET, SURFACE MOUNTED, EMERGENCY
- H.I.D. FLOODLIGHTING LUMINAIRE
- EXIT FIXTURE WITH EMERGENCY BATTERY PACK, CEILING MOUNTED
- COMBINATION EXIT/EGRESS FIXTURE, CEILING OR WALL MOUNTED, AS INDICATED.
- EMERGENCY BATTERY PACK FIXTURE, CEILING OR WALL MOUNTED, AS INDICATED
- SINGLE POLE SWITCH, 4-0" AFF., HUBBELL #1221.
- THREE-WAY SWITCH, 4-0" AFF., HUBBELL #1223
- DIMMER SWITCH, 4-0" AFF., LUTRON #H-2000 (TWO-GANG BOX)
- DUPLEX RECEPTACLE, 20A, 120V, 18" AFF., HUBBELL #5362
- DUPLEX RECEPTACLE, 18" AFF., WITH GROUND FAULT INTERRUPTER, HUBBELL #GFI-5252
- DUPLEX RECEPTACLE, 18" AFF., ISOLATED GROUND TYPE HUBBELL #5362S
- TWO DUPLEX RECEPTACLES UNDER COMMON PLATE, 18" AFF., HUBBELL #5262.
- SINGLE RECEPTACLE, 20A, 120V, 18" AFF., HUBBELL #5361
- VOICE/DATA OUTLET BOX, 18" AFF., WITH CONDUIT ROUTED AS DETAILED OR NOTED. CABLING AND DEVICE PLATES - PER SPECIFICATIONS, EXCEPT AS NOTED.
- MOTOR, SIZE AS NOTED.
- DISCONNECT SWITCH, AMPACITY/POLES/ENCLOSURE/FUSING AS NOTED
- PANELBOARD
- FREE ALARM LARM/STROBE DEVICE 80" AFF. TO BOTTOM OF DEVICE. CONNECT NEW DEVICES TO EXISTING SYSTEM.
- CEILING MOUNTED SPEAKER
- WALL MOUNTED SPEAKER.
- SINGLE CIRCUIT/SERVICE PLUG/LOAD

REPLACEMENT PANEL "AF"

CMT	TRIP	POLE	DESCRIPTION	CONNECTED LOAD KVA			MINIMUM A.I.C. - 22,000A	MOUNTING SURFACE
				PHASE A	PHASE B	PHASE C		
1	20/1		PLUG/LOAD	1.0 / 0.8			EXISTING LOADS	20/1
3	20/1		PLUG/LOAD		1.0 / 0.8		EXISTING LOADS	20/1
5	20/1		QUAD OUTLET			1.0 / 0.8	EXISTING LOADS	20/1
7	20/1		PLUG/LOAD	1.0 / 0.8			EXISTING LOADS	20/1
9	20/1		PLUG/LOAD		1.0 / 0.8		EXISTING LOADS	20/1
11	20/1		QUAD OUTLET			1.0 / 0.8	EXISTING LOADS	20/1
13	20/1		SCREENS	0.4 / 0.8			EXISTING LOADS	20/1
15	20/1		A/V EQUIPMENT		0.8 / 0.8		EXISTING LOADS	20/1
17	20/1		SPARE				EXISTING LOADS	20/1
19	20/1		SPARE		0.8 / 0.8		EXISTING LOADS	20/1
21	20/1		A/V EQUIPMENT				EXISTING LOADS	20/1
23	20/1		SPARE				EXISTING LOADS	20/1
25	20/1		SPARE		0.8 / 0.8		EXISTING LOADS	20/1
27	20/1		A/V EQUIPMENT				EXISTING LOADS	20/1
29	20/1		LIGHTING - 24,26		0.8 / 0.8		EXISTING LOADS	20/1
31	20/1		SPARE				EXISTING LOADS	20/1
33	20/1		A/V EQUIPMENT		0.8 / 0.8		EXISTING LOADS	20/1
35	20/1		LIGHTING - 21,27				EXISTING LOADS	20/1
37	20/1		LIGHTING - 28,210	1.4 / -			EXISTING LOADS	20/1
39	20/1		LIGHTING - 22,211,25,212		1.6 / -		EXISTING LOADS	20/1
41	20/1		LIGHTING - 23,29			1.7 / -	EXISTING LOADS	20/1
NOTES				8.6	11.8	10.6	TOTAL CONNECTED LOAD	31.0 KVA
PROVIDE ISOLATED GROUND KIT							TOTAL CONNECTED AMPS	86 AMPS



1. ELECTRICAL RISER DIAGRAM
SCALE: SCHEMATIC





443 11th Street NW
Atlanta Georgia 30318
Tel: 404.525.1111
Fax: 404.525.3110
www.nodusllc.com

CONSULTANTS



Spencer Bristol Engineering, Inc.
1000 Peachtree Street, N.E.
Atlanta, Georgia 30309
Tel: 770.443.9438 Fax: 770.443.9424
SSE Project No. 0607



Bioscience 404 E Auditorium Renovation
University of Georgia
Athens, GA - 30602

University of Georgia
Physical Plant Division

BID DOCUMENTS

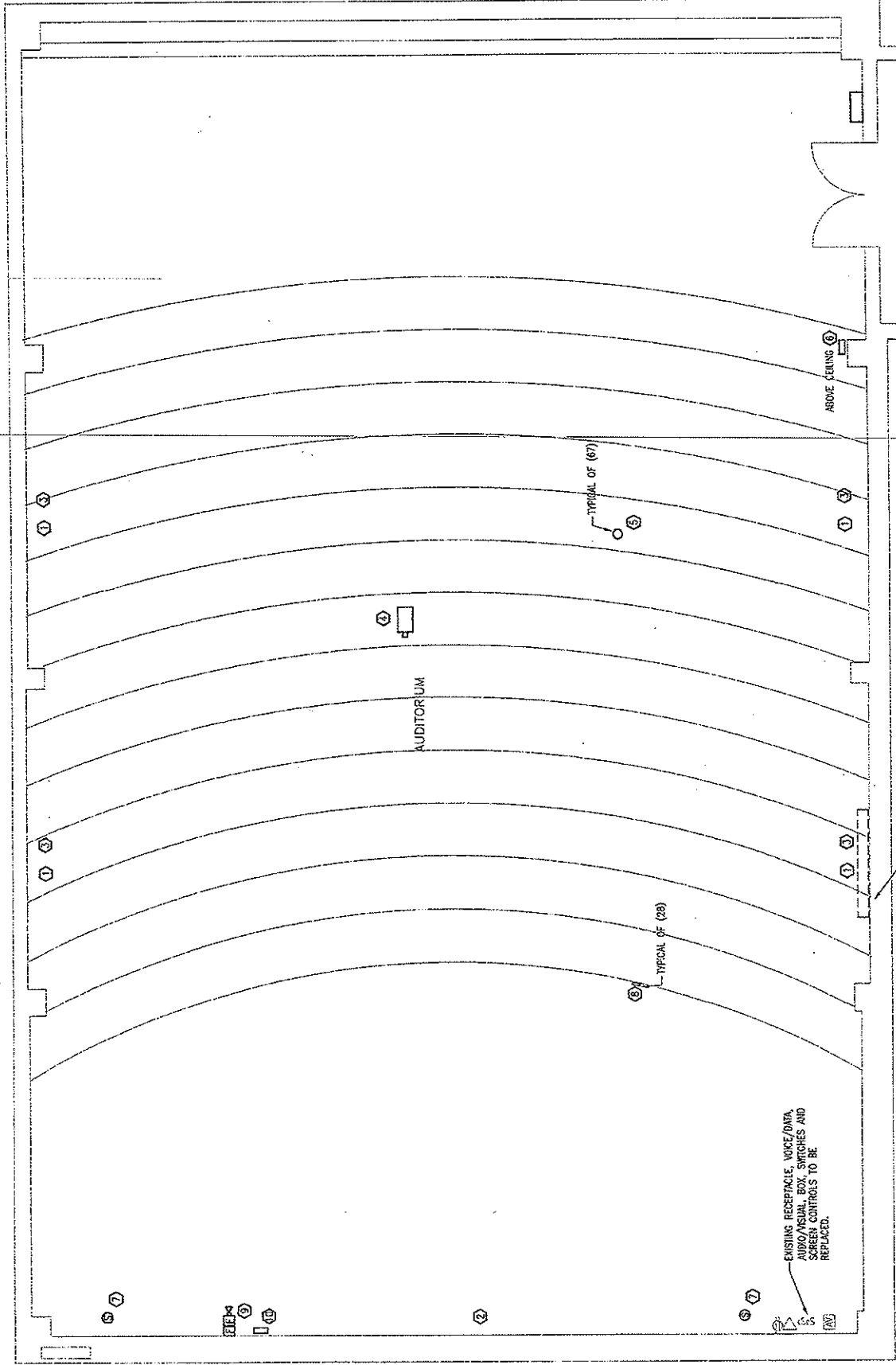
MARK	DATE	DESCRIPTION
	03/18/07	BID DOCUMENTS
	03/06/07	PPD REVIEW SET

NO. 10993
EXPIRES 12/31/07
STATE OF GEORGIA
REGISTERED PROFESSIONAL ENGINEER
SPENCER BRISTOL ENGINEERING, INC.
1000 PEACHTREE STREET, N.E.
ATLANTA, GEORGIA 30309
TEL: 770.443.9438 FAX: 770.443.9424

SHEET TITLE

AUDITORIUM
ELECTRICAL
DEMOLITION
PLAN

E1.1



- KEY NOTES:**
1. DEMOLISH EXISTING WIRING ON WALLS. RETAIN CIRCUITS FOR REUSE.
 2. DEMOLISH EXISTING VOICE/DATA OUTLETS ON THIS WALL.
 3. DEMOLISH EXISTING RECEPTACLES ON THIS WALL. REMOVE BOXES AND WIRING TO FIRST ACCESSIBLE JUNCTION BOX. RETAIN CIRCUITS FOR REUSE.
 4. DEMOLISH EXISTING CONNECTION TO PROJECTOR. RETAIN CIRCUIT FOR RELOCATION TO NEW PROJECTOR LOCATION.
 5. REMOVE EXISTING DOWNLIGHT AND BRANCH WIRING.
 6. RETAIN EXISTING WIRELESS HUB AND CONNECTIONS FOR REUSE.
 7. DEMOLISH EXISTING SPEAKERS, AND RETURN TO OWNER.
 8. EXISTING RECESSED INCANDESCENT STEPLIGHT IN STAIR RISER. RETAIN EXISTING WIRING, AND CONDUITS, REMOVE BRANCH WIRING. PROVIDE NEW CONDUIT-SEE ARCHITECTURE.
 9. EXISTING FIRE ALARM DEVICE TO BE REPLACED - SEE NEW WORK PLANS.
 10. DEMOLISH EXISTING LIGHTING CONTROL SWITCH AND BRANCH WIRING.
 11. REMOVE EXISTING LIGHTING CONTROL SWITCH, REMOVE BOX FOR NEW DEVICE INSTALLATION.

- DEMOLITION NOTES:**
1. DEMOLISH DEVICES AND FIXTURES INDICATED. RETAIN CIRCUITRY FOR RECONNECTION TO NEW DEVICES AND FIXTURES.
 2. RETAIN ALL FIXTURES AND DEVICES NOT NOTED FOR DEMOLITION. REPAIR EXISTING CIRCUITRY AS REQUIRED TO MAINTAIN SERVICE.
 3. WHERE EXISTING FIXTURE OPENINGS ARE TO BE REUSED, RECONFIGURE OPENING FOR NEW FIXTURES AS REQUIRED AFTER DEMOLITION.

1 AUDITORIUM ELECTRICAL DEMOLITION PLAN
E1.1 SCALE: 1/4" = 1'-0"

LIGHTING FIXTURE SCHEDULE

NOTES: TYPE REFERS TO LETTER DESIGNATION INDICATED ON THE DRAWINGS. "DESCRIPTION" REFERS TO THE DESCRIPTION OF THE FIXTURE. "QUANTITY" REFERS TO THE QUANTITY OF FIXTURES. "TYPE" REFERS TO THE TYPE OF FIXTURE. "LAMP" REFERS TO THE LAMP TYPE. "LAMP QUANTITY" REFERS TO THE QUANTITY OF LAMPS. "LAMP WATTAGE" REFERS TO THE WATTAGE OF THE LAMP. "LAMP VOLTAGE" REFERS TO THE VOLTAGE OF THE LAMP. "LAMP DIMENSIONS" REFERS TO THE DIMENSIONS OF THE LAMP. "LAMP WEIGHT" REFERS TO THE WEIGHT OF THE LAMP. "LAMP FINISH" REFERS TO THE FINISH OF THE LAMP. "LAMP MATERIAL" REFERS TO THE MATERIAL OF THE LAMP. "LAMP MANUFACTURER" REFERS TO THE MANUFACTURER OF THE LAMP. "LAMP MODEL NUMBER" REFERS TO THE MODEL NUMBER OF THE LAMP. "LAMP PART NUMBER" REFERS TO THE PART NUMBER OF THE LAMP. "LAMP ACCESSORIES" REFERS TO THE ACCESSORIES OF THE LAMP. "LAMP OPTIONS" REFERS TO THE OPTIONS OF THE LAMP. "LAMP COMMENTS" REFERS TO THE COMMENTS OF THE LAMP. "LAMP NOTES" REFERS TO THE NOTES OF THE LAMP. "LAMP DIMENSIONS" REFERS TO THE DIMENSIONS OF THE LAMP. "LAMP WEIGHT" REFERS TO THE WEIGHT OF THE LAMP. "LAMP FINISH" REFERS TO THE FINISH OF THE LAMP. "LAMP MATERIAL" REFERS TO THE MATERIAL OF THE LAMP. "LAMP MANUFACTURER" REFERS TO THE MANUFACTURER OF THE LAMP. "LAMP MODEL NUMBER" REFERS TO THE MODEL NUMBER OF THE LAMP. "LAMP PART NUMBER" REFERS TO THE PART NUMBER OF THE LAMP. "LAMP ACCESSORIES" REFERS TO THE ACCESSORIES OF THE LAMP. "LAMP OPTIONS" REFERS TO THE OPTIONS OF THE LAMP. "LAMP COMMENTS" REFERS TO THE COMMENTS OF THE LAMP. "LAMP NOTES" REFERS TO THE NOTES OF THE LAMP.

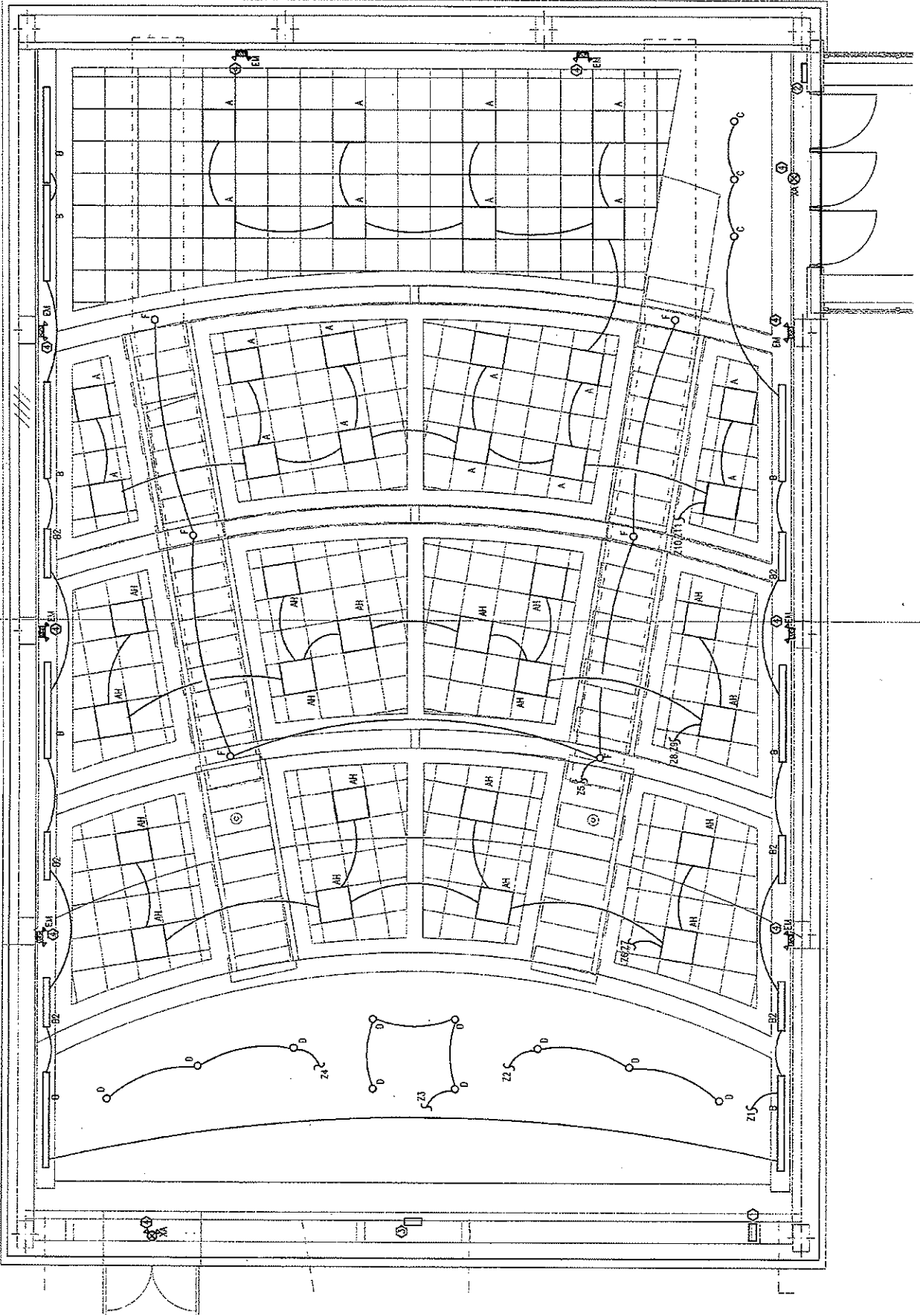
- A: 212 DIRECT/INDIRECT FLUORESCENT FIXTURE WITH PERFORATED BASKET, H=10 LEVEL BULB, (2)50 WATT, METALUX EPX SERIES
- AH: SAUCER TYPE "A", BUT WITH (2)150 WATT LAMPS
- B: RECESSED LINEAR FLUORESCENT WALL-WASHER, SINGLE TISHO LAMP IN SECTION, NEO-WAY SERIES-23, 6' LENGTH
- B2: SAUCER TYPE "B", 3'-FOOT LENGTH
- C: COMPACT FLUORESCENT DOWNLIGHT, VERTICAL 22W PL LAMP, NURT VERSION #P937
- D: INCANDESCENT DOWNLIGHT, 250W PAR SPOT LAMP, NURT VERSION #IC7319
- E: DECORATIVE EMERGENCY LIGHTING FIXTURE, LITHONIA AFFINITY SERIES
- F: INCANDESCENT DOWNLIGHT, 60W A-19 LAMP, NURT VERSION #P937
- YA: COMBINATION EXIT/EGRESS FIXTURE WITH BATTERY BACKUP, LITHONIA QUANTUM SERIES

DIMMER ZONE SCHEDULE

- Z1: SIDE WALLS FLUORESCENT ON/OFF
- Z2: FRONT-LEFT INCANDESCENT - DIMMED
- Z3: FRONT-CENTER INCANDESCENT - DIMMED
- Z4: FRONT-RIGHT INCANDESCENT - DIMMED
- Z5: ASLES INCANDESCENT - DIMMED
- Z6: SPARE INCANDESCENT - DIMMED
- Z7: SEATING FRONT - LO - ON/OFF
- Z8: SEATING FRONT - HI - ON/OFF
- Z9: SEATING MID - LO - ON/OFF
- Z10: SEATING MID - HI - ON/OFF
- Z11: SEATING REAR - LO - ON/OFF
- Z12: SEATING REAR - HI - ON/OFF

KEY NOTES:

- (1) APPLY THIS SHEET ONLY
- (2) LITURON A-ZONE PANELS VERTICALLY STACKED. PROVIDE WITH RS232 A/V INTERFACE MODULE (SEE KEYNOTE #2) AND OTHER RELAYS, POWER BOOSTERS, AND PERIPHERALS AS INDICATED ON SHEET E0.1. MOUNT PANELS, RELAYS, POWER BOOSTERS, ETC. IN LOCKABLE NEWM-1 CABINET FLUSH WITH WALL.
- (3) SINGLE SCENE SWITCH LOCATED AT ENTRANCE.
- (4) LITURON AV-RS232 INTERFACE, MOUNT IN A/V CABINET; COORDINATE WITH A/V EQUIPMENT.
- (5) EXIT/EGRESS LIGHTING: PROVIDE CONNECTIONS TO UNSWITCHED EMERGENCY LIGHTING CIRCUIT IN THIS AREA. WHERE EXIT FIXTURES ARE SHOWN TO BE WALL-MOUNTED, WALL MOUNT 6" ABOVE TOP OF DOOR JAMB. WHERE EXIT FIXTURES ARE SHOWN TO BE CEILING MOUNTED, MOUNT ADJACENT TO DOOR MOUNTED; WHERE EMERGENCY BATTERY UNIT FIXTURES ARE INDICATED TO BE WALL-MOUNTED, MOUNT 6" BELOW ADJACENT ACCT. CEILING SURFACE.



1 AUDITORIUM ELECTRICAL LIGHTING PLAN
E2.1 SCALE: 1/4" = 1'-0"

NODUS LLC
443 11th Street NW
Atlanta, Georgia 30318
Tel: 404.593.2110
Fax: 404.593.2110
www.nodusllc.com

SPENCER BRISTOL ENGINEERING, INC.
1000 N. Oak Parkway NW, Suite 100
Atlanta, Georgia 30329
Tel: 404.525.1000
Fax: 404.525.1001
555 Paces N.W. 0629



Bioscience 404 E Auditorium Renovation
University of Georgia
Athens, GA - 30602
University of Georgia
Physical Plant Division

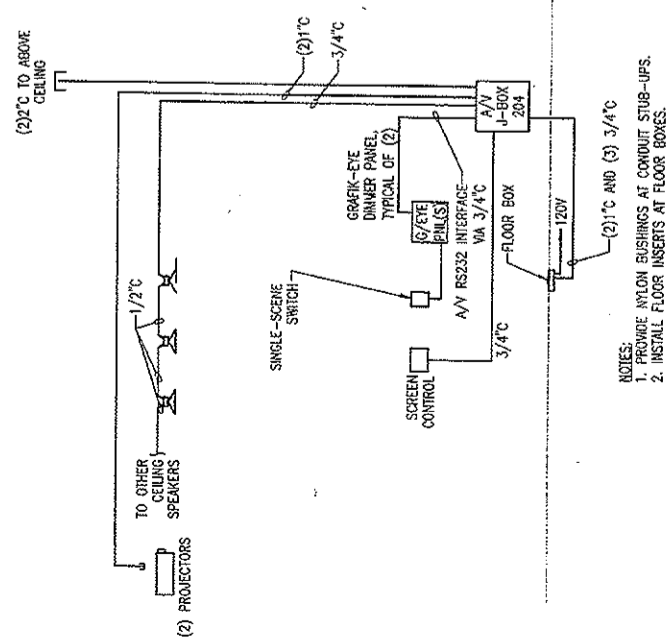
BID DOCUMENTS	
MARK	DESCRIPTION
08/19/07	BID DOCUMENTS
03/26/07	PPD REVIEW SET
DATE	DESCRIPTION

ISSUED BY	YES
OWNER BY	NO
CHK'D BY	DAB
DATE	
PROJECT	
DESIGNER	
CLIENT	

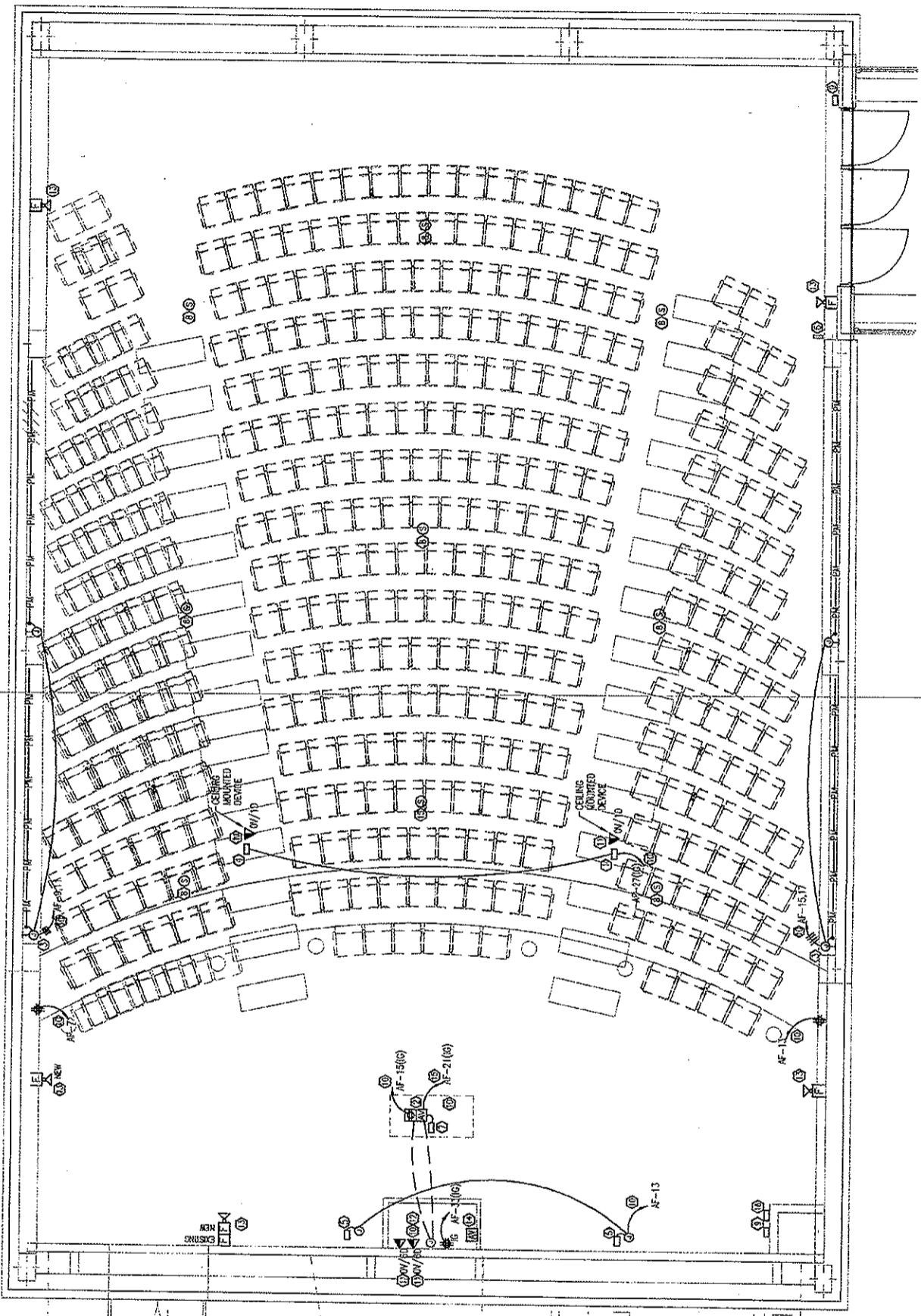
AUDITORIUM
ELECTRICAL
LIGHTING
PLAN

E2.1

- KEY NOTES:** APPLY THIS SHEET ONLY
- 1. NEW CEILING MOUNTED PROJECTOR. PROVIDE NEW ISOLATED GROUND RECEPTACLE AND NEW 120V/20A ISOLATED GROUND CIRCUIT. REFER TO ARCHITECTURAL FOR MOUNTING DETAIL.
 - 2. THRU SERVICE FLOOR BOX FLUSH MOUNTED IN SLAB OR RAISED FLOOR. COORDINATE ROUGH-IN WITH FLOOR TYPE AND ARCHITECTURAL SECTIONS. SEE REMOTE #15.
 - 3. PROVIDE FLUSH MOUNTED WALL SWITCH. FOR CONNECTION TO NEW FLUSHMOUNT. EXTERIOR CONDUIT VERTICALLY, TIGHT TO CORNER OF WALL. TO THE ACCESSIBLE CEILING THEN THROUGH A CORED OPENING IN FLOOR TO NEW PANEL. 4" BELOW. SEE ELEVATION DETAIL.
 - 4. NOT USED.
 - 5. NEW PROJECTION SCREEN. INSTALL CONTROLS AS PROVIDED WITH SCREEN.
 - 6. WIRELESS NETWORK DEVICE. EXISTING TO REMAIN.
 - 7. OCCUPANT CAMERA. MOUNTED AT PODIUM. CONNECT TO PODIUM CIRCUITS.
 - 8. NEW SPEAKER BASKETS.
 - 9. LIGHTING CONTROL STATIONS (2 GRAPHIC-EYE UNITS) - SEE LIGHTING PLAN.
 - 10. PROVIDE NEW 20A/1P CIRCUIT TO REPLACEMENT 208/120 VOLT PANEL. A/V DEVICES ARE TO BE CONNECTED TO PANEL. 4" WITH 2"1/2" EMT. 1/2" EMT. USE DEDICATED NEUTRALS. DO NOT SHARE NEUTRALS. CONNECT ALL TO SAME PHASE IN PANEL.
 - 11. EXTEND DATA CABLE TO NETWORK CLOSET. TERMINATE ON PATCH PANEL PER I.U.C.A. E.I.T.S. STANDARDS. EXTEND WALL MOUNTED CABLE TO PODIUM VIA TRENCHED CONDUIT.
 - 12. ROUTE HORIZONTALLY BELOW FLOOR IN TRENCH, THEN CONCEALED UP TO ABOVE CEILING.
 - 13. CONNECT NEW FIRE ALARM DEVICE TO EXISTING NOTIFICATION APPLIANCE CIRCUIT. MATCH EXISTING DEVICES AND WIRING METHODS, REPROGRAM, CONFIRM OPERATION, RE-CERTIFY.
 - 14. AUDIO/VISUAL PULL-BOX: 12"X12"X4" WITH OVERSIZED COVER FOR SURFACE MOUNTING IN WALL. SEE DETAIL 2/E2.2.



2. AUDITORIUM AUDIO/VISUAL WIRING/CONDUIT DIAGRAM
SCALE: SCHEMATIC ONLY



1. AUDITORIUM ELECTRICAL POWER AND SYSTEMS PLAN
SCALE: 1/4" = 1'-0"

University of Georgia
Athens, GA - 30602

Bioscience 404 E Auditorium Renovation

Physical Plant Division
University of Georgia

MARK	DATE	DESCRIPTION
03/19/07		BID DOCUMENTS
03/19/07		PPD REVIEW SET

ISSUED FOR:	WBS
PREPARED BY:	DAB
CHECKED BY:	DAB
DATE:	03/19/07
PROJECT:	BIOSCIENCE RENOVATION

SHEET TITLE

AUDITORIUM ELECTRICAL POWER AND SYSTEMS PLAN

E2.2

NODUS LLC
443 11th Street NW
Atlanta Georgia 30318
Tel: 404.593.2110
Fax: 404.593.2110
www.nodusllc.com

SPENCER Bristol Engineering, Inc.
240 Cox Oak Parkway, Suite 100
Atlanta, Georgia 30328
Tel: 770.413.8228 Fax: 770.413.6228
SIC: 8000000000



CONSULTANTS