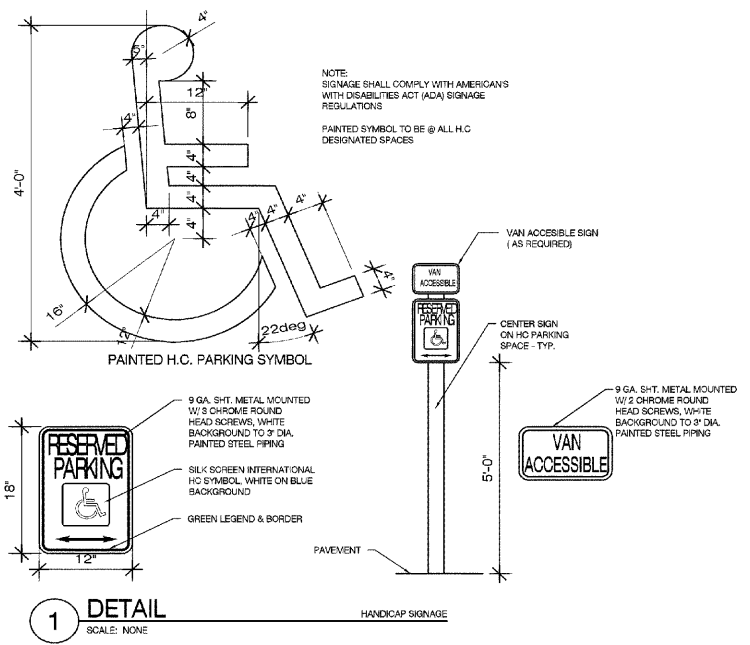


2 DETAIL  
SCALE: NONE



1 DETAIL  
SCALE: NONE

# LANDLORD CONSTRUCTION NOTES (REFER ONLY TO NOTES THAT ARE INDICATED BY LETTER KEY ON PLAN):

A. EXISTING AIR HANDLING UNITS TO REMAIN. LANDLORD TO SERVICE UNITS AND PROVIDE PARTS NECESSARY TO BRING UNITS UP TO ORIGINAL OPERATING SPECIFICATIONS. ANY AND ALL WORK RELATED TO THIS INCLUDING BUT NOT LIMITED TO ALL UTILITIES, ROOF, STRUCTURAL STEEL, DUCTWORK, CONDENSATION LINES, ECT.

B. LANDLORD IS TO PROVIDE A WEATHER PROOF ROOF, FREE FROM LEAKS.

C. REPAIR EXISTING CURBS THAT ARE DAMAGED IN THE PARKING LOT.

D. REPAIR GUTTERS AND DOWNSPOUTS AS REQUIRED.

E. LANDLORD TO ERECT NEW MULTI-TENANT PYLON SIGN AT LANDLORD'S EXPENSE. VERIFY LOCATION W/ OWNER.

F. REMOVE DAMAGED AND PEELING PAINT, ALGAE, AND MOLD ON REAR OF BUILDING AND LOADING DOCKS. APPLY BLOCK FILLER AND PAINT AS REQUIRED.

# TSC CONSTRUCTION NOTES (REFER ONLY TO NOTES THAT ARE INDICATED BY NUMERICAL KEY ON PLAN):

1. INSTALL NEW 8" FENCE AND GATES ACCORDING TO DIMENSIONS SHOWN ON PLAN. SEE FENCE SPECIFICATIONS THIS SHEET.

2. NEW PIPE BOLLARD OR BOLLARDS, SEE DETAIL 2 THIS SHEET.

3. 5' SWING GATE.

4. 2 - 15'-0" CANTILEVERED CHAIN LINK GATES.

5. NEW CONCRETE RAMP TO BE TIED INTO EXISTING SIDEWALK AND SHALL BE A MIN. 6" THICK 4000 PSI CONCRETE W/ 6 X 6 W2.9 X W2.9 W.W.F. ON 6" DRAINABLE BASE ON COMPACTED FILL. SLOPE 1:12.

6. NEW 4" PAINTED YELLOW STRIPE INDICATING EXTENT OF DRIVE AISLE.

7. DUMPSTER LOCATION. VERIFY ON SITE.

8. ACCESSIBLE PARKING SPACES. PROVIDE SIGNAGE AND WHEEL STOPS. SEE DETAIL 1 THIS SHEET. VERIFY NUMBER AND LOCATION REQUIRED WITH LOCAL ORDINANCE.

9. LANDLORD TO ERECT NEW MULTI-TENANT PYLON SIGN @ LANDLORD'S EXPENSE. PROVIDE ELECTRICAL TO SIGNAGE. TSC TO RECEIVE PRO-RATIONAL SHARE OF THE NEW PYLON SIGN. TSC SIGN COMPANY TO INSTALL LETTERING ON SIGN PANEL.

10. CONTRACTOR TO BLACK OUT CENTERLINE OF PARKING SPACES WHERE SHOWN TO PROVIDE FOR 8' (TRUCK AND TRAILER) PULL THROUGH SPACES.

\*NEW 8 FOOT CHAIN LINK FENCE SPECIFICATIONS:

1. FABRIC: 96" 9 GA. GALVANIZED (2" MESH) CHAIN LINK FABRIC.

2. TOP & BOTTOM RAIL: 1 5/8" O.D. FULL WEIGHT PIPE, 2.27 LBS. PER FOOT (MIN). TOP RAIL TO BE JOINED WITH 1 5/8" SLEEVE. BOTTOM RAIL @ 18" ABV. GRADE.

3. LINE POST: 2 1/2" O.D. FULL WEIGHT PIPE, 3.65 LBS. PER FOOT (MIN). LINE POST TO BE SET 10" ON CENTER MAX. SPACING. CONCRETE FOOTING TO BE 6" DIA. BY 30" DEEP CONC.

4. TERMINAL POST: 3" O.D. FULL WEIGHT PIPE, 5.79 LBS. PER FOOT (MIN). SET IN 8" DIA. BY 30" DEEP CONC. FOOTING.

5. GATE POST: 4" O.D. FULL WEIGHT PIPE, 9.10 LBS. PER FOOT (MIN). 6" DIA. 36" DEEP CONC. FOOTING.

6. GATES: (A) 2 - 15 FOOT CANTILEVERED CHAIN LINK GATES AND 1 - 5 FOOT SWING GATE WITH FRAMEWORK OF 1 5/8" FULL WEIGHT PIPE, 2.27 LBS. PER FOOT (MIN). GATES BRACED AND TRUSSED AS NECESSARY. SAME FABRIC AS FENCE. SEE PLAN FOR WIDTH.

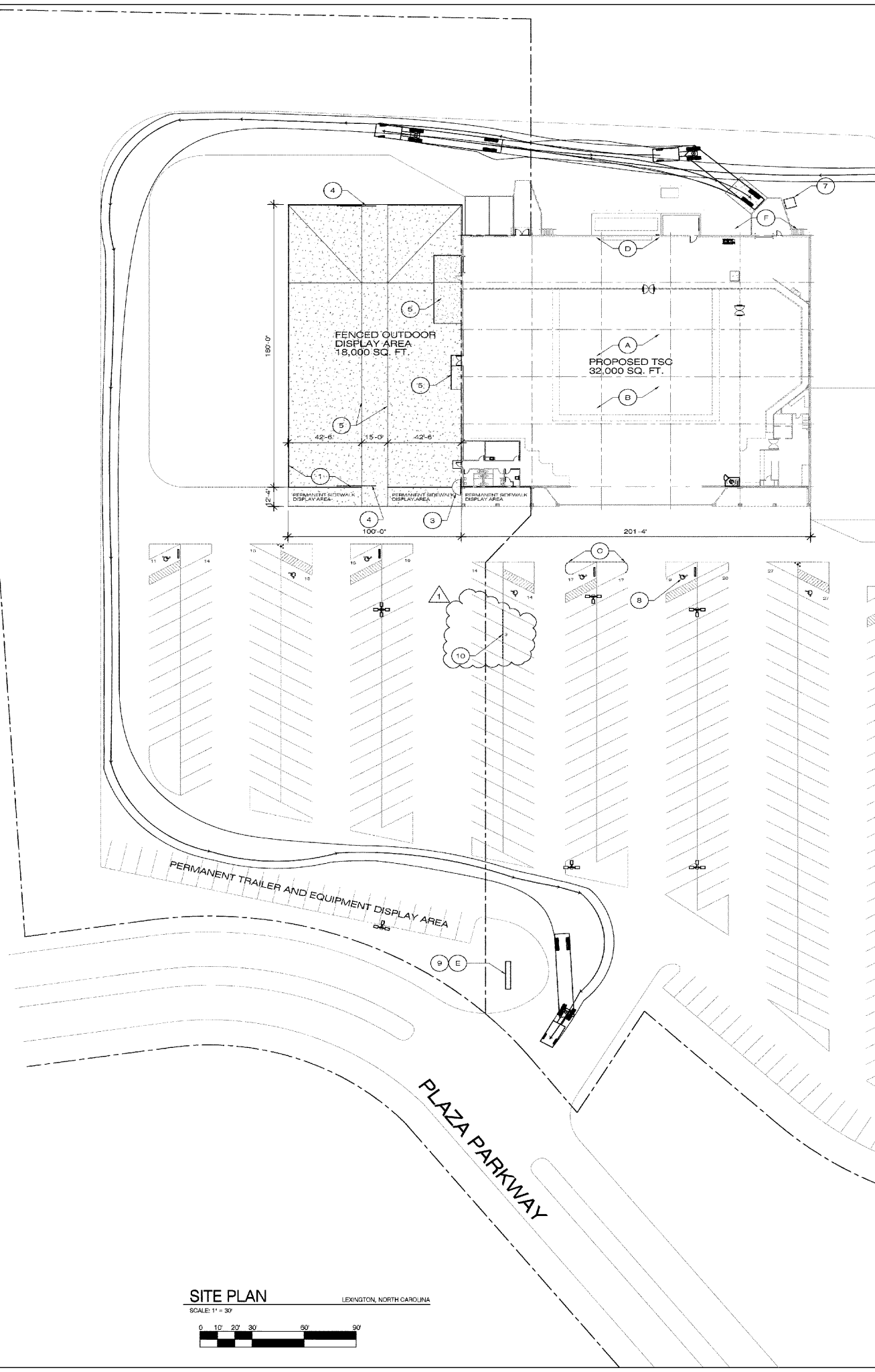
6A. ROLLING GATES: DESIGN AS PER THE MANUFACTURERS DESIGN STANDARDS. GATES SHALL BE MANUALLY OPERATED ROLLING CANTILEVERED W/ RUBBER WHEEL AT FRONT OF GATE, AND BLUOPER STOPS @ GATE ENDS. PROVIDE NYLON ROLLERS.

7. TENSION WIRE: 7 GA. COL. SPRING GALVANIZED TENSION WIRE ATTACHED TO BOTTOM OF FENCE FABRIC WITH 9 GA. ALUM. HOG RING SPACED 24" ON CENTER.

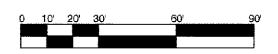
8. FITTINGS: HEAVY BRACED BAND AND CARRIAGE BOLT, PRESSED STEEL RAIL END, PRESSED STEEL LOOP CAP, PRESSED STEEL CAP, 1/4" X 3/4" TENSION BAR, HEAVY TENSION BAND AND CARRIAGE BOLT.

9. TIE WIRE: 8 1/4" 12 GA. STEEL TIE WIRE AND 6 1/2" 12 GA. STEEL WIRE SPACED 15" ON CENTER FOR LINE POST AND 24" ON CENTER FOR RAILS.

10. POST FOOTING: TRUCK POURED CONCRETE.



SITE PLAN  
LEXINGTON, NORTH CAROLINA  
SCALE: 1" = 30'



TSC

TRACTOR SUPPLY COMPANY

LEXINGTON  
NORTH  
CAROLINA

This drawing and the design shown is the property of the architect. The reproduction copying or use of this drawing without their written consent is prohibited and any infringement will be subject to legal action.

Job Number: 0704

Date: 05.07.2007

Revisions: 1 05.22.2007

Drawn By:

Checked By:

SITE PLAN

Sheet Number: AS-1