

**GENERAL NOTES**

- ALL PLUGMOLD TO BE MOUNTED HORIZONTALLY/LEVEL (E.G. TO PROVIDE PLUGMOLD AS MANUFACTURED BY WIREMOLD #2000GB SERIES, WITH RECEPTACLE ON 6" CENTERS, COLOR WHITE.)
- POWER & EMPTY 3/4" CONDUIT (FOR DATA AND VOICE CABLES) MUST BE INSTALLED FROM CEILING THROUGH ALL OF THE FIXTURE SUPPORTS TO PROVIDE ACCESS UNDER THE BASE DECK OF THE ENDCAP. (ELECTRICIAN MUST INSTALL FITTINGS ON TOP AND BOTTOM OF CONDUIT.)
- POWER & DATA CONDUIT TO BE DROPPED AT THE REAR FOR FIXTURES BELOW 8'-0" HIGH AND AT THE FRONT FOR FIXTURES 8'-0" HIGH AND ABOVE.

**MIS / DATA POWER NOTES - WHEEL WORLD MANAGER'S WORKSTATION**

- WHEEL WORLD MANAGER'S WORKSTATION WILL SIT ON FLOOR, FLUSH AGAINST ENDCAP. POWER CABLES AND DATA PATCH CORDS WILL PLUG IN UNDERNEATH THE BASE DECK OF ENDCAP.
- POWER NEEDS: DUPLEX IG AND DUPLEX CONVENIENCE POWER ARE NEEDED FOR THIS FIXTURE.
- POWER OUTLETS MUST BE INSTALLED UNDERNEATH THE BASE DECK OF THE ENDCAP.

**MIS / DATA POWER NOTES - PRICE CHECKERS**

- PRICE CHECKER TO BE MOUNTED ON FRONT ENDCAP, FACING FLOW OF TRAFFIC AROUND RACETRACK.
- SINGLE 110V IG STRAIGHT BLADE RECEPTACLE INSTALLED UNDER BASE DECK OF THE ENDCAP. (IT SHOULD NOT BE VISIBLE ON SALES FLOOR.)
- ALL PRICE CHECKERS ARE TO BE MOUNTED 5'-0" A.F.F. TO THE TOP OF THE UNIT.

**ELECTRICAL SYMBOLS**

**RECEPTACLES/PLUGMOLD**

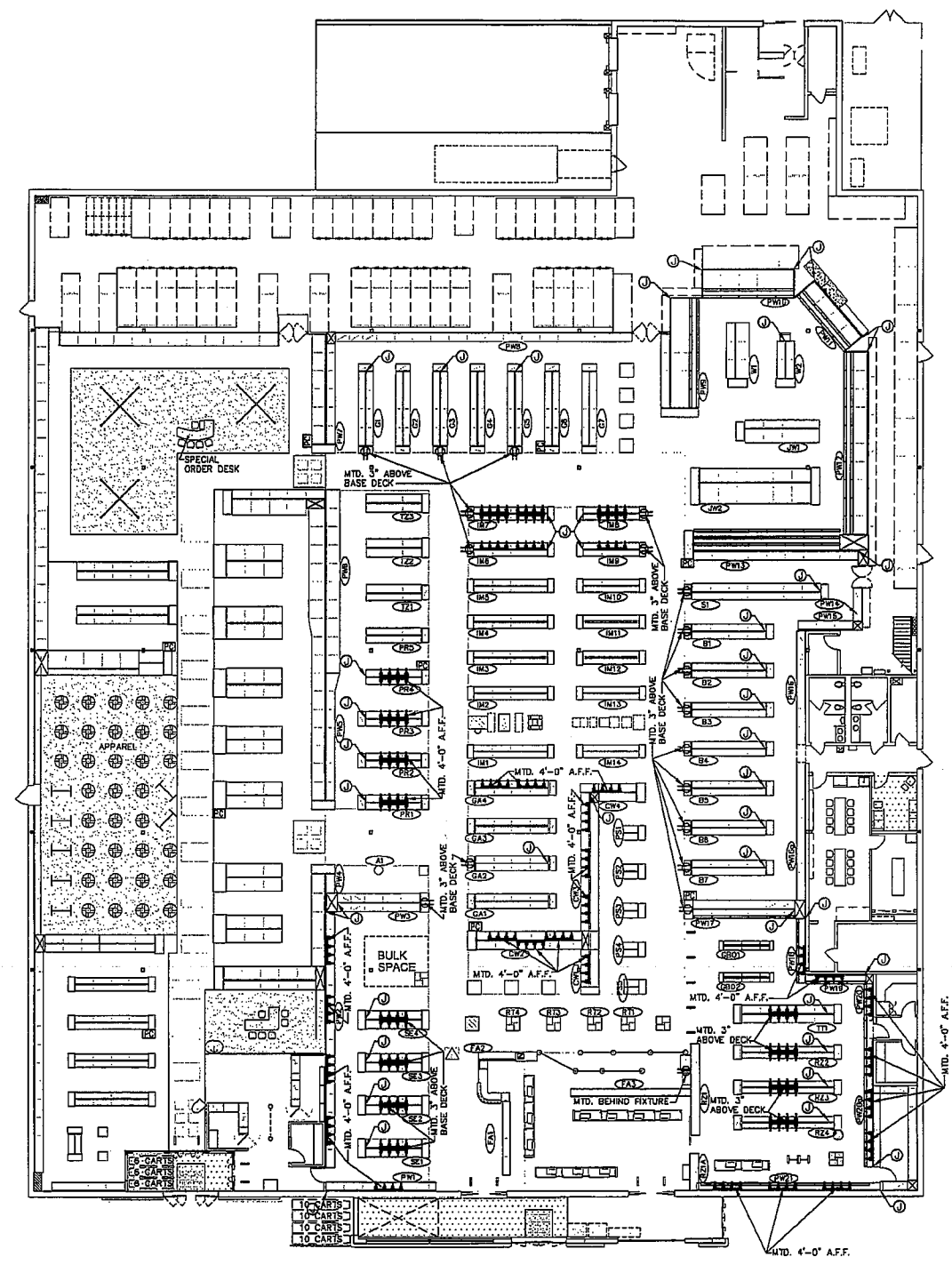
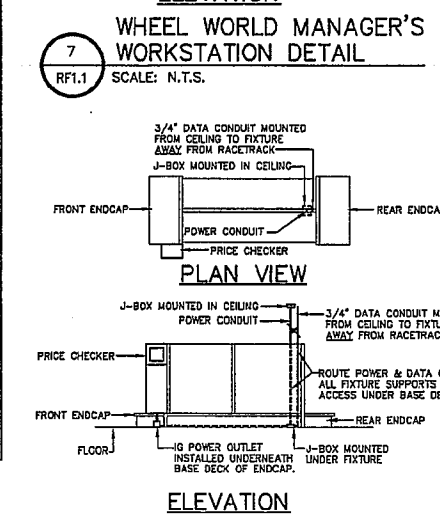
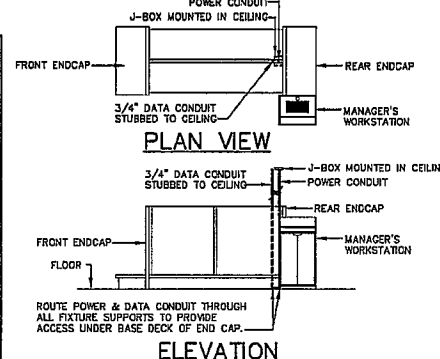
QUAD RECEPTACLE	3'-0" SECTION OF PLUGMOLD
GENERAL PURPOSE DUPLEX RECEPTACLE	4'-0" SECTION OF DOUBLE SIDED ELECTRIC SPANNER - OSI
	4'-0" SECTION OF SINGLE SIDED ELECTRIC SPANNER - OSI

**LIGHTING FIXTURES**

2 LEVELS OF "BIKE TYPE" IN-RACK LIGHTING AT BIKE RACK (4'-0" SECTIONS) - OSI	(2) LEVELS OF UNDER SHELF LIGHTING (4'-0" SECTIONS) - OSI	1 LEVEL OF VALANCE LIGHTING (4'-0" SECTIONS)
3 LEVELS OF "BIKE TYPE" IN-RACK LIGHTING AT BIKE RACK (4'-0" SECTIONS) - OSI	(2) LEVELS OF UNDER SHELF LIGHTING (3'-0" SECTIONS) - OSI	1 LEVEL OF VALANCE LIGHTING (3'-0" SECTIONS) (IF APPLICABLE)

**MISCELLANEOUS**

ELECTRONIC DISPLAY CASE, PRE-WIRED WITH LIGHTING AND WIP (REFER TO THIS PLAN FOR #, SIZE & LOCATION)	
JUNCTION BOX & LOCATION OF POWER DRCP	PRICE CHECKER



**1** IN-RACK LIGHTING & POWER PLAN  
RF1.1 SCALE: 1/16"=1'-0"

**Revisions**

No	Date	Description
03/20/07		ISSUED TO CONSULTANT FOR CD DEVELOPMENT- JL

BID DATE: ---  
 CAD NAME: ZR15RF1.1 PROJECT NO.: ---  
 DRAWN BY: JL CHECKED BY: T.O.  
 PROTOTYPE DESIGNATION: ---

**TOYS 'R' US**  
**BABIES 'R' US**

Store Support Center  
 One Geoffrey Way  
 Wayne, NJ 07470  
 (973) 617-3500

This drawing is the Exclusive Property of TOYS "R" US. The Information shown may not be used nor the Drawings Reproduced without permission of TOYS "R" US.

Location  
**AMARILLO TEXAS**  
 2403 SONCY

Drawing Title  
**IN RACK POWER & LIGHTING PLAN**

Scale \_\_\_\_\_ Date 03/20/2007

Sheet No. **RF1.1**

