

**LEGEND:**

**LIGHTING FIXTURES:**

UPPERCASE LETTER ADJACENT TO FIXTURE DENOTES DESIGNATION PER THE LIGHTING FIXTURE SCHEDULE. LOWER CASE LETTER DENOTES SWITCH/LEG. THE RESPECTIVE SWITCH WILL HAVE THE SAME DESIGNATION. NUMERAL DENOTES BRANCH CIRCUIT CONNECTION. FIXTURE TYPE ENDING WITH 'D' SUFFIX INDICATES FIXTURE THAT REQUIRES DIMMING BALLAST. (EXAMPLE FIXTURE TYPE 'A3D') REFER TO THE FIXTURE SCHEDULE FOR SPECIFIC FIXTURE INFORMATION. EMERGENCY FIXTURES SHALL HAVE FACTORY INSTALLED INTERNAL BATTERIES, PER SPECIFICATIONS. NL SUFFIX ADJACENT TO FIXTURE TYPE DENOTES NIGHT LIGHT. DO NOT SWITCH THESE FIXTURES.

NON-EMERGENCY EMERGENCY

- LIGHTING FIXTURE: LINEAR FLUORESCENT
- LIGHTING FIXTURE: FLUORESCENT
- DOWNLIGHT/SCENCE FIXTURE
- EXIT/AREA OF REFUGE LIGHT: UNIVERSAL MTD.

**WIRING DEVICES:**

NUMERAL ADJACENT TO DEVICE DENOTES BRANCH CIRCUIT CONNECTION. SUBSCRIPTS ADJACENT TO DEVICES INDICATE:

- C MOUNT ABOVE COUNTERTOP OR BASKSPASH, 9" ABOVE WORK SURFACE TO CENTER.
- XX" MOUNT DEVICE AT HEIGHT INDICATED.
- WP PROVIDE WEATHER-PROOF COVER.
- MP DEVICE INSTALLED IN MODULAR FURNITURE BASE
- TV MOUNT DEVICE AT 88" AFF, ADJACENT TO TV RECEPTACLE
- CCTV MOUNT DEVICE IN WALL AT 9'-0" AFF OR 8' BELOW CEILING, WHICHEVER IS LOWER. MOUNT DEVICE IN CEILING TILE, WHERE CAMERA IS SHOWN CEILING MOUNTED.

**RECEPTACLES:**

NOMINAL MOUNTING HEIGHT OF RECEPTACLES SHALL BE 18" TO CENTER, UNLESS OTHERWISE SPECIFIED ABOVE. FOR RECEPTACLES, LOWER CASE LETTER INDICATES SWITCH/LEG CONNECTION. THE RESPECTIVE FIXTURE(S) WILL HAVE THE SAME DESIGNATION.

- RECEPTACLE: DUPLEX
- RECEPTACLE: GROUND-FAULT-INTERRUPTING-TYPE
- RECEPTACLE: QUADRUPLX

**SWITCHES:**

MOUNTING HEIGHT OF SWITCHES SHALL BE 48" NOMINAL, ADJUSTED IN THE SAME MANNER AS SPECIFIED ABOVE, FOR RECEPTACLES. LOWER CASE LETTER INDICATES SWITCH/LEG CONNECTION. THE RESPECTIVE FIXTURE(S) WILL HAVE THE SAME DESIGNATION.

- S SWITCH: SINGLE-POLE
- S3 SWITCH: THREE-WAY TYPE
- SK SWITCH: KEY-OPERATED
- SO SWITCH: OVERRIDE
- SWITCH: OCCUPANCY SENSOR, CEILING MOUNTED, DUAL TECHNOLOGY
- SWITCH: OCCUPANCY SENSOR

**ELECTRICAL EQUIPMENT:**

REFER TO ONE-LINE DIAGRAM AND EQUIPMENT CONNECTION SCHEDULE FOR LOAD DATA USED AS THE BASIS OF DESIGN AND REQUIRED CONNECTIONS. VERIFY LOAD AND LOCATION WITH EQUIPMENT PURCHASED AND INSTALLER.

- FAN LOAD
- SWITCH: MOTOR RATED, WITHOUT OVERLOAD PROTECTION
- NON-FUSIBLE DISCONNECT SWITCH
- CIRCUIT BREAKER, INDIVIDUALLY ENCLOSED
- PANELBOARD: LIGHTING-TYPE, SURFACE MOUNTED
- EQUIPMENT AS NOTED, SEE ABBREVIATION LIST, THIS SHEET

**ROUGH-IN FOR LOW VOLTAGE SYSTEMS:**

THE CONTRACTOR SHALL PROVIDE ROUGH-IN FOR ALL DEVICES AND WIRING. PROVIDE 4" SQUARE BOX 2 1/2" DEEP BOX WITH 1 GANG PLASTER RING. PROVIDE (1)-1" STUB-UP TO THE NEAREST ACCESSIBLE CEILING FROM EACH OUTLET BOX. OUTLET BOX SHALL BE INSTALLED AT THE SAME HEIGHT AS CORRESPONDING POWER OUTLETS, UNLESS OTHERWISE SPECIFIED.

- WALL MTD, TELECOMMUNICATION JUNCTION BOX AND CONDUIT ROUGH-IN TO NEAREST ACCESSIBLE CEILING
- WALL MTD, CATV OUTLET, WITH ONE TYPE 'F' CONNECTOR, MTD, AT 18" AFF, UNLESS OTHERWISE SPECIFIED

**MISCELLANEOUS COMPONENTS:**

- JUNCTION BOX: MOUNTED ABOVE CEILING
- JUNCTION BOX: WALL MOUNTED
- COMMUNICATIONS BACKBOARD: 3/4" THICK TYPE AC PLYWOOD, 8' HIGH, LENGTH AS INDICATED
- CONNECTION TO GROUNDING ELECTRODE

**BRANCH CIRCUITS:**

CONDUCTOR COUNTS ARE SHOWN ON HOMERUNS ONLY. CONTRACTOR SHALL DETERMINE COUNTS FOR INTERMEDIATE RUNS BASED ON THE MANNER IN WHICH CIRCUIT ELEMENTS ARE CONNECTED. REFER TO SPECIFICATION SECTIONS 16120, 16127, & 16128 FOR SPECIAL REQUIREMENTS.

- BRANCH CIRCUIT: CONCEALED
- BRANCH CIRCUIT: CONCEALED IN FLOOR SLAB
- BRANCH CIRCUIT: EXPOSED
- 'HOMERUN' TO PANEL: HASH MARKS INDICATE QUAN. OF NO. 12 AWG CONDUCTORS, IF MORE THAN TWO, LETTERS AND NUMERALS INDICATE PANEL & CIRCUIT NO.

**FIRE ALARM:**

- FIRE ALARM MANUAL PULL-STATION: WALL MTD, 48" AFF
- FIRE ALARM ANNUNCIATOR, AUDIBLE/VISIBLE-TYPE: WALL MTD, 80" AFF OR 6' BELOW CEILING, WHICHEVER IS LOWER
- FIRE ALARM ANNUNCIATOR, VISIBLE-ONLY-TYPE: WALL MTD, 80" AFF OR 6' BELOW CEILING, WHICHEVER IS LOWER
- SMOKE DETECTOR: CEILING MOUNTED
- SMOKE DETECTOR: DUCT-TYPE

**ABBREVIATIONS:**

- A AMPERES
- AFF ABOVE FINISHED FLOOR
- AIC AMPERAGE INTERRUPT CAPABILITY
- C CONDUIT
- EF EXHAUST FAN
- FAAP FIRE ALARM ANNUNCIATOR PANEL
- FACP FIRE ALARM CONTROL PANEL
- G GROUND
- GFI GROUND-FAULT INTERRUPTING
- HP HORSE POWER
- MB MAIN BREAKER
- MCA MINIMUM CIRCUIT AMPS
- MIN MINIMUM
- MOPP MAXIMUM OVERCURRENT PROTECTION
- No. NUMBER
- NEC NATIONAL ELECTRIC CODE
- RHP ROOFTOP HEAT PUMP
- TVSS TRANSIENT VOLTAGE SURGE SUPPRESSION
- TYP TYPICAL
- UNO UNLESS NOTED OTHERWISE
- V VOLTAGE
- VU VENTILATION UNIT
- W WATTAGE
- W/ WITH
- WH WATER HEATER

**GENERAL NOTES:**

- WHERE COMPLETE BRANCH CIRCUIT WIRING IS NOT SHOWN, PROVIDE ACCORDING TO HOMERUNS SHOWN AND CORRESPONDING CIRCUIT NUMBERS ADJACENT TO THE DEVICE OR FIXTURE. REFER TO THE SPECIFICATIONS FOR WIRING METHODS. BRANCH CIRCUIT RATINGS SHALL BE BASED ON OVERCURRENT DEVICE RATINGS SHOWN IN THE PANEL SCHEDULES AND THE FEEDER SCHEDULES.
- REFER TO THE ELECTRICAL PANELBOARD SCHEDULES AND EQUIPMENT RATINGS & CONNECTIONS SCHEDULE FOR VOLTAGE, BRANCH CIRCUIT REQUIREMENTS, BREAKERS SIZES AND OTHER RELATED ELECTRICAL EQUIPMENT TO BE PROVIDED AND/OR INSTALLED BY THE ELECTRICAL CONTRACTOR.

**ELECTRICAL SPECIFICATIONS**

**16000 ELECTRICAL SYSTEM**

**1. GENERAL PROVISIONS:**

APPLICABLE PROVISIONS OF THE STATE AND LOCAL CODES AND OF THE NATIONAL ELECTRICAL CODE (NFPA NO. 70), 2005 EDITION, ARE HEREBY IMPOSED ON A GENERAL BASIS FOR ELECTRICAL WORK.

PROVIDE ALL LABOR, MATERIALS, EQUIPMENT AND SUPERVISION TO CONSTRUCT A COMPLETE AND OPERABLE ELECTRICAL SYSTEM. ALL MATERIALS AND EQUIPMENT USED SHALL BE NEW, UNDAMAGED AND FREE FROM ANY DEFECTS.

**2. MATERIALS:**

ALL MATERIALS SHALL CONFORM TO U.L. & NEMA REQUIREMENTS AND SHALL BE AS SPECIFIED OR "APPROVED EQUAL" BY THE ENGINEER.

A. RACEWAY SYSTEMS: ALL CONDUITS AND RACEWAYS SHALL BE INSTALLED CONCEALED IN FINISHED SPACES, ROUTE PARALLEL AND PERPENDICULAR TO THE STRUCTURE AND SUPPORT AS REQUIRED BY THE NEC. FOR ALL INTERIOR BRANCH CIRCUITS AND FEEDER RACEWAYS IN DRY LOCATIONS UTILIZE EMT OR HCF-90 CABLING, EXCEPT FOR FEEDERS LARGER THAN 1/0 SHALL UTILIZE EMT. FOR ALL EXTERIOR OR WET LOCATED BRANCH CIRCUIT OR FEEDER RACEWAYS UTILIZE RGS OR IMC CONDUIT. SUPPORT RACEWAY SYSTEM USING WOOD SCREWS TO WOOD; BY TOSSEL BOLTS ON HOLLOW MASONRY UNITS; BY CONCRETE INSERTS OR EXPANSION BOLTS ON CONCRETE OR BRICK; BY MACHINE SCREWS, WELDED THREADED STUDS, OR SPRING TENSION CLAMPS ON STEEL WORK. CONDUIT SUPPORTS SHALL BE TWO-HOLE STRAPS, WALL BRACKETS, HANGERS OR CEILING TRAPEZE.

B. BOXES: PROVIDE GALVANIZED STEEL OUTLET BOXES WITH STAMPED KNOCKOUTS FOR INTERIOR DRY LOCATIONS. PROVIDE CAST ALUMINUM BELL TYPE FOR ALL EXTERIOR WET LOCATIONS. INTERIOR FLUSH BOXES SHALL BE 4" SQUARE BY 1-1/4" DEEP.

C. WIRE AND CABLES: CONDUCTORS SHALL BE COPPER, TYPE THWN/THHN. CONDUCTORS SHALL BE COLOR CODED.

D. WIRING DEVICES: PROVIDE WIRING DEVICES PRODUCED BY ONE OF THE FOLLOWING MANUFACTURERS: GE, HUBBEL, LEVITON, LUTRON, OR PASS & SEYMOUR. RECEPTACLES SHALL BE SPECIFICATION GRADE HEAVY-DUTY TYPE RECEPTACLES 2-POLE, 3-WIRE GROUNDING, SIDE WIRING, NEMA 5-20R, 20-AMP, 125 VOLTS. LIGHT SWITCHES SHALL BE RATED 20 AMPS 120V.

E. DISCONNECTS: PROVIDE DISCONNECTS PRODUCED BY ONE OF THE FOLLOWING MANUFACTURERS: GE, SQUARE D, WESTINGHOUSE/CUTLER HAMMER, OR SIEMENS. DISCONNECTS SHALL BE RATED 800V, HEAVY DUTY TYPE, NEMA TYPE AS INDICATED. LABEL ALL DISCONNECTS AND SWITCHES.

F. GROUNDING: ELECTRICAL GROUNDING SHALL COMPLY WITH ARTICLE 250 OF THE NEC. PROVIDE EQUIPMENT GROUNDING CONDUCTOR IN ALL BRANCH CIRCUIT AND FEEDER RACEWAYS, SIZED IN ACCORDANCE WITH ARTICLE 250 OF NFPA 70. BOND EQUIPMENT GROUNDING CONDUCTORS TO ALL OUTLET BOXES WITH WITH A SCREW USED FOR NO OTHER PURPOSE. CONNECT EQUIPMENT GROUNDING CONDUCTOR TO DEVICE GROUNDING TERMINALS. PROVIDE ISOLATED GROUNDING CONDUCTOR AS WELL AS EQUIPMENT GROUNDING CONDUCTOR FOR ALL BRANCH CIRCUITS SERVING ISOLATED GROUND RECEPTACLES.

G. LIGHTING FIXTURES: PROVIDE LIGHTING FIXTURES AS INDICATED ON THE FIXTURE SCHEDULE. ALL FLUORESCENT FIXTURES SHALL BE EQUIPPED WITH ELECTRONIC BALLAST RATED FOR FULL LIGHT OUTPUT. BALLAST SHALL BE WIRED FOR PARALLEL LAMP OPERATION. ACCEPTABLE BALLAST MANUFACTURERS ARE MAGNETEK TRIAD SERIES, MOTOROLA INSTANT START, AND OSRAM QUICKTRONIC. EMERGENCY FIXTURES, REGARDLESS OF CATALOG NUMBER, SHALL BE PROVIDED WITH 800MHZ EMERGENCY BATTERY PACKS. THE BATTERY PACK SHALL BE CAPABLE OF OPERATING 2 LAMPS FOR 90 MINUTES AT 1100 LUMENS. BATTERY PACKS SHALL BE FACTORY INSTALLED.

H. PANELBOARDS: PROVIDE PANELBOARDS PRODUCED BY ONE OF THE FOLLOWING MANUFACTURERS: GE, SQUARE D, WESTINGHOUSE/CUTLER HAMMER, OR SIEMENS. LIGHTING AND APPLIANCE TYPE PANELBOARDS SHALL BE A MINIMUM OF 20" WIDE AND BE EQUIPPED WITH WITH COPPER BUS BARS, FULL SIZE NEUTRAL BAR AND A GROUND BUS. CIRCUIT BREAKERS SHALL BE BOLT-IN TYPE, HEAVY DUTY, QUICK-MAKE, QUICK-BREAK MOULDED CASE CIRCUIT BREAKERS. MULTI-POLE BREAKERS SHALL BE COMMON TRIP WITH A SINGLE HANDLE. PROVISIONS FOR FUTURE BREAKERS SHALL BE FULLY BUSSED COMPLETE WITH ALL NECESSARY MOUNTING HARDWARE. PROVIDE PLASTIC LAMINATED NAME-PLATE INDICATING PANEL ID, DATE INSTALLED, AND SHORT CIRCUIT RATING. CIRCUIT BREAKERS TO BE INSTALLED IN EXISTING PANELBOARDS SHALL MATCH EXISTING TYPE CIRCUIT BREAKERS. PROVIDE TYPED SCHEDULES FOR ALL PANELBOARDS.

**16722 FIRE ALARM SYSTEM**

**1. GENERAL PROVISIONS:**

APPLICABLE PROVISIONS OF THE STATE AND LOCAL CODES AND OF NFPA NO. 70 AND 72, 2005 EDITIONS, ARE HEREBY IMPOSED ON A GENERAL BASIS FOR WORK ASSOCIATED WITH THE FIRE ALARM SYSTEM.

PROVIDE ALL LABOR, MATERIALS, EQUIPMENT AND SUPERVISION TO CONSTRUCT A COMPLETE AND OPERABLE FIRE ALARM SYSTEM. ALL MATERIALS AND EQUIPMENT USED SHALL BE NEW, UNDAMAGED AND FREE FROM ANY DEFECTS.

**2. MATERIALS:**

ALL MATERIALS SHALL CONFORM TO U.L. & NEMA REQUIREMENTS AND SHALL BE AS SPECIFIED OR "APPROVED EQUAL" BY THE ENGINEER.

A. PROVIDE INTELLIGENT, ADDRESSABLE, ANALOG FIRE ALARM SYSTEM. SYSTEM SHALL INCLUDE:

- MANUAL STATIONS AND AUTOMATIC DETECTION DEVICES.
- AUDIBLE/VISIBLE NOTIFICATION APPLIANCES.
- INTERFACE TO ELEVATOR CONTROLLER AND ASSOCIATED CIRCUIT BREAKERS.
- FIRE SPRINKLER SYSTEMS.
- TELEPHONIC DIALER NOTIFICATION.

B. ALL WIRING SHALL BE INSTALLED IN RIGID METALLIC CONDUIT SYSTEM.

**3. SUBMITTALS: SUBMIT TO THE ARCHITECT FOR APPROVAL BEFORE BEGINNING CONSTRUCTION THE FOLLOWING:**

- A. DATA SHEETS ON ALL ITEMS LISTED ABOVE.

**LIGHTING FIXTURE SCHEDULE**

TYPE	DESCRIPTION	MANUFACTURER/SERIES	REFLECTOR/DIFFUSER	FINISH	MOUNTING	LAMPS	NOTES
A1	2'x4' LENSED TROFFER	METALUX 26CB SERIES LITHONIA 25PB SERIES COLUMBIA 57B SERIES DAYBRITE 25P SERIES LIGHTOLIER XR SERIES	PRISMATIC ACRYLIC LENS (0.125" THICKNESS, MIN.) FLUSH ALUMINUM DOOR W/ MITERED CORNERS	WHITE, ALL PARTS PAINTED AFTER FABRICATION	RECESSED CEILING	2-F32TB	W/6 LENS CLIPS
A4	2'x2'		PROVIDE SPRING LOADED LATCHES WITH DOOR			2-FB32TB	W/4 LENS CLIPS
E2	4' LONG STANDARD STRIPS	METALUX SS SERIES LITHONIA C SERIES COLUMBIA CS SERIES DAYBRITE T SERIES LIGHTOLIER SW SERIES	WITH PROTECTIVE SLEEVES AND END CAPS.	WHITE (HOUSING), ALL PARTS PAINTED AFTER FABRICATION	SURFACE CEILING	2-F32TB	
M1	HIGH BAY FLUORESCENT GYM LIGHT	VANTAGE LUMINAIRES 40VB SPORTLIGHT INC. LX800 SERIES SOLERA SSPB SERIES DAYBRITE HBC SERIES WIDE-LIGHT PFCF SERIES	ACRYLIC REFLECTOR, 22"x4" WITH DROP LENS & ELECTRONIC BALLASTS	WHITE	SEE TYPICAL INSTALLATION DETAIL 2/E002	8-32W TTT	
N1	WALL PACK SURFACE MOUNT VANDAL RESISTANT	LUMARK IP QUARTER SPHERE LSI CHALLENGER WALL SCONCE ECLIPSE VIENNA SERIES	HEAT & SHOCK RESISTANT BOROSILICATE GLASS REFRACTOR	HOUSING AND EXPOSED PARTS - DARK BRONZE	WALL SURFACE MOUNTING HEIGHT 9'-4" AFF	1-42W TTT	INTEGRAL PHOTO CONTROL
XA	SINGLE FACE EXIT	LIGHTGUARD DX SERIES LITHONIA LE SERIES BEGHELLI LCL SERIES DUAL LITE DVD SERIES SURE-LITE CX SERIES	RED LETTERS "EXIT", NICKEL CADMIUM BATTERY.	STENCIL FACE BRUSHED ALUMINUM	UNIVERSAL	LED	
XB	DOUBLE FACE EXIT						

DOUGLAS A. NEAL ARCHITECT, INC.

ARCHITECTURE MASTER PLANNING CONSULTING

907 ROSE COTTAGE ROAD ST. SIMONS ISLAND, GA 31522

PHONE: (912) 634-6585 FAX: (912) 634-6586

COPYRIGHT 2007

ARCHITECT SEAL

ENGINEER SEAL



PROJECT NAME  
**TEMPORARY MINIMUM SECURITY DETENTION FACILITY**

DRAWING TITLE

**ELECTRICAL LEGEND**

DATE

JULY 12, 2007

PROJECT NUMBER

0703

CADD FILE NUMBER

20071045-E001.dwg

**E001**



DOUGLAS A. NEAL  
ARCHITECT, INC.  
ARCHITECTURE  
MASTER PLANNING  
CONSULTING  
907 ROSE COTTAGE ROAD  
ST. SIMONS ISLAND, GA  
31522  
PHONE: (912) 634-0586  
FAX: (912) 634-0586

COPYRIGHT 2007

ARCHITECT SEAL

ENGINEER SEAL



PROJECT NAME  
TEMPORARY  
MINIMUM SECURITY  
DETENTION  
FACILITY

DRAWING TITLE

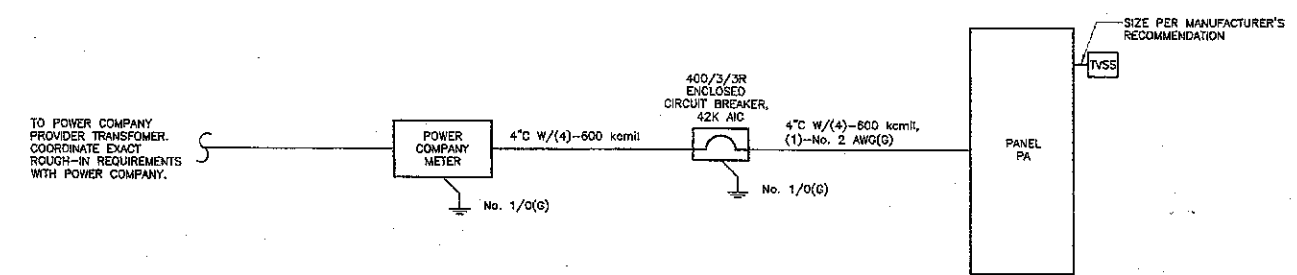
ELECTRICAL  
ONE LINE  
AND DETAILS

DATE  
JULY 12, 2007

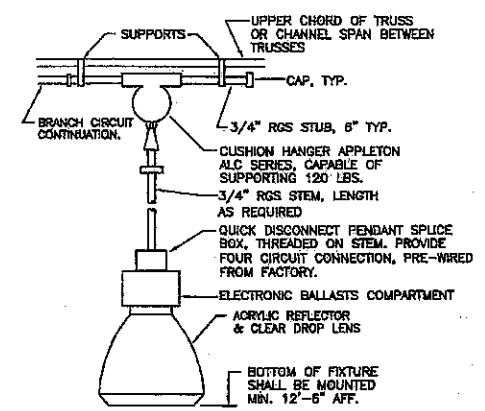
PROJECT NUMBER  
0703

CADD FILE NUMBER  
20071045-E002.dwg

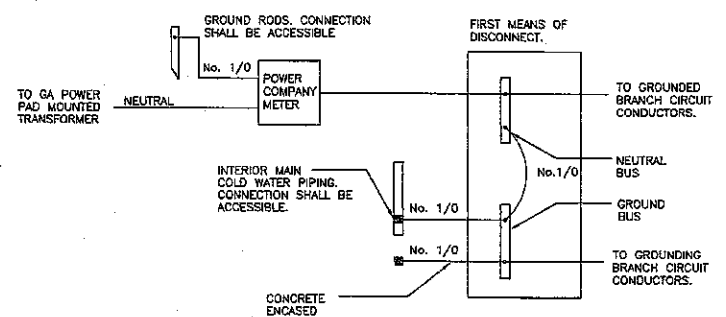
E002



1 PARTIAL ONE LINE DIAGRAM  
E002 NOT TO SCALE



2 FIXTURE TYPE M1 MOUNTING DETAIL  
E002 SCALE: NOT TO SCALE



3 GROUNDING DETAILS  
E002 SCALE: NOT TO SCALE

ITEM	VOLT	PH	AMPS	HP	KW	TTL	CONTROL / DISCONNECT				CIRCUIT REQUIREMENTS
							MCA	MOCP	DIV 15	DIV 16	
RHP-1	208	3	28.4	7.5	41.2	56.1	600	-	600/3R	1" C. W/3-No. 6 AWG, (1)-No. 10 AWG	
RHP-2	208	3	28.4	7.5	41.2	56.1	600	-	600/3R	1" C. W/3-No. 6 AWG, (1)-No. 10 AWG	
RHP-3	208	3	28.4	7.5	41.2	56.1	600	-	600/3R	1" C. W/3-No. 6 AWG, (1)-No. 10 AWG	
RHP-4	208	3	28.4	7.5	41.2	56.1	600	-	600/3R	1" C. W/3-No. 6 AWG, (1)-No. 10 AWG	
RHP-5	208	3	28.4	7.5	41.2	56.1	600	-	600/3R	1" C. W/3-No. 6 AWG, (1)-No. 10 AWG	
VU-1	208	3	8.8	7.1	30.3	38.0	400	-	600/3R	3/4" C. W/3-No. 8 AWG, (1)-No. 10 AWG	
WH-1	200	1	1.5	7.2	8.0	35/2	-	30/21	-	-	
BE1-4	120	1	1.5	-	1.5	-	20/1	YES	-	CONNECT TO LIGHT CIRCUIT IN ROOM	

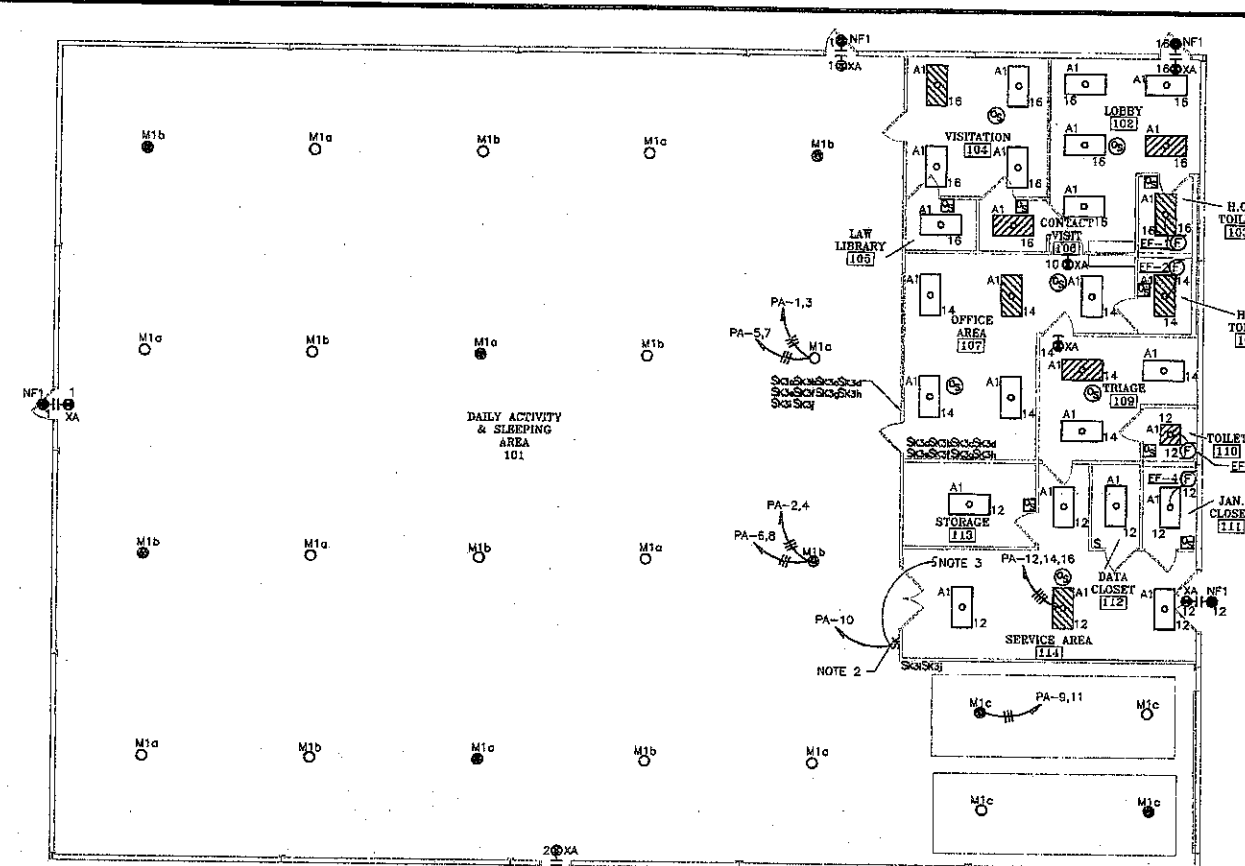
NOTES:  
THE DESIGN IS BASED ON SINGLE POINT CONNECTIONS TO ALL EQUIPMENT, UNLESS NOTED OTHERWISE.

PANELBOARD SCHEDULE PA											
NAME:		400A MLC		MTG:		SURFACE					
VOLTAGE:		120/208		PHASE: 3		WIRE: 4		A.I.C.: 42,000			
NO	TRIP POLE	DESIGNATION	V-A	A	B	C	V-A	DESIGNATION	POLE TRIP NO		
1	20	1 LIGHTING 101	650	1,500			750	LIGHTING 101	1	20	2
2	20	1 LIGHTING 101	700		1,400		700	LIGHTING 101	1	20	4
5	20	1 LIGHTING 101	700			1,400	700	LIGHTING 101	1	20	6
7	20	1 LIGHTING 101	700		1,400		700	LIGHTING 101	1	20	8
9	20	1 LIGHTING 101	840		1,440		900	LIGHTING MEZZANINE	1	20	10
11	20	1 LIGHTING 101	260			1,300	1,600	LIGHTING OFFICE	1	20	12
13	20	1 RECEPTACLES	1,250	2,100			875	LIGHTING OFFICE	1	20	14
15	20	1 RECEPTACLES	1,250		2,410		1,180	LIGHTING OFFICE	1	20	16
17	20	1 RECEPTACLES	1,250			2,160	900	FACP	1	20	18
19	20	1 RECEPTACLES	1,050	1,580			900	RECEPTACLE DATA	1	20	20
21	20	1 RECEPTACLES	600		1,800		800	RECEPTACLE DATA	1	20	22
23	20	1 RECEPTACLES	1,050			2,160	1,080	RECEPTACLES	1	20	24
25	20	1 MICROWAVE	1,250	2,150			600	RECEPTACLES	1	20	26
27	20	1 TV RECEPTACLE	300		840		540	RECEPTACLES	1	20	28
29	20	1 SPARE				16,16,20	1,500	RECP PORTA SHOWER	1	20	30
31	20	1 SPARE			1,500		1,500	RECP PORTA POTTY	1	20	32
33	20	1 SPARE						SPARE	1	20	34
35	20	1 SPARE						SPARE	1	20	36
37	3	3 TV/SS						SPARE	1	20	38
								SPARE	1	20	40
								SPARE	1	20	42
43	20	1 SPARE						SPARE	1	20	44
45	20	1 SPARE						SPARE	1	20	46
47	20	1 SPARE						SPARE	1	20	48
49	20	1 SPARE						SPARE	1	20	50
51	20	1 SPARE						SPARE	1	20	52
53	20	1 SPARE						SPARE	1	20	54
55	20	1 SPARE						SPARE	1	20	56
57	20	1 SPARE						SPARE	1	20	58
59	20	1 SPARE						SPARE	1	20	60
61		WH-1	780	750				SPARE	1	20	62
			780		750			SPARE	1	20	64
63								SPARE	1	20	66
67	3	RHP-1	4,950	8,900			4,950	RHP-2	3	20	68
			4,950		8,900		4,950				70
			4,950			8,900	4,950				72
73	3	RHP-3	4,950	8,900			4,950	RHP-4	3	20	74
			4,950		8,900		4,950				76
			4,950			8,900	4,950				78
79	3	RHP-5	4,950	8,900			4,950	VU-1	3	20	80
			4,950		8,900		4,950				82
			4,950			8,900	4,950				84
CONNECTED			30,900	37,031	26,441	TTL:	112,278				
DEMAND			31,645	29,625	28,353	TTL:	99,623				

GENERAL: PANEL SHALL BE 2-SECTION TYPE. DIVIDE CIRCUITS EVENLY BETWEEN THE TWO SECTIONS. BOTH SECTIONS SHALL BE THE SAME PHYSICAL SIZE.

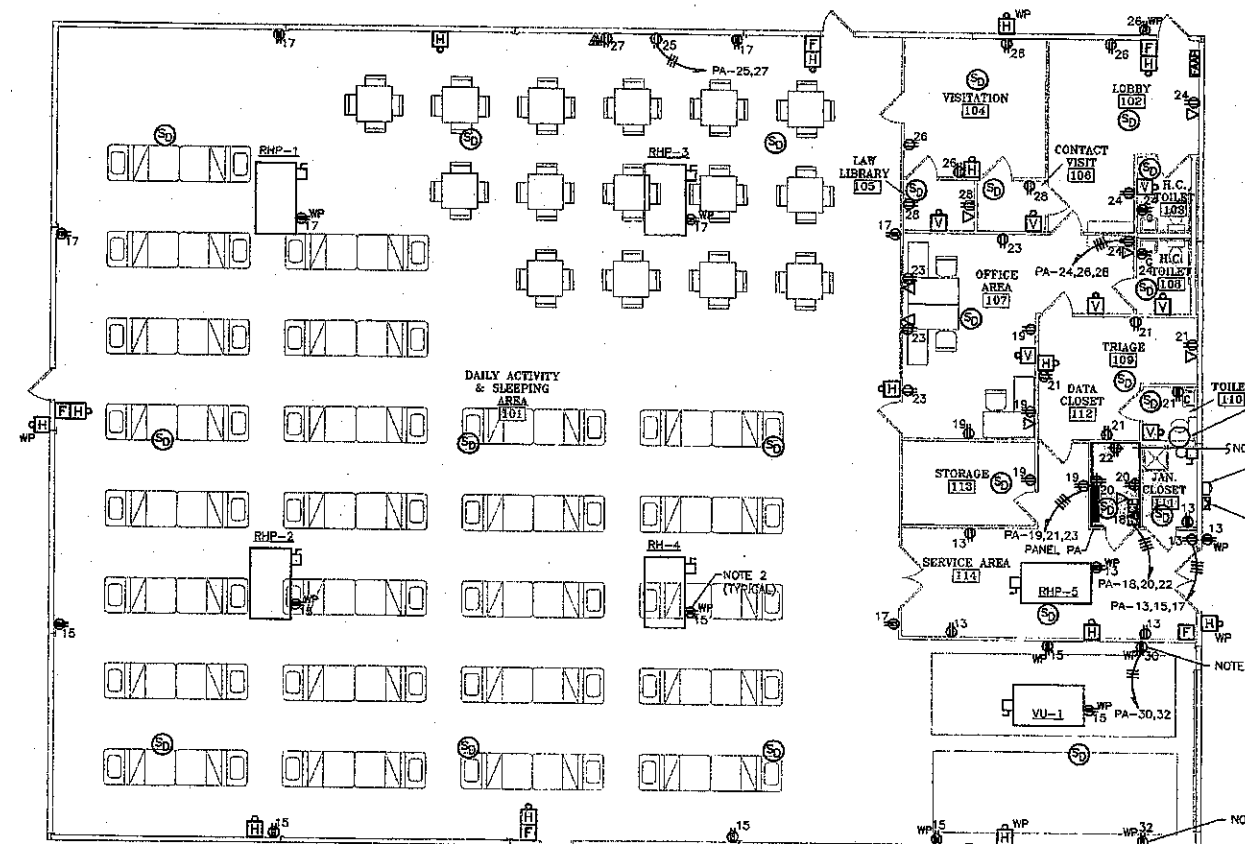
\*\*\* BREAKER RATINGS SHALL MATCH MANUFACTURER'S RECOMMENDATION.





1 ELECTRICAL PLANS  
E101 SCALE: 1/8" = 1'-0"

- NOTES:**
- CONNECT ALL M1 FIXTURES AS FOLLOWS:  
 M1a FIXTURES  
 1st PAIR OF LAMPS - CKT PA-1; S3a  
 2nd PAIR OF LAMPS - CKT PA-3; S3b  
 3rd PAIR OF LAMPS - CKT PA-5; S3c  
 4th PAIR OF LAMPS - CKT PA-7; S3d  
 M1b FIXTURES  
 1st PAIR OF LAMPS - CKT PA-2; S3f  
 2nd PAIR OF LAMPS - CKT PA-4; S3g  
 3rd PAIR OF LAMPS - CKT PA-6; S3h  
 4th PAIR OF LAMPS - CKT PA-8; S3i  
 M1c FIXTURES  
 1st, 2nd, 3rd PAIR OF LAMPS - CKT PA-9; S3j  
 4th PAIR OF LAMPS - CKT PA-11; S3k  
 PROVIDE SEPARATE RUNS OF CONDUIT FOR EVERY TWO CIRCUITS (i.e. COMBINE PA-1,3 AND PA-5,7.) PULL UNSWITCHED PHASE CONDUCTORS TO EMERGENCY BALLAST FIXTURES. GROUP EACH SET OF SWITCHES UNDER A COMMON DEVICE PLATE.
  - SWITCH SHALL CONTROL LIGHT FIXTURES INSTALLED ON THE MEZZANINE ABOVE THE OFFICE AREA.
  - PROVIDE AND INSTALL 8 TYPE E2 FIXTURES ON THE MEZZANINE LOCATED ABOVE THE OFFICE AREA. FIXTURES SHALL BE EVENLY SPACED TO PROVIDE UNIFORM LIGHTING.



2 POWER PLAN  
E101 SCALE: 1/8" = 1'-0"

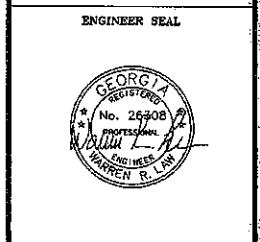
- NOTES:**
- EXTEND (2) - 4" CONDUITS TO THE TELEPHONE SERVICE LOCATION. COORDINATE EXACT ROUGH-IN LOCATION WITH TELEPHONE SERVICE PROVIDER.
  - PROVIDE SERVICE RECEPTACLE AT EACH PIECE OF ROOF TOP HVAC EQUIPMENT.
  - RECEPTACLE IS DEDICATED FOR PORTABLE EQUIPMENT.

DOUGLAS A. NEAL  
ARCHITECT, INC.

ARCHITECTURE  
MASTER PLANNING  
CONSULTING  
907 ROSE COTTAGE ROAD  
ST. SIMONS ISLAND, GA  
31522  
PHONE: (912) 534-8585  
FAX: (912) 634-8586

COPYRIGHT 2007  
ARCHITECT SEAL

ENGINEER SEAL



PROJECT NAME  
TEMPORARY  
MINIMUM SECURITY  
DETENTION  
FACILITY

DRAWING TITLE

ELECTRICAL  
PLANS

DATE

JULY 12, 2007

PROJECT NUMBER

0703

CADD FILE NUMBER

20071045-E101.dwg

E101

