

DOUGLAS A. NEAL  
ARCHITECT, INC.

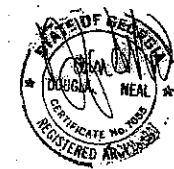
ARCHITECTURE  
MASTER PLANNING  
CONSULTING

907 ROSE COTTAGE ROAD  
ST. SIMONS ISLAND, GA  
31522

PHONE: (912) 634-8585  
FAX: (912) 634-8688

COPYRIGHT 2007

ARCHITECT SEAL



ENGINEER SEAL

PROJECT NAME

TEMPORARY  
MINIMUM SECURITY  
DETENTION  
FACILITY  
for the  
GLYNN COUNTY  
BOARD OF  
COMMISSIONERS

DRAWING TITLE

TYPICAL  
SITE  
DETAILS

DATE

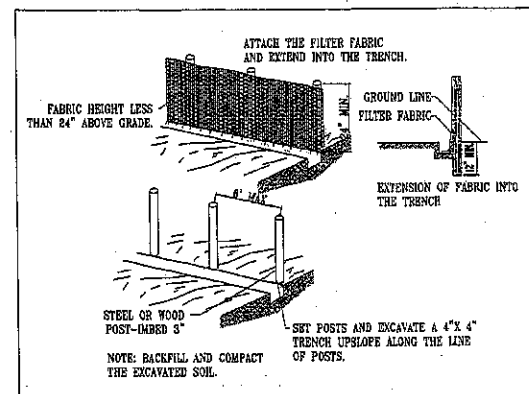
JULY 12, 2007

PROJECT NUMBER

0703

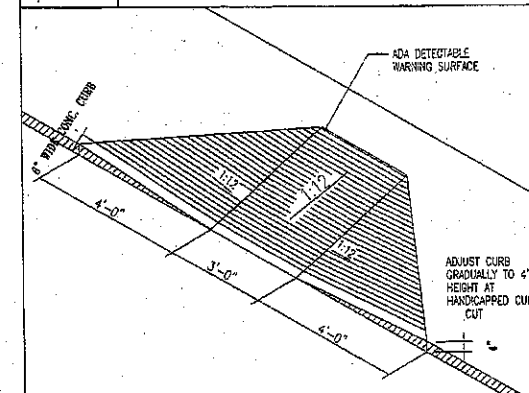
CADD FILE NUMBER

C001



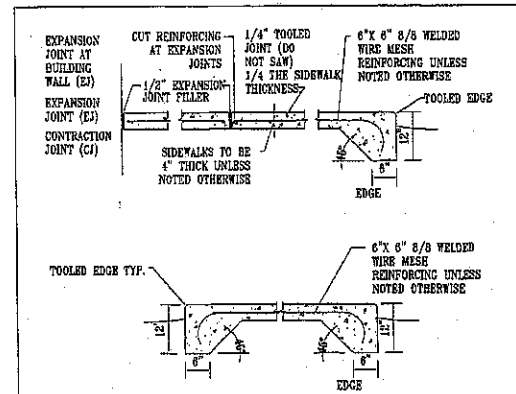
1 TEMPORARY-SEDIMENT-FENCE

1/2"=1'-0"



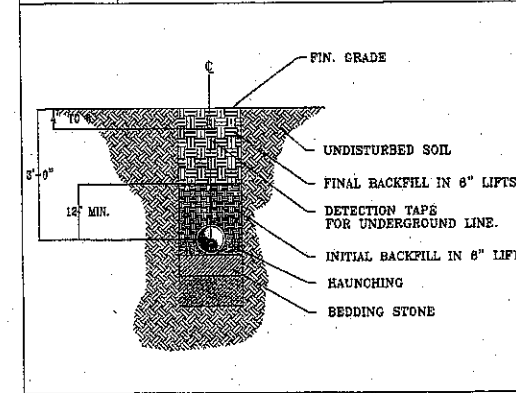
4 TYPICAL-HANDICAP-CURB-CUT

1/4"=1'-0"



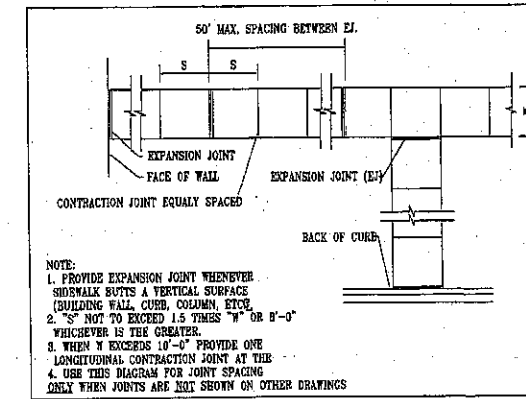
2 TYP.-SIDEWALK-SECTION

3/4"=1'-0"



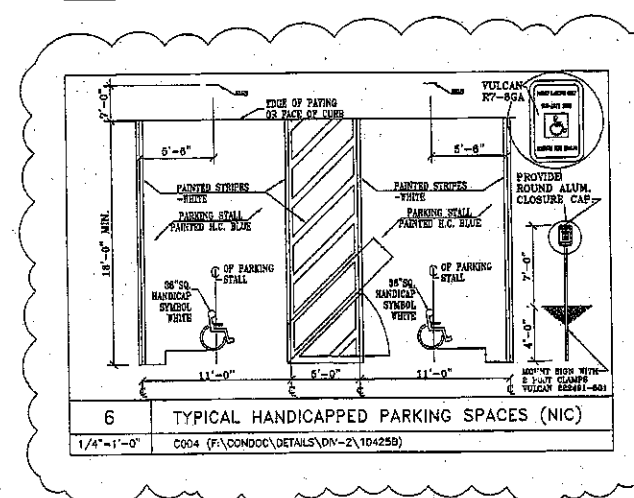
5 TYPICAL-TRENCH-DETAIL

1/2"=1'-0"



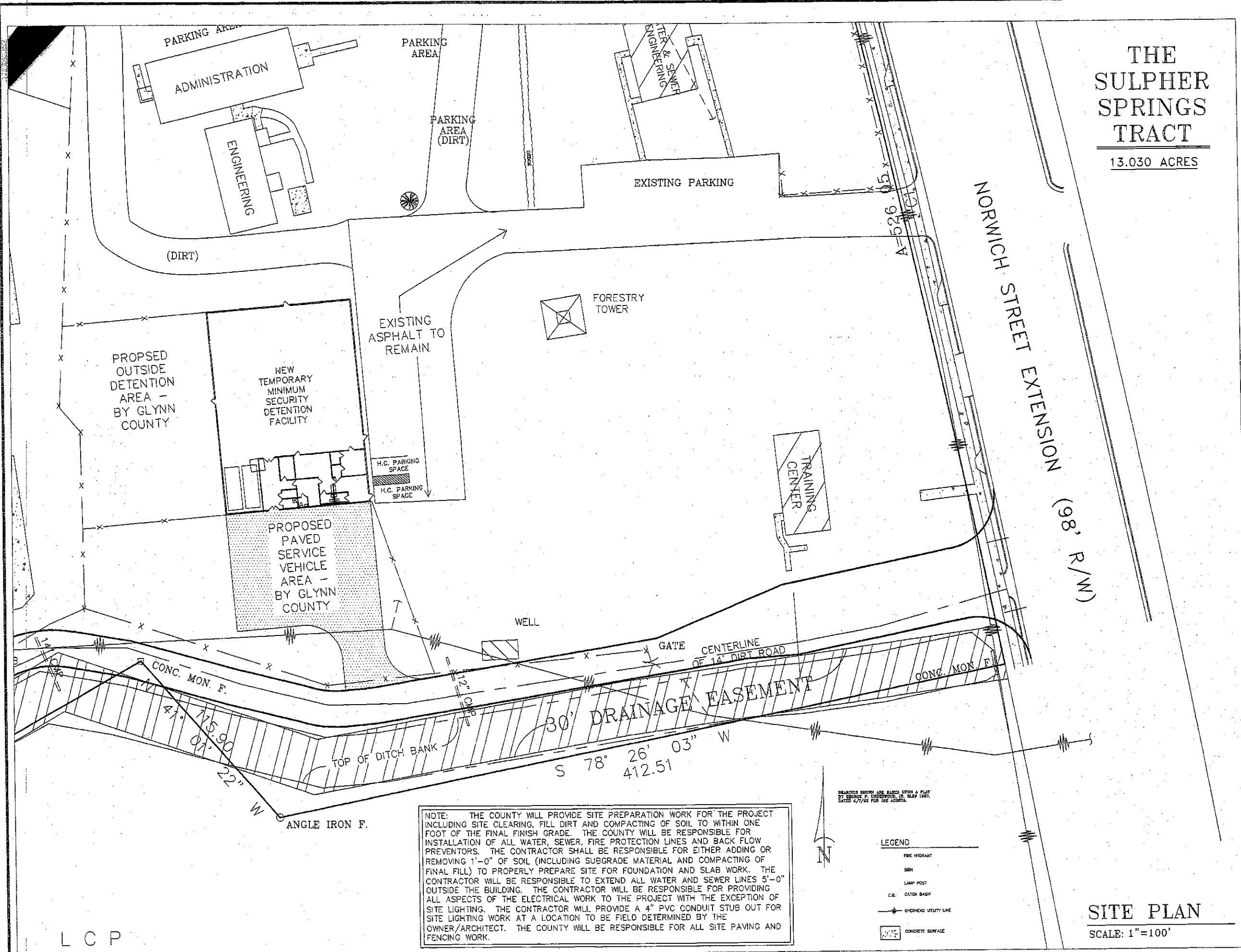
3 SIDEWALK-JOINT-DIAGRAM

1/4"=1'-0"



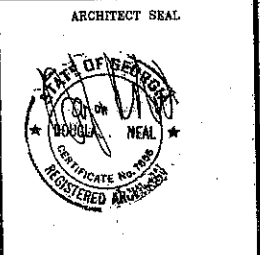
6 TYPICAL HANDICAPPED PARKING SPACES (NIC)

1/4"=1'-0" C004 (F:\CONDOR\DETAILS\DN-2\104259)



**THE  
SULPHUR  
SPRINGS  
TRACT**  
13.030 ACRES

DOUGLAS A. NEAL  
ARCHITECT, INC.  
ARCHITECTURE  
MASTER PLANNING  
CONSULTING  
907 ROSE COTTAGE ROAD  
ST. SIMONS ISLAND, GA  
31522  
PHONE: (912) 634-8585  
FAX: (912) 634-8586  
COPYRIGHT 2007



ARCHITECT SEAL  
ENGINEER SEAL

PROJECT NAME  
**TEMPORARY  
MINIMUM SECURITY  
DETENTION  
FACILITY  
for the  
GLYNN COUNTY  
BOARD OF  
COMMISSIONERS**

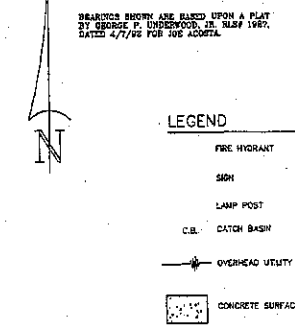
DRAWING TITLE  
**SITE PLAN**

DATE  
JULY 12, 2007

PROJECT NUMBER  
0703

CADD FILE NUMBER

NOTE: THE COUNTY WILL PROVIDE SITE PREPARATION WORK FOR THE PROJECT INCLUDING SITE CLEARING, FILL DIRT AND COMPACTING OF SOIL TO WITHIN ONE FOOT OF THE FINAL FINISH GRADE. THE COUNTY WILL BE RESPONSIBLE FOR INSTALLATION OF ALL WATER, SEWER, FIRE PROTECTION LINES AND BACK FLOW PREVENTORS. THE CONTRACTOR SHALL BE RESPONSIBLE FOR EITHER ADDING OR REMOVING 1'-0" OF SOIL (INCLUDING SUBGRADE MATERIAL AND COMPACTING OF FINAL FILL) TO PROPERLY PREPARE SITE FOR FOUNDATION AND SLAB WORK. THE CONTRACTOR WILL BE RESPONSIBLE TO EXTEND ALL WATER AND SEWER LINES 5'-0" OUTSIDE THE BUILDING. THE CONTRACTOR WILL BE RESPONSIBLE FOR PROVIDING ALL ASPECTS OF THE ELECTRICAL WORK TO THE PROJECT WITH THE EXCEPTION OF SITE LIGHTING. THE CONTRACTOR WILL PROVIDE A 4" PVC CONDUIT STUB OUT FOR SITE LIGHTING WORK AT A LOCATION TO BE FIELD DETERMINED BY THE OWNER/ARCHITECT. THE COUNTY WILL BE RESPONSIBLE FOR ALL SITE PAVING AND FENCING WORK.



**SITE PLAN**  
SCALE: 1"=100'

**C101**

L C P