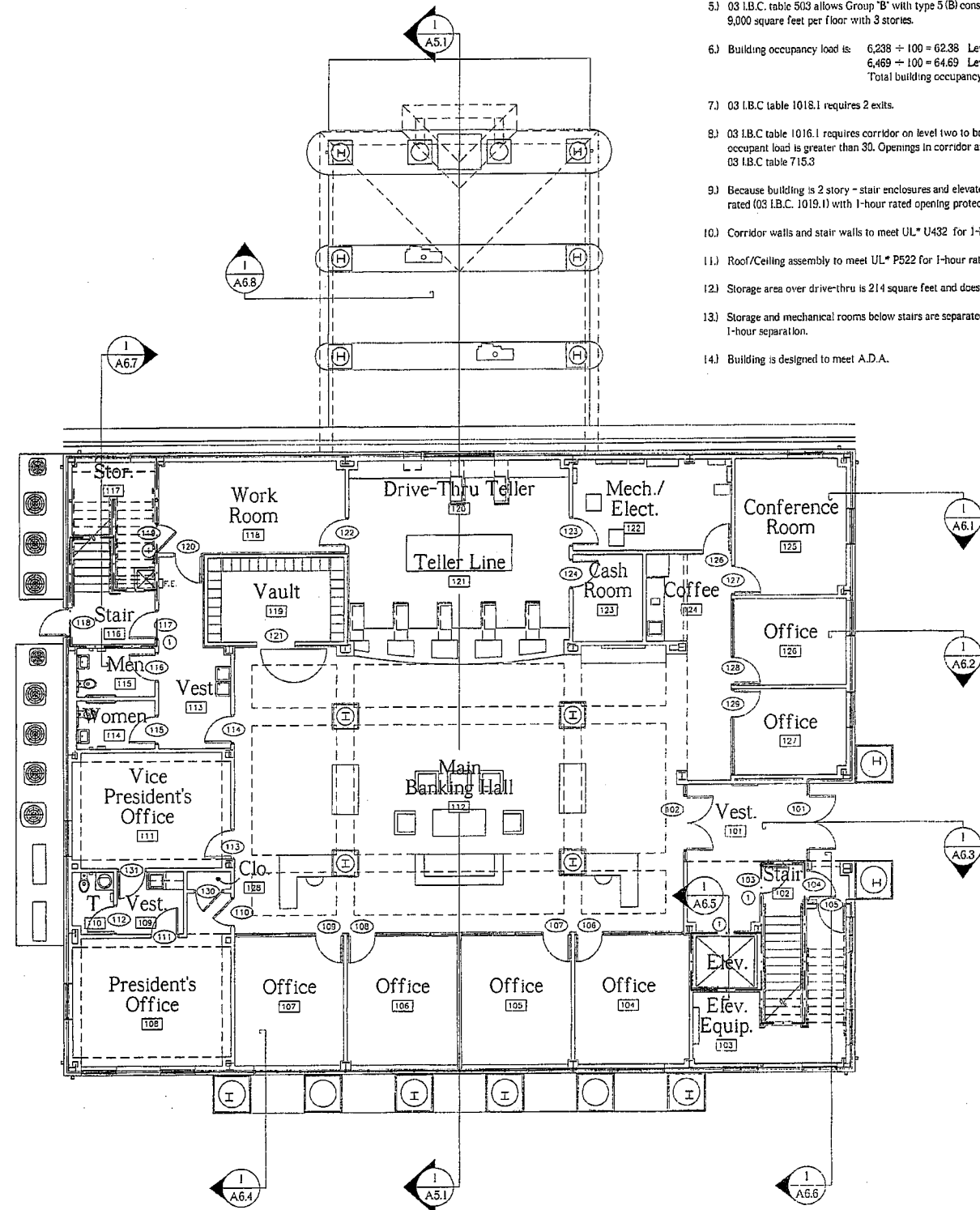


Fire Protection Notes

- 1) Building is designed to meet 2003 International Building Code.
- 2) Building is two-story with
 - 6,238 square feet level one
 - 6,469 square feet level two
 - 12,707 Total Square Footage
- 3) Building occupancy is classified as Group "B" 031.B.C. 304.1
- 4) Construction type is 5 (B) with no rating required for structural frame, bearing walls, non-bearing walls - interior and exterior, floor construction, or roof ceiling construction.
- 5) 03 I.B.C. table 503 allows Group "B" with type 5 (B) construction to be 9,000 square feet per floor with 3 stories.
- 6) Building occupancy load is:
 - 6,238 ÷ 100 = 62.38 Level One 031 I.B.C. table 1004.2
 - 6,469 ÷ 100 = 64.69 Level Two 031 I.B.C. table 1004.2
 - Total building occupancy = 127.07
- 7) 03 I.B.C. table 1018.1 requires 2 exits.
- 8) 03 I.B.C. table 1016.1 requires corridor on level two to be 1-hour rated because the occupant load is greater than 30. Openings in corridor are required to be 20 minute rated 03 I.B.C. table 715.3
- 9) Because building is 2 story - stair enclosures and elevator shaft are required to be 1-hour rated (03 I.B.C. 1019.1) with 1-hour rated opening protection. 03 I.B.C. table 715.3
- 10) Corridor walls and stair walls to meet UL* U432 for 1-hour rating.
- 11) Roof/Ceiling assembly to meet UL* P522 for 1-hour rating at top of corridors and stairs.
- 12) Storage area over drive-thru is 214 square feet and does not require occupancy separation.
- 13) Storage and mechanical rooms below stairs are separated from stair by drywall providing 1-hour separation.
- 14) Building is designed to meet A.D.A.



Level One Fire Protection Plan

Scale: 1/8" = 1'-0"

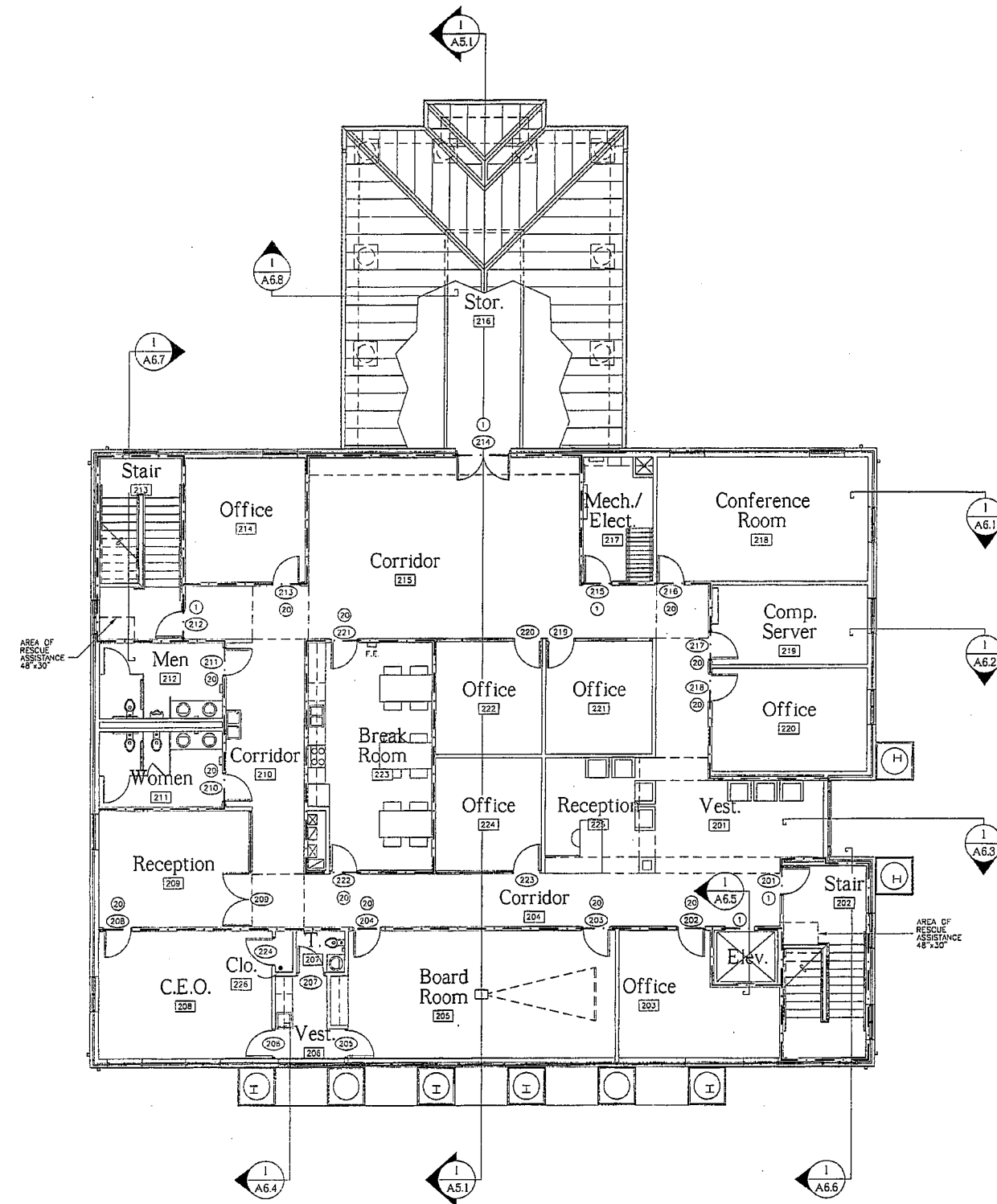
Plumbing Calculations

Total Building Occupant Load Level Two = 270

- Required**
- 2 male toilets and 2 male sinks
 - 2 female toilets and 2 female sinks
 - 2 drinking fountains
 - 1 service sink

Fire Protection Legend

- 1 HOUR RATED WALL
- ⊙ 20 MINUTE RATED DOOR
- ⊙ 1 HOUR RATED DOOR



Level Two Fire Protection Plan

Scale: 1/8" = 1'-0"

