

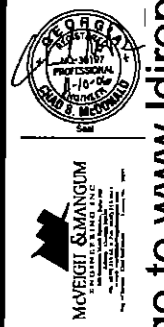
**1** FOUNDATION AND GROUND FLOOR PLAN  
 S1.1 SCALE: 1/8" = 1'-0"

- PLAN NOTES:**
- ELEVATIONS ARE BASED ON DATUM EL. 100'-0". FOR ACTUAL ELEVATION, SEE CIVIL DRAWINGS.
  - DENOTES FOOTING TYPE. SEE SCHEDULE THIS SHEET.
  - TOP OF EXTERIOR COLUMN FOOTINGS EL. 98'-0" TYP., UNLESS OTHERWISE NOTED (UON).  
 TOP OF INTERIOR COLUMN FOOTINGS EL. 98'-0" TYP., UNLESS OTHERWISE NOTED (UON).
  - FOR DESIGN CRITERIA AND GENERAL NOTES, SEE SHEET S3.1.
  - SEE DETAIL 3/S3.2, WHERE PIPE PENETRATES PERIMETER OF BUILDING.  
 SEE MECH. PLUMBING, AND ARCH FOR PIPE LOCATION, SIZE AND ELEVATION.
  - PROVIDE REINFORCEMENT AT FTG CORNERS PER DETAIL 2/S3.2.
  - "TE" DENOTES THICKENED SLAB EDGE. SEE DETAIL 4/S3.2.
  - ▨ DENOTES ARCHITECTURAL VENEER. SEE ARCH DWGS.
  - SEE ARCHITECTURAL DRAWINGS FOR DIMENSIONS, SECTIONS, AND ELEVATIONS NOT SHOWN.

TYPE	LENGTH	WIDTH	DEPTH	BOTTOM REINF.		TOP REINF.		REMARKS
				LONG WAY	SHORT WAY	LONG WAY	SHORT WAY	
A	5'-0"	5'-0"	1'-6"	5-#5	3-#5	-	-	
B	4'-0"	4'-0"	1'-6"	4-#5	4-#5	-	-	
C	24'-0"	4'-0"	1'-6"	3-#5	#5@13	3-#5	#5@13	
D	21'-2"	7'-0"	1'-6"	5-#5	#5@15	5-#5	#5@15	

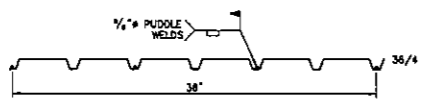
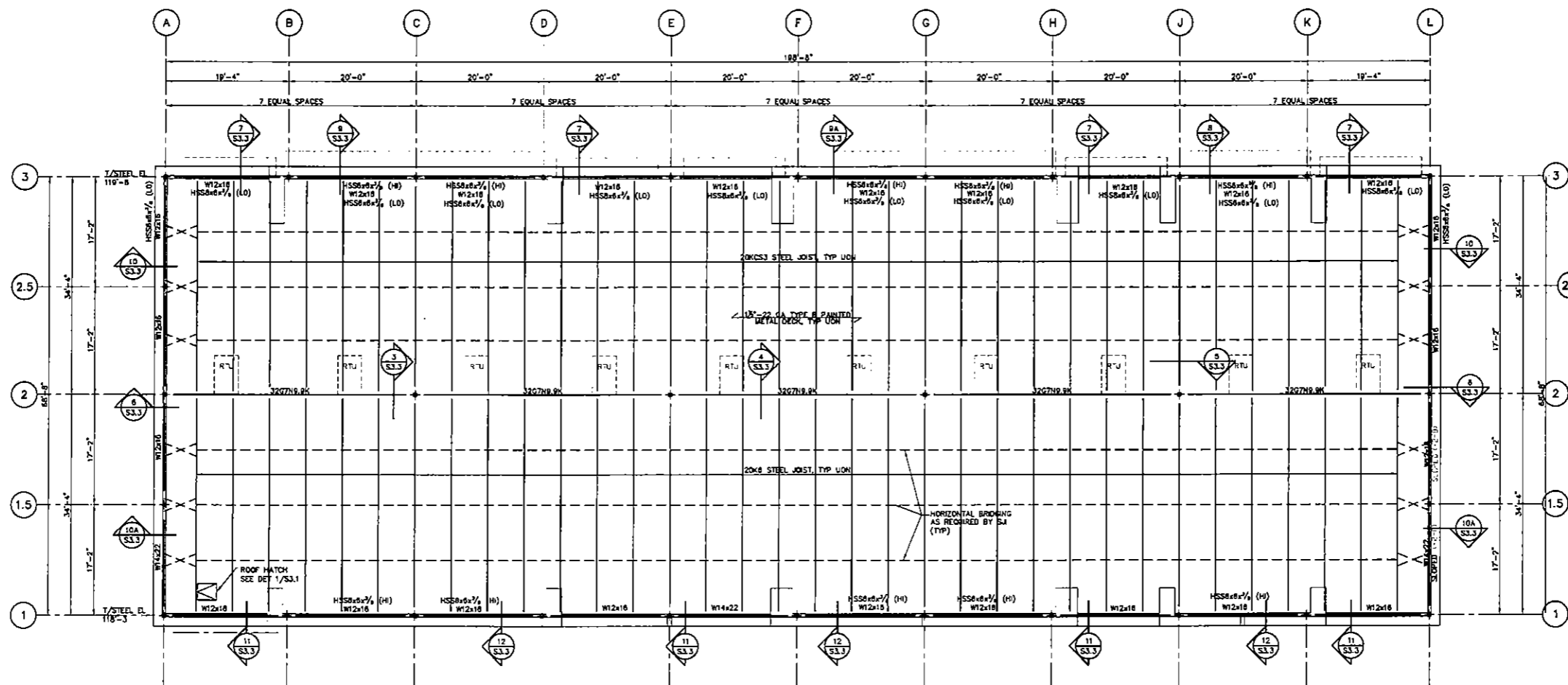
SIXES AND RIDGE ROAD DEVELOPMENT  
 FOUNDATION AND GROUND FLOOR PLAN  
 3422 SIXES ROAD  
 CANTON, GA 30114

S 1.1 IRAM PROPERTIES LLC. To order plans, go to [www.idirepro.com](http://www.idirepro.com)



Job Number: 062010  
 Drawn: EFC  
 Checked: CSM  
 Date: 11.01.08  
 Copyright © 2008  
 Group 54 Design LLC  
 Revision & Submission Record:

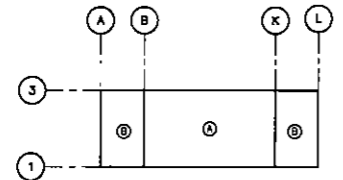
160 TRINITY AVENUE SW, SUITE A  
 ATLANTA, GA 30303 843.693.0610



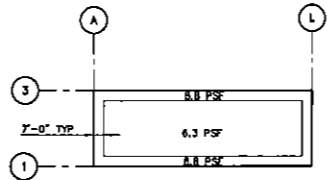
TYP WELD PATTERN FOR ROOF DECK ATTACHMENT

**ROOF DECK ATTACHMENT NOTES**

- ATTACHMENT AT SUPPORTS SHALL BE WELDS.
- ATTACHMENT AT SIDE LAPS SHALL BE #10 TENS SCREWS.
- ATTACHMENT AROUND OPENINGS SHALL BE WELDS @ 6" OC.
- ATTACHMENT AT SIDE SUPPORTS ALONG PERIMETER SHALL BE WELDS @ 12" OC TYP.
- MINIMUM ENLAP 3" TYP.
- SIDE LAPS:
  - ZONE (A) 3/8" W/ 4 SIDELAPS PER SPAN
  - ZONE (B) 3/8" W/ 7 SIDELAPS PER SPAN



DECK ATTACHMENT DIAGRAM



**NET WIND UPLIFT PRESSURE DIAGRAM**

- (BASED ON 100SF TRIB AREA)
- NOTES:
- ALL STEEL JOISTS SHALL BE DESIGNED FOR A NET WIND UPLIFT PRESSURE SHOWN ABOVE. (INCLUDES 7 PSF UNF DEAD LOAD)
  - THE ROWS OF BRIDGING SHALL BE INCREASED AS REQUIRED FOR UPLIFT. CROSS BRIDGING NOT SHOWN SHALL BE PROVIDED PER SJ REQUIREMENTS.
  - SINCE A RF FACTOR OF 0.85 HAS BEEN USED, NO INCREASE IN ALLOWABLE WORKING STRESS IS PERMITTED.

**1 ROOF FRAMING PLAN**

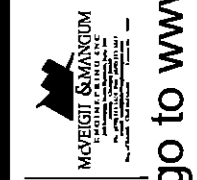
SCALE: 1/8" = 1'-0"

- PLAN NOTES:
- ELEVATIONS ARE BASED ON TOP OF SLAB ON GRADE DATUM EL OF 100'-0".
  - TOP OF JOIST ELEVATION VARIES LINEARLY. SEE PLAN.
  - T/JOIST ORDER AND STEEL EL IS 2 1/2" BELOW T/JOIST EL TYP UON.
  - ( ) INDICATES CHANGE IN T/STEEL ELEVATION FROM TYPICAL.
  - FOR JOIST REINFORCING AT CONCENTRATED LOADS, SEE DETAIL 2/S3.1.
  - FOR FRAMING AT ROOF OPENINGS, SEE DETAIL 1/S3.1.
  - PROVIDE UPLIFT BRIDGING (NOT SHOWN) AS REQ'D BY JOIST ENGINEER BASED ON UPLIFT DIAGRAM THIS SHEET.
  - FOR DESIGN CRITERIA AND GENERAL NOTES, SEE SHEET S3.1.
  - ROOF DECK ATTACHMENT SHALL BE PER SJI SPECIFICATIONS AND AS INDICATED BY DECK ATTACHMENT DETAIL THIS SHEET.
  - KCS JOISTS HAVE BEEN DESIGNED FOR MAXIMUM RTU WEIGHT OF 1500 LBS TO BE DISTRIBUTED BETWEEN EACH PAIR OF KCS JOIST AT ANY POINT ALONG THE SPAN. VERIFY EQUIPMENT WEIGHTS WITH RTU'S PURCHASED PRIOR TO INSTALLATION. NOTIFY ENGINEER OF ANY PROPOSED DEVIATIONS FROM THE ABOVE.
  - JOIST ORDERS SHALL BE DESIGNED FOR THE PANEL POINT LOAD SHOWN IN THE JO DESIGNATION WHICH INCLUDES ALLOWANCE FOR MECHANICAL EQUIPMENT.
  - VERIFY ALL OPENINGS AND LOADS AFFECTED BY MECHANICAL WITH THE EQUIPMENT PURCHASER.
  - PROVIDE BRIDGING PER SJ SPECIFICATIONS. WHERE BRIDGING IS INTERRUPTED BY MECHANICAL UNITS, ROOF OPENINGS OR OTHERWISE, PROVIDE SPECIAL BRIDGING DESIGN TO ACCOMMODATE SPECIAL CONDITIONS. SUCH SPECIAL BRIDGING SHALL BE SHOWN ON SHOP DRAWINGS SUBMITTED FOR ENGINEER REVIEW AND APPROVAL.
  - SEE ARCHITECTURAL DRAWINGS FOR DIMENSIONS, SECTIONS, AND ELEVATIONS NOT SHOWN.

11/10/08 17:42 08790-S3.1.dwg 11.08

Job Number - 060701  
 Drawn - EFC  
 Checked - CSM  
 Date - 11.01.08  
 Copyright © 2008  
 Group SSI Design L.L.C.  
 Revision & Supersession Record

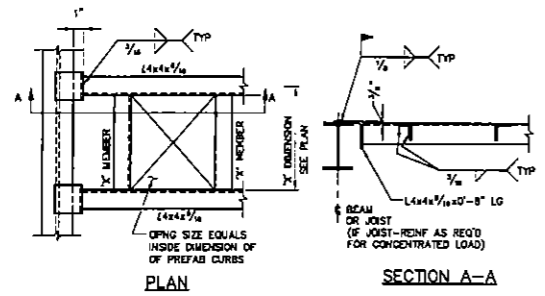
160 TRINITY AVENUE SW, SUITE A  
 ATLANTA, GA 30303 843.693.0610



SIXES AND RIDGE ROAD DEVELOPMENT  
 3422 SIXES ROAD  
 CANTON, GA 30114

ROOF FRAMING PLAN  
 S2.1 IRAM PROPERTIES LLC.

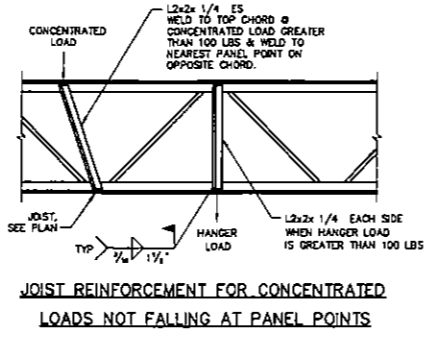
To order plans, go to [www.ldirepro.com](http://www.ldirepro.com)



TYPICAL FRAMING AT ROOF OPENING

- NOTES:
- 1) VERIFY ALL DIM. W/SUPPLIER BEFORE FABRICATION
  - 2) INSTALL PREFAB CURBS DIRECTLY ON STEEL SUPPORT ANGLES
  - 3) ROOF DECK IS NOT REQUIRED INSIDE HIGH LIFT CURBS
  - 4) AT OPENINGS 4" TO 12" PROVIDE 1/2"x1/4"x3'-0" PERPENDICULAR TO DECK SPAN. 1/4" WELD TO EACH FLUTE

"X" DIM.	"X" MEMBER
< 3'-0"	1/2"x3/4"
< 8'-0"	1/2"x1/4" LLV
< 8'-0"	1/2"x1/4"



JOIST REINFORCEMENT FOR CONCENTRATED LOADS NOT FALLING AT PANEL POINTS

SECTION 1 SCALE: NTS

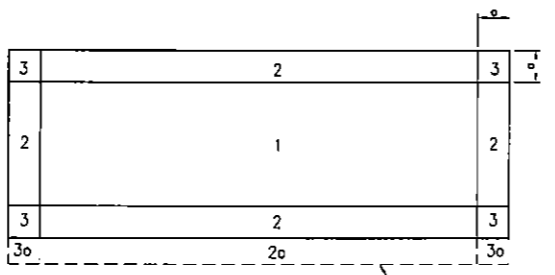
SECTION 2 SCALE: NTS

COMPONENT & CLADDING DESIGN WIND PRESSURES (PSF)			
ROOF			
ZONE	10 SF	50 SF	100 SF
ALL ZONES	10	10	10
1	-14.6	-13.7	-13.3
2	-24.4	-18.4	-15.8
3	-24.4	-18.4	-15.8
1a & 2a	-21.0	-20.1	-19.8
3a	-21.0	-20.1	-19.8
WALLS			
ZONE	10 SF	100 SF	500 SF
4	13.3	11.4	10.0
	-14.4	-12.5	-11.1
4p	33.3	25.3	21.4
	-23.3	-19.4	-16.7
5	13.3	11.4	10.0
	-17.8	-13.9	-11.1
5p	33.3	25.3	21.4
	-26.7	-20.8	-16.7

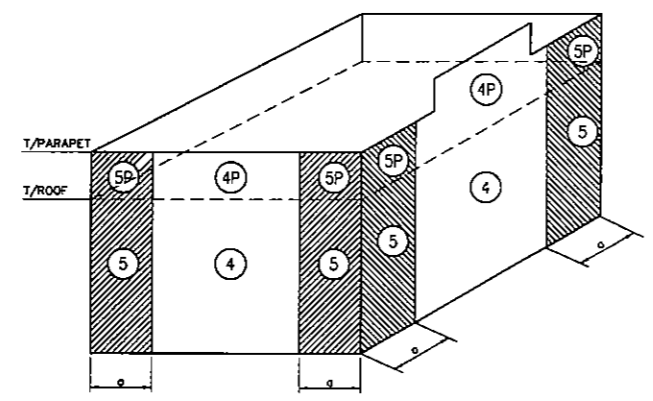
NOTES:

- 1) TABLE PRESSURES ARE FOR THE SQUARE FOOT (SF) TRIBUTARY AREA SHOWN. FOR OTHER TRIBUTARY AREAS, LINEARLY INTERPOLATE BETWEEN WALLS SHOWN ABOVE.
- 2) POSITIVE PRESSURES ACT TOWARD THE BUILDING. NEGATIVE PRESSURES ACT AWAY FROM THE BUILDING.
- 3) SEE DIAGRAMS FOR LOCATION OF ZONES.

q=7'-0"



ROOF PLAN (GENERIC BUILDING SHOWN)



WALLS (GENERIC BUILDING SHOWN)

WIND PRESSURE DIAGRAMS SCALE: NTS

DESIGN CRITERIA

DESIGN PER 2000 INTERNATIONAL BUILDING CODE, (WITH GEORGIA AMENDMENTS) UNLESS OTHERWISE NOTED.

LIVE LOADS:	0 TO 200 SF	20 PSF
	201 TO 800 SF	15 PSF
	OVER 800 SF	12 PSF
ROOF DEAD LOADS:		20 PSF

WIND LOADS:		
BASIC WIND SPEED: (ASCE 7)	90 MPH	
MEAN ROOF HEIGHT	18 FT	
WIND IMPORTANCE FACTOR (CATEGORY I)	1.00	
WIND EXPOSURE	ENCLOSED	
ENCLOSURE CLASSIFICATION	± 0.18	
INTERNAL PRESSURE COEFFICIENT	0.85	
DIRECTIONALITY FACTOR (Kd)	PER CODE	

SEISMIC:		
IMPORTANCE FACTOR, I	1.00	
SEISMIC USE GROUP		
MAPPED SPECTRAL RESPONSE ACCELERATION, Sa	0.340	
MAPPED SPECTRAL RESPONSE ACCELERATION, S1	0.125	
SITE CLASS		
SPECTRAL RESPONSE COEFFICIENT, Sd1	0.340	
SEISMIC DESIGN CATEGORY	1	
BASIC STRUCTURAL SYSTEM	BUILDING FRAME	
SEISMIC RESISTING SYSTEM	CONCENTRICALLY BRACED FRAMES	
RESPONSE MODIFICATION FACTOR, R	3.0	
ANALYSIS PROCEDURE	EQUIL LATERAL FORCE	
SEISMIC RESPONSE COEFFICIENT, Ca	0.089	
DESIGN BASE SHEAR, V	0.069W	

CONCRETE (DESIGN PER CURRENT EDITION ACI 318)		
SLAB ON GRADE	F'c= 3000 PSI	
FOOTINGS	F'c= 3000 PSI	
ALL OTHER CONCRETE	F'c= 3000 PSI	

ALL REINFORCING STEEL, ASTM A615 GRADE 60  
ALL WELDED WIRE FABRIC, ASTM A185

STRUCTURAL STEEL (DESIGN PER CURRENT EDITION AISC), UNLESS OTHERWISE NOTED (UON) MATERIALS SHALL BE AS FOLLOWS:	
W-SHAPES	ASTM A992, Fy=50 KSI
OTHER SHAPES & PLATES	ASTM A36, Fy=36 KSI
HSS SQUARE & RECTANGULAR SHAPES	ASTM A500 GRADE B, Fy=48 KSI
STEEL PIPES	ASTM A53 GRADE B, Fy=35 KSI
WELDING ELECTRODES	AWS E70 OR A5.5 SIZES E70
HIGH-STRENGTH BOLTS	1/2" # ASTM A325
ANCHOR RODS	GRADE 36 ASTM F1554
WELDED STUDS	ASTM A108
PAINT & PROTECTION	SSPC PAINT 25

OPEN WEB STEEL JOIST (DESIGN PER CURRENT EDITION SJI WITH AN ALLOWABLE TENSILE STRESS OF 30,000 PSI)  
SOIL BEARING (DESIGN MAXIMUM) 2500 PSF

GENERAL NOTES

- CONCRETE
- UNLESS OTHERWISE NOTED (UON) ON THE DRAWINGS, MINIMUM COVER FOR REINFORCING SHALL BE AS FOLLOWS:
- FOOTINGS 3"
- ALL REINFORCING SHALL BE HELD SECURELY IN POSITION WITH STANDARD ACCESSORIES IN CONFORMANCE WITH CRSI MANUAL OF STANDARD PRACTICE AND ACI 318 DURING THE PLACING OF THE CONCRETE.
- UNLESS OTHERWISE NOTED, SPLICES IN REINFORCING, WHERE PERMITTED, SHALL BE AS FOLLOWS:
- WELDED WIRE FABRIC WIRE SPACING PLUS 4"
- REINFORCING BARS 40 BAR DIAMETERS
- ALL HOOKS IN REINFORCING BARS SHALL BE AN ACI STANDARD HOOK, UNLESS OTHERWISE NOTED.

FOUNDATIONS

IF FOOTING ELEVATIONS SHOWN OCCUR IN A DISTURBED, UNSTABLE, OR UNSUITABLE SOIL, THE ENGINEER SHALL BE NOTIFIED.

STEEL

- ALL BOLTS SHALL BE SNUG TIGHT (AS DEFINED BY AISC) UON.
- UNLESS OTHERWISE NOTED, BEAM-TO-BEAM AND BEAM-TO-COLUMN CONNECTIONS SHALL BE AS SHOWN IN DETAIL 1/53.3 AND 2/53.3.
- MINIMUM SIZE OF ALL FILLET WELDS SHALL CONFORM TO SECTION J2 AISC SPECIFICATIONS EVEN THOUGH SHOWN OTHERWISE ON ARCHITECTURAL, MECHANICAL, OR STRUCTURAL DRAWINGS.
- ALL WELDS ALONG THE LENGTH OF MEMBERS INDICATED ON ARCHITECTURAL OR STRUCTURAL DRAWINGS, BUT NOT SIZED, SHALL BE A MINIMUM OF:
- 1/4" 2-12  
1/4" 2-12

PROVIDE ANGLE SUPPORT (USE L2 1/2"x2 1/2"x1/4") ALONG FACE OF STEEL COLUMNS WHERE METAL DECK OR GRATING SPANS INTO IT.

ALL STEEL JOISTS SHALL BE DESIGNED FOR THE WIND UPLIFT SHOWN. THE ROWS OF BRIDGING SHALL BE INCREASED AS REQUIRED FOR UPLIFT, SINCE A K4 FACTOR OF 0.85 HAS BEEN USED, NO INCREASE IN ALLOWABLE STRESS IS PERMITTED.

ANGLE FRAME MEMBERS AROUND TRENCHES, PITS, OPENINGS, ETC., SHALL BE MITERED, WELDED, AND GROUND SMOOTH.

PROVIDE CAMBER IN FABRICATION OF TRUSSES.

STEEL INSPECTIONS

GENERAL, THE CONTRACTOR SHALL EMPLOY AN INDEPENDENT TESTING LABORATORY TO INSURE THAT ALL FASTENERS, WELDS, AND WELDED STUDS ARE INSTALLED IN ACCORDANCE WITH THE SPECIFICATIONS.

BOLTED AND WELDED CONNECTIONS: A VISUAL INSPECTION SHALL BE MADE OF ALL WELDED AND BOLTED CONNECTIONS. IN ADDITION, A MINIMUM OF 10% OF ALL HIGH STRENGTH BOLTS SHALL BE CHECKED FOR PROPER TENSION AND A MINIMUM OF 10% OF ALL FULL PENETRATION WELDS SHALL BE CHECKED BY ULTRASONIC TESTING. ADDITIONAL BOLTS AND WELDS MAY BE TESTED AT THE OPTION OF THE TESTING LAB REPRESENTATIVE. DEFECTIVE BOLTS OR WELDS SHALL BE REMOVED AND REPLACED AT NO ADDITIONAL COST TO THE OWNER. NO ULTRASONIC TESTING OF WELDS SHALL BE STARTED UNTIL THE WELD IS ALLOWED TO COOL TO THE TOUCH OR A MINIMUM TIME OF 24 HOURS HAS ELAPSED AFTER COMPLETION OF THE WELDING.

LIGHT GAGE FRAMING

DESIGN OF METAL STUD FRAMING IS BASED ON SECTION PROPERTIES AND STANDARD NOMENCLATURE AS DEFINED IN "STEEL STUD MANUFACTURERS ASSOCIATION (SSMA)-PRODUCT TECHNICAL INFORMATION, 1980 ED-114-SP." ALTERNATE MANUFACTURER'S FRAMING SIZE SHALL MEET THE MINIMUM SECTION PROPERTIES OF THE MEMBERS INDICATED ON THE DESIGN DRAWINGS.

THE METAL FRAMING SHOWN ON THE DRAWINGS IS DIAGNOSTIC ONLY. MEMBER SIZE, CONFIGURATION, DETAILS AND CONNECTIONS ARE THE RESPONSIBILITY OF THE CONTRACTOR'S METAL FRAMING ENGINEER. METAL FRAMING SHOP DRAWINGS COMPLETE WITH CALCULATIONS, ARE TO BE SIGNED AND SEALED BY THE METAL STUD ENGINEER AND SUBMITTED FOR REVIEW AND APPROVAL. ALL SUBMITTED METAL FRAMING SHOP DRAWINGS, WHICH ARE NOT SIGNED AND SEALED AND/OR REVIEWED BY THE GENERAL CONTRACTOR, SHALL BE REJECTED AND RETURNED TO THE GENERAL CONTRACTOR FOR RE-SUBMISSION.

ALL LIGHT GAGE FRAMING SHALL BE DESIGNED IN ACCORDANCE WITH AMERICAN IRON AND STEEL INSTITUTE (AISI) "SPECIFICATION FOR THE DESIGN OF COLD-FORMED STEEL STRUCTURAL MEMBERS."

ALL FRAMING MEMBERS SHALL BE FORMED FROM STEEL WITH A MINIMUM YIELD STRENGTH OF 33 KSI FOR 33 AND 43 MILL AND 50KSI FOR 54, 60, AND 87 MILL MATERIAL.

ALL FRAMING SHALL BE GALVANIZED.

ALL CONNECTIONS SHALL BE SREWED OR WELDED. USE MINIMUM OF 2-#10 SCREWS AT EACH CONNECTION. POWER DRIVEN FASTENERS (PDF) SHALL COMPLETELY PENETRATE THE STRUCTURAL STEEL.

ALL CONNECTIONS NOT SHOWN HEREIN, OR ANY DESIRED SUBSTITUTIONS SHALL BE ENGINEERED, DETAILED, SUBMITTED, AND SIGNED AND SEALED BY A REGISTERED ENGINEER IN THE STATE OF THE PROJECT.

ALL WELDS SHALL BE TOUCHED UP WITH A ZINC-RICH PAINT.

STUD WALLS SHALL HAVE LATERAL BRACING INSTALLED AT A MAXIMUM SPACING OF 48".

SUPPLEMENTARY NOTES

PROVIDE ALL TEMPORARY BRACING, SHORING, CUYING OR OTHER MEANS TO AVOID EXCESSIVE STRESSES AND TO HOLD STRUCTURAL ELEMENTS IN PLACE DURING CONSTRUCTION. THE STRUCTURE SHOULD NOT BE CONSIDERED STABLE UNTIL ALL STRUCTURAL ELEMENTS HAVE BEEN CONSTRUCTED.

MCVEIGH & MANGUM ENGINEERING, INC OR ANY OF ITS EMPLOYEES SHALL NOT HAVE CONTROL OR BE RESPONSIBLE FOR CONSTRUCTION MEANS, METHODS, TECHNIQUES, PROCEDURES OR SEQUENCES FOR THE ACTS OR OMISSIONS OF THE CONTRACTOR OR ANY OTHER PERSONS PERFORMING THE WORK, OR FOR THE FAILURE OF ANY OF THEM TO CARRY OUT THE WORK IN ACCORDANCE WITH THE CONTRACT DOCUMENTS.

VERIFY ALL DIMENSIONS WITH ARCHITECTURAL DRAWINGS.

SEE ARCHITECTURAL, MECHANICAL, ELECTRICAL AND PLUMBING DRAWINGS FOR CHASES, OPENINGS, SLEEVES, ETC. NOT SHOWN ON THE STRUCTURAL DRAWINGS.

ALL STRUCTURAL OPENINGS AROUND OR AFFECTED BY MECHANICAL ELECTRICAL AND PLUMBING EQUIPMENT SHALL BE VERIFIED WITH EQUIPMENT PURCHASED BEFORE PROCEEDING WITH STRUCTURAL WORK AFFECTED.

CONTRACTOR SHALL VERIFY ALL EXISTING DIMENSIONS AND CONDITIONS OF EXISTING STRUCTURE AND SITES THAT ARE AFFECTED BY NEW WORK BEFORE PROCEEDING WITH FABRICATION AND CONSTRUCTION.

EMBEDMENT FOR EXPANSION BOLTS SHALL BE 3/4" MINIMUM FOR 1/2" BOLTS IN CONCRETE. 3/4" IN GROUTED MASONRY. MULTI KWIK BOLT OR EQUAL.

EPOXY GROUT SHALL BE POWER FAST CARTRIDGE SYSTEM BY RAWL HT50 CARTRIDGE SYSTEM BY HILTI. (MULTI RESO, IF HOLE IS CORED INSTEAD OF DRILLED) OR APPROVED EQUAL. UON. EMBEDMENT SHALL BE 12 BAR DIAMETER MINIMUM. UON. HOLES SHALL BE 1/2" LARGER THAN REBAR SIZE AND 1/4" LARGER THAN THREADED ROD SIZE. HOLE SHALL BE BRUSHED OUT WITH BRISTLE BRUSH AND THEN BLOWN OUT WITH AIR USING A COMPRESSOR WITH A FUNCTIONAL OIL TRAP. INSTALLATION SHALL BE IN ACCORDANCE WITH MANUFACTURERS PRINTED INSTRUCTIONS.

ANY ENGINEERING DESIGN PROVIDED BY OTHERS AND SUBMITTED FOR REVIEW SHALL BEAR THE SEAL OF AN ENGINEER REGISTERED IN THE STATE OF THE PROJECT.

GENERAL CONTRACTOR MUST REVIEW AND APPROVE SHOP DRAWINGS PRIOR TO SUBMITTAL TO ARCHITECT/ENGINEER. SUBMITTALS WHICH DO NOT CONTAIN THE CONTRACTOR'S SHOP DRAWING STAMP OR HAVE BEEN MERELY "RUBBER STAMPED" SHALL BE RETURNED WITHOUT REVIEW.

CHANGES TO THE CONTRACT DOCUMENTS SHALL BE CLOUDED ON SHOP DRAWINGS OR REQUESTED IN WRITING. THE CONTRACTOR IS LIABLE FOR ANY DEVIATIONS UNLESS REVIEWED AND ACKNOWLEDGED BY THE ENGINEER. SHOP DRAWING SUBMITTALS SHALL ONLY BE CHECKED FOR CONFORMANCE WITH THE DESIGN CONCEPT AND THE INFORMATION SHOWN ON THE CONSTRUCTION DOCUMENTS.

SPECIFICATIONS

CONCRETE WORK SHALL CONFORM TO THE REQUIREMENTS OF ACI 301. "SPECIFICATIONS FOR STRUCTURAL CONCRETE FOR BUILDINGS" (LATEST EDITION), EXCEPT AS MODIFIED BY THE REQUIREMENTS OF THE CONTRACT DOCUMENTS.

ALL STRUCTURAL STEEL WORK SHALL BE IN ACCORDANCE WITH THE LATEST EDITIONS OF AISC "SPECIFICATIONS FOR STRUCTURAL STEEL BUILDINGS", AISC "SPECIFICATIONS FOR STRUCTURAL JOINTS USING ASTM A325 OR A490 BOLTS", AISC "CODE OF STANDARD PRACTICE FOR STEEL BUILDINGS AND BRIDGES", AND AWS D1.1 "STRUCTURAL WELDING CODE", EXCEPT AS MODIFIED BY THE REQUIREMENTS OF THE CONTRACT DOCUMENTS.

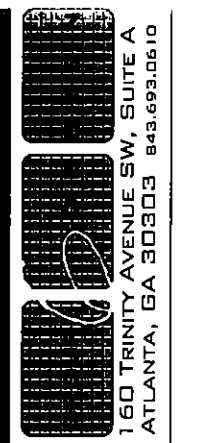
STEEL JOIST AND JOIST GIRDERS WORK SHALL CONFORM TO THE REQUIREMENTS OF THE LATEST EDITIONS OF THE STEEL JOIST INSTITUTE (SJI) "STANDARD SPECIFICATIONS FOR OPEN WEB STEEL JOISTS, K-SERIES" AND "STANDARD SPECIFICATIONS FOR JOIST GIRDERS".

METAL DECK WORK SHALL CONFORM TO THE REQUIREMENTS OF THE LATEST EDITION OF THE STEEL DECK INSTITUTE (SDI) "SPECIFICATIONS AND COMMENTARY FOR STEEL ROOF DECK", "SDI SPECIFICATIONS AND COMMENTARY FOR COMPOSITE STEEL FLOOR DECK", "SDI SPECIFICATIONS AND COMMENTARY FOR NON-COMPOSITE FLOOR DECK", AND "SDI CODE OF RECOMMENDED STANDARD PRACTICE FOR COMPOSITE DECK FORM DECK AND ROOF DECK CONSTRUCTION".

ALL LIGHT GAGE STEEL WORK SHALL CONFORM TO AISI "SPECIFICATION FOR THE DESIGN OF COLD-FORMED STEEL STRUCTURAL MEMBERS" (LATEST EDITION).

A GEOTECHNICAL ENGINEER SHALL BE EMPLOYED TO CONFIRM BEARING PRESSURE STATED PRIOR TO CONSTRUCTION. THE ENGINEER SHALL DEVELOP & ENSURE IMPLEMENTATION OF A SITE PREPARATION PROGRAM AS HE DEEMS NECESSARY TO ACHIEVE THE STATED BEARING PRESSURE.

FOOTING AND SLAB SUBGRADE PREPARATION SHALL BE IN COMPLIANCE WITH APPLICABLE REQUIREMENTS OF AUTHORITIES HAVING JURISDICTION.



Job Number: 000751  
Copyright © 2008  
McViegh & Mangum L.L.C.  
Revision & Substitution Record

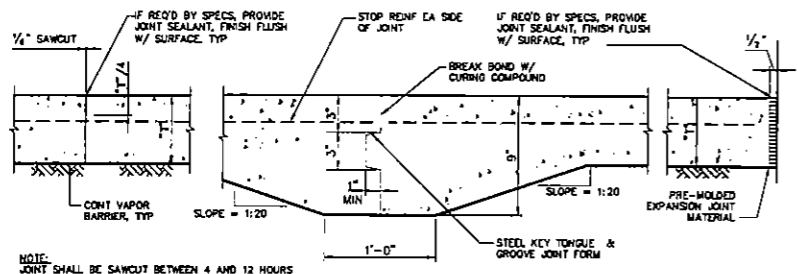


McVIEGH & MANGUM  
INCORPORATED  
1000 W. BROADWAY  
CANTON, GA 30114  
404.525.1100

DESIGN CRITERIA SIXES AND RIDGE ROAD DEVELOPMENT 3422 SIXES ROAD CANTON, GA 30114 NOTES AND DETAILS

S3.1 IRAM PROPERTIES LLC. To order plans, go to www.idirepro.com

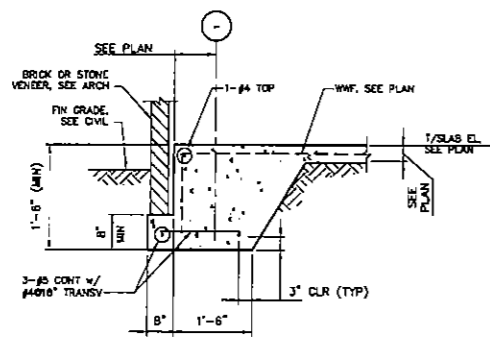
160 TRINITY AVENUE SW, SUITE A ATLANTA, GA 30303 843.693.0610



CRACK CONTROL JOINT (CCJ) CONSTRUCTION JOINT (CJ) EXPANSION JOINT AT WALL (EJ)

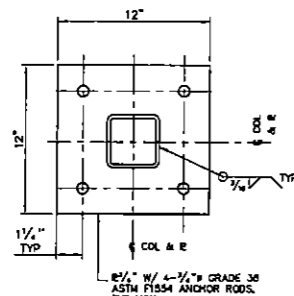
TYPICAL SLAB ON GRADE JOINTS

1 DETAIL S3.2 SCALE: NTS



TYPICAL TURNDOWN W/ BRICK OR STONE VENEER

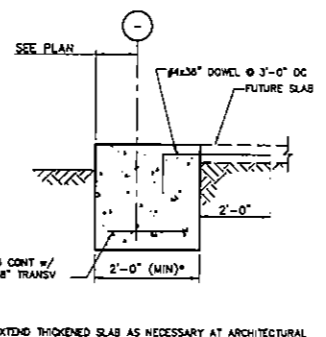
5 SECTION S3.2 SCALE: NTS



HSS COLUMN BASE PLATE

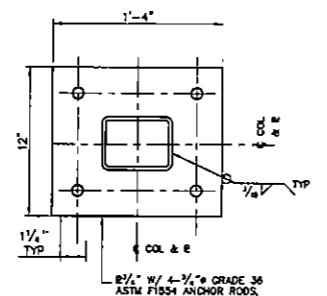
10 DETAIL S3.2 SCALE: NTS

2 DETAIL S3.2 SCALE: NTS



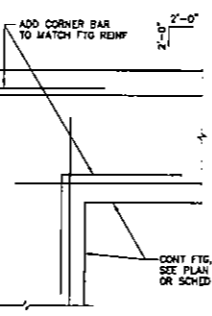
\*EXTEND THICKENED SLAB AS NECESSARY AT ARCHITECTURAL PILASTERS TYPICAL. SEE ARCH DWGS FOR LOCATIONS. SEE SECTION 4/S3.2 FOR INFO NOT SHOWN.

6 SECTION S3.2 SCALE: NTS



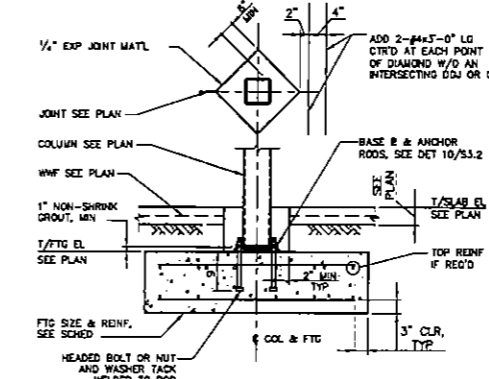
HSS10x6 COLUMN BASE PLATE

11 DETAIL S3.2 SCALE: NTS



TYP PIPE PARALLEL TO WALL TYP PIPE PENETRATION THRU WALL

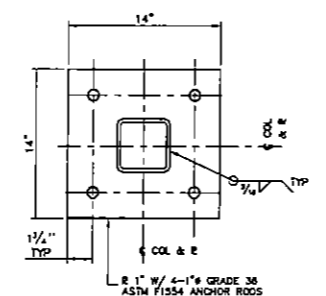
3 DETAIL S3.2 SCALE: NTS



TYPICAL TUBE COLUMN FOOTING

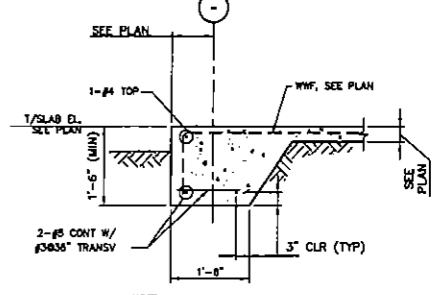
8 SECTION S3.2 SCALE: NTS

7 SECTION S3.2 SCALE: NTS



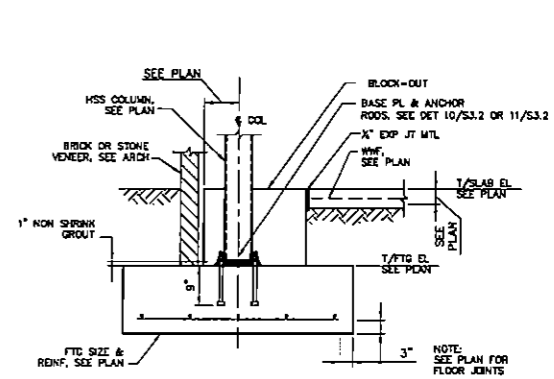
HSS6x6 BRACE FRAME BASE PLATE

12 DETAIL S3.2 SCALE: NTS



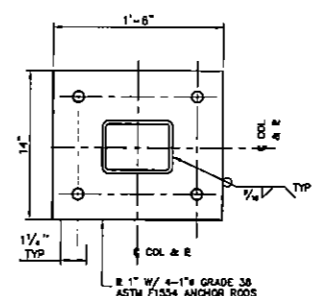
TYPICAL TURNDOWN

4 DETAIL S3.2 SCALE: NTS



TYPICAL COLUMN FOOTING @ SLAB EDGE

9 SECTION S3.2 SCALE: NTS



HSS10x6 BRACE FRAME BASE PLATE

13 DETAIL S3.2 SCALE: NTS

160 TRINITY AVENUE SW, SUITE A  
ATLANTA, GA 30303 843.693.0610

Copyright © 2009  
Gruze S & Design LLC

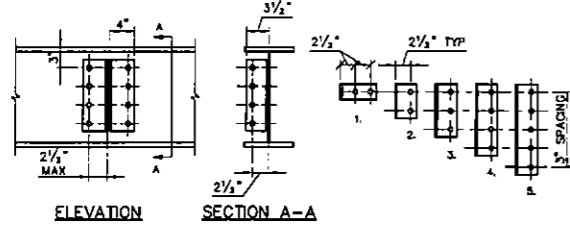
Revision & Submission Record

McVEIGH CONSULTING  
1100  
1100

SIXES AND RIDGE ROAD DEVELOPMENT  
3422 SIXES ROAD  
CANTON, GA 30114

SECTION AND DETAILS  
S3.2 IRAM PROPERTIES LLC.

To order plans, go to [www.lidirepro.com](http://www.lidirepro.com)

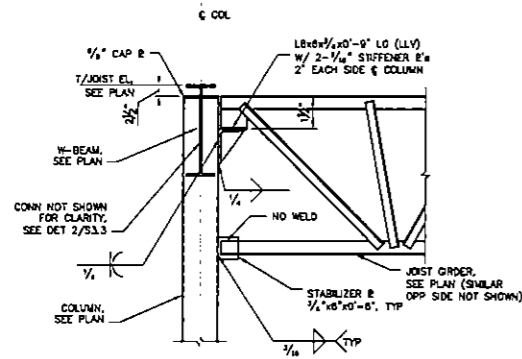


CONNECTION ANGLES				
CONN TYPE	LOAD	SIZE	LENGTH	MINIMUM BEAM SIZE
3	93 K	L4x3 1/2 x 3/8	14 1/2"	W24, W21
4	49 K	L4x3 1/2 x 3/8	11 1/2"	W18, W16
3	39 K	L4x3 1/2 x 3/8	8 1/2"	W14, C15, W12, C12
2	29 K	L4x3 1/2 x 3/8	8 1/2"	W10, C10, W8, C8
1	12 K	L4x4 1/2	2 1/2"	C6, W4

- NOTES:  
 1) BOLTS SHALL BE 1/2" A325-N BEARING TYPE. ALLOWABLE BOLT SHEAR = 9.25 K.  
 2) WELDING MAY BE USED IN LIEU OF BOLTING. WELDS SHALL BE CAPABLE OF RESISTING LOADS SHOWN.  
 3) USE 2 1/4" FOR CONN TO STIFF B OR WT.

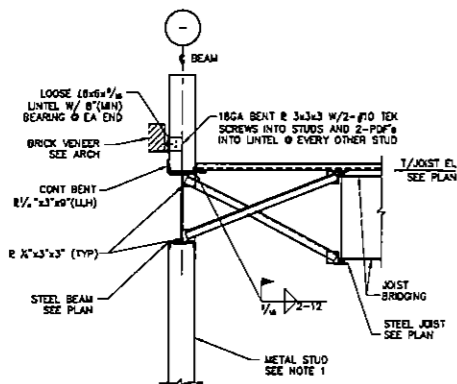
BEAM TO BEAM CONNECTION

1 DETAIL  
S3.3 SCALE: NTS



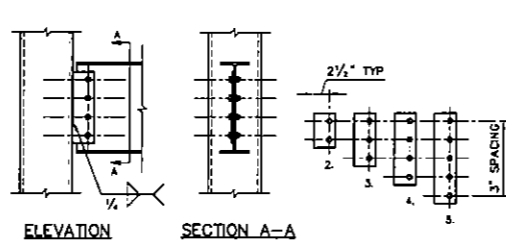
- NOTE:  
 1) PROVIDE ERECTION BOLTS AS REQUIRED BY OSHA.  
 2) STEEL JOIST OPPOSITE TO BEAM NOT SHOWN FOR CLARITY. SEE PLAN.

6 SECTION  
S3.3 SCALE: NTS



- NOTES:  
 1) SEE DETAIL 13/S3.3 FOR TYPICAL HSS GRT TO COLUMN CONNECTION EA END.  
 2) METAL STUD FRAMING AND CONNECTIONS TO GIRTS/EDGE ANGLES, ETC. SHALL BE DESIGNED AND SPECIFIED BY LIGHT GAGE ENGINEER. SEE GENERAL NOTES.  
 3) SEE DETAIL 2/S3.3 FOR BEAM TO COL CONNECTION.

11 SECTION  
S3.3 SCALE: NTS

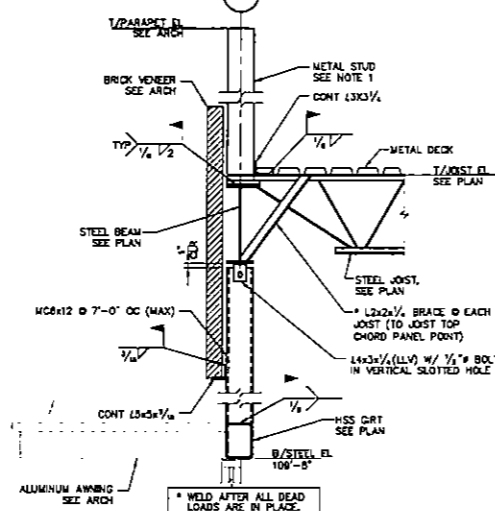


CONNECTION SCHEDULE			
CONN TYPE	LOAD	SINGLE SHEAR PLATE SIZE	MINIMUM BEAM SIZE
5	39 K	R 9/16" x 4" x 15"	W24, W21
4	29 K	R 9/16" x 4" x 12"	W18, W16
3	18 K	R 9/16" x 4" x 9"	W14, C13, W12, C12
2	8 K	R 9/16" x 4" x 8"	W10, C10, W8, C8

- NOTES:  
 1) BOLTS SHALL BE 1/2" A325-N BEARING TYPE. ALLOWABLE BOLT SHEAR = 9.25 K.  
 2) WELDING MAY BE USED IN LIEU OF BOLTING. WELDS SHALL BE CAPABLE OF RESISTING LOADS SHOWN.  
 3) COLUMN THICKNESSES SHALL BE 1/2" MINIMUM.  
 4) SHEAR PLATE SHALL BE WELDED TO COLUMN IN ACCORDANCE WITH THE SIZE NOTED ABOVE.

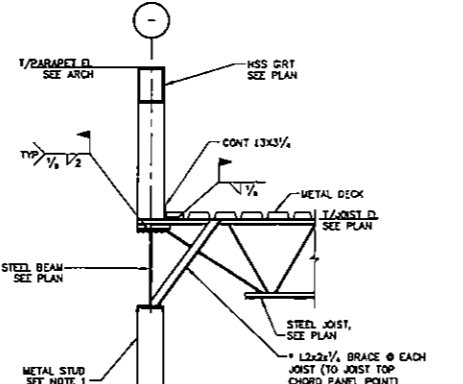
BEAM TO SQUARE HSS COLUMN CONNECTION

2 DETAIL  
S3.3 SCALE: NTS



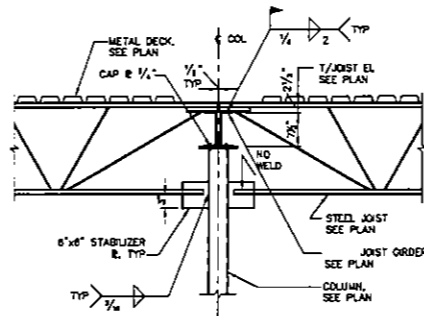
- NOTES:  
 1) SEE DETAIL 13/S3.3 FOR TYPICAL HSS GRT TO COLUMN CONNECTION EA END.  
 2) METAL STUD FRAMING AND CONNECTIONS TO GIRTS/EDGE ANGLES, ETC. SHALL BE DESIGNED AND SPECIFIED BY LIGHT GAGE ENGINEER. SEE GENERAL NOTES.  
 3) SEE DETAIL 2/S3.3 FOR BEAM TO COL CONNECTION.

7 SECTION  
S3.3 SCALE: NTS



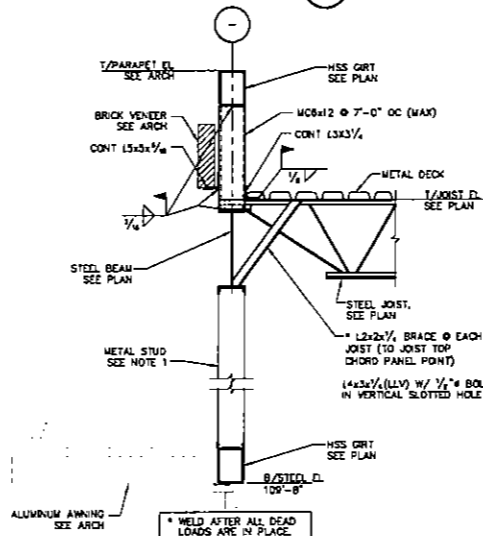
- NOTES:  
 1) SEE DETAIL 13/S3.3 FOR TYPICAL HSS GRT TO COLUMN CONNECTION EA END.  
 2) METAL STUD FRAMING AND CONNECTIONS TO GIRTS/EDGE ANGLES, ETC. SHALL BE DESIGNED AND SPECIFIED BY LIGHT GAGE ENGINEER. SEE GENERAL NOTES.  
 3) SEE DETAIL 2/S3.3 FOR BEAM TO COL CONNECTION.

12 SECTION  
S3.3 SCALE: NTS



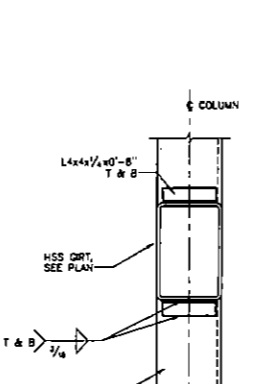
NOTE: PROVIDE ERECTION BOLTS AS REQ'D BY OSHA.

3 DETAIL  
S3.3 SCALE: NTS



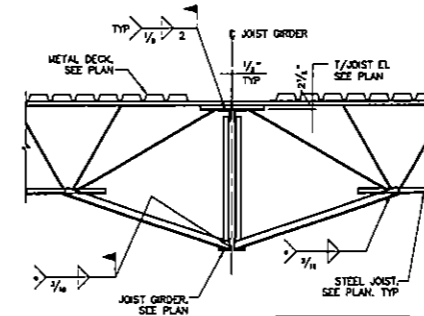
- NOTES:  
 1) SEE DETAIL 13/S3.3 FOR TYPICAL HSS GRT TO COLUMN CONNECTION EA END.  
 2) METAL STUD FRAMING AND CONNECTIONS TO GIRTS/EDGE ANGLES, ETC. SHALL BE DESIGNED AND SPECIFIED BY LIGHT GAGE ENGINEER. SEE GENERAL NOTES.  
 3) SEE DETAIL 2/S3.3 FOR BEAM TO COL CONNECTION.

8 SECTION  
S3.3 SCALE: NTS



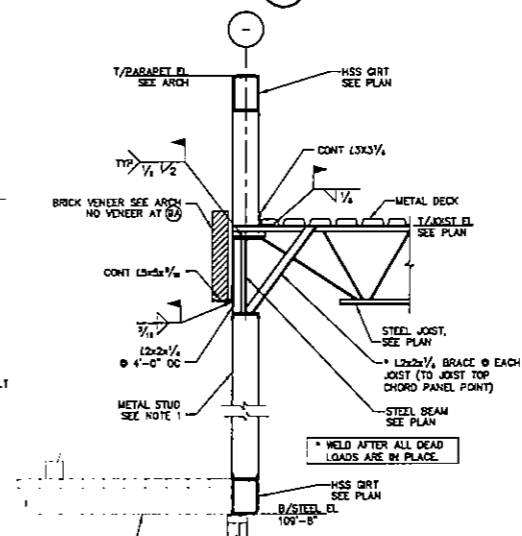
CONN TO COLUMN

13 SECTION  
S3.3 SCALE: NTS



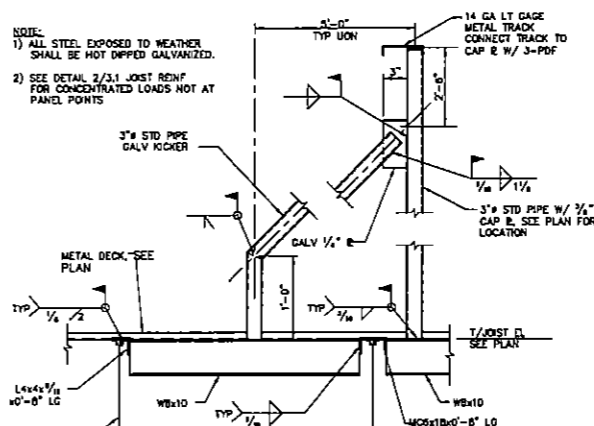
NOTE: PROVIDE ERECTION BOLTS AS REQ'D BY OSHA.

4 DETAIL  
S3.3 SCALE: NTS



- NOTES:  
 1) SEE DETAIL 13/S3.3 FOR TYPICAL HSS GRT TO COLUMN CONNECTION EA END.  
 2) METAL STUD FRAMING AND CONNECTIONS TO GIRTS/EDGE ANGLES, ETC. SHALL BE DESIGNED AND SPECIFIED BY LIGHT GAGE ENGINEER. SEE GENERAL NOTES.  
 3) SEE DETAIL 2/S3.3 FOR BEAM TO COL CONNECTION.

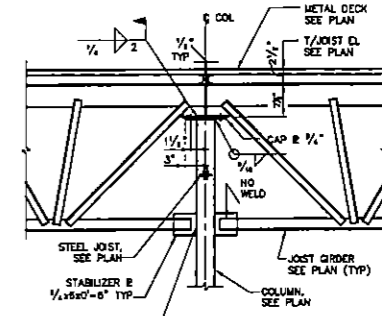
9 SECTION  
S3.3 SCALE: NTS



- NOTE:  
 1) ALL STEEL EXPOSED TO WEATHER SHALL BE HOT DIPPED GALVANIZED.  
 2) SEE DETAIL 3/S3.1 JOIST REIN FOR CONCENTRATED LOADS NOT AT PANEL POINTS.

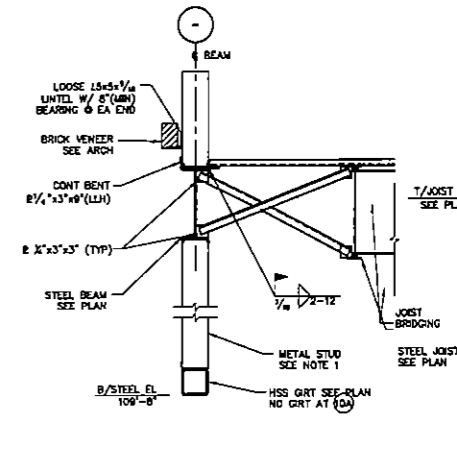
PIPE BRACE AT PARAPET RETURN

14 SECTION  
S3.3 SCALE: NTS



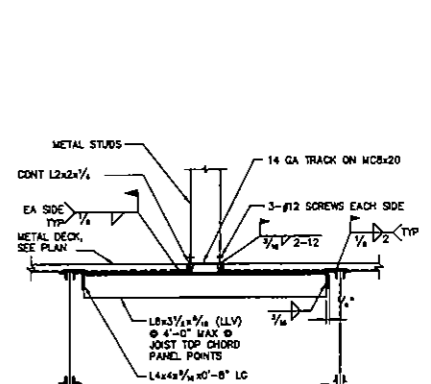
NOTE: PROVIDE ERECTION BOLTS AS REQ'D BY OSHA.

5 SECTION  
S3.3 SCALE: NTS



- NOTES:  
 1) SEE DETAIL 13/S3.3 FOR TYPICAL HSS GRT TO COLUMN CONNECTION EA END.  
 2) METAL STUD FRAMING AND CONNECTIONS TO GIRTS/EDGE ANGLES, ETC. SHALL BE DESIGNED AND SPECIFIED BY LIGHT GAGE ENGINEER. SEE GENERAL NOTES.  
 3) SEE DETAIL 2/S3.3 FOR BEAM TO COL CONNECTION.

10 SECTION  
S3.3 SCALE: NTS



15 SECTION  
S3.3 SCALE: NTS

11/10/09 17:42 09260-S3.3.dwg 1:10

SIXES AND RIDGE ROAD DEVELOPMENT  
 3422 SIXES ROAD  
 CANTON, GA 30114

IRAM PROPERTIES LLC.

To order plans, go to [www.lidirepro.com](http://www.lidirepro.com)

160 TRINITY AVENUE SW, SUITE A  
 ATLANTA, GA 30303 843-693-0610

Copyright © 2008  
 Cirrus B & Design L.L.C.

Revision & Submission Record

MOEHRIG & MANGUM  
 PROFESSIONAL ENGINEERS  
 1000 W. BROAD ST., SUITE 100  
 ATLANTA, GA 30309

SECTION AND DETAILS  
 S3.3

