



ROWAN COUNTY
EMS STATION
NO. 85

NORTH SHAVER STREET
SALISBURY, NORTH CAROLINA

COVER SHEET

OWNER APPROVAL _____ DATE _____

PLAND_18.DWG

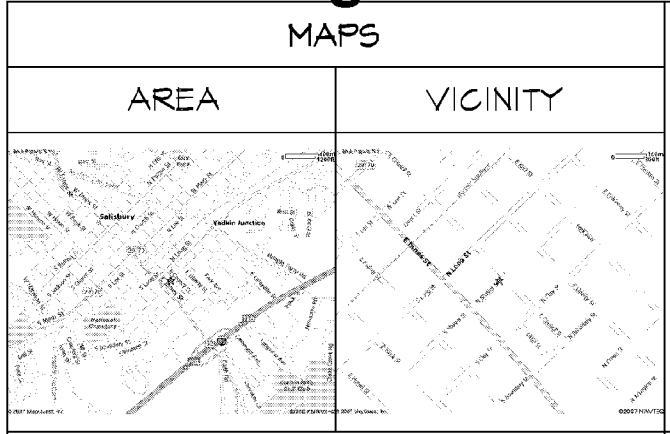
PUBLICATION OR REUSE OF THESE DRAWINGS OR ANY DETAILS THEREFROM MUST BE WITH THE WRITTEN CONSENT OF THE ARCHITECT.



DRAWN: JEP DATE: 8 AUG 2001

CHECKED: KKA REVISED:

ROWAN COUNTY EMS STATION NO. 85



TYPICAL SYMBOLS

NEW CONSTRUCTION	HOLLOW METAL
CR OR EARTH	BATT INSULATION
CRUSHED STONE OR GRAVEL	WOOD FRAMING OR BLOCKING
CONCRETE	FINISH WOOD
CONCRETE BLOCK (IN SECTION)	FLYWOOD
CONG. BLOCK (IN PLAN)	GYPSUM BOARD
BRICK	STEEL

DETAIL NUMBER
DETAIL NAME

FLOOR PLAN TITLE
SCALE: 1/4"=1'-0"

SCALE NUMBER

SECTION

"ELEVATION"
DIRECTION
DETAIL NO.
DETAIL NO.

NOTE: ELEVATIONS DRAWN FOR EACH DIRECTION ARROW FILLED.

MISCELLANEOUS SYMBOLS

DOOR NUMBER	ROOM TITLE
WINDOW TAG	ROOM NUMBER
	FINISH FLOOR ELEVATION

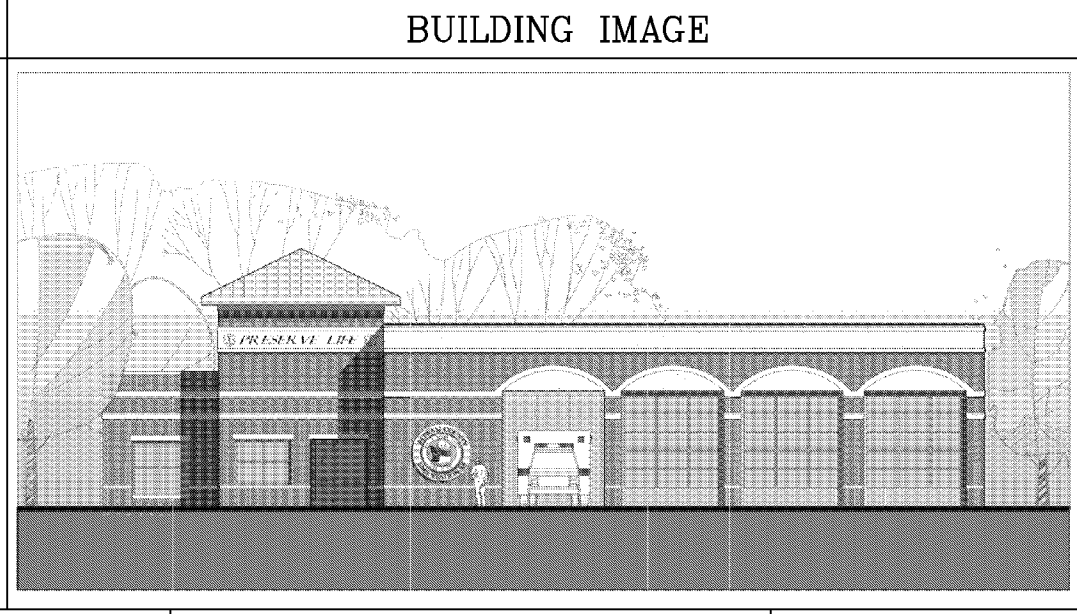
DESIGN TEAM

ARCHITECT ————— KKA ARCHITECTURE
INTERIORS PLANNING
118 E COUNCIL STREET SALISBURY, N.C. 704.642.0071

STRUCTURAL ENGINEER ————— INTERFACE FOR CONSULTING ENGINEERS, PA
8823 UNIVERSITY EAST DRIVE SUITE 200 CHARLOTTE, NC 28213 704.599.8811

MECHANICAL & PLUMBING ENGINEER ————— BOWERS CONSULTING, PA
1425 JARR ALEXANDER BLVD. SOUTH SUITE B SALISBURY, NC 28146 704.630.0976

ELECTRICAL ENGINEER ————— STURGILL ENGINEERING, PA
1 SOUTH MAIN STREET LEXINGTON, NC 27292 338.238.1249



WALL ASSEMBLIES

NON-RATED

2-HOUR RATED

EXTERIOR

UL U1005 - 2 HOUR WALL COMPOSITION:
WALL ASSEMBLY
D2 - CMU REINFORCEMENT WALL ASSEMBLY
(NOTE: PARTIAL WALL SHOWN FOR CLARITY. FULL WALL DEPTH INDICATED BY DASHED LINES)
SEE 6102 FOR ACTUAL UL-DETAIL

WALL COMPOSITION:
BRICK VENEER
AIR SPACE
WALL TIES
EXTERIOR SHEATHING
METAL STUD FRAMING
HORIZONTAL BRIDGING
BATT INSULATION
VAPOR BARRIER
GYPSUM WALLBOARD
- PAPERLESS
FINISH - SEE RFS
PERIMETER WALL BASE

WALL COMPOSITION:
BRICK VENEER
AIR SPACE
WALL TIES
EXTERIOR SHEATHING
METAL STUD FRAMING
HORIZONTAL BRIDGING
BATT INSULATION
VAPOR BARRIER
GYPSUM WALLBOARD
FINISH - SEE RFS

GENERAL NOTES

- WHERE ACRONYMS OR ABBREVIATIONS ARE USED ON THE PLANS, THEY ARE DEFINED TO MEAN THE RECOGNIZED NAME OF THE PERSON, OBJECT, MATERIAL, TYPICALLY USED IN THE CONSTRUCTION INDUSTRY. INCLUDED (BUT NOT LIMITED TO):
CMU - CONCRETE MASONRY UNIT
GYF. BD. - GYPSUM BOARD
G.C. - GENERAL CONTRACTOR
ELECT. CONTR. - ELECTRICAL CONTRACTOR
PLUMB. CONTR. - PLUMBING CONTRACTOR
HVAC - HEATING, VENTILATING AND AIR CONDITIONS
W/F - WELDED WIRE FABRIC (ALSO W/M)
RE-BAR - REINFORCING BAR
IV' - FIFTH
Ø X O.C. - AT "X" DISTANCE ON CENTER
UNO OR UN - UNLESS NOTED OTHERWISE
GI - CAST IRON
TC - TERRA COTTA
PVC - POLYVINYL CHLORIDE
MTL - METAL
NO. - NUMBER
FEC - FIRE EXTINGUISHING CABINET
EWC - ELECTRIC WATER COOLER
HM - HOLLOW METAL
D.O. - DITTO OPPOSITE
F.D. - FLOOR DRAIN
HPS - HALL PUSH BUTTON (ELEVATOR)
- SOIL BEARING CAPACITY OF 3000 PSI USED IN DESIGN. IF CONTRACTOR SUSPECTS LESSER BEARING CAPACITIES, PROMPTLY NOTIFY THE ARCHITECT.
- GENERAL CONTRACTOR TO ACT AS PROJECT COORDINATOR. SEE DIVISION (I) OF THE SPECIFICATIONS.
- CAULK ALL JOINTS AROUND DOOR AND WINDOW FRAMES AND OTHER POTENTIAL AIR, LIGHT, AND WATER PASSAGES. TYPICAL AT INTERIOR AND EXTERIOR CONDITIONS.
- THE CONTRACTOR IS RESPONSIBLE FOR ALL SITE VISITS REQUIRED TO THOROUGHLY FAMILIARIZE HIMSELF WITH THE SITE BUILDING CONDITIONS, VERIFY LOCATION OF ALL PROPERTY BOUNDARIES, ELEVATIONS, EXISTING UTILITIES, STORM LINES, CATCH BASINS, PRIOR TO SUBMITTING BID.
- APPLY AND PAY FOR ALL PERMITS, FEES, ETC. AND DISPLAY PERMITS AS PER LOCAL ORDINANCES. BUILD AND DISPLAY CONSTRUCTION SIGN AS DIRECTED IN SPECIFICATIONS SECTION 01510.
- CONSTRUCTION STAGING AREA SHALL BE LIMITED TO THE AREAS DEFINED BY PROPERTY LINES. OTHER AREAS OF THE SITE SHALL REMAIN UNOCCUPIED WITH CONSTRUCTION MATERIALS OR EQUIPMENT.
- ALL REFUSE FROM DEMOLITION AND/OR CONSTRUCTION SHALL BE REGULARLY REMOVED FROM THE SITE.
- REGRASS OR RESEED ALL AREAS OF THE SITE DAMAGED DUE TO CONSTRUCTION.
- PROVIDE BARRIERS AT ALL PLACES ON SITE WHERE REQUIRED TO PROTECT THE PUBLIC.
- GRADE LINES AND SPOT ELEVATIONS SHOWN FOR PAVING, WALKS, FINISH FLOORS SHALL BE FINISH ELEVATIONS. GRADE OUT THICKNESS OF GRAVEL, CONCRETE SLABS, PAVING, ETC.
- PITCH EXTERIOR LANDINGS WALKS FOR SURFACE WATER RUNOFF. SLOPE AWAY FROM BUILDING STRUCTURE.
- THOROUGHLY TAMP ALL PIPE TRENCHES TO FORM SOLID BEARING.
- EACH TRADE IS RESPONSIBLE FOR MAKING NECESSARY FLOOR, WALL, AND ROOF PENETRATIONS REQUIRED FOR THEIR WORK. SUCH PENETRATIONS WILL BE COORDINATED WITH THE G.C. ROOFING SUB-CRONTACTOR SHALL MAKE ALL PENETRATIONS WATER TIGHT.
- TREES SHALL REMAIN UNLESS NOTED OTHERWISE. PROTECT AGAINST DAMAGE DURING CONSTRUCTION.
- THOROUGHLY TAMP ALL PIPE TRENCHES TO FORM SOLID BEARING.

MASTER PLAN NOTES

- DIMENSIONS ARE TO FACE OF FINISH MATERIAL. CONTRACTOR SHALL ADJUST DIMENSIONS AS REQUIRED TO REFLECT ACTUAL DEPTH OF WALL COMPOSITION. ALL DIMENSIONS REFERENCED TO EXTERIOR OF THE BUILDING ARE CALLED TO FACE OF FINISH MATERIAL (MASONRY). SEE ALSO WALL SECTIONS, SHEETS AS01-AS05.
- PROVIDE LINTELS FOR ALL MASONRY OPENINGS IN ALL WALL OPENINGS INDICATED ON PLAN. INSTALL LINTELS APPROPRIATE FOR SPAN AND IMPOSED LOAD. SEE ALSO STRUCTURAL DRAWINGS FOR LINTEL SCHEDULE.
- INTERIOR WALLS SHALL BE 5 5/8" METAL STUD FRAMING TYPICAL UNLESS NOTED OTHERWISE OR SHOWN BY SYMBOLS TO BE OTHERWISE.
- DO NOT APPLY CONCRETE SEALER ON FLOORS TO RECEIVE HARD TILE FINISHES.
- MINIMUM DIMENSION ON PULL SIDE OF DOORS (KNOB SIDE) IS 18" CLEAR FOR EXTERIOR DOORS & 12" CLEAR FOR INTERIOR DOORS. MINIMUM DIMENSION ON PUSH SIDE OF DOORS (KNOB SIDE) IS 12" CLEAR, TYPICAL.
- VERIFY ALL DIMENSIONS PRIOR TO INSTALLATION OF ANY WORK.
- FIRE EXTINGUISHER CABINETS ARE LOCATED WHERE SHOWN THIS ON PLANS. FEC
- PROVIDE 2" SOUND ATTENUATION BATTS IN ALL INTERIOR WALLS UNLESS NOTED OTHERWISE.
- PROVIDE KEEP HOLES ABOVE ALL THRU-WALL FLASHING CONDITIONS @ 32" O.C. BY OMITTING MASONRY HEAD JOINTS.
- RATED CONSTRUCTION IS SHOWN ON PLANS AS HATCHED:
- PROVIDE CONTINUOUS HANDRAILS EACH SIDE ALONG STAIRS, RAMPS, AND LANDINGS, TYPICAL UNLESS NOTED OTHERWISE.
- PROVIDE SOLID BEARING AND BLOCKING WITHIN ALL STUD PARTITIONS AT WALL MOUNTED SHELVES, BASE & WALL CABINETS, CHAIR RAILS, HANDICAPPED RAILS, TOILET ACCESSORIES, ETC, FIRE EXTINGUISHER CABINETS, DOOR STOPS, ETC.

DRAWING INDEX

6100	COVER SHEET
6101	APPENDIX B: BUILDING DATA
6102	ACCESSIBILITY SUMMARY / UL DETAILS
LSPI	LIFE SAFETY PLAN
6100	SITE PLAN & STAKING PLAN
6101	GRADING PLAN & UTILITY PLAN
6102	LANDSCAPING PLAN
A100	CONTEXT PLAN / ROOM FINISH SCHEDULE
A101	DIMENSIONED PLAN / ENLARGED PLAN
A200	DOOR & WINDOW SCHEDULE
AS00	EXTERIOR ELEVATIONS
AS01	BUILDING SECTIONS
AS02	BUILDING SECTIONS
AS00	NOT USED
AS00	ROOF PLAN
AS01	WALL SECTIONS
AS02	WALL SECTIONS
AS03	WALL SECTIONS
AS04	WALL SECTIONS
AS05	WALL SECTIONS
AS06	WALL SECTIONS
A600	FLOOR PATTERNS / CEILING PATTERNS
A100	INTERIOR ELEVATIONS
A200	CABINET ELEVATIONS
A301	CABINET SECTIONS
SC10	GENERAL NOTES
5101	FOUNDATION PLAN
5102	MEZZANINE/LOFT ROOF FRAMING PLAN
5103	HIGH ROOF FRAMING PLAN
5210	FOUNDATION DETAILS
5310	FRAMING DETAILS
5510	COLD-FORMED FRAMING NOTES & DETAILS
5510	LIGHT GAGE FRAMING DETAILS & SCHEDULES
F100	PLUMBING WASTE PIPING PLAN
F101	PLUMBING WATER PIPING PLAN
F200	PLUMBING DETAILS & SCHEDULES
M100	MECHANICAL FLOOR PLAN
M101	MECHANICAL FLOOR PLAN
E100	LEGEND
E101	LIGHTING PLAN
E102	POWER PLAN
E103	SITE PLAN
E104	ELECTRICAL RISER
E105	DETAILS