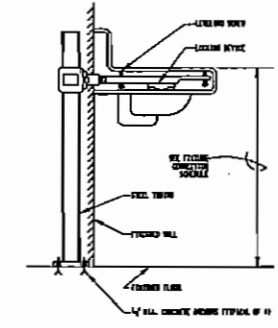


NOTES: (THIS SHEET ONLY)

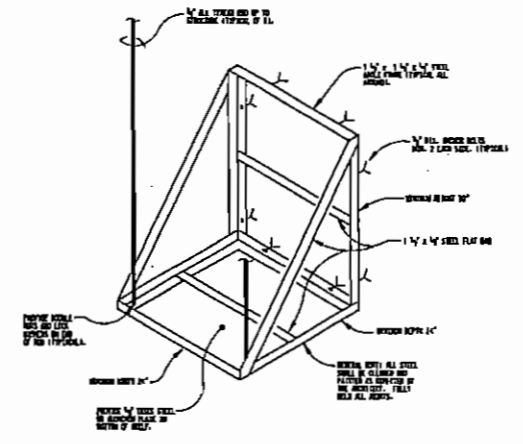
- CONTRACTOR SHALL REMOVE EXISTING PLUMBING FIXTURES AND REPLACE WITH FIXTURES AS SPECIFIED. VERIFY EXISTING WORK IS PROVIDED. PATCH WALLS AND FLOORS TO MATCH EXISTING.
- CONTRACTOR SHALL MODIFY EXISTING PIPING AS REQUIRED FOR INSTALLATION OF NEW SIZE AS SPECIFIED.
- EXISTING WATER COULDS TO REMAIN.
- CONNECT NEW 1/2" COLD WATER PIPING TO EXISTING COLD WATER PIPING AT THIS APPROXIMATE LOCATION IN ATTIC.
- TRANSFORMER LOCATED ABOVE CEILING TO OPERATE SENSOR OPERATED FLOOR VALVES. COORDINATE EXACT LOCATION WITH ELECTRICAL.

MARKS	DETAILS	NOTES	PIPE HEIGHT	COLD WATER BRANCH	COLD WATER COOL	HOT WATER BRANCH	HOT WATER COOL
P-1	WATER CLOSET	1, 3	10"	1"	1"	1"	1"
P-2	WATER CLOSET	2	10"	1"	1"	1"	1"
P-3	URINAL	2	10"	1"	1"	1"	1"
P-4	LAVATORY	3	C.T.	1/2"	1/2"	1/2"	1/2"
P-5	LAVATORY	3	3/4"	1/2"	1/2"	1/2"	1/2"
P-6	SINGLE BOWL SINK	3, 4, 5	C.T.	1/2"	1/2"	1/2"	1/2"

- FLOOR MOUNTED, ELECTRONIC FLUSH VALVE.
- WALL MOUNT, ELECTRONIC FLUSH VALVE.
- HANDICAP ACCESSIBLE.
- 1/2" x 20" STAINLESS STEEL WITH GROUNDNESS SPOUT AND LEVER HANDLES.
- MAXIMUM 5 1/2" DEEP.



LAVATORY CARRIER DETAIL
SCALE: NONE

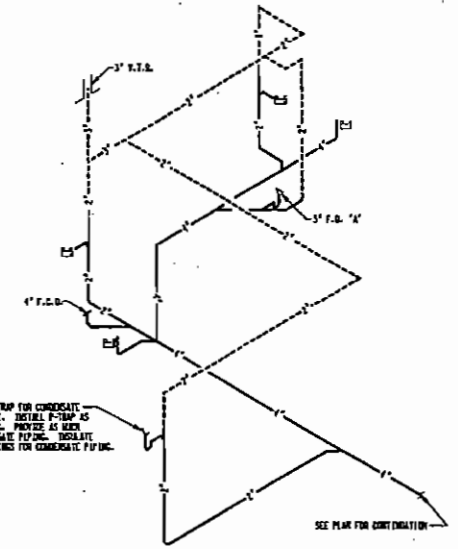


WATER HEATER SHELF DETAIL
SCALE: NONE

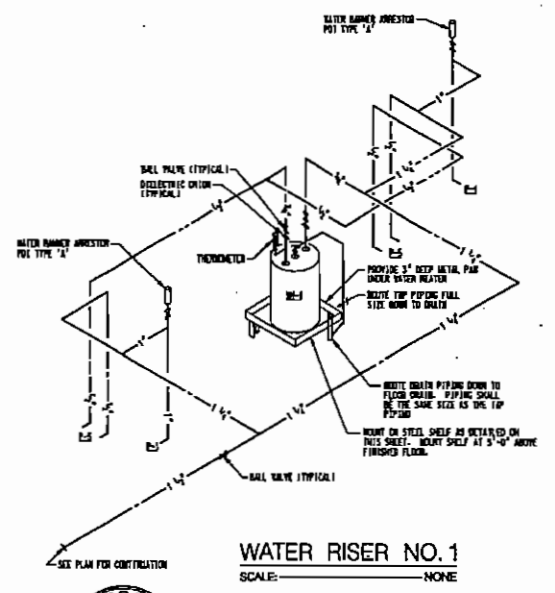
—	SOIL OR WASTE PIPING
—	VENT PIPING
—	COLD WATER PIPING
—	HOT WATER PIPING
—	BALL VALVE (2" & SMALLER)
—	BUTTERFLY VALVE (2 1/2" & LARGER)
—	VALVE IN PIPING DROP
—	PIPING DROP IN DIRECTION OF FLOW
—	PIPING RISE IN DIRECTION OF FLOW
—	CHROME PLATED HOSE BIB
—	FREEZE PROOF WALL HYDRANT
—	F.C.O. FLOOR CLEANOUT
—	O.S.C.O. OUTSIDE CLEANOUT
—	V.T.R. VENT THRU ROOF
⊙	POINT OF CONNECTION

GENERAL NOTES

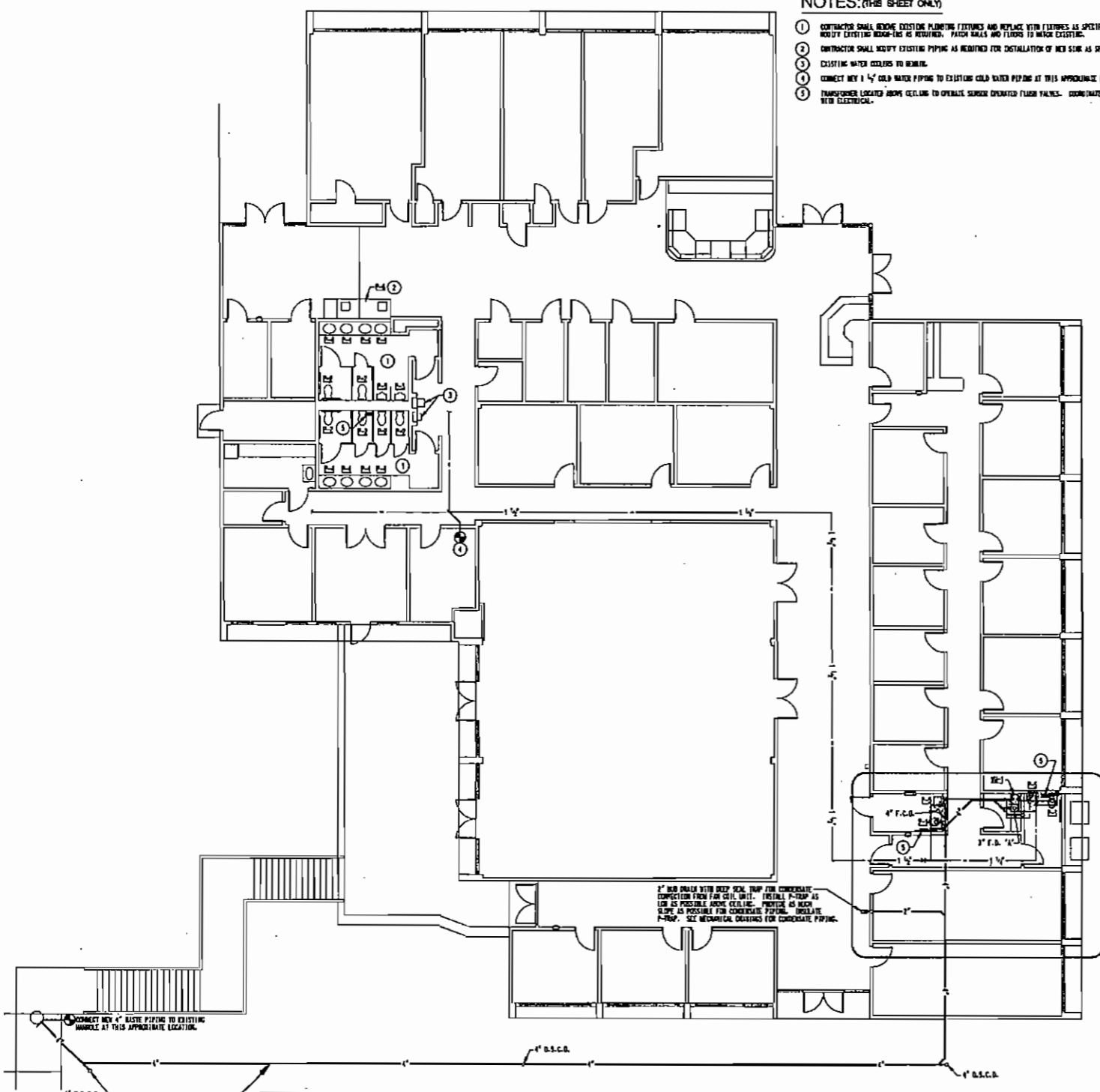
- THESE DRAWINGS ARE DIMENSIONAL AND SHALL NOT BE SCALED. SEE ARCHITECTURAL DRAWINGS FOR DIMENSIONS.
- INSTALLATION OF PIPES AND EQUIPMENT SHALL BE COORDINATED WITH ALL OTHER WORK RELATED TO THE CONSTRUCTION OF THIS FACILITY INCLUDING BUT NOT LIMITED TO: BUILDING STRUCTURE, WORK EXISTING, SUEY WORK AND PIPING, ELECTRICAL, ROOF AND OTHER FORELASHED EQUIPMENT.
- STRUCTURAL MEMBERS SHALL NOT BE PENETRATED WITHOUT APPROVAL FROM ARCHITECT.
- ABOUT ALL PIPING CONTAINING FLUIDS SUBJECT TO FREEZING WITHIN THE BUILDING INSULATION DEVELOPE OR PROVIDE HEAT TAPE.
- INSTALL SANITARY VENT PIPING SO VENTS FROM ROOF WILL BE A MINIMUM OF 15'-0" FROM ALL OUTSIDE AIR INTAKES AND A MINIMUM OF 5'-0" FROM EXTERIOR WALLS, ROOF EXPANSION JOINTS AND ROOF VENTILATION EXHAUST.
- WHERE CHASE WALLS ARE NOT FURNISHED, PIPING SHALL NOT BE INSTALLED HORIZONTALLY. AVOID CUTTING STUDS.
- THIS PROJECT INCLUDES REPAIRS TO EXISTING FACILITY. CONTRACTOR IS REQUIRED TO MAINTAIN DISRUPTION OF THE OCCUPANTS. THIS REQUIREMENT INCLUDES BUT IS NOT LIMITED TO: SCHEDULING AND PHASING OF WORK, WATER PROTECTION OR AS NECESSARY, PROVIDING TEMPORARY FACILITIES BETWEEN OCCUPIED AREAS AND CONSTRUCTION AREAS AND RESTRICTING OR REPLACING ANY CONTRACTOR DAMAGED ITEMS TO ORIGINAL CONDITIONS.



WASTE RISER NO. 1
SCALE: NONE



WATER RISER NO. 1
SCALE: NONE



PLUMBING FLOOR PLAN
SCALE: 1/8" = 1'-0"

CONTRACTOR SHALL COORDINATE INSTALLATION OF NEW WASTE PIPING WITH EXISTING WATERFIRE MAINS RELOCATED BY OWNER UNDER SEPARATE CONTRACT.

CONTRACTOR SHALL REPLACE ALL EXISTING SPRINKLERS IN THIS BUILDING WITH NECESSARY, QUICK RESPONSE SPRINKLERS AND MODIFY EXISTING SPRINKLER SYSTEM AS REQUIRED TO EXTEND INTO NEW ADDITION. CONTRACTOR SHALL COORDINATE WITH ARCHITECTURAL AND VERIFY EXACT QUANTITY NEEDED. ALL MODIFICATIONS SHALL COMPLY WITH NFPA 13.



Jinright, Ryan, & Lynn
241 SOUTH MADISON STREET
THOMASVILLE, GEORGIA 31792

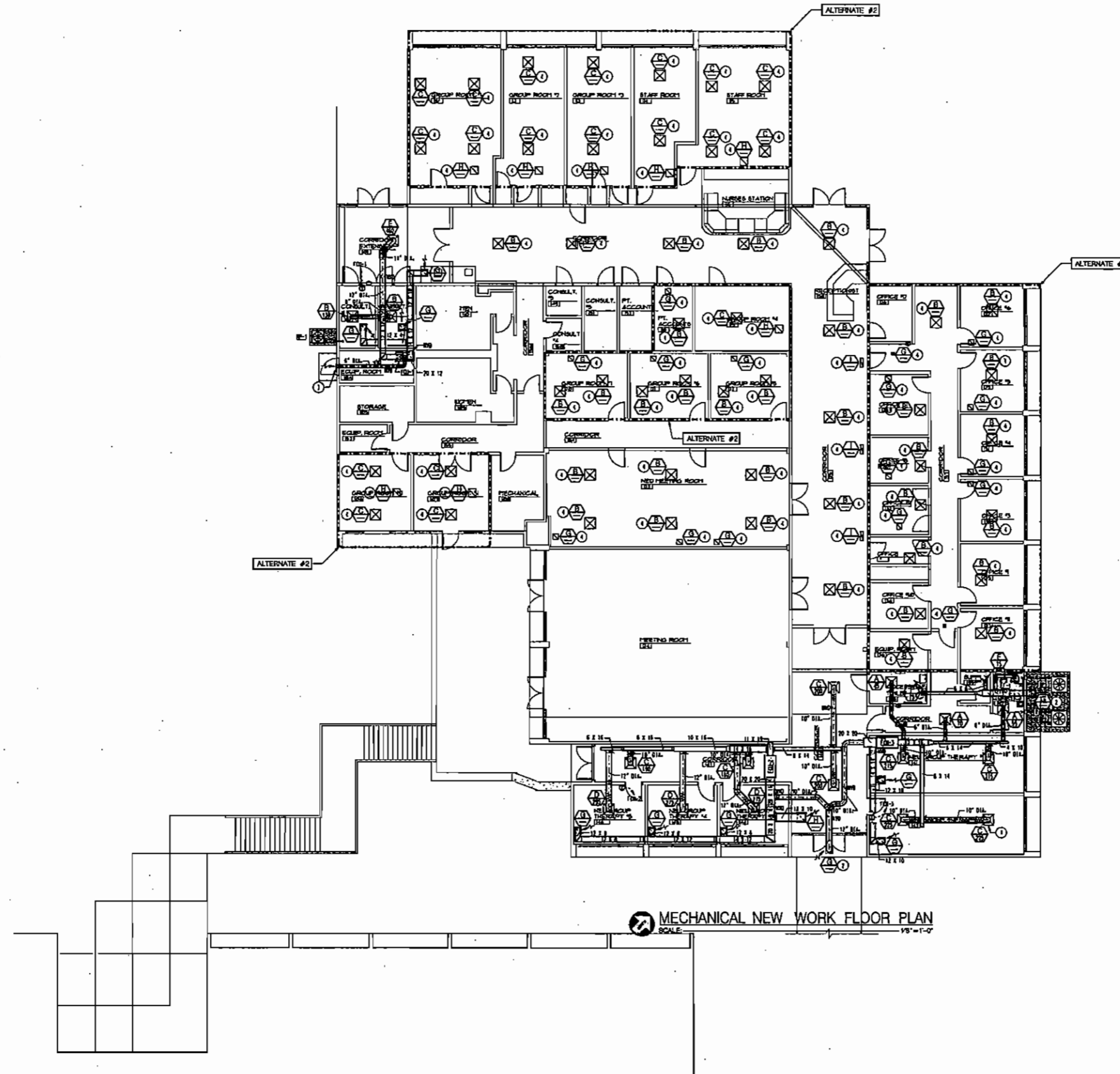
REVISION	DATE	BY	CHKD BY
1	16 JANUARY 2007	RJM	RJM

**MODIFICATIONS TO THE DAY HOSPITAL
RIDGVIEW INSTITUTE
3995 SOUTH COBB DRIVE
SMYRNA, GEORGIA**

SHEET
P1

A.H.P. ENGINEERS
ANDREWS, HAMMOCK & POWELL, INC.
260 Cherokee Lane
Suite 100
Macon, Georgia 31210
Phone (478) 405-4400
Fax (478) 405-4210
www.ahpengineers.com

- NOTES: (THIS SHEET ONLY)**
- 1. SEE DETAIL 5, SHEET 16 FOR CEILING DIFFUSER DUCT CONNECTION (TYPICAL).
 - 2. INSTALL GRILLE ON SUFFIT WITH STAINLESS STEEL SCREWS.
 - 3. REMOVE DRILL CAP COVERMENT MODEL NUMBER MC-41 WITH 1/4" DIA. DUCT CONNECTION. PROVIDE BACKUP/STAY-IN-PLACE.
 - 4. REMOVE EXISTING CEILING GRILLE AND REPLACE WITH NEW DRILLS AS TAGGED. CORRECT EXISTING DUCTWORK TO NEW DRILLS. COORDINATE EXISTING GRILLE LOCATION WITH NEW CEILING AND LIGHTS. PROVIDE DUCT TRANSITIONS AND ADDITIONAL DUCTWORK AS NECESSARY TO INSTALL NEW DRILLS.



MECHANICAL NEW WORK FLOOR PLAN
SCALE: 1/8" = 1'-0"



Jimright, Ryan, & Lynn
241 SOUTH MADISON STREET
THOMASVILLE, GEORGIA 31792

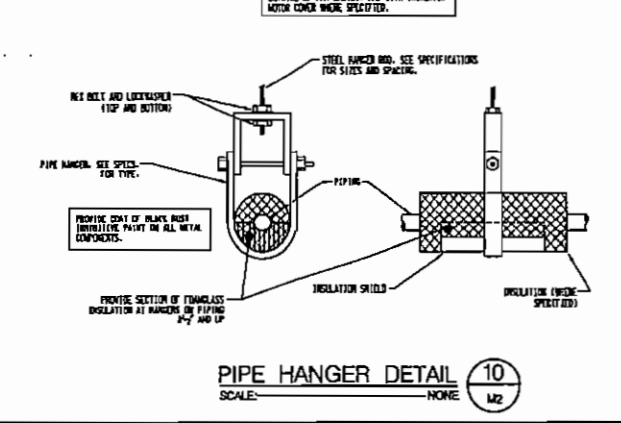
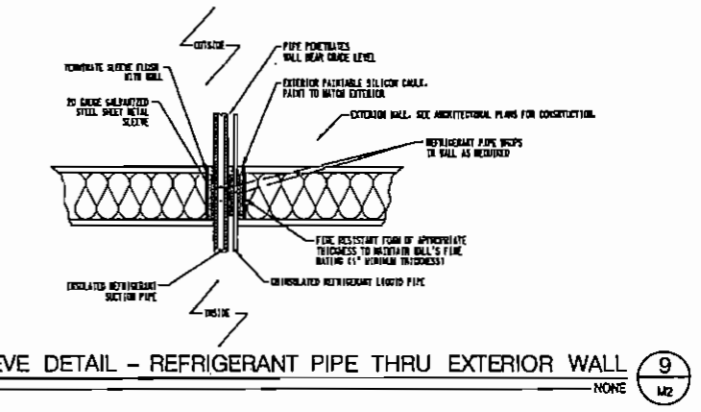
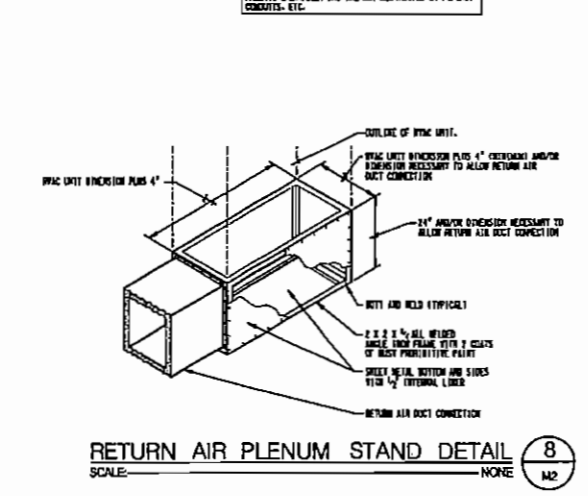
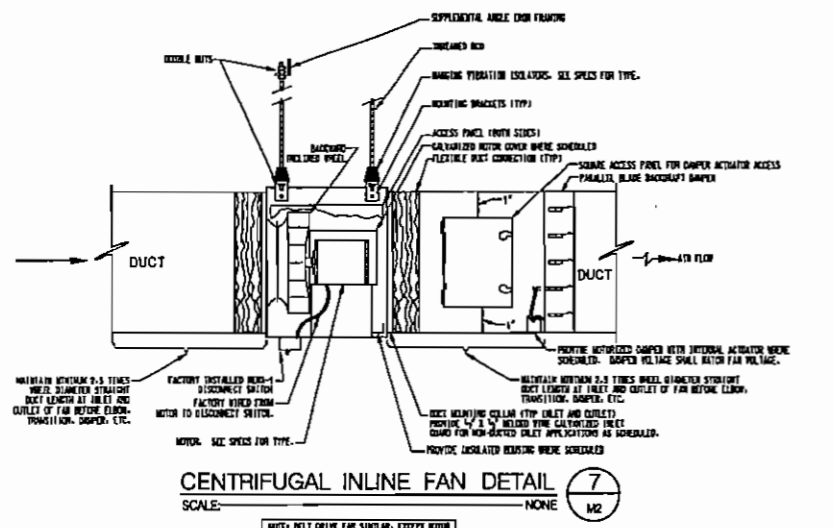
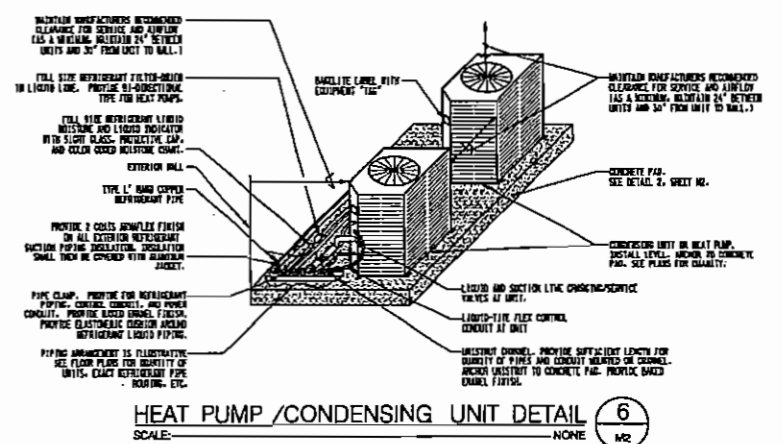
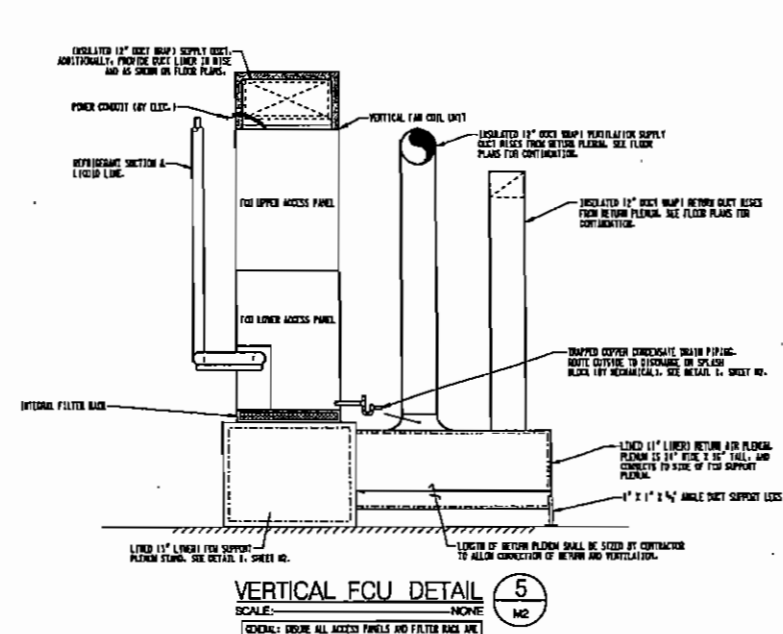
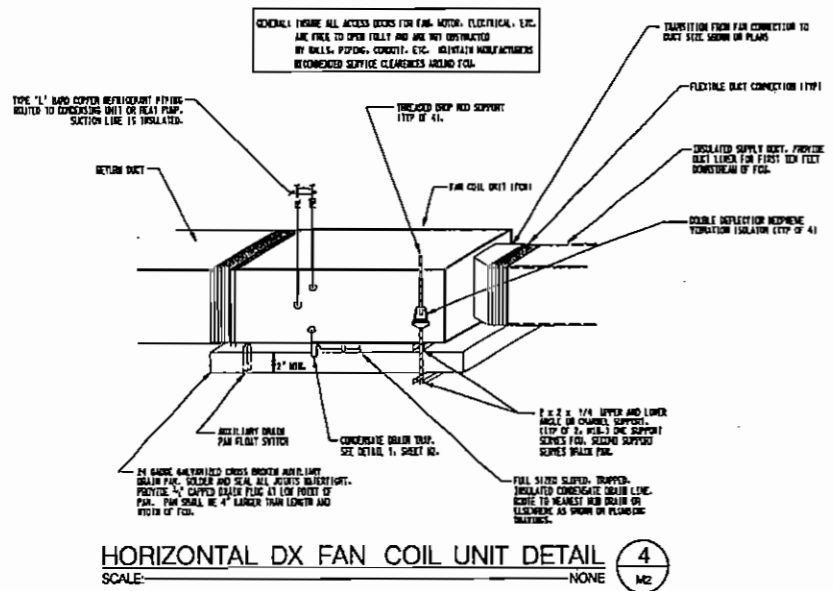
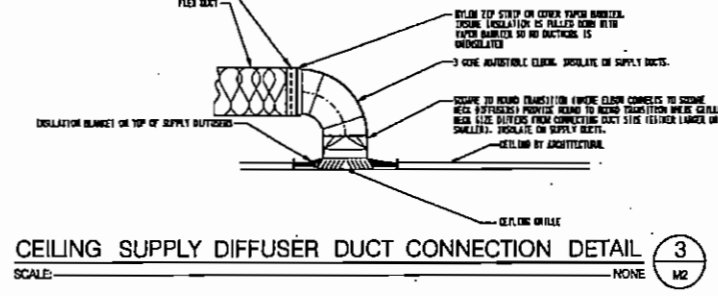
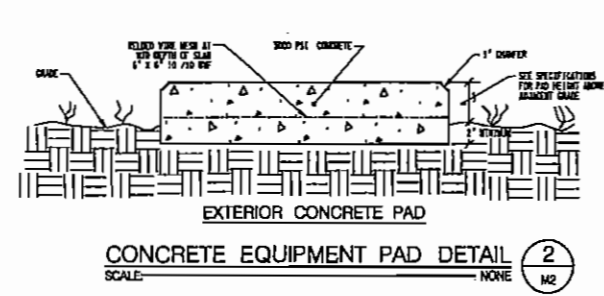
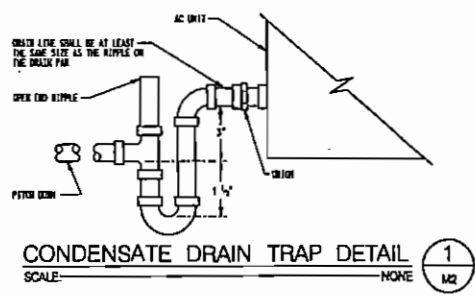
CAD FILE
DRAWN BY DRL/MRS
CHECKED BY JCS
DATE 16 JANUARY 2007
REVISION
REVISION
REVISION

**MODIFICATIONS TO THE DAY HOSPITAL
RIDGEVIEW INSTITUTE**
3995 SOUTH COBB DRIVE
SMYRNA, GEORGIA

GEORGIA
AH&P
CONSULTING ENGINEERS
ANDREWS, HAMMOCK & POWELL, INC.
290 Peachtree Lane
Suite 100
N.W.
Atlanta, Georgia 30303
Phone: 404-525-8281
Fax: 404-525-8210
www.ahp.com

SHEET
M1

TO ORDER PLANS GO TO WWW.AH&P.COM



ALPHA
Jinright, Ryan, & Lynn
 241 SOUTH MADISON STREET
 THOMASVILLE, GEORGIA 31792

CAD FILE
 DRAWN BY DLR/ARS
 CHECKED BY JCS
 DATE 16 JANUARY 2007
 REVISION
 REVISION
 REVISION

**MODIFICATIONS TO THE DAY HOSPITAL
 RIDGEVIEW INSTITUTE
 3995 SOUTH COBB DRIVE
 SMYRNA, GEORGIA**

SHEET
M2

TO ORDER PLANS GO TO WWW.AH&P.COM
 ANDREWS, HAMMOCK & POWELL, INC.
 250 Charter Lane, Suite 102
 Marietta, Georgia 30151
 Phone (478) 435-9301
 Fax (478) 405-9210
 www.ahp.com

FAN COIL UNITS

TAG	COILER MODEL NUMBER	TOTAL COOLING MBH	SENSIBLE COOLING MBH	TOTAL SUPPLY CFM	IN. DIA.	INT. VTE. CAP. MBH	AIR VTE. FT	APPROX. ESP (IN. WG)	BLOWER MOTOR HP	EXTERNAL AIR TEMP.		NOTES
										72F	78F	
FCD-1	F400004	21.1	14.5	700	10	13.6	4.176-9	0.4	1/2	77.5	64.5	14231-435-617-8-9-10
FCD-2	F400004	14.5	31.1	1000	10	26.8	6.2/18.0	0.4	3/4	72.4	61.4	14231-435-617-8-9-10-11
FCD-3	F400004	33.1	24.5	1000	10	15.0	6.5/9.0	0.5	1/2	75.9	66.2	14231-435-617-8-9-10-11

- VERTICAL, DOWN THRU FAN COIL UNIT WITH SINGLE WALL CONSTRUCTION AND 1" THICK INSULATION. PROVIDE BAKER EMERALD FINISH. SEE DETAIL 6, SHEET NO.
- COOLING CAPACITIES BASED ON AIR ENTERING EVAPORATOR AT SCHEDULED CONDITIONS AND MATCHED WITH DESIGNATED HEAT PUMP UNIT.
- HEATING CAPACITY BASED ON 70°F RETURN AIR AND OUTDOOR AIR AT 17°F, AND MATCHED WITH INDICATED HEAT PUMP UNIT.
- PROVIDE COIL COILING WITH FACTORY INSTALLED THERMOSTATIC EXPANSION VALVE FOR REFRIGERANT CONTROL.
- SCHEDULED CAPACITIES ARE OVERALL CAPACITIES FOR MATCHED HEAT PUMP UNIT AND EVAPORATOR COIL WITH 2% LINE LOSS.
- EXTERNAL STATIC PRESSURE SCHEDULED VALUES MAY INCLUDE NET COILING LOSS, GASING, ELECTRIC HEAT COIL, OR FILTER LOSSES. BLOWER MOTOR MUST OVERCOME C.S.P. AT CONNECTED POINTS.
- PROVIDE UNIT MOUNTED FACTORY PROVIDED FIELD INSTALLED ELECTRIC STRIP HEATERS OF 1/2" OR 3/4" VOLTAGE. PROVIDE SINGLE POINT UNIT POWER CONNECTION FOR UNIT UNIT.
- PROVIDE FAN MOTOR CONTACTOR, THERMAL STOP, AND ALL CONTROLS.
- PROVIDE EXTERNAL FILTER RACK DESIGNED TO ACCOMMODATE 1" FILTERS.
- PROVIDE VISIBLE SLOPED REVERSIBLE CONDENSATE DRAIN PANS. PROVIDE SLOPED CONDENSATE DRAIN. SEE CONDENSATE DRAIN TRAP DETAIL.
- HORIZONTAL, DOWN THRU FAN COIL UNIT WITH SINGLE WALL CONSTRUCTION AND 1" THICK INSULATION. PROVIDE BAKER EMERALD FINISH. SEE DETAIL 6, SHEET NO.

GRILLES

TAG	PRICE MODEL NUMBER	SIZE OR LENGTH	FINISH	THICK	NOTES
A	SC2	6" DIA.	WHITE	4-80T	1131-4-6
B	SC2	8" DIA.	WHITE	4-80T	1131-4-8
C	SC2	10" DIA.	WHITE	4-80T	1131-4-10
D	SC2	12" DIA.	WHITE	4-80T	1131-4-12
E	SC2	14" DIA.	WHITE	4-80T	1131-4-14
F	82	6 X 6	WHITE	---	215-6
G	82	12 X 12	WHITE	---	215-6
H	82	18 X 18	WHITE	---	215-6
I	82	24 X 24	WHITE	---	215-6

- EXPOSED FACE STEEL CEILING SUPPLY DIFFUSER WITH FIXED 4-WAY AIR DISCHARGE PATTERN.
- ALL ALUMINUM 1" X 1" X 1" "TEAR DRAIN" CONDENSATE/RETURN GRILLE.
- PROVIDE EXPOSED BLADE DAMPER.
- IN 24 X 24 PANEL FOR LAY-IN CEILING.
- FLANGED FRAME FOR SURFACE MOUNTING.
- NO LENSEL NOT TO EXCEED 10.5.

HEAT PUMP UNITS

TAG	CARRIER MODEL NO.	TOTAL COOLING MBH	SYSTEM STAGES CAPACITY	HEATING CYCLE HEATING MBH	NOTES
HP-1	ZPH0024	21.1	1	SS	14231-435-617-8-9
HP-2	ZPH0040	44.0	1	SS	14231-435-617-8-9-10
HP-3	ZPH0066	33.1	1	SS	14231-435-617-8-9

- COOLING CAPACITIES BASED ON 80°F AMBIENT AIR TEMPERATURES.
- ALL REFRIGERANT LINES TO BE INSTALLED AND SIZED PER MANUFACTURER'S INSTALLATION RECOMMENDATIONS.
- SCHEDULED CAPACITIES ARE OVERALL CAPACITIES REQUIRED FOR MATCHED HEAT PUMP AND EVAPORATOR COIL WITH 2% RECTION LINE LOSS.
- PROVIDE INTERNAL CONTROLS INCLUDING CONTACTORS, OVERCURE HEATER, 5 MINUTE COMPRESSION TIME DELAY RELAY AND COMPRESSOR OVER TEMPERATURE (OVERTEMP) PROTECTION.
- PROVIDE ALL CONTROLS, ACCESSORIES AND SYSTEM IDENTIFICATIONS TO PERMIT COOLING OPERATION TO SPECIFIED TEMPERATURE.
- PROVIDE LEADS AND RETURN LINE SERVICE VALVES/GAS PIPES.
- PROVIDE HIGH PRESSURE SWITCH AND LOW PRESSURE SWITCH.
- PROVIDE LINE ISOLATED, TEMPERATURE TOLERANT DEFROST CONTROLS.
- SEE DETAIL 6, SHEET NO.

EXHAUST FANS

TAG	OVERHEAD MODEL NO.	CFM	FAN STATIC PRESSURE IN W.G.	FAN RPM	MOTOR HP	MAX. SPEED	NOTES
EF-1	50-40-0	725	0.3	1130	1/2	6	14231-4

- IDENTIFY AND LABEL EXHAUST FOR WITH DISCHARGE MOUNTED BASEMENT DAMPER. PROVIDE MOUNTING BRACKETS AND SUPPORT FROM STRUCTURE. SHIP WITH INSULATION PROTECTORS. SEE DETAIL 7, SHEET NO.
- SHIELD DRIVE.
- PROVIDE FACTORY MOUNTED DISCONNECT SWITCH.
- PROVIDE SPEED CONTROLLER.

LEGEND

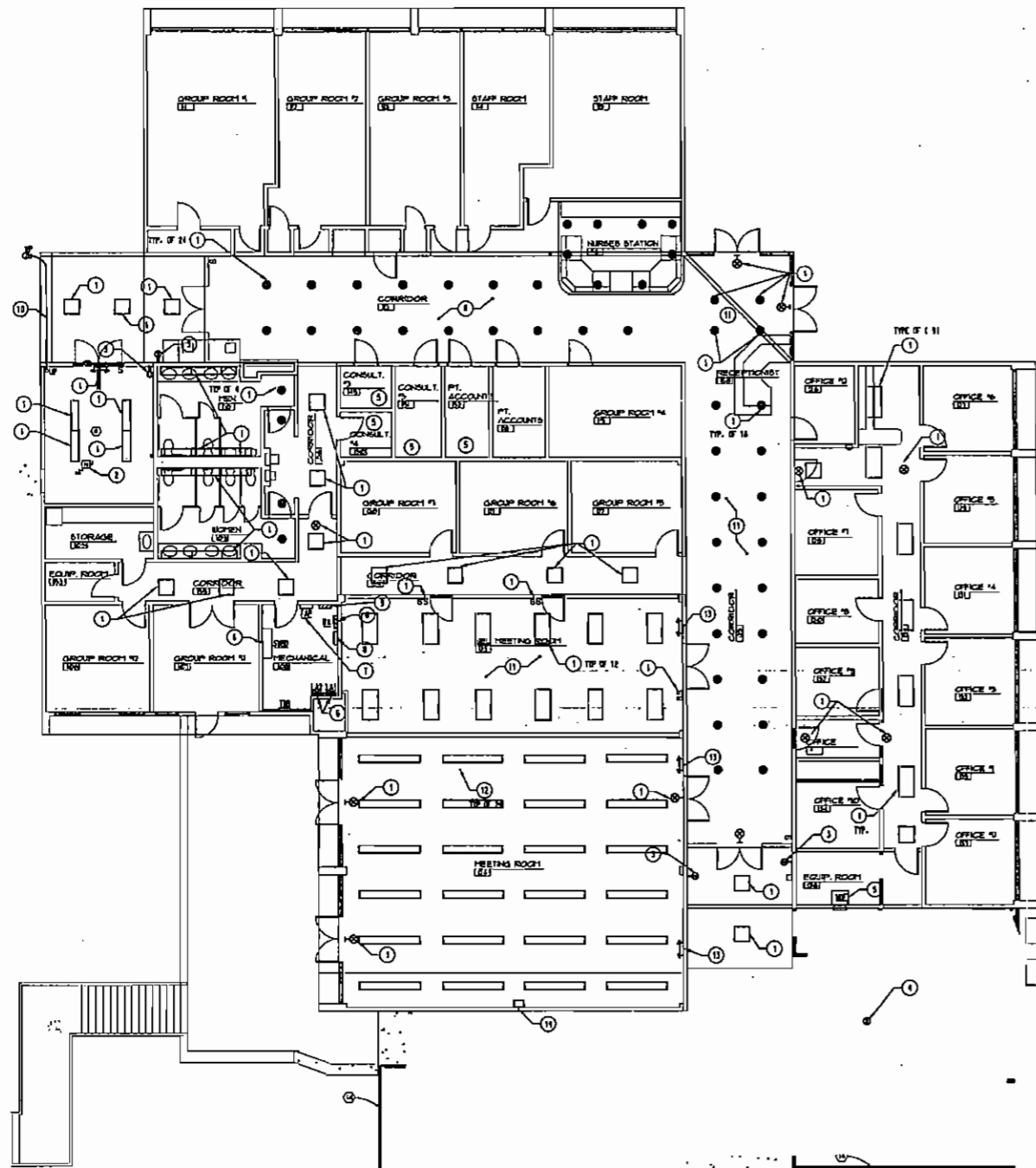
- GRILLE, REVERSIBLE, DIFFUSER DESIGNATION ABOVE WITH CTR SHOWN BELOW FOR TAG MOUNT TO BALANCE DEVICE AT
- SHEET SIZE: FIRST DIMENSION IS SIZE DRAWN
- ALSO ROUND DIMENSION ON FLEX PIPING
- FLEXIBLE ROUND DUCTWORK
- RECTANGULAR - TO - ROUND DUCT TRANSITION
- FLEXIBLE CONNECTION
- RECTANGULAR/FLEXIBLE DUCT ELBOW - 45° TRUCK OR 1" TRUCK, RESPECTIVELY
- SQUARE ELBOW WITH TURNING VANES
- 45° BRANCH OFF FITTING
- VARIABLE VOLUME DAMPER (EXPOSED BLADE)
- AUTOMATIC VOLUME DAMPER (POWERED OPEN, SPOOLED CLOSE)
- ACCESS PANEL, 18" SIDE OF DUCT
- WALL SLEEVE FOR TRANSFER OF RETURN AIR (LOCATED ABOVE CEILING)
- DOOR GRILLE
- BELLWOUTH TAKE-OFF COLLAR AT PEN-OUT/REBALANCING DAMPER
- 45° FITTING (ASSEMBLY WITH BALANCING DAMPER)
- SUPPLY DUCT TO OR FROM ABOVE
- RETURN OR EXHAUST DUCT TO OR FROM ABOVE
- INDICATES EQUIPMENT OR UNIT
- CONCRETE FND. SEE DETAIL 3, SHEET NO.
- DUCT OR PIPE DETECT? APPROX. HEAD INDICATES DIRECTION OF DISE
- RETURN OR EXHAUST AIR FLOW
- REVERSIBLE THERMOSTAT
- POWER CONTACTOR PROVIDED BY MECHANICAL
- CONDENSATE DRAIN PIPING
- REFRIGERANT PIPING
- PIPE SLEEVE THRU WALL OR FLOOR. SEE DETAIL 9, SHEET NO.
- WRAPPING ON RISER PIPE
- PIPE TO OR FROM ABOVE
- ELBOW - 45° ELBOW - 90°
- TEE
- 90° BELL-NOY BELL
- STAINLESS STEEL
- FEET PER MINUTE
- CURVE FEET PER MINUTE
- CENTRUM AIR
- RETURN & EXHAUST
- APPROX.
- EXTERNAL STATIC PRESSURE (EXCESS WHEEL LOSS)
- REWORKED
- REWORKED PER MINUTE
- UNLESS NOTED OTHERWISE
- ALONG FLOORING FLOOR
- UNCOATED DUCT 1/2"
- GALLONS PER MINUTE
- ATLANTA
- TEMPERATURE DIFFERENCE
- RETURN ELEVATION, FAN ELEVATION
- POUNDS PER HOUR
- LIMIT OF SCOPE OF WORK
- SECTION OR DETAIL IDENTIFICATION NUMBER
- SHEET NUMBER OR TRUCK SECTION OR DETAIL IS DRAWN

- ### GENERAL NOTES
- SEE ARCHITECTURAL AND STRUCTURAL DRAWINGS FOR EXACT BUILDING ARRANGEMENT, DIMENSIONS AND DETAILS. THESE DRAWINGS ARE DIAGNOSTIC AND ARE NOT TO BE SCALED.
 - COORDINATE DUCT AND PIPE SYSTEM AND EQUIPMENT LOCATION WITH PLUMBING AND ELECTRICAL INSTALLATIONS AND WITH MECHANICAL, STRUCTURAL, MECHANICAL, ETC. SET BACKS AND SHIRT SLEEVES AS REQUIRED TO AVOID CONFLICTS WITH OTHER INSTALLATIONS.
 - COORDINATE LOCATION OF CEILING RECEPTS WITH LIGHTING LAYOUT, SPRINKLER HEADS AND CEILING GRID SYSTEMS AND APPURTENANCES. REFER TO ARCHITECTURAL RELATED CEILING PLANS FOR EXACT LOCATION.
 - DUCT SIZES INDICATED ON THE PLANS ARE CLEAR INSIDE DIMENSIONS REQUIRED. WHERE CLEAR IS INDICATED, INCREASE DUCT SIZE.
 - REFER TO THE ELECTRICAL DRAWINGS FOR VOLTAGE, PHASE, INSTANTANEOUS CURRENT LOAD, JUNCTIONS, AND CONNECTION ARRANGEMENTS (SINGLE OR MULTI-POINT CONNECTION, ETC.) OF ALL MECHANICAL EQUIPMENT PRIOR TO ORDERING/INSTALLING EQUIPMENT.
 - SUPPORT ALL DUCTS, PIPING AND EQUIPMENT FROM PRIMARY BUILDING STRUCTURAL MEMBERS AND PROVIDE SUPPLEMENTAL STRUCTURAL FRAMING AS REQUIRED BETWEEN PRIMARY BUILDING STRUCTURAL MEMBERS TO SUPPORT ALL SYSTEMS INSIDE THE BUILDING.
 - PROVIDE PIPE SLEEVE THRU ALL WALLS AND THRU ALL FLOOR SLABS. SEE DETAIL 9, SHEET NO.
 - PROVIDE PIPE HANGERS FOR ALL SLOTTED PIPING AS SHOWN IN DETAIL 10, SHEET NO.

ARCHITECTS
AH&P
INC.
Jinright, Ryan, & Lynn
 241 SOUTH MADISON STREET
 THOMASVILLE, GEORGIA 31792

CAD FILE
 DRAWN BY: DRJ/MS
 CHECKED BY: JCS
 DATE 16 JANUARY 2007
 REVISION
 REVISION
 REVISION

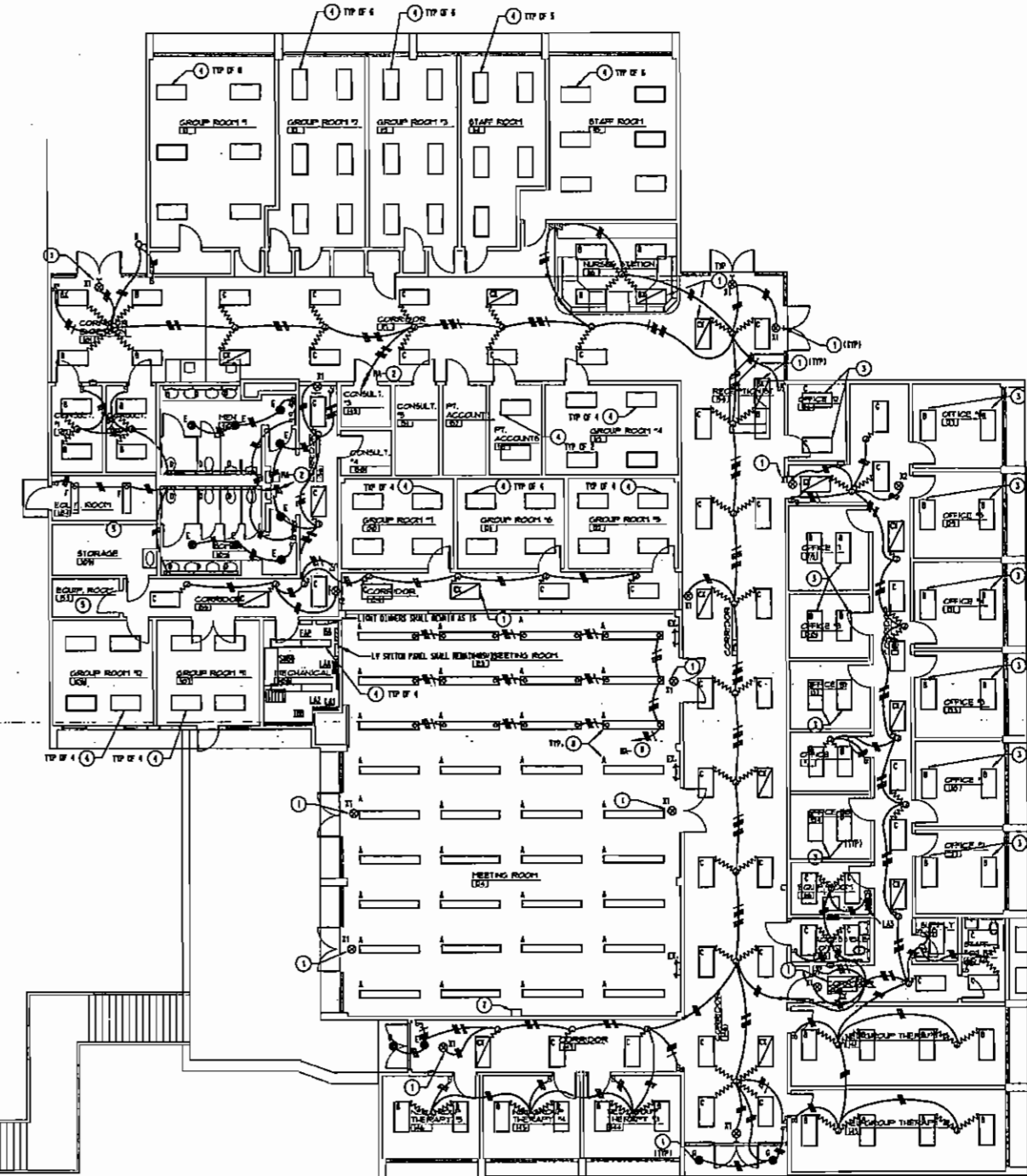
MODIFICATIONS TO THE DAY HOSPITAL
RIDGEVIEW INSTITUTE
 3995 SOUTH COBB DRIVE
 SMYRNA, GEORGIA



ELECTRICAL DEMO PLAN
SCALE: 1/8" = 1'-0"

NOTES: (DEMO PLAN ONLY)

- 1 REMOVE LIGHT FIXTURE AND ASSOCIATED LIGHT SYSTEM. REMOVE POWER CABLES. BACK TO SOURCE OF POWER.
- 2 REMOVE DISCONNECT AND DISCONNECT UNIT NEARBY. REMOVE POWER CABLES. BACK TO SOURCE OF POWER.
- 3 REMOVE REPEATER CONDUITANCE OUTLET.
- 4 REMOVE AUDIO SPEAKER AND ASSOCIATED WIRE AND CONDUIT. REMOVE POWER CABLES. BACK TO SOURCE OF POWER.
- 5 COMPUTER "RACK" SHALL REMAIN AS IS.
- 6 ELECTRICAL PANELS SHALL REMAIN AS IS.
- 7 FIRE ALARM PANEL - NOTIFIER APPROVED SHALL REMAIN AS IS.
- 8 LOW VOLTAGE RELAY LIGHTING PANEL SHALL REMAIN AS IS.
- 9 LIGHTING DIMMERS SHALL REMAIN AS IS.
- 10 REMOVED LOW VOLTAGE CONDUIT/CHANNEL FOR WIRE CONTROL AS NOTED.
- 11 THIS CEILING GRID IS SCHEDULED FOR REMOVAL. SEE ARCHITECTURAL PLAN FOR NEW CEILING GRID.
- 12 REMOVE LIGHT FIXTURES AND REPLACE WITH NEW FIXTURES IN SAME LOCATION PER NEW WORK PLAN. REMOVE EXISTING 277 VOLT LIGHT CIRCUITS.
- 13 BATTERY LIGHT "BACKUPS" SHALL REMAIN AS IS.
- 14 REMOVE EXISTING LOW VOLTAGE SWITCHING PANEL AND REPLACE ASSOCIATED LOW VOLTAGE RELAYS WITH NEW RELAYS "BACKUP" PER SCHEDULE. SEE NOTE 8 FOR LOCATION OF RELAYS.
- 15 EXISTING POST MOUNTED LIGHT FIXTURES SHALL BE RELOCATED PER NEW WORK PLAN. SEE ARCHITECTURAL DRAWING FOR EXACT LOCATION. REMOVE WIRE/CONDUIT. CHECK GROUND TO NEW LOCATION.



ELECTRICAL NEW WORK LIGHTING PLAN
SCALE: 1/8" = 1'-0"

NOTES: (LIGHTING PLAN ONLY)

- 1 THIS FIXTURE SHALL REMAIN IDENTIFIED.
- 2 ROUTE WIRE/CONDUIT TO EXISTING PANEL. PROVIDE 30A/TP C.B. AS NOTED.
- 3 AS ALTERNATE NO. 1 ARCHITECT IS RELOCATING CEILING OR THIS AREA, THIS CONTRACTOR SHALL PRICE AS ALTERNATE NO. 1. PROVIDE NEW LIGHT FIXTURES AS SHOWN AND CONNECT TO EXISTING CIRCUIT. REMOVE EXISTING LIGHT FIXTURES AND TURN OVER TO OWNER IF ALTERNATE NO. 1 IS ACCEPTED.
- 4 AS ALTERNATE NO. 2 ARCHITECT IS RELOCATING CEILING TILES THIS AREA, THIS CONTRACTOR SHALL PRICE AS ALTERNATE NO. 2. REMOVE LIGHT FIXTURE. CLEAN, RELAMP A REINSTALL FIXTURE IN CEILING GRID OR EXISTING CONDUIT AS SHOWN. CEILING GRID SHALL REMAIN AS IS.
- 5 NO WORK IN THIS SPACE.
- 6 RELOCATED POST MOUNTED OUTDOOR LIGHT. SEE NOTE 10. DEMO PLAN.
- 7 EXISTING LOW VOLTAGE LIGHT CONTROL PANEL.
- 8 SYSTEM "TOP LIGHTS" SEPARATE FROM "DOWN LIGHTS".
- 9 ROUTE WIRE/CONDUIT TO LOW VOLTAGE RELAY IN POWER ROOM AND CONTROL WITH LIGHT CONTROL PANEL LOW VOLTAGE SWITCH SEE NOTE 7.



Jinright, Ryan, & Lynn
241 SOUTH MADISON STREET
THOMASVILLE, GEORGIA 31792

CAD FILE
DRAWN BY: CIS
CHECKED BY: EDM
DATE 16 JANUARY 2007
REVISION
REVISION
REVISION
REVISION

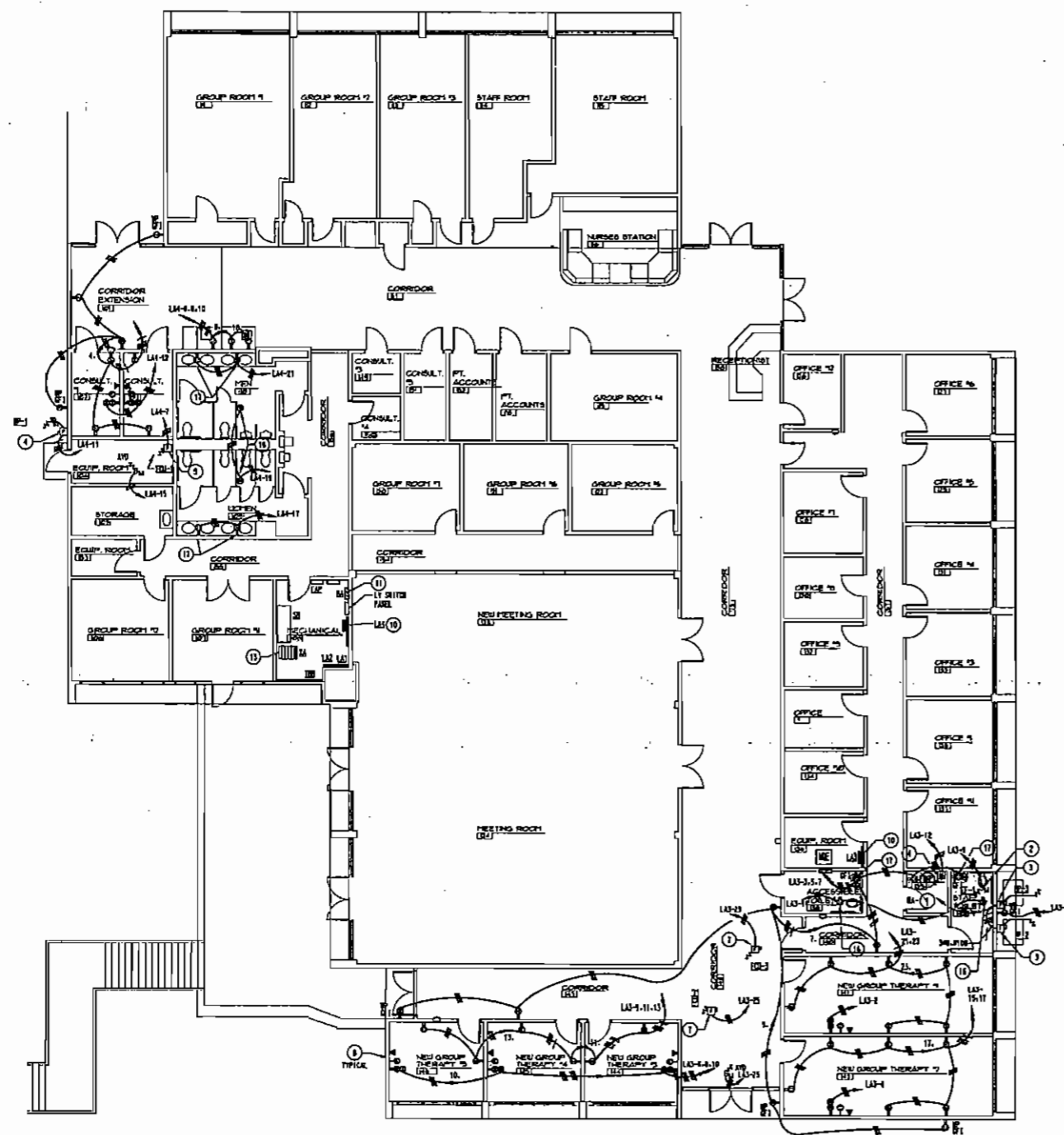
**MODIFICATIONS TO THE DAY HOSPITAL
RIDGEVIEW INSTITUTE
3995 SOUTH COBB DRIVE
SMYRNA, GEORGIA**

SHEET
E1

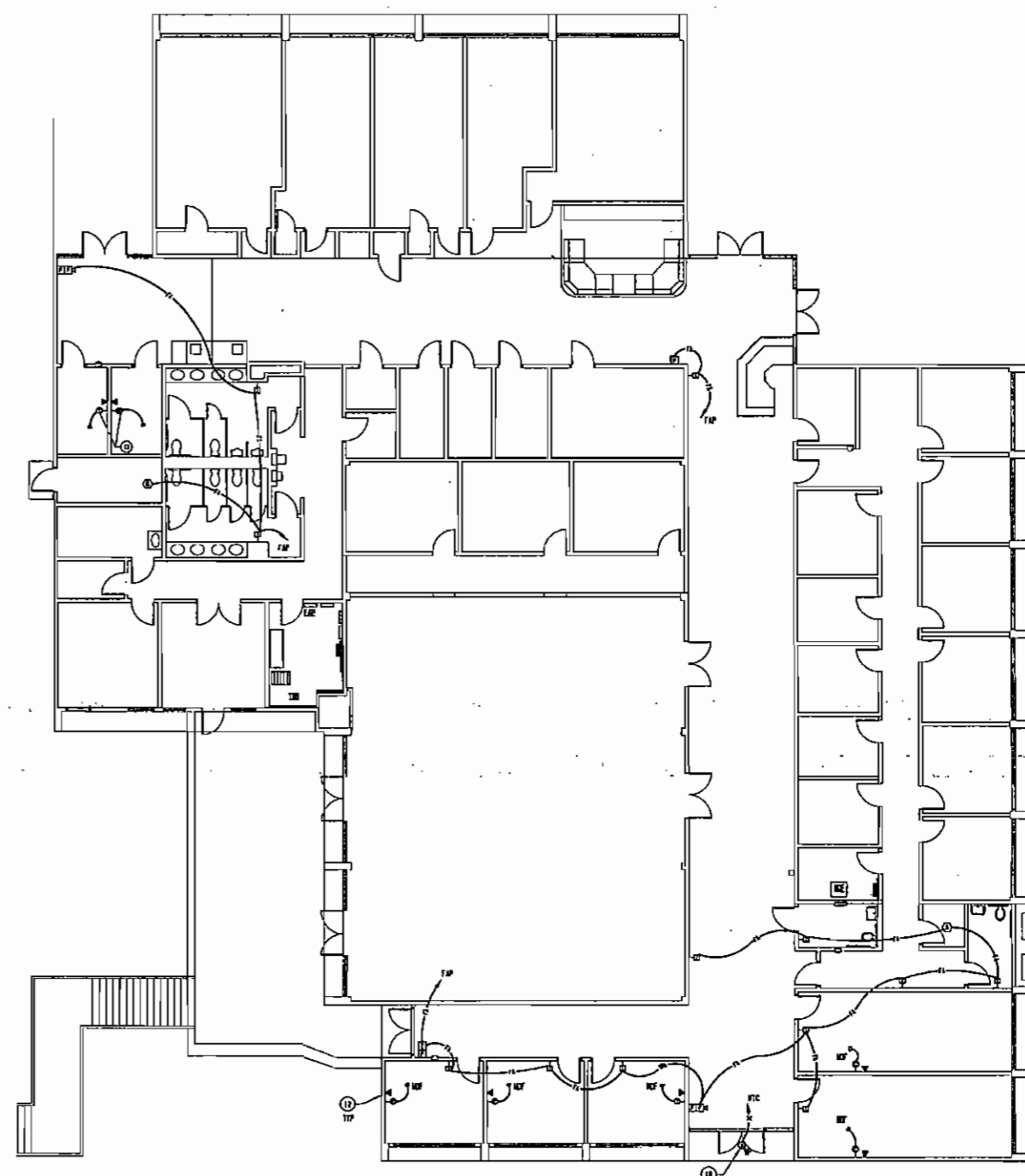
TO ORDER PLANS GO TO WWW.AH&P.COM



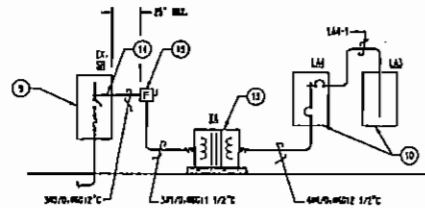
ANDREWS, HAMMOCK & POWELL, INC.
250 Chief of Lane
Suite 100
Marietta, Georgia 30151
Phone (478) 408-8300
Fax (478) 408-8210
WWW.AHP&P.COM



ELECTRICAL NEW WORK POWER PLAN
SCALE: 1/8" = 1'-0"



ELECTRICAL NEW WORK LOW VOLTAGE PLAN
SCALE: 1/8" = 1'-0"



ELECTRICAL POWER RISER DIAGRAM
SCALE: NONE

NOTES: (THIS SHEET ONLY)

- 1) MOUNT 300/300/1 3/4" TO PANEL AS INDICATED. PROVIDE A 400/300, 14 BALE C.B. FOR EXISTING PANEL.
- 2) MOUNT THREE DISCONNECT AND SWITCH CONTROLLER PROVIDED BY DIVISION 15.
- 3) PROVIDE A 300/300 HEAVY DUTY FUSED DISCONNECT TO BE IN 3A ENCLOSURE. FUSE AT 150 AMP.
- 4) PROVIDE A 300/300 HEAVY DUTY FUSED DISCONNECT BY THE 3A IN NEW 3A ENCLOSURE. FUSE AT 150 AMP.
- 5) PROVIDE A 300/300 HEAVY DUTY FUSED DISCONNECT IN NEW 1 ENCLOSURE. FUSE AT 150 AMP.
- 6) MOUNT 400/300/1 1/2" TO PANEL AS INDICATED. PROVIDE A 300/300, C.B. FOR EXISTING PANEL.
- 7) PROVIDE A 300/300 HEAVY DUTY FUSED DISCONNECT IN A NEW 1 ENCLOSURE.
- 8) LOW VOLTAGE OUTLETS SHOWN FOR COORDINATION ONLY.
- 9) EXISTING PANEL: 400/277V, 3P, 4W
- 10) PROVIDE A NEW PANEL PER SPECIFICATION 14700 AND PANEL SCHEDULE.
- 11) EXISTING PANEL 300/300, 14 BALE C.B.
- 12) PROVIDE A SINGLE 3/4" CUPTE COVER// FOR TELEPHONE AND COMPUTER CORDING. 9750 OUT TO ABOVE ACCESSIBLE CEILING.
- 13) PROVIDE A TRANSFORMER DELTA 200/120V BYE. 115% RISE OUT TYPE TRANSFORMER PER SPECIFICATION 14601.
- 14) TYP THE BUS OF EXISTING PANEL AS SHOWN.
- 15) PROVIDE A 200/300/1, HEAVY DUTY FUSED DISCONNECT. FUSE AT 150 AMP.
- 16) LOCATED ABOVE CEILING FOR FLOOR VALVES.
- 17) ELECTRIC CONTROLLED SUN FRACTS.
- 18) PROVIDE NEW SPEAKER TO MATCH EXISTING.



Jinright, Ryan, & Lynn
241 SOUTH MADISON STREET
THOMASVILLE, GEORGIA 31792

CAD FILE	
DRAWN BY	CTS
CHECKED BY	EDM
DATE	16 JANUARY 2001
REVISION	
REVISION	
REVISION	

**MODIFICATIONS TO THE DAY HOSPITAL
RIDGEVIEW INSTITUTE
3995 SOUTH COBB DRIVE
SMYRNA, GEORGIA**

SHEET

E2

TO ORDER PLANS GO TO



ANDREWS, HAMRICK & POWELL, INC.
250 Charter Lane,
Suite 100
Macon, Georgia 31210
Phone (478) 405-8210
Fax (478) 405-8210
WWW.AHP2000.COM

