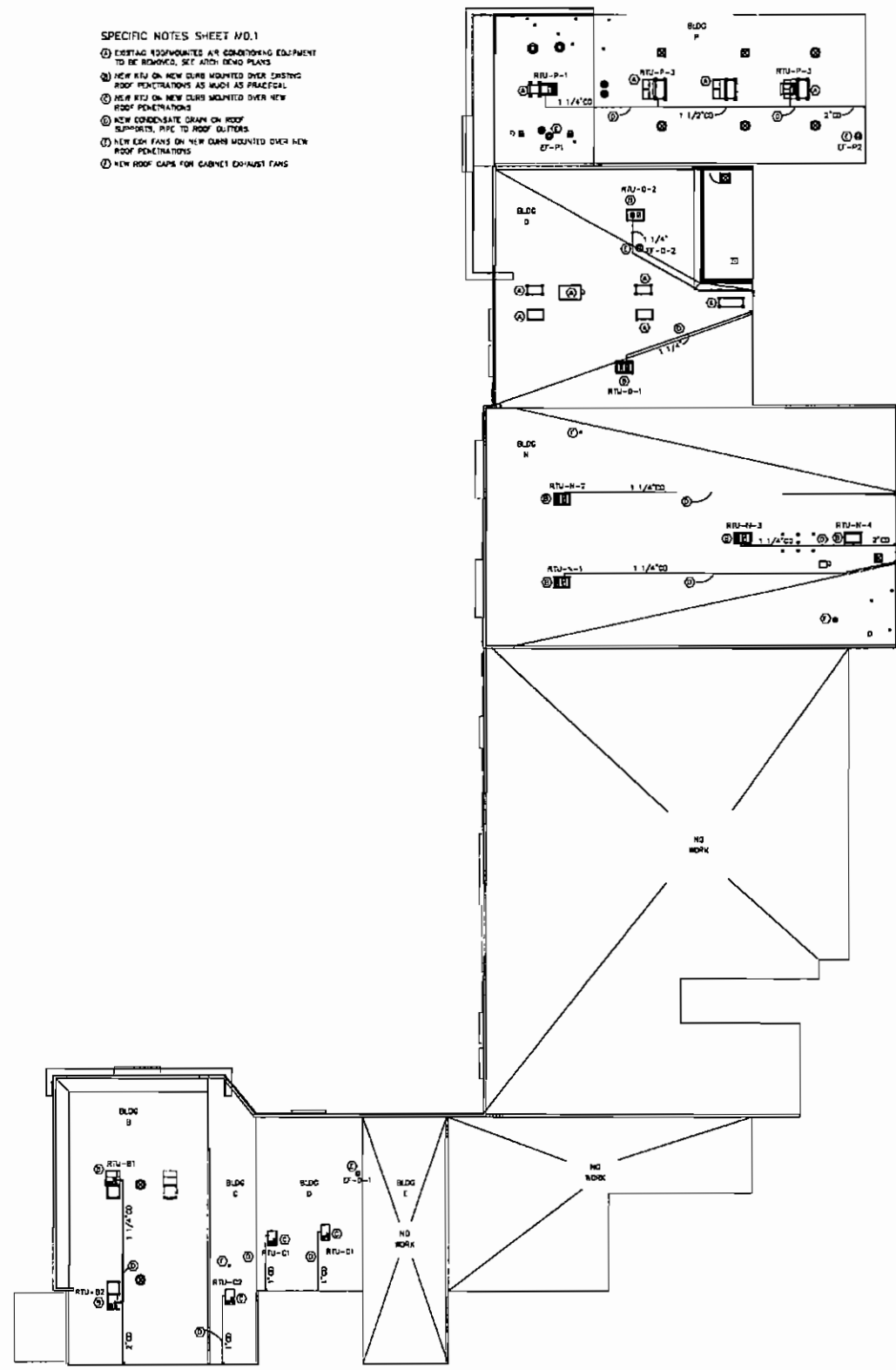


RENOVATIONS TO P.C. GOV. COMPLEX
 ALL SERVICE PLANS, SPECIFICATIONS, COMMENTS, FIELD DATA, NOTES AND OTHER DOCUMENTS AND INSTRUMENTS INCORPORATED BY THE DESIGN PROFESSIONAL SHALL BECOME THE PROPERTY OF THE DESIGN PROFESSIONAL. THE DESIGN PROFESSIONAL SHALL BE RESPONSIBLE FOR THE PROTECTION OF THIS DOCUMENT FROM ANY FALSIFICATION OR ALTERATION. THE DESIGN PROFESSIONAL SHALL BE RESPONSIBLE FOR THE PROTECTION OF THIS DOCUMENT FROM ANY FALSIFICATION OR ALTERATION. THE DESIGN PROFESSIONAL SHALL BE RESPONSIBLE FOR THE PROTECTION OF THIS DOCUMENT FROM ANY FALSIFICATION OR ALTERATION.



OVERALL MECH ROOF PLAN
 SCALE: 1"=30'
 NOTE: ALL DIMENSIONS ARE TO FACE OF STUD, EDGE OF SLAB, OR CENTERLINE OF DOOR OR WINDOW

SKINNER VIGNOLA McLEAN, INC.
 ARCHITECTS & PLANNERS
 1628 N. W. 6th Street
 Gainesville, Florida 32609
 Florida Certificate No. AA3478
 (352) 378-4400
 FAX (352) 377-5378

RENOVATIONS FOR THE
 PUTNAM COUNTY
 GOVERNMENTAL COMPLEX
 PALATKA, FL SVN #00505

McLean and Associates, Inc.
 P. O. BOX 1000
 PALATKA, FLORIDA 32909
 PHONE (352) 377-5378
 FAX (352) 377-5378
 IN NOV. 1987

DATE: 04/26/07
 DRAWN BY: C.A.S.
 CHECKED BY: R.E.C.
 REVISIONS:
 OVERALL MECH ROOF PLAN
 SHEET
MO.1
 of 00

RENOVATIONS TO P.C. GOV. COMPLEX

RENOVATIONS TO P.C. GOV. COMPLEX

RENOVATIONS TO P.C. GOV. COMPLEX

ASHRAE 62.1 STANDARD - OUTSIDE AIR REQUIREMENTS

AIR HANDLER NUMBER - V-P-1									
ROOM NAME	AREA (SQ. FT.)	SPACE REQUIREMENTS (CFM/SQ. FT.)	CFM	PEOPLE/ROOM	PEOPLE	CFM/PERSON	CFM	CFM	TOTAL O/A CFM
OFFICE P111	249	08	14	5/1000	1	5	5	19	19
WOMEN RR P113	180	-	-	-	-	-	-	0750	0750
MEAN RR P118	192	-	-	-	-	-	-	0750	0750
INCESS R104	268	08	22	5/1000	3	2	10	47	
CORRIDOR	132	08	8	-	-	-	-	8	
TOTAL	-	-	-	-	-	-	-	74	

AIR HANDLER NUMBER - V-P-2									
ROOM NAME	AREA (SQ. FT.)	SPACE REQUIREMENTS (CFM/SQ. FT.)	CFM	PEOPLE/ROOM	PEOPLE	CFM/PERSON	CFM	CFM	TOTAL O/A CFM
OFFICE P112	180	08	14	5/1000	1	5	5	14.6	
OFFICE P113	191	08	15.3	5/1000	1	5	5	18.3	
OFFICE P114	194	08	15.5	5/1000	1	5	5	18.8	
OFFICE P115	158	08	12.6	30/1000	1	3	3	15.3	
OFFICE P116	187	08	14.9	5/1000	1	5	5	18.2	
HALL P101	253	08	20.2	-	-	-	-	15.2	
TOTAL	-	-	-	-	-	-	-	82	

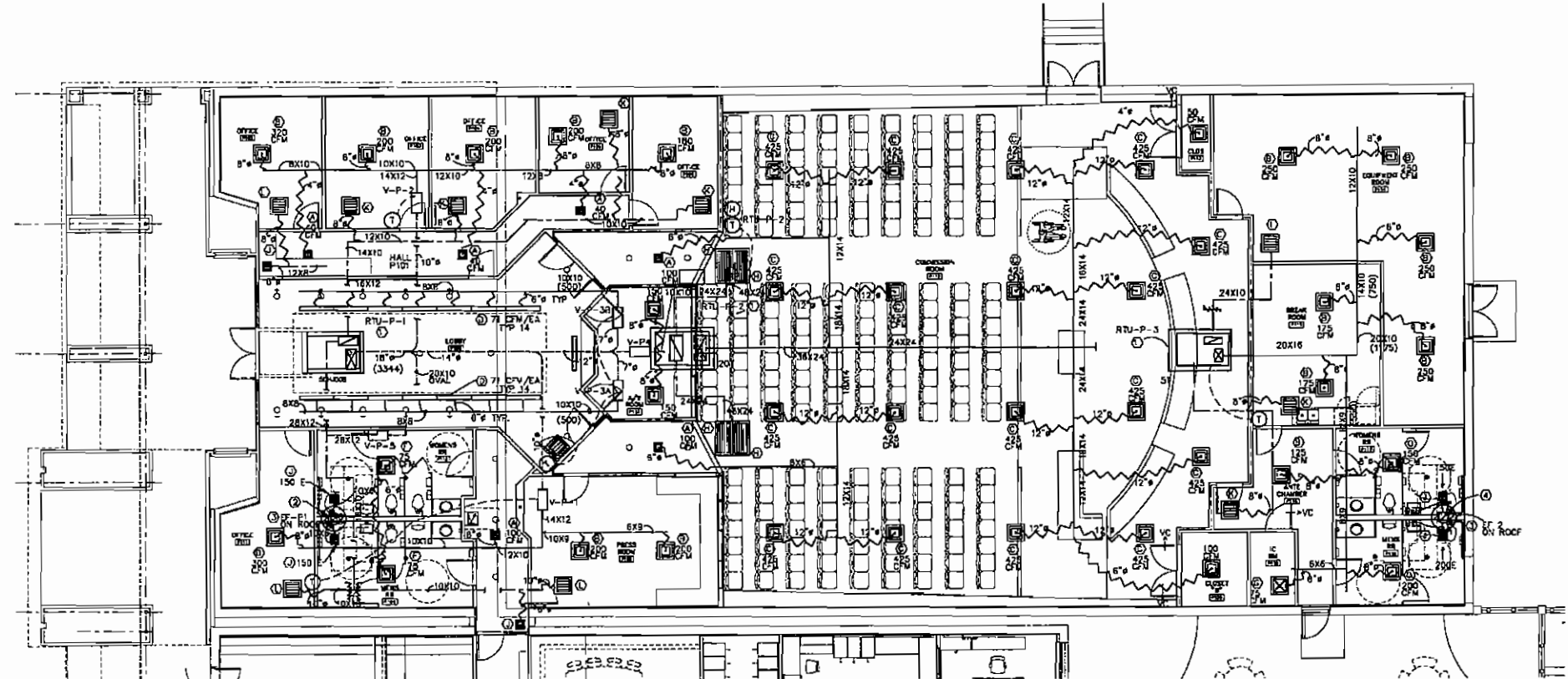
AIR HANDLER NUMBER - V-P-3A/B									
ROOM NAME	AREA (SQ. FT.)	SPACE REQUIREMENTS (CFM/SQ. FT.)	CFM	PEOPLE/ROOM	PEOPLE	CFM/PERSON	CFM	CFM	TOTAL O/A CFM
LOBBY P100	721	08	57.7	30/1000	75	5	100	144	
TOTAL	-	-	-	-	-	-	-	144	

AIR HANDLER NUMBER - V-P-4									
ROOM NAME	AREA (SQ. FT.)	SPACE REQUIREMENTS (CFM/SQ. FT.)	CFM	PEOPLE/ROOM	PEOPLE	CFM/PERSON	CFM	CFM	TOTAL O/A CFM
A/V P107	132	08	10.6	-	-	-	-	32	
TOTAL	-	-	-	-	-	-	-	32	

AIR HANDLER NUMBER - RTU-P-2									
ROOM NAME	AREA (SQ. FT.)	SPACE REQUIREMENTS (CFM/SQ. FT.)	CFM	PEOPLE/ROOM	PEOPLE	CFM/PERSON	CFM	CFM	TOTAL O/A CFM
CORRIDOR	53	08	4.2	-	-	-	-	6	
CORRIDOR-4	93	08	7.4	-	-	-	-	8	
CONFERENCE P112	3478	08	278.2	-	218	5	1080	1288	
CLOSET P113	40	08	3.2	-	-	-	-	3.4	
CLOSET P116	72	08	5.8	-	-	-	-	6.2	
TOTAL	-	-	-	-	-	-	-	1317	

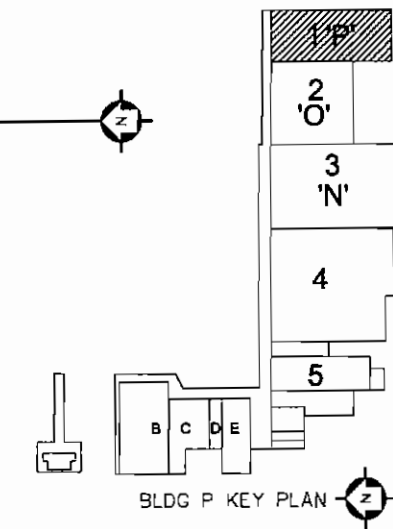
AIR HANDLER NUMBER - RTU-P-3									
ROOM NAME	AREA (SQ. FT.)	SPACE REQUIREMENTS (CFM/SQ. FT.)	CFM	PEOPLE/ROOM	PEOPLE	CFM/PERSON	CFM	CFM	TOTAL O/A CFM
EQUIPMENT P114	838	20	167.6	-	-	-	-	30	
BREAK P115	320	20	64	30/1000	10	5	30	30	
OFFICE CHAIRMAN P118	113	20	22.6	-	-	-	-	7	
WOMEN RR P113	178	08	14.2	-	-	-	-	0800	
MEAN RR P118	178	08	14.2	-	-	-	-	0800	
IC ROOM P118	34	08	2.7	-	-	-	-	3	
TOTAL	-	-	-	-	-	-	-	110	

- SPECIFIC NOTES M.1.1**
- ① NEW ROOF TOP UNIT, PROVIDE WITH NEW CURB INSTALLED OVER EXISTING ROOF CURB. INCREASE CURBING SIZE IF REQUIRED.
 - ② 11"X11" EXHAUST DUCT UP TO EF-P-1
 - ③ EXHAUST FAN ON ROOF CURB
 - ④ 11"X11" EXHAUST UP TO EF-P-2



BLDG P HVAC PLAN

SCALE: 1/8"=1'-0"
NOTE: ALL DIMENSIONS ARE TO FACE OF STUD, EDGE OF SLAB, OR CENTERLINE OF DOOR OR WINDOW



SKINNER VIGNOLA McLEAN, INC.
ARCHITECTS & PLANNERS
1628 N. W. 6th Street
Gainesville, Florida 32609
Florida Certificate No. AA3478
(352) 378-4400
FAX (352) 377-5378



RENOVATIONS FOR THE
PUTNAM COUNTY
GOVERNMENTAL COMPLEX
PALATKA, FL
SYM #00505

With good Associates, Inc.
P.L.L.C.
1000 W. 1st St., Suite 100
Gainesville, FL 32609
PHONE (352) 378-4400
FAX (352) 377-5378

DATE: 04/26/07

DRAWN BY: C.A.S.

CHECKED BY: R.E.C.

REVISIONS:

- Δ
- Δ
- Δ
- Δ
- Δ

BLDG P
HVAC PLAN

SHEET

M1.1
OF 00

RENOVATIONS TO P.C. GOV. COMPLEX

RENOVATIONS TO P.C. GOV. COMPLEX

RENOVATIONS TO P.C. GOV. COMPLEX

ASHRAE 62.1 STANDARD - OUTSIDE AIR REQUIREMENTS

AIR HANDLER NUMBER - V-0-1						
ROOM NAME	AREA (SQ. FT.)	SPACE REQUIREMENTS (CFM/SQFT)	CFM	OCCUPANCY REQUIREMENTS (PEOPLE/SQFT)	PEOPLE	TOTAL O/A CFM
CONF 0100	284	08	16			
OFFICE 0104	183	08	15	5/1000	1	17
OFFICE 0103	143	08	12	5/1000	1	17
OFFICE 0102	183	08	15	5/1000	1	17
OFFICE 0101	182	08	15	5/1000	1	17
TOTAL						

AIR HANDLER NUMBER - V-0-2						
ROOM NAME	AREA (SQ. FT.)	SPACE REQUIREMENTS (CFM/SQFT)	CFM	OCCUPANCY REQUIREMENTS (PEOPLE/SQFT)	PEOPLE	TOTAL O/A CFM
COPY 0105	122	12	18			
FILE 0107	128	12	18			
OFFICE 0108	187	08	15	5/1000	1	17
OFFICE 0109	243	08	16	5/1000	1	17
OFFICE 0109	243	08	16	5/1000	1	16
BOOK HALL 0136	270	12	32			
WEST HALL 0137	173	12	21			
TOTAL						

AIR HANDLER NUMBER - V-0-3						
ROOM NAME	AREA (SQ. FT.)	SPACE REQUIREMENTS (CFM/SQFT)	CFM	OCCUPANCY REQUIREMENTS (PEOPLE/SQFT)	PEOPLE	TOTAL O/A CFM
LOBBY 0118	438	08	25			
LOBBY 0119	42	08	2			
RE 0121	12	08	1			
0123	271	08	17	5/1000	2	10
TOTAL						

AIR HANDLER NUMBER - V-0-4						
ROOM NAME	AREA (SQ. FT.)	SPACE REQUIREMENTS (CFM/SQFT)	CFM	OCCUPANCY REQUIREMENTS (PEOPLE/SQFT)	PEOPLE	TOTAL O/A CFM
OFFICE 0106	181	08	16	5/1000	1	17
OFFICE 0110	178	08	16	5/1000	1	17
OFFICE 0111	178	08	16	5/1000	1	17
OFFICE 0112	184	08	16	5/1000	1	17
FILES 0130	189	12	23			
OFFICE 0116	187	08	16	5/1000	1	17
OFFICE 0140	186	08	16	5/1000	1	17
CONF 8	253	08	15			
TOTAL						

AIR HANDLER NUMBER - V-0-5						
ROOM NAME	AREA (SQ. FT.)	SPACE REQUIREMENTS (CFM/SQFT)	CFM	OCCUPANCY REQUIREMENTS (PEOPLE/SQFT)	PEOPLE	TOTAL O/A CFM
OFFICE 0101	183	08	15	5/1000	1	17
OFFICE 0102	183	08	15	5/1000	1	17
WEST HALL 0136	182	08	15			
TOTAL						

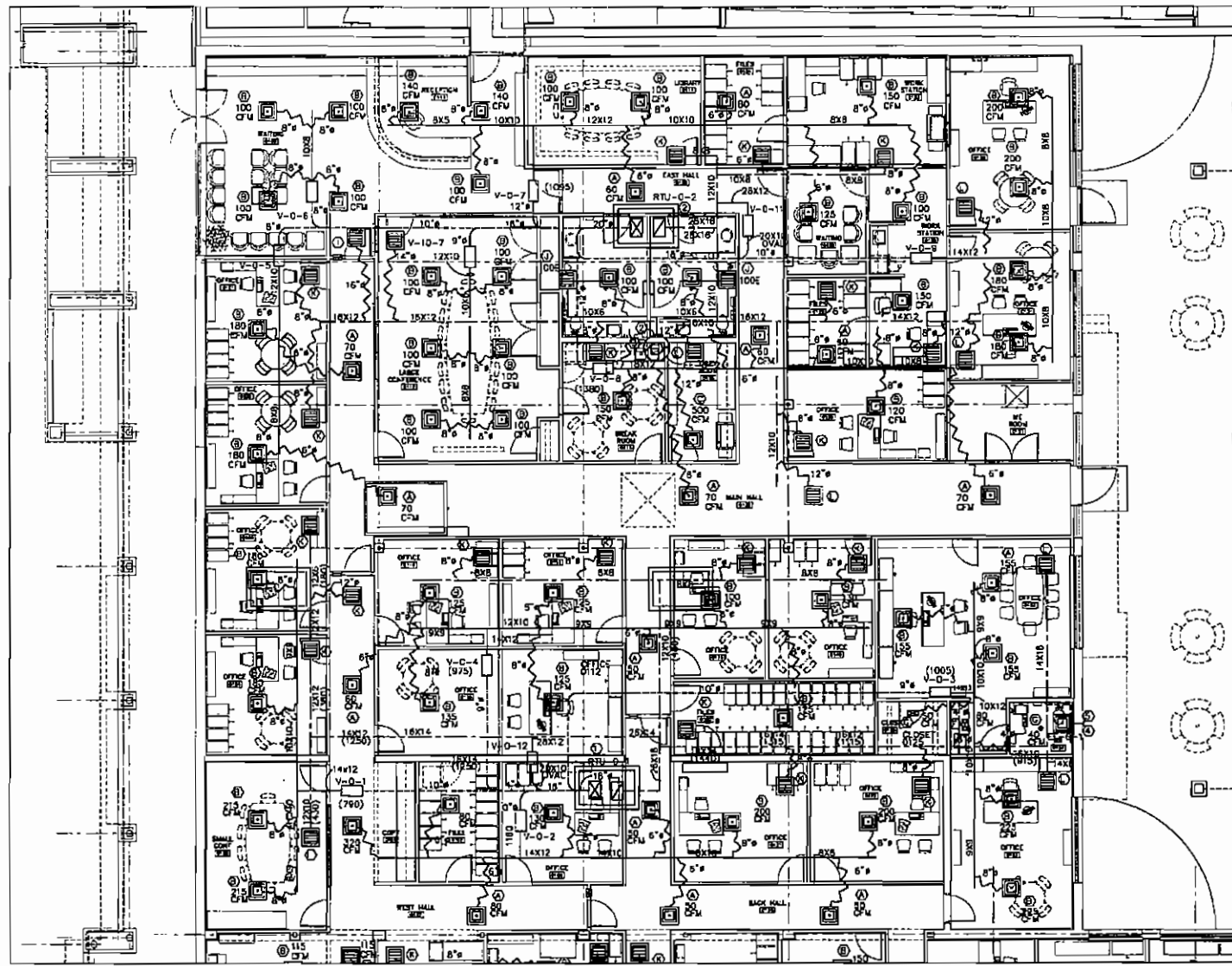
AIR HANDLER NUMBER - V-0-6						
ROOM NAME	AREA (SQ. FT.)	SPACE REQUIREMENTS (CFM/SQFT)	CFM	OCCUPANCY REQUIREMENTS (PEOPLE/SQFT)	PEOPLE	TOTAL O/A CFM
WAITING 0100	713	08	18	30/1000	18	50
TOTAL						

AIR HANDLER NUMBER - V-0-7						
ROOM NAME	AREA (SQ. FT.)	SPACE REQUIREMENTS (CFM/SQFT)	CFM	OCCUPANCY REQUIREMENTS (PEOPLE/SQFT)	PEOPLE	TOTAL O/A CFM
RECEPTION 0113	428	08	26	5/1000	1	17
LOBBY 0114	338	08	14	5/1000	1	17
FILES 0134	108	08	7			
EAST HALL 0135	336	08	20			
WORK ST. 0135	210	08	13	5/1000	1	17
WAITING 0133	111	08	8	30/1000	4	20
TOTAL						

AIR HANDLER NUMBER - V-0-8						
ROOM NAME	AREA (SQ. FT.)	SPACE REQUIREMENTS (CFM/SQFT)	CFM	OCCUPANCY REQUIREMENTS (PEOPLE/SQFT)	PEOPLE	TOTAL O/A CFM
MEGA 0119	128	08	18	30/1000	5	20
COPY 0108	102	08	6			
FILES 0128	87	08	5			
WORK ST 0130	195	08	12	5/1000	1	17
OFFICE 0122	186	08	11	5/1000	1	17
RE 0115	132	08				
RE 0117	132	08				
TOTAL						

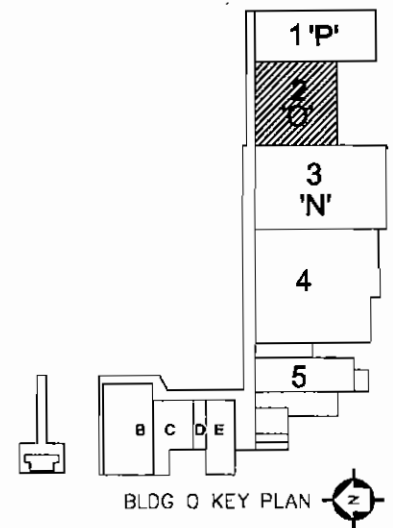
AIR HANDLER NUMBER - V-0-9						
ROOM NAME	AREA (SQ. FT.)	SPACE REQUIREMENTS (CFM/SQFT)	CFM	OCCUPANCY REQUIREMENTS (PEOPLE/SQFT)	PEOPLE	TOTAL O/A CFM
OFFICE 0133	233	08	18	5/1000	1	17
OFFICE 0131	233	08	14	5/1000	1	17
TOTAL						

AIR HANDLER NUMBER - V-0-10						
ROOM NAME	AREA (SQ. FT.)	SPACE REQUIREMENTS (CFM/SQFT)	CFM	OCCUPANCY REQUIREMENTS (PEOPLE/SQFT)	PEOPLE	TOTAL O/A CFM
LG COPY 0112	825	08	38	30/1000	18	80
TOTAL						



BLDG 0 HVAC PLAN

SCALE: 1/8"=1'-0"
NOTE: ALL DIMENSIONS ARE TO FACE OF STUD, EDGE OF SLAB, OR CENTERLINE OF DOOR OR WINDOW



SKINNER VIGNOLA McLEAN, INC.
ARCHITECTS & PLANNERS
1628 N. W. 6th Street
Gainesville, Florida 32609
Florida Certificate No. AA3478
(352) 378-4400
FAX (352) 377-5378

RENOVATIONS FOR THE
PUTNAM COUNTY
GOVERNMENTAL COMPLEX
PALATKA, FL SVN #00505

Skinner and Associates, Inc.
P.L.L.C. ARCHITECTS & PLANNERS
1628 N.W. 6th Street
Gainesville, Florida 32609
FLORIDA CERTIFICATE NO. AA3478
EXPIRES 12/31/2010

DATE: 04/26/07
DRAWN BY: C.A.S.
CHECKED BY: R.E.C.
REVISIONS:
BUILDING 0
HVAC PLAN
SHEET
M2.1
OF 00

RENOVATIONS TO P.C. GOV. COMPLEX

RENOVATIONS TO P.C. GOV. COMPLEX

RENOVATIONS TO P.C. GOV. COMPLEX

ASHRAE 62.1 STANDARD - OUTSIDE AIR REQUIREMENTS

AIR HANDLER NUMBER - V-N-1							
ROOM NAME	AREA (SQ. FT.)	SPACE REQUIREMENTS (CFM/1000)	CFM	OCCUPANCY REQUIREMENTS (PEOPLE/1000)	PEOPLE	CFM/PERSON	TOTAL O/A CFM
WAITING 1 N120	1000	0.08	80	30/1000	30	5	150
LP WAIT N120A	230	0.08	18	5	1	5	18
OFFICE N122	103	0.08	8	5	1	5	11
TOTAL							232

AIR HANDLER NUMBER - V-N-2							
ROOM NAME	AREA (SQ. FT.)	SPACE REQUIREMENTS (CFM/1000)	CFM	OCCUPANCY REQUIREMENTS (PEOPLE/1000)	PEOPLE	CFM/PERSON	TOTAL O/A CFM
LOBBY N1008	183	0.06	11	30/1000	4	3	42
OFFICE N130	200	0.08	16	5/1000	1	5	21
RE-2-1 N126	48	-	-	-	-	-	COND.
RE-2-2 N142	48	-	-	-	-	-	COND.
OFFICE N131	224	0.08	18	5/1000	2	10	28
CORR 3 N141	422	0.08	34	-	-	-	30
LOBBY 2 N143A	154	0.08	12	30/1000	3	3	25
OFFICE N132	118	0.08	9	5/1000	1	5	14
OFFICE N134	82	0.08	6	5/1000	1	5	11
RE-1-1 N136	42	-	-	-	-	-	COND.
RE-1-2 N137	42	-	-	-	-	-	COND.
Z1 N133	130	0.08	10	5/1000	1	5	15
OFFICE N130	205	0.08	16	5/1000	1	5	21
WEST HALL N142	224	0.08	18	-	-	-	31
TOTAL							235

AIR HANDLER NUMBER - V-N-3							
ROOM NAME	AREA (SQ. FT.)	SPACE REQUIREMENTS (CFM/1000)	CFM	OCCUPANCY REQUIREMENTS (PEOPLE/1000)	PEOPLE	CFM/PERSON	TOTAL O/A CFM
OFFICE N128	208	0.08	16	30/1000	10	5	50
OFFICE N125	-	-	-	-	-	-	-
OFFICE N127	-	-	-	-	-	-	-
CONFERENCE	-	-	-	-	-	-	-
TOTAL							62

AIR HANDLER NUMBER - V-N-4							
ROOM NAME	AREA (SQ. FT.)	SPACE REQUIREMENTS (CFM/1000)	CFM	OCCUPANCY REQUIREMENTS (PEOPLE/1000)	PEOPLE	CFM/PERSON	TOTAL O/A CFM
CONF N129	237	0.08	19	30/1000	10	5	50
TOTAL							64

AIR HANDLER NUMBER - V-N-5							
ROOM NAME	AREA (SQ. FT.)	SPACE REQUIREMENTS (CFM/1000)	CFM	OCCUPANCY REQUIREMENTS (PEOPLE/1000)	PEOPLE	CFM/PERSON	TOTAL O/A CFM
CONF N129	237	0.12	28	30/1000	10	5	50
OFFICE N126	87	0.08	7	5/1000	1	5	12
OFFICE N127	95	0.08	8	5/1000	1	5	13
FILES 1 N124	358	0.12	43	-	-	-	43
WORK STA N124	248	0.08	20	5/1000	5	5	30
OFFICE N129	236	0.08	19	5/1000	2	5	25
OFFICE N123	184	0.08	15	5/1000	1	5	20
OPEN OFFICE N122	787	0.08	63	5/1000	8	5	48
TOTAL							208

AIR HANDLER NUMBER - V-N-6							
ROOM NAME	AREA (SQ. FT.)	SPACE REQUIREMENTS (CFM/1000)	CFM	OCCUPANCY REQUIREMENTS (PEOPLE/1000)	PEOPLE	CFM/PERSON	TOTAL O/A CFM
LARGE BREAK N120	488	0.08	39	30/1000	25	5	125
MEETING N110	487	0.13	63	-	-	-	63
FILES N121	275	0.12	33	-	-	-	33
TOTAL							221

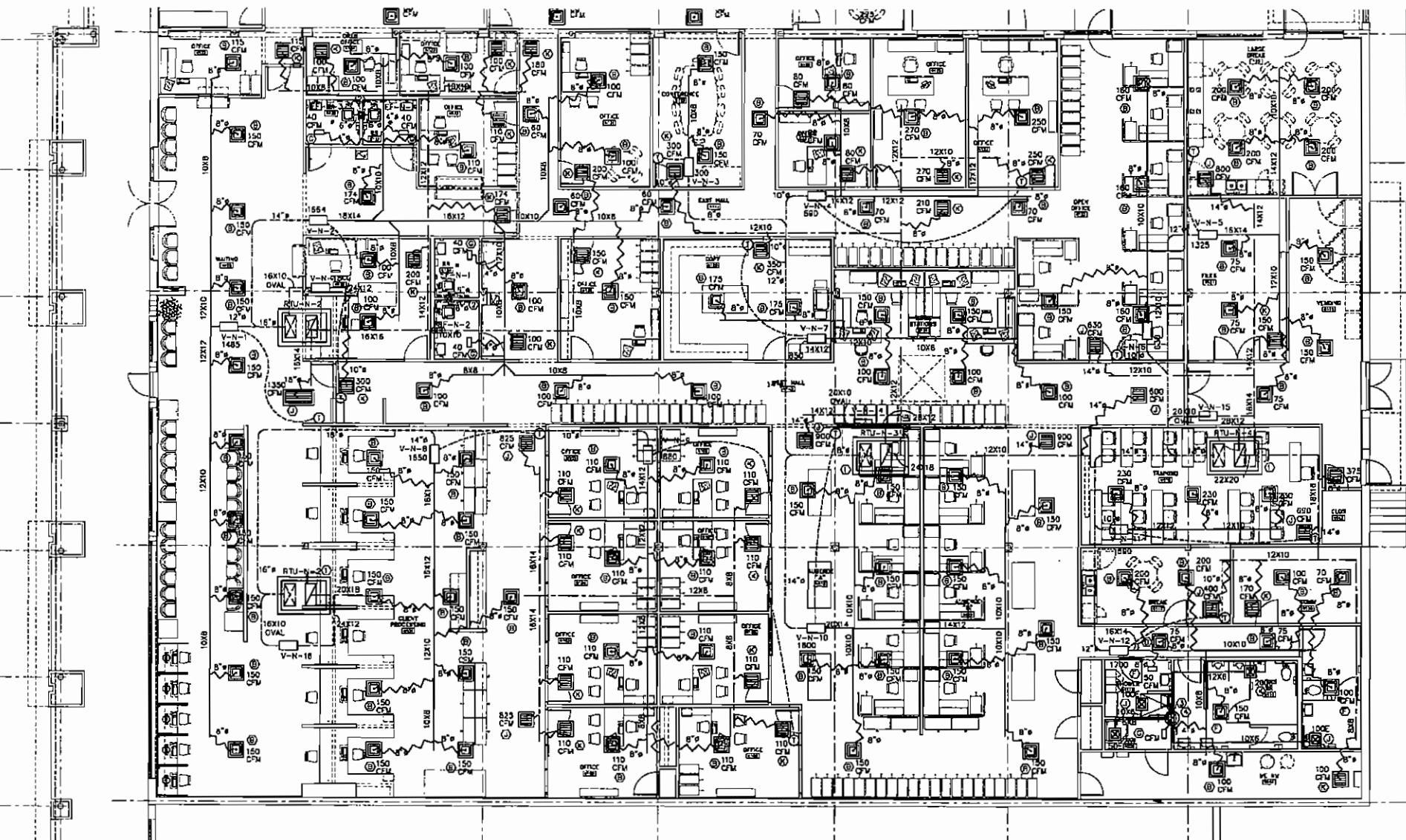
AIR HANDLER NUMBER - V-N-7							
ROOM NAME	AREA (SQ. FT.)	SPACE REQUIREMENTS (CFM/1000)	CFM	OCCUPANCY REQUIREMENTS (PEOPLE/1000)	PEOPLE	CFM/PERSON	TOTAL O/A CFM
CLIENT PROCESS N116A	1383	0.08	110	5/1000	10	5	50
CLIENT PROCESS N116B	172	0.08	14	5/1000	2	5	19
TOTAL							178

AIR HANDLER NUMBER - V-N-8							
ROOM NAME	AREA (SQ. FT.)	SPACE REQUIREMENTS (CFM/1000)	CFM	OCCUPANCY REQUIREMENTS (PEOPLE/1000)	PEOPLE	CFM/PERSON	TOTAL O/A CFM
OFFICE N133	24	0.08	2	5/1000	1	5	7
OFFICE N131	172	0.08	14	5/1000	1	5	19
OFFICE N104	172	0.08	14	5/1000	1	5	19
OFFICE N108	174	0.08	14	5/1000	1	5	19
OFFICE N106	172	0.08	14	5/1000	1	5	19
OFFICE N107	172	0.08	14	5/1000	1	5	19
OFFICE N108	172	0.08	14	5/1000	1	5	19
OFFICE N109	192	0.08	15	5/1000	1	5	21
TOTAL							124

AIR HANDLER NUMBER - V-N-9							
ROOM NAME	AREA (SQ. FT.)	SPACE REQUIREMENTS (CFM/1000)	CFM	OCCUPANCY REQUIREMENTS (PEOPLE/1000)	PEOPLE	CFM/PERSON	TOTAL O/A CFM
AUDIENCE HALL N110	2000	0.08	160	5/1000	10	5	100
TOTAL							170

AIR HANDLER NUMBER - V-N-10							
ROOM NAME	AREA (SQ. FT.)	SPACE REQUIREMENTS (CFM/1000)	CFM	OCCUPANCY REQUIREMENTS (PEOPLE/1000)	PEOPLE	CFM/PERSON	TOTAL O/A CFM
BREAK N117	125	0.08	10	30/1000	10	5	50
CONF N118	130	0.08	10	-	-	-	8
CONF N118A	134	0.08	10	-	-	-	7
USE 3 N114	190	-	-	-	-	-	COND.
MPR 1 N110	124	-	-	-	-	-	COND.
WC N114	232	0.08	18	-	-	-	14
JAN 1 N112	25	-	-	-	-	-	COND.
TOTAL							83

AIR HANDLER NUMBER - V-N-11							
ROOM NAME	AREA (SQ. FT.)	SPACE REQUIREMENTS (CFM/1000)	CFM	OCCUPANCY REQUIREMENTS (PEOPLE/1000)	PEOPLE	CFM/PERSON	TOTAL O/A CFM
TRAINING N118	175	0.08	14	30/1000	30	7.5	222
TOTAL							281



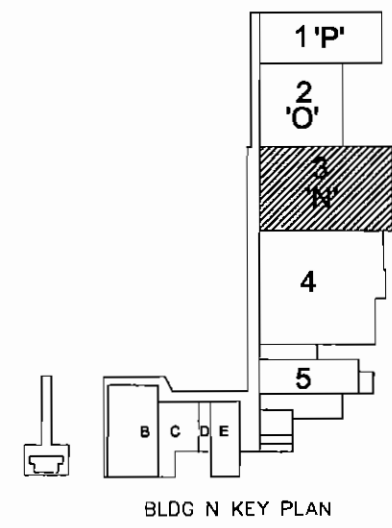
BLDG N HVAC PLAN

SCALE: 1/8"=1'-0"
NOTE: ALL DIMENSIONS ARE TO FACE OF STUD, EDGE OF SLAB, OR CENTERLINE OF DOOR OR WINDOW



SPECIFIC NOTES M3.1

- NEW ROOF TOP UNIT, PROVIDE WITH NEW CURB INSTALLED OVER EXISTING ROOF OPENING. INCREASE OPENING SIZE IF REQUIRED.
- 8"Ø UP TO BREIDERT MODEL 611 CM ROOF CAP ON CURB.
- EF-N-5 ON ROOF WITH NEW CURB.
- 11"X11" EXHAUST DUCT UP TO EF-N-5



BLDG N KEY PLAN

SKINNER VIGNOLA McLEAN, INC.
ARCHITECTS & PLANNERS
1628 N. W. 6th Street
Gainesville, Florida 32609
Florida Certificate No. AA3178



RENOVATIONS FOR THE
PUTNAM COUNTY
GOVERNMENTAL COMPLEX
PALATKA, FL

Johnson and Associates, Inc.
P.O. BOX 677
10000 W. US HWY 90
GAINESVILLE, FL 32609
ARCHITECTS & PLANNERS
FL. REG. NO. 10000

DATE: 04/26/07
DRAWN BY: C.A.S.
CHECKED BY: R.E.C.
REVISIONS:
△
△
△
△
△

BUILDING N
HVAC PLAN
SHEET
M3.1
OF 00

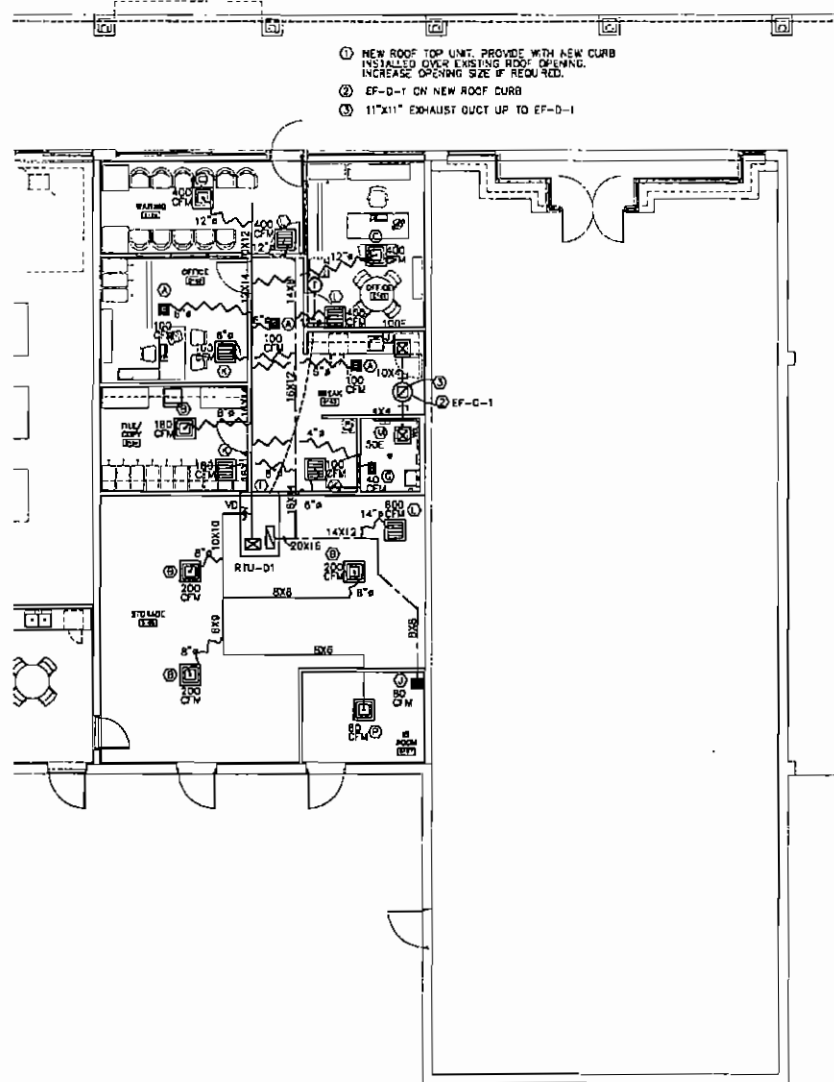
RENOVATIONS TO P.C. GOV. COMPLEX

RENOVATIONS TO P.C. GOV. COMPLEX

RENOVATIONS TO P.C. GOV. COMPLEX

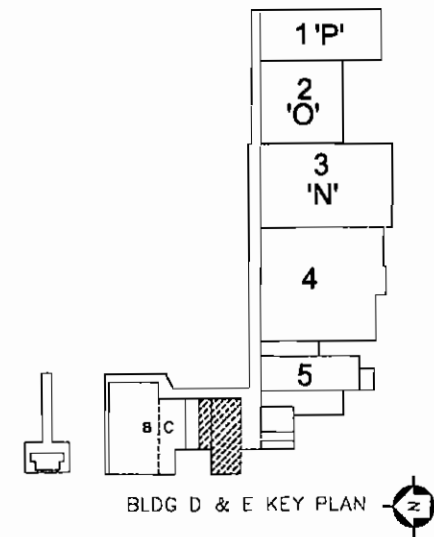
ALL RIGHTS, TITLE, INTERESTS, CLAIMS, AND DEMANDS ARE HEREBY RESERVED BY THE DESIGN PROFESSIONAL. THE DESIGN PROFESSIONAL SHALL BE RESPONSIBLE FOR THE DESIGN PROFESSIONAL'S DESIGN. THE DESIGN PROFESSIONAL SHALL BE RESPONSIBLE FOR THE DESIGN PROFESSIONAL'S DESIGN. THE DESIGN PROFESSIONAL SHALL BE RESPONSIBLE FOR THE DESIGN PROFESSIONAL'S DESIGN.

AIR HANDLER NUMBER - RTU-D1		SPACE REQUIREMENTS		OCCUPANCY REQUIREMENTS			TOTAL O/A CFM
ROOM NAME	AREA (SQ. FT.)	CFM/SQ. FT.	CFM	PEOPLE/SQ. FT.	PEOPLE / CFM/PERSON	CFM	
BREAK RM D103	233	.06	15	50/1000	8	5	40
COPY D104	147	.06	9	5/1000	1	5	5
HS RM D107	104	.06	6	5/1000	1	5	5
OFFICE D101	184	.06	11	5/1000	1	5	5
OFFICE 102	172	.06	10	5/1000	1	5	5
STORAGE D106	704	.12	84				84
WAITING D100	178	.06	11	50/1000	5	5	25
							36
							231



BLDGS D & E HVAC PLAN

SCALE: 1/8"=1'-0"
NOTE: ALL DIMENSIONS ARE TO FACE OF STUD, EDGE OF SLAB, OR CENTERLINE OF DOOR OR WINDOW



SKINNER VIGNOLA McLEAN, INC.
ARCHITECTS & PLANNERS
1628 N. W. 6th Street
Gainesville, Florida 32609
Florida Certificate No. AA3478
(352) 378-4400
FAX (352) 377-5378

RENOVATIONS FOR THE
PUTNAM COUNTY
GOVERNMENTAL COMPLEX
PALATKA, FL
SWM #00505

Professional Seal
P. C. GOV. COMPLEX
RENOVATIONS
ARCHITECTS & PLANNERS
SKINNER VIGNOLA McLEAN, INC.
PALATKA, FL 32909
FLORIDA LICENSE NO. AA3478
EXPIRES 12/31/07

DATE: 04/26/07
DRAWN BY: C.A.S.
CHECKED BY: R.E.C.
REVISIONS:
BUILDINGS D&E
HVAC PLAN

SHEET
M6.1
00

RENOVATIONS TO P.C. GOV. COMPLEX

RENOVATIONS TO P.C. GOV. COMPLEX

ASHRAE 62.1 STANDARD - OUTSIDE AIR REQUIREMENTS

AIR HANDLER NUMBER - V-B-1							
ROOM NAME	AREA (SQ. FT.)	SPACE REQUIREMENTS		OCCUPANCY REQUIREMENTS			TOTAL Q/A CFM
		CFM/SQFT	CFM	PEOPLE/SQFT	PEOPLE	CFM/PERSON	CFM
HR 8103	47	-	-	-	-	-	<500>
WAITING B102	812	.06	37	30/1000	18	3	90
COPY B103	134	.06	8	5/1000	1	3	3
CONF B104	311	.06	19	30/1000	10	3	30
TOTAL							127

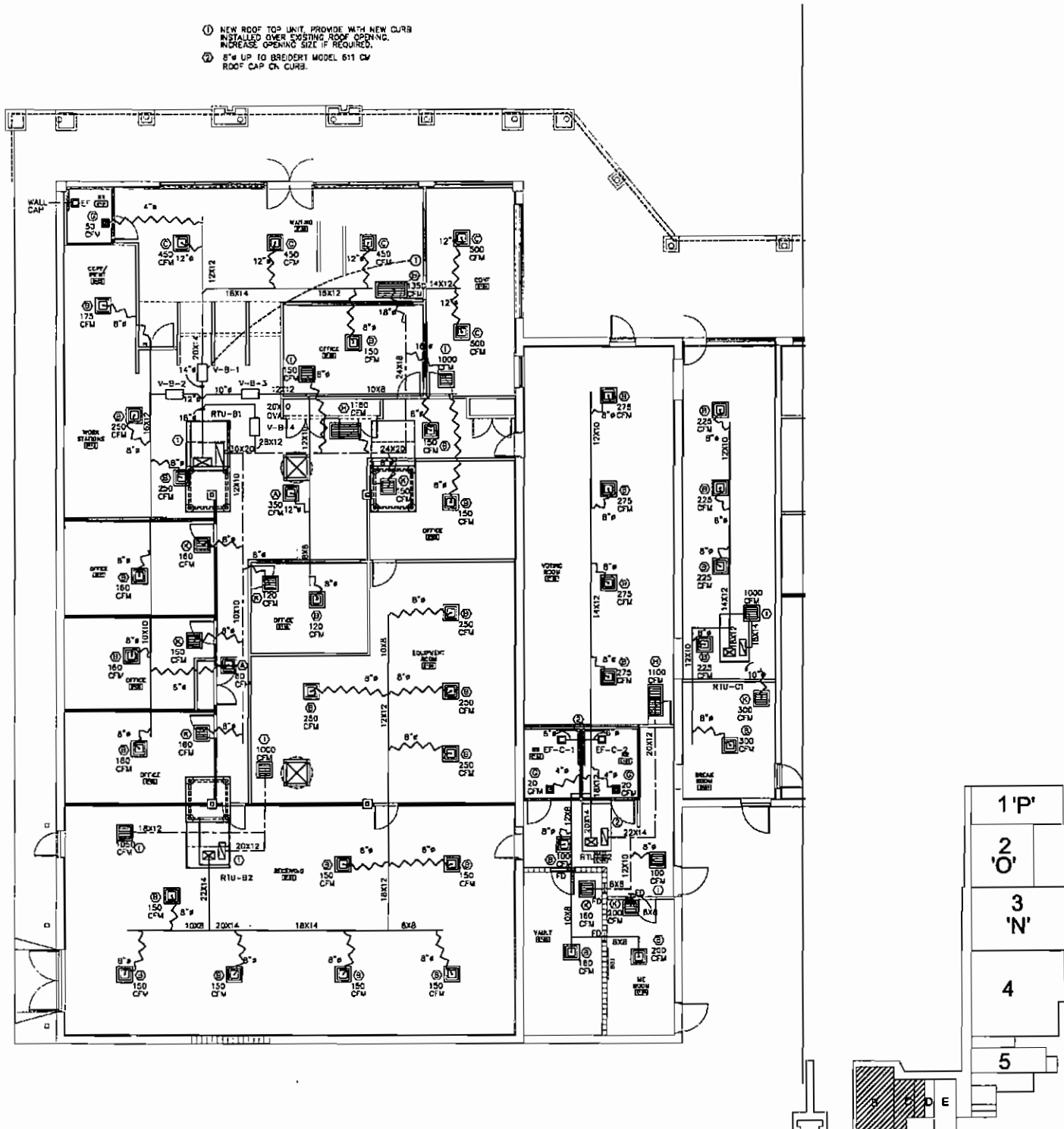
AIR HANDLER NUMBER - V-B-2							
ROOM NAME	AREA (SQ. FT.)	SPACE REQUIREMENTS		OCCUPANCY REQUIREMENTS			TOTAL Q/A CFM
		CFM/SQFT	CFM	PEOPLE/SQFT	PEOPLE	CFM/PERSON	CFM
OFFICE B112	154	.06	9	5/1000	3	3	15
OFFICE B111	231	.06	13	5/1000	1	3	3
OFFICE B109	207	.06	13	5/1000	1	3	3
OFFICE B108	224	.06	13	5/1000	1	3	3
CORRIDOR	137	.06	8	-	-	-	6
TOTAL							37

AIR HANDLER NUMBER - V-B-3							
ROOM NAME	AREA (SQ. FT.)	SPACE REQUIREMENTS		OCCUPANCY REQUIREMENTS			TOTAL Q/A CFM
		CFM/SQFT	CFM	PEOPLE/SQFT	PEOPLE	CFM/PERSON	CFM
OFFICE B103	314	.04	13	5/1000	1	3	3
OFFICE B105	338	.04	14	5/1000	1	3	3
OFFICE B110	173	.06	10	5/1000	1	3	3
OFFICE B108	390	.04	17	5/1000	2	3	15
TOTAL							27

AIR HANDLER NUMBER - RTU-B-1							
ROOM NAME	AREA (SQ. FT.)	SPACE REQUIREMENTS		OCCUPANCY REQUIREMENTS			TOTAL Q/A CFM
		CFM/SQFT	CFM	PEOPLE/SQFT	PEOPLE	CFM/PERSON	CFM
EQUIPMENT RM B106	808	.12	103	-	-	-	103
RECEIVING B107	1882	.12	202	-	-	-	202
TOTAL							305

AIR HANDLER NUMBER - RTU-B-2							
ROOM NAME	AREA (SQ. FT.)	SPACE REQUIREMENTS		OCCUPANCY REQUIREMENTS			TOTAL Q/A CFM
		CFM/SQFT	CFM	PEOPLE/SQFT	PEOPLE	CFM/PERSON	CFM
VOTING B C100B	322	.06	31	30/1000	18	3	90
MEETING ROOM C101	177	.06	11	30/1000	4	3	30
TOTAL							120

AIR HANDLER NUMBER - RTU-C-1							
ROOM NAME	AREA (SQ. FT.)	SPACE REQUIREMENTS		OCCUPANCY REQUIREMENTS			TOTAL Q/A CFM
		CFM/SQFT	CFM	PEOPLE/SQFT	PEOPLE	CFM/PERSON	CFM
VOTING & STAGE	848	.36	31	-	41	3	235
HR C103	81	-	-	-	-	-	<500>
HR C102	51	-	-	-	-	-	<500>
HALL C104	237	.04	12	-	-	-	12
HALL C105	206	.04	12	-	-	-	12
ME C108	153	.06	10	-	-	-	10
TOTAL							326

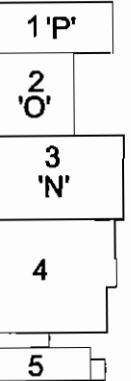


- 1 NEW ROOF TOP UNIT, PROVIDE WITH NEW CURB INSTALLED OVER EXISTING ROOF OPENING. INCREASE OPENING SIZE IF REQUIRED.
- 2 8" UP TO BREEDERY MODEL 611 CM ROOF CAP ON CURB.

BLDG B&C HVAC PLAN

SCALE: 1/8"=1'-0"
 NOTE: ALL DIMENSIONS ARE TO FACE OF STUD, EDGE OF SLAB, OR CENTERLINE OF DOOR OR WINDOW

BLDG B & C KEY PLAN



SKINNER VIGNOLA McLEAN, INC.
 ARCHITECTS & PLANNERS
 1628 N. W. 6th Street
 Gainesville, Florida 32609
 Florida Certificate No. AA3478
 (352) 378-4400
 FAX (352) 377-5378



RENOVATIONS FOR THE
 PUTNAM COUNTY
 GOVERNMENTAL COMPLEX
 PALATKA, FL SVL #00505

Skinner and Associates, P.C.
 I, the undersigned, being a duly licensed Professional Engineer in the State of Florida, hereby certify that I am the author of the design and drawings herein and that I am a duly licensed Professional Engineer in the State of Florida.
 DATE: 04/26/07
 DRAWN BY: C.A.S.
 CHECKED BY: R.E.C.
 REVISIONS:
 BUILDING B LIGHTING PLAN
 SHEET
 M7.1
 OF 00

RENOVATIONS TO P.C. GOV. COMPLEX

PACKAGED UNIT SCHEDULE - ELECTRIC COOLING/ELECTRIC HEAT PUMP W/ AUX STRIP 208/3Ø																																		
MARK	SYSTEM TYPE	MFR	MODEL	L/W/H	NO. TON	COOLING CAPACITY				RATING CONDITIONS				HEATING CAP @47/70				AIR FLOW				INDOOR FAN				AUXILIARY HEATER				ELECTRICAL				COMMENTS
						TOTAL	SENS	SEER/EER	PLF	AMB	EAT-DH/MD	BTUH	HSP/ COP	CONFG	AIR FLOW	CFM	EXT.	DRIVE	RPM*	HZ	VOLTS/Ø/FLA	KW	STAGE	VOLTS	PH	HTR AMP	AMPS	AMPS	WCA	BRKR	V/PH			
RTU-B-1	PACKAGE HEAT PUMP	CARRIER	50HJ0010	75/57/36/1000	10	119,400	89,800	/10.3	10.4	95	80/87	114/64	-/3.3/2.2	PACKAGE	DOWN	4000	1.0	B	950	5	208/3/11.7	-	2	208	3	-	(2)19.3	1.4	56.8	60	208/3			
RTU-B-2	PACKAGE HEAT PUMP	CARRIER	50HJ0008	73/44/42/830	5	63,800	45,600	13.0/	-	95	80/87	55,000	7.7/-	PACKAGE	DOWN	2000	1.0	B	1200	3	208/3/8.0	-	2	208	3	-	17.3	1.5	28.9	30	208/3			
RTU-C-1	PACKAGE HEAT PUMP	CARRIER	50HJ0004	77/44/34/550	3	36,700	26,600	13.1/	-	95	80/87	34,800	7.7/-	PACKAGE	DOWN	1200	1.0	B	1200	2	208/3/4.9	-	1	208	3	-	10.3	0.7	16.5	20	208/3			
RTU-C-2	PACKAGE HEAT PUMP	CARRIER	50HJ0005	73/44/34/560	4	46,300	35,600	13.0/	-	95	80/87	43,000	7.8/-	PACKAGE	DOWN	1600	1.0	B	1500	2	208/3/4.9	-	1	208	3	-	12.4	0.7	21.1	25	208/3			
RTU-D-1	PACKAGE HEAT PUMP	CARRIER	50HJ0006	73/44/42/830	5	63,800	45,600	13.0/	-	95	80/87	55,000	7.7/-	PACKAGE	DOWN	2000	1.0	B	1200	3	208/3/8.0	-	2	208	3	-	17.3	1.5	28.9	30	208/3			
RTU-N-1	PACKAGE HEAT PUMP	CARRIER	50HJ0008	75/57/33/870	7.5	91,300	67,500	/10.3	10.5	95	80/87	85/48	-/3.3/2.3	PACKAGE	DOWN	3000	1.0	B	880	3	208/3/8.5	-	2	208	3	-	(2)12.4	1.4	36.2	40	208/3			
RTU-N-2	PACKAGE HEAT PUMP	CARRIER	50HJ0008	75/57/33/870	7.5	91,300	67,500	/10.3	10.5	95	80/87	85/48	-/3.3/2.3	PACKAGE	DOWN	3000	1.0	B	880	3	208/3/8.5	-	2	208	3	-	(2)12.4	1.4	36.2	40	208/3			
RTU-N-3	PACKAGE HEAT PUMP	CARRIER	50HJ0010	75/57/36/1000	10	119,400	89,800	/10.3	10.4	95	80/87	114/64	-/3.3/2.2	PACKAGE	DOWN	4000	1.0	B	950	5	208/3/11.7	-	2	208	3	-	(2)19.3	1.4	56.8	60	208/3			
RTU-N-4	PACKAGE HEAT PUMP	CARRIER	50HJ0010	75/57/36/1000	10	119,400	89,800	/10.3	10.4	95	80/87	114/64	-/3.3/2.2	PACKAGE	DOWN	4000	1.0	B	950	5	208/3/11.7	-	2	208	3	-	(2)19.3	1.4	56.8	60	208/3			
RTU-D-1	PACKAGE HEAT PUMP	CARRIER	50HJ0010	75/57/36/1000	10	119,400	89,800	/10.3	10.4	95	80/87	114/64	-/3.3/2.2	PACKAGE	DOWN	4000	1.0	B	950	5	208/3/11.7	-	2	208	3	-	(2)19.3	1.4	56.8	60	208/3			
RTU-D-2	PACKAGE HEAT PUMP	CARRIER	50HJ0014	82/86/45/1895	12.5	148,000	110,000	/9.8	12.4	95	80/87	138/72	-/3.2/2.1	PACKAGE	DOWN	5000	1.0	B	1200	5	208/3/10.5	-	3	208	3	-	(3)17	65	100	208/3				
RTU-P-1	PACKAGE HEAT PUMP	CARRIER	50HJ0009	75/77/30/1030	8	102,000	77,200	/10.3	12.7	95	80/87	96/52	-/3.3/2.2	PACKAGE	DOWN	3400	1.0	B	880	3	208/3/8.8	-	2	208	3	-	(2)13.8	1.4	41.3	45	208/3			
RTU-P-2	PACKAGE HEAT PUMP	CARRIER	50EJ0024	185/82/73/4185	20	253,000	153,500	/9.5	10	95	80.5/70.4	228/115	-/3.3/2.0	PACKAGE	DOWN	8000	2.0	B	900	3	208/3/28	54	2	208	3	150	205.5	205.3	271.6	300	208/3			
RTU-P-3	PACKAGE HEAT PUMP	CARRIER	50HJ0008-3	73/44/42/830	5	63,800	45,600	13.0/	-	95	80/87	55,000	7.7/-	PACKAGE	DOWN	2000	1.0	B	1200	3	208/3/8.0	-	2	208	3	-	17.3	1.5	28.9	30	208/3			

GRILLE & DIFFUSER SCHEDULE											
MARK	TYPE	MANUF.	MODEL	NOM. CFM	NECK SIZE	PATTERN	K.C.	MATL.	FINISH	MOUNTING	COMMENTS
(A)	SUPPLY	TITUS	TMSA	50	12X12 4"	4-WAY	<29	2	1	6	
(B)	SUPPLY		TMSA	325	24X24 8"	4-WAY	<29	2	1	1	
(C)	SUPPLY		TMSA	550	24X24 12"	4-WAY	<29	2	1	1	
(D)	SUPPLY		ML-38	250	48" 3 SLOT	ADJ	<29	2	1	9	
(E)	SUPPLY		272-RL	150	6X8	SIDEWALL	<29	2	1	2	
(F)	SUPPLY		250AA	150	6X8 6"	4-WAY	<29	2	1	6	
(G)	SUPPLY		250AA	50	6X4 4"	4-WAY	<29	2	1	6	
(H)	RETURN		4-FL	2000	48X22	RET	<29	2	1	6	
(I)	RETURN		4-FL	1000	24X24	RET	<29	2	1	1	
(J)	EXHAUST		4-FL	150	10X10	EXH	<29	2	1	6	
(K)	RETURN		4-FL	300	12X12	RET	<29	2	1	6	
(L)	RETURN		4-FL	150	10X8	RET	<29	2	1	6	
(M)	EXHAUST		SG-LFD	50	6X8	EXH	<29	2	1	1	
(N)	SUPPLY		50-TDC	50	6X6	4-WAY	<29	2	1	1	

MATERIAL:
 1. STEEL
 2. ALUMINUM
 3. STAINLESS STEEL

FINISH:
 1. WHITE ENAMEL
 2. ANODIZED CLEAR
 3. NATURAL

MOUNTING:
 1. 24" X 24" LAY-N
 2. DRYWALL
 3. 13/16" BORDERS, 1/2" SLOT WIDTH, 3 SLOTS
 4. 13/16" BORDERS, 1/2" SLOT WIDTH, 6 SLOTS
 5. 72" X 32" NOMINAL SIZE
 6. 3 WAY
 7. SIDEWALL
 8. INSECT SCREEN
 9. MODULAR NEAR DIFFUSER PLENUMS

COMMENTS:
 1. OPPOSED BLADE DAMPER
 2. EQUALIZING DEFLECTOR
 3. 13/16" BORDERS, 1/2" SLOT WIDTH, 3 SLOTS
 4. 13/16" BORDERS, 1/2" SLOT WIDTH, 6 SLOTS
 5. 72" X 32" NOMINAL SIZE
 6. 3 WAY
 7. SIDEWALL
 8. INSECT SCREEN
 9. MODULAR NEAR DIFFUSER PLENUMS

SUPPLY UNIT WITH HUMIDIFIER OPTION, ROOM THERMOSTAT AND HUMIDISTAT

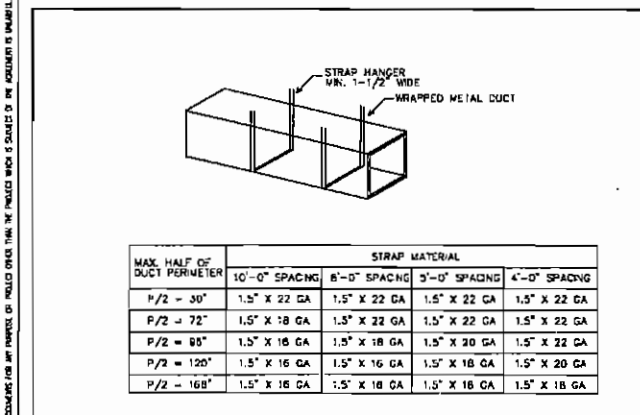
EXHAUST FAN SCHEDULE											
MARK	MFR.	MODEL	W	H	CFM	HP	VOLTS/Ø	COMMENTS			
EF-B-1	BREIGERT	FF-100	87	840	100	.125	120/1Ø	5.8			
EF-C-1	BREIGERT	FF-100	87	840	100	.125	120/1Ø	5.6			
EF-C-2	BREIGERT	FF-100	87	840	100	.125	120/1Ø	5.8			
EF-D-1	BREIGERT	DB-507	1/4	1000	160	.25	120/1Ø	1.4			
EF-N-1	BREIGERT	FF-100	87W	640	100	.125	120/1Ø	5			
EF-N-2	BREIGERT	FF-100	87W	640	100	.125	120/1Ø	5			
EF-N-3	BREIGERT	FF-100	87W	640	100	.125	120/1Ø	5			
EF-N-4	BREIGERT	FF-100	87W	640	100	.125	120/1Ø	5			
EF-N-5	BREIGERT	DS-809	1/4	1110	450	.25	120/1Ø	1.4			
EF-D-1	BREIGERT	FF-100	87W	640	100	.125	120/1Ø	5.6			
EF-D-2	BREIGERT	DB-509	1/4	1100	700	.25	120/1Ø	1.4			
EF-P-1	BREIGERT	DB-614	1/4	1300	300	.25	120/1Ø	1.4			
EF-P-2	BREIGERT	DS-615	1/4	1400	350	.25	120/1Ø	1.4			

SUPPLY WITH ROOF CURB

PUTNAM COUNTY GOVERNMENTAL COMPLEX VAV BOX SCHEDULE											
ZONE AND BY-PASS DAMPER SCHEDULE											
MARK	CFM	MAX/MIN	MANUFACTURER	MODEL	NOM. SIZE	HEATER	HEATER	CONTROL	PACKAGE	DESCRIPTION	
V-B-1	2250	NAILOR	3001-14	16X10 OVAL	24X12	-	-	208V/1Ø	-		
V-B-2	905	NAILOR	3001-10	10"Ø	14X12	6 KW	208V/1Ø	-	-		
V-B-3	770	NAILOR	3001-9	9"Ø	14X12	5 KW	208V/1Ø	-	-		
V-B-4	2800	NAILOR	3001-16	20X10 OVAL	28X12	-	120V/1Ø	-	BYPASS		
DESCRIPTION											
V-N-1	1485/252	NAILOR	3001-12	12X10 OVAL	18X12	7.5 KW	208V/1Ø	-	-		
V-N-2	1800/235	NAILOR	3001-12	12X10 OVAL	18X12	7.5 KW	208V/1Ø	-	-		
V-N-3	300/84	NAILOR	3001-5	5"Ø	10X12	2.5 KW	208V/1Ø	-	-		
V-N-4	900/92	NAILOR	3001-8	8"Ø	14X12	5 KW	-	-	-		
V-N-5	1325/298	NAILOR	3001-12	12X10 OVAL	18X12	7.5 KW	208V/1Ø	-	-		
V-N-6	630/	NAILOR	3001-8	8"Ø	12X12	4.0 KW	-	-	-		
V-N-7	850/	NAILOR	3001-9	9"Ø	14X12	5 KW	208V/1Ø	-	-		
V-N-8	1650/	NAILOR	3001-12	12X10 OVAL	18X12	7.5 KW	208V/1Ø	-	-		
V-N-9	850/	NAILOR	3001-9	9"Ø	12Wx12.5H	5 KW	-	-	-		
V-N-10	1680	NAILOR	3001-14	16X10 OVAL	24X12	10 KW	-	-	-		
V-N-11	890	NAILOR	3001-8	8"Ø	12X12	4 KW	-	-	-		
V-N-12	1700	NAILOR	3001-12	12X10 OVAL	18X12	7.5 KW	-	-	-		
V-N-13	2100	NAILOR	3001-14	16X10 OVAL	24X12	-	120V/1Ø	-	-	BYPASS	
V-N-14	2800	NAILOR	3001-16	20X10 OVAL	28X12	-	120V/1Ø	-	-	BYPASS	
V-N-15	2800	NAILOR	3001-16	20X10 OVAL	28X12	-	120V/1Ø	-	-	BYPASS	
V-N-16	2100	NAILOR	3001-14	16X10 OVAL	24X12	-	120V/1Ø	-	-	BYPASS	
V-O-1	780/	NAILOR	3001-9	9"Ø	14X12	5 KW	208V/1Ø	-	-		
V-O-2	1160/	NAILOR	3001-12	12X10 OVAL	18X12	7.5 KW	208V/1Ø	-	-		
V-O-3	1005/	NAILOR	3001-10	10"Ø	14X12	6 KW	208V/1Ø	-	-		
V-O-4	975	NAILOR	3001-10	10"Ø	14X12	6 KW	208V/1Ø	-	-		
V-O-5	590/	NAILOR	3001-7	7"Ø	12X12	2.5 KW	208V/1Ø	-	-		
V-O-6	400/	NAILOR	3001-6	6"Ø	10X10	2.5 KW	208V/1Ø	-	-		
V-O-7	1085/	NAILOR	3001-10	10"Ø	14X12	6.0 KW	208V/1Ø	-	-		
V-O-8	1380/	NAILOR	3001-12	12X10 OVAL	18X12	7.5 KW	208V/1Ø	-	-		
V-O-9	760/	NAILOR	3001-9	9"Ø	14X12	5 KW	208V/1Ø	-	-		
V-O-10	600/	NAILOR	3001-8	8"Ø	12X12	4	208V/1Ø	-	-		
V-O-11	2800	NAILOR	3001-16	20X10 OVAL	28X12	-	120V/1Ø	-	-	BYPASS	
V-O-12	2800	NAILOR	3001-16	20X10 OVAL	28X12	-	120V/1Ø	-	-	BYPASS	
V-P-1	950/150	NAILOR	3001-10	10"Ø	14X12	2.0 KW	208V/1Ø	-	-		
V-P-2	1200/200	NAILOR	3001-10								

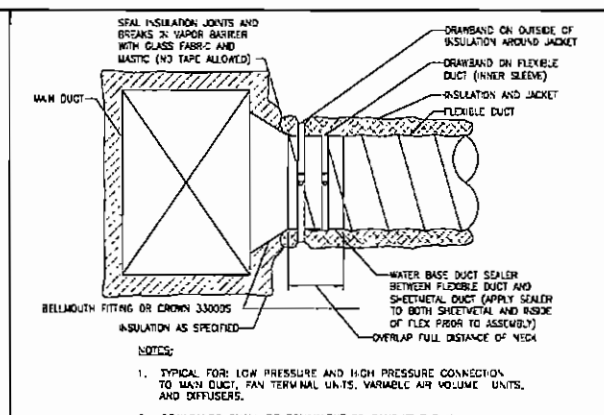
RENOVATIONS TO P.C. GOV. COMPLEX

RENOVATIONS TO P.C. GOV. COMPLEX



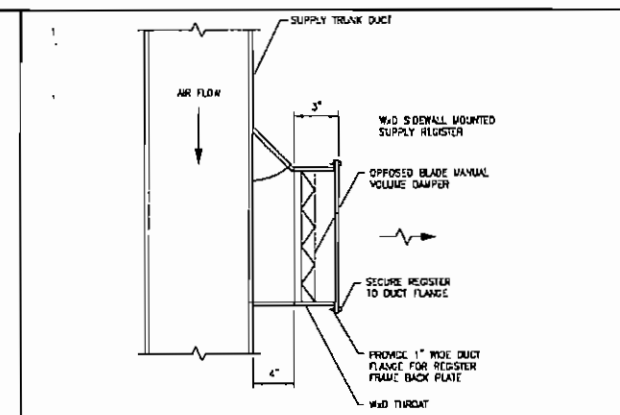
MAX. HALF OF DUCT PERIMETER	STRAP MATERIAL			
	10'-0" SPACING	8'-0" SPACING	5'-0" SPACING	4'-0" SPACING
P/2 = 30"	1.5" X 22 GA	1.5" X 22 GA	1.5" X 22 GA	1.5" X 22 GA
P/2 = 72"	1.5" X 18 GA	1.5" X 22 GA	1.5" X 22 GA	1.5" X 22 GA
P/2 = 85"	1.5" X 18 GA	1.5" X 18 GA	1.5" X 20 GA	1.5" X 22 GA
P/2 = 120"	1.5" X 16 GA	1.5" X 16 GA	1.5" X 18 GA	1.5" X 20 GA
P/2 = 168"	1.5" X 16 GA	1.5" X 18 GA	1.5" X 18 GA	1.5" X 18 GA

SHEETMETAL DUCT SUPPORT DETAIL DET #1 SHT MB.2

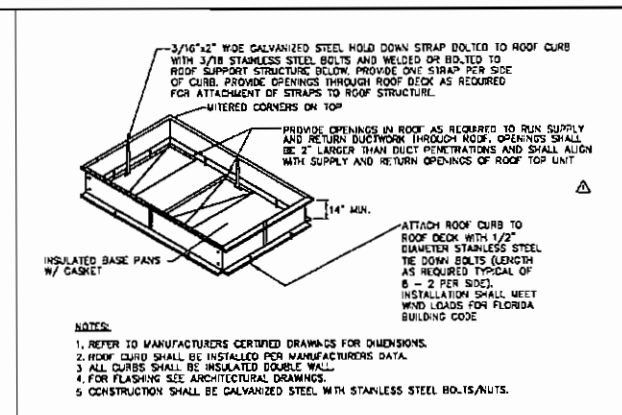


- NOTES:
1. TYPICAL FOR LOW PRESSURE AND HIGH PRESSURE CONNECTION TO MAIN DUCT, FAN TERMINAL UNITS, VARIABLE AIR VOLUME UNITS, AND DIFFUSERS.
 2. DRAWBANDS SHALL BE EQUIVALENT TO PANDUIT P.L.T.H.

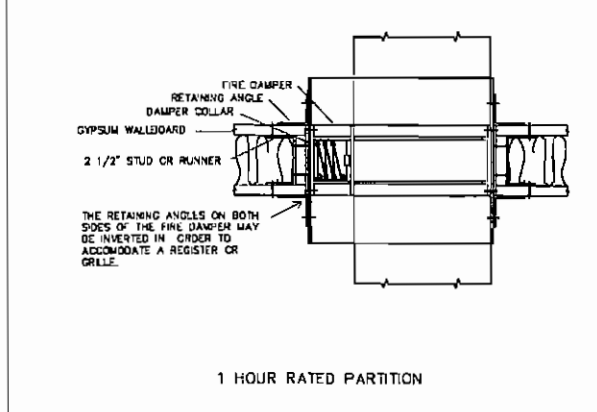
FLEXIBLE DUCT TAKEOFF DETAIL DET #2 SHT MB.2



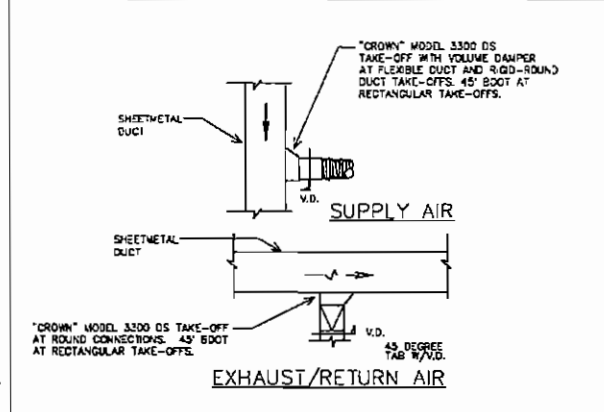
RECTANGULAR DUCT TAKEOFF DETAIL DET #3 SHT MB.2



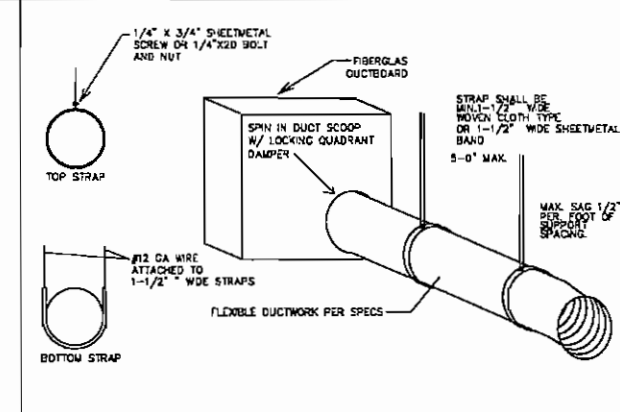
ROOF MOUNTING CURB DETAIL DET #4 NTS SHT MB.2



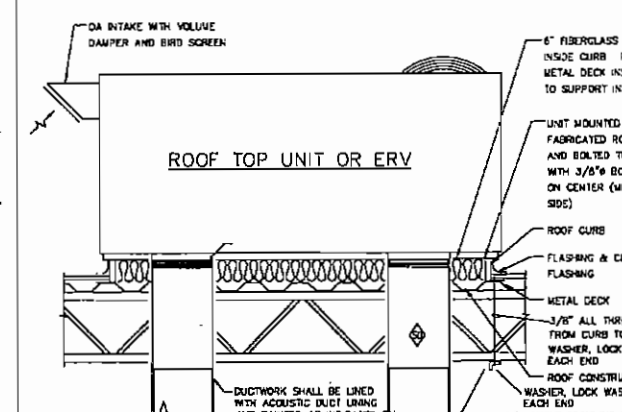
TYP. HORIZONTAL FIRE DAMPER DET #5 NTS SHT MB.3



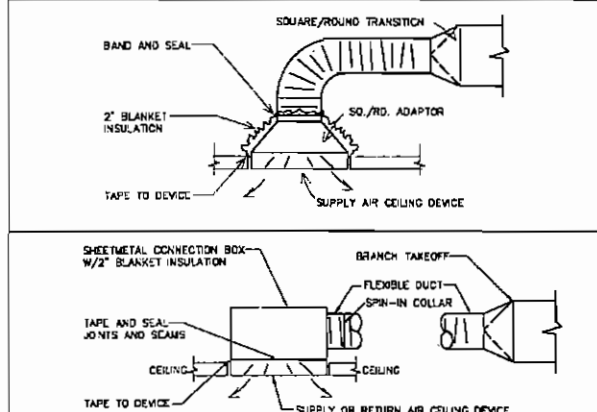
AIR DUCT DETAILS DET #6 SHT MB.3



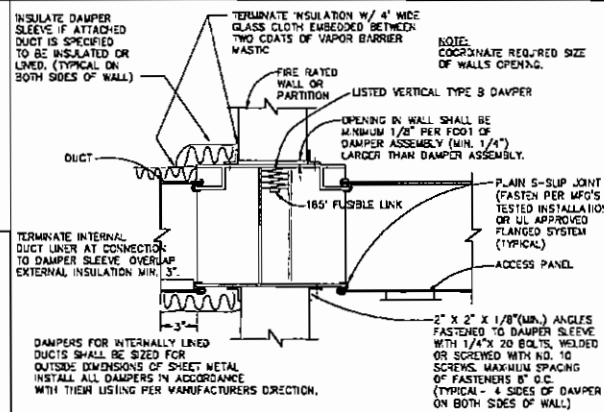
FLEXIBLE SUPPORTS DETAIL DET #7 NTS SHT MB.3



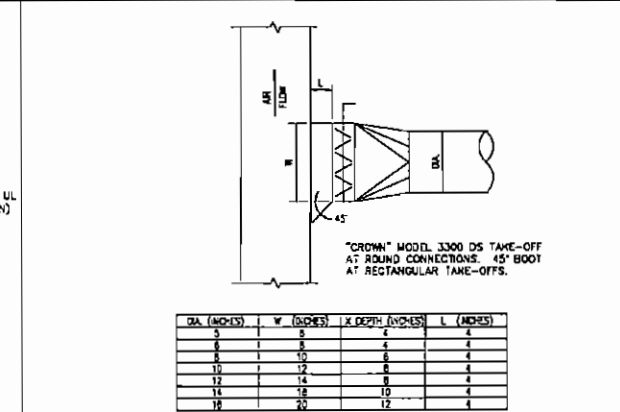
TYPICAL ROOF MOUNTING DETAIL DET #8 NTS SHT MB.3



DIFFUSER CONNECTIONS DET #9 NTS SHT MB.3



FIRE DAMPER DETAIL DET #10 SHT MB.3



ROUND DUCT TAKEOFF DETAIL DET #10 SHT MB.3

SKINNER VIGNOLA McLEAN, INC.
ARCHITECTS & PLANNERS
1628 N. W. 8th Street
Gainesville, Florida 32609
Florida Certificate No. AA3478
Phone (352) 378-4400
Fax (352) 377-5378



RENOVATIONS FOR THE
PUTNAM COUNTY
GOVERNMENTAL COMPLEX
PALATKA, FL SVM #00505

Scale: As shown
Date: 04/26/07
Drawn by: C.A.S.
Checked by: R.E.C.

DATE: 04/26/07
DRAWN BY: C.A.S.
CHECKED BY: R.E.C.
REVISIONS:
HVAC DETAILS
SHEET M8.2
OF 00

RENOVATIONS TO P.C. GOV. COMPLEX