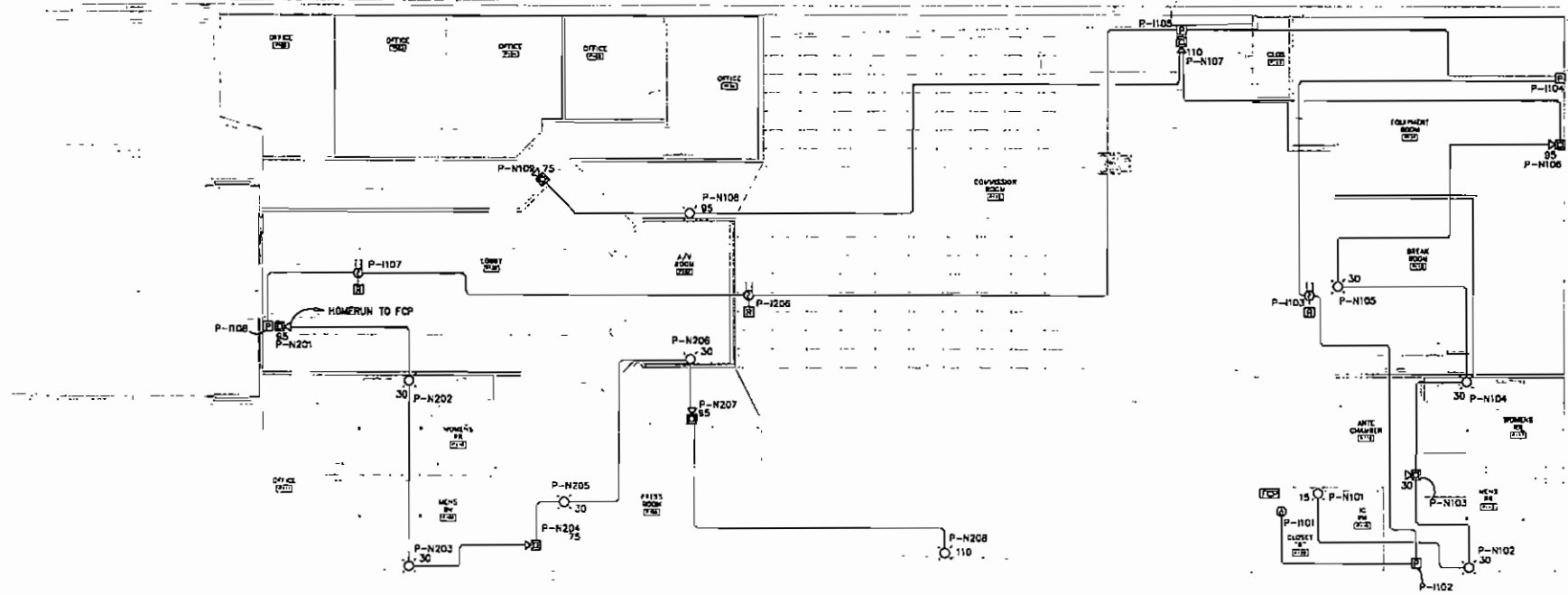


ALL NOTES, MARKS, SPECIFICATIONS, COMMENTS, ETC. SHALL HAVE LINE AND DATE INDICATED AND INITIALS OF THE DESIGN PROFESSIONAL. THE DESIGN PROFESSIONAL IS RESPONSIBLE FOR THE DESIGN PROFESSIONAL'S OF WORK SHOWN. THE DESIGN PROFESSIONAL SHALL BE RESPONSIBLE FOR THE DESIGN PROFESSIONAL'S OF WORK SHOWN. THE DESIGN PROFESSIONAL SHALL BE RESPONSIBLE FOR THE DESIGN PROFESSIONAL'S OF WORK SHOWN.



### FIRE ALARM LEGEND

	FIRE ALARM PULL STATION MTD UP 48"
	FIRE ALARM HORN SIGNALING DEVICE MTD UP 84"
	FIRE ALARM COMBINATION HORN/SIROBE SIGNALING DEVICE MTD UP 84" X - SIROBE CANDELLA POWER
	VISUAL SIROBE SIGNALING DEVICE MTD UP 84" X - SIROBE CANDELLA POWER
	HEAT DETECTOR-SURFACE OR WALL MTD
	SMOKE DETECTOR-SURFACE OR WALL MTD
	FLOW SWITCH/TAMPER SWITCH
	FIRE ALARM CONTROL PANEL
	DUCT MOUNTED SMOKE DETECTOR
	FIRE ALARM PANEL
	FIRE SYSTEM ANNUNCIATOR PANEL
	FAN SHUTDOWN RELAY
	REMOTE TEST STATION WITH TEST SWITCH, LED AND LOCAL HORN

Table 7.5.4.11 (a) Room Spacing for Wall-Mounted Visible Appliances

Maximum Room Size (ft)	Minimum Required Light Output (Effective Intensity)		
	One Light per Room	Two Lights per Room (Located on Opposite Walls)	Four Lights per Room (One Light per Wall)
20x20	15	NA	NA
28x28	10	UNKNOW	UNKNOW
30x30	14	15	NA
40x40	60	30	15
48x48	75	UNKNOW	UNKNOW
50x50	94	60	30
54x54	110	UNKNOW	UNKNOW
60x60	135	90	30
70x70	184	90	60
80x80	240	135	60
90x90	304	185	90
100x100	375	240	90
110x110	455	240	135
120x120	540	305	135
130x130	635	375	185

## BLDG P FIRE ALARM PLAN

SCALE: 1/8"=1'-0"

**SKINNER VIGNOLA McLEAN, INC.**  
ARCHITECTS & PLANNERS  
1628 N. W. 5th Street  
Gainesville, Florida 32609  
Florida Certificate No. AA 1478  
(352) 378-4400  
AX (352) 377-3378

RENOVATIONS FOR THE  
PUTNAM COUNTY  
GOVERNMENTAL COMPLEX  
PALATKA, FL SVN #00505

When used in accordance with the Florida Building Code, this plan shall be used in conjunction with the Florida Building Code, Part II, Chapter 9, Section 905.2.1. The Florida Building Code, Part II, Chapter 9, Section 905.2.1. The Florida Building Code, Part II, Chapter 9, Section 905.2.1.

DATE: 04/26/07

DRAWN BY: C.A.S.

CHECKED BY: R.E.C.

REVISIONS:


BUILDING P  
FIRE ALARM  
SHEET

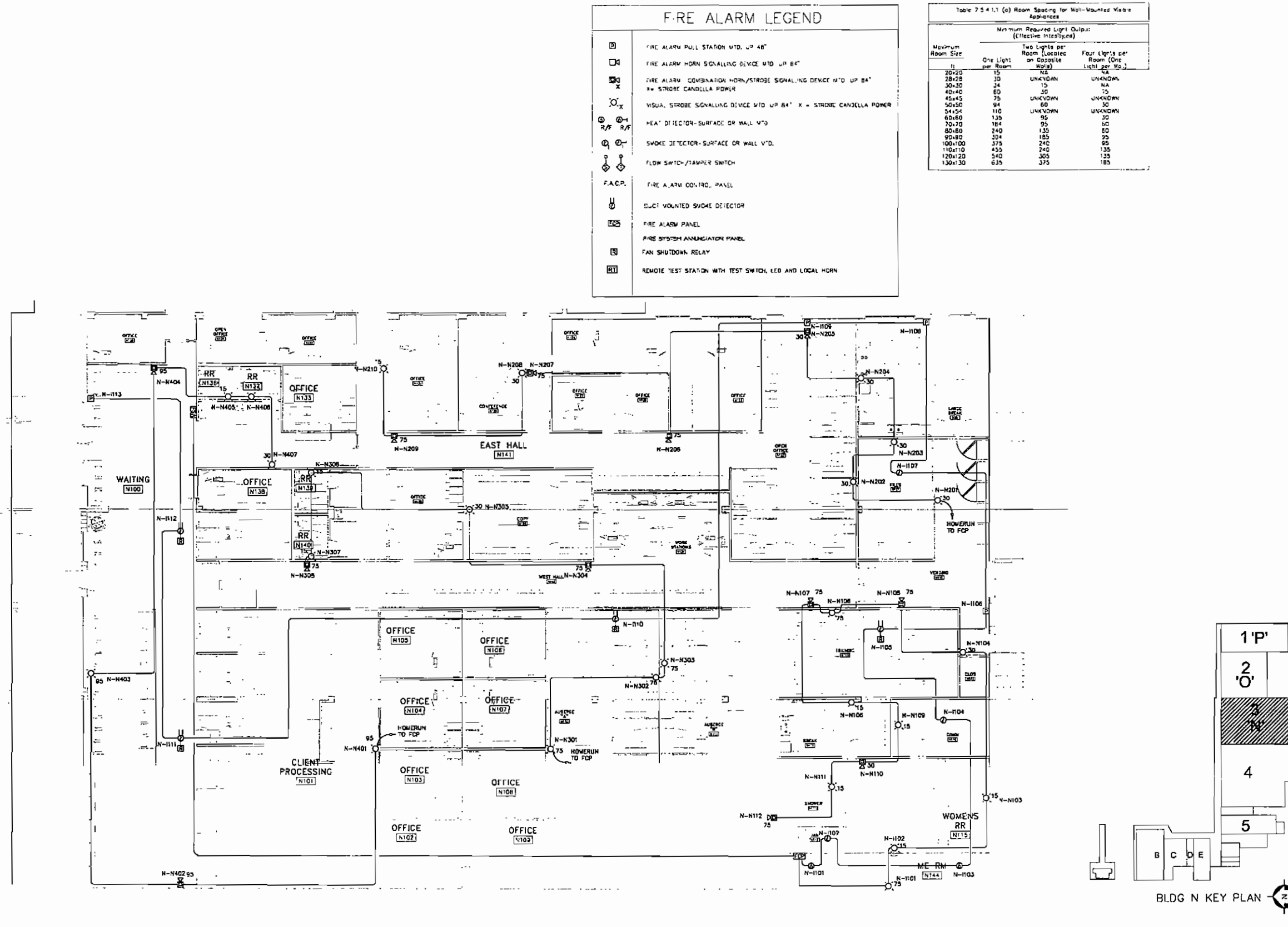
FA 11  
of 00



RENOVATIONS TO P.C. GOV. COMPLEX

RENOVATIONS TO P.C. GOV. COMPLEX

ALL RIGHTS ARE RESERVED. THIS DRAWING IS THE PROPERTY OF SKINNER VIGNOLA ARCHITECTS & PLANNERS. NO PART OF THIS DRAWING IS TO BE REPRODUCED OR TRANSMITTED IN ANY FORM OR BY ANY MEANS, ELECTRONIC OR MECHANICAL, INCLUDING PHOTOCOPYING, RECORDING, OR BY ANY INFORMATION STORAGE AND RETRIEVAL SYSTEM. WITHOUT THE WRITTEN PERMISSION OF SKINNER VIGNOLA ARCHITECTS & PLANNERS. THIS DRAWING IS THE PROPERTY OF SKINNER VIGNOLA ARCHITECTS & PLANNERS. NO PART OF THIS DRAWING IS TO BE REPRODUCED OR TRANSMITTED IN ANY FORM OR BY ANY MEANS, ELECTRONIC OR MECHANICAL, INCLUDING PHOTOCOPYING, RECORDING, OR BY ANY INFORMATION STORAGE AND RETRIEVAL SYSTEM. WITHOUT THE WRITTEN PERMISSION OF SKINNER VIGNOLA ARCHITECTS & PLANNERS.

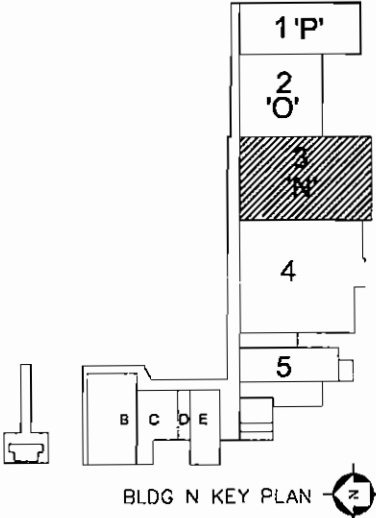


FIRE ALARM LEGEND

- FIRE ALARM PULL STATION W/D UP 48"
- FIRE ALARM HORN SIGNALING DEVICE W/D UP 84"
- FIRE ALARM COMBINATION HORN/STROBE SIGNALING DEVICE W/D UP 84"  
\*\* STROBE CANCELLED POWER
- VISUAL STROBE SIGNALING DEVICE W/D UP 84" X = STROBE CANCELLED POWER
- HEAT DETECTOR-SURFACE OR WALL W/D
- SMOKE DETECTOR-SURFACE OR WALL W/D
- FLOW SWITCH/TAMPER SWITCH
- F.A.C.P. FIRE ALARM CONTROL PANEL
- WALL MOUNTED SMOKE DETECTOR
- FIRE ALARM PANEL
- FIRE SYSTEM ANNUNCIATOR PANEL
- FAN SHUTDOWN RELAY
- REMOTE TEST STATION WITH TEST SWITCH, LED AND LOCAL HORN

Table 7.5.4.1.1 (a) Room Spacing for Wall-Mounted Wall-Flush Appliances

Maximum Room Size	Minimum Required Light Output (Effective Intensity)		
	One Light per Room	Two Lights per Room (Located on Opposite Walls)	Four Lights per Room (One Light per Wall)
20x20	15	NA	NA
28x28	30	UNKNOWN	UNKNOWN
30x30	34	15	NA
40x40	60	30	15
45x45	75	UNKNOWN	UNKNOWN
50x50	94	60	30
54x56	110	UNKNOWN	UNKNOWN
60x60	135	95	30
70x70	184	135	60
80x80	240	185	95
90x90	304	240	135
100x100	375	305	185
110x110	455	375	240
120x120	540	455	305
130x130	635	540	375



BLDG N FIRE ALARM PLAN

SCALE: 1/8"=1'-0"

**SKINNER VIGNOLA MCGLEAN, INC.**  
ARCHITECTS & PLANNERS  
1628 N. W. 8th Street  
Gainesville, Florida 32609  
Florida Certificate No. AA3478  
Tel: (352) 378-4400  
Fax: (352) 377-5378



RENOVATIONS FOR THE  
PUTNAM COUNTY  
GOVERNMENTAL COMPLEX  
PALATKA, FL SVM #00505

Skinner Vignola McGlean, Inc.  
ARCHITECTS & PLANNERS  
1628 N. W. 8th Street  
Gainesville, Florida 32609  
Florida Certificate No. AA3478  
Tel: (352) 378-4400  
Fax: (352) 377-5378

DATE: 04/26/07

DRAWN BY: C.A.S.

CHECKED BY: R.E.C.

REVISIONS:  
 ▲  
 ▲  
 ▲  
 ▲  
 ▲

BUILDING N  
FIRE ALARM

SHEET  
FA31

RENOVATIONS TO P.C. GOV. COMPLEX

RENOVATIONS TO P.C. GOV. COMPLEX

RENOVATIONS TO P.C. GOV. COMPLEX

RENOVATIONS TO P.C. GOV. COMPLEX

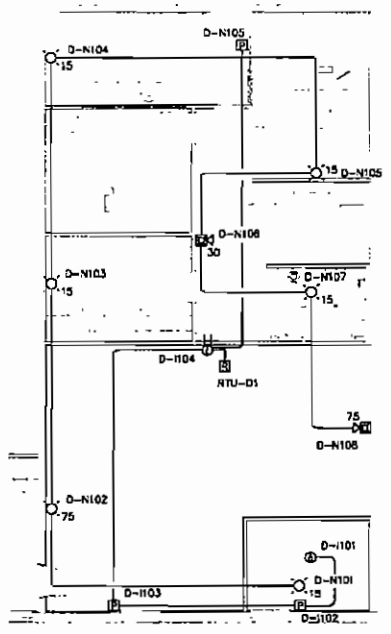
ALL REPORTS, PLANS, SPECIFICATIONS, DRAWINGS, ETC. FILED WITH THE STATE ARCHIVES AND MADE AVAILABLE TO THE PUBLIC. THE STATE ARCHIVES, 1000 N. GORRISON AVENUE, SUITE 100, GAINESVILLE, FLORIDA 32609. SEE OF THESE DRAWINGS FOR ANY ADDITIONAL INFORMATION REGARDING THE ARCHIVES. THE ARCHIVES PROFESSIONAL ARCHITECTS, INC. IS AN EQUAL OPPORTUNITY EMPLOYER. ALL RIGHTS RESERVED. NO PART OF THIS DOCUMENT IS TO BE REPRODUCED OR TRANSMITTED IN ANY FORM OR BY ANY MEANS, ELECTRONIC OR MECHANICAL, INCLUDING PHOTOCOPYING, RECORDING, OR BY ANY INFORMATION STORAGE AND RETRIEVAL SYSTEM, WITHOUT PERMISSION IN WRITING FROM ARCHITECTS VIGNOLA McLEAN, INC.

Table 7.5.4.11 (a) Room Spacing for Wall-Mounted Visible Appliances

Maximum Room Size ft	Minimum Required Light Output (Effective Intensity)		
	One light per Room	Two lights per Room (Located on Opposite Walls)	Four lights per Room (One Light per Wall)
70x20	15	NA	NA
45x28	30	UNKNOWN	UNKNOWN
30x30	24	3	NA
40x40	60	30	15
45x45	15	UNKNOWN	UNKNOWN
30x50	34	60	30
50x54	110	UNKNOWN	UNKNOWN
60x60	135	30	30
70x70	154	35	60
80x80	240	135	60
90x90	304	165	95
100x100	375	240	95
110x110	455	240	135
120x120	540	305	135
130x130	635	375	185

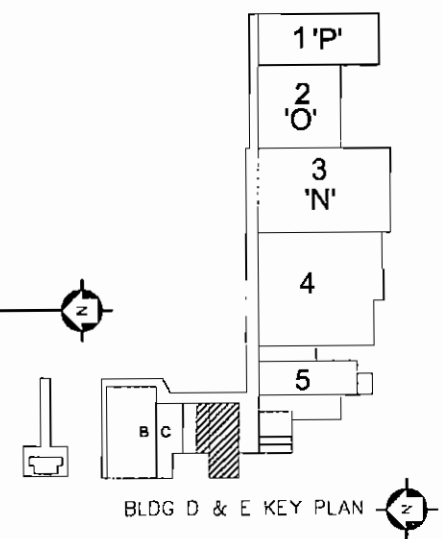
### FIRE ALARM LEGEND

- FIRE ALARM PULL STATION MTD UP 48"
- FIRE ALARM HORN SIGNALING DEVICE MTD UP 84"
- FIRE ALARM CORNER HORN/SROBE SIGNALING DEVICE MTD UP 84"  
F - STROBE CANDELLA POWER
- VISUAL STROBE SIGNALING DEVICE MTD UP 84" X - STROBE CANDELLA POWER
- HEAT DETECTOR-SURFACE OR WALL MTD
- SMOKE DETECTOR-SURFACE OR WALL MTD
- FLOW SWITCH/TAMPEN SWITCH
- FIRE ALARM CONTROL PANEL
- DUCT MOUNTED SMOKE DETECTOR
- FIRE ALARM PANEL
- FIRE SYSTEM ANNUNCIATOR PANEL
- FAN SHUTDOWN RELAY
- REMOTE TEST STATION WITH TEST SWITCH, LED AND LOCAL HORN



## BLDG D&E FIRE ALARM PLAN

SCALE: 1/8"=1'-0"



**SKINNER VIGNOLA McLEAN, INC.**  
 ARCHITECTS & PLANNERS  
 1628 N. W. 61st Street  
 Gainesville, Florida 32609  
 Florida Certificate No. AA3418  
 (352) 378-4400  
 FAX (352) 377-5378

RENOVATIONS FOR THE  
 PUTNAM COUNTY  
 GOVERNMENTAL COMPLEX  
 PALATKA, FL SVN #00505

*Valley and Associates, Inc.*  
 PROFESSIONAL ARCHITECTS  
 1000 N. GORRISON AVENUE, SUITE 100  
 GAINESVILLE, FLORIDA 32609  
 PHONE (352) 378-4400  
 FAX (352) 377-5378

DATE: 04/25/07  
 DRAWN BY: C.A.S.  
 CHECKED BY: R.E.C.  
 REVISIONS:  
 BUILDING D&E  
 FIRE ALARM  
 SHEET  
**FA.61**  
 00

RENOVATIONS TO P.C. GOV. COMPLEX

RENOVATIONS TO P.C. GOV. COMPLEX

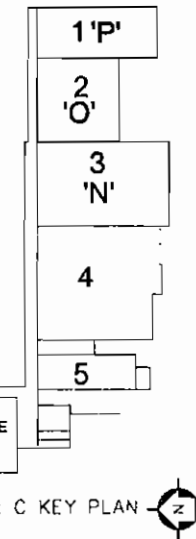
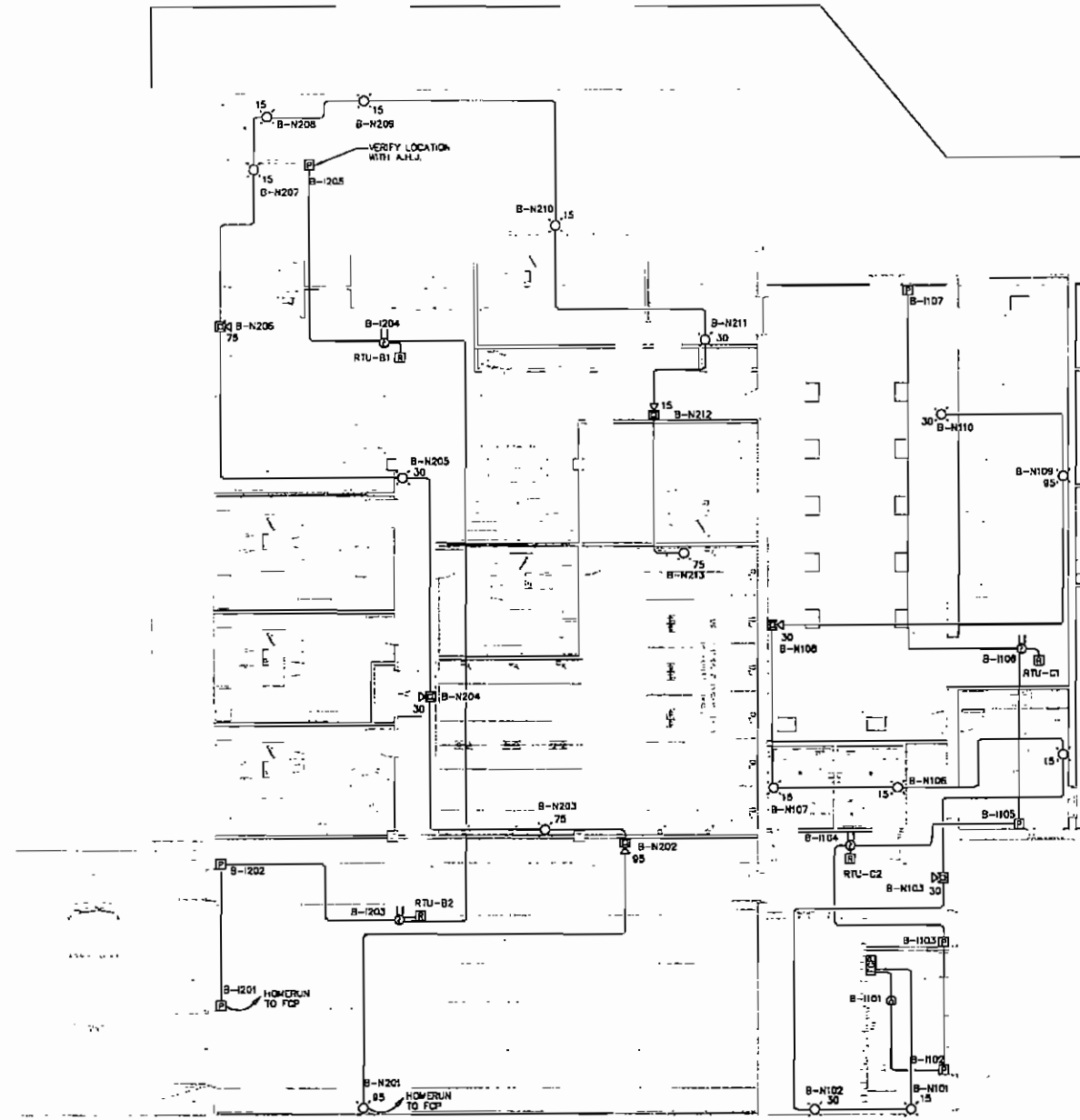
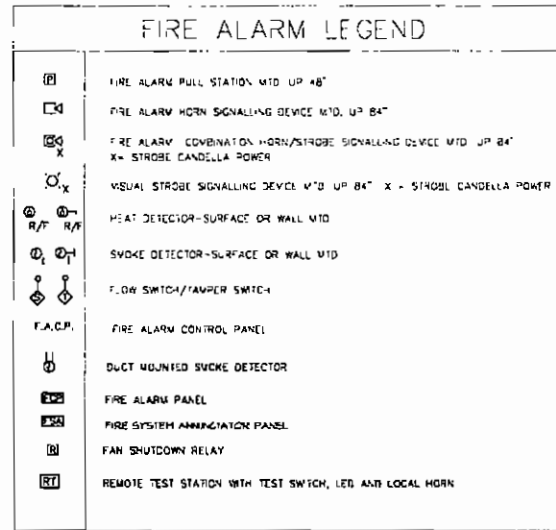
RENOVATIONS TO P.C. GOV. COMPLEX

RENOVATIONS TO P.C. GOV. COMPLEX

ALL RIGHTS RESERVED. THIS DRAWING IS THE PROPERTY OF SKINNER VIGNOLA ARCHITECTS & PLANNERS. NO PART OF THIS DRAWING IS TO BE REPRODUCED OR TRANSMITTED IN ANY FORM OR BY ANY MEANS, ELECTRONIC OR MECHANICAL, INCLUDING PHOTOCOPYING, RECORDING, OR BY ANY INFORMATION STORAGE AND RETRIEVAL SYSTEM, WITHOUT THE WRITTEN PERMISSION OF SKINNER VIGNOLA ARCHITECTS & PLANNERS.

Table 7.5.4.11 (a) Room Spacing for Wall-Mounted Visible Appliances

Maximum Room Size	Minimum Required Light Output (Effective Intensity)		
	One Light per Room	Two Lights per Room (located on opposite Walls)	Four Lights per Room (One Light per Wall)
25x20	15	NA	NA
28x28	30	UNKOWN	UNKOWN
30x20	30	15	NA
40x40	60	30	15
45x45	75	UNKOWN	UNKOWN
50x30	90	60	30
54x24	10	UNKOWN	UNKOWN
60x60	135	90	30
70x70	180	90	60
80x80	240	135	60
90x90	270	180	90
100x100	375	240	90
110x110	450	240	135
120x120	540	300	135
130x130	630	375	180



BLDGS B&C FIRE ALARM PLAN  
SCALE: 1/8"=1'-0"

**SKINNER VIGNOLA McLEAN, INC.**  
ARCHITECTS & PLANNERS  
1628 N. W. 6th Street  
Gainesville, Florida 32609  
Florida Certificate No. AA3478  
(352) 378-4400  
FAX (352) 371-3378

RENOVATIONS FOR THE  
PUTNAM COUNTY  
GOVERNMENTAL COMPLEX  
PALATKA, FL SVM #00505

*Skinner and Associates, Inc.*  
Architects and Planners  
1628 N.W. 6th Street  
Gainesville, Florida 32609  
Florida Certificate No. AA3478  
SVM #00505

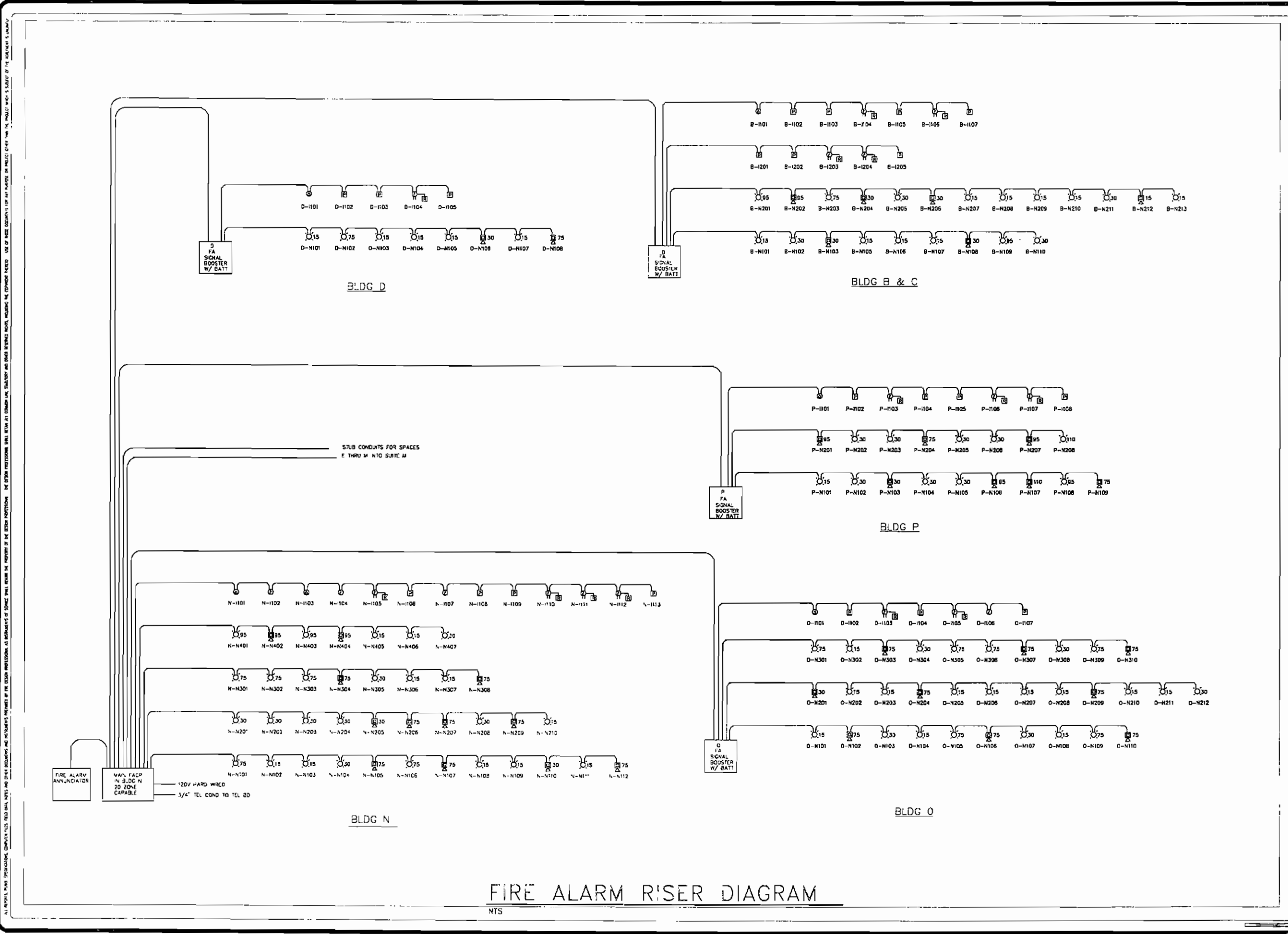
DATE: 04/26/07  
DRAWN BY: C.A.S.  
CHECKED BY: R.E.C.  
REVISIONS:  
BUILDINGS B&C  
FIRE ALARM  
SHEET  
FA.7.1

RENOVATIONS TO P.C. GOV. COMPLEX

RENOVATIONS TO P.C. GOV. COMPLEX

RENOVATIONS TO P.C. GOV. COMPLEX

RENOVATIONS TO P.C. GOV. COMPLEX



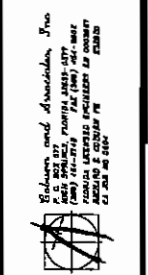
FIRE ALARM RISER DIAGRAM

NTS

**SKINNER VIGNOLA McLEAN, INC.**  
ARCHITECTS & PLANNERS  
1628 N. W. 6th Street  
Gainesville, Florida 32609  
Florida Certificate No. AA3418  
(352) 378-4100  
FAX (352) 377-5378



RENOVATIONS FOR THE  
PUTNAM COUNTY  
GOVERNMENTAL COMPLEX  
PALATKA, FL SVL #00505



DATE: 04/26/07

DRAWN BY: C.A.S

CHECKED BY: R.E.C

REVISIONS:

- △
- △
- △
- △

FIRE ALARM RISER

SHEET

FA8.1  
00

RENOVATIONS TO P.C. GOV. COMPLEX

RENOVATIONS TO P.C. GOV. COMPLEX