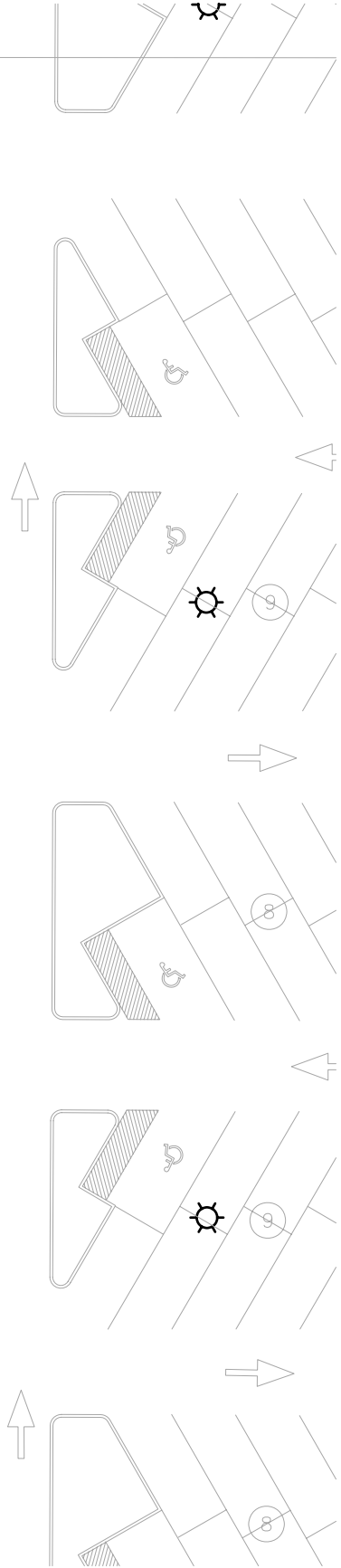
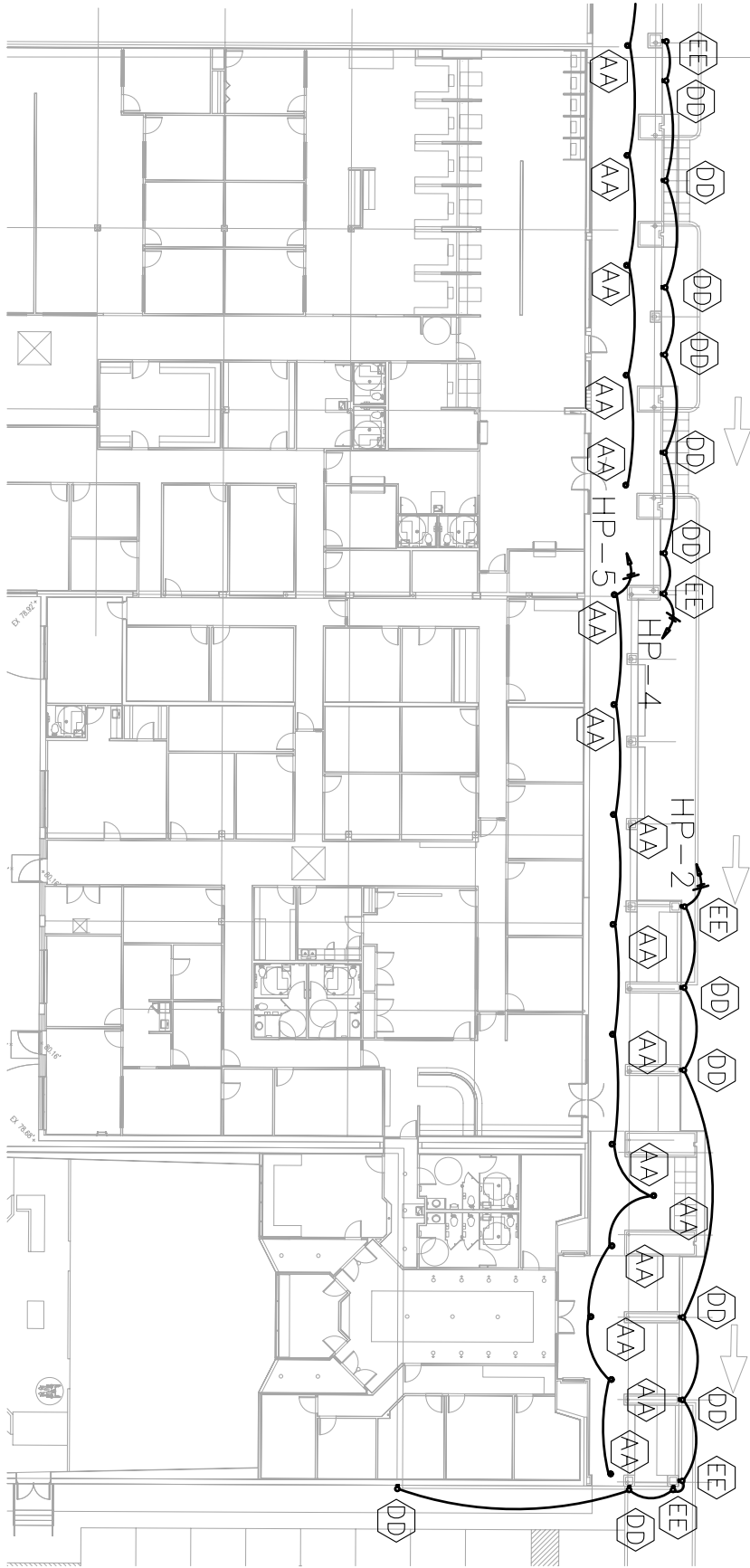


PUTNAM COUNTY GOVERNMENT COMPLEX

NTS

COBURN AND ASSOCIATES, INC
 P.O. BOX 577 HIGH SPRINGS, FLORIDA 32655-0577
 (386) 454-3748 FAX (386) 454-2652

SK-E0.1-1
 5-14-07



PUTNAM COUNTY GOVERMENT COMPLEX

NTS

COBURN AND ASSOCIATES, INC
 P.O. BOX 577 HIGH SPRINGS, FLORIDA 32655-0577
 (386) 454-3748 FAX (386) 454-2652

SK-E0.1-2

5-14-07

LIGHTING FIXTURES

MARK	DESCRIPTION
	2'X4' FLUORESCENT TAVIN FIXTURE WITH (4) F32T8 LAMPS

MARK	DESCRIPTION
	NUMBER CAPRI #CIV10-1130-V03VDF.
BB	GROUND MTD FLOOD LIGHT FOR SIGN. 120V. 70 WATT METAL HALIDE LAMP. ONE PIECE DIE CAST ALUMINUM. WIDE FLOOD. MODEL NUMBER KIM #CFL1/70PMH120/DBP.
CC	IN GROUND FLAG POLE SPOT LIGHT. COMPOSITE HOUSING WITH CLEAR, TEMPERED BOROSILICATE GLASS LENS. SPOT BEAM SPREAD. (1) 175 WATT METAL HALIDE LAMP, 120V. MODEL NUMBER KIM #LTV10/SP/175MH/120.
DD	WALL MOUNTED GOOSENECK FIXTURE FOR FAÇADE. LISTED FOR OUTDOOR USE. 70 WATT METAL HALIDE LAMP, 120V. BRONZE PAINT FINISH (VERIFY FINISH WITH ARCHITECT). MODEL NUMBER TREND#A14-B-B2-B-MH-OD-SMALL GLASS JAR. MOUNT CENTER OF FIXTURE HANGER AT 20'-8" AFF.
EE	WALL MOUNTED UPLIGHT, UL LISTED FOR WET LOCATION IN THE INVERTED POSITION. MEDIUM THROW DISTRIBUTION. 50 WATT METAL HALIDE LAMP, 120V. BRONZE PAINT FINISH (VERIFY WITH ARCHITECT). MODEL NUMBER GARDCO#102-MT-50MH-120-BRP-WLU. MOUNT BOTTOM OF FIXTURE AT 19'-8".
FF	WALL MOUNTED DOWN LIGHT. UL LISTED FOR WET LOCATION. MEDIUM THROW DISTRIBUTION. 42 WATT FLOURESCENT LAMP, 120V. BRONZE PAINT FINISH (VERIFY FINISH WITH ARCHITECT). MODEL NUMBER GARDCO#104-MT-42TRF-120-BRP. MOUNT FIXTURE AT 8' AFF.
X	UNIVERSAL MOUNT WHITE ABS EXT SIGN WITH RED LED LAMP, INIVERSAL FACE WITH CHEVRON DIRECTIONAL KNOCKOUTS, 120.277 SELECTABLE VOLTAGE. MODEL NUMBER EQUAL TO BEGHELLI #VA4RSA.

PUTNAM COUNTY GOVERNMENT COMPLEX

NTS

COBURN AND ASSOCIATES, INC
 P.O. BOX 577 HIGH SPRINGS, FLORIDA 32655-0577
 (386) 454-3748 FAX (386) 454-2652

SK-E1.1-1

5-14-07

PANEL 'HP'

VOLTAGE: 208Y/120, 3-Ø
 4 WIRE
 HOUSE PANEL

FED FROM: NA
 CONDUIT: 2"
 FEEDER: #3/0

200 MLO
 AIC

SURFACE
 RECESSED

CKT NO.	BKR.	WIRE	LOAD DESCRIPTION	LIGHTS	RECEPS	FIXED LOAD	COMPRES SORS	MOTORS	HEAT STRIPS	SPARES	CKT. CONN LOAD	CKT. CALCD LOAD
1	1P-20	3#12, 1/2"C	WALKWAY LTG	1080							1080	1350
3	1P-20	3#12, 1/2"C	WALKWAY LTG	1080							1080	1350
5	1P-20	3#12, 1/2"C	WALKWAY LTG	1080							1080	1350
7	1P-20		SPARE							1000	1000	1000
9	1P-20		SPARE							1000	1000	1000
11	1P-20		SPARE							1000	1000	1000
13											0	0
15											0	0
17											0	0
19											0	0
21											0	0
23											0	0
25											0	0
27											0	0
29											0	0
31											0	0
33											0	0
35											0	0
37											0	0
39											0	0
41											0	0
2	1P-20	3#12, 1/2"C	FAÇADE LTG	510							510	638
4	1P-20	3#12, 1/2"C	FAÇADE LTG	440							440	550
6	1P-20	3#12, 1/2"C	FAÇADE LTG	560							560	700
8	1P-20		SPARE							1000	1000	1000
10	1P-20		SPARE							1000	1000	1000
12	1P-20		SPARE							1000	1000	1000
14											0	0
16											0	0
18											0	0
20											0	0
22											0	0
24											0	0
26											0	0
28											0	0
30											0	0
32											0	0
34											0	0
36											0	0
38											0	0
40											0	0
42											0	0

**SUM OF COMPRESSOR LOADS PLUS 25% OF THE LARGEST COMPRESSOR *FIRST 10KVA RECEPS LOAD AT 100%, REMAINDER AT 50%	CONN. SUBTOTALS:	4750	0	0	0	0	0	0	6000
	DEMAND:	125%	100%	100%	100%	100%	100%	100%	
	CAL'C SUBTOTALS:	5938	0	0	0	0	0	6000	
TOTAL CONN:		10,750 VA			TOTAL CAL'C:		11,938 VA		
		30 AMPS					33 AMPS		

PUTNAM COUNTY GOVERNMENT COMPLEX

NTS

COBURN AND ASSOCIATES, INC
 P.O. BOX 577 HIGH SPRINGS, FLORIDA 32655-0577
 (386) 454-3748 FAX (386) 454-2652

SK-E8.4-1
 5-14-07