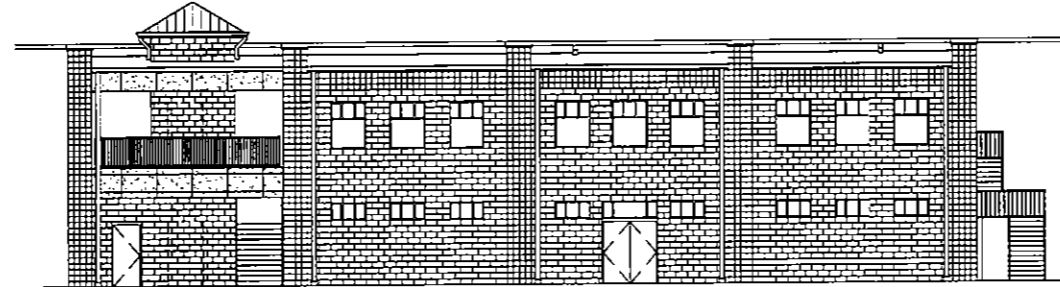


# FIELD HOUSE POPE HIGH SCHOOL



3001 HEMBREE ROAD  
COBB COUNTY, GEORGIA

PROJECT TEAM	PROJECT INFORMATION	VICINITY MAP	DRAWINGS
<p><b>OWNER</b> Pope High School Cobb County School District 514 Clover Street Marietta, GA. 30081 Larry Wall TEL: 770-590-4519</p> <p><b>ARCHITECTURAL</b> Tuck, Stinard and Associates 1300 Shiloh Road Kennesaw, GA. 30144 Scott Stinard, AIA TEL: 770-426-7400 FAX: 770-425-7444</p> <p><b>STRUCTURAL</b> Weems/Doar Engineers, Inc 3104 Mercer University Drive Suite 100 Atlanta, GA 30341 Jack Weems P.E. TEL: 770-457-0985 FAX: 770-457-8639</p> <p><b>MECHANICAL, ELECTRICAL AND PLUMBING</b> Mullinax Solutions, Inc 215 South Erwin Street Cartersville, GA 30102 Chris Mullinax P.E. TEL: 770-387-1334 FAX: 770-387-1363</p> <p><b>CONTRACTOR</b> JWWilliams Contractors 33 Maness Court, Suite 100 Roswell, GA. 30076 Jeff Williams TEL: 678-287-0000 FAX: 678-287-0010</p>	<p><b>PROJECT CRITERIA:</b> This review is based on the following information:</p> <p><b>LOCATION OF DEVELOPMENT:</b> Field House Pope High School 30001 Hembree road Cobb County, Georgia</p> <p><b>ARCHITECT:</b> Scott D. Stinard, AIA <b>GEORGIA STATE REGISTRATION NUMBER:</b> 9172 <b>STRUCTURAL ENGINEER:</b> Thad Gilliam P.E. <b>GEORGIA STATE REGISTRATION NUMBER:</b> 18888</p> <p><b>Occupancy Classification:</b> Educational <b>Type of Construction:</b> I.B.C. Type IIB <b>Number of Buildings:</b> One <b>Number of Stories:</b> Two <b>Sprinklered:</b> Yes    <b>Protected:</b> No</p> <p><b>Total Building Area - 9,396 SF</b> <b>First Floor Area - 4,698 SF</b> <b>Second Floor Area - 4,698 SF</b></p> <p><b>Occupancy load per IBC 1003.2.2- Total 141</b> <b>1st floor- 4,698 sf/Lockers 50 gross= 94</b> <b>2nd floor- 4,698 sf/office 100 net= 47</b></p> <p><b>Indicate total amount of each in this project:</b> <b>Elevators :</b> 1-Phase II <b>Escalators:</b> 0, <b>Man Lifts:</b> 0 <b>Dumbwaiters:</b> 0, <b>Wheelchair Lifts:</b> 0</p>	<p><b>LOCATION MAP</b></p> <p><b>CODE INFORMATION</b></p> <p>The Building described in these plans shall be constructed in compliance with the following codes:</p> <ul style="list-style-type: none"> <li>2006 International Building Code</li> <li>2008 Electrical Code</li> <li>2008 Mechanical Code</li> <li>2008 Plumbing Code</li> <li>2005 International Fire Code</li> <li>NFPA 101 Life Safety Code 2000 Edition</li> <li>Georgia Accessibility Code</li> </ul> <p><b>FIRE DEPT. INSPECTIONS</b></p> <p>Contact the Cobb County Fire Marshal's for inspections at 50%, 80% and 100% completion. Note: (50%) Inspection of the floor/ceiling penetrations, (80%) inspection of any fire rated barriers, floor and ceiling, (100%) Final inspection: all systems, equipment installed and operating, ready for occupancy. The inspection request must be phoned in before 2:00 p.m. the day prior to the date the inspection is needed.</p> <p><b>FIRE EXTINGUISHERS</b></p> <p>Fire Extinguishers in Storage occupancies and Office areas shall be located per the requirements of NFPA 10. The size shall be a minimum of 2A 10BC, 1 is required and shall be installed at a maximum of 48" above the finished floor to the top of the handle.</p>	<p><b>ARCHITECTURAL</b></p> <ul style="list-style-type: none"> <li>A0.1 COVER SHEET</li> <li>A1.1 FIRST FLOOR PLAN AND REFLECTED CEILING PLAN</li> <li>A1.2 SECOND FLOOR PLAN AND REFLECTED CEILING PLAN</li> <li>A3.1 ENLARGED TOILET PLANS</li> <li>A4.1 ELEVATIONS AND ROOF PLAN</li> <li>A5.1 WALL SECTIONS</li> <li>A5.2 WALL SECTIONS</li> <li>A6.1 STAIR DETAILS</li> </ul> <p><b>STRUCTURAL</b></p> <ul style="list-style-type: none"> <li>S1.0 FOUNDATION PLAN</li> <li>S2.0 SECOND FRAMING PLAN</li> <li>S3.0 ROOF FRAMING PLAN</li> <li>S4.0 SECTIONS AND DETAILS</li> </ul> <p><b>MECHANICAL, ELECTRICAL, &amp; PLUMBING</b></p> <ul style="list-style-type: none"> <li>M1.1 FIRST FLOOR PLAN-MECHANICAL</li> <li>M1.2 SECOND FLOOR PLAN-MECHANICAL</li> <li>P1.1 FIRST FLOOR PLAN-PLUMBING</li> <li>P1.2 SECOND FLOOR PLAN-PLUMBING</li> <li>E1.1L FIRST FLOOR PLAN-LIGHTING</li> <li>E1.1P FIRST FLOOR PLAN-POWER</li> <li>E1.1S FIRST FLOOR PLAN-SYSTEM</li> <li>E1.2L SECOND FLOOR PLAN-LIGHTING</li> <li>E1.2P SECOND FLOOR PLAN-POWER</li> <li>E1.2S SECOND FLOOR PLAN-SYSTEM</li> </ul>
<p><b>SIGNS</b> Signs are not approved within the scope of this building permit. A separate sign location permit is required for each sign.</p>			<p><b>ISSUED SCHEDULE</b></p> <p>5-31-07 ISSUED FOR PERMIT</p>

THESE DRAWINGS ARE THE PROPERTY OF T.S.2.A. INC. AND SHALL NOT BE REPRODUCED WITHOUT THE ARCHITECT'S WRITTEN PERMISSION. THESE DRAWINGS ARE FOR USE ON THIS SPECIFIC SITE IN CONNECTION WITH THE ISSUANCE DATE AND ARE NOT SUITABLE FOR USE ON A DIFFERENT SITE OR AT A LATER TIME. ALL DIMENSIONS MUST BE VERIFIED BY THE CONTRACTOR. ANY DISCREPANCIES NOTIFIED OF ANY DISCREPANCIES BEFORE PROCEEDING WITH CONSTRUCTION. DO NOT SCALE DRAWINGS.

**Field House**  
Pope High School  
3001 Hembree Road  
Cobb County, Georgia

**T.S.2.A.**  
TUCK, STINARD & ASSOCIATES  
ARCHITECTS, INC.  
1300 SHILOH ROAD KENNESAW, GEORGIA 30144  
(770) 425-7400 FAX (770) 425-7444

<b>REVISIONS</b>

<b>PROJECT NUMBER</b>	07011.00
<b>DATE</b>	5-31-07

**SHEET NUMBER**

# A0.1

to order plans, go to [www.lidirepro.com](http://www.lidirepro.com)