

LOT #6C

3766 PEACHTREE CREST DRIVE  
DULUTH, GEORGIA 30097  
GWINNETT COUNTY

PEACHTREE  
CREST  
BUSINESS  
CENTER

DESIGN APPROVAL:

DATE:

REVISIONS	
4	4-13-07
3	4-12-07
2	4-11-07
1	4-10-07

ALAN T. CROWLEY, AIA, INC.

5275 TRIANGLE PARKWAY  
SUITE 300  
NORCROSS, GEORGIA 30092  
(770) 442-1001

CONTRACT NO. 27033  
DRAWN BY: ATC

FLOOR PLAN

- REVIEW ONLY
- PRICING ONLY
- CONSTRUCTION

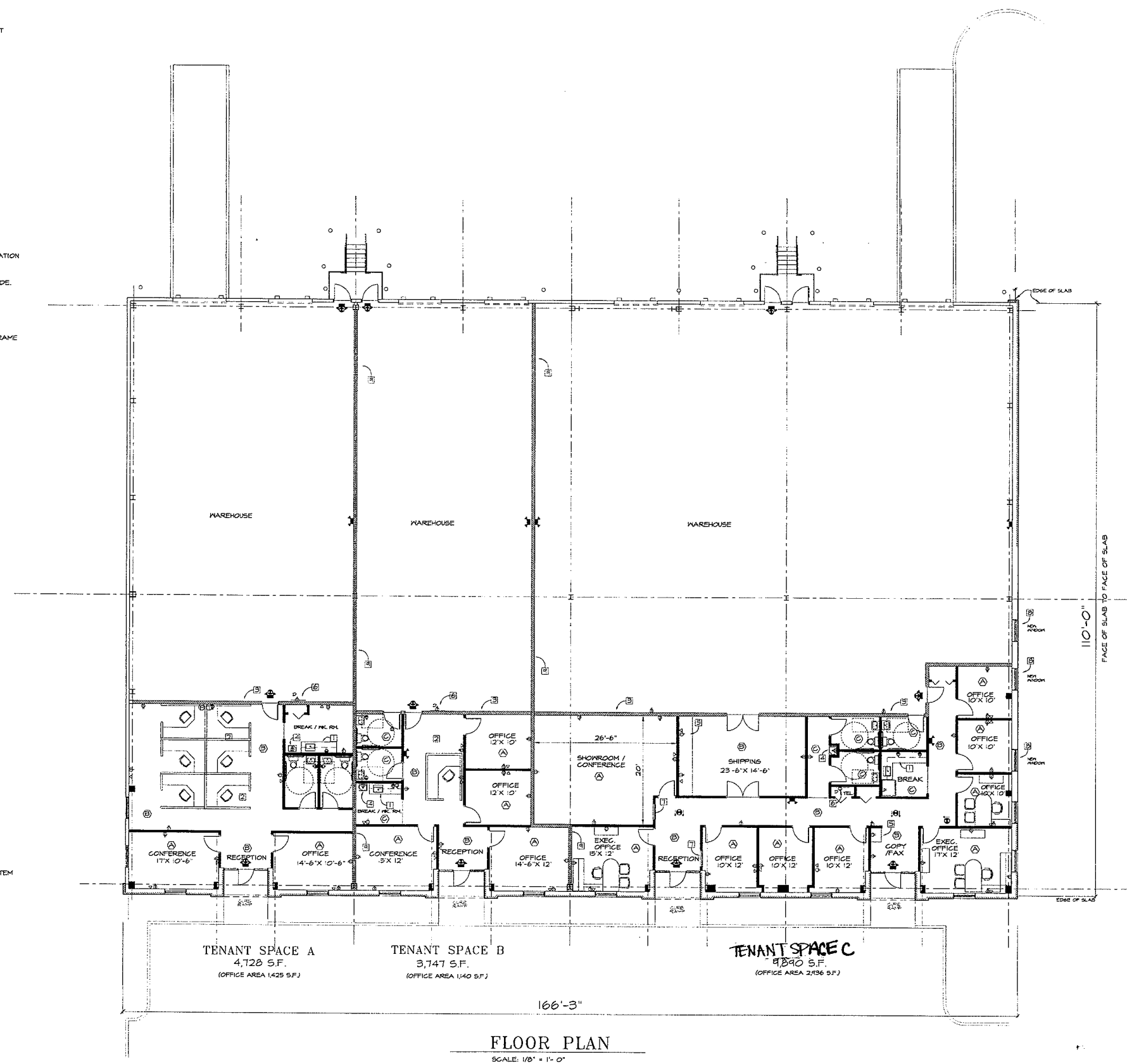
APRIL 9, 2007

- KEYED NOTES:
1. PLASTIC LAMINATE BASE AND WALL CABINET WITH STAINLESS STEEL HANDICAP ACCESSIBLE SINK.
  2. FURNITURE - N.I.C.
  3. PARTITION: ONE LAYER 1/2" GYP. BD. EACH SIDE 6" METAL STUDS WITH R-13 INSULATION TO CONTINUE TO ROOF DECK ON WAREHOUSE SIDE. GYP. BD. TO EXTEND TO 10' A.F.F. ON OFFICE SIDE.
  4. ADA ACCESSIBLE ELEC. WATER COOLER WITH GLASS-FILL SPOUT.
  5. 24" DEEP PLASTIC LAMINATE WORK COUNTER AT 36" A.F.F.
  6. PAINTED TELEPHONE BACKBOARD WITH A DEDICATED ELEC. OUTLET AND CONDUIT WITH PULL STRING FOR SERVICE ACCESS.
  7. 3" WIDE TEMPERED GLASS SIDE LIGHT IN GYP. BD. OPENINGS WITH CONTINUOUS ALUM. STOP BOTH SIDES. WINDOW HEAD TO ALIGN WITH ADJACENT DOOR HEAD.
  8. 4' X 4' INSULATED EXTERIOR WINDOW TO MATCH BUILDING STANDARD
  9. ONE HOUR FIRE RATED GYP. BD. WALL TO ROOF DECK WITH SOUND INSULATION. PRICE AS AN ALTERNATE FOR WALL TO BE ONE HOUR RATED CONCRETE BLOCK WITH FURRING AND GYP. BD. IN THE OFFICE AREA.

- GENERAL NOTES:
1. PROVIDE 1/2" GYP. BD. ON EXPOSED EXTERIOR STUDS AROUND OFFICE AREA (FURR-OUT AS NECESSARY).
  2. PROVIDE 2' X 2' SUSPENDED CEILING THROUGH OUT OFFICE AREA AT 9'-0" A.F.F. WITH EXPOSED EDGE ACOUSTICAL TILE.
  3. PARTITIONS AROUND TOILETS AND EXEC. OFFICES SHALL HAVE ACOUSTICAL INSULATION IN WALL CAVITY AND ACOUSTICAL NON-FACED BATT INSUL. ABOVE SUSP. GLS.
  4. PRICE AS AN ALTERNATE TO PROVIDE A SPRINKLER SYSTEM THROUGHOUT PER CODE.
  5. NEW INTERIOR DOORS TO BE STAIN GRADE SOLID CORE 3' X 7' WOOD DOORS IN PAINTED HOLLOW METAL FRAME.
  6. PROVIDE METAL HALIDE LIGHTING IN WAREHOUSE AREA.
  7. TYP. INTERIOR DOORS SHALL BE STAIN GRADE SOLID CORE WOOD IN HGL. MET. FRAME

- FINISH NOTES:
1. PROVIDE NEW FINISHES THROUGHOUT OFFICE AREA.
  2. CARPET SHALL BE 20 OZ. NYLON LOOP - BLUE DOWN
  3. GYP. BD. WALLS IN THE WAREHOUSE SHALL HAVE PAINT FINISH.
  4. CONCRETE FLOOR IN THE WAREHOUSE SHALL BE SEALED.
  5. FINISH TYPES:
    - (A) CARPET, 4" PAINTED WOOD BASE, SINGLE PIECE PAINTED CHAIR RAIL, AND PAINT FINISH ON WALLS.
    - (B) CARPET, 4" RUBBER BASE AND PAINT FINISH ON WALLS
    - (C) 12" X 12" X 1/8" VCT, 4" RUBBER BASE AND PAINT FINISH ON WALLS

- FLOOR PLAN LEGEND:
- EXISTING WALLS TO REMAIN
  - NEW PARTITION
  - NEW PARTITION TO ROOF STRUCTURE
  - ⊕ 110V. QUADRUPEX ELECTRICAL OUTLET
  - ⊙ FLUSH MOUNTED FLOOR ELEC. AND VOICE / DATA OUTLET
  - ∨ TELEPHONE OR DATA OUTLET
  - 110V. ELEC. OUTLET
  - △ 110V. ELEC. OUTLET TO BE MOUNTED ABOVE COUNTER
  - ▽ TELEPHONE OR DATA MOUNTED AT DESIGNATED HEIGHT A.F.F. OR ABOVE COUNTER
  - ⊠ FIRE EXTINGUISHER LOCATION
  - ⊞ 110V. ELEC. OUTLET ON DEDICATED 20 AMP CIRCUIT BREAKER
  - ⊕ WALL MOUNTED JUNCTION BOX FOR VOICE / DATA TO TENANT FURNITURE SYSTEM - WITH "STUBBED UP" CONDUIT AND PULL STRING
  - ⊕ WALL MOUNTED 110V. POWER JUNCTION BOX FOR TENANT FURNITURE SYSTEM



FLOOR PLAN  
SCALE: 1/8" = 1'-0"