

1 ROOF FRAMING PLAN
S-112
3/32"x1'-0"

- PLAN NOTES:
1. JOIST BEARING ELEVATION VARIES. SEE PLAN.
 2. ROOF DECK: 1 1/2" - 22 GAUGE TYPE B.
 3. ROOF DECK ATTACHMENT TO JOIST: USE 5/8" DIA. WELDS AND NO TOP SIDE LAP SCREWS. USE 3/7" WELD PATTERN AND 3 SIDE LAP CONNECTORS PER SPAN.
 4. PROVIDE JOIST BRIDGING PER STEEL JOIST INSTITUTE RECOMMENDATIONS. (SJI)

To order plans, go to www.ldirepro.com

KGA 06-470 Food Lion

ai DESIGN GROUP
ARCHITECTURE / INTERIORS
600 South College Street Phone: (704) 731-8080
Suite 200 Fax: (704) 731-8080
Charlotte, NC 28202 www.aidginc.com

KingGuinn Associates
STRUCTURAL ENGINEERS
1309 Ambler Drive
Charlotte, North Carolina 28206
(704) 597-3340 Fax (704) 597-1365



OKATIE RETAIL INVESTORS LLC
OKATIE CENTER PHASE ONE
FOOD LION

05/14/07	ISSUED FOR GC BIDDING	
05/15/07	SHEET NUMBER REVISIONS	
04/27/07	ISSUED FOR FOOD LION REVIEW	
Rev	Date	Description
Project No.: 06302A-FL		
Drawn by: DOP		
Checked by: TBG		

Roof Framing Plan
BUILDING 3

S-112

P:\1170 Okatie Center\Book\LDI\061112.dwg

COLUMN FOOTING SCHEDULE				
MARK	SIZE	DEPTH	REINFORCING (EACH WAY BOTTOM)	SERVICE LOAD CAP
F-2.5	2'-6"X2'-6"	12"	4#4	18.8K
F-3.0	3'-0"X3'-0"	12"	4#4	27K
F-3.5	3'-6"X3'-6"	12"	5#4	36.8K
F-4.0	4'-0"X4'-0"	12"	5#4	48K
F-4.5	4'-6"X4'-6"	12"	5#4	60.8K
F-5.0	5'-0"X5'-0"	12"	8#4	75K
F-5.5	5'-6"X5'-6"	12"	8#5	90.8K
F-6.0	6'-0"X6'-0"	14"	8#5	108K
F-6.5	6'-6"X6'-6"	15"	9#5	126.8K
F-7.0	7'-0"X7'-0"	16"	11#5	147K
F-7.5	7'-6"X7'-6"	17"	9#6	168.8K
F-8.0	8'-0"X8'-0"	18"	7#7	192K

1 COLUMN FOOTING SCHEDULE
NO SCALE 3000 PSF BEARING

2 TYPICAL COLUMN FOOTING
NO SCALE

COLUMN SIZE	BASE PLATE SIZE	ANCHOR BOLTS	EMBEDMENT
HSS4X4X1/4	3/4"X12"X12"	4-3/4" DIA.	9"
HSS5X5X1/4	3/4"X12"X12"	4-3/4" DIA.	9"
HSS6X6X1/4	3/4"X14"X14"	4-3/4" DIA.	9"
HSS6X6X5/16	3/4"X14"X14"	4-3/4" DIA.	9"
HSS8X8X1/4	3/4"X16"X16"	4-3/4" DIA.	9"

3 TYPICAL S.O.G. JOINTS
NO SCALE

4 TYP. DEPRESSED SLAB DETAIL
NO SCALE

5 BASE PLATE SCHEDULE
NO SCALE

6 TYPICAL HORIZ. BRIDGING
NO SCALE

7 TYPICAL CROSS BRIDGING
NO SCALE

8 TYPICAL ROOF DECK WELD PATTERNS
NO SCALE

10 GENERAL NOTES
NO SCALE

11 GENERAL NOTES
NO SCALE

12 GENERAL NOTES
NO SCALE

13 GENERAL NOTES
NO SCALE

14 GENERAL NOTES
NO SCALE

15 GENERAL NOTES
NO SCALE

16 GENERAL NOTES
NO SCALE

17 GENERAL NOTES
NO SCALE

18 GENERAL NOTES
NO SCALE

19 GENERAL NOTES
NO SCALE

20 GENERAL NOTES
NO SCALE

21 GENERAL NOTES
NO SCALE

22 GENERAL NOTES
NO SCALE

23 GENERAL NOTES
NO SCALE

24 GENERAL NOTES
NO SCALE

25 GENERAL NOTES
NO SCALE

26 GENERAL NOTES
NO SCALE

27 GENERAL NOTES
NO SCALE

28 GENERAL NOTES
NO SCALE

29 GENERAL NOTES
NO SCALE

30 GENERAL NOTES
NO SCALE

31 GENERAL NOTES
NO SCALE

32 GENERAL NOTES
NO SCALE

33 GENERAL NOTES
NO SCALE

34 GENERAL NOTES
NO SCALE

35 GENERAL NOTES
NO SCALE

36 GENERAL NOTES
NO SCALE

37 GENERAL NOTES
NO SCALE

38 GENERAL NOTES
NO SCALE

39 GENERAL NOTES
NO SCALE

40 GENERAL NOTES
NO SCALE

41 GENERAL NOTES
NO SCALE

42 GENERAL NOTES
NO SCALE

43 GENERAL NOTES
NO SCALE

44 GENERAL NOTES
NO SCALE

45 GENERAL NOTES
NO SCALE

46 GENERAL NOTES
NO SCALE

47 GENERAL NOTES
NO SCALE

48 GENERAL NOTES
NO SCALE

49 GENERAL NOTES
NO SCALE

50 GENERAL NOTES
NO SCALE

51 GENERAL NOTES
NO SCALE

52 GENERAL NOTES
NO SCALE

53 GENERAL NOTES
NO SCALE

54 GENERAL NOTES
NO SCALE

55 GENERAL NOTES
NO SCALE

56 GENERAL NOTES
NO SCALE

57 GENERAL NOTES
NO SCALE

58 GENERAL NOTES
NO SCALE

59 GENERAL NOTES
NO SCALE

60 GENERAL NOTES
NO SCALE

61 GENERAL NOTES
NO SCALE

62 GENERAL NOTES
NO SCALE

63 GENERAL NOTES
NO SCALE

64 GENERAL NOTES
NO SCALE

65 GENERAL NOTES
NO SCALE

66 GENERAL NOTES
NO SCALE

67 GENERAL NOTES
NO SCALE

68 GENERAL NOTES
NO SCALE

69 GENERAL NOTES
NO SCALE

70 GENERAL NOTES
NO SCALE

71 GENERAL NOTES
NO SCALE

72 GENERAL NOTES
NO SCALE

73 GENERAL NOTES
NO SCALE

74 GENERAL NOTES
NO SCALE

75 GENERAL NOTES
NO SCALE

76 GENERAL NOTES
NO SCALE

77 GENERAL NOTES
NO SCALE

78 GENERAL NOTES
NO SCALE

79 GENERAL NOTES
NO SCALE

80 GENERAL NOTES
NO SCALE

81 GENERAL NOTES
NO SCALE

82 GENERAL NOTES
NO SCALE

83 GENERAL NOTES
NO SCALE

84 GENERAL NOTES
NO SCALE

85 GENERAL NOTES
NO SCALE

86 GENERAL NOTES
NO SCALE

87 GENERAL NOTES
NO SCALE

88 GENERAL NOTES
NO SCALE

89 GENERAL NOTES
NO SCALE

90 GENERAL NOTES
NO SCALE

91 GENERAL NOTES
NO SCALE

92 GENERAL NOTES
NO SCALE

93 GENERAL NOTES
NO SCALE

94 GENERAL NOTES
NO SCALE

95 GENERAL NOTES
NO SCALE

96 GENERAL NOTES
NO SCALE

97 GENERAL NOTES
NO SCALE

98 GENERAL NOTES
NO SCALE

99 GENERAL NOTES
NO SCALE

100 GENERAL NOTES
NO SCALE

101 GENERAL NOTES
NO SCALE

102 GENERAL NOTES
NO SCALE

103 GENERAL NOTES
NO SCALE

104 GENERAL NOTES
NO SCALE

105 GENERAL NOTES
NO SCALE

106 GENERAL NOTES
NO SCALE

107 GENERAL NOTES
NO SCALE

108 GENERAL NOTES
NO SCALE

109 GENERAL NOTES
NO SCALE

110 GENERAL NOTES
NO SCALE

111 GENERAL NOTES
NO SCALE

112 GENERAL NOTES
NO SCALE

113 GENERAL NOTES
NO SCALE

114 GENERAL NOTES
NO SCALE

115 GENERAL NOTES
NO SCALE

116 GENERAL NOTES
NO SCALE

117 GENERAL NOTES
NO SCALE

118 GENERAL NOTES
NO SCALE

119 GENERAL NOTES
NO SCALE

120 GENERAL NOTES
NO SCALE

121 GENERAL NOTES
NO SCALE

122 GENERAL NOTES
NO SCALE

123 GENERAL NOTES
NO SCALE

124 GENERAL NOTES
NO SCALE

125 GENERAL NOTES
NO SCALE

126 GENERAL NOTES
NO SCALE

127 GENERAL NOTES
NO SCALE

128 GENERAL NOTES
NO SCALE

129 GENERAL NOTES
NO SCALE

130 GENERAL NOTES
NO SCALE

131 GENERAL NOTES
NO SCALE

132 GENERAL NOTES
NO SCALE

133 GENERAL NOTES
NO SCALE

134 GENERAL NOTES
NO SCALE

135 GENERAL NOTES
NO SCALE

136 GENERAL NOTES
NO SCALE

137 GENERAL NOTES
NO SCALE

138 GENERAL NOTES
NO SCALE

139 GENERAL NOTES
NO SCALE

140 GENERAL NOTES
NO SCALE

141 GENERAL NOTES
NO SCALE

142 GENERAL NOTES
NO SCALE

143 GENERAL NOTES
NO SCALE

144 GENERAL NOTES
NO SCALE

145 GENERAL NOTES
NO SCALE

146 GENERAL NOTES
NO SCALE

147 GENERAL NOTES
NO SCALE

148 GENERAL NOTES
NO SCALE

149 GENERAL NOTES
NO SCALE

150 GENERAL NOTES
NO SCALE

151 GENERAL NOTES
NO SCALE

152 GENERAL NOTES
NO SCALE

153 GENERAL NOTES
NO SCALE

154 GENERAL NOTES
NO SCALE

155 GENERAL NOTES
NO SCALE

156 GENERAL NOTES
NO SCALE

157 GENERAL NOTES
NO SCALE

158 GENERAL NOTES
NO SCALE

159 GENERAL NOTES
NO SCALE

160 GENERAL NOTES
NO SCALE

161 GENERAL NOTES
NO SCALE

162 GENERAL NOTES
NO SCALE

163 GENERAL NOTES
NO SCALE

164 GENERAL NOTES
NO SCALE

165 GENERAL NOTES
NO SCALE

166 GENERAL NOTES
NO SCALE

167 GENERAL NOTES
NO SCALE

168 GENERAL NOTES
NO SCALE

169 GENERAL NOTES
NO SCALE

170 GENERAL NOTES
NO SCALE

171 GENERAL NOTES
NO SCALE

172 GENERAL NOTES
NO SCALE

173 GENERAL NOTES
NO SCALE

174 GENERAL NOTES
NO SCALE

175 GENERAL NOTES
NO SCALE

176 GENERAL NOTES
NO SCALE

177 GENERAL NOTES
NO SCALE

178 GENERAL NOTES
NO SCALE

179 GENERAL NOTES
NO SCALE

180 GENERAL NOTES
NO SCALE

181 GENERAL NOTES
NO SCALE

182 GENERAL NOTES
NO SCALE

183 GENERAL NOTES
NO SCALE

184 GENERAL NOTES
NO SCALE

185 GENERAL NOTES
NO SCALE

186 GENERAL NOTES
NO SCALE

187 GENERAL NOTES
NO SCALE

188 GENERAL NOTES
NO SCALE

189 GENERAL NOTES
NO SCALE

190 GENERAL NOTES
NO SCALE

191 GENERAL NOTES
NO SCALE

192 GENERAL NOTES
NO SCALE

193 GENERAL NOTES
NO SCALE

194 GENERAL NOTES
NO SCALE

195 GENERAL NOTES
NO SCALE

196 GENERAL NOTES
NO SCALE

197 GENERAL NOTES
NO SCALE

198 GENERAL NOTES
NO SCALE

199 GENERAL NOTES
NO SCALE

200 GENERAL NOTES
NO SCALE

ai DESIGN GROUP
ARCHITECTURE / INTERIORS
500 South College Street, Suite 200, Charlotte, NC 28202
Phone: (704) 731-8080, Fax: (704) 731-8090, www.aidginc.com

KingGuinn Associates
STRUCTURAL ENGINEERS
1309 Ambler Drive, Charlotte, North Carolina 28203
(704) 597-1340 Fax (704) 597-1365

OKATIE RETAIL INVESTORS LLC
OKATIE CENTER PHASE ONE
FOOD LION

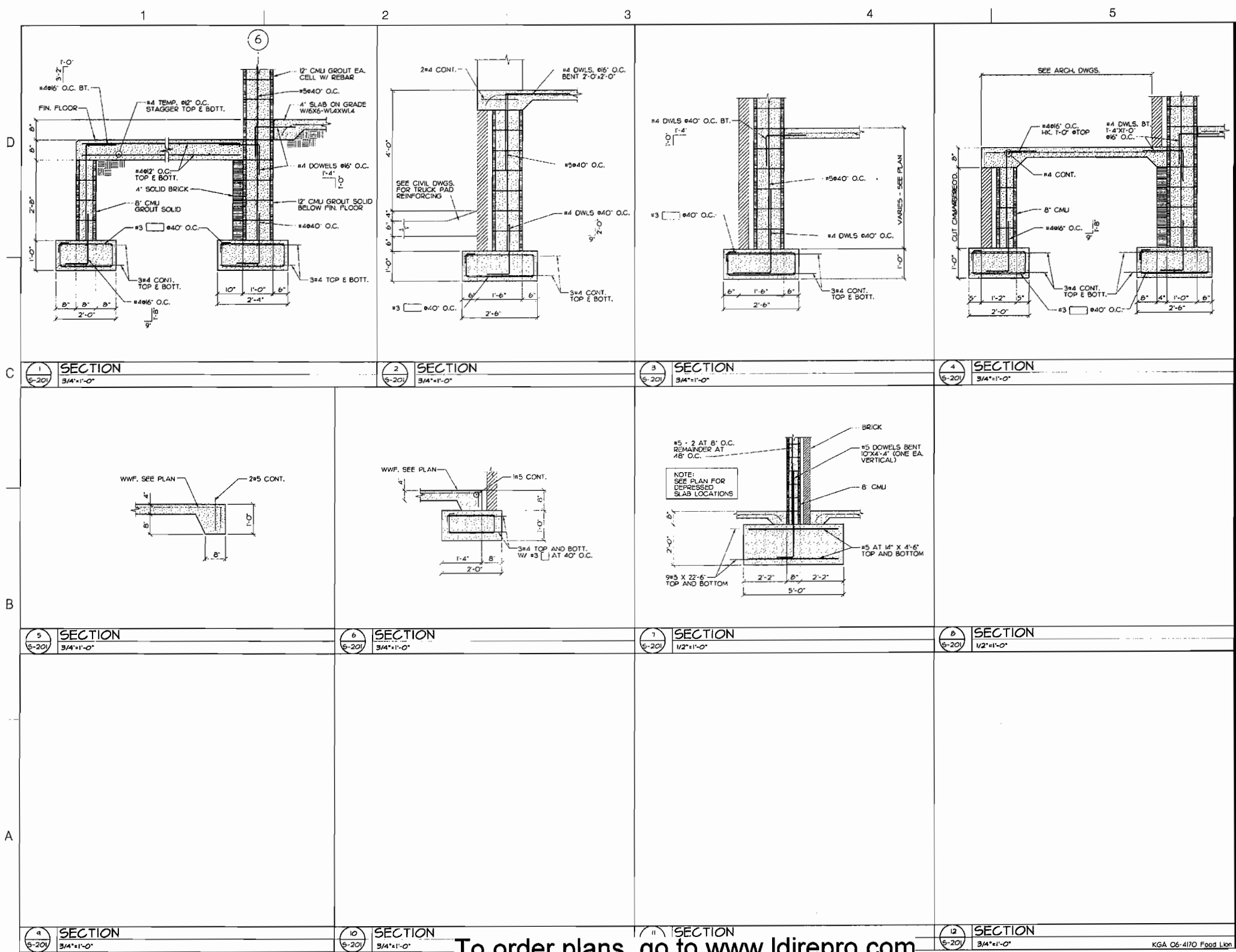
13/14/07 ISSUED FOR GC BIDDING
05/18/07 SHEET NUMBER REVISIONS
04/27/07 ISSUED FOR FOOD LION REVIEW

Project No.: 08302A-FL
Drawn by: DCF
Checked by: TBC

General Notes, Typical Sections and Details
BUILDING 3
S-200

KGA 06-410 Food Lion

To order plans, go to www.ldirepro.com



ai DESIGN GROUP
ARCHITECTURE / INTERIORS
500 South College Street Phone (704) 731-8080
Suite 200 Fax (704) 731-8080
Charlotte, NC 28202
www.aigdn.com

KingGuinn Associates
STRUCTURAL ENGINEERS
1900 Arble Cr.
Charlotte, North Carolina 28206
(704) 597-1340 Fax (704) 597-1365



OKATIE RETAIL INVESTORS LLC
OKATIE CENTER PHASE ONE
FOOD LION

Rev	Date	Description
051407		ISSUED FOR GC BIDDING
051807		SHEET NUMBER REVISIONS
042707		ISSUED FOR FOOD LION REVIEW

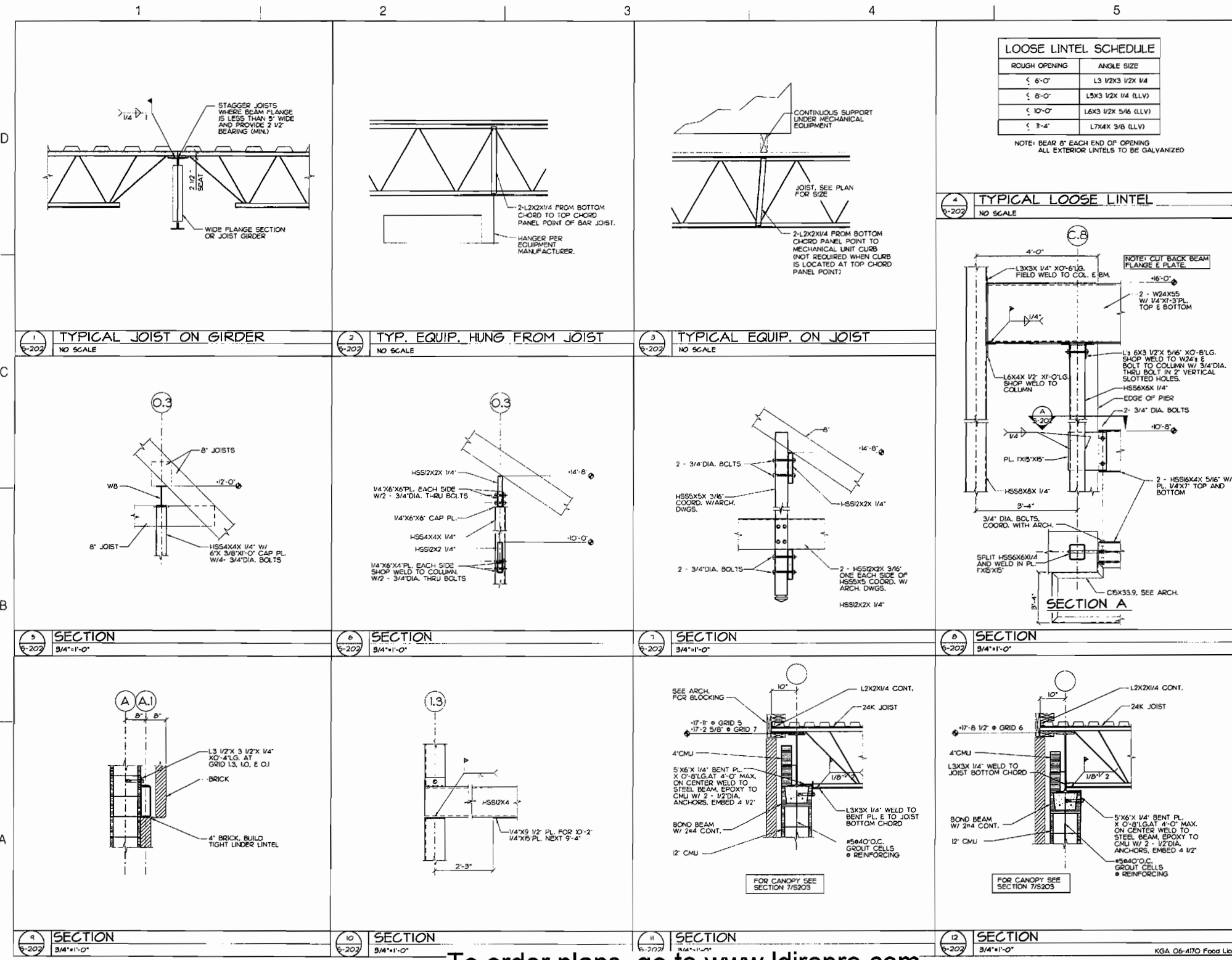
Project No.: 05302A-FL
Drawn by: DCF
Checked by: TBG

Sections and Details
BUILDING 3

S-201

To order plans, go to www.ldirepro.com

KGA 06-4170 Food Lion



ai DESIGN GROUP
ARCHITECTURE / INTERIORS
500 South College Street Phone (704) 731-8080
Suite 200 Fax (704) 731-8080
Charlotte, NC 28202 www.aigdesign.com

KingGuinn Associates
STRUCTURAL ENGINEERS
309 Ambale Drive
Charlotte, North Carolina 28205
(704) 597-1342 Fax (704) 597-1385

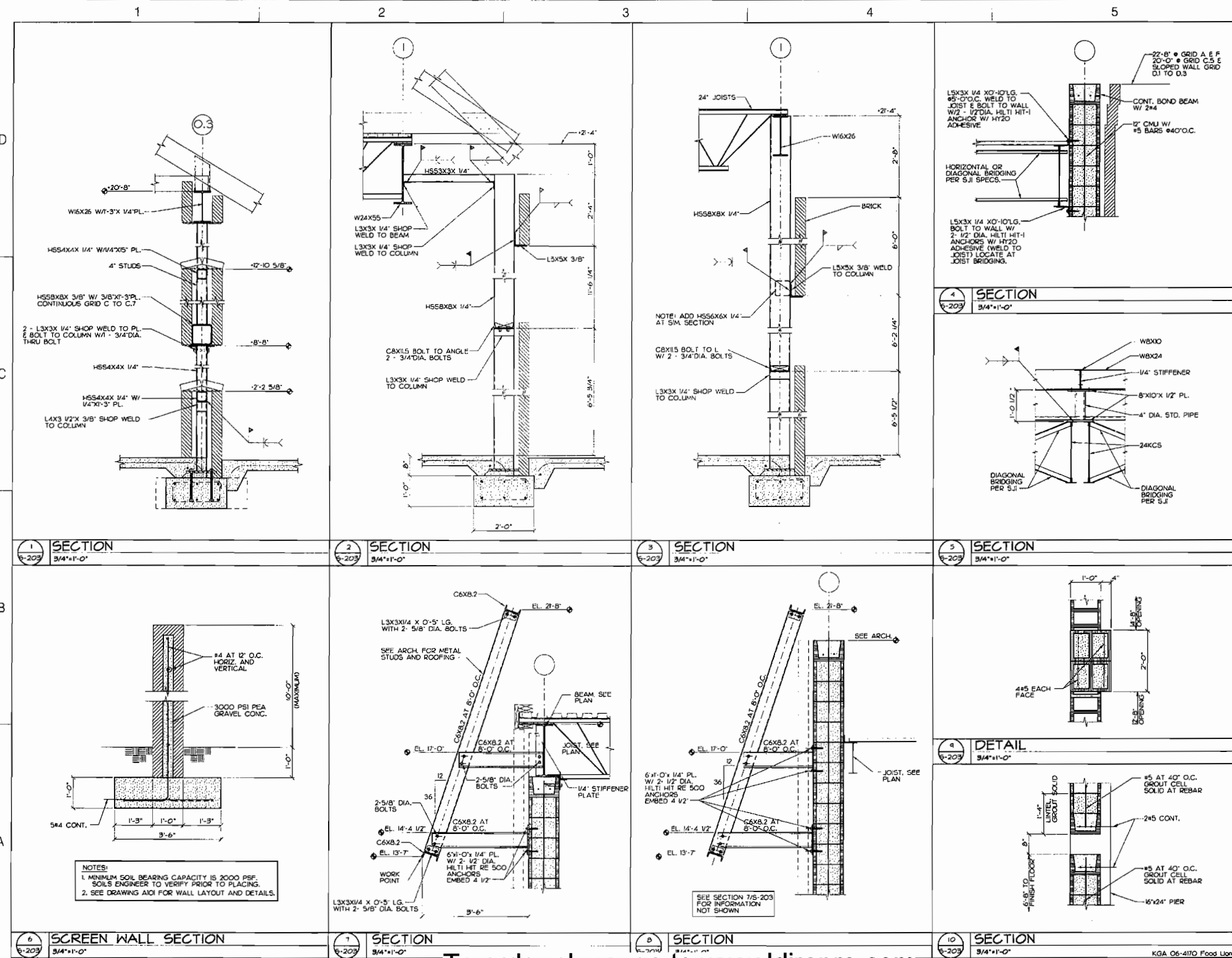
PRELIMINARY NOT FOR CONSTRUCTION

OKATIE RETAIL INVESTORS LLC
OKATIE CENTER PHASE ONE
FOOD LION

08/14/07 ISSUED FOR GC BIDDING
05/18/07 SHEET NUMBER REVISIONS
04/27/07 ISSUED FOR FOOD LION REVIEW

Typical Sections and Details
BUILDING 3

S-202



1 SECTION 3/4"x1'-0" 2 SECTION 3/4"x1'-0" 3 SECTION 3/4"x1'-0" 4 SECTION 3/4"x1'-0" 5 SECTION 3/4"x1'-0" 6 SCREEN WALL SECTION 3/4"x1'-0" 7 SECTION 3/4"x1'-0" 8 SECTION 3/4"x1'-0" 9 DETAIL 3/4"x1'-0" 10 SECTION 3/4"x1'-0"

ai DESIGN GROUP
ARCHITECTURE / INTERIORS
500 South College Street Phone (704) 731-8080
Suite 200 Fax (704) 731-8090
Charlotte, NC 28202 www.aigdgc.com

KingGuinn Associates
STRUCTURAL ENGINEERS
1339 Ambrose Drive
Charlotte, North Carolina 28209
(704) 587-1342 Fax (704) 587-1385



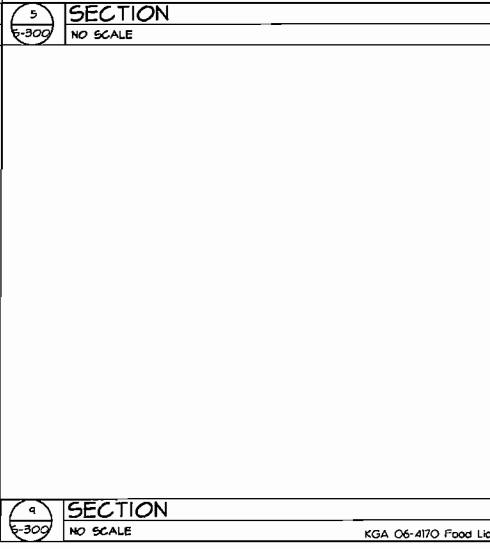
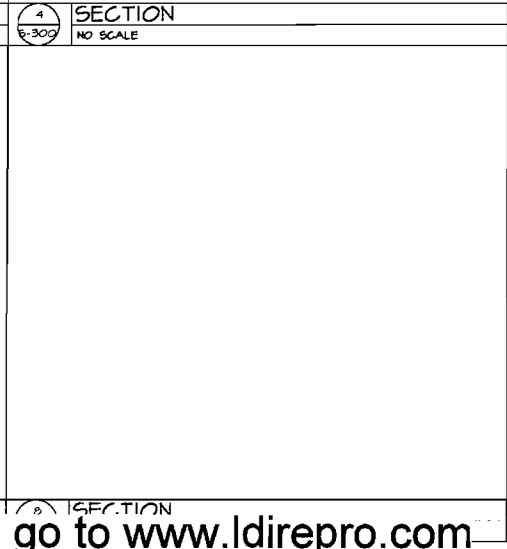
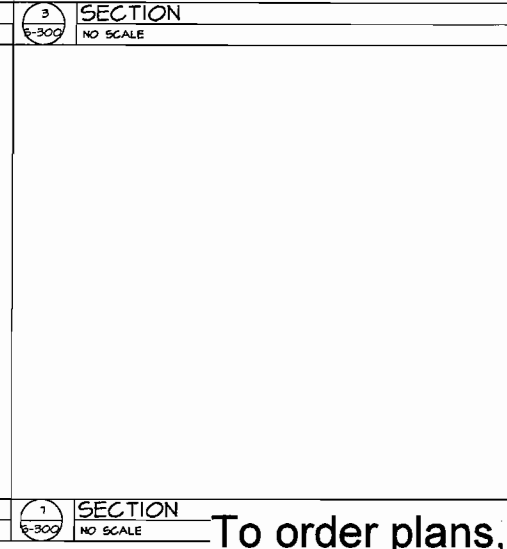
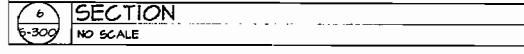
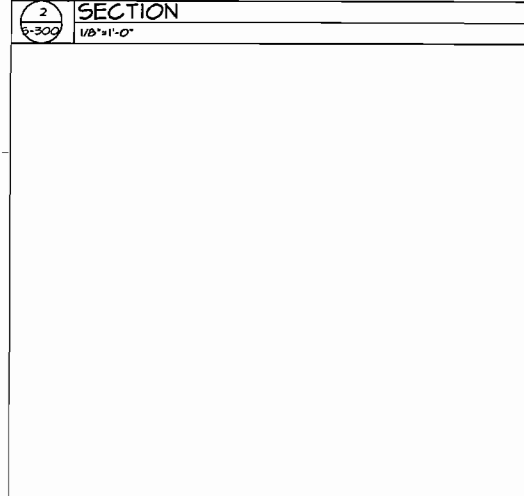
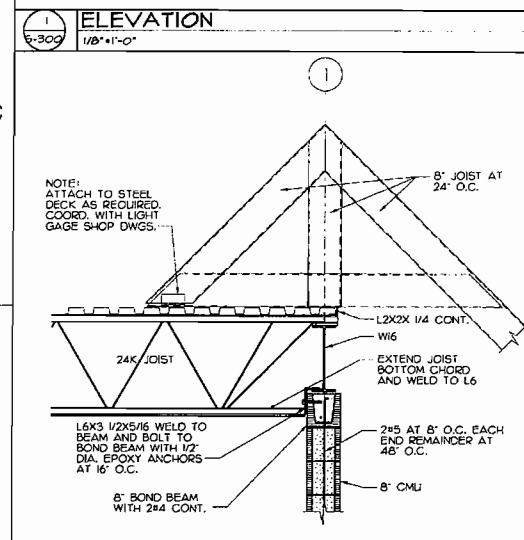
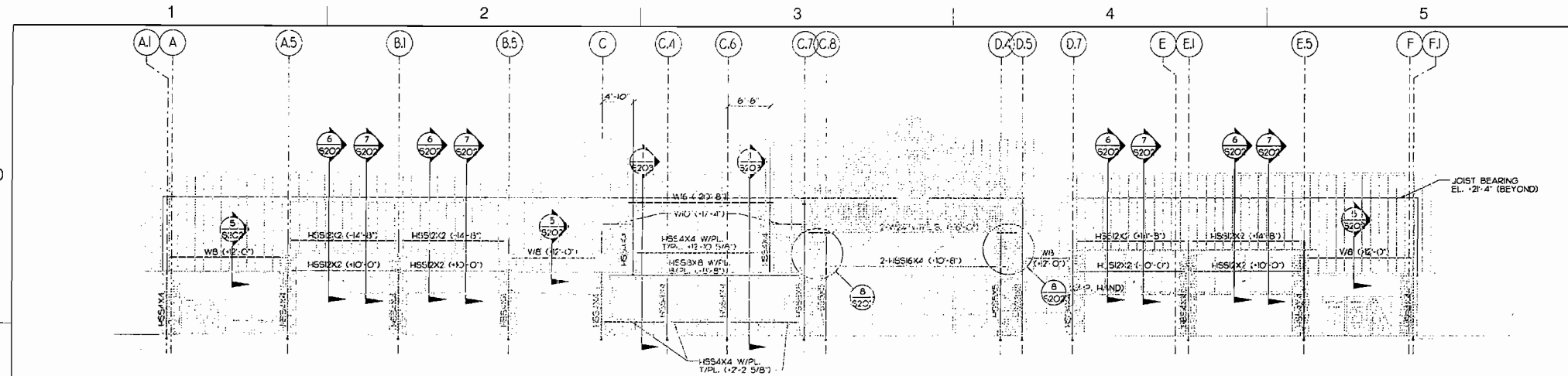
OKATIE RETAIL INVESTORS LLC
OKATIE CENTER PHASE ONE
FOOD LION

Rev	Date	Description
08/14/07		ISSUED FOR GC BIDDING
09/18/07		SHEET NUMBER REVISIONS
04/27/07		ISSUED FOR FOOD LION REVIEW

Project No.: 08302A-FL
Drawn by: DQP
Checked by: TBG

Sections and Details
BUILDING 3
S-203
KGA 06-4170 Food Lion

To order plans, go to www.ldirepro.com



ai DESIGN GROUP
ARCHITECTURE / INTERIORS

500 South College Street
Suite 200
Charlotte, NC 28202

Phone (704) 731-8080
Fax (704) 731-8090
www.aidgmc.com

KingGuinn Associates
STRUCTURAL ENGINEERS

1309 Amble Drive
Charlotte, North Carolina 28208
(704) 597-1349 Fax (704) 597-1385



OKATIE RETAIL INVESTORS LLC

OKATIE CENTER
PHASE ONE

FOOD LION

05/14/07	ISSUED FOR GC BIDDING
03/18/07	SHEET NUMBER REVISIONS
04/27/07	ISSUED FOR FOOD LION REVIEW
Rev	Date
	04/27/07

Project No.: 08302A-FL
Drawn by: DCF
Checked by: TBG

Elevations and Details

BUILDING 3

S-300

To order plans, go to www.ldirepro.com

KGA 06-4170 Food Lion