



5617 QUAIL COVEY LN
WENDELL, NC 27591
OFF: (919) 625-8864
FAX: (919) 217-2867



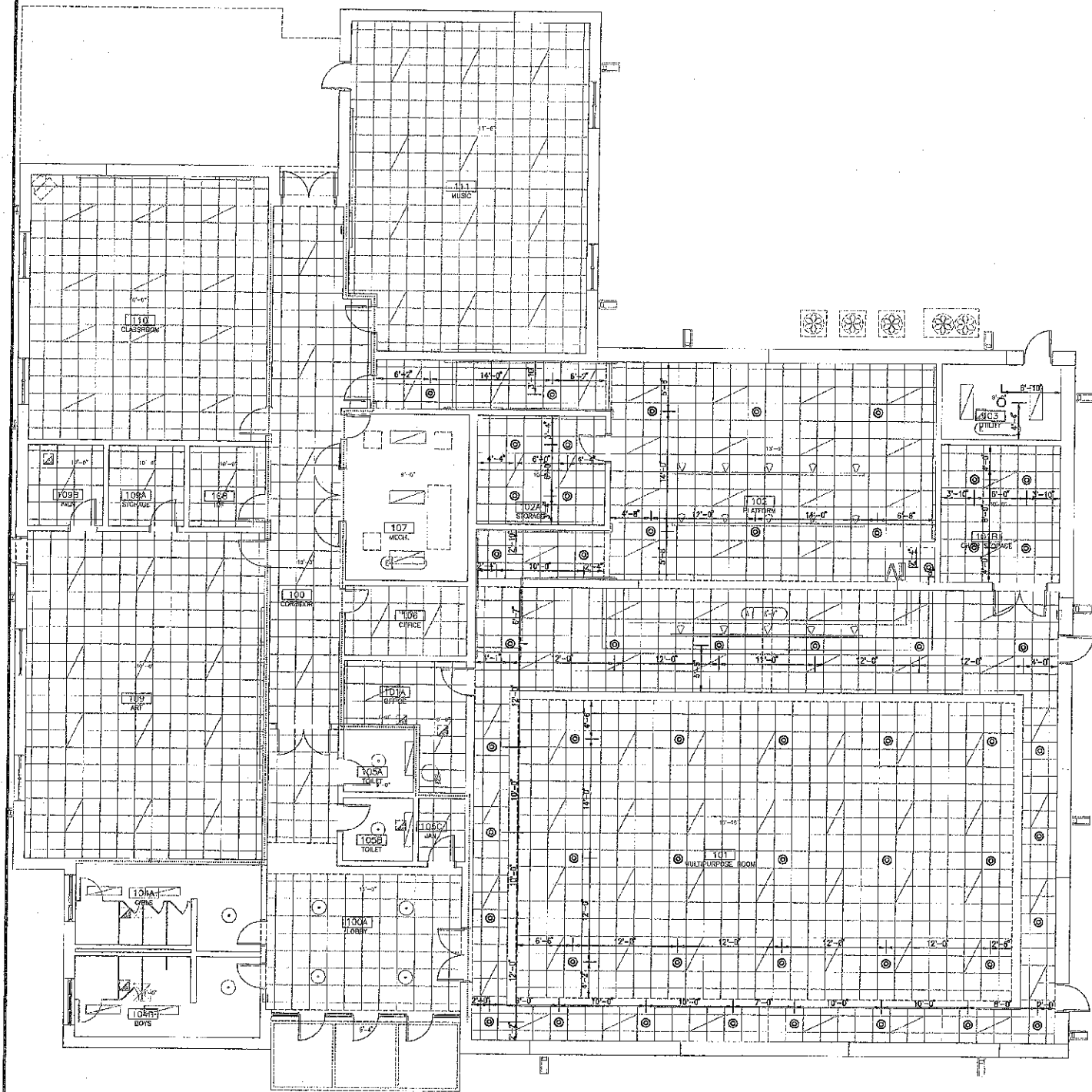
214 Burgess St.
Fayetteville, NC 28301
Phone: 910.484.4989
Fax: 910.484.1466
www.sfla.biz



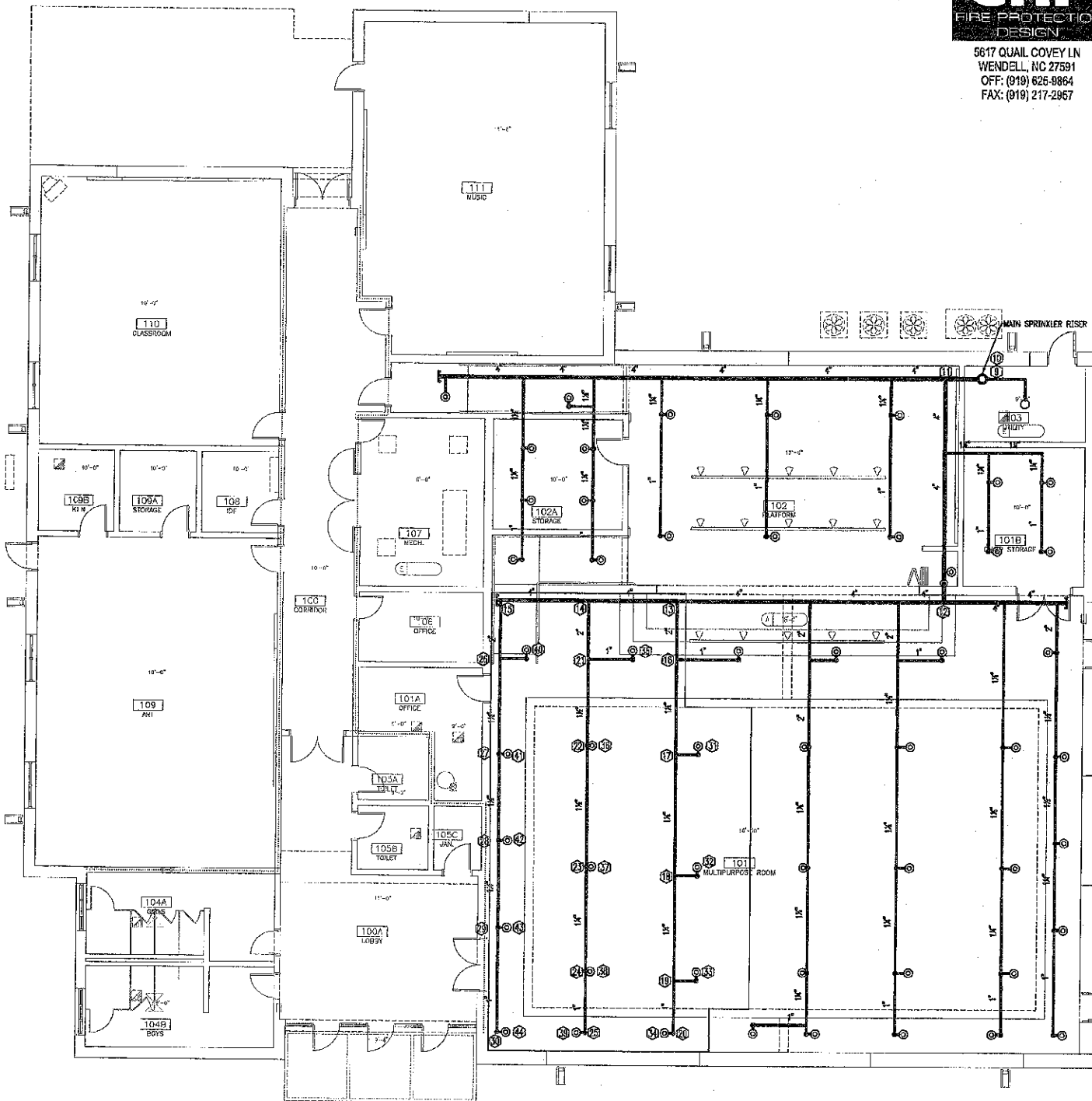
CONSULTING ENGINEERS
PROGRESSIVE DESIGN
COLLABORATIVE, L.L.C.
POST OFFICE BOX 61249
RALEIGH, N. C. 27661-1249
TELEPHONE 919-780-8889
PDC# 06021

ADDITIONS
BLUE CREEK & NORTHWOODS ELEMENTARY SCHOOLS

Northwoods Fire Protection Plan



**NORTHWOODS
SPRINKLER PLAN**
SCALE: 1" = 8'-0"



**NORTHWOODS
PIPING PLAN**
SCALE: 1" = 8'-0"

LEGEND
 ○ NEW QUICK RESPONSE RECESSED PENDENT SPRINKLER, 5.6 K-FACTOR, 150°F, 1" ORIFICE, CHROME 2-PIECE ESCUTCHEON AND FINISH.
 — NEW SPRINKLER PIPING SIZE AS INDICATED
 ① HYDRAULIC CALCULATION NODE POINT.

Project #: 002810001
 Drawn By: 002830000
 Checked By: GNP
 Issue Date: NLP
 Revisions: 02/28/2007

FP-4