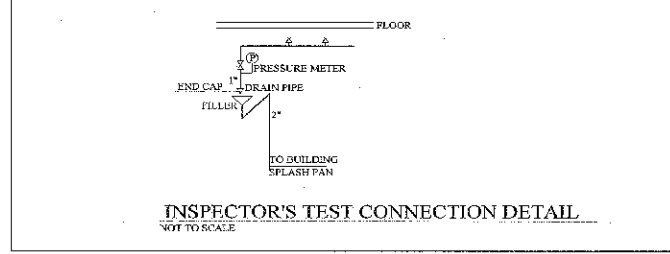
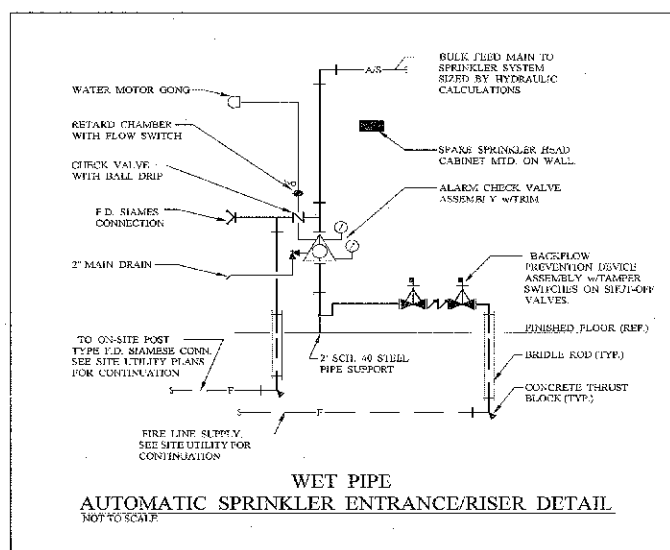


REVISIONS:

DEVICE LEGEND	DRAWING INDEX										
SPRINKLER NEW BRASS UPRIGHT ORDS 65K FLOW SWITCH FIRE DEPARTMENT CONNECTION FIRE ALARM ASSEMBLY SPRINKLER VALVE ASSEMBLY PUMP PRESSURE METER	FP001 GENERAL NOTES & LEGENDS & DETAILS FP101 FIRST FLOOR SPRINKLER PLAN FP102 MEZZ FLOOR SPRINKLER PLAN										
FIRE PROTECTION NOTES	FIRE PROTECTION ABBREVIATIONS										
<ol style="list-style-type: none"> THE SPRINKLER CONTRACTOR SHALL PROVIDE COMPLETE HYDRAULIC CALCULATIONS, PIPE SIZING, PIPE MATERIAL WITH LAY-OUT DWGS & CONSTRUCTION LAY-OUT DWGS. ALL SPRINKLER HEADS, SIGNALING, ELECTRIC TELEPHONE SWITCHGEAR & ELEVATOR MECHANICAL ROOMS SHALL BE PROVIDED BY SHUT-OFF VALVES W/ TAMPER SWITCHES. THE INDICATED PIPE SIZES & ROUTING IS SUGGESTED. AT CONTRACTOR'S OPTION, ALTERNATE SIZE & ROUTING OF THE FIRE SPRINKLER SYSTEM MAY BE SUBMITTED FOR APPROVAL. PROVIDED ALL APPLICABLE CODES & REQUIREMENTS ARE MET & HYDRAULIC CALCULATIONS ARE FURNISHED. THE FIRE PROTECTION SYSTEM DESIGN, INSTALLATION AND MATERIALS SHALL BE IN COMPLIANCE WITH FLORIDA FIRE PREVENTION CODE 2004 EDITION, 2004 FLORIDA BUILDING CODE, NFPA 13R (2002) FOR RESIDENTIAL, NFPA (2003), NFPA 20 (1999), NFPA 24 (2002) AND ALL LOCAL REQUIREMENTS INCLUDING THE FLORIDA ADMINISTRATIVE CODE. SPRINKLER SYSTEM TO BE INSTALLED BY A STATE CERTIFIED FIRE PROTECTION CONTRACTOR. CONTRACTOR SHALL COORDINATE WITH STRUCTURE, CEILING GRID AND ELEVATION, AND OTHER MECHANICAL AND ELECTRICAL SERVICES BEFORE FABRICATING AND INSTALLING SPRINKLER HEADS & PIPING. MAKE OFFSETS TO PIPING AS REQUIRED FOR FIELD CONDITIONS. MAINTAIN 6" CLEARANCE BETWEEN PIPING AND 1 AND 2 HOUR RATED WALLS INCLUDING CURB/WALLS. ALL VALVES SHALL BE BY DOMESTIC MANUFACTURE, U.L. LISTED FOR FIRE PROTECTION SERVICE AND RATED FOR 175 PSI WORKING PRESSURE. PROVIDE U.L. LISTED FM APPROVED TAMPER SWITCHES AT CONTROL VALVE LOCATIONS. PROVIDE U.L. LISTED FM APPROVED FLOW SWITCHES, WHERE SHOWN, AT CONTROL VALVE LOCATIONS. SPRINKLER HEADS SHALL BE U.L. LISTED AS INDICATED IN SCHEDULE AND RATED FOR 175 PSI WORKING PRESSURE. PROVIDE HEAD GUARDS ON UPRIGHT AND PENDENT SPRINKLER HEADS LOCATED IN ELEVATOR SHAFT, MECHANICAL SHAFT, ELECTRICAL TELEPHONE, MECHANICAL AND MACHINE ROOMS. CONTRACTOR SHALL PROVIDE THE OWNER WITH A COPY OF NFPA 25. CONTRACTOR SHALL PROVIDE PLUSHING CONNECTIONS WHERE SHOWN ON PLANS. PROVIDE A DRAIN CONNECTION FOR ALL TRAPPED SECTION OF PIPING. INSPECTORS TEST AND DRAIN VALVE, SUPERVISED SHUT-OFF VALVES, SHALL BE LOCATED A MAXIMUM OF 7'-0" AFT. ALL SPRINKLER HEADS SHALL BE CENTERED AND PRESENT A NEAT AND BALANCED CEILING PATTERN. PIPING TO BE IN BLACK STEEL IN AIR CONDITIONED SPACES. PIPING IN NON-AIR CONDITIONED SPACES SHALL BE BLACK STEEL 40 (PAINTED) WITH AN ALTERNATE FOR GALVANIZED SCHEDULE 40. GROOVED FITTINGS ARE NOT ALLOWED WHERE PRESSURE EXCEEDS 175 PSI. SPRINKLER HEADS TO BE GUN WHITE PLATED SEMI-RECESSED TYPE FOR SIDE WALL AND FOR CEILING LOCATIONS, BRASS UPRIGHT FOR EXPOSED LOCATIONS, PLUSH CONCEALED TYPE FOR FIRST FLOOR LOBBY AREAS. TEFLON FINISHED HEADS TO BE USED IN NON-AIR CONDITIONED AREAS. SPRINKLER SUBCONTRACTOR TO PROVIDE ALL REQUIRED STANDPIPES AND FIRE HOSE VALVES, FLOW AND TAMPER SWITCHES, PRESSURE REDUCING VALVES ALL FLOOR, 2" ADRS CONNECTIONS, INSPECTOR TEST STATIONS, SPARE SPRINKLER HEAD CABINET, ALL NECESSARY DRAINS AND SIGNALS. FIRE PUMP AND CONTROLLER SHALL BE SIZED ACCORDING TO HYDRAULIC CALCULATION. FLOW TEST, AND AS INDICATED ON DWGS, FIRE PUMP SHALL BE DESIGNED WITH ALL ASSOCIATED ACCESSORIES INCLUDING JOCKEY PUMP AND CONTROLLER, PUMP BYPASS, AND NECESSARY VALVING TO MEET LOCAL CODES AND NFPA STANDARDS. FUEL TANK OF 300 GALLON SIZE TO BE PROVIDED. PROVIDE REMOTE ANNUNCIATOR AT FIRE COMMAND ROOM AND REMOTE ALARM AT SECURITY TASK. ALL EXPOSED FIRE ALARM PIECES (STROBES, SPEAKERS, PULL STATIONS) TO BE WHITE IN COLOR WHEN POSSIBLE. FIRE CONTRACTOR MUST PROVIDE LANDLORD AND TENANT WITH A COPY OF NFPA'S 2002 EDITION. SPRINKLER SUBCONTRACTOR TO HOOK TO SITE UTILITY SOURCES AND PROVIDE ALL LEASING (FOR POS) INDICATOR VALVE SUCTION SIZING SHALL BE DIRT/TLE IRON. SPRINKLER HEAD INSTALLATION SHOULD BE 2" ADRS SO HEADS ARE NOT LOCATED AT SIDE SPACE OR PIPED ABOVE MAINLINE TO PREVENT SEDIMENT FROM CLOGGING THE HEADS. HIGH HEAT HEADS WHERE REQUIRED. FIRE PUMP AND PIPING DESIGNED FOR KNOCKING DURING EXERCISE CYCLE. PROVIDE SIDEWALL SHEL HEAD IN PRIVATE GARAGES AND PROVIDE ADDITIONAL AFR HEAD ON 8 FT. CENTER AT OUTSIDE OF GARAGE DOORS. THE STRUCTURAL ENGINEER SHALL INCLUDE THE LOAD FOR THE SPRINKLER SYSTEM AND OTHER FIRE PROTECTION COMPONENTS INTO THE DESIGN OF THE STRUCTURE. REFER TO STRUCTURAL DRAWINGS SHEET. 	<table border="0"> <tr> <td>SVA</td> <td>SPRINKLER VALVE ASSEMBLY</td> </tr> <tr> <td>FAA</td> <td>FIRE ALARM ASSEMBLY</td> </tr> <tr> <td>F.P.C.</td> <td>FIRE PROTECTION CONTRACTOR</td> </tr> <tr> <td>FDC</td> <td>FIRE DEPARTMENT CONNECTION</td> </tr> <tr> <td>U.L.</td> <td>UNDERWRITERS LABORATORY INC.</td> </tr> </table>	SVA	SPRINKLER VALVE ASSEMBLY	FAA	FIRE ALARM ASSEMBLY	F.P.C.	FIRE PROTECTION CONTRACTOR	FDC	FIRE DEPARTMENT CONNECTION	U.L.	UNDERWRITERS LABORATORY INC.
SVA	SPRINKLER VALVE ASSEMBLY										
FAA	FIRE ALARM ASSEMBLY										
F.P.C.	FIRE PROTECTION CONTRACTOR										
FDC	FIRE DEPARTMENT CONNECTION										
U.L.	UNDERWRITERS LABORATORY INC.										



WARNING: THIS IS A VIOLATION OF THE LAW FOR ANY PERSON WHOSE ACTING UNDER THE JURISDICTION OF THE ARCHITECT TO ALTER OR REPRODUCE THESE DRAWINGS IN ANY WAY.



Buffalo, New York
 MWT Architecture, P.C.
 6900 Main Street - Suite 120
 Buffalo, NY 14224
 Ph: 716.621.0600 Fax: 631.2340

Charlotte, North Carolina
 MWT Architecture, P.C.
 520 Collins Allman Drive - Suite 200
 Charlotte, NC 28262
 Ph: 704.947.9772 Fax: 363.1725

Las Vegas, Nevada
 MWT Architecture, P.C.
 3753 Howard Hughes Parkway - Suite 200
 Las Vegas, NV 89109
 Ph: 702.365.2200 Fax: 784.7601

Washington, DC
 MWT Architecture, P.C.
 1655 N. Fort Myer Drive - Suite 700
 Arlington, VA 22209
 Ph: 703.598.0296 Fax: 998.2234



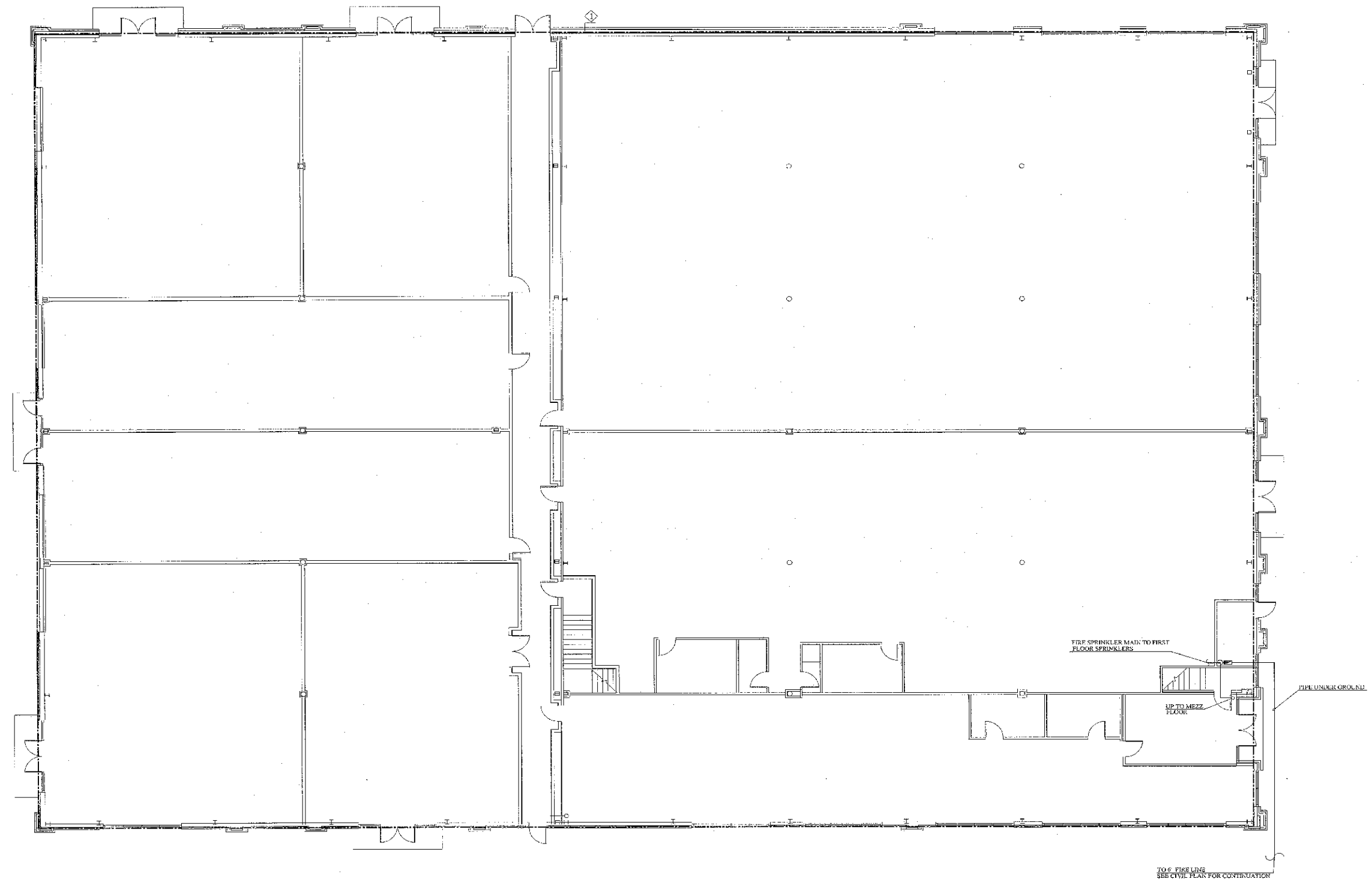
JOB NO.: NWYK-03-27-MEP



Northlake Pavilion Building #3
 Metromart Ferry & Stateville Rd
 Charlotte, NC

PROJECT NO.: 05271-3
 DATE: 08/21/07
 DRAWN BY:
 CHD. BY:
 GENERAL NOTES & LEGENDS & DETAILS
 SHEET FP001

REVISIONS:



FIRST FLOOR SPRINKLER PLAN
SCALE 1/8" = 1'-0"

FIRE PROTECTION AREA COVERAGE FLAG NOTES

◆ PROVIDE ORDINARY HAZARD GROUP 1 OCCUPANCY COVERAGE WITH A DENSITY OF 0.15 GPM/SQ.FT.

GENERAL NOTES:

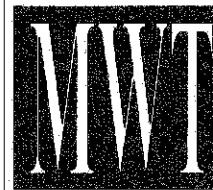
1. OCCUPANCY HAZARD CLASSIFICATION SHALL BE REVISUED AT TENANT IMPROVEMENT DESIGN.



JOB NO.: NWYK-03-57-MEP

Mohamed Charaf
EIT/Architect
NC LIC No. 052826

WARNING
IT IS A VIOLATION OF THE LAW FOR ANY PERSON UNLESS ACTING UNDER THE DIRECTION OF THE ARCHITECT TO ALTER OR REPRODUCE THESE DRAWINGS IN ANY WAY.



Buffalo, New York
MWT Architecture, P.C.
630 Main Street - Suite 120
Williamsville, NY 14221
Ph: 716.631.0600 Fax: 631.2349

Charlotte, North Carolina
MWT Architecture, P.C.
520 Collins Albanian Drive - Suite 209
Charlotte, NC 28262
Ph: 704.947.9772 Fax: 998.1725

Las Vegas, Nevada
MWT Architecture, P.C.
3743 Harvard Hughes Parkway - Suite 200
Las Vegas, NV 89169
Ph: 702.365.5200 Fax: 784.7601

Washington, DC
MWT Architecture
1655 N. Fort Myer Drive - Suite 700
Arlington, VA 22209
Ph: 703.996.0200 Fax: 998.5234

Northlake Pavilion Building #3
Metramont Perry & Stateville Rd
Charlotte, NC

PROJECT NO.: 05271-3

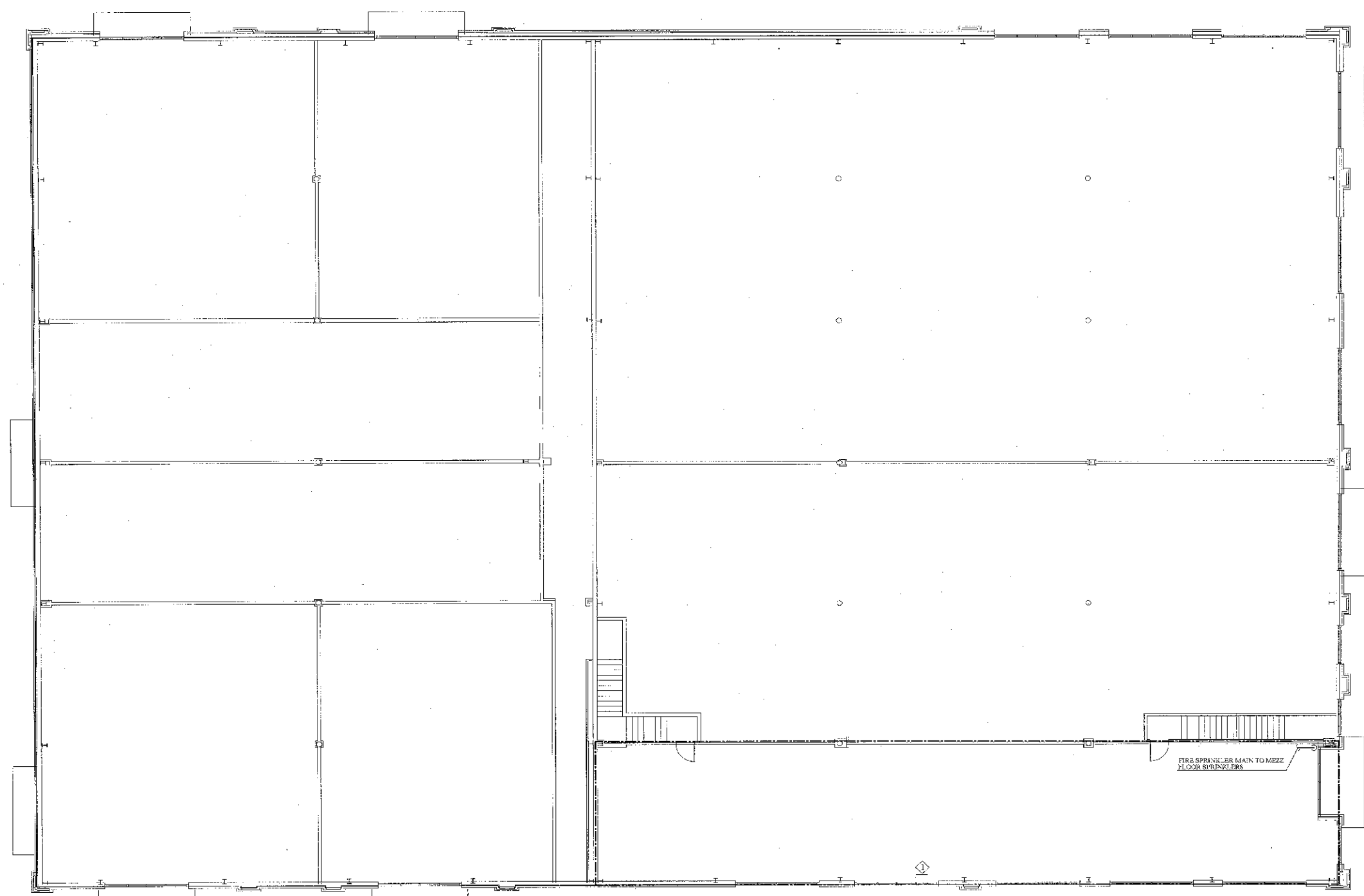
DATE: 08/21/07

DRAWN BY:

CHKD. BY: **FIRST FLOOR SPRINKLER PLAN**

SHEET FP101

REVISIONS:



FIRE PROTECTION AREA COVERAGE FLAG NOTES

◇ PROVIDE ORDINARY HAZARD GROUP I OCCUPANCY COVERAGE WITH A DENSITY OF 0.15 GPM/SQ.FT.

GENERAL NOTES:

1. OCCUPANCY HAZARD CLASSIFICATION SHALL BE REVIEWED AT TENANT IMPROVEMENT DESIGN.

MEZZ FLOOR SPRINKLER PLAN
SCALE 1/8"=1'-0"

GROUND FLOOR

ENGINEERING

JOB NO.: NYWK-03-57-MEP

SEAL

10/21/07

Mohamed Cherif El Aboud, P.E.
NC Lic. No. 952325

WARNING
IT IS A VIOLATION OF THE LAW FOR ANY PERSON UNLESS ACTING UNDER THE DIRECTION OF THE ARCHITECT TO ALTER OR REPRODUCE THESE DRAWINGS IN ANY MANNER.



Raleigh, New York
MWT Architecture, P.C.
6390 Main Street - Suite 120
Wilkesboro, NY 14221
Ph: 716.651.0600 Fax: 651.2749

Charlotte, North Carolina
MWT Architecture, P.C.
520 Collins Aikman Drive - Suite 200
Charlotte, NC 28202
Ph: 704.547.5772 Fax: 595.1723

Las Vegas, Nevada
MWT Architecture, P.C.
3753 Howard Junction Parkway - Suite 200
Las Vegas, NV 89169
Ph: 702.365.5700 Fax: 784.7691

Washington, DC
MWT Architecture
1655 N. Fort Myer Drive - Suite 700
Arlington, VA 22209
Ph: 703.598.0206 Fax: 538.5254

Northlake Pavilion Building #3
Metromart Ferry & Stateville Rd
Charlotte, NC

PROJECT NO.: 03271-3
DATE: 08/21/07
DRAWN BY:
CHKD. BY:

MEZZ FLOOR SPRINKLER PLAN

SHEET FP102