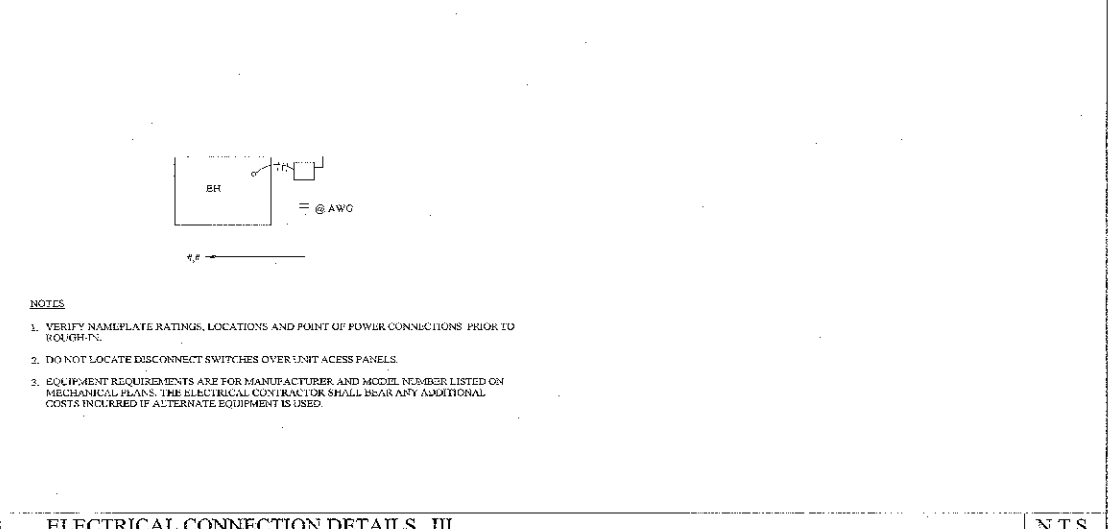
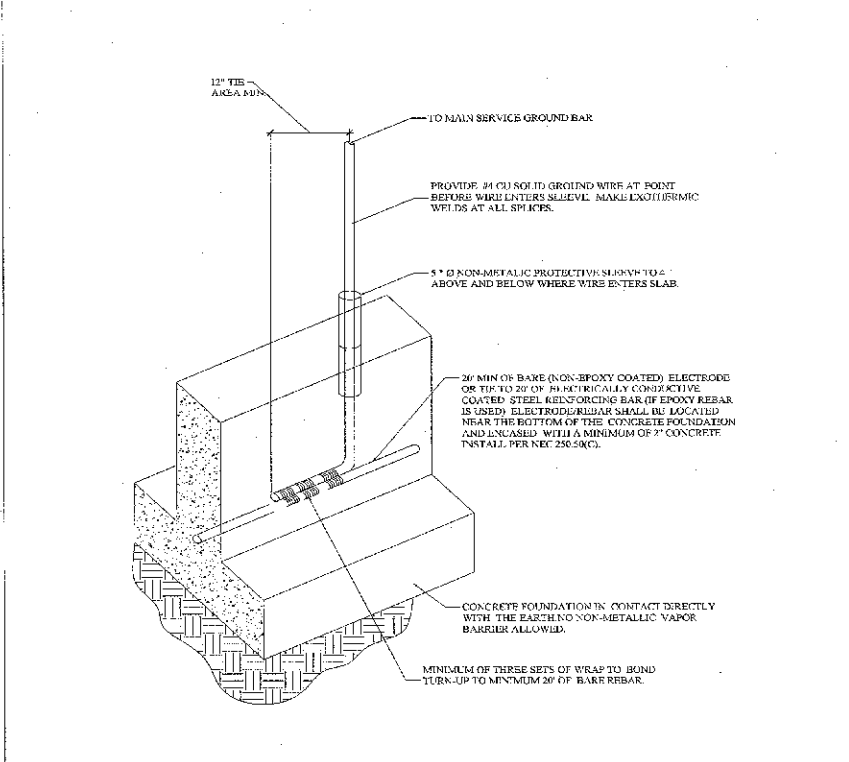


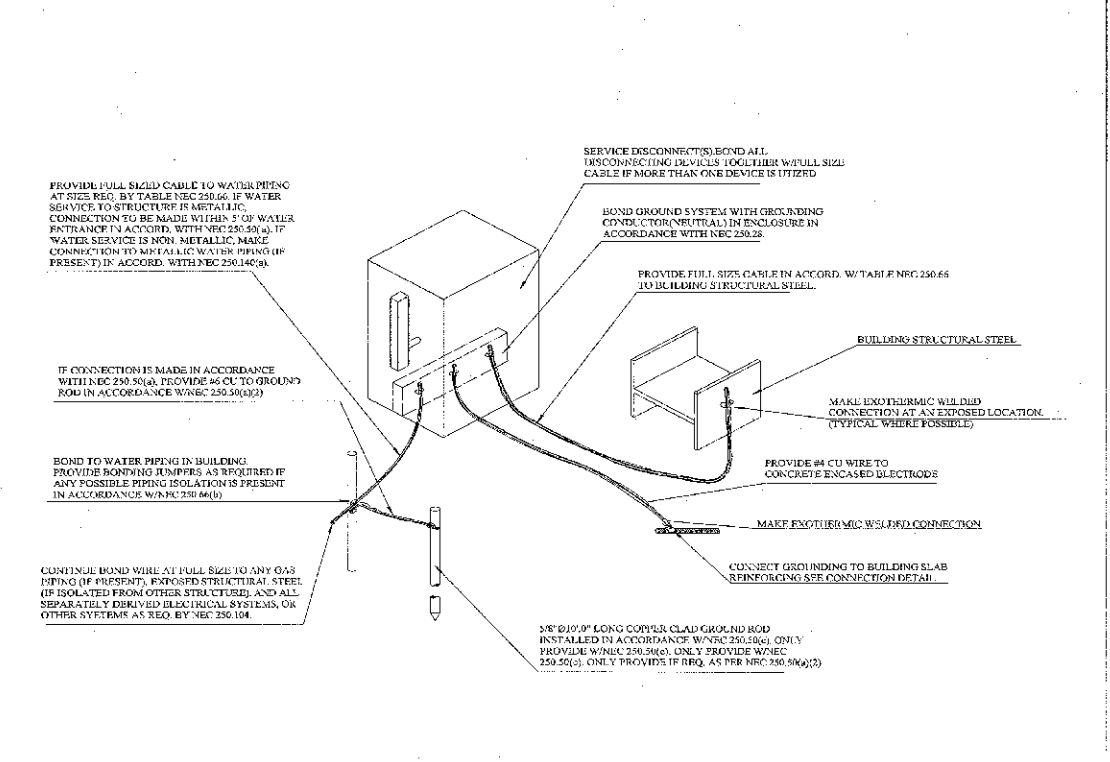
1 ELECTRICAL CONNECTION DETAILS 1 N.T.S.



3 ELECTRICAL CONNECTION DETAILS III N.T.S.

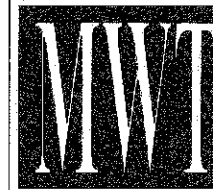


3 ELECTRICAL GROUNDING DETAIL I N.T.S.



4 ELECTRICAL GROUNDING DETAIL II N.T.S.

WARNING: IT IS A VIOLATION OF THE LAW FOR ANY PERSON, UNLESS ACTING UNDER THE DIRECTION OF THE ARCHITECT, TO ALTER OR REPRODUCE THESE DRAWINGS IN ANY WAY.



Buffalo, New York
MWT Architecture, P.C.
6350 Main Street - Suite 120
Williamsville, NY 14221
Tel: 776.631.6800 Fax: 631.234.4940

Charlotte, North Carolina
MWT Architecture, P.C.
523 Collins Avenue Drive - Suite 200
Charlotte, NC 28202
Tel: 704.947.9772 Fax: 295.1725

Las Vegas, Nevada
MWT Architecture, P.C.
3253 Howard Hughes Parkway - Suite 200
Las Vegas, NV 89169
Tel: 702.265.3300 Fax: 784.7501

Washington, DC
MWT Architecture
1655 N. Fort Myer Drive - Suite 700
Arlington, VA 22209
Tel: 703.958.4306 Fax: 578.5234

GROUND FLOOR

ENGINEERING

JOB NO.: MWYR-05-37-MEP

SCALE: AS SHOWN

DATE: 08/21/07

PROJECT NO.: 05271-3

DATE: 08/21/07

DRAWN BY:

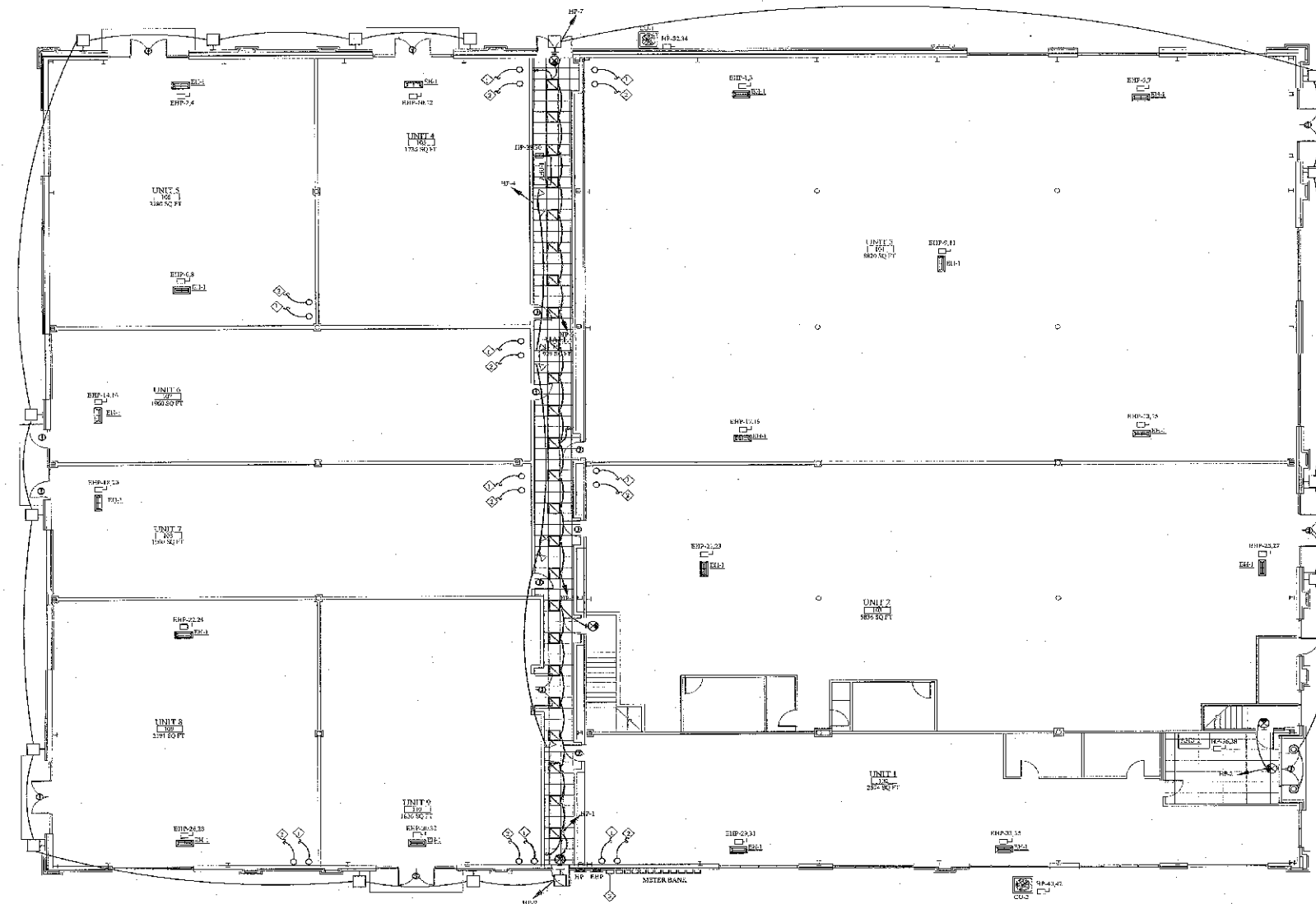
CHKD BY:

ELECTRICAL DETAILS

Northlake Pavilion Building #3
Metromont Plaza & Statesville Rd
Charlotte, NC

PROJECT NO.: 05271-3
DATE: 08/21/07
DRAWN BY:
CHKD BY:
ELECTRICAL DETAILS

SHEET E101



GENERAL NOTES:

- 1 ALL OLD PANELS MUST BE REMOVED
- 2 ALL EXTERIOR LIGHTING TO BE TURNED OFF AT A PREDETERMINED TIME ON BY PHOTOCELL CITY TIME AND TIME CLOCK SHALL BE PLACED IN UTILITY ROOM. PHOTOCELL SHALL BE PLACED ON ROOF BY CONTRACTOR.

KEY NOTES:

- ◇ CONTRACTOR TO STUD UP AND CAP 4" ABOVE CEILING POWER CONDUIT FROM METER CENTER AT LEAST 12" A.F.G.
- ◇ CONTRACTOR TO STUD UP AND CAP 2" ABOVE CEILING PHONE AND CATV CONDUIT FROM TELEPHONE/CATV CABINET AT LEAST 12" A.F.G.
- ◇ REFER TO DRAWING E3.03 FOR METER DETAILS AND SPECIFICATIONS.

ELECTRICAL CONTRACTOR SHALL PROVIDE J-BOX AND 3/4" CONDUIT STUD THROUGH WALL FOR FUTURE TENANT SIGN. COORDINATE MOUNTING HEIGHT AND FINISH COLOR WITH ARCHITECT PRIOR TO ROUGH-IN. (TYPICAL FOR ALL)

FIRST FLOOR ELECTRICAL PLAN
SCALE 3/32"=1'-0"

LIGHTING FIXTURE SCHEDULE						
SYMBOL	MANUF.	CATALOG NUMBER	LENS NO.	TYPE	WATTS	DESCRIPTION
⊙	CHLORIDE	CXLN1RW		INCLUDED	15	ALUMINUM LED EXIT, SINGLE FACE, DAMP LABEL LISTED REFER TO SUPPLIER SPECIFICATIONS FOR EMERGENCY W/ MINIMUM 90 MINUTS BATTERY PACK
⊙	ENTRONIX	LLP3-W		INCLUDED	15	FLUORESCENT LED EMERGENCY W/ MINIMUM 90 MINUTES BATTERY PACK
⊙		COTGVN-CG9T052	1	MH	50	LIGHTOLIER CALCULITE HID DOWNLIGHT
⊙	POSLCAST	FR495-41		MH	60	SPALLBOARD SHIELDING WALL PACK NIGHTY SERIES COMPACT NRG-315 EMERGENCY W/ MINIMUM 90 MINUTS BATTERY PACK
⊙	LSI MOWESS	K07G9-217FAS50(2)	2	F17-T8-25K	32	1/2" RECESSED PARABOLIC TROFFER WITH 3" DEEP LOUVERS

WARNING: IT IS A VIOLATION OF THE LAW FOR ANY PERSON, UNLESS ACTING UNDER THE DIRECTION OF THE ARCHITECT, TO ALTER OR REPRODUCE THESE DRAWINGS IN ANY WAY.



Buffalo, New York
MWT Architecture, P.C.
6397 Main Street - Suite 120
Williamsville, NY 14221
Ph: 716.631.0890 Fax: 631.2340

Charlotte, North Carolina
MWT Architecture, P.C.
520 Collins Alabama Drive - Suite 200
Charlotte, NC 28262
Ph: 704.947.9772 Fax: 595.1725

Las Vegas, Nevada
MWT Architecture, P.C.
1753 Howard Hughes Parkway - Suite 200
Las Vegas, NV 89169
Ph: 702.355.3500 Fax: 784.7601

Washington, DC
MWT Architecture
1655 N. Fort Myers Drive - Suite 700
Arlington, VA 22209
Ph: 703.536.0706 Fax: 598.3234

GROUND FLOOR
ENGINEERING

JOB NO.: NWYK-05-37-MEP

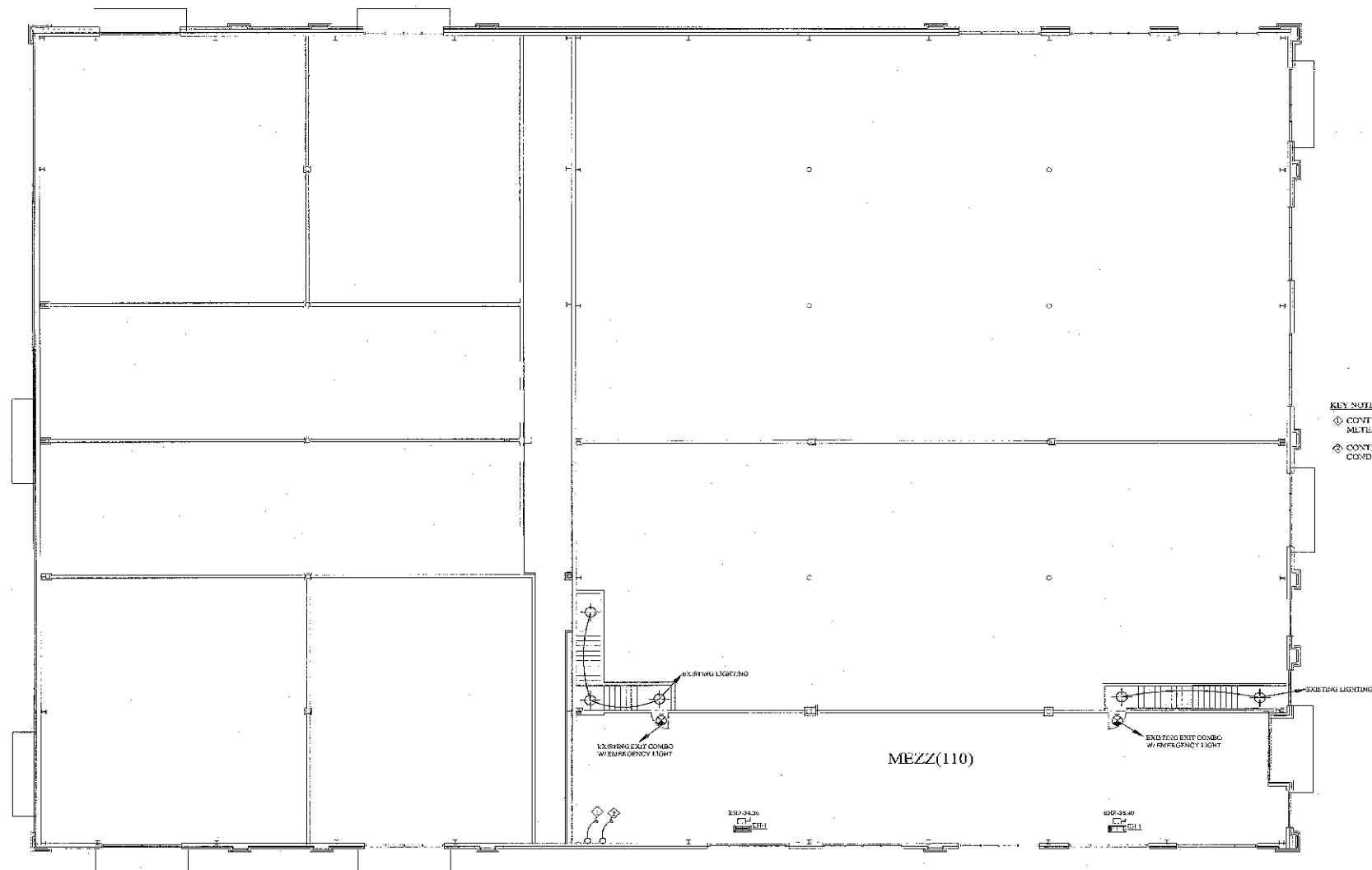
Northlake Pavilion Building #3
Metromont Pkwy & Strassville Rd
Charlotte, NC

PROJECT NO.: 05271-3
DATE: 08/21/07
DRAWN BY:
CHKD BY:

FIRST FLOOR ELECTRICAL PLAN

SHEET E201

REVISIONS:



KEY NOTES:

- ⊕ CONTRACTOR TO STUB UP AND CAP 4" ABOVE CEILING POWER CONDUIT FROM MUTIS CENTER AT LEAST 12" AFT.
- ⊕ CONTRACTOR TO STUB UP AND CAP 2" ABOVE CEILING PHONE AND CABLE CONDUIT FROM TELEPHONE/CABLE CABINET AT LEAST 12" AFT.

MEZZ ELECTRICAL PLAN
SCALE 3/32"=1'-0"

LIGHTING FIXTURE SCHEDULE						
SYMBOL	MANUF.	CATALOG NUMBER	REQ.	TYPE	WATTS	DESCRIPTION
⊕	CHLORIDE	CXLN1RW	INCLUDED	UNIVERSAL	13	ALUMINUM LED EXH. SINGLE FACE, DAMPLABEL LISTED REFER TO FIXTURE SCHEDULE NOTES EMERGENCY W/BATTERY PACK
⊕	EXTRONIX	1180-W	INCLUDED	WALL/COULTRMN MOUNTED	15	PRISCOLITE ES07 EMERGENCY W/BATTERY PACK
⊕				CEILING SURFACE		EXISTING LIGHTING

WARNING
IT IS A VIOLATION OF THE LAW FOR ANY PERSON, UNLESS ACTING UNDER THE DIRECTION OF THE ARCHITECT, TO ALTER OR REPRODUCE THESE DRAWINGS IN ANY WAY.



Buffalo, New York
MWT Architecture, P.C.
6390 Main Street - Suite 120
Williamsville, NY 14221
Ph: 716.651.0500 Fax: 651.2340

Charlotte, North Carolina
MWT Architecture, P.C.
530 Collins, Address Drive - Suite 200
Charlotte, NC 28262
Ph: 704.947.9772 Fax: 595.1725

Las Vegas, Nevada
MWT Architecture, P.C.
3753 Howard Hughes Parkway - Suite 200
Las Vegas, NV 89169
Ph: 702.341.5200 Fax: 704.7691

Washington, DC
MWT Architecture
1655 N. Fort Myer Drive - Suite 700
Arlington, VA 22209
Ph: 703.596.0206 Fax: 596.2214

GROUND FLOOR
ENGINEERING

JOB NO.: NAYK-03-37-MEP

Seal: Mohamed Elmaghrabi, PE, NC Lic. No. 05202

Northlake Pavilion Building #3
Metromont Pkwy & Statesville Rd
Charlotte, NC

PROJECT NO. 05271-3
DATE: 06/21/07
DRAWN BY:
CHKD BY: MEZZ ELECTRICAL PLAN

SHEET E202

LOAD ANALYSIS FOR PANEL "PANEL 102"						
LOAD DESCRIPTION				CONNECTED KVA	DEMAND FACTOR	DEMAND KVA
GENERAL LIGHTING	2274	sq.ft	X 3 VA/sq.ft	7.922		
TOTAL CONTINUOUS LOADS				7.922	X 1.25	9.653
RECEPTACLES	2574	sq.ft	X 1 VA/sq.ft	2.574		
TOTAL NONCONTINUOUS LOADS				2.574	X 1.00	2.574
TOTAL CONNECTED KVA				10.496		12.227

VOLTAGE: 120/208 3-PHASE MAXIMUM DEMAND AMPERES: 34

LOAD ANALYSIS FOR PANEL "PANEL 103"						
LOAD DESCRIPTION				CONNECTED KVA	DEMAND FACTOR	DEMAND KVA
GENERAL LIGHTING	1735	sq.ft	X 3 VA/sq.ft	5.205		
TOTAL CONTINUOUS LOADS				5.205	X 1.25	6.506
RECEPTACLES	1735	sq.ft	X 1 VA/sq.ft	1.735		
TOTAL NONCONTINUOUS LOADS				1.735	X 1.00	1.735
TOTAL CONNECTED KVA				6.94		8.241

VOLTAGE: 120/208 3-PHASE MAXIMUM DEMAND AMPERES: 22.88

LOAD ANALYSIS FOR PANEL "PANEL 104"						
LOAD DESCRIPTION				CONNECTED KVA	DEMAND FACTOR	DEMAND KVA
GENERAL LIGHTING	1960	sq.ft	X 3 VA/sq.ft	5.88		
TOTAL CONTINUOUS LOADS				5.88	X 1.25	7.35
RECEPTACLES	1960	sq.ft	X 1 VA/sq.ft	1.96		
TOTAL NONCONTINUOUS LOADS				1.96	X 1.00	1.96
TOTAL CONNECTED KVA				7.84		9.31

VOLTAGE: 120/208 3-PHASE MAXIMUM DEMAND AMPERES: 25.84

LOAD ANALYSIS FOR PANEL "PANEL 105"						
LOAD DESCRIPTION				CONNECTED KVA	DEMAND FACTOR	DEMAND KVA
GENERAL LIGHTING	2870	sq.ft	X 3 VA/sq.ft	8.61		
TOTAL CONTINUOUS LOADS				8.61	X 1.25	10.763
RECEPTACLES	2870	sq.ft	X 1 VA/sq.ft	2.87		
TOTAL NONCONTINUOUS LOADS				2.87	X 1.00	2.87
TOTAL CONNECTED KVA				11.48		13.633

VOLTAGE: 120/208 3-PHASE MAXIMUM DEMAND AMPERES: 37.95

LOAD ANALYSIS FOR PANEL "PANEL 106"						
LOAD DESCRIPTION				CONNECTED KVA	DEMAND FACTOR	DEMAND KVA
GENERAL LIGHTING	5836	sq.ft	X 3 VA/sq.ft	17.508		
TOTAL CONTINUOUS LOADS				17.508	X 1.25	21.885
RECEPTACLES	5836	sq.ft	X 1 VA/sq.ft	5.836		
TOTAL NONCONTINUOUS LOADS				5.836	X 1.00	5.836
TOTAL CONNECTED KVA				23.344		27.721

VOLTAGE: 120/208 3-PHASE MAXIMUM DEMAND AMPERES: 75.95

LOAD ANALYSIS FOR PANEL "PANEL 107"						
LOAD DESCRIPTION				CONNECTED KVA	DEMAND FACTOR	DEMAND KVA
GENERAL LIGHTING	2180	sq.ft	X 3 VA/sq.ft	6.54		
TOTAL CONTINUOUS LOADS				6.54	X 1.25	8.175
RECEPTACLES	2180	sq.ft	X 1 VA/sq.ft	2.18		
TOTAL NONCONTINUOUS LOADS				2.18	X 1.00	2.18
TOTAL CONNECTED KVA				8.72		10.355

VOLTAGE: 120/208 3-PHASE MAXIMUM DEMAND AMPERES: 28.75

LOAD ANALYSIS FOR PANEL "PANEL 108"						
LOAD DESCRIPTION				CONNECTED KVA	DEMAND FACTOR	DEMAND KVA
GENERAL LIGHTING	2191	sq.ft	X 3 VA/sq.ft	6.573		
TOTAL CONTINUOUS LOADS				6.573	X 1.25	8.216
RECEPTACLES	2191	sq.ft	X 1 VA/sq.ft	2.191		
TOTAL NONCONTINUOUS LOADS				2.191	X 1.00	2.191
TOTAL CONNECTED KVA				8.764		10.407

VOLTAGE: 120/208 3-PHASE MAXIMUM DEMAND AMPERES: 28.89

LOAD ANALYSIS FOR PANEL "PANEL 109"						
LOAD DESCRIPTION				CONNECTED KVA	DEMAND FACTOR	DEMAND KVA
GENERAL LIGHTING	1836	sq.ft	X 3 VA/sq.ft	5.508		
TOTAL CONTINUOUS LOADS				5.508	X 1.25	6.885
RECEPTACLES	1836	sq.ft	X 1 VA/sq.ft	1.836		
TOTAL NONCONTINUOUS LOADS				1.836	X 1.00	1.836
TOTAL CONNECTED KVA				7.344		8.686

VOLTAGE: 120/208 3-PHASE MAXIMUM DEMAND AMPERES: 24.11

LOAD ANALYSIS FOR PANEL "PANEL 110"						
LOAD DESCRIPTION				CONNECTED KVA	DEMAND FACTOR	DEMAND KVA
GENERAL LIGHTING	19		X 1.88 KVA	35.72		
TOTAL NONCONTINUOUS LOADS				35.72	X 1.00	35.72
TOTAL CONNECTED KVA				35.72		35.72

VOLTAGE: 120/208 3-PHASE MAXIMUM DEMAND AMPERES: 99 A

LOAD ANALYSIS FOR PANEL "PANEL 111"						
LOAD DESCRIPTION				CONNECTED KVA	DEMAND FACTOR	DEMAND KVA
GENERAL LIGHTING	24		X 32 VA	0.77		
WALKSIDE LIGHTING	7		X 13 VA	0.09		
SIGN LIGHTING	3		X 13 VA	0.01		
EMERGENCY LIGHTING	16		X 60 VA	0.96		
EXTERIOR LIGHTING	2		X 59 VA	0.12		
CAN LIGHTING	2		X 59 VA	0.12		
TOTAL CONTINUOUS LOADS				1.98	X 1.25	2.48
AU LOAD	3		X 3750 VA	7.5		
TOTAL NONCONTINUOUS LOADS				7.5	X 1.00	7.5
TOTAL CONNECTED KVA				9.48		9.98

VOLTAGE: 120/208 3-PHASE MAXIMUM DEMAND AMPERES: 27.7 A

LOAD ANALYSIS FOR PANEL "PANEL 101"						
LOAD DESCRIPTION				CONNECTED KVA	DEMAND FACTOR	DEMAND KVA
GENERAL LIGHTING	8820	sq.ft	X 3 VA/sq.ft	26.46		
TOTAL CONTINUOUS LOADS				26.46	X 1.25	30.975
RECEPTACLES	8820	sq.ft	X 1 VA/sq.ft	8.82		
TOTAL NONCONTINUOUS LOADS				8.82	X 1.00	8.82
TOTAL CONNECTED KVA				35.28		39.80

VOLTAGE: 120/208 3-PHASE MAXIMUM DEMAND AMPERES: 107.97

LOAD ANALYSIS FOR PANEL "PANEL 102"						
LOAD DESCRIPTION				CONNECTED KVA	DEMAND FACTOR	DEMAND KVA
GENERAL LIGHTING	1960	sq.ft	X 3 VA/sq.ft	5.88		
TOTAL CONTINUOUS LOADS				5.88	X 1.25	7.35
RECEPTACLES	1960	sq.ft	X 1 VA/sq.ft	1.96		
TOTAL NONCONTINUOUS LOADS				1.96	X 1.00	1.96
TOTAL CONNECTED KVA				7.84		9.31

VOLTAGE: 120/208 3-PHASE MAXIMUM DEMAND AMPERES: 25.84

LOAD ANALYSIS FOR PANEL "PANEL 103"						
LOAD DESCRIPTION				CONNECTED KVA	DEMAND FACTOR	DEMAND KVA
GENERAL LIGHTING	2191	sq.ft	X 3 VA/sq.ft	6.573		
TOTAL CONTINUOUS LOADS				6.573	X 1.25	8.216
RECEPTACLES	2191	sq.ft	X 1 VA/sq.ft	2.191		
TOTAL NONCONTINUOUS LOADS				2.191	X 1.00	2.191
TOTAL CONNECTED KVA				8.764		10.407

VOLTAGE: 120/208 3-PHASE MAXIMUM DEMAND AMPERES: 28.89

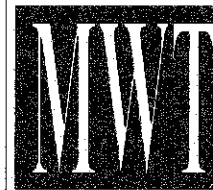
LOAD ANALYSIS FOR PANEL "PANEL 104"						
LOAD DESCRIPTION				CONNECTED KVA	DEMAND FACTOR	DEMAND KVA
GENERAL LIGHTING	1836	sq.ft	X 3 VA/sq.ft	5.508		
TOTAL CONTINUOUS LOADS				5.508	X 1.25	6.885
RECEPTACLES	1836	sq.ft	X 1 VA/sq.ft	1.836		
TOTAL NONCONTINUOUS LOADS				1.836	X 1.00	1.836
TOTAL CONNECTED KVA				7.344		8.686

VOLTAGE: 120/208 3-PHASE MAXIMUM DEMAND AMPERES: 24.11

LOAD ANALYSIS FOR PANEL "PANEL 105"						
LOAD DESCRIPTION				CONNECTED KVA	DEMAND FACTOR	DEMAND KVA
GENERAL LIGHTING	2870	sq.ft	X 3 VA/sq.ft	8.61		
TOTAL CONTINUOUS LOADS				8.61	X 1.25	10.763
RECEPTACLES	2870	sq.ft	X 1 VA/sq.ft	2.87		
TOTAL NONCONTINUOUS LOADS				2.87	X 1.00	2.87
TOTAL CONNECTED KVA				11.48		13.633

VOLTAGE: 120/208 3-PHASE MAXIMUM DEMAND AMPERES: 37.95

IT IS A VIOLATION OF THE LAW FOR ANY PERSON UNLESS ACTING UNDER THE DIRECTION OF THE ARCHITECT TO ALTER OR REPRODUCE THESE DRAWINGS IN ANY WAY.



Buffalo, New York
MWT Architecture, P.C.
6390 Main Street - Suite 120
Williamsville, NY 14221
Ph: 716.631.0000 Fax: 631.2540

Charlotte, North Carolina
MWT Architecture, P.C.
520 Collins Avenue Drive - Suite 200
Charlotte, NC 28202
Ph: 704.947.9772 Fax: 555.1725

Las Vegas, Nevada
MWT Architecture, P.C.
3753 Howard Hughes Parkway - Suite 200
Las Vegas, NV 89109
Ph: 702.363.5300 Fax: 702.7661

Washington, DC
MWT Architecture
1635 N. Noy Myer Drive - Suite 700
Arlington, VA 22209
Ph: 703.958.0200 Fax: 508.5221

GROUND FLOOR
ENGINEERING

JOB NO.: NYWK-03-27-MEP

Mohamed Elshahhat
EIT/Professional Engineer
NC Lic. No. 05052

Northlake Pavilion Building #3
Metromont Plaza & Stateville Rd
Charlotte, NC

PROJECT NO.: 06271-3
DATE: 08/21/07
DRAWN BY:
CHKD. BY:
LOAD CALCULATION

SHEET E301

REVISIONS:

100 AMP 120/208 V 3 PHASE, 4-WIRE												PANEL "BP" (22,000 A/C)												EQUAL TO TYPE A/C		
LOAD DESCRIPTION	PH-A KVA	PH-B KVA	PH-C KVA	TRIP/POLE	WIRE	CON- DUIT	C.K.T. NO.	C.K.T. NO.	WIRE	CON- DUIT	TRIP/POLE	PH-A KVA	PH-B KVA	PH-C KVA	LOAD DESCRIPTION	PH-A KVA	PH-B KVA	PH-C KVA								
SIDE WAY LIGHTING	0.75	0.75		201P	12	1/2	1	2	12	1/2	201P	0.03			SPARE											
SIDE WAY LIGHTING				201P	12	1/2	3	4	12	1/2	201P	0.03			EMERGENCY LIGHTING											
SIDE WAY LIGHTING				201P	12	1/2	5	6							SPARE											
EXTERIOR WALL LIGHTING	0.42			201P	12	1/2	7	8							SPARE											
EXTERIOR WALL LIGHTING				201P	12	1/2	9	10							SPARE											
SPARE							11	12							SPARE											
SPARE							13	14							SPARE											
SPARE							15	16							SPARE											
SPARE							17	18							SPARE											
SPARE							19	20							SPARE											
SPARE							21	22							SPARE											
SPARE							23	24							SPARE											
SPARE							25	26							SPARE											
SPARE							27	28	10	3/4	302P	1.75			AHU-1											
SPARE							29	30				1.75			AHU-1											
SPARE							31	32	16	3/4	302P	0.13			CU-1											
SPARE							33	34				0.13			CU-1											
SPARE							35	36	10	3/4	302P	1.75			AHU-2											
SPARE							37	38				1.75			AHU-2											
SPARE							39	40	10	3/4	302P	0.13			CU-2											
SPARE							41	42				0.13			CU-2											
TOTAL KVA: 0.68 0.92 0.26												TOTAL KVA: 1.91 2.06 3.42			0.68 0.92 0.26			2.99 2.98 2.89			22 255 32A					

100 AMP 120/208 V 3 PHASE, 4-WIRE												PANEL "BP" (22,000 A/C)												EQUAL TO TYPE A/C		
LOAD DESCRIPTION	PH-A KVA	PH-B KVA	PH-C KVA	TRIP/POLE	WIRE	CON- DUIT	C.K.T. NO.	C.K.T. NO.	WIRE	CON- DUIT	TRIP/POLE	PH-A KVA	PH-B KVA	PH-C KVA	LOAD DESCRIPTION	PH-A KVA	PH-B KVA	PH-C KVA								
EN-1	0.54			202P	12	1/2	1	2	12	1/2	202P	0.94			EH-1											
EN-1				202P	12	1/2	3	4				0.94			EH-1											
EN-1	0.54	0.94		202P	12	1/2	5	6	12	1/2	202P	0.94	0.94		EH-1											
PH-1				202P	12	1/2	7	8				0.94			EH-1											
PH-1	0.94	0.94		202P	12	1/2	9	10	12	1/2	202P	0.94	0.94		EH-1											
EN-1	0.54			202P	12	1/2	11	12				0.94			EH-1											
EN-1	0.54	0.94		202P	12	1/2	13	14	12	1/2	202P	0.94	0.94		EH-1											
PH-1	0.94			202P	12	1/2	15	16				0.94			EH-1											
EN-1	0.94	0.94		202P	12	1/2	17	18	12	1/2	202P	0.94	0.94		EH-1											
EN-1	0.94			202P	12	1/2	19	20				0.94			EH-1											
EN-1	0.94	0.94		202P	12	1/2	21	22	12	1/2	202P	0.94	0.94		EH-1											
EH-1	0.94	0.94		202P	12	1/2	23	24				0.94	0.94		EH-1											
EH-1	0.94			202P	12	1/2	25	26	12	1/2	202P	0.94	0.94		EH-1											
EH-1	0.94	0.94		202P	12	1/2	27	28				0.94	0.94		EH-1											
EH-1	0.94	0.94		202P	12	1/2	29	30	12	1/2	202P	0.94	0.94		EH-1											
EH-1	0.94			202P	12	1/2	31	32				0.94	0.94		EH-1											
EH-1	0.94	0.94		202P	12	1/2	33	34	12	1/2	202P	0.94	0.94		EH-1											
SPARE							35	36				0.94	0.94		EH-1											
SPARE							37	38	12	1/2	202P	0.94	0.94		EH-1											
SPARE							39	40				0.94	0.94		EH-1											
SPARE							41	42				0.94	0.94		EH-1											
TOTAL KVA: 5.64 5.64 5.64												TOTAL KVA: 6.58 6.58 6.54			5.64 5.64 5.64			12.22 12.22 11.23			102A 102A 94A					

WARNING
IT IS A VIOLATION OF THE LAW FOR ANY
PERSON, UNLESS ACTING UNDER THE
DIRECTION OF THE ARCHITECT, TO ALTER OR
REPRODUCE THESE DRAWINGS IN ANY WAY.



Buffalo, New York
MWT Architecture, P.C.
6790 Nott Street - Suite 170
Williamsville, NY 14221
Ph: 716.631.0600 Fax: 631.2340

Charlotte, North Carolina
MWT Architecture, P.C.
524 Collins Oldham Drive - Suite 206
Charlotte, NC 28262
Ph: 704.247.9772 Fax: 395.1725

Las Vegas, Nevada
MWT Architecture, P.C.
3753 Howard Hughes Parkway - Suite 200
Las Vegas, NV 89109
Ph: 702.365.5200 Fax: 704.7601

Washington, DC
MWT Architecture
1633 N. Fort Myer Drive - Suite 702
Arlington, VA 22209
Ph: 703.958.0206 Fax: 998.5334

GROUND FLOOR
ENGINEERING

JOB NO.: NWYK-03-37-MEP

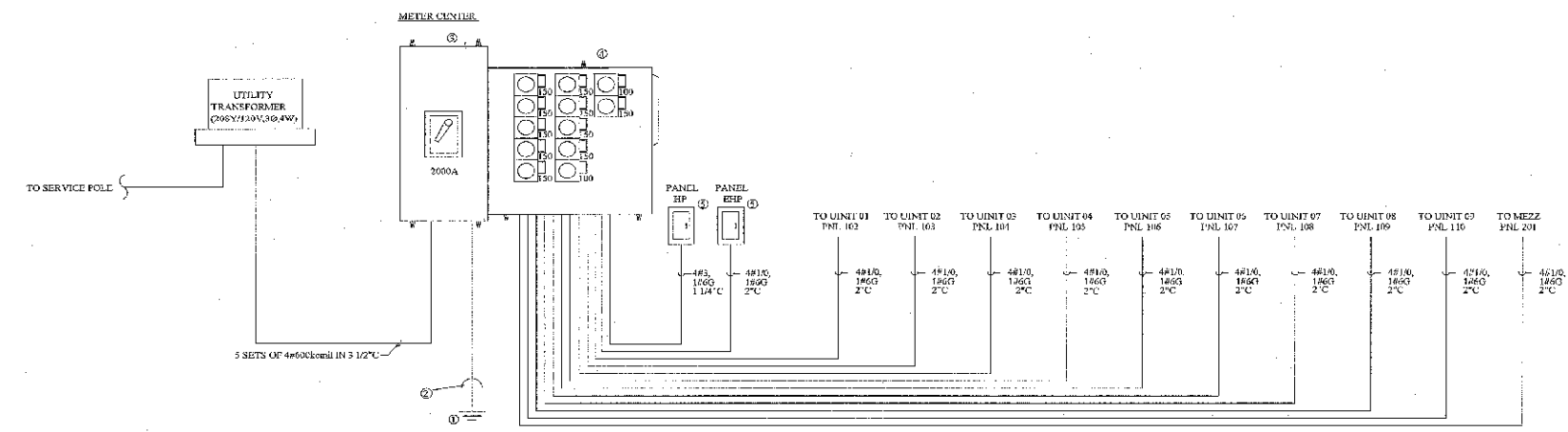
Northlake
Pavilion
Building #3
Metromall Hwy &
Stonville Rd
Charlotte, NC

PROJECT NO.: 05271-3
DATE: 08/21/07
DRAWN BY:
CHKD. BY:
PANEL
SCHEDULES

SHEET E302

REVISIONS:

- ① **GROUNDING ROD**
PROVIDE THREE 5/8" X 10' GROUND ROD. PROVIDE AN ADDITIONAL GROUND ROD IF RESISTANCE IS GREATER THAN 25 OHMS.
BOND GROUND CONDUCTOR WITH BUILDING STEEL AND MAIN WATER SUPPLY PIPE.
- ② **GROUNDING**
#3 AWG CATHODICALLY WELDED TO BUILDING STEEL AND IN COMING METAL WATER/GAS PIPING PER N.E.C. GROUNDING
(ART. 250). LOCAL UTILITY "MAIN SERVICE DISCONNECT SWITCH" SIZED IN ACCORDANCE WITH N.E.C. ARTICLE 250-30.
- ③ **MAIN SWITCHGEAR**
CONTRACTOR TO PROVIDE SQUARE D "E" METER-PAN-METER CENTER MAIN SECTION. SECTION SHALL BE RATED FOR
208Y/120V, 2000A NCH, 30, 4-WIRE IN A NEMA 3R ENCLOSURE. BREAKER SHALL BE 100% RATED AND WITH AN AFC
RATING OF 65,000 AMP. CONTACT LINGERER ON RECORD IF THE AVAILABLE FAULT CURRENT ON THE SECONDARY SIDE
OF THE TRANSFORMER IS GREATER THAN 65,000 AMP.
- ④ **METER CENTER**
CONTRACTOR TO PROVIDE 600V-175 METER CENTER BRANCH SECTION SECTION SHALL BE
RATED FOR 208Y/120V, 2000A, 30, 4-WIRE WITH 150A MAXIMUM BRANCH CIRCUIT CAPACITY.
- ⑤ **PANEL**
REFER TO SHEET E3.02 FOR HOUSE PANEL SPEC.



ELECTRICAL RISER DIAGRAM
NOT TO SCALE

WARNING
IT IS A VIOLATION OF THE LAW FOR ANY
PERSON, UNLESS ACTING UNDER THE
DIRECTION OF THE ARCHITECT, TO ALTER OR
REPRODUCE THESE DRAWINGS IN ANY WAY.



Buffalo, New York
MWT Architecture, P.C.
6399 Main Street - Suite 120
Williamsville, NY 14221
Ph: 716.631.0000 Fax: 631.2340

Charlotte, North Carolina
MWT Architecture, P.C.
529 Collier Alban Drive - Suite 200
Charlotte, NC 28262
Ph: 704.947.5777 Fax: 955.1524

Las Vegas, Nevada
MWT Architecture, P.C.
3733 Howard Hughes Parkway - Suite 200
Las Vegas, NV 89109
Ph: 702.365.5200 Fax: 784.7601

Washington, DC
MWT Architecture
1633 N. Fort Myer Drive - Suite 700
Arlington, VA 22209
Ph: 703.598.0206 Fax: 598.5254

GROUND FLOOR
ENGINEERING

JOB NO.: MAYK-03-37-MEP

Mohamed Chahat
El-Agouly, P.E.
N.C. Lic. No. 35292

Northlake Pavilion Building #3
Metronom Pkwy & Stateville Rd
Charlotte, NC

PROJECT NO. 05271-3
DATE: 08/21/07
DRAWN BY:
CHKD. BY:
ELECTRICAL RISER DIAGRAM
SHEET E303