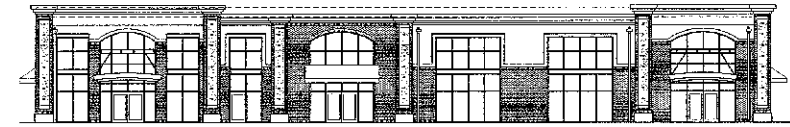


COMMERCIAL SHELL:

# NORTHLAKE PAVILION BLDG. #3

## 10624 METROMONT PARKWAY

### CHARLOTTE, NC 28269



REVISIONS:

**NORTHLAKE PAVILION, LLC**  
 10624 METROMONT PKWY  
 CHARLOTTE, NC 28269

CONTACT:

**JAKE PALILLO**  
 PROJECT MANAGER  
 PH: 704-363-7902  
 FAX: 704-895-5672  
 EMAIL: JPALILLO@AOL.COM



ARCHITECT OF RECORD:

**JAMES DARRIN WILLIAMS**  
 MWT ARCHITECTURE, P.C.  
 520 COLLINS AIKMAN DRIVE, SUITE 200  
 CHARLOTTE, NC 28262

CONTACT:

**BRIDGET HARTLE**  
 PROJECT MANAGER  
 PH: 704-947-9772 EX. 17  
 FAX: 704-595-1725  
 EMAIL: BRIDGET@MWTUSA.COM

### DRAWING INDEX

<b>CODE</b>	<b>DESCRIPTION</b>	<b>MECHANICAL</b>	
A000	CONCRETE	M001	GENERAL NOTES & LEGENDS
A001	BUILDING CODE SUMMARY	M101	DETAILS
A004	SPECIAL INSPECTIONS	M201	FIRST FLOOR MECHANICAL PLAN
A002	GENERAL NOTES	M202	M202 MECHANICAL PLAN
A005	LIFE SAFETY PLANS FIRST FLOOR	M203	ROOF MECHANICAL PLAN
A006	LIFE SAFETY PLANS SECOND FLOOR	M301	SCHEDULES
A005	ARCHITECTURAL SITE PLAN		
<b>STRUCTURAL</b>		<b>ELECTRICAL</b>	
S000	GENERAL NOTES	E001	GENERAL NOTES & LEGENDS
S101	FOUNDATION PLAN	E101	ELECTRICAL DETAILS
S201	SECOND FLOOR PLAN	E201	FIRST FLOOR ELECTRICAL PLAN
S601	SECTIONS	E202	M202 ELECTRICAL PLAN
		E501	LOAD CALCULATION
		E502	PANEL SCHEDULE
		E503	ELECTRICAL SCHEDULE
<b>MECHANICAL</b>		<b>FIRE PROTECTION</b>	
M000	FIRST FLOOR MECH PLAN	F001	GENERAL NOTES & LEGENDS & DETAILS
M100	SECOND FLOOR MECH PLAN	F101	FIRST FLOOR SMOKE DETECTOR PLAN
M200	ROOF MECH PLAN	F102	M202 SPRINKLER PLAN
<b>MECHANICAL</b>			
A-01	FIRST FLOOR PLAN		
A-02	SECOND FLOOR & ROOF PLANS		
A-03	ROOF PLAN		
A-04	FOUNDATION		
A-05	LEVELING DETAILS		
A-06	BUILDING SECTIONS		
A-07	WALL SECTIONS		
A-08	WALL SECTIONS		
A-09	SECTION DETAILS		
A-10	SECTION DETAILS		
A-11	SECTION DETAILS		
A-12	SECTION DETAILS		
A-13	SECTION DETAILS		
A-14	SECTION DETAILS		
A-15	SECTION DETAILS		
A-16	SECTION DETAILS		
A-17	SECTION DETAILS		
A-18	SECTION DETAILS		
A-19	SECTION DETAILS		
A-20	SECTION DETAILS		
A-21	SECTION DETAILS		
A-22	SECTION DETAILS		
A-23	SECTION DETAILS		
A-24	SECTION DETAILS		
A-25	SECTION DETAILS		
A-26	SECTION DETAILS		
A-27	SECTION DETAILS		
A-28	SECTION DETAILS		
A-29	SECTION DETAILS		
A-30	SECTION DETAILS		
A-31	SECTION DETAILS		
A-32	SECTION DETAILS		
A-33	SECTION DETAILS		
A-34	SECTION DETAILS		
A-35	SECTION DETAILS		
A-36	SECTION DETAILS		
A-37	SECTION DETAILS		
A-38	SECTION DETAILS		
A-39	SECTION DETAILS		
A-40	SECTION DETAILS		
A-41	SECTION DETAILS		
A-42	SECTION DETAILS		
A-43	SECTION DETAILS		
A-44	SECTION DETAILS		
A-45	SECTION DETAILS		
A-46	SECTION DETAILS		
A-47	SECTION DETAILS		
A-48	SECTION DETAILS		
A-49	SECTION DETAILS		
A-50	SECTION DETAILS		
A-51	SECTION DETAILS		
A-52	SECTION DETAILS		
A-53	SECTION DETAILS		
A-54	SECTION DETAILS		
A-55	SECTION DETAILS		
A-56	SECTION DETAILS		
A-57	SECTION DETAILS		
A-58	SECTION DETAILS		
A-59	SECTION DETAILS		
A-60	SECTION DETAILS		
A-61	SECTION DETAILS		
A-62	SECTION DETAILS		
A-63	SECTION DETAILS		
A-64	SECTION DETAILS		
A-65	SECTION DETAILS		
A-66	SECTION DETAILS		
A-67	SECTION DETAILS		
A-68	SECTION DETAILS		
A-69	SECTION DETAILS		
A-70	SECTION DETAILS		
A-71	SECTION DETAILS		
A-72	SECTION DETAILS		
A-73	SECTION DETAILS		
A-74	SECTION DETAILS		
A-75	SECTION DETAILS		
A-76	SECTION DETAILS		
A-77	SECTION DETAILS		
A-78	SECTION DETAILS		
A-79	SECTION DETAILS		
A-80	SECTION DETAILS		
A-81	SECTION DETAILS		
A-82	SECTION DETAILS		
A-83	SECTION DETAILS		
A-84	SECTION DETAILS		
A-85	SECTION DETAILS		
A-86	SECTION DETAILS		
A-87	SECTION DETAILS		
A-88	SECTION DETAILS		
A-89	SECTION DETAILS		
A-90	SECTION DETAILS		
A-91	SECTION DETAILS		
A-92	SECTION DETAILS		
A-93	SECTION DETAILS		
A-94	SECTION DETAILS		
A-95	SECTION DETAILS		
A-96	SECTION DETAILS		
A-97	SECTION DETAILS		
A-98	SECTION DETAILS		
A-99	SECTION DETAILS		
A-100	SECTION DETAILS		

**STEWART ENGINEERING (FORMALLY GNA)**  
 200 S. COLLEGE STREET, SUITE 720  
 CHARLOTTE, NC 28202

CONTACT:

**TERESA HAWKINS**  
 PH: 704-334-7925  
 FAX: 704-334-7926  
 EMAIL: THAWKINS@GNADESIGN.COM

**GROUND FLOOR ENG.**  
 10125 W. COLONIAL DRIVE, SUITE 212  
 OCOEE, FL 34761

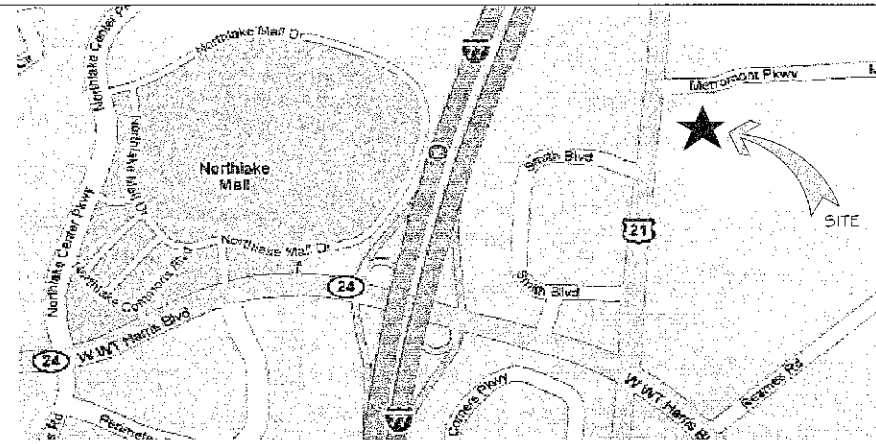
CONTACT:

**GARRY VERMAAS**  
 PH: 1-800-738-0525  
 FAX: 407-517-4140  
 EMAIL: GARRY@GROUNDFL.COM

**GROUND FLOOR ENG.**  
 10125 W. COLONIAL DRIVE, SUITE 212  
 OCOEE, FL 34761

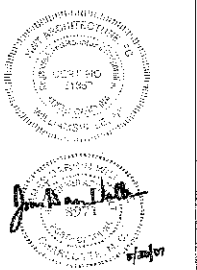
CONTACT:

**GARRY VERMAAS**  
 PH: 1-800-738-0525  
 FAX: 407-517-4140  
 EMAIL: GARRY@GROUNDFL.COM



### REVISION NOTES

WARNING:  
 IT IS A VIOLATION OF THE LAW FOR ANY  
 PERSON, UNLESS AT FIRST UNDER THE  
 SUPERVISION OF AN ARCHITECT, TO ALTER OR  
 REPRODUCE THESE DRAWINGS IN ANY WAY.



James Darrin Williams, P.C.  
 520 Collins Aikman Drive - Suite 200  
 Charlotte, NC 28262  
 PH: 704-947-9772 Fax: 704-595-1725

**Northlake Pavilion Building #3**  
 Metromont Parkway & Statesville Road  
 Charlotte, NC

PROJECT NO. 46271-3  
 DATE: 07/18/07  
 DRAWN BY: JRE  
 CHKD BY: JGW

COVER SHEET

SHEET A000