

1 FLOOR PLAN - ELECTRICAL
E1.1 SCALE: 1/8" = 1'-0"

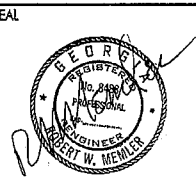
ELECTRICAL KITCHEN EQUIPMENT SCHEDULE

MARK	EQUIP.	AMPS	VOLTS	KW	NOTES
2S	UNDERCOUNTER REFRIG.	8.5a	115/1	1.3	CORD & PLUG
3S	SUSHI REFRIG.	3.0a	115/1	0.2	CORD & PLUG
4S	SMALL OVEN	-	115/1	1.5	BY OTHERS
5S	RICE WARMER	1a	115/1	0.1	CORD & PLUG
8S	UNDERCOUNTER REFRIG.	10.9a	115/1	1.3	CORD & PLUG
2B	BACK BAR REFRIG.	9.1a	115/1	1.2	CORD & PLUG
3B	SAKE WARMER	-	115/1	1.5	CORD & PLUG
4B	BLENDER	7.5a	115/1	0.9	CORD & PLUG
1W	SOUP WARMER	-	208/1	2.5	-
2W	TEA BREWER	-	115/1	1.4	CORD & PLUG
3W	COFFEE MAKER	-	115/1	1.4	CORD & PLUG
4W	ICE DISPENSER	-	115/1	1.0	CORD & PLUG
5W	MERCHANDISER	10.3a	115/1	1.3	CORD & PLUG
6W	ICE CREAM CABINET	6.5a	115/1	0.8	CORD & PLUG
7W	TEA DISPENSER	5.1a	208/1	0.7	CORD & PLUG
9W	ICE MAKER	18a	208/1	3.8	CORD & PLUG
1K	SANDWICH UNIT	8.6a	115/1	1.3	CORD & PLUG
10K	RICE COOKER	8.5a	115/1	1.3	CORD & PLUG
13K	HEAT LAMP	8.4a	115/1	1.0	CORD & PLUG
14K	BLENDER	15a	115/1	1.7	-
15K	FOOD PROCESSOR	9.0a	115/1	1.3	CORD & PLUG
16K	MICROWAVE	17.8a	115/1	1.2	CORD & PLUG NEMA 5-20R
18K	WALK-IN COOLER	9.4a	208/1	2.0	JB @ COND.
	WALK-IN FREEZER	22.3a	208/1	4.6	JB @ COND.
19K	HOOD	-	-	-	-
24K	DISHWASHER	3.9a	115/1	-	CORD & PLUG

SERVICE	KW	CKT NO.	80	a	b	c	60	CKT NO.	KW	SERVICE
WALK-IN FREEZER - ITEM #18K	4.6	1						2	2.0	WALK-IN COOLER - ITEM #18K
		3						4		
ICE MACHINE - ITEM #9W	3.8	5						6	2.5	SOUP WARMER - ITEM #1W
		7						8		
TEA DISPENSER - ITEM #7W	0.7	9						10	2.4	DISHWASHER - ITEM #24K
		11						12		
RECEPTACLE - ITEM #2S	1.3	13						14	0.8	RECEPTACLE - ITEM #6W
RECEPTACLE - ITEM #2S,4S	1.2	15						16	1.4	RECEPTACLE - ITEM #2W
RECEPTACLE - ITEM #5S,8S	1.4	17						18	1.4	RECEPTACLE - ITEM #2W
RECEPTACLE - ITEM #5W	1.3	19						20	1.4	RECEPTACLE - ITEM #3W
RECEPTACLE - ITEM #2S	1.3	21						22	1.0	RECEPTACLE - ITEM #4W
RECEPTACLE - ITEM #3S,5S	0.8	23						24	1.5	RECEPTACLE - ITEM #10K
RECEPTACLE - ITEM #1K	1.3	25						26	1.5	RECEPTACLE - ITEM #10K
RECEPTACLE - ITEM #2B	1.2	27						28	1.0	RECEPTACLE - ITEM #13K
RECEPTACLE - ITEM #2B	1.2	29						30	1.7	RECEPTACLE - ITEM #15K
RECEPTACLE - ITEM #4B	0.9	31						32	1.2	RECEPTACLE - ITEM #16K
RECEPTACLE - ITEM #4B	0.9	33						34	1.2	RECEPTACLES
RECEPTACLE - ITEM #3B	1.5	35						35	1.2	RECEPTACLES
RECEPTACLES	1.2	37						38	1.2	RECEPTACLES
RECEPTACLES	1.2	39						40	1.2	RECEPTACLES
		41						42	1.2	RECEPTACLES

PANEL SCHEDULE B
SERVICE 208/120v, 3Ø, 4W
MAINS 225A MLO
BRANCHES: 20A OR AS NOTED
PANEL MOUNTING: SURFACE
CONNECTED LOAD: 52KW
DEMAND LOAD: 52KW
PANEL RATING - 22,000AIC
SERVICE CONDUCTORS: #43/0 THHN, #6, 2°C

ADC Architectural Design Concepts, LLC
Architecture | Planning | Interiors
661 Dunwoody Place, Suite 102
Smyrna, GA 30330
Office: (404) 387-2222 Fax: (404) 387-2224
www.adc-architect.com
This drawing is the property of the Architectural Design Concepts and is not to be reproduced or copied in whole or in part. It is to be used only for the project and site specified herein, and is not to be used by any other consultant or on any other project. This drawing is to be returned to Architectural Design Concepts upon request.



REVISIONS

No.	Date	Description

PRINTING

Date	Description

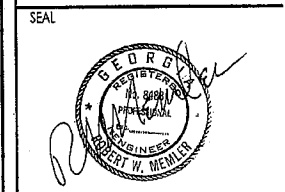
NIKKO JAPANESE RESTAURANT
LAND LOT 116, 7TH DISTRICT
FAYETTE COUNTY, GEORGIA
CLIENT: GIL Y. HAN | 3863 CAYTON BLVD. CHATTANOOGA, TN 37415

KEY PLAN
DATE: MARCH 20, 2007
DRAWN: RWM
CHECKED: RWM
JOB NO.: DS0502

TITLE: FIRST FLOOR PLAN
ELECTRICAL
SCHEDULES & DETAILS
SHEET NUMBER: **E1.1**

RPM Engineering, Inc.
350 Wexford Glen
Roswell, Ga. 30075
(770) 998-6102
FAX (770) 998-6119

To Order Plans Go To WWW.LDIREPRO.COM



REVISIONS

No.	Date	Description

PRINTING

Date	Description

NIKKO JAPANESE RESTAURANT
 LAND LOT 116, 7TH DISTRICT
 FAYETTE COUNTY, GEORGIA

CLIENT: GIL Y. HAN | 3953 CAYTON BLVD. CHATTANOOGA, TN 37415

KEY PLAN

DATE: MARCH 20, 2007
 DRAWN: RWM
 CHECKED: RWM
 JOB NO.: DS0502

TITLE: FIRST FLOOR PLAN
 LIGHTING
 SCHEDULES & DETAILS
 SHEET NUMBER: **E1.2**

RPM Engineering, Inc.
 350 Wexford Glen
 Roswell, Ga. 30075
 (770) 998-6102
 FAX (770) 998-6119

MARK	SYMBOL	MFG. & MODEL NO.	LAMPS	MOUNTING	REMARKS
A	□	LITHONIA 2GT-332-A12125- 120-GEB	(3) 32W T8	CEILING - "T" BAR	PRISMATIC DIFFUSER
B	⊙	COOPER ER712	(1) 75W PAR30	CEILING - RECESSED	W/ E1700ATNB
C	⊙	COOPER ER704	(1) 75W PAR30	CEILING - RECESSED	W/ E1700AUAT
D	⊙	CAMBRIA 230BK	(1) 50W MR16	IN FLOOR	UP LIGHT
E	—○—	LITHONIA C232 277 ES	(2) 32W T8	CEILING - SURFACE	IN COVE
F	—○—	COOPER LZR402P	(1) 50W MR16	CEILING - SURFACE	12V, EXTEND HEAD TO 8'-0" AFF
G	—○—	COOPER LZR1338MB	(1) 150W PAR 38	CEILING - SURFACE	W/ 3'-0" EXTENSION LVZ1036MB
H	—○—	COOPER LZR1338MB	(1) 150W PAR 38	WALL	11'-6" IN DINING, 12'-6" IN BAR
J	—○—	COOPER LZR1338MB	(1) 150W PAR 38	WALL @ 1'-0"	BOTTOM OF CONCRETE WALL
K	⊙	VISA OW1048-2N40-120-VG	(1) 75W PAR 38	WALL @ 8'-0" AFF	-
L	⊙	LITHONIA 7100 300Q WFL KM JB BL LC 120	(1) 300W QUARTZ	IN GRADE	WIDE FLOOD
M					
	▽	LITHONIA 6ELM2 120/277		WALL @ 7'-0"	CONNECT TO NEAREST LIGHT CIRCUIT AHEAD OF ANY DISCONNECT DEVICES (NEC ARTICLE 700.12(E))
	▽	LITHONIA LHQM SWIR 120/277 N		WALL @ 7'-0"	

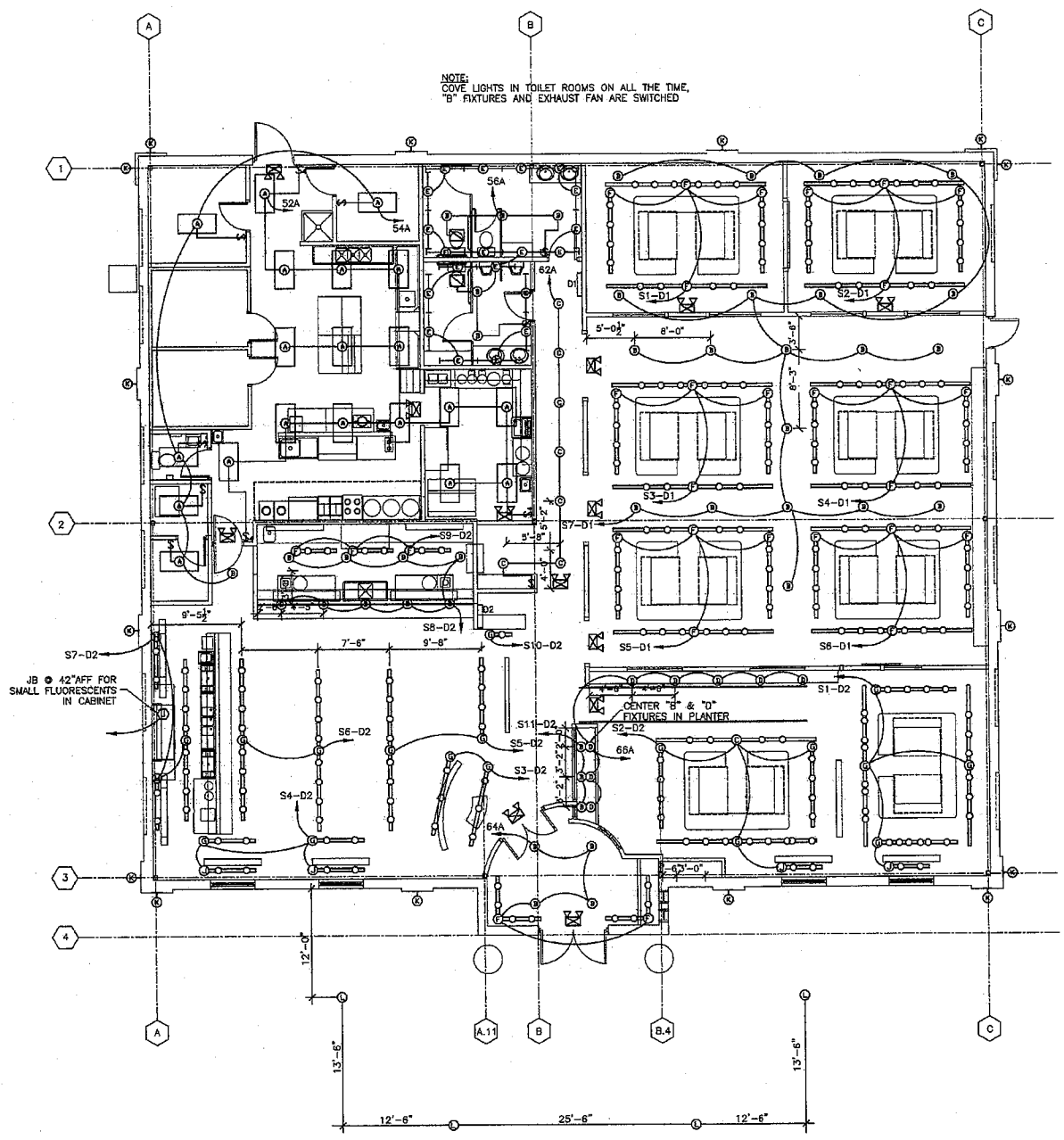
SERVICE	KW	CKT NO.	60	0	b	c	60	CKT NO.	KW	SERVICE
S1-D1	0.9	1	2	1.1	S1-D2					
S2-D1	0.9	3	4	1.1	S2-D2					
S3-D1	0.9	5	6	0.9	S3-D2					
S4-D1	0.9	7	8	1.2	S4-D2					
S5-D1	0.9	9	10	1.8	S5-D2					
S6-D1	0.9	11	12	1.8	S6-D2					
S7-D1	1.5	13	14	1.8	S7-D2					
			15	1.8	S8-D2					
			16	1.1	S9,10,11-D2					
			17							
			18							
			19							
			20							
			21							
			22							
			23							
			24							

PANEL SCHEDULE C
 SERVICE 120/208V, 3ϕ, 4W
 MAINS 225A MLO
 BRANCHES: 20A OR AS NOTED
 PANEL MOUNTING: SURFACE

CONNECTED LOAD: 20KW
 DEMAND LOAD: 25KW
 PANEL RATING - 22,000AIC
 SERVICE CONDUCTORS: 4#1 THHN, #86, 1 1/4"

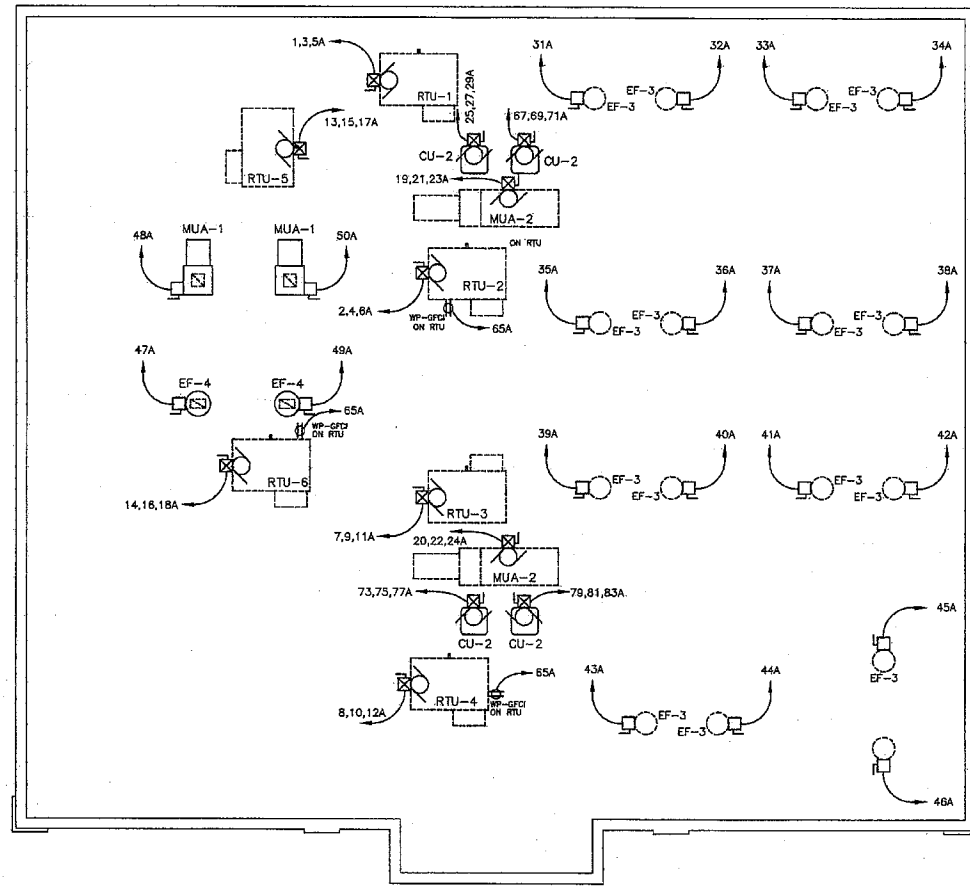
PROVIDE A CIRCUIT DIRECTORY AS REQUIRED IN SECTION 408.4 OF THE 2005 NEC.

- LEGEND**
- ⊕ DUPLEX RECEPTACLE
 - ⊕ QUAD RECEPTACLE
 - ⊙ 220V, 1ϕ OUTLET
 - ▽ TELEPHONE OUTLET
 - ▽ TELEPHONE/DATA OUTLET
 - ▽ DATA OUTLET
 - ⊙ LIGHTING FIXTURE
 - ⊙ SWITCH LEG (W/ 3-WAY DESIGNATION)
 - HOME RUN CIRCUIT
 - ⊕ FUSED DISCONNECT SWITCH
 - ⊕ DISCONNECT SWITCH
 - ⊕ ELECTRIC PANEL
 - GFCI GROUND FAULT CURRENT INTERRUPTER
 - ⊙ JUNCTION BOX
 - ⊕ LIGHT RHEOSTATS (D1 OR D2)
 - S1-D1 SWITCH NUMBER IN RHEOSTAT PANEL



1 FLOOR PLAN - LIGHTING
 E1.2 SCALE: 1/8" = 1'-0"

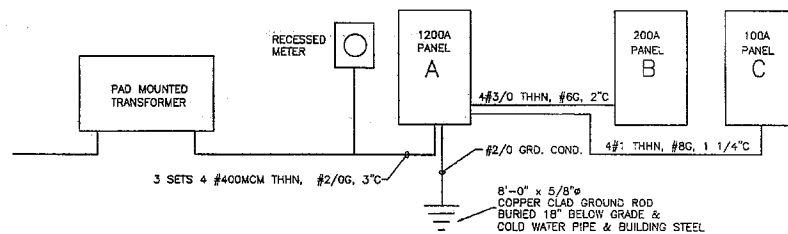
To Order Plans Go To WWW.LDIREPRO.COM



1 ROOF PLAN - ELECTRICAL
E2.1 SCALE: 1/8" = 1'-0"

ELECTRICAL NOTES:

- Do not scale these drawings. Refer to Architectural drawings for exact location of all equipment and confirm w/ Owner's Representative. These drawings are diagrammatic and the Electrical Contractor is responsible for the system to be in complete proper working order. This Contractor shall co-ordinate his work with other trades to avoid interferences and delays in construction.
- All work shall be done in accordance with the National Electric Code and all local codes and ordinances.
- Minimum wire size shall be #12awg excluding control wire unless otherwise noted. All conductors to be copper with THW insulation unless noted.
- Outlet boxes to be pressed steel in dry locations, cast alloy w/ threaded hubs in wet locations and special enclosures where required by code.
- Disconnect switches shall be horsepower rated, heavy duty, quick-made, quick break enclosures.
- Motor starters shall be manual or magnetic as noted w/ overload relays on each leg.
- Electrical shall be effectively and properly grounded as per the NEC.
- All equipment shall be new and bear the Underwriters Label where applicable.
- All work shall be performed by a licensed Electrical Contractor in a first class workmanlike manner.
- The electrical system shall be complete, fully operative and guaranteed for a period of one year from the date of acceptance by the architect/engineer.
- The Contractor shall pay all fees, permits, inspections, testing and maintain all required insurance.
- The Mechanical Contractor shall furnish all motor starters and/or disconnect switches for condensing units or RTU's to the Electrical Contractor for his installation. The Mechanical Contractor shall be responsible for all control wiring. The Electrical Contractor shall provide all other starters and disconnects and coordinate with the Mechanical Contractor for connections.
- All conduits, underground or below slab shall be 3/4" rigid steel or schedule 40 PVC. Above slab EMT may be used where allowed by code and free from potential damage.
- All circuit breakers, two or three pole, to be common trip. No tie handles or tandems will be accepted.
- All fuses unless otherwise noted shall be current limiting fuse (CLF) rated for 200,000 A.I.C.
- Roof top air conditioning units to be provided with a 125v, 20A receptacle. The Electrical Contractor shall provide and install on the A/C roof top units as per NEC 210-63.



2 RISER DIAGRAM
E-3 NO SCALE

MECHANICAL EQUIPMENT CONNECTION SCHEDULE

TAG	DESCRIPTION	LOCATION	KW	VOLT	PH	FLA	SERVED FROM	CIRCUIT #	FEEDER	MOCP
RTU-1-4	ROOF TOP UNITS #1-4	ON ROOF	19.9	208	3	55.3	PANEL "A"	1,3,5A 2,4,6A 7,9,11A 6,10,12A	4#4 & 1 #8 GND. IN 3/4" RGS C.	70A/3P HACR
RTU-5	ROOF TOP	ON ROOF	24.0	208	3	66.6	PANEL "A"	13,15,17A	4#3 & 1 #8 GND. IN 3/4" RGS C.	80A/3P HACR
RTU-6	ROOF TOP	ON ROOF	21.2	208	3	59.0	PANEL "A"	14,16,18A	4#4 & 1 #8 GND. IN 3/4" RGS C.	70A/3P HACR
EF-3	EXHAUST FAN 1/2hp (16 REQ'D)	ON ROOF	2.4	120	1	11	PANEL "A"	51,52,53A 54,55,56A 57,58,59A 60,61,62A	3 #8 & 1 #10 GND. IN 3/4" RGS C.	20A/1P HACR
EF-4	EXHAUST FAN #4 3/4hp (2 REQ'D)	ON ROOF	1.6	120	1	13	PANEL "A"	47A 48A	2 #12 & 1 #12 GND. IN 3/4" RGS C.	20A/1P HACR
MUA-1	MAKE-UP AIR 1/2hp (2 REQ'D)	ON ROOF	1.4	120	1	6.0	PANEL "A"	48A 50A	2 #12 & 1 #12 GND. IN 3/4" RGS C.	20A/1P HACR
MUA-2	MAKE-UP AIR (2 REQ'D)	ON ROOF	4.0	208	3	14	PANEL "A"	19,21,23A 20,22,24A	2 #12 & 1 #12 GND. IN 3/4" RGS C.	30A/3P HACR
CU-2	STON COND. UNIT (4 REQ'D)	ON ROOF	7.8	208	3	27	PANEL "A"	25,27,28A 67,69,71A 73,75,77A 79,81,83A	2 #12 & 1 #12 GND. IN 3/4" RGS C.	45A/3P HACR

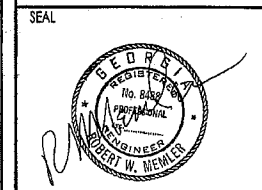
SERVICE	KW	DKT NO.	a	b	c	DKT NO.	KW	SERVICE
RTU-1	21.2	1	70	71	72	2	21.2	RTU-2
RTU-3	21.2	7	73	74	75	8	24.0	RTU-4
RTU-5	21.2	13	76	77	78	14	9.7	RTU-6
MUA-2 (5hp)	4.0	19	79	80	81	20	4.0	MUA-2 (5hp)
CU-2	7.8	25	82	83	84	26	52	PANEL "B" 4#3/0 THHN, #66, 2°C
EF-3 (1/2hp)	1.0	31	85	86	87	32	1.0	EF-3 (1/2hp)
EF-3 (1/2hp)	1.0	33	88	89	90	34	1.0	EF-3 (1/2hp)
EF-3 (1/2hp)	1.0	35	91	92	93	36	1.0	EF-3 (1/2hp)
EF-3 (1/2hp)	1.0	37	94	95	96	38	1.0	EF-3 (1/2hp)
EF-3 (1/2hp)	1.0	39	97	98	99	40	1.0	EF-3 (1/2hp)
EF-3 (1/2hp)	1.0	41	100	101	102	42	1.0	EF-3 (1/2hp)
EF-3 (1/2hp)	1.0	43	103	104	105	44	1.0	EF-3 (1/2hp)
EF-3 (1/2hp)	1.0	45	106	107	108	46	0.8	EF-3 (1/2hp)
EF-4 (1/2hp)	0.6	47	109	110	111	48	0.8	MUA-1 (1/2hp)
EF-4 (1/2hp)	0.6	49	112	113	114	50	0.8	MUA-1 (1/2hp)
RECEPTACLES-IG	1.2	51	115	116	117	52	1.5	LIGHTS-KITCHEN
RECEPTACLES-IG	1.2	53	118	119	120	54	0.8	LIGHTS-KITCHEN
RECEPTACLES-IG	1.2	55	121	122	123	56	1.1	LIGHTS-TOILETS
RECEPTACLES	1.2	57	124	125	126	58	1.2	LIGHTS-"K" FIXTURES
RECEPTACLES	1.2	59	127	128	129	60	1.2	LIGHTS-"L" FIXTURES
RECEPTACLES	1.2	61	130	131	132	62	0.8	LIGHTS-CORRIDOR
RECEPTACLES	1.2	63	133	134	135	64	1.0	LIGHTS-ENTRANCE
RECEPTACLES-ON RTU'S	1.2	65	136	137	138	66	0.8	LIGHTS-PLANTERS
CU-2	7.8	67	139	140	141	68	25	PANEL "C"
CU-2	7.8	69	142	143	144	70		
CU-2	7.8	71	145	146	147	72		
CU-2	7.8	73	148	149	150	74		
CU-2	7.8	75	151	152	153	76		
CU-2	7.8	77	154	155	156	78		
CU-2	7.8	79	157	158	159	80		
CU-2	7.8	81	160	161	162	82		
CU-2	7.8	83	163	164	165	84		

PANEL SCHEDULE A
SERVICE 208/120v, 3A, 4W
MAINS 1000A MAIN CB
BRANCHES: 20A OR AS NOTED
PANEL MOUNTING: SURFACE

CONNECTED LOAD: 272KW
DEMAND LOAD: 183KW
PANEL RATING - 22,000AIC
SERVICE CONDUCTORS: (3) SETS 4#400MCM THHN, #2/0G, 3°C

ADC Architectural Design Concepts, LLC
Architecture | Planning | Interiors
801 Overwoody Pkwy, Suite 102
Suwanee, Georgia 30086
Office: (770) 587-2255 Fax: (770) 587-2224
www.adc-architect.com

This drawing is the property of the Architectural Design Concepts and is not to be reproduced or copied in whole or in part. It is to be used only for the project and site specified herein, and is not to be used by any other consultant or on any other project. This drawing is to be returned to Architectural Design Concepts upon request.



REVISIONS

No.	Date	Description

PRINTING

Date	Description

NIKKO JAPANESE RESTAURANT
LAND LOT 116, 7TH DISTRICT
FAYETTE COUNTY, GEORGIA

CLIENT: GIL Y. HAN | 3953 CAYTON BLVD. CHATTANOOGA, TN 37415

KEY PLAN

DATE: MARCH 20, 2007
DRAWN: RWM
CHECKED: RWM
JOB NO.: DS0502

TITLE: ROOF PLAN
ELECTRICAL
SCHEDULES & DETAILS

SHEET NUMBER: E2.1

RPM Engineering, Inc.
350 Wexford Glen
Roswell, Ga. 30075
(770) 998-6102
FAX (770) 998-6119

To Order Plans Go To WWW.LDIREPRO.COM