

PLAT REVISED 04/18/07
THIS PLAT REFLECTS ELEVATIONS ON 04/13/07

RECORDING NOTES:
1. In no event shall this plat of survey be construed as a warranty of title.
2. Any conditions, restrictions or easements shown on this plat are subject to the public records, easements, appurtenances and other documents affecting the land.
3. The Surveyor and Associates and the Land Surveyor shall not be held liable for any errors or omissions which may occur in the preparation of this plat.

SURVEY FOR: BRANTLEY COUNTY BOARD OF EDUCATION

AREA	LAND LOT	LAND DIST.	COUNTY	STATE	DATE
				GA	04/13/07

The field data upon which this plat is based has a closure precision of one foot in _____ feet and an angular error of _____ per angle point, and was adjusted using _____ rule. This plat has been calculated for closure and has been found to be accurate within one foot in _____ feet.

This plat has been recorded in Plat Book _____ Page _____ in the office of the Clerk of the Superior Court of _____ County, Georgia this _____ day of _____ 20__.

CLERK OF SUPERIOR COURT

MERLIN J. TOMBERLIN
ASSOC.
2003 DOLAN ISLES WEST
DALLAS, GEORGIA 31518
PH: (912) 427-8882 or (912) 467-9210
MERLIN J. TOMBERLIN, GEORGIA P.L.S. 8877

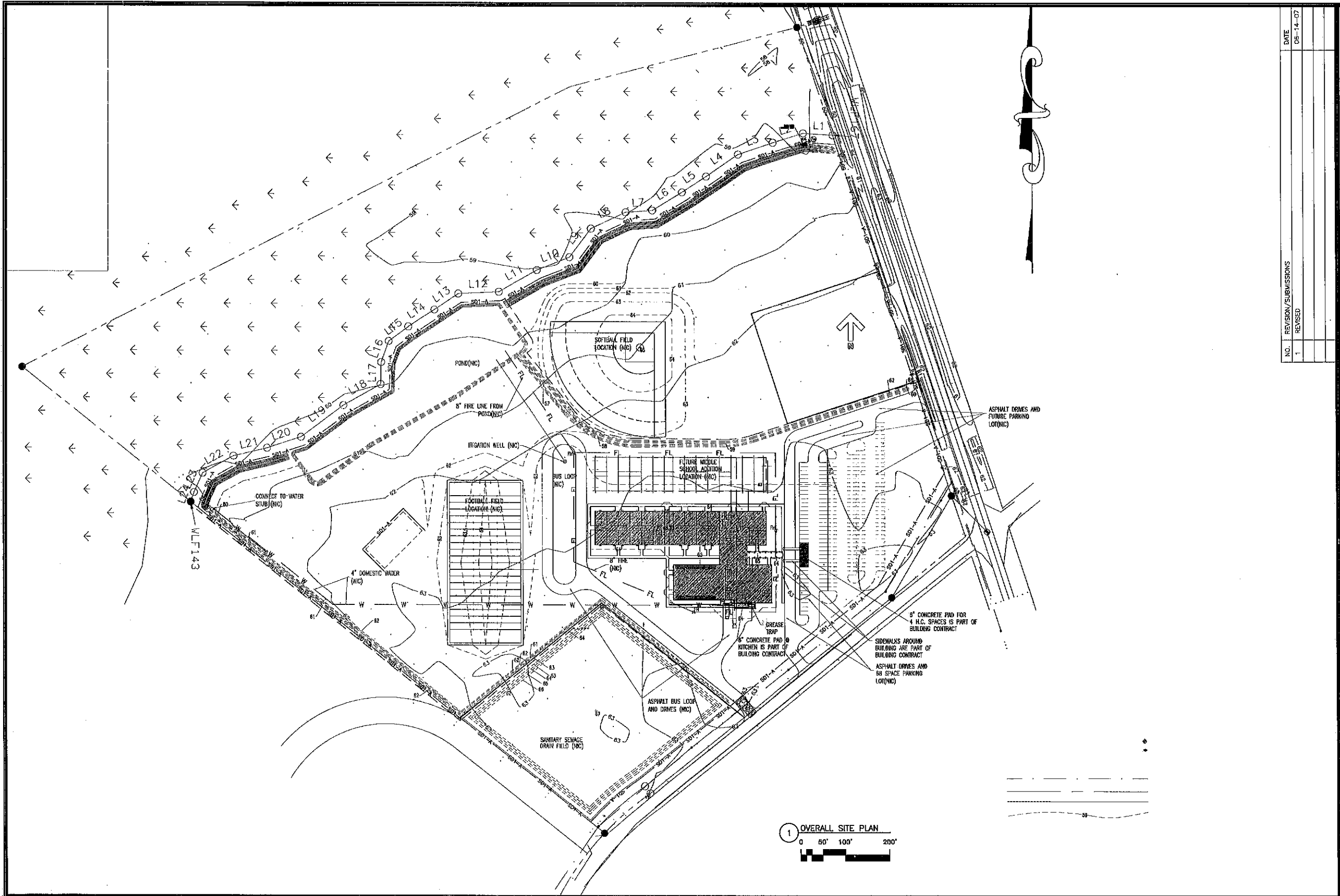
Engineers Seal

Architects Seal

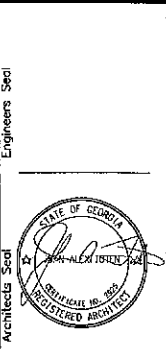
JOHN A. TUTEN & ASSOCIATES
ARCHITECTS
1316 NEWCASTLE STREET
BRUNSWICK, GEORGIA 31520

PROJECT # SA01S-013-179
NEW WAYNESVILLE UPPER ELEMENTARY SCHOOL
For The BRANTLEY COUNTY BOARD OF EDUCATION
NAHUNTA, GEORGIA 31553
Drawing Title TOPOGRAPHICAL SURVEY

Drawn	Checked	Project No.	Date
		0511	
CAD File No.	143		
Drawing No.	TP000		



NO.	REVISION/SUBMISSIONS	DATE
1	REVISED	06-14-07

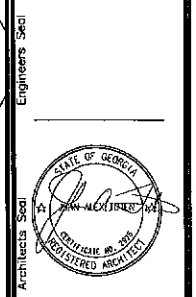
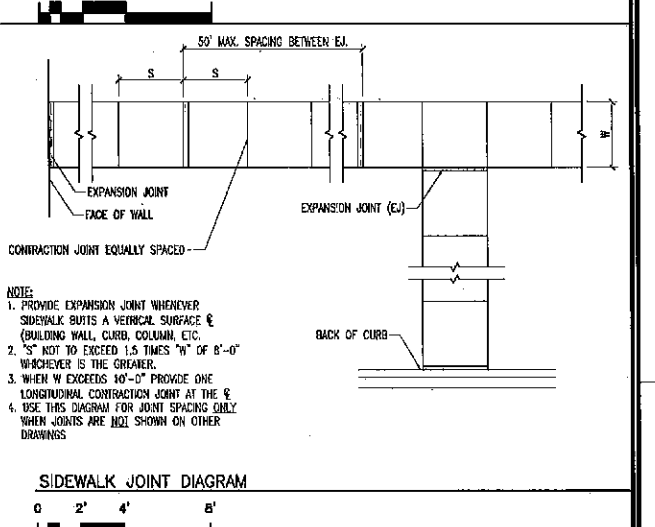
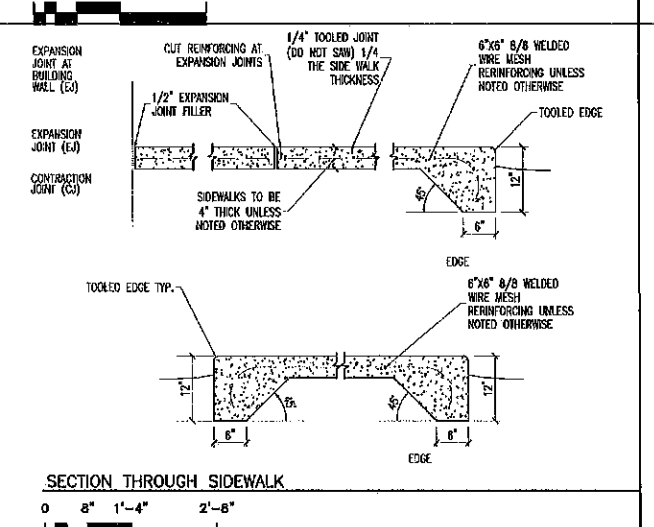
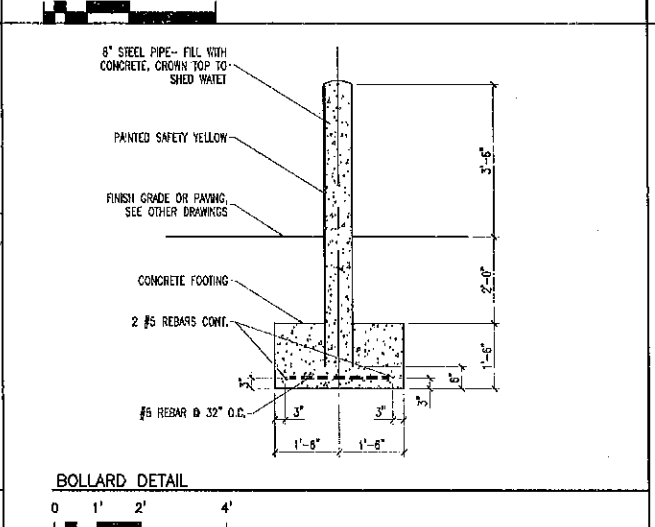
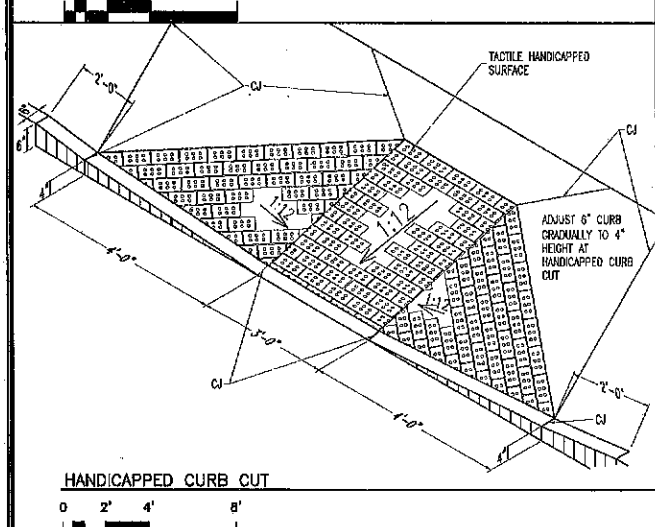
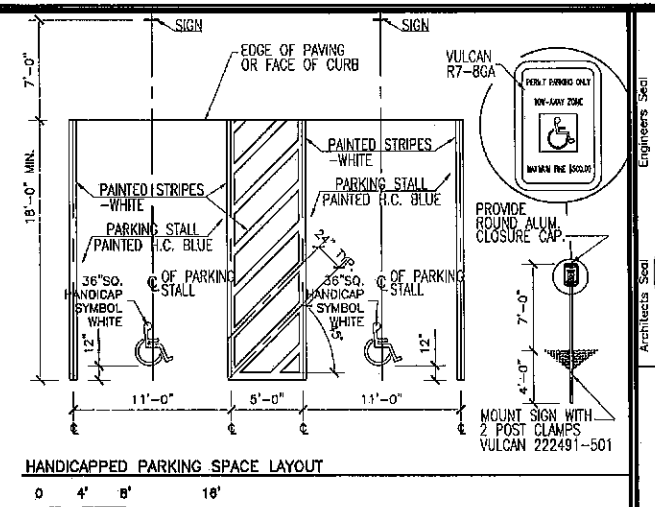
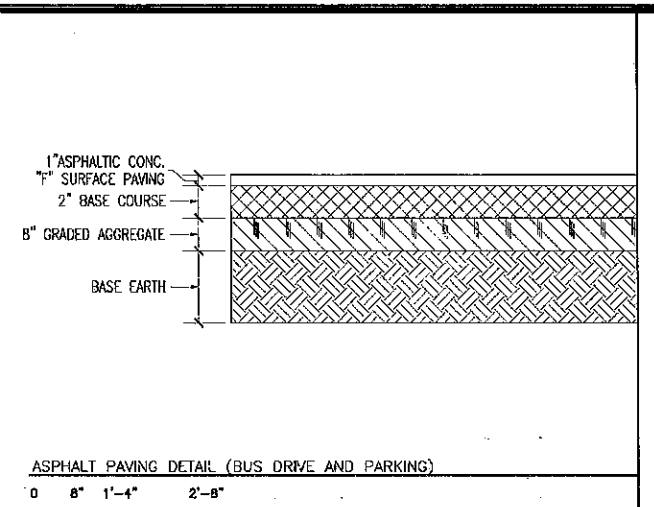
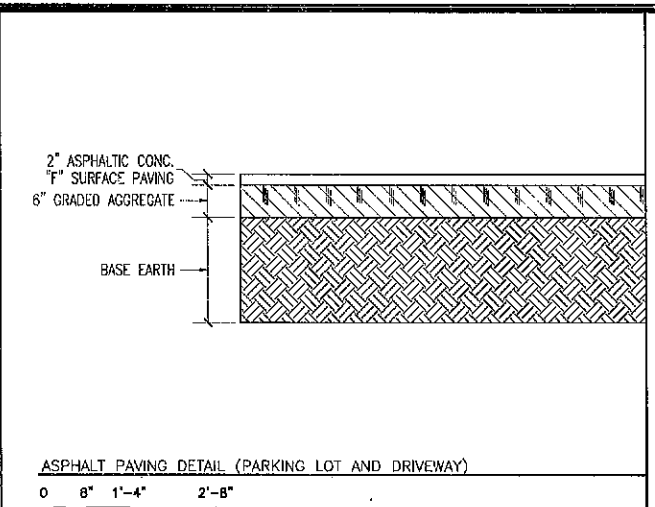
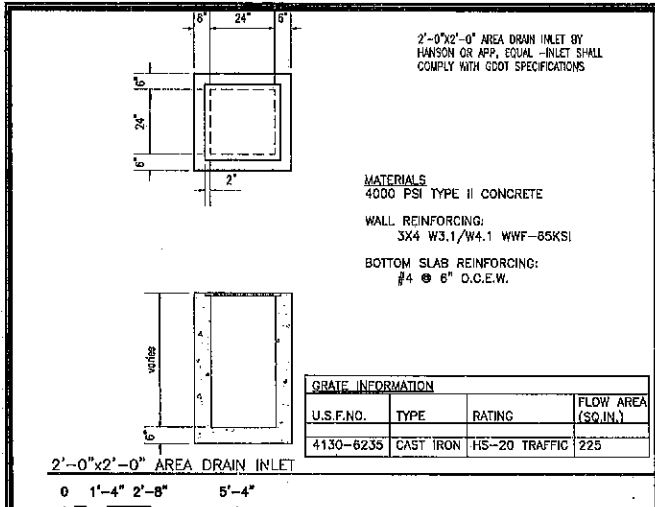


JOHN A. TUTEN & ASSOCIATES
 ARCHITECTS
 1316 NEWCASTLE STREET
 BRUNSWICK, GEORGIA 31520

PROJECT # SA015-613-179
 NEW WAYNESVILLE UPPER ELEMENTARY SCHOOL
 For The BRANTLEY COUNTY BOARD OF EDUCATION
 NAHUNTA, GEORGIA 31553
 FTE 450
 Drawing Title OVERALL SITE PLAN

Drawn	Checked	Project No.	Date
		0511	
CAD File No.		Drawing No.	
143		C000	

C000



JOHN A. TUTEN & ASSOCIATES
 ARCHITECTS
 1316 NEWCASTLE STREET
 BRUNSWICK, GEORGIA 31520

PROJECT # SA01S-613-179
 NEW WAYNESVILLE UPPER ELEMENTARY SCHOOL
 For The BRANTLEY COUNTY BOARD OF EDUCATION
 NAHUNTA, GEORGIA 31553
 Drawing Title: SITE DETAILS

Drawn	Checked	Project No.	Date
		0511	
CAD File No.		Drawing No.	
143		C002	

C002