

ADDENDUM NO. 2
John A. Tuten & Associates, Inc.
1316 Newcastle Street
Brunswick, Georgia 31520

August 30, 2007

PROJECT MANUAL

1. Section 13125 Metal Building Systems

- a. At Part 2.1 A: Add (7.) CECO Building Systems as an approved manufacturer pending compliance with the contract documents.

DRAWINGS

1. P-202

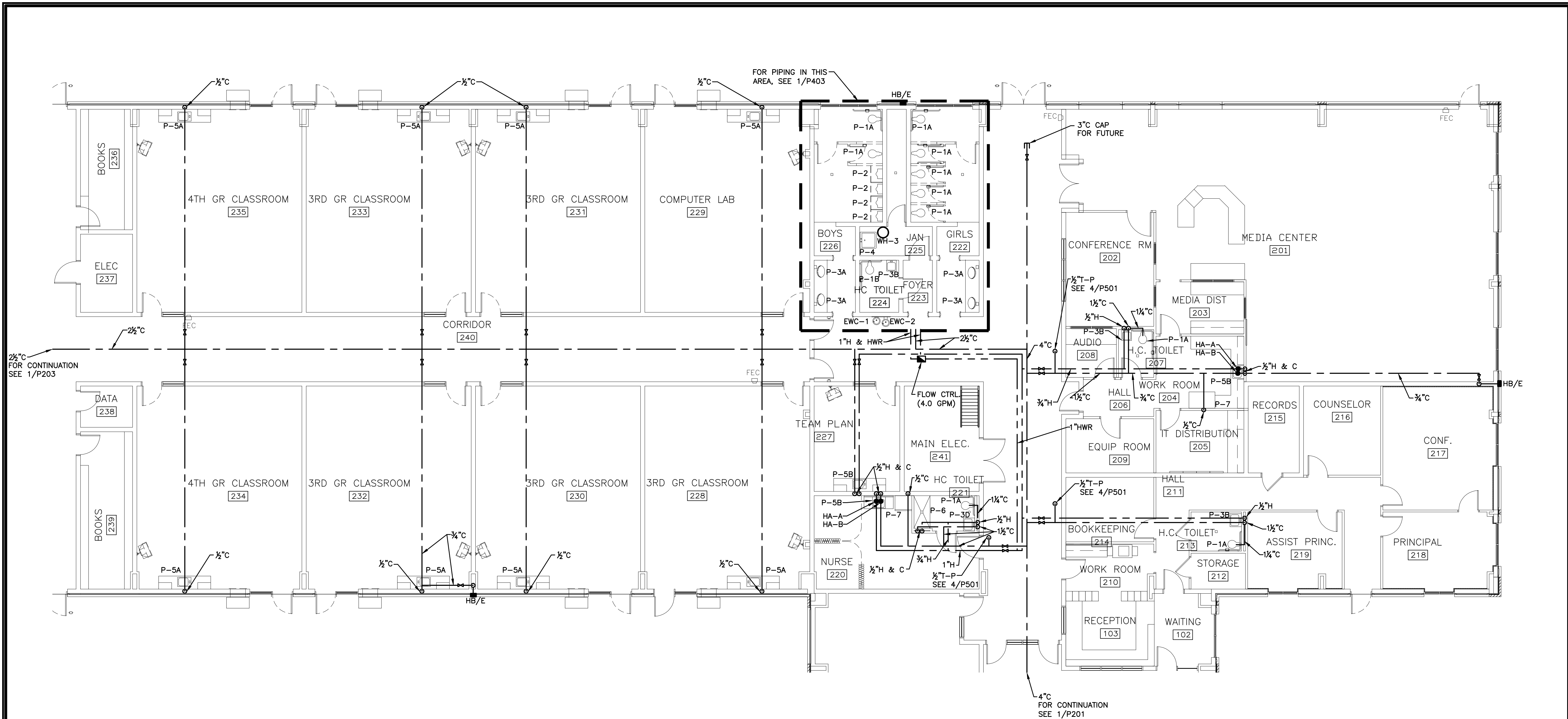
- a. Insert attached drawing P202 – Hot & Cold Water Floor Plan 2 that was left out of set.

END OF ADDENDUM NO. 2

0511/160/Add#2

SCREVEN COUNTY HIGH SCHOOL
Addendum No. 2
Date August 30, 2007
Page 2 of 2

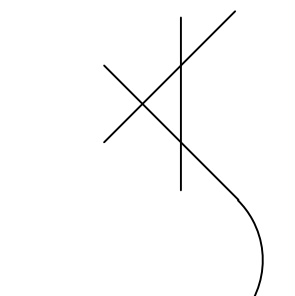
0511\160\ADD#1



1 HOT & COLD WATER FLOOR PLAN 2
 P202 SCALE: 1/8" = 1'-0"



Engineers Seal



Architects Seal
 JOHN A. TUTEN & ASSOCIATES
 ARCHITECTS
 1316 NEWCASTLE STREET
 BRUNSWICK, GEORGIA 31520

PROJECT # SA01S-613-179
 NEW WAYNESVILLE UPPER ELEMENTARY SCHOOL
 For The BRANTLEY COUNTY BOARD OF EDUCATION
 NAHUNTA, GEORGIA 31553 FTE 450
 Drawing Title HOT & COLD WATER FLOOR PLAN 2

Drawn JGB	Checked CCS	Project No. 0511	Date 06-23-07
CAD File No. 20071008-P202.dwg		Drawing No.	



P202