

CB 252366

BRANTLEY CO. NEW WAYNESVILLE UPPER ELEMENTARY SCHOOL

B: 9
19

ADDENDUM NO. 2
John A. Tuten & Associates, Inc.
1316 Newcastle Street
Brunswick, Georgia 31520

August 30, 2007

PROJECT MANUAL

1. Section 13125 Metal Building Systems

- a. At Part 2.1 A: Add (7.) CECO Building Systems as an approved manufacturer pending compliance with the contract documents.

DRAWINGS

1. P-202

- a. Insert attached drawing P202 – Hot & Cold Water Floor Plan 2 that was left out of set.

END OF ADDENDUM NO. 2

0511/160/Add#2

SCREVEN COUNTY HIGH SCHOOL

Addendum No. 2

Date August 30, 2007

Page 2 of 2

0511\160\ADD#1



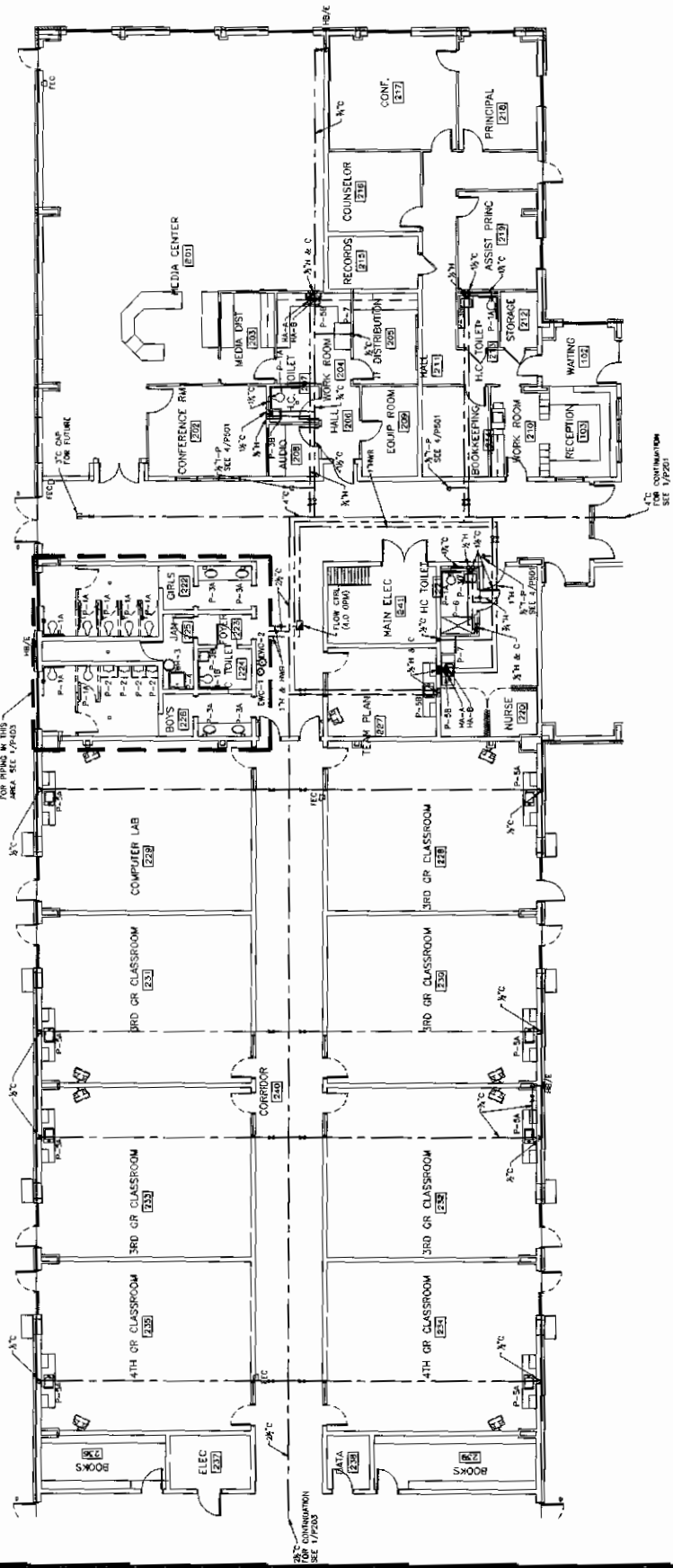
ARCHITECTS SEAL

JOHN A. TUTEN & ASSOCIATES
ARCHITECTS
1316 NEWCASTLE STREET
BRUNSWICK, GEORGIA 31520

PROJECT # SA018-613-179
NEW WAYNESVILLE UPPER ELEMENTARY SCHOOL
FOR THE BRANTLEY COUNTY BOARD OF EDUCATION
NAHUNTA, GEORGIA 31553
FTE 450
HOT & COLD WATER FLOOR PLAN 2

0511
Drawing No.
Project No.
Date: 08-22-07
Drawing No. 200711008-P202.dwg
Drawing No.

P202



1 HOT & COLD WATER FLOOR PLAN 2
P202/SCALE: 1/8" = 1'-0"