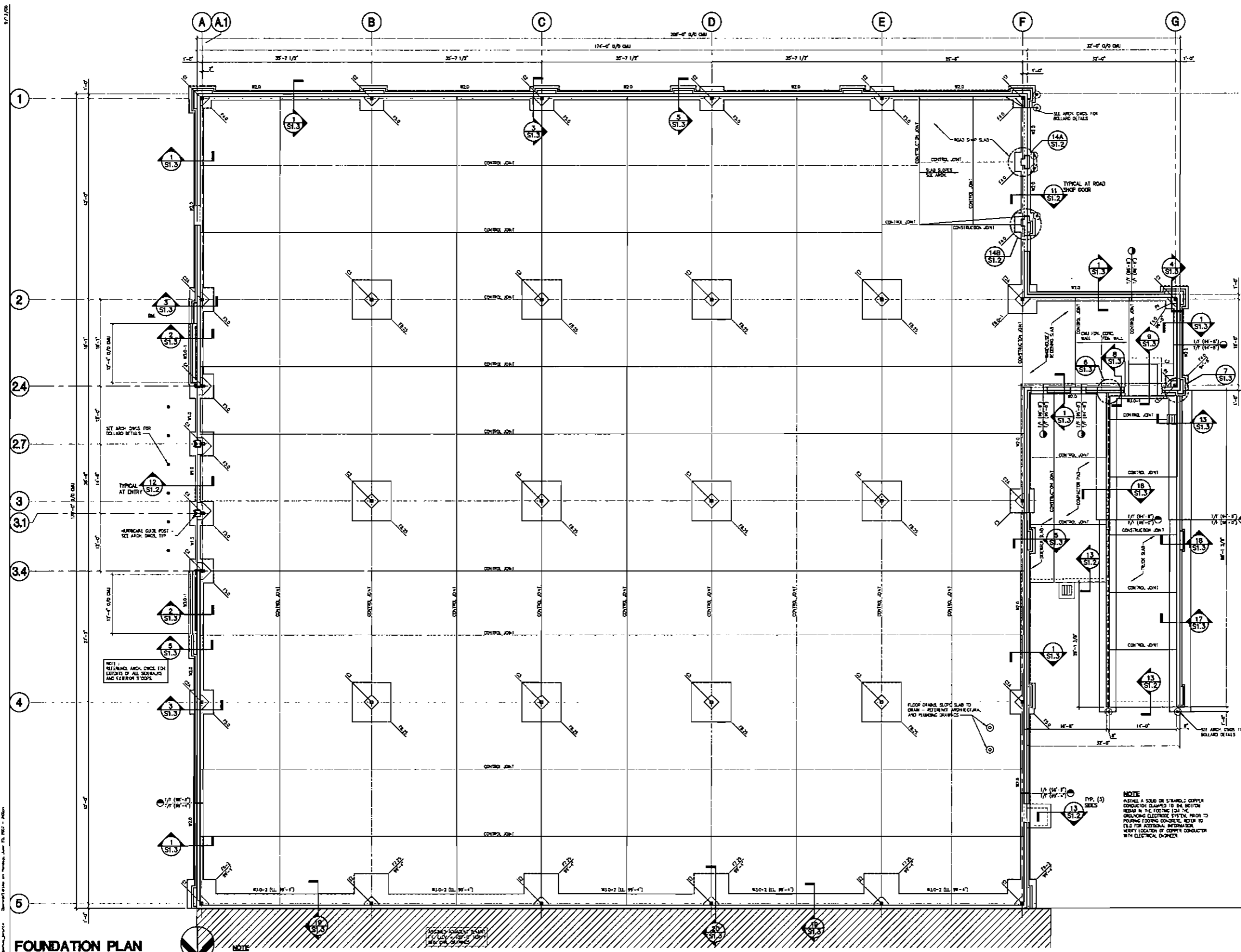
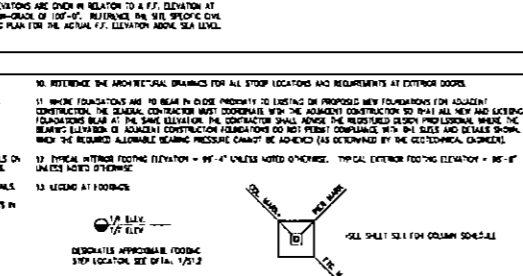


8/1/2025
 FOUNDATION PLAN
 SCALE: 1/8" = 1'-0"



FOUNDATION PLAN NOTES:

- SEE SHEET 011 AND 012 FOR GENERAL NOTES AND TYPICAL FOUNDATION DETAILS.
- THE CONTRACTOR SHALL PROVIDE THE SUB-GRADE FOR THE BUILDING FOUNDATIONS, BULLING PAD, AND PAVING AREAS FOR THE GEOGRAPHICAL, CIVIL ENGINEER'S REVIEW AND RECOMMENDATIONS.
- FOOTING STIP LOCATIONS ARE SHOWN FOR REFERENCE ONLY. THE CONTRACTOR SHALL DETERMINE THE ACTUAL LOCATION AND NUMBER OF STIPS REQUIRED BASED ON THE SITE GRADING CONDITIONS AND PLUMBING LOCATIONS.
- UNLESS OTHERWISE SHOWN, REFER TO THE TYPICAL MASONRY UNIT, BEARING, JOINT, AND D.D.O.-WALL DETAILS ON SHEET 2 FOR ADDITIONAL WALL REINFORCEMENT REQUIRED AT SIDES OF OPENINGS AND JOINTS IN MASONRY WALLS.
- SOME AREAS OF SLAB REPAIRS, CORNERS, JOINTS, etc., SHALL BE REINFORCED PER THE PLANS AND DETAILS.
- PROVIDE EXTERIOR JOINT BRACING AS SHOWN ON THIS PLAN. THE CONTRACTOR MAY LOAD CONSTRUCTION JOINTS IN SLABS AS NEEDED, AT ANY LOCATION, INDICATED AS A CONTROL JOINT.
- JOINT PATCH SHALL BE PLACED IN CLEAN JOINTS OF INTERIOR SLAB, OVERLAPPED AND SHOWN ELSEWHERE.
- RETAIN THE ARCHITECTURAL CHANGES AND SPECIFICATIONS FOR INTERIOR SLAB FINISHES.
- SLAB, THE SLAB SURFACE TO SLAB BRACKS (TYPICAL), COORDINATE P.C. TOP OF BRACK LETTERS WITH THE ARCHITECTURAL AND PLUMBING DRAWINGS.
- REFER TO THE ARCHITECTURAL DRAWINGS FOR ALL STAIR LOCATIONS AND REQUIREMENTS AT EXTERIOR DOORS.
- WHERE FOUNDATIONS ARE TO BEAR IN EXISTING MATERIAL TO LISTING OR PROPOSED NEW FOUNDATIONS FOR EXISTING CONSTRUCTION, THE GENERAL CONTRACTOR MUST COORDINATE WITH THE ADJACENT CONTRACTOR TO RAISE ALL NEW AND EXISTING FOUNDATIONS BEAR AT THE SAME ELEVATION. THE CONTRACTOR SHALL ADVISE THE REGISTERED DESIGN PROFESSIONAL, UNDER THE REGISTERED ELEVATION OF ADJACENT CONSTRUCTION FOUNDATIONS DO NOT PRESENT COMPLIANCE WITH ALL RULES AND REGULATIONS, OR WHICH THE REQUIRED ALLOWABLE BEARING PRESSURE CANNOT BE ACHIEVED (AS DETERMINED BY THE GEOTECHNICAL ENGINEER).
- TYPICAL INTERIOR FOOTING ELEVATION = 99'-4" UNLESS NOTED OTHERWISE. TYPICAL EXTERIOR FOOTING ELEVATION = 99'-8" UNLESS NOTED OTHERWISE.
- SEE SHEET 011 FOR COLUMN SCHEDULE.



FOOTING SCHEDULE

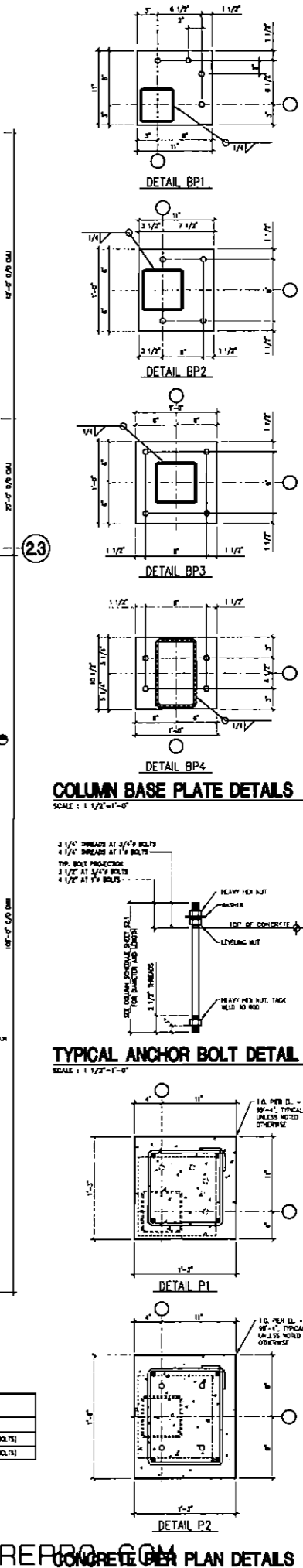
MARK	SIZE	REINFORCING
W10	1'-0" x 1'-4" x CONTIGUOUS	(1) - #5 x CONTIGUOUS BOTTOM
W20	2'-0" x 1'-0" x CONTIGUOUS	(1) - #5 x CONTIGUOUS BOTTOM
W30-1	3'-0" x 1'-0" x CONTIGUOUS	(1) - #5 x CONTIGUOUS BOTTOM
W30-2	3'-0" x 1'-4" x CONTIGUOUS	(1) - #5 x CONTIGUOUS BOTTOM
140	4'-0" x 1'-0" x 1'-0"	(3) - #5 x 1'-0" EACH BAY BOTTOM
120	3'-0" x 1'-0" x 1'-0"	(3) - #5 x 1'-0" EACH BAY BOTTOM
180-1	3'-0" x 1'-0" x 1'-0"	(3) - #5 x 1'-0" EACH BAY BOTTOM
180-2	3'-0" x 1'-0" x 1'-0"	(3) - #5 x 1'-0" EACH BAY TOP & BOTTOM
220	7'-2" x 7'-2" x 1'-0"	(1) - #5 x 7'-2" C.R. COO.; (1) - #5 x 7'-2" E.W. TOP
280	8'-2" x 8'-2" x 1'-0"	(1) - #5 x 8'-2" C.R. COO.; (1) - #5 x 8'-2" E.W. TOP

SLAB SCHEDULE

LOCATION	THICKNESS & REINFORCING	SUBBASE*
SALES AREA SLAB	4" CONCRETE SLAB-ON-GRADE REINFORCED WITH #4-12" (1/4" x 12")	4" MIN. VIBRATED SAND BARRIER SAND/STIP OR SAND OVER 4" GRANULAR SUBBASE
ROAD SHOP SLAB	4" CONCRETE SLAB-ON-GRADE REINFORCED WITH #4-12" (1/4" x 12")	4" MIN. VIBRATED SAND BARRIER SAND/STIP OR SAND OVER 4" GRANULAR SUBBASE
TRUCK EMP.	4" CONCRETE SLAB-ON-GRADE REINFORCED WITH #4-12" (1/4" x 12")	4" MIN. VIBRATED SAND BARRIER SAND/STIP OR SAND OVER 4" GRANULAR SUBBASE
COMPACTOR PAD	4" CONCRETE SLAB-ON-GRADE REINFORCED WITH #4-12" (1/4" x 12")	4" MIN. VIBRATED SAND BARRIER SAND/STIP OR SAND OVER 4" GRANULAR SUBBASE
SEWER/STAIR	4" CONCRETE SLAB-ON-GRADE REINFORCED WITH #4-12" (1/4" x 12")	4" MIN. VIBRATED SAND BARRIER SAND/STIP OR SAND OVER 4" GRANULAR SUBBASE
STOOPS	4" CONCRETE SLAB-ON-GRADE REINFORCED WITH #4-12" (1/4" x 12")	4" MIN. VIBRATED SAND BARRIER SAND/STIP OR SAND OVER 4" GRANULAR SUBBASE
TRANSFORMER PAD	PER UTILITY OFFICE	PER UTILITY OFFICE

CONCRETE PIER SCHEDULE

MARK	SIZE	REINFORCING	TIES
P1	15" x 15"	(4) - #4 VERTICALS	#3 AT 8" O.C. (2 AMPLING A BOLT)
P2	12" x 12"	(4) - #4 VERTICALS	#3 AT 8" O.C. (2 AMPLING A BOLT)



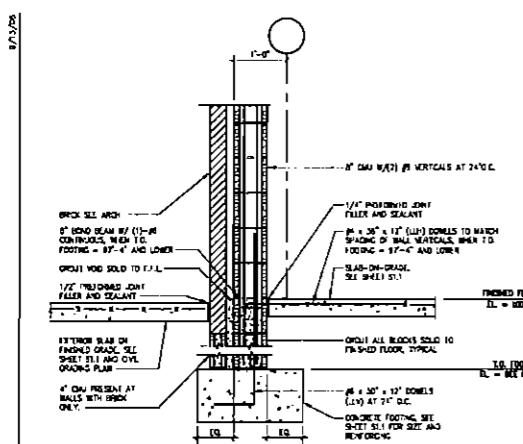
206266
CASCO
 PROJECT MANAGERS

ORLANDO
ASSUMEE
THE LOOP WEST SHOPPING CENTER
FOUNDATION PLAN

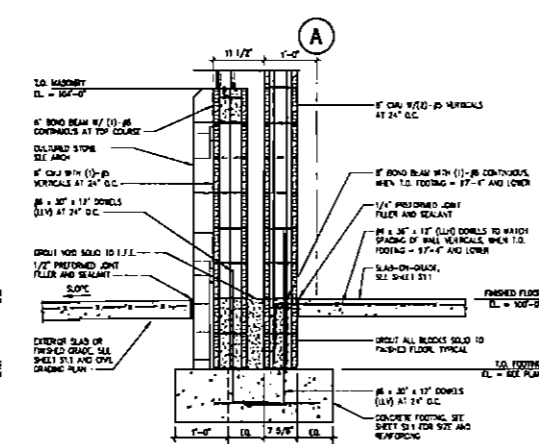
Circuit City

CIRCUIT CITY STORES INC.
 4130
H30

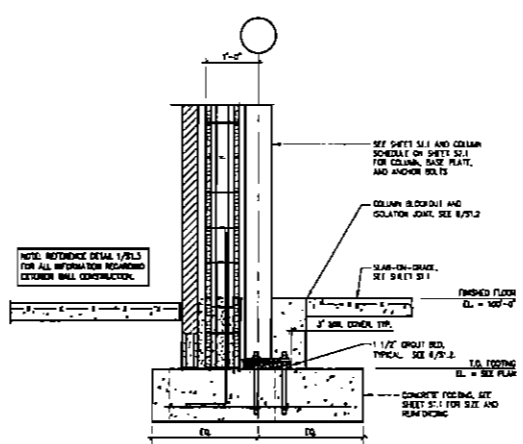
CONTRACT
S1.1



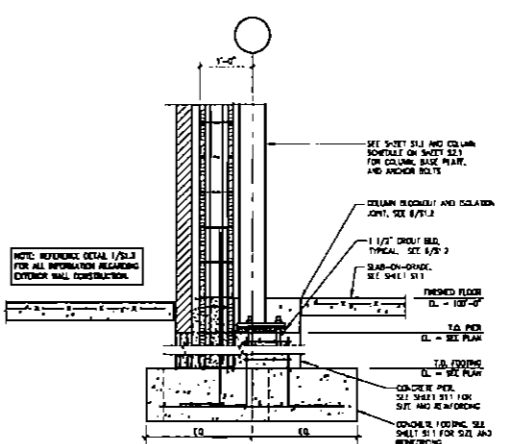
1 WALL FOOTING DETAIL
S1.3 SCALE: 3/4\"/>



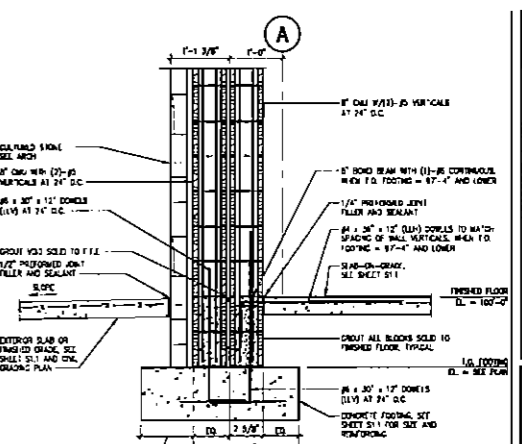
2 WALL FOOTING DETAIL
S1.3 SCALE: 3/4\"/>



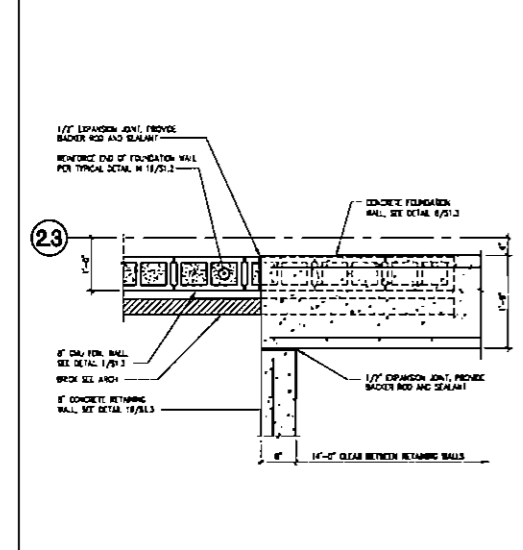
3 COLUMN FOOTING DETAIL
S1.3 SCALE: 3/4\"/>



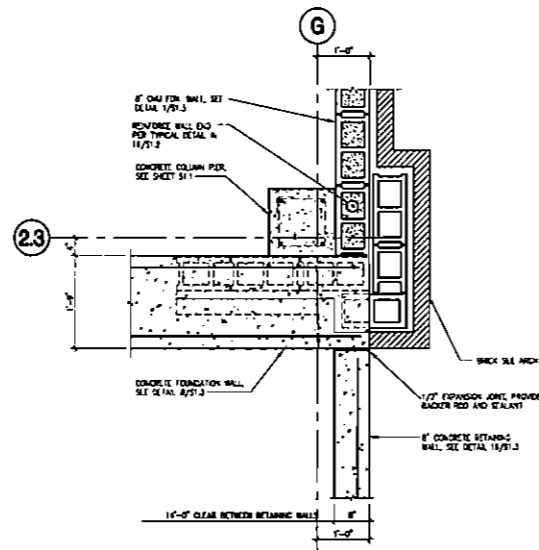
4 COLUMN/PIER FOOTING DETAIL
S1.3 SCALE: 3/4\"/>



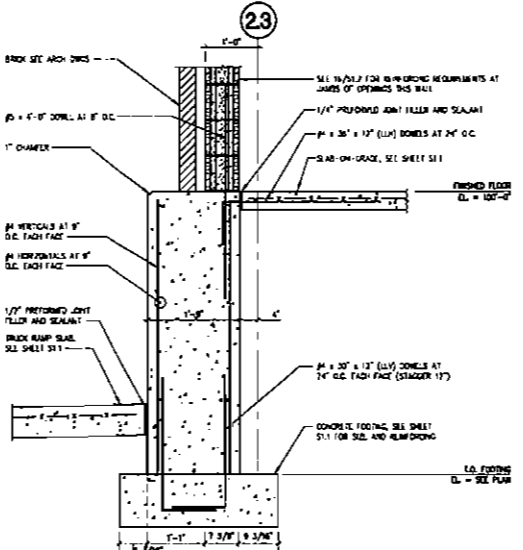
5 PILASTER FOOTING DETAIL
S1.3 SCALE: 3/4\"/>



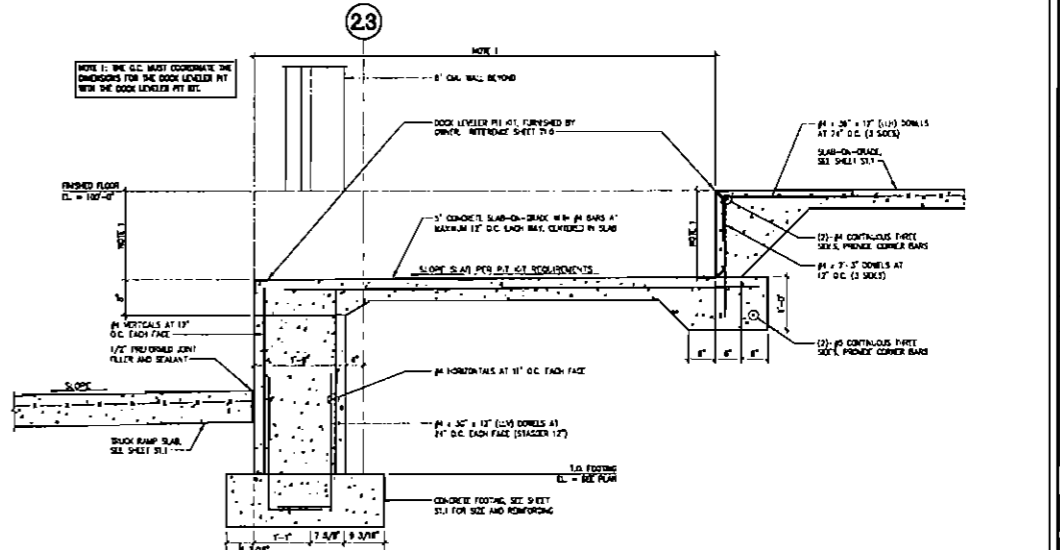
6 WALL INTERSECTION PLAN DETAIL
S1.3 SCALE: 3/4\"/>



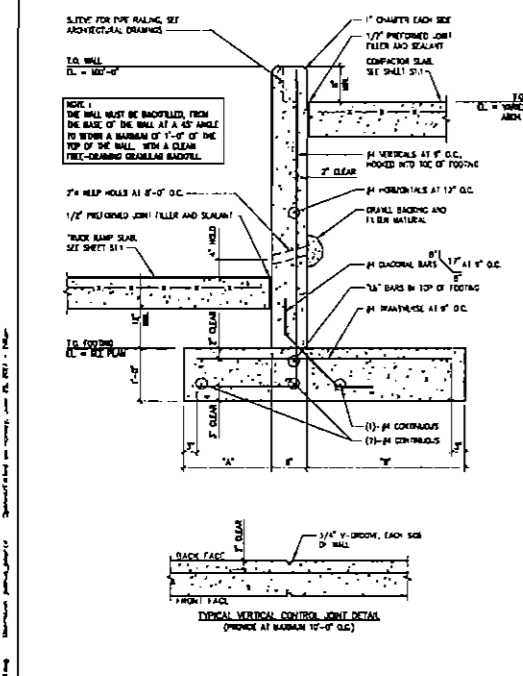
7 WALL INTERSECTION PLAN DETAIL
S1.3 SCALE: 3/4\"/>



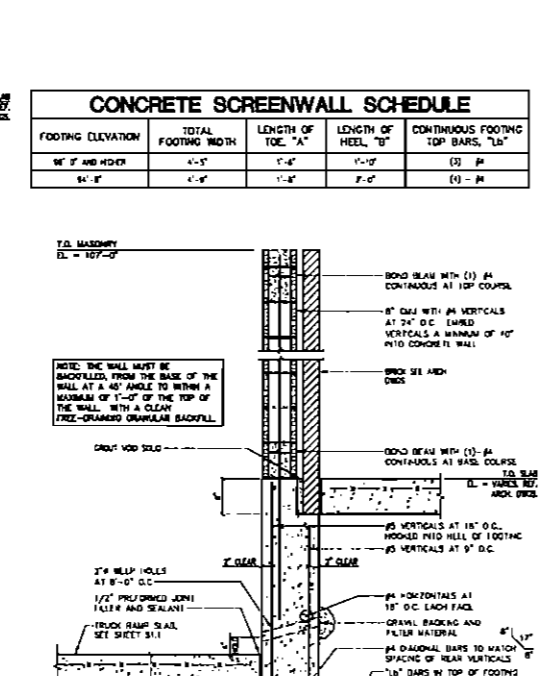
8 WALL FOOTING DETAIL
S1.3 SCALE: 3/4\"/>



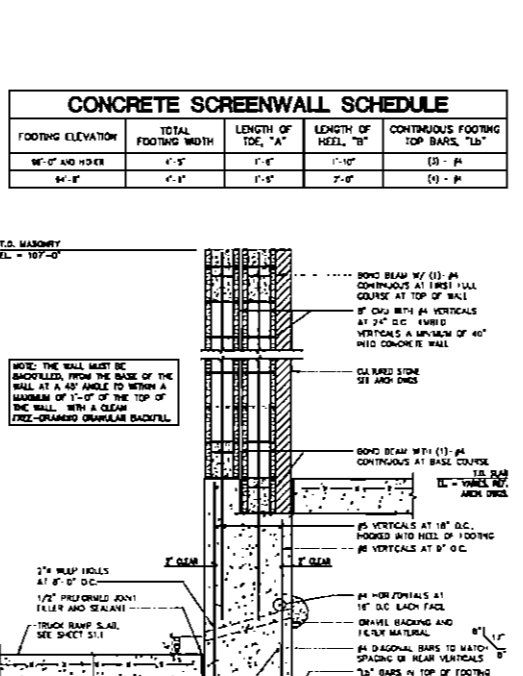
9 TRUCK DOCK FOOTING DETAIL
S1.3 SCALE: 3/4\"/>



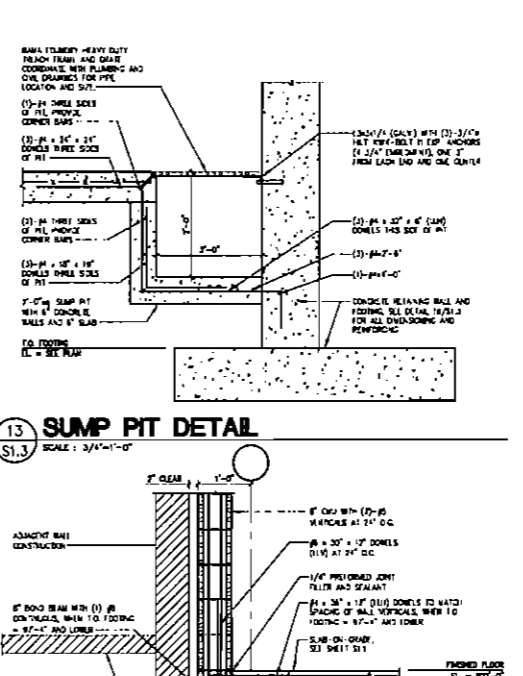
16 RETAINING WALL DETAIL
S1.3 SCALE: 3/4\"/>



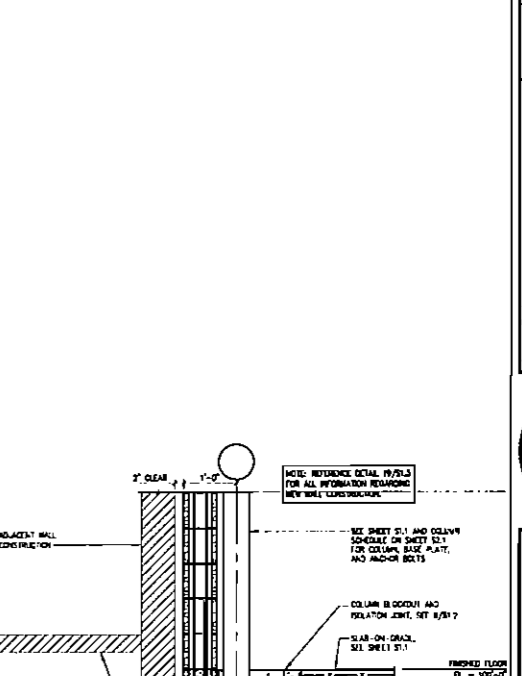
17 SCREENWALL DETAIL
S1.3 SCALE: 3/4\"/>



18 SCREENWALL DETAIL
S1.3 SCALE: 3/4\"/>



13 SUMP PIT DETAIL
S1.3 SCALE: 3/4\"/>



10 WALL FOOTING DETAIL
S1.3 SCALE: 3/4\"/>

CONCRETE SCREENWALL SCHEDULE

FOOTING ELEVATION	TOTAL FOOTING WIDTH	LENGTH OF TOE, 'A'	LENGTH OF HEEL, 'B'	CONTINUOUS FOOTING TOP BARS, 'Lb'
9'-0" AND HIGHER	4'-5"	1'-0"	1'-0"	(3) - #4
8'-0"	4'-5"	1'-0"	2'-0"	(4) - #4

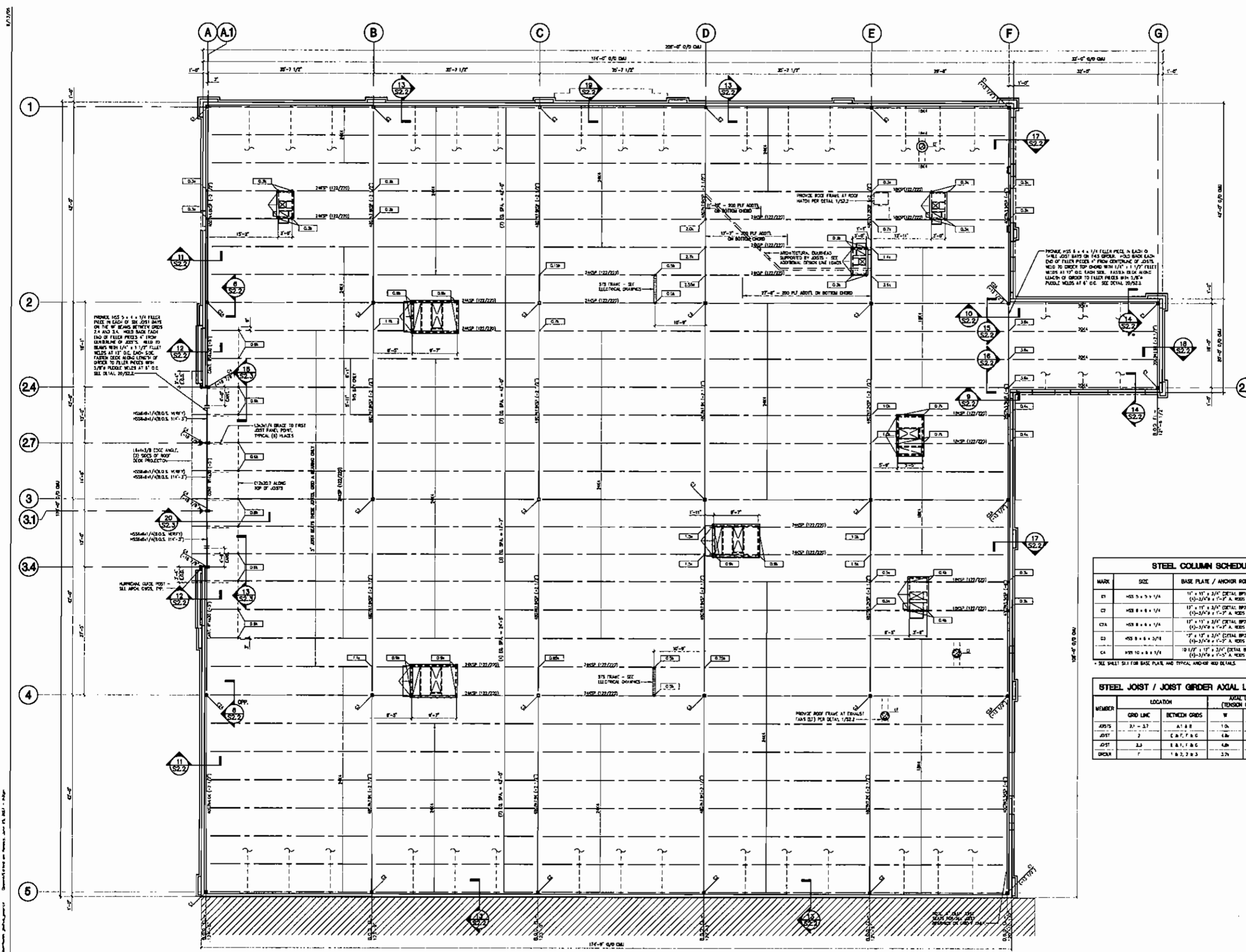
CONCRETE SCREENWALL SCHEDULE

FOOTING ELEVATION	TOTAL FOOTING WIDTH	LENGTH OF TOE, 'A'	LENGTH OF HEEL, 'B'	CONTINUOUS FOOTING TOP BARS, 'Lb'
9'-0" AND HIGHER	4'-5"	1'-0"	1'-0"	(3) - #4
8'-0"	4'-5"	1'-0"	2'-0"	(4) - #4

CONCRETE RETAINING WALL SCHEDULE

FOOTING ELEVATION	TOTAL FOOTING WIDTH	LENGTH OF TOE, 'A'	LENGTH OF HEEL, 'B'	CONTINUOUS FOOTING TOP BARS, 'Lb'
9'-0" AND HIGHER	3'-4"	1'-0"	1'-0"	(3) - #4
8'-0"	4'-5"	1'-0"	2'-0"	(4) - #4

206265
CASCO PROJECT MANAGERS
ORLANDO, FLORIDA
DATE: 01/27/07
PROJECT: THE LOOP WEST SHOPPING CENTER
FOUNDATION DETAILS
SHEET: FL 4130
SCALE: H30
CONTRACT
S1.3



ROOF FRAMING PLAN NOTES:

- SEE SHEETS S01 AND S02 FOR GENERAL NOTES AND TYPICAL FRAMING DETAILS.
- BOTTOM OF DECK (BOD) EQUALS TOP OF JOIST / UNDERSIDE OF METAL DECK. THE ELEVATION OF THE TOP OF STEEL COLUMN BEAMS AND JOIST CHORDS ARE REFERENCED +/- FROM BOTTOM OF DECK, UNLESS NOTED OTHERWISE. ALL OTHER ELEVATIONS ARE REFERENCED FROM A RELATIVE FINISHED FLOOR ELEVATION = 100'-0\"/>

NOTE:
ALL JOISTS, JOIST BRACING, JOIST CHORDS AND JOIST GIRDER BEAMS SHALL BE DESIGNED BY THE JOIST MANUFACTURER FOR THE UPLIFT PRESSURE SPECIFIED ON SHEET S01.

STEEL COLUMN SCHEDULE

MARK	SIZE	BASE PLATE / ANCHOR ROOF-	CAP PLATE
C1	HSS 5 x 5 x 1/4	17" x 17" x 3/4" (DETAIL SPS) (1)-3/4" x 5'-2" A. ROOF	8 1/2" x 8" x 3/4"
C2	HSS 8 x 8 x 1/4	17" x 17" x 3/4" (DETAIL SPS) (1)-3/4" x 5'-2" A. ROOF	10 1/2" x 8" x 3/4"
C3A	HSS 8 x 8 x 1/4	17" x 17" x 3/4" (DETAIL SPS) (1)-3/4" x 5'-2" A. ROOF	14" x 8" x 3/4"
C3	HSS 8 x 8 x 3/4	17" x 17" x 3/4" (DETAIL SPS) (1)-3/4" x 5'-2" A. ROOF	14" x 8" x 3/4"
C4	HSS 10 x 8 x 1/4	10 1/2" x 17" x 3/4" (DETAIL SPS) (1)-3/4" x 5'-2" A. ROOF	10" x 14" x 3/4"

STEEL JOIST / JOIST GIRDER AXIAL LOAD SCHEDULE

MEMBER	LOCATION		AXIAL LOAD IN TOP CHORD (TENSION OR COMPRESSION), kips		
	GRID LINE	BETWEEN GRIDS	W	E	EN
JOIST	21 - 27	A1, B, C	1.0	-	-
JOIST	2	E, F, F, G, G	4.6	-	-
JOIST	3,3	E, F, F, G, G	4.6	-	-
CHORD	1,1	F, G, G, F, F	3.7	-	-

ROOF FRAMING PLAN
SCALE: 1/8" = 1'-0"

NOTE:
ALL ELEVATIONS ARE GIVEN IN RELATION TO A.F.T. ELEVATION AT 5.0' ON GRADE OF 100'-0". REFER TO THE SITE SPECIFIC CIVIL DRAWING PLAN FOR THE ACTUAL F.F. ELEVATION ABOVE SEA LEVEL.



TO ORDER PLANS GO TO WWW.LDIREPRO.COM

PROJECT NO. 208285
LDI PROJECT MANAGERS
 1000 N. W. 10TH AVENUE, SUITE 1000
 MIAMI, FL 33136
 TEL: 305.575.1100 FAX: 305.575.1101

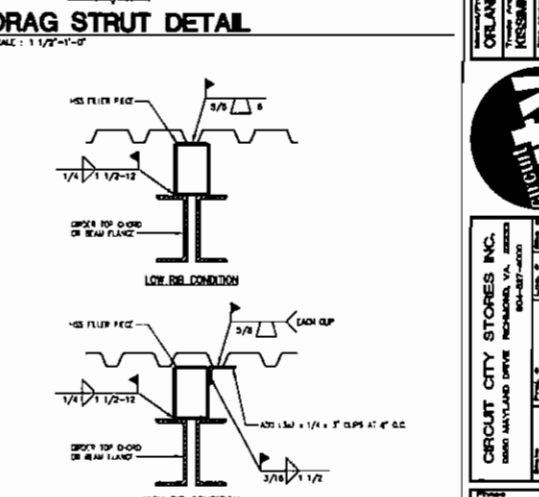
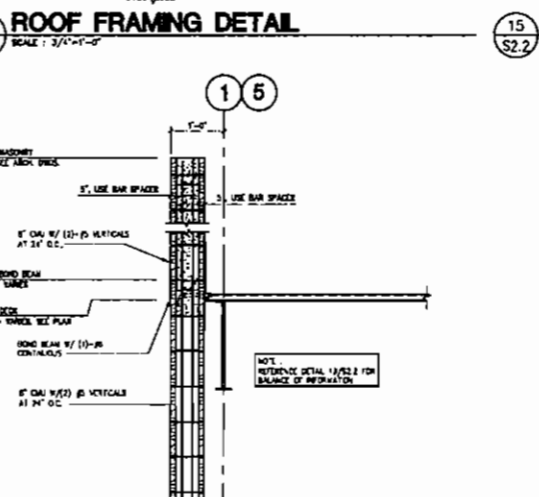
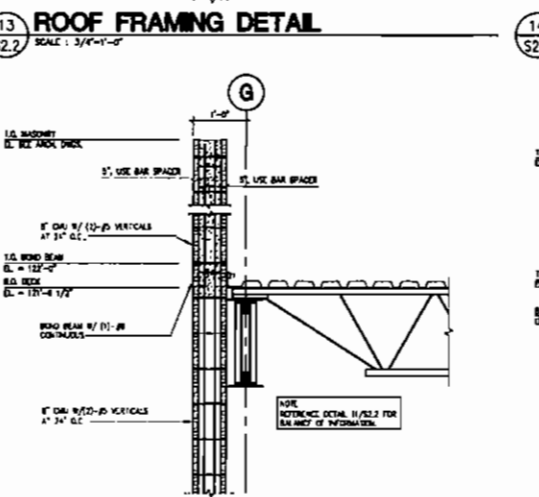
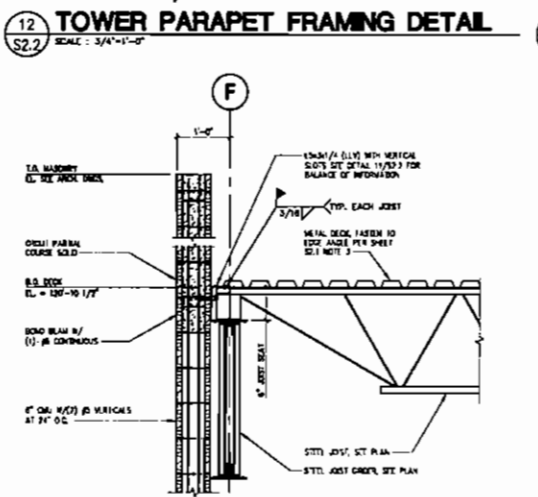
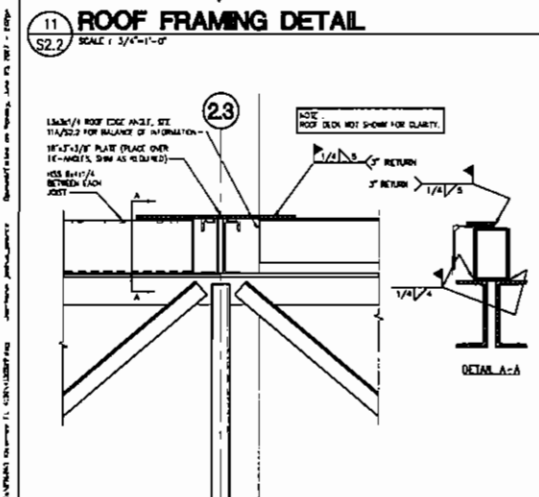
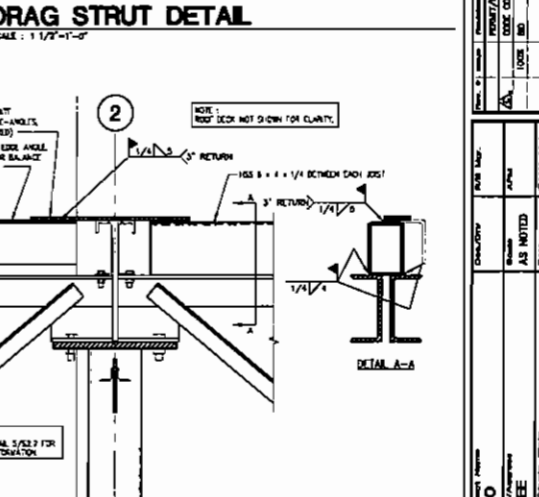
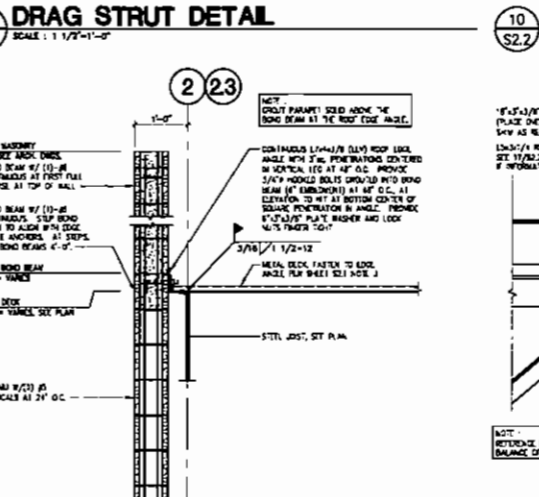
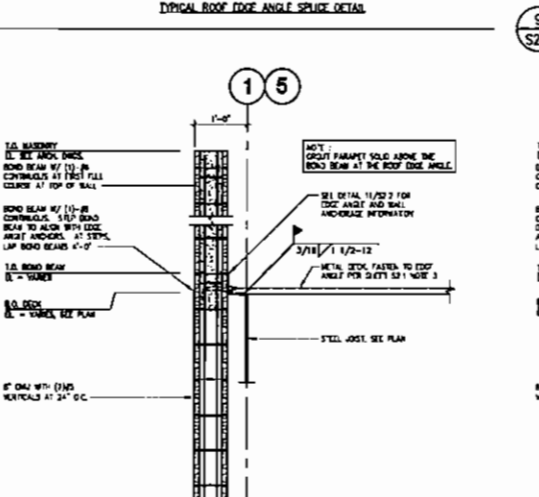
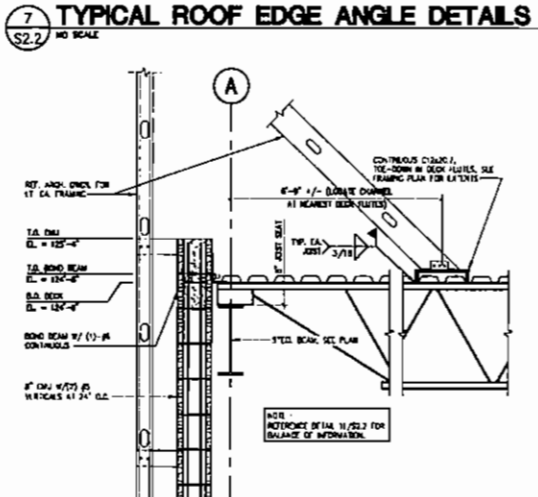
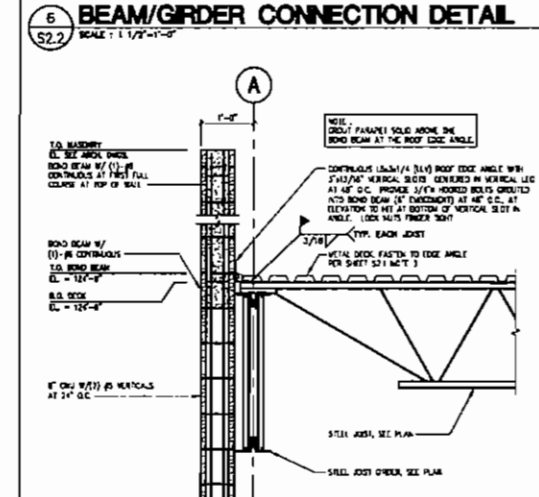
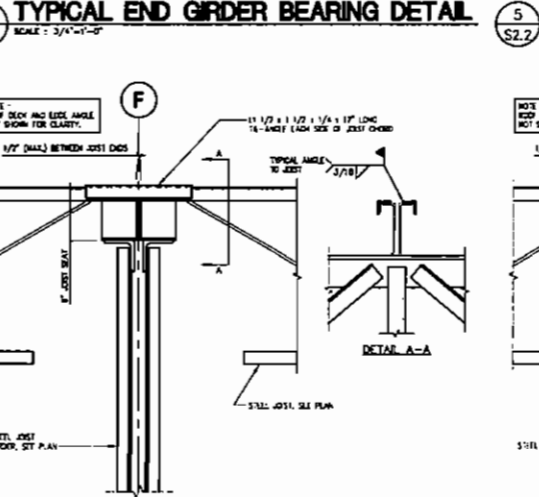
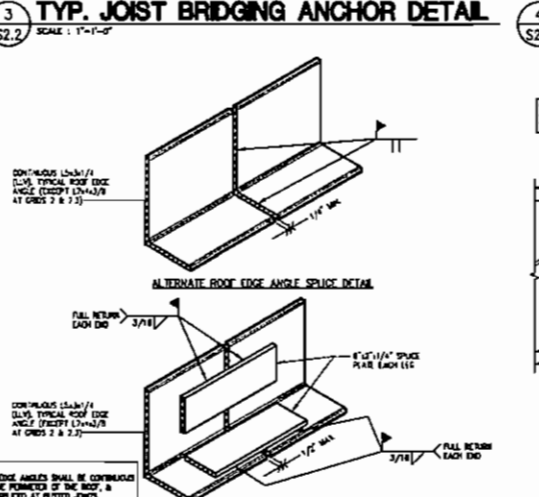
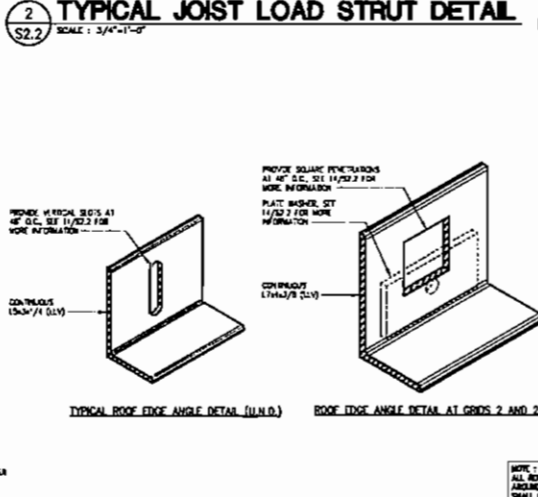
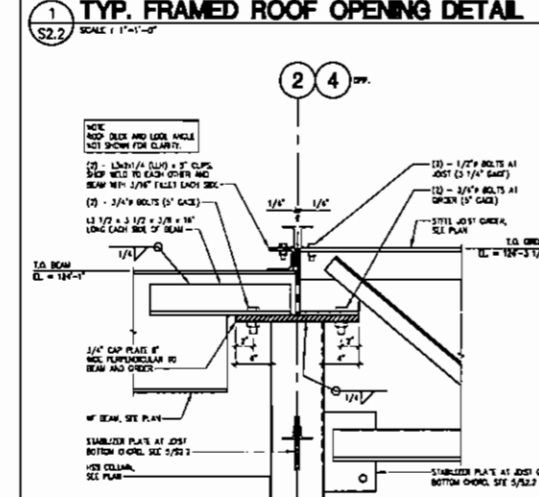
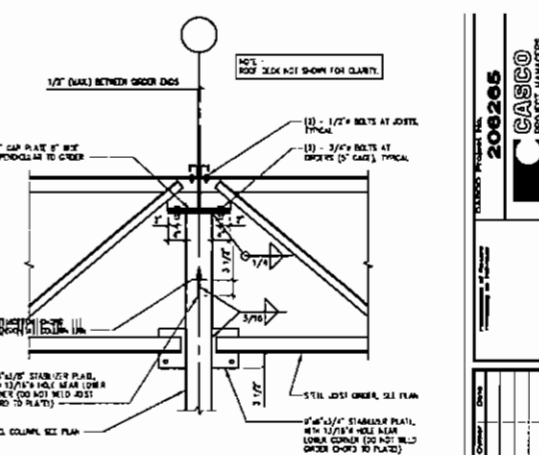
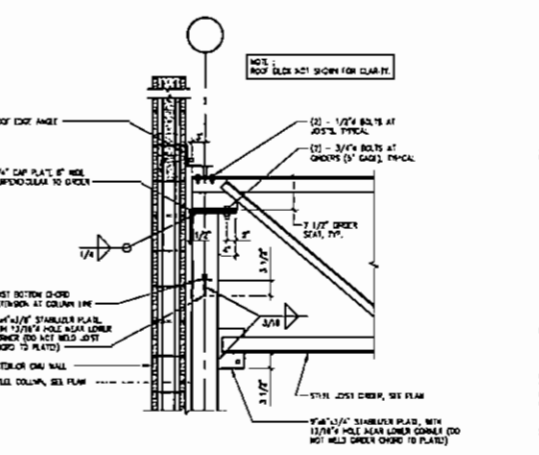
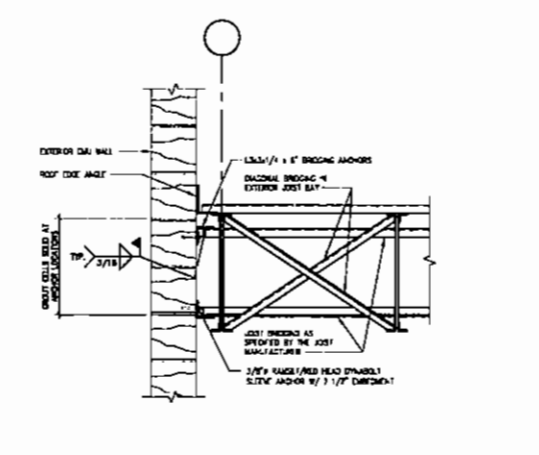
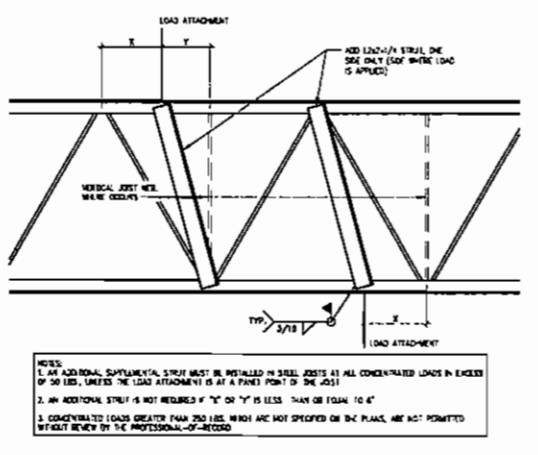
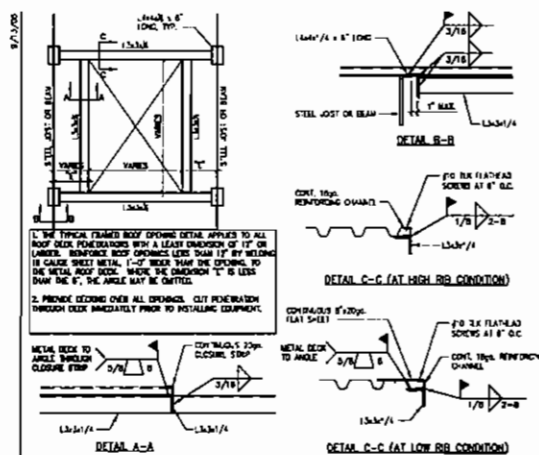
DATE: 04/27/07
 DRAWN BY: J. W. BROWN
 CHECKED BY: J. W. BROWN
 DATE: 04/27/07
 CHECKED BY: J. W. BROWN

PROJECT: THE LOOP WEST SHOPPING CENTER
 ROOF FRAMING PLAN

LDI
 CIVIL CITY STORES INC.
 6000 HAYLAND DRIVE, ROCKLEDGE, FL 34087-4000
 TEL: 888.453.4533 FAX: 888.453.4533

FL 4130
 H30

CONTRACT
 S2.1



CASCO PROJECT MANAGERS

208265

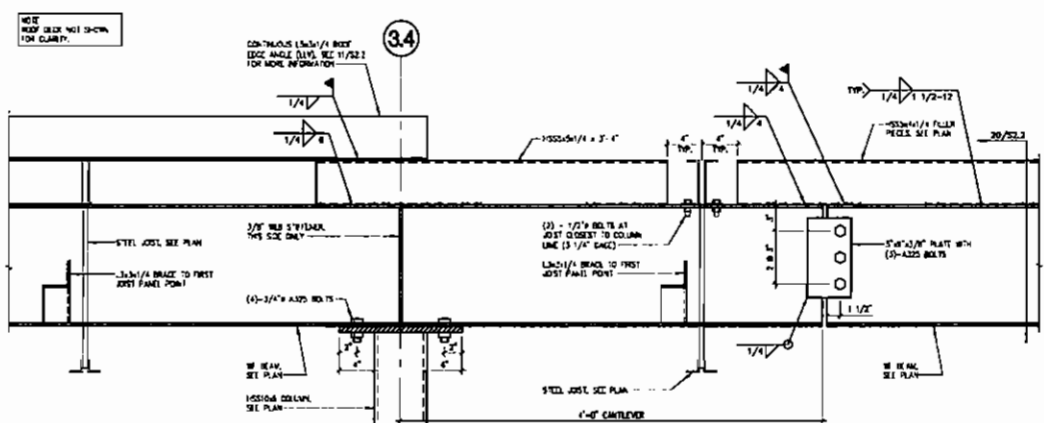
ORLANDO
KRESSMANEE
THE LOOP WEST SHOPPING CENTER
FRAMING DETAILS

FL 4130

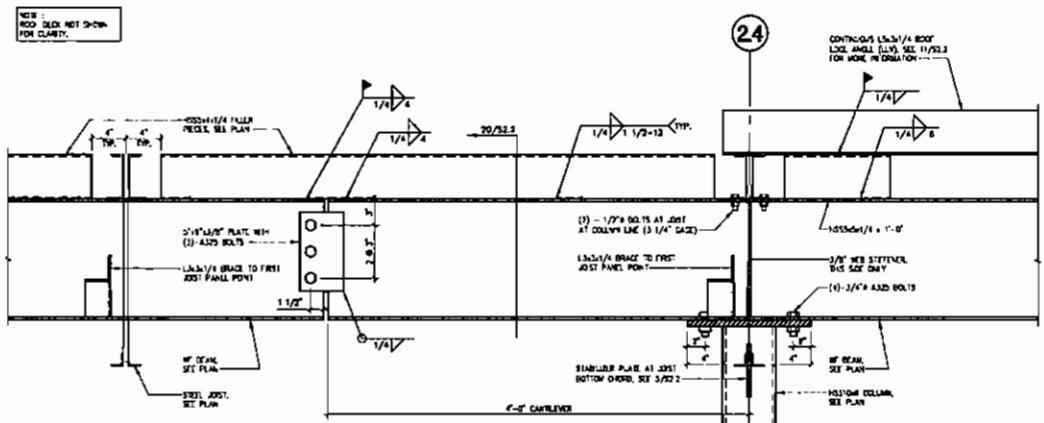
H30

CONTRACT

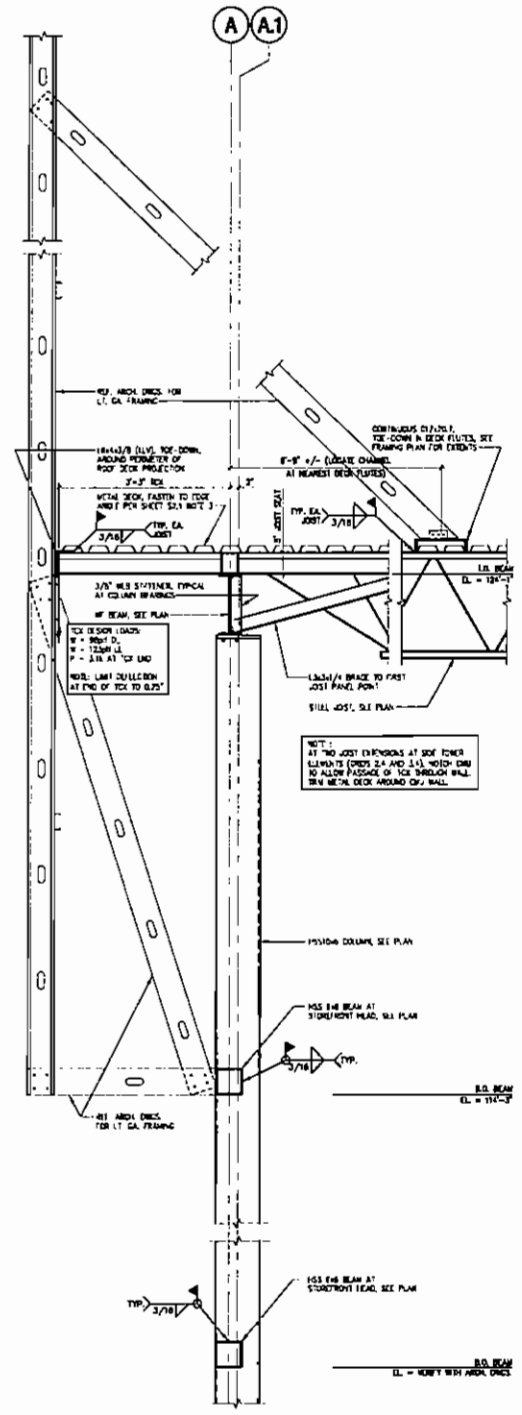
S2.2



13 BEAM CONNECTION DETAIL
SCALE: 1/2\"/>



18 BEAM CONNECTION DETAIL
SCALE: 1/2\"/>



TO ORDER PLANS GO TO WWW.ENTRYTOWERFRAMING.COM

PROJECT NO: 206265 PROJECT NAME: THE LOOP WEST SHOPPING CENTER PROJECT ADDRESS: 4130 FL 4130 PROJECT TYPE: H30	DATE: 8/13/07 DRAWN BY: [Name] CHECKED BY: [Name] APPROVED BY: [Name]
CONTRACT NO: S2.3	PROJECT NO: H30