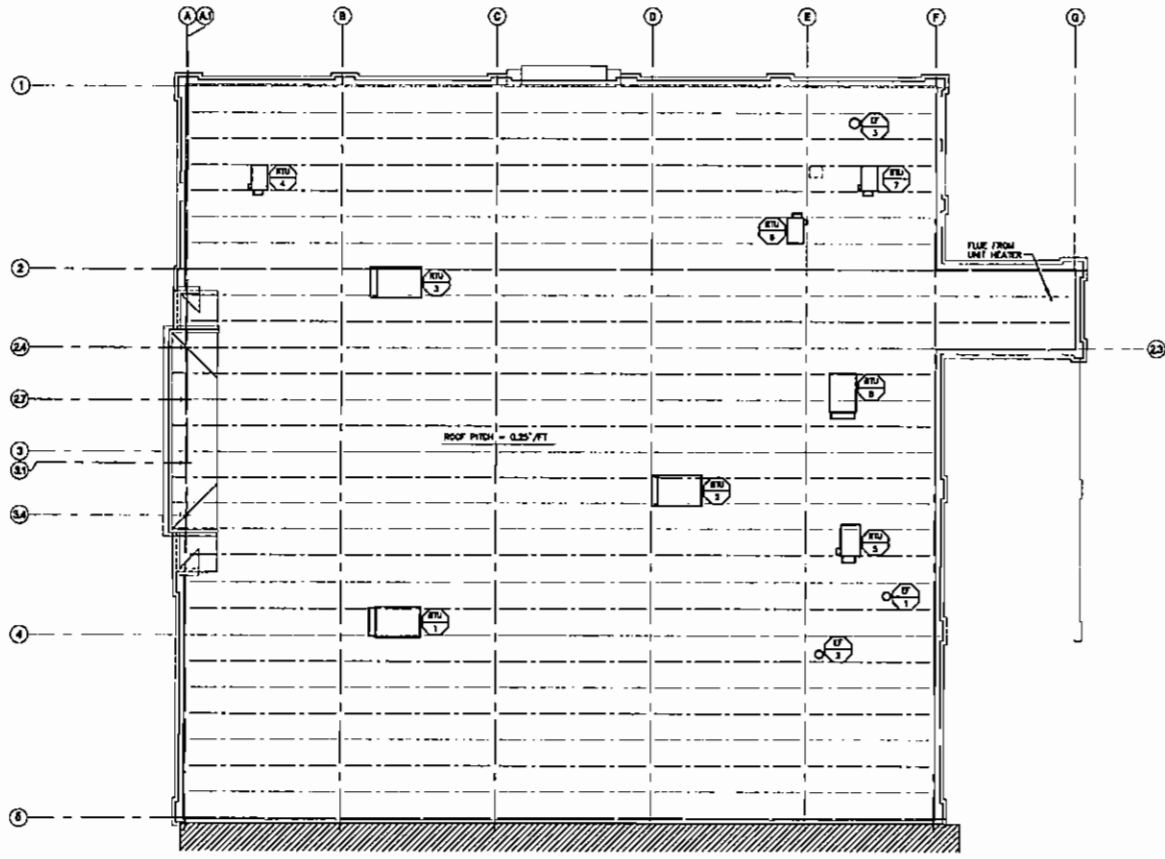


### HVAC GENERAL NOTES

- THESE MECHANICAL DRAWINGS ARE DIAGRAMMATIC AND SHOW GENERAL LAYOUT AND DUCT RUNS. THE CONTRACTOR SHALL MAKE OBTAINED LARGE SCALE DRAWINGS OF THE DUCTWORK AND EQUIPMENT AND COORDINATE WITH OTHER TRADES. ADDITIONAL DETAILS AND TRANSITIONS SHALL BE PROVIDED AS REQUIRED TO INSTALL THE DUCTWORK. ALL DIMENSIONS SHOWN ON THESE DRAWINGS ARE FOR THE CONVENIENCE OF THE CONTRACTOR AND SHALL BE CHECKED AND COORDINATED IN THE FIELD BEFORE DUCT AND EQUIPMENT INSTALLATION. ADVISE THE GENERAL CONTRACTOR AS TO THE EXACT SIZE AND LOCATION OF OPENINGS IN THE STRUCTURE. FAILURE TO COORDINATE WITH OTHER TRADES SHALL NOT BE JUSTIFICATION FOR ADDITIONAL COMPENSATION.
- WORK SHALL BE PERFORMED IN ACCORDANCE WITH ALL APPLICABLE STATE AND LOCAL BUILDING CODES. ALL EQUIPMENT AND MATERIALS CAPABLE OF BEING LABELLED OR LISTED SHALL BEAR THE UL LABEL. SUBMIT FOR APPROVAL SIX (6) COPIES OF SHOP DRAWINGS TO COMPLETELY IDENTIFY THE QUALITY OF MATERIALS AND/OR EQUIPMENT INTENDED FOR INSTALLATION.
- THE CONSTRUCTION, INSTALLATION AND SUPPORTING OF ALL DUCTWORK SHALL BE IN ACCORDANCE WITH THE CONSTRUCTION STANDARDS AND RECOMMENDATIONS OF THE SHEET METAL AND AIR CONDITIONING CONTRACTORS NATIONAL ASSOCIATION (SMACNA). ALL DUCTS EXCEPT FLEXIBLE DUCTS SHALL BE GALVANNEED SHEET METAL AND MEET SMACNA SEAL CLASS C.
- ALL RECTANGULAR SUPPLY AND RETURN AIR DUCTS EXCEEDING FIFTEEN FEET (15') FROM A ROOFTOP UNIT, AND ALL RECTANGULAR TRANSFER AIR DUCTS SHALL HAVE INTERNAL ACROUSTIC LINER. THE LINER SHALL BE ONE INCH (1") THICK, INSTALLED WITH GLE AND PINS. ALL END EDGES OF THE LINER SHALL BE SEALED WITH SHEET METAL GLE AND FASTENERS. ALL EXHAUST CONCEALED ROOF DUCTS SHALL BE AT THE CONTRACTOR'S OPTION, INTERNALLY LINED OR EXTERNALLY WRAPPED. EXTERNAL DUCT WRAP SHALL BE TWO INCH (2") THICK FIBERGLASS INSULATION WITH A VAPOR BARRIER.
- ROUND DUCT TRANSITS SHALL BE A SPIN-IN TYPE WITH DAMPER. ALL ROUND DUCTS SHALL BE CONNECTED WITH SHEET METAL SPORES AND SUPPORTED WITH ONE INCH (1") METAL STRAPS.
- FLEXIBLE DUCTS, IF USED, SHALL BE EQUAL TO THERMASTER TYPE RNF, INSULATED WITH ONE AND ONE-HALF INCH (1.5") THICK FIBERGLASS INSULATION. A FLAME SPREAD RATING OF NO MORE THAN 2.0 AND A MAXIMUM THERMAL CONDUCTANCE OF 0.33 IS REQUIRED. ALL FLEXIBLE DUCTS SHALL BE CONNECTED TO TRANSIT OR BRANCH DUCTS WITH A MINIMUM OF THREE (3) SHEET METAL SPORES AT EACH CONNECTION. FLEXIBLE DUCTS SHALL BE SUPPORTED BY ONE INCH (1") WIDE 1/8 GAUGE (DINAMIN) METAL STRIPS. THE MAXIMUM SPACING OF FLEXIBLE DUCTS SHALL BE SIX FEET (6'-0") OR LESS IF LIMITED BY LOCAL CODE. THE MINIMUM BENDING RADIUS SHALL BE ONE AND ONE-HALF (1.5) TIMES THE DUCT DIAMETER OR AS SUGGESTED BY THE DUCT MANUFACTURER.
- DUCT DIMENSIONS SHOWN ON THESE DRAWINGS ARE INSIDE CLEAR DIMENSIONS. ALLOWANCE FOR INTERNAL LINER, WHERE USED, SHALL BE MADE.
- ACCESS DOORS SHALL BE INSTALLED IN DUCTS ADJACENT TO ALL MANUAL DAMPERS, FIRE DAMPERS, CONTROL DEVICES, ETC. THE CONTRACTOR SHALL INSTALL FIRE DAMPERS IN ALL DUCTS WHERE THEY PENETRATE FIRE-RATED WALLS OR FLOORS.
- INSTALL TURNING VANES IN ALL 90 DEGREE DUCT ELBOWS AND AT DUCT TEES. DO NOT INSTALL AIR VOLUME EXTRACTORS OR SPILTER DAMPERS.
- DUCT TRANSITIONS SHALL HAVE A MINIMUM OF FOUR-TO-ONE (4:1) RATIO.
- PROVIDE MISCELLANEOUS STEEL AND/OR WOOD BRACING AND SUPPORT AT ROOF CURBS AND DOWNCASTS AS REQUIRED TO SUPPORT ROOF CURBS AND EQUIPMENT. SPECIFIC REQUIREMENTS SHALL BE VERIFIED WITH THE ARCHITECT AND APPROVED EQUIPMENT DRAWINGS PRIOR TO PLACEMENT. ANCHOR LOCATING EQUIPMENT, DUCTS, PIPES, ETC. OVER ELECTRICAL PANELS.
- THE CONTRACTOR SHALL INSTALL ALL ROOF CURBS LEVEL WITH TOLERANCES SUGGESTED BY THE UNIT MANUFACTURER. WHEN NOT INTERNALLY INSULATED, INSULATE THE OUTSIDE OF THE ROOF CURBS WITH ONE AND ONE-HALF INCH (1.5") THICK ROOF ROOF INSULATION AND PROVIDE INSULATION CHIT BETWEEN THE ROOF AND THE CURBS. THE ROOFING CONTRACTOR SHALL FLASH THE ROOFING UP THE SIDES OF THE CURBS AND PROVIDE GASKET FLASHING AS REQUIRED.
- FURNISH AND INSTALL ONE-HALF INCH (0.5") DIAMETER STEEL SECURITY BARS WITH SIX INCH (6") SPACING BOTH WAY IN ALL OPENINGS IN WALLS AND ROOF FOR MECHANICAL DUCTS, FANS, LOUVERS, ETC. SIX INCHES (6") SQUARE OR LARGER.
- THE CONTRACTOR SHALL PROVIDE A GASKET BETWEEN THE ROOF CURB AND THE BASE OF THE CURB-MOUNTED FAN TO CREATE AN AIRTIGHT JOINT.
- CONSTRUCTION DUST AND DEBRIS SHALL BE REMOVED FROM ALL AIR DISTRIBUTION DEVICES AND SHALL BE VACUUMED FROM DUCTS AND DUCT LINES.
- THE CONTRACTOR SHALL PROVIDE CLEAN FILTERS IN THE ROOFTOP UNITS PRIOR TO THE AIR BALANCE PROCEDURES. CLEAN PRIOR TO OWNER ACCEPTANCE. THE FILTERS SHALL BE TWO INCH (2") THICK "FANN 30/30" OR EQUAL.
- BALANCE AIR SUPPLY, RETURN AND EXHAUST AIR DEVICES TO THE AIR QUANTITIES INDICATED ON THE DRAWINGS AND FURNISH THREE (3) COPIES OF THE AIR BALANCE REPORT TO THE ENGINEER PRIOR TO THE FINAL INSPECTION. AIR QUANTITIES SHALL BE BALANCED IN ACCORDANCE WITH THE STANDARDS SET FORTH BY THE ASSOCIATED AIR BALANCE COUNCIL (AABC), AND SHALL MEASURE WITH FMC METER (S) OF THE SCHEDULED VALUES. THE AIR BALANCE REPORTS SHALL BE SUBMITTED ON STANDARD FORMS. REFER TO THE SPECIFICATIONS FOR FURTHER REQUIREMENTS.
- REFER TO THE ARCHITECTURAL DRAWINGS FOR ADDITIONAL ROOF PLAN NOTES AND DETAILS.



ALL ROOF-MOUNTED EQUIPMENT SHALL BE PROVISIONALLY IDENTIFIED (RTU-1, RTU-2, ETC.) IN LETTERS AT LEAST ONE INCH (1") HIGH. IDENTIFIED TAGS OF PLASTIC OR METAL, ALPHANUMERIC LETTERS/NUMBERS AND SYMBOLS/PART ARE ACCEPTABLE METHODS.

### HVAC ROOF PLAN

SCALE: 1/8"=1'-0"

NORTH

### HVAC LEGEND

- DUCTWORK
- FIRE DAMPER
- VOLUME DAMPER
- SPIN-IN V/DAMPER
- DUCT/FLEX DUCT DROP TO SA DIFFUSER
- BLANDED OFF SA DIFFUSER
- RA GRILLES
- EXHAUST ORLE
- SUPPLY DUCT
- RETURN DUCT
- EXHAUST DUCT
- INDICATE ROOM SENSOR SEE ELECTRICAL DWGS
- CO2 SENSOR
- THERMISTAT
- DA, P
- CFM
- SP
- GA
- PERCENT
- F
- RA

### ROOFTOP UNIT NOTES

- CRUIT CITY STORES, INC. HAS A NATIONAL ACCOUNT WITH FRAME FOR PRODUCE AND DELIVERY OF ROOFTOP UNITS IN ACCORDANCE WITH THE FOLLOWING: NO SUBSTITUTION WILL BE ALLOWED FOR INFORMATION AND PRODUCE CALL. (804) 486-4130 JASON MULLIKSON TRUCK MATERIAL ACCOUNTS AS PART OF THE NATIONAL ACCOUNT, FRAME SHALL SUPPLY THE FOLLOWING ACCESSORIES:
  - STRUCTURAL CLASS B SECURITY BARS
  - METALLIZING ECONOMIZER DAMPERS
  - QUALITY EXHAUST DAMPER (POWER EXHAUST AS SCHEDULED)
  - OUTDOOR AIR HOOD
  - MOVING (EN-300) CONTROL SYSTEM KIT
  - QUALITY (VSD) OUTLETS (FIELD WIPED)
  - UNIT CIRCUIT BREAKER (FACTORY WIPED PROVIDES UNIT OVERCURRENT PROTECTION)
- THE ECONOMIZER SECTION SHALL PROVIDE FOR THE INTRODUCTION OF 100% OUTDOOR AIR AND ALLOW THE COMPRESSORS TO CYCLE FOR ADDITIONAL COOLING, AS NEEDED, WITH 100% OUTDOOR AIR INTAKE. THE RTU CONTROLS SHALL INCLUDE SOLID-STATE, ADJUSTABLE GLOBAL ENTHALPY CONTROL.
- UPON COMPLETION OF HVAC EQUIPMENT INSTALLATION AND STARTUP, MOVIE WILL PROVIDE A CONSULTANT TO INSPECT THE INSTALLATION AND PERFORM AN EQUIPMENT PERFORMANCE CHECK (EPC). THE MOVIE CONSULTANT WILL ADVISE THE CONTRACTOR BY CHECKING EACH MACHINE FOR PROPER OPERATION, CHECKING THE CONTROL PANEL AND ADJUSTING THE CONTROLS IF NECESSARY. THE EPC INCLUDES REPORTS WITH COPIES SENT TO THE GENERAL CONTRACTOR AND TO THE CRUIT CITY DIRECTOR OF CONSTRUCTION.

THE EPC WILL BE SCHEDULED BY THE CRUIT CITY CONSTRUCTION MANAGER, WHO WILL COORDINATE WITH ALL REQUIRED TRADES. THE MECHANICAL CONTRACTOR SHALL PROVIDE AT LEAST ONE HVAC TECHNICIAN WHO IS QUALIFIED TO TEST AND SERVICE HVAC EQUIPMENT. ANY PROBLEMS DISCOVERED WITH EQUIPMENT OR INSTALLATION (INCLUDING MOVIE INSTALLATION) SHALL BE CORRECTED BY THE CONTRACTOR WITH DIRECTION FROM THE MOVIE CONSULTANT.

PRIOR TO THE EPC ALL HVAC EQUIPMENT MUST BE SET, ALL THE COMPONENTS CONNECTED, ALL POWER WIRING AND PIPING COMPLETED, THE SHIPPING BLOCKS REMOVED AND UNITS STARTED.

ROOFTOP UNITS AIR FILTERS TO BE "FANN 30/30" MEDIAN EFFICIENCY, PLATED, 1" THICK OR EQUAL.

THE COMPONENT PACKAGES SHALL BE CLEARLY LABELED ON THE EXTERIOR OF ALL BOXES/UNIT.

SEE (E) SETS OF CATALOGUE WILL BE PROVIDED TO THE CONTRACTOR FOR SHOP DRAWING APPROVAL. FRAME WILL PROVIDE SHOP DRAWINGS FOR A JOB BASED ON THE JOB-SPECIFIC DRAWINGS AND SPECIFICATIONS SO THAT FIELD VERIFICATION OF ALL DIMENSIONS CAN BE MADE. NO ORDER WILL BE RELEASED BY FRAME WITHOUT APPROVED SHOP DRAWINGS ISSUED BY THE PROJECT ARCHITECT AND THE GENERAL CONTRACTOR.

**DUCT DETECTOR NOTES:**  
REFER TO FIRE ALARM PLANS BY TVA INC. FOR LOCATIONS, DESCRIPTIONS, SCHEDULES AND WIRING DIAGRAMS FOR ROOFTOP UNIT DUCT DETECTORS. PLAN FA-1-10 DATED 02/08/07.

COORDINATE WITH FLORIDA MECHANICAL CODE, 2004, CHAPTER 9, DUCT SYSTEMS SECTION AND SMOKE DETECTION SYSTEMS CONTROL.

- RTU-1 DUCT DETECTOR
- RTU-2 CONTROL RELAY
- RTU-3 CONTROL RELAY
- RTU-4 DUCT DETECTOR
- RTU-5 DUCT DETECTOR
- RTU-6 DUCT DETECTOR
- RTU-7 CONTROL RELAY
- RTU-8 CONTROL RELAY

### ELECTRIC ROOFTOP UNIT SCHEDULE

MARK	MODEL NUMBER	FAN DATA				COOLING DATA		ELEC. HEAT DATA		DCV CFM GA	EER/SEER	VOLT/PH	MCA/ROOF	INSTALLED WEIGHT (LB)	REMARKS
		CFM	ESP	HP	TOTAL STATIC	DESIGN	INPUT	OUTPUT							
RTU-1	170241C	8000	0.30	3.0	24432	184213	27	92205	900	1480	10.6/-	480/3	31.05/80	3700	SALES
RTU-2	170241C	8000	0.30	3.0	24432	184213	27	92205	900	1480	10.6/-	480/3	31.05/80	3700	SALES
RTU-3	170241C	8000	0.30	3.0	24432	184213	27	92205	900	1480	10.6/-	480/3	31.05/80	3700	SALES
RTU-4	170241C	1060	0.70	1.0	33993	25233	6	20490	70	-	13.0/-	480/3	12.10/75	700	OFFICES
RTU-5	170241C	2500	0.70	1.0	65986	51727	9	30735	155	-	11.8/-	480/3	17.50/75	1150	OFFICES
RTU-6	170241C	1200	0.70	1.0	30365	28685	6	20490	155	-	13.0/-	480/3	12.10/75	700	12 VOLT
RTU-7	170241C	2000	0.50	1.0	55007	44685	18	81470	100	-	13.0/-	480/3	28.30/70	750	ROADSHOP
RTU-8	170241C	5000	0.80	3.0	134224	103238	18	81470	155	-	11.2/-	480/3	34.00/70	3000	WAREHOUSE

- ONLY ACCEPTABLE MANUFACTURERS (FURNISHED BY OWNER) BRAND, SET, ROOFTOP UNIT NOTES FOR EQUIPMENT OPTIONS.
- ALL RTUs TO HAVE BELT-DRIVEN BLOWERS, FIELD ADJUST SUPPLY FAN RPM TO PROVIDE AIR QUANTITIES AS SCHEDULED ABOVE.
- RTU-1 thru RTU-3 TO BE FURNISHED WITH "CURBS PLUS INC" OUTDOOR ASSEMBLY HOOD, LPM-1410-15 WITH TREATED PROTECTIVE (MOUNTING).
- RTU-1 thru RTU-3 TO RECEIVE INSTALLATION KIT FOR CO2-DRIVEN DEMAND-CONTROLLED VENTILATION (DCV) (SEE ELECTRICAL DRAWINGS).
- SMOKE DETECTORS WITH SAMPLING TUBES TO BE FURNISHED & INSTALLED BY FIRE ALARM CONTRACTOR.

### FAN SCHEDULE

MARK	CFM	STATIC PRESSURE INCHES WC	APPROXIMATE FAN RPM	FAN TYPE	DAMPER	V / #	HP	MANUFACTURER / MODEL	REMARKS
EF-1	800	0.375	1150	CENTRIFUGAL	BACKDRAFT	120 / 1	0.23	GREENHECK / GB-08	SEE NOTES BELOW
EF-2	1000	0.390	1484	CENTRIFUGAL	BACKDRAFT	120 / 1	0.25	GREENHECK / GB-08	SEE NOTES BELOW
EF-3	1900	0.375	1311	CENTRIFUGAL	BACKDRAFT	120 / 1	0.50	GREENHECK / GB-131	SEE NOTES BELOW

- FANS FURNISHED BY OWNER.
- EF-1 thru EF-3 TO BE FURNISHED WITH ROOF CURB, BOLLARD BARS, AND DISCONNECT SWITCH.
- PROVIDE GASKET BETWEEN FAN BASE AND ROOF CURB (TYPICAL).
- EF-1 SHALL OPERATE CONTINUOUSLY DURING OCCUPIED HOURS.
- EF-2 SHALL BE OPERATED ON RISE IN SPACE TEMPERATURE. SET LINE VOLTAGE 1-INST AT 75 F.
- EF-3 TO BE OPERATED BY THERMISTAT. SEE ELECTRICAL DRAWINGS.

### ELECTRIC UNIT HEATER SCHEDULE

MARK	CFM @ 75 F	HEATING DATA	V / #	HP	FAN TYPE	MANUFACTURER MODEL	ACCESSORIES	REMARKS
		INPUT KW						
UH-1	700	10	JAL	480/3	1/30	PROPPELLER	TRANE UHCE-1030	SEE NOTES BELOW. WALL-MOUNTED IN WAREHOUSE.

- UNIT HEATER FURNISHED BY OWNER.
- UH-1 TO BE FURNISHED WITH UNIT-MOUNTED THERMISTAT & DISCONNECT SWITCH.

### AIR DISTRIBUTION DEVICE SCHEDULE

MARK	HECK	FACE	TYPE	STYLE	MARK/WOOD	DAMPER	FINISH	REMARKS
D1	8" x 8"	24x24	SUPPLY	CONCOYRIC CONE	TITUS/TMS	-	WHITE ENAMEL	LAT-IN
D2	8" x 8"	24x24	SUPPLY	CONCOYRIC CONE	TITUS/TMS	-	WHITE ENAMEL	LAT-IN
D3	10" x 4"	24x24	SUPPLY	CONCOYRIC CONE	TITUS/TMS	-	WHITE ENAMEL	LAT-IN
D4	12" x 4"	24x24	SUPPLY	CONCOYRIC CONE	TITUS/TMS	-	WHITE ENAMEL	LAT-IN
D5	8" x 8"	12x12	SUPPLY	CONCOYRIC CONE	TITUS/TMS-AA	-	WHITE ENAMEL	SURFACE MOUNT - TOILETS, VAULT
D6	48x18	42x17	SUPPLY	GRAB	TITUS/TMS	-	WHITE ENAMEL	DUCT MOUNT - WAREHOUSE
D7	18" x 10"	14x12	SUPPLY	LOUVERED	TITUS/330FL	-	WHITE ENAMEL	DUCT MOUNT - ROADSHOP
R1	8" x 8"	24x24	RETURN	PERFORATED	TITUS/PAR	-	WHITE ENAMEL	LAT-IN
R2	10" x 4"	24x24	RETURN	PERFORATED	TITUS/PAR	-	WHITE ENAMEL	LAT-IN
R3	12" x 4"	24x24	RETURN	PERFORATED	TITUS/PAR	-	WHITE ENAMEL	LAT-IN
R4	14" x 4"	24x24	RETURN	PERFORATED	TITUS/PAR	-	WHITE ENAMEL	LAT-IN
R5	18x18	24x24	RETURN	PERFORATED	TITUS/PAR	-	WHITE ENAMEL	LAT-IN
R6	8" x 8"	12x12	RETURN	CONCOYRIC CONE	TITUS/TMS-AA	-	WHITE ENAMEL	SURFACE MOUNT - VAULT
E1	8x4	8x8	EXHAUST	LOUVERED	TITUS/330FL	-	WHITE ENAMEL	SURFACE MOUNT
E2	10x8	12x10	EXHAUST	LOUVERED	TITUS/330FL	-	WHITE ENAMEL	SURFACE MOUNT

- DEVICES SHALL BE THIS, SIMILAR OR APPROVED EQUAL.

### FURNISHED BY OWNER PROGRAM

THE MECHANICAL CONTRACTOR SHALL PROVIDE THE MECHANICAL EQUIPMENT LIST FOR THE PROJECT. THE MECHANICAL CONTRACTOR SHALL PROVIDE THE MECHANICAL EQUIPMENT LIST FOR THE PROJECT. THE MECHANICAL CONTRACTOR SHALL PROVIDE THE MECHANICAL EQUIPMENT LIST FOR THE PROJECT.

PRODUCT	SUPPLIER	INSTALLED BY	OWNER SUPPLY	ELECTRICAL CONNECTION	SPEC SECTION
ELECTRIC ROOFTOP UNITS	OWNER	CONTRACTOR	CONTRACTOR	CONTRACTOR	13770
STRUCTURAL RTU CURBS	OWNER	CONTRACTOR	-	-	13770
ELECTRIC UNIT HEATER	OWNER	CONTRACTOR	CONTRACTOR	CONTRACTOR	13770

SUPPLIER FRAME CONTACT: JASON MULLIKSON PHONE: 804-486-4130

EXHAUST FANS	OWNER	CONTRACTOR	CONTRACTOR	CONTRACTOR	13770
SUPPLIER	APCO SUPPLY COMPANY CONTACT: JIM LADD PHONE: 878-245-5448				

1) SEE SPECIFICATIONS FOR ADDITIONAL INFORMATION.  
2) CONTRACTOR TO REFER TO SPECIFICATION SECTION 0330 FOR FBO REQUIREMENTS.

202265  
GASCO PROJECT MANAGERS  
202265  
GASCO PROJECT MANAGERS  
202265  
GASCO PROJECT MANAGERS

Handwritten signature and notes.

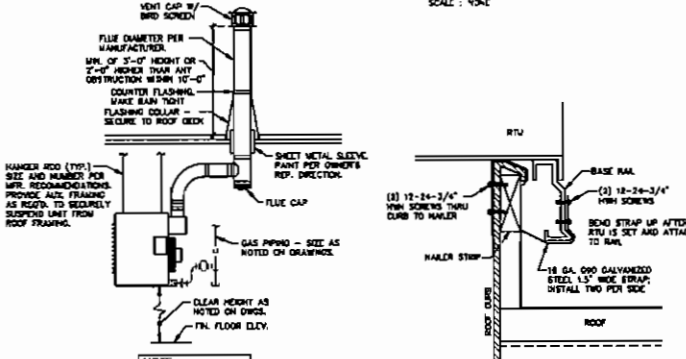
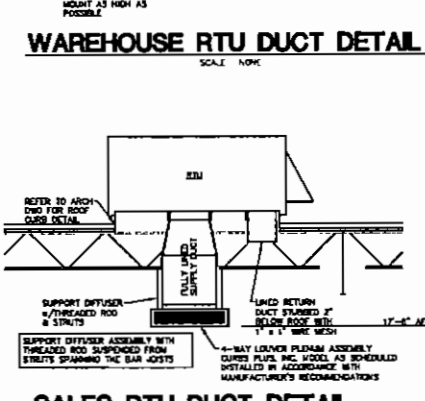
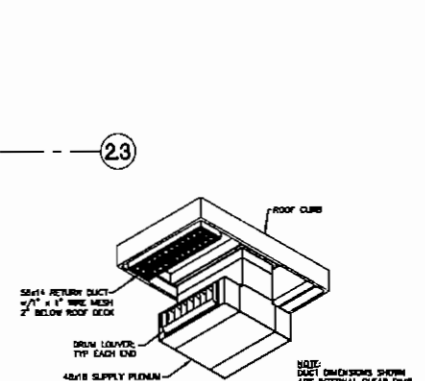
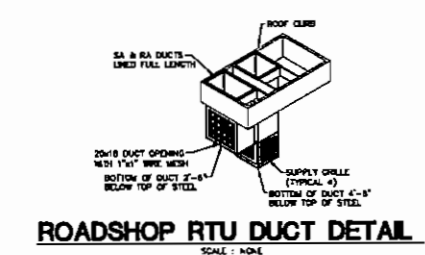
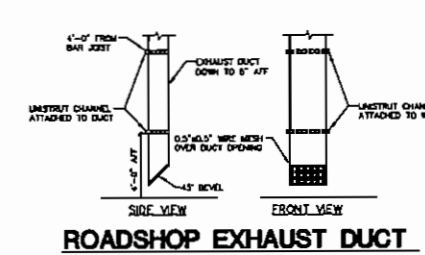
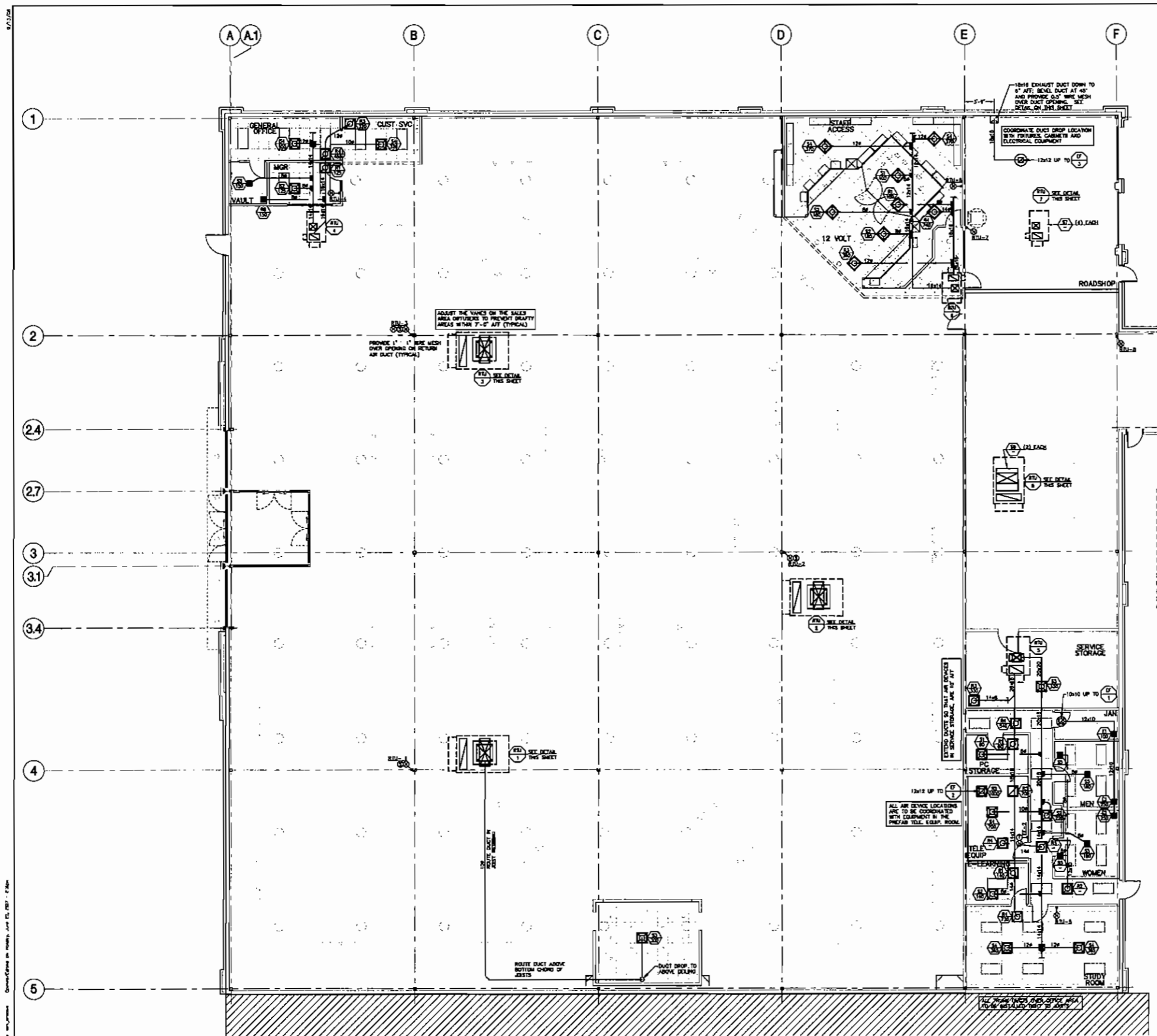
DATE	DESCRIPTION	BY
1/24/07	ISSUED FOR PERMIT	JM
1/24/07	ISSUED FOR PERMIT	JM
1/24/07	ISSUED FOR PERMIT	JM

CRUIT CITY STORES, INC. 1000 HAYLAND DRIVE, HUNTSVILLE, AL 35894-0001  
KISSAMBAE  
THE LOOP WEST SHOPPING CENTER  
HVAC ROOF PLAN & SCHEDULES



CRUIT CITY STORES, INC. 1000 HAYLAND DRIVE, HUNTSVILLE, AL 35894-0001  
KISSAMBAE  
THE LOOP WEST SHOPPING CENTER  
HVAC ROOF PLAN & SCHEDULES  
FL 4130  
H30

CONTRACT  
M1.0



**HVAC FLOOR PLAN**  
SCALE: 1/8"=1'-0"  
NORTH

206265  
CASCO PROJECT MANAGERS  
PROJECT MANAGER  
DATE: 06/27/2017  
DRAWN BY: J. L. BROWN  
CHECKED BY: J. L. BROWN  
DATE: 06/27/2017

NO.	DESCRIPTION	DATE	BY	CHECKED
1	ISSUED FOR PERMIT	06/27/17	JLB	JLB
2	ISSUED FOR CONSTRUCTION	06/27/17	JLB	JLB
3	ISSUED FOR CONSTRUCTION	06/27/17	JLB	JLB
4	ISSUED FOR CONSTRUCTION	06/27/17	JLB	JLB
5	ISSUED FOR CONSTRUCTION	06/27/17	JLB	JLB

NO.	DESCRIPTION	DATE	BY	CHECKED
1	ISSUED FOR PERMIT	06/27/17	JLB	JLB
2	ISSUED FOR CONSTRUCTION	06/27/17	JLB	JLB
3	ISSUED FOR CONSTRUCTION	06/27/17	JLB	JLB
4	ISSUED FOR CONSTRUCTION	06/27/17	JLB	JLB
5	ISSUED FOR CONSTRUCTION	06/27/17	JLB	JLB



CIRCUIT CITY STORES INC.  
8880 MAINTAIN DRIVE  
INDIANAPOLIS, IN 46261  
317-577-0000

PROJECT: THE LOOP WEST SHOPPING CENTER  
HVAC FLOOR PLAN & DETAILS

FL 4130  
1  
H30

CONTRACT  
M20