

DATE: 01/20/2010 10:58:11 AM

BUILDING DESIGN DATA
GENERAL BUILDING CODE: 2006 FLORIDA BUILDING CODE
MINIMUM (R-VALUES): 10 R-VALUE
METAL DECK: 30 PSF
CEILING MECHANICAL/ELECTRICAL/FIRE PROTECTION: 20 PSF
JOISTS: 30 PSF
TOTAL DEAD LOAD: 110 PSF

DESIGN WINDSPEEDS
DESIGN WIND SPEED (3 SECOND GUST) V = 110 MPH
DESIGN WIND PRESSURE (ASCE 7-02) q = 20.0 PSF
DESIGN WIND PRESSURE (ASCE 7-02) q = 20.0 PSF
DESIGN WIND PRESSURE (ASCE 7-02) q = 20.0 PSF

DESIGN WINDS WHO PRELIMINARY FOR COMPONENTS AND CLADDING (ASCE 7-02)
WIND DIRECTION: 0, 90, 180, 270 DEGREES
WIND SPEED: 110 MPH
WIND PRESSURE: 20.0 PSF

SEISMIC DESIGN DATA
SEISMIC USE GROUP: II
SEISMIC SPECTRAL RESPONSE COEFFICIENTS: Ss = 0.111, S1 = 0.243
SEISMIC DESIGN CATEGORY: B
SEISMIC DESIGN CATEGORY: B

FOUNDATION, SLAB-ON-GRADE - GENERAL
1. THE FOUNDATION HAS BEEN DESIGNED IN ACCORDANCE WITH THE RECOMMENDATIONS MADE IN THE REPORT OF SUBSEQUENT INVESTIGATION AND GEOTECHNICAL ANALYSIS...
2. SPECIAL FOOTINGS SHALL BEAR ON SOIL CAPABLE OF SUSTAINING A NET ALLOWABLE BEARING CAPACITY OF 3.0 TSF...

FOUNDATIONS, SLAB-ON-GRADE - GENERAL
1. THE FOUNDATION HAS BEEN DESIGNED IN ACCORDANCE WITH THE RECOMMENDATIONS MADE IN THE REPORT OF SUBSEQUENT INVESTIGATION AND GEOTECHNICAL ANALYSIS...
2. SPECIAL FOOTINGS SHALL BEAR ON SOIL CAPABLE OF SUSTAINING A NET ALLOWABLE BEARING CAPACITY OF 3.0 TSF...

CONCRETE
1. ALL CONCRETE SHALL BE NORMAL-WEIGHT (DENSITY=145 PCF) AND SHALL HAVE A 28-DAY COMPRESSIVE STRENGTH IN ACCORDANCE WITH THE FOLLOWING:
ALL FOUNDATIONS, MEMBER SLABS: 4000 PSI
ALL OTHER CONCRETE (WALLS): 3000 PSI

CONCRETE
1. ALL CONCRETE SHALL BE NORMAL-WEIGHT (DENSITY=145 PCF) AND SHALL HAVE A 28-DAY COMPRESSIVE STRENGTH IN ACCORDANCE WITH THE FOLLOWING:
ALL FOUNDATIONS, MEMBER SLABS: 4000 PSI
ALL OTHER CONCRETE (WALLS): 3000 PSI

CONCRETE
1. ALL CONCRETE SHALL BE NORMAL-WEIGHT (DENSITY=145 PCF) AND SHALL HAVE A 28-DAY COMPRESSIVE STRENGTH IN ACCORDANCE WITH THE FOLLOWING:
ALL FOUNDATIONS, MEMBER SLABS: 4000 PSI
ALL OTHER CONCRETE (WALLS): 3000 PSI

CONCRETE
1. ALL CONCRETE SHALL BE NORMAL-WEIGHT (DENSITY=145 PCF) AND SHALL HAVE A 28-DAY COMPRESSIVE STRENGTH IN ACCORDANCE WITH THE FOLLOWING:
ALL FOUNDATIONS, MEMBER SLABS: 4000 PSI
ALL OTHER CONCRETE (WALLS): 3000 PSI

CONCRETE
1. ALL CONCRETE SHALL BE NORMAL-WEIGHT (DENSITY=145 PCF) AND SHALL HAVE A 28-DAY COMPRESSIVE STRENGTH IN ACCORDANCE WITH THE FOLLOWING:
ALL FOUNDATIONS, MEMBER SLABS: 4000 PSI
ALL OTHER CONCRETE (WALLS): 3000 PSI

CONCRETE
1. ALL CONCRETE SHALL BE NORMAL-WEIGHT (DENSITY=145 PCF) AND SHALL HAVE A 28-DAY COMPRESSIVE STRENGTH IN ACCORDANCE WITH THE FOLLOWING:
ALL FOUNDATIONS, MEMBER SLABS: 4000 PSI
ALL OTHER CONCRETE (WALLS): 3000 PSI

STEEL JOISTS AND JOIST GIRDERS
1. ALL STEEL JOISTS SHALL BE DESIGNER FABRICATED AND DESIGNED IN ACCORDANCE WITH THE STANDARD SPECIFICATIONS FOR OPEN STEEL JOISTS, 10TH EDITION (AISC), AND JOIST GIRDERS WITH THE STANDARD SPECIFICATION FOR JOIST GIRDERS (AISC), OF THE AISC STEEL MANUAL (10th)

STEEL JOISTS AND JOIST GIRDERS
1. ALL STEEL JOISTS SHALL BE DESIGNER FABRICATED AND DESIGNED IN ACCORDANCE WITH THE STANDARD SPECIFICATIONS FOR OPEN STEEL JOISTS, 10TH EDITION (AISC), AND JOIST GIRDERS WITH THE STANDARD SPECIFICATION FOR JOIST GIRDERS (AISC), OF THE AISC STEEL MANUAL (10th)

STEEL JOISTS AND JOIST GIRDERS
1. ALL STEEL JOISTS SHALL BE DESIGNER FABRICATED AND DESIGNED IN ACCORDANCE WITH THE STANDARD SPECIFICATIONS FOR OPEN STEEL JOISTS, 10TH EDITION (AISC), AND JOIST GIRDERS WITH THE STANDARD SPECIFICATION FOR JOIST GIRDERS (AISC), OF THE AISC STEEL MANUAL (10th)

STEEL JOISTS AND JOIST GIRDERS
1. ALL STEEL JOISTS SHALL BE DESIGNER FABRICATED AND DESIGNED IN ACCORDANCE WITH THE STANDARD SPECIFICATIONS FOR OPEN STEEL JOISTS, 10TH EDITION (AISC), AND JOIST GIRDERS WITH THE STANDARD SPECIFICATION FOR JOIST GIRDERS (AISC), OF THE AISC STEEL MANUAL (10th)

STEEL JOISTS AND JOIST GIRDERS
1. ALL STEEL JOISTS SHALL BE DESIGNER FABRICATED AND DESIGNED IN ACCORDANCE WITH THE STANDARD SPECIFICATIONS FOR OPEN STEEL JOISTS, 10TH EDITION (AISC), AND JOIST GIRDERS WITH THE STANDARD SPECIFICATION FOR JOIST GIRDERS (AISC), OF THE AISC STEEL MANUAL (10th)

STEEL JOISTS AND JOIST GIRDERS
1. ALL STEEL JOISTS SHALL BE DESIGNER FABRICATED AND DESIGNED IN ACCORDANCE WITH THE STANDARD SPECIFICATIONS FOR OPEN STEEL JOISTS, 10TH EDITION (AISC), AND JOIST GIRDERS WITH THE STANDARD SPECIFICATION FOR JOIST GIRDERS (AISC), OF THE AISC STEEL MANUAL (10th)

SPECIAL INSPECTIONS
1. THE SPECIAL INSPECTOR SHALL BE LICENSED BY THE STATE OF FLORIDA AND SHALL BE A MEMBER OF THE PROFESSION OF SPECIAL INSPECTORS AS REQUIRED BY THE FLORIDA STATUTES AND THE STANDARD SPECIFICATIONS FOR SPECIAL INSPECTORS (AISC), OF THE AISC STEEL MANUAL (10th)

SPECIAL INSPECTIONS
1. THE SPECIAL INSPECTOR SHALL BE LICENSED BY THE STATE OF FLORIDA AND SHALL BE A MEMBER OF THE PROFESSION OF SPECIAL INSPECTORS AS REQUIRED BY THE FLORIDA STATUTES AND THE STANDARD SPECIFICATIONS FOR SPECIAL INSPECTORS (AISC), OF THE AISC STEEL MANUAL (10th)

SPECIAL INSPECTIONS
1. THE SPECIAL INSPECTOR SHALL BE LICENSED BY THE STATE OF FLORIDA AND SHALL BE A MEMBER OF THE PROFESSION OF SPECIAL INSPECTORS AS REQUIRED BY THE FLORIDA STATUTES AND THE STANDARD SPECIFICATIONS FOR SPECIAL INSPECTORS (AISC), OF THE AISC STEEL MANUAL (10th)

SPECIAL INSPECTIONS
1. THE SPECIAL INSPECTOR SHALL BE LICENSED BY THE STATE OF FLORIDA AND SHALL BE A MEMBER OF THE PROFESSION OF SPECIAL INSPECTORS AS REQUIRED BY THE FLORIDA STATUTES AND THE STANDARD SPECIFICATIONS FOR SPECIAL INSPECTORS (AISC), OF THE AISC STEEL MANUAL (10th)

SPECIAL INSPECTIONS
1. THE SPECIAL INSPECTOR SHALL BE LICENSED BY THE STATE OF FLORIDA AND SHALL BE A MEMBER OF THE PROFESSION OF SPECIAL INSPECTORS AS REQUIRED BY THE FLORIDA STATUTES AND THE STANDARD SPECIFICATIONS FOR SPECIAL INSPECTORS (AISC), OF THE AISC STEEL MANUAL (10th)

SPECIAL INSPECTIONS
1. THE SPECIAL INSPECTOR SHALL BE LICENSED BY THE STATE OF FLORIDA AND SHALL BE A MEMBER OF THE PROFESSION OF SPECIAL INSPECTORS AS REQUIRED BY THE FLORIDA STATUTES AND THE STANDARD SPECIFICATIONS FOR SPECIAL INSPECTORS (AISC), OF THE AISC STEEL MANUAL (10th)

STRUCTURAL & MISC STEEL LIST
PRODUCT: STEEL BEAMS AND COLUMNS, LACER WITH GAGE TO ROOF HATCH, DECK SUPPORT ANGLE WITH ANCHOR BOLTS, MISCELLANEOUS STEEL FABRICATIONS, BENT PLATE DOOR FRAME, INTERIOR PIPE ROLLERS, CH-CHANNEL STEEL/WALVE S/D ON DRAWINGS, PIPE SUPPORTS FOR CH-PIPE LINE, STEEL SUPPORT FRAMES AT ENTRANCE, ROOF HATCH SUPPORT BEAM, DRAG STRUT PLATES/ANGLE, GALVANNEED G-50 SUPPORT, ANCHOR BOLTS FOR STEEL COLUMNS, GALVANNEED FEATHERS ON ALL STEEL WALL PROJECTIONS (DOES NOT INCLUDE LIFTING PLATES)

STRUCTURAL & MISC STEEL LIST
PRODUCT: STEEL BEAMS AND COLUMNS, LACER WITH GAGE TO ROOF HATCH, DECK SUPPORT ANGLE WITH ANCHOR BOLTS, MISCELLANEOUS STEEL FABRICATIONS, BENT PLATE DOOR FRAME, INTERIOR PIPE ROLLERS, CH-CHANNEL STEEL/WALVE S/D ON DRAWINGS, PIPE SUPPORTS FOR CH-PIPE LINE, STEEL SUPPORT FRAMES AT ENTRANCE, ROOF HATCH SUPPORT BEAM, DRAG STRUT PLATES/ANGLE, GALVANNEED G-50 SUPPORT, ANCHOR BOLTS FOR STEEL COLUMNS, GALVANNEED FEATHERS ON ALL STEEL WALL PROJECTIONS (DOES NOT INCLUDE LIFTING PLATES)

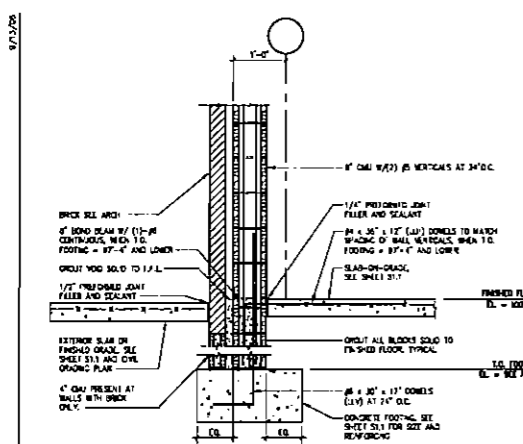
STRUCTURAL & MISC STEEL LIST
PRODUCT: STEEL BEAMS AND COLUMNS, LACER WITH GAGE TO ROOF HATCH, DECK SUPPORT ANGLE WITH ANCHOR BOLTS, MISCELLANEOUS STEEL FABRICATIONS, BENT PLATE DOOR FRAME, INTERIOR PIPE ROLLERS, CH-CHANNEL STEEL/WALVE S/D ON DRAWINGS, PIPE SUPPORTS FOR CH-PIPE LINE, STEEL SUPPORT FRAMES AT ENTRANCE, ROOF HATCH SUPPORT BEAM, DRAG STRUT PLATES/ANGLE, GALVANNEED G-50 SUPPORT, ANCHOR BOLTS FOR STEEL COLUMNS, GALVANNEED FEATHERS ON ALL STEEL WALL PROJECTIONS (DOES NOT INCLUDE LIFTING PLATES)

STRUCTURAL & MISC STEEL LIST
PRODUCT: STEEL BEAMS AND COLUMNS, LACER WITH GAGE TO ROOF HATCH, DECK SUPPORT ANGLE WITH ANCHOR BOLTS, MISCELLANEOUS STEEL FABRICATIONS, BENT PLATE DOOR FRAME, INTERIOR PIPE ROLLERS, CH-CHANNEL STEEL/WALVE S/D ON DRAWINGS, PIPE SUPPORTS FOR CH-PIPE LINE, STEEL SUPPORT FRAMES AT ENTRANCE, ROOF HATCH SUPPORT BEAM, DRAG STRUT PLATES/ANGLE, GALVANNEED G-50 SUPPORT, ANCHOR BOLTS FOR STEEL COLUMNS, GALVANNEED FEATHERS ON ALL STEEL WALL PROJECTIONS (DOES NOT INCLUDE LIFTING PLATES)

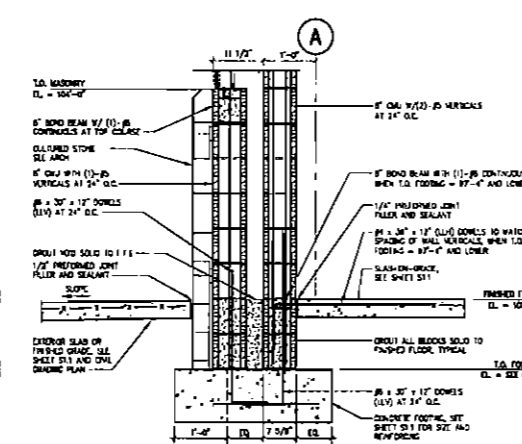
STRUCTURAL & MISC STEEL LIST
PRODUCT: STEEL BEAMS AND COLUMNS, LACER WITH GAGE TO ROOF HATCH, DECK SUPPORT ANGLE WITH ANCHOR BOLTS, MISCELLANEOUS STEEL FABRICATIONS, BENT PLATE DOOR FRAME, INTERIOR PIPE ROLLERS, CH-CHANNEL STEEL/WALVE S/D ON DRAWINGS, PIPE SUPPORTS FOR CH-PIPE LINE, STEEL SUPPORT FRAMES AT ENTRANCE, ROOF HATCH SUPPORT BEAM, DRAG STRUT PLATES/ANGLE, GALVANNEED G-50 SUPPORT, ANCHOR BOLTS FOR STEEL COLUMNS, GALVANNEED FEATHERS ON ALL STEEL WALL PROJECTIONS (DOES NOT INCLUDE LIFTING PLATES)

STRUCTURAL & MISC STEEL LIST
PRODUCT: STEEL BEAMS AND COLUMNS, LACER WITH GAGE TO ROOF HATCH, DECK SUPPORT ANGLE WITH ANCHOR BOLTS, MISCELLANEOUS STEEL FABRICATIONS, BENT PLATE DOOR FRAME, INTERIOR PIPE ROLLERS, CH-CHANNEL STEEL/WALVE S/D ON DRAWINGS, PIPE SUPPORTS FOR CH-PIPE LINE, STEEL SUPPORT FRAMES AT ENTRANCE, ROOF HATCH SUPPORT BEAM, DRAG STRUT PLATES/ANGLE, GALVANNEED G-50 SUPPORT, ANCHOR BOLTS FOR STEEL COLUMNS, GALVANNEED FEATHERS ON ALL STEEL WALL PROJECTIONS (DOES NOT INCLUDE LIFTING PLATES)

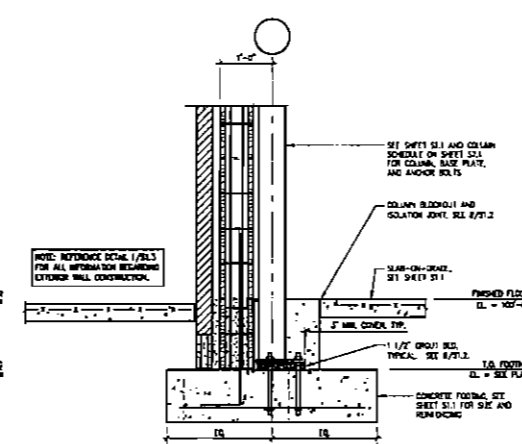
ORLANDO CITY STORES INC.
1000 W. UNIVERSITY BLVD. SUITE 1000
ORLANDO, FL 32817
TEL: 407.241.1111
WWW.LDIREPRO.COM
CONTRACT NO. 4130
H30



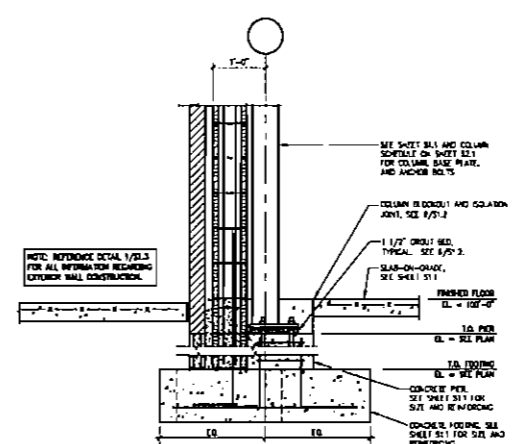
1 WALL FOOTING DETAIL
S1.3 SCALE: 3/4\"/>



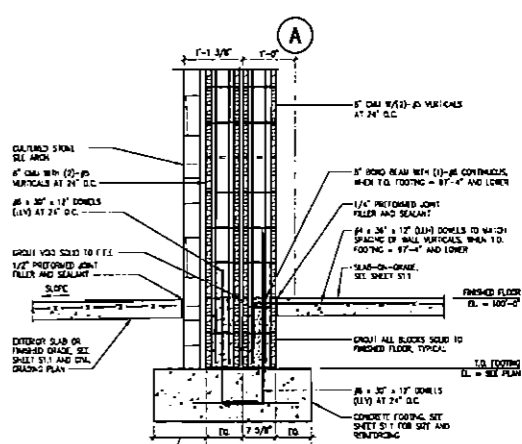
2 WALL FOOTING DETAIL
S1.3 SCALE: 3/4\"/>



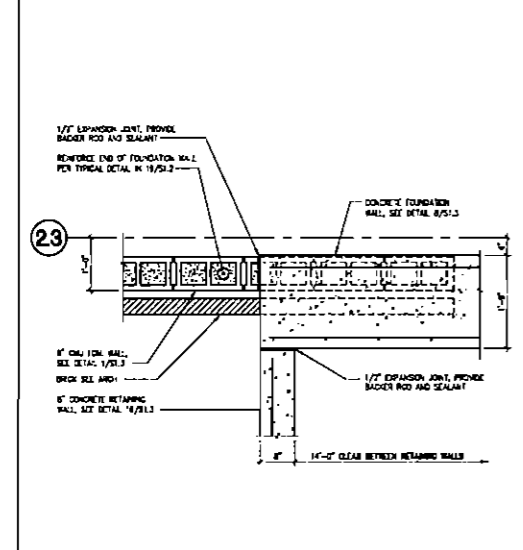
3 COLUMN FOOTING DETAIL
S1.3 SCALE: 3/4\"/>



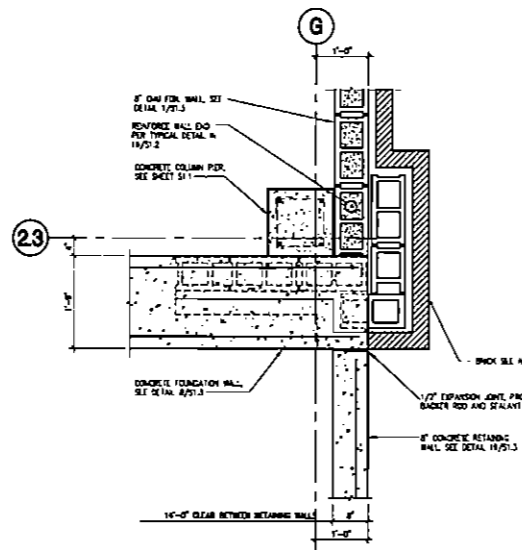
4 COLUMN/PIER FOOTING DETAIL
S1.3 SCALE: 3/4\"/>



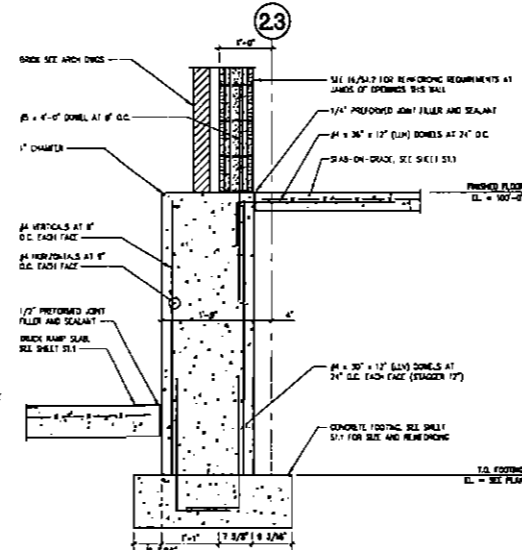
5 PILASTER FOOTING DETAIL
S1.3 SCALE: 3/4\"/>



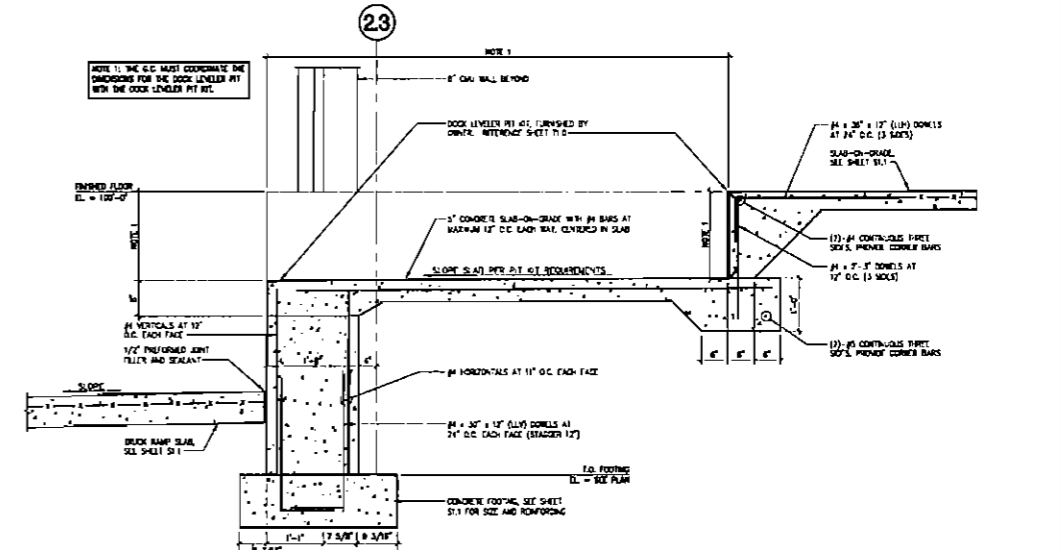
6 WALL INTERSECTION PLAN DETAIL
S1.3 SCALE: 3/4\"/>



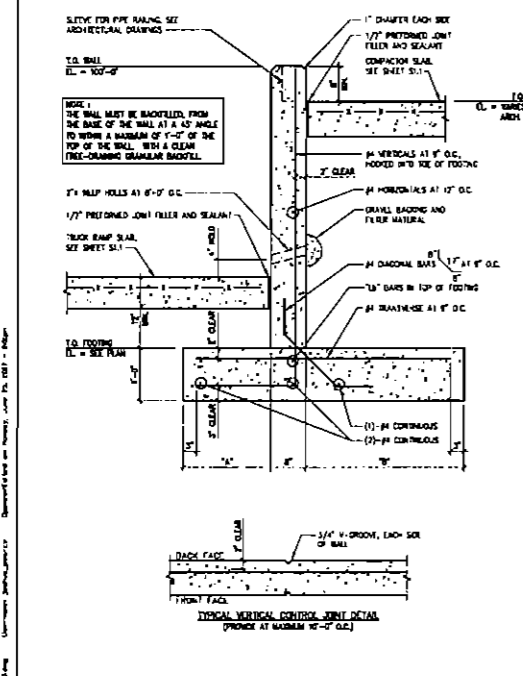
7 WALL INTERSECTION PLAN DETAIL
S1.3 SCALE: 3/4\"/>



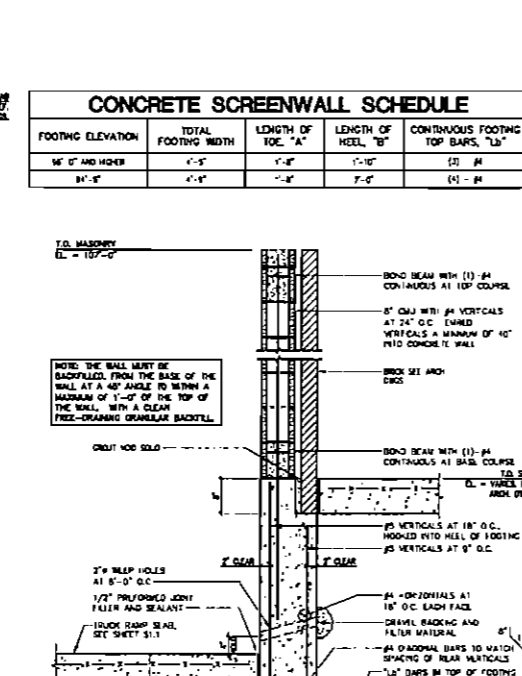
8 WALL FOOTING DETAIL
S1.3 SCALE: 3/4\"/>



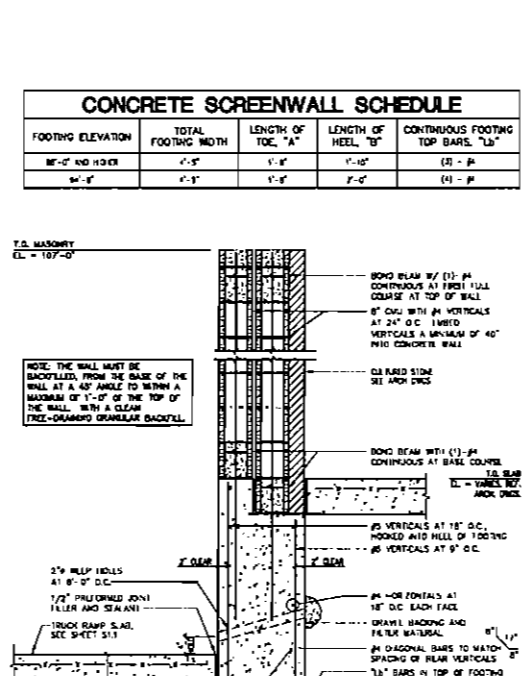
9 TRUCK DOCK FOOTING DETAIL
S1.3 SCALE: 3/4\"/>



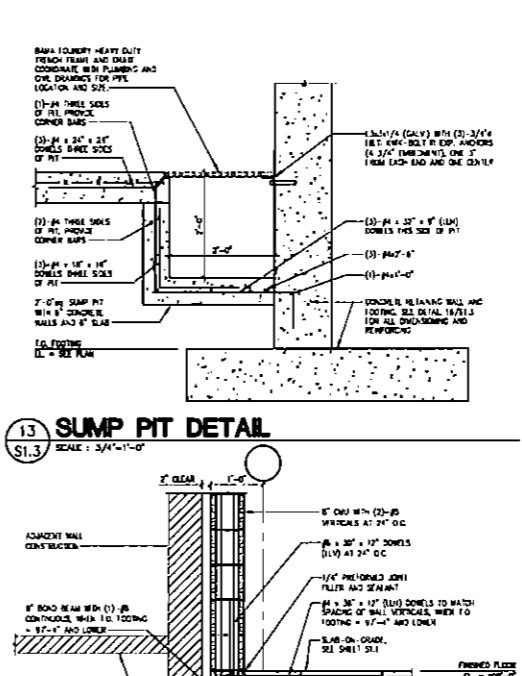
16 RETAINING WALL DETAIL
S1.3 SCALE: 3/4\"/>



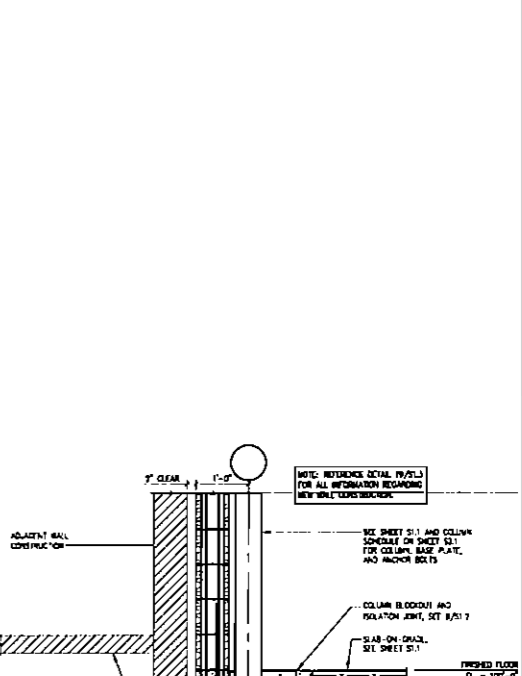
17 SCREENWALL DETAIL
S1.3 SCALE: 3/4\"/>



18 SCREENWALL DETAIL
S1.3 SCALE: 3/4\"/>



13 SUMP PIT DETAIL
S1.3 SCALE: 3/4\"/>



10 WALL FOOTING DETAIL
S1.3 SCALE: 3/4\"/>

CONCRETE SCREENWALL SCHEDULE

FOOTING ELEVATION	TOTAL FOOTING WIDTH	LENGTH OF TOE, 'A'	LENGTH OF HEEL, 'B'	CONTINUOUS FOOTING TOP BARS, 'Lb'
10'-0\"/>				
11'-0\"/>				

CONCRETE SCREENWALL SCHEDULE

FOOTING ELEVATION	TOTAL FOOTING WIDTH	LENGTH OF TOE, 'A'	LENGTH OF HEEL, 'B'	CONTINUOUS FOOTING TOP BARS, 'Lb'
10'-0\"/>				
11'-0\"/>				

CONCRETE RETAINING WALL SCHEDULE

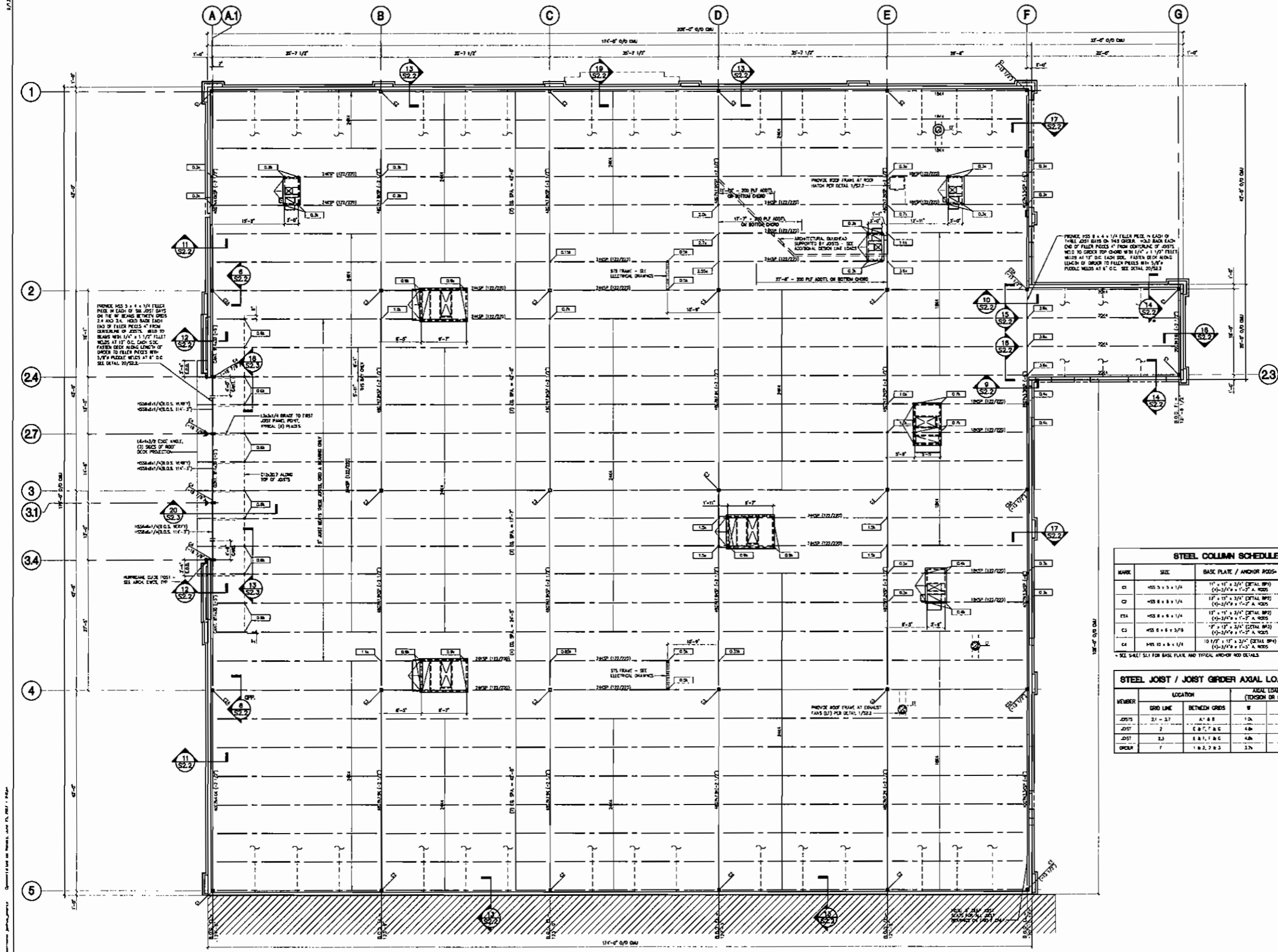
FOOTING ELEVATION	TOTAL FOOTING WIDTH	LENGTH OF TOE, 'A'	LENGTH OF HEEL, 'B'	CONTINUOUS FOOTING TOP BARS, 'Lb'
10'-0\"/>				
11'-0\"/>				

206286 CASCO PRODUCT BRANDS

ORLANDO
KISSIMEE
THE LOOP WEST SHOPPING CENTER
FOUNDATION DETAILS

Circuit City Stores Inc.
FL 4130
H30

CONTRACT
S1.3



ROOF FRAMING PLAN NOTES:

- SEE SHEETS S01 AND S02 FOR GENERAL NOTES AND PHYSICAL FRAMING DETAILS.
- BOTTOM OF DECK (E.O.D.) SHALL BE TOP OF JOIST / LAGERSIDE OF METAL DECK. THE ELEVATION OF THE TOP OF STEEL OF COLUMN, BEAMS, AND JOIST GIRDERS ARE INDICATED -1'- FROM BOTTOM OF DECK, UNLESS NOTED OTHERWISE. ALL OTHER ELEVATIONS ARE MEASURED FROM A RELATIVE FINISHED FLOOR ELEVATION = 105'-0\"/>

NOTE:
ALL JOIST, JOIST BRACING, JOIST GIRDERS, AND JOIST GIRDERS SUPPORT SHALL BE DESIGNED BY THE JOIST MANUFACTURER FOR THE SPLIT LOADINGS SPECIFIED ON SHEET S01.

STEEL COLUMN SCHEDULE

MARK	SIZE	BASIC PLATE / ANCHOR ROGS-	CAP PLATE
C1	HSS 8 x 8 x 1/4	11" x 11" x 3/4" (DETAIL RPS) (1)-3/4" x 11" x 2" A. WOOD	9 1/2" x 8" x 3/4"
C2	HSS 8 x 8 x 1/4	11" x 11" x 3/4" (DETAIL RPS) (1)-3/4" x 11" x 2" A. WOOD	10 1/2" x 8" x 3/4"
C3A	HSS 8 x 8 x 1/4	11" x 11" x 3/4" (DETAIL RPS) (1)-3/4" x 11" x 2" A. WOOD	14" x 8" x 3/4"
C3	HSS 8 x 8 x 3/8	11" x 11" x 3/4" (DETAIL RPS) (1)-3/4" x 11" x 2" A. WOOD	14" x 8" x 3/4"
C4	HSS 10 x 8 x 1/4	10 1/2" x 11" x 3/4" (DETAIL RPS) (1)-3/4" x 11" x 2" A. WOOD	10" x 14" x 3/4"

- SEE SHEET S01 FOR BASIC PLATE AND TYPICAL ANCHOR ROD DETAILS.

STEEL JOIST / JOIST GIRDER AXIAL LOAD SCHEDULE

MEMBER	GRID LINE	LOCATION	AXIAL LOAD IN TOP CHORD (TENSION OR COMPRESSION), kips		
			W	E	Em
JOIST	21 - 22	A'-B-B	1.0	-	-
JOIST	2	B'-C-C & E	4.8	-	-
JOIST	2,3	B'-C-C & E	4.8	-	-
JOIST	7	B'-C-C & E	2.2	-	-

STEEL COLUMN SCHEDULE

MARK	SIZE	BASIC PLATE / ANCHOR ROGS-	CAP PLATE
C1	HSS 8 x 8 x 1/4	11" x 11" x 3/4" (DETAIL RPS) (1)-3/4" x 11" x 2" A. WOOD	9 1/2" x 8" x 3/4"
C2	HSS 8 x 8 x 1/4	11" x 11" x 3/4" (DETAIL RPS) (1)-3/4" x 11" x 2" A. WOOD	10 1/2" x 8" x 3/4"
C3A	HSS 8 x 8 x 1/4	11" x 11" x 3/4" (DETAIL RPS) (1)-3/4" x 11" x 2" A. WOOD	14" x 8" x 3/4"
C3	HSS 8 x 8 x 3/8	11" x 11" x 3/4" (DETAIL RPS) (1)-3/4" x 11" x 2" A. WOOD	14" x 8" x 3/4"
C4	HSS 10 x 8 x 1/4	10 1/2" x 11" x 3/4" (DETAIL RPS) (1)-3/4" x 11" x 2" A. WOOD	10" x 14" x 3/4"

- SEE SHEET S01 FOR BASIC PLATE AND TYPICAL ANCHOR ROD DETAILS.

STEEL JOIST / JOIST GIRDER AXIAL LOAD SCHEDULE

MEMBER	GRID LINE	LOCATION	AXIAL LOAD IN TOP CHORD (TENSION OR COMPRESSION), kips		
			W	E	Em
JOIST	21 - 22	A'-B-B	1.0	-	-
JOIST	2	B'-C-C & E	4.8	-	-
JOIST	2,3	B'-C-C & E	4.8	-	-
JOIST	7	B'-C-C & E	2.2	-	-

NOTE:
ALL ELEVATIONS ARE GIVEN IN RELATION TO 2.0' ELEVATION AT 200' ON GRADE OF 105'-0". REFERENCE THE SITE SPECIFIC ONE DRAWING PLAN FOR THE ACTUAL T.T. ELEVATION ABOVE SEA LEVEL.

ROOF FRAMING PLAN
SCALE: 1/8" = 1'-0"

NOTE:
ALL ELEVATIONS ARE GIVEN IN RELATION TO 2.0' ELEVATION AT 200' ON GRADE OF 105'-0". REFERENCE THE SITE SPECIFIC ONE DRAWING PLAN FOR THE ACTUAL T.T. ELEVATION ABOVE SEA LEVEL.

NORTH

206286
PROJECT MANAGER

Circuit City

ORLANDO
KISSIMEE
THE LOOP WEST SHOPPING CENTER
ROOF FRAMING PLAN

FL 4130
H30

CONTRACT
S2.1

