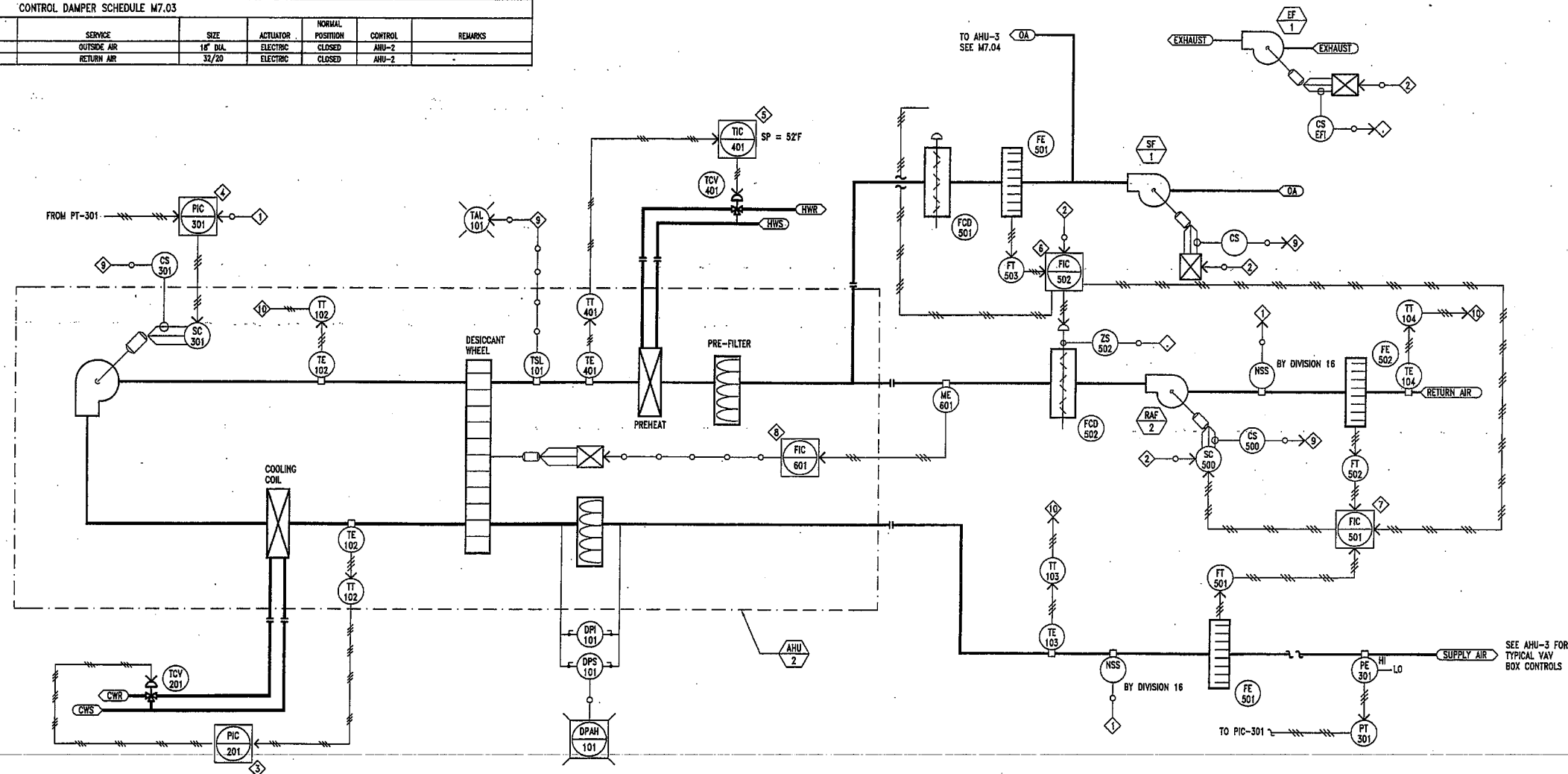


CONTROL VALVE SCHEDULE M7.02											
MARK	EQUIPMENT SERVED	SERVICE	LB/HR STEAM	GPM	DIA IN.	Cv	TYPE	# PORTS	FAILED POSITION	CLOSE-OFF PSI	REMARKS
TCV-0A1	AHU-0A	STEAM (100 PHS)	200	---	8	---	GLOBE	2	CLOSED	120	
TCV-201A	AHU-1	CHILLED WATER	---	80	1-1/2"	25	GLOBE	3	OPEN TO COIL	35	
TCV-201B	AHU-1	CHILLED WATER	---	80	1-1/2"	25	GLOBE	3	OPEN TO COIL	35	
TCV-401	AHU-1	HOT WATER	---	42	1-1/4"	18	GLOBE	2	CLOSED	35	
TCV-801	AHU-1 HUMIDIFIER	STEAM (12 PHS)	180	---	1/2"	---	GLOBE	2	CLOSED	35	FURNISHED WITH HUMIDIFIER
TCV 18U	HUMIDIFIER MAKE-UP	DEIONIZED WATER	---	1	1/2"	---	---	---	---	---	FURNISHED WITH HUMIDIFIER

CONTROL DAMPER SCHEDULE M7.02							
MARK	EQUIPMENT SERVED	SERVICE	SIZE	ACTUATOR	NORMAL POSITION	CONTROL	REMARKS
FCD-0A1	AHU 0A-1	OUTSIDE AIR INTAKE	36/18	ELECTRIC	CLOSED	AHU-0A-1	2-POSITION
FCD-101	AHU-1	SUPPLY, ISOLATION	48" DIA.	ELECTRIC	CLOSED	AHU-1	2-POSITION, END SWITCH
FCD-102	AHU-1	RETURN, ISOLATION	36/24	ELECTRIC	CLOSED	AHU-1	2-POSITION, END SWITCH
FCD-103	AHU-1	RETURN, ISOLATION	60/22	ELECTRIC	CLOSED	AHU-1	2-POSITION, END SWITCH
FCD-104	AHU-1	OA, ISOLATION	24/20	ELECTRIC	CLOSED	AHU-1	2-POSITION, END SWITCH

CONTROL VALVE SCHEDULE M7.03									
MARK	EQUIPMENT SERVED	SERVICE	GPM	DIA IN.	Cv	TYPE	# PORTS	FAILED POSITION	CLOSE-OFF PSI
TCV-201	AHU-2	CHILLED WATER	68	1-1/2"	25	GLOBE	3	CLOSED TO COIL	35
TCV-401	AHU-2	HOT WATER	17	1"	10	GLOBE	3	OPEN TO COIL	35

CONTROL DAMPER SCHEDULE M7.03							
MARK	EQUIPMENT SERVED	SERVICE	SIZE	ACTUATOR	NORMAL POSITION	CONTROL	REMARKS
FCD-501	AHU-2	OUTSIDE AIR	18" DIA.	ELECTRIC	CLOSED	AHU-2	
FCD-502	AHU-2	RETURN AIR	32/20	ELECTRIC	CLOSED	AHU-2	



AHU-2 CONTROL DIAGRAM
NOT TO SCALE

AHU-2 INTERLOCK/SEQUENCE NOTES

- 1 SUPPLY FAN TO BE ENABLED THROUGH BUILDING AUTOMATION SYSTEM (BAS), AND IS INTENDED TO BE ENABLED 24/7. BAS CONTRACTOR TO CONSULT WITH OWNER TO VERIFY OPERATIONAL SCHEDULE. START SEQUENCE SUBJECT TO FIRE ALARM RELAY AND SMOKE DETECTOR CONTACT.
- 2 RETURN AIR FAN RAF-2, EXHAUST FAN EF-1, OUTSIDE AIR FAN SF-1, RETURN AIR DAMPER FCD-502 AND OUTSIDE AIR DAMPER FCD-501 TO BE INTERLOCKED WITH SUPPLY FAN.
- 3 DISCHARGE AIR TEMPERATURE AT COOLING COIL SHALL BE CONTROLLED THROUGH LOOP TIC-201 BASED ON DISCHARGE AIR TEMPERATURE INPUT FROM TT-201. DISCHARGE AIR TEMPERATURE CONTROL LOOP TO MODULATE TEMPERATURE CONTROL VALVE TCV-201 TO MAINTAIN SET POINT:
 - a. OCCUPIED: CONTROL TO SETPOINT INDICATED (ADJUSTABLE) WITH A DISCHARGE TEMPERATURE RESET (UP TO 55°F MAXIMUM) BASED ON COOLING REQUIREMENTS OF THE VAV TERMINALS SERVED FROM AHU-2
 - b. UNOCCUPIED: CONTROL TO SETPOINT 55°F (ADJUSTABLE) WITH A DISCHARGE TEMPERATURE RESET (UP TO 59°F MAXIMUM) BASED ON COOLING REQUIREMENTS OF THE VAV TERMINALS SERVED FROM AHU-2
- 4 DISCHARGE STATIC PRESSURE SHALL BE MAINTAINED BY LOOP PIC-301 BASED ON STATIC PRESSURE SET-POINT INPUT FROM PT-301. PROVIDE DUCT MOUNTED MAGNETIC GAUGE ADJACENT TO PT-301. OUTPUT FROM PIC-100 SHALL BE TO VARIABLE FREQUENCY DRIVE SC-301.
- 5 DISCHARGE AIR TEMPERATURE FROM PREHEAT COIL SHALL BE CONTROLLED THROUGH LOOP TIC-401 BASED ON DISCHARGE AIR TEMPERATURE INPUT FROM TT-401. DISCHARGE AIR TEMPERATURE CONTROL LOOP TO MODULATE TEMPERATURE CONTROL VALVE TCV-401 TO MAINTAIN SET POINT.
- 6 OUTSIDE AIR CONTROL LOOP FIC-502 TO ACCEPT INPUT FROM OUTSIDE FLOW TRANSMITTER FT-503 AND MODULATE OUTSIDE AIR DAMPER FCD-501 FULLY OPEN AND RETURN AIR DAMPER FCD-502 PARTIALLY CLOSED TO MAINTAIN OUTSIDE AIR SET POINT.
- 7 RETURN AIR FLOW LOOP FIC-501 TO ACCEPT INPUT FROM RETURN AIR FT-502 AND SUPPLY AIR FT-501 AND SOFTWARE DATA TRANSFER FROM FIC-502 TO MODULATE RETURN AIR FAN FOR A RETURN AIR FLOW OFFSET EQUAL TO THE SUPPLY AIR FLOW LESS OUTSIDE AIR FLOW LESS 150 CFM (ADJUSTABLE) FOR SPACE PRESSURIZATION.
- 8 HUMIDITY CONTROL LOOP MC-601 TO ENABLE THE TRANE CDO DESICCANT WHEEL WHENEVER THE RETURN AIR RELATIVE HUMIDITY IS ABOVE SETPOINT, DISABLE THE WHEEL WHEN RETURN AIR RELATIVE HUMIDITY FALLS BELOW 40%. SEQUENCE FOR BOTH OCCUPIED AND UNOCCUPIED PERIODS.
- 9 PROVIDE DIGITAL INPUT TO DDC FOR STATUS. PROVIDE ALARM ON FAILURE OR OUT OF RANGE CONDITION
- 10 PROVIDE ANALOG INPUT TO DDC FOR SYSTEM STATUS AND MONITORING. WHERE INDICATED, PROVIDE ALARM FOR OUT OF RANGE CONDITION.



BIRCHFIELD PENNELL & ASSOCIATES
2805 Crivident Avenue, Suite 200
Birmingham, AL 35209
Phone: 205.933.3319
Fax: 205.979.3368
www.bpa.net



JACKSON SURGERY CENTER

Revision	Date

Drawn: 07.27.07
 Design Title: AHU-2 CONTROL DIAGRAM
 Design by: HBS
 Check by: TLT
 BPA Project No.: 55-06
 CAD File No.:
 Sheet: 79 of 94
 Drawing No.:

Hattner, Hornsby & Bailey, P.C.
CONSULTING ENGINEERS
PRATTVILLE, ALABAMA 334366-2707

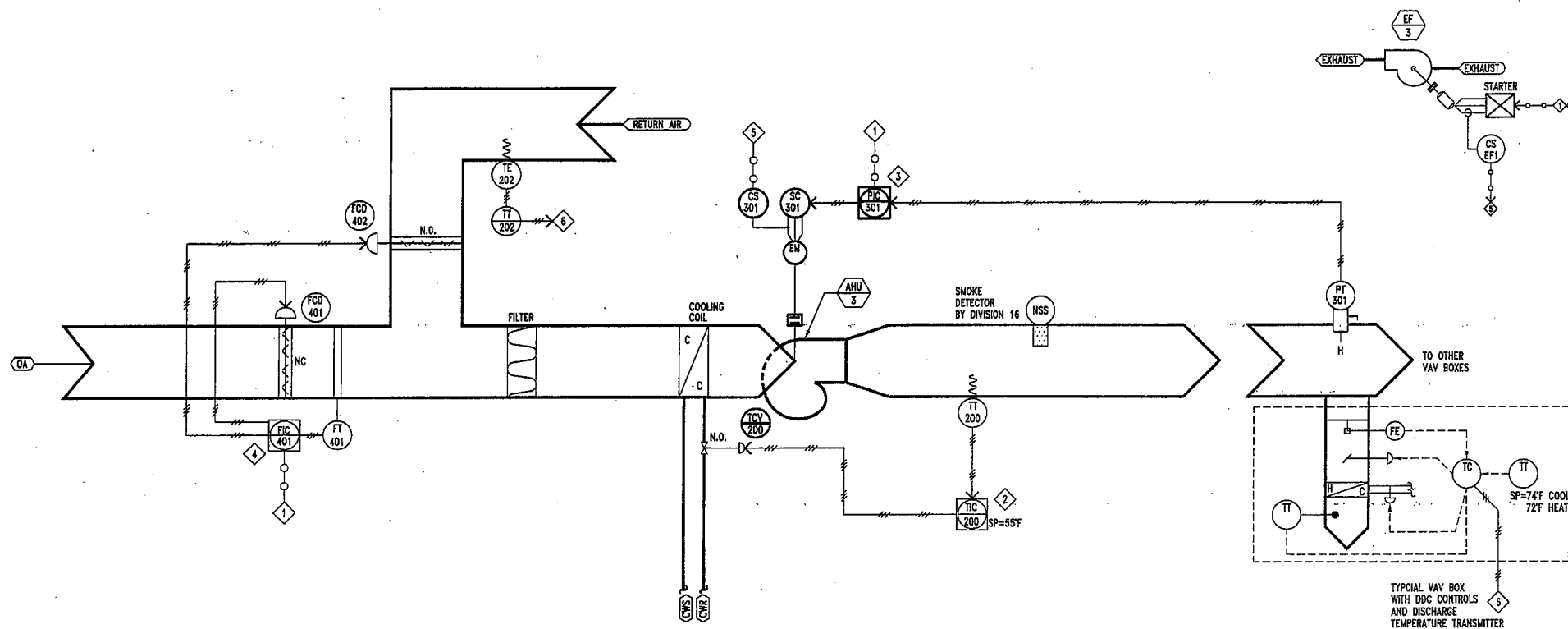
M7.03

AHU-3 INTERLOCK AND SEQUENCE NOTES

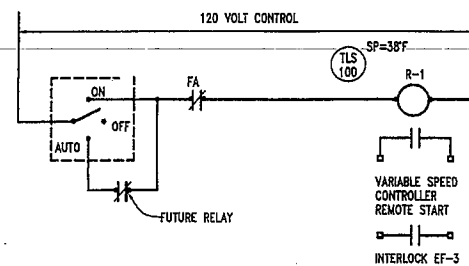
- 1 SUPPLY FAN TO BE ENABLED THROUGH BUILDING AUTOMATION SYSTEM (BAS), AND IS INTENDED TO BE ENABLED 24/7. BAS CONTRACTOR TO CONSULT WITH OWNER TO VERIFY OPERATIONAL SCHEDULE. START SEQUENCE SUBJECT TO FIRE ALARM RELAY AND SMOKE DETECTOR CONTACT. INTERLOCK EF-3 TO BE ENABLED.
- 2 DISCHARGE AIR TEMPERATURE AT COOLING COIL SHALL BE CONTROLLED THROUGH LOOP TIC-201 BASED ON DISCHARGE AIR TEMPERATURE INPUT FROM TT-201. DISCHARGE AIR TEMPERATURE CONTROL LOOP TO MODULATE TEMPERATURE CONTROL VALVE TCV-201 TO MAINTAIN SETPOINT INDICATED (ADJUSTABLE) WITH A DISCHARGE TEMPERATURE RESET (UP TO 50°F MAXIMUM) BASED ON COOLING REQUIREMENTS OF THE VAV TERMINALS SERVED FROM AHU-3.
- 3 DISCHARGE STATIC PRESSURE SHALL BE MAINTAINED BY LOOP PIC-301 BASED ON STATIC PRESSURE SET-POINT INPUT FROM PT-301. PROVIDE DUCT MOUNTED MAGNETIC GAUGE ADJACENT TO PT-301. OUTPUT FROM PIC-100 SHALL BE TO VARIABLE FREQUENCY DRIVE SC-301.
- 4 OUTSIDE AIR CONTROL LOOP FC-401 TO ACCEPT INPUT FROM OUTSIDE FLOW TRANSMITTER FT-401 AND MODULATE OUTSIDE AIR DAMPER FCD-401 FULLY OPEN AND RETURN AIR DAMPER FCD-402 PARTIALLY CLOSED TO MAINTAIN OUTSIDE AIR SET POINT. DURING UNOCCUPIED PERIOD, PROVIDE CONTROL AS DESCRIBED BEFORE. DURING UNOCCUPIED PERIOD, CLOSE OUTSIDE AIR DAMPER AND OPEN RETURN AIR DAMPER FULLY DISABLE EF-3.
- 5 PROVIDE DIGITAL INPUT TO DDC FOR STATUS. PROVIDE ALARM ON FAILURE OR OUT OF RANGE CONDITION.
- 6 PROVIDE ANALOG INPUT TO DDC FOR SYSTEM STATUS AND MONITORING. WHERE INDICATED, PROVIDE ALARM FOR OUT OF RANGE CONDITION.

MARK	EQUIPMENT SERVED	SERVICE	QPM	DIA IN.	Cv	TYPE	# PORTS	FAILED POSITION	CLOSE-OFF PSI
TCV-200	AHU-3	CHILLED WATER	40	1-1/4"	18	GLOBE	3	CLOSED TO COIL	55

CONTROL DAMPER SCHEDULE M7.04							
MARK	EQUIPMENT SERVED	SERVICE	SIZE	ACTUATOR	NORMAL POSITION	CONTROL	REMARKS
FCD-401	AHU-3	OUTSIDE AIR	1 1/2" DIA	ELECTRIC	CLOSED	AHU-3	
FCD-402	AHU-3	RETURN AIR	30/18	ELECTRIC	CLOSED	AHU-3	



1
M7.04



2
M7.04



BIRCHFIELD PENELOPE & ASSOCIATES
2855 Cheesnut Avenue, Suite 200
Birmingham, AL 35209
Phone: 205.875.8955
Fax: 205.875.3268
www.bpa.net



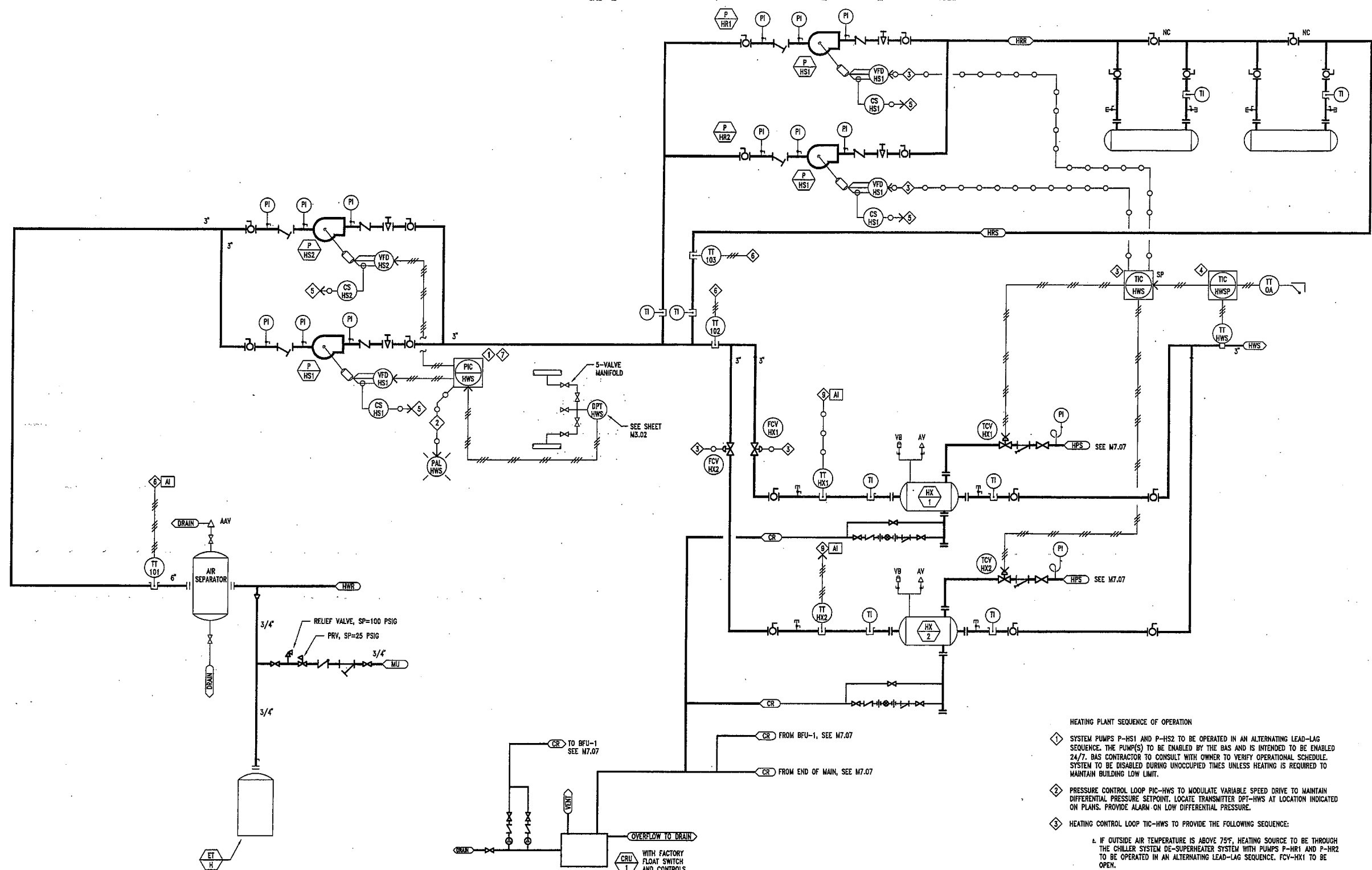
JACKSON SURGERY CENTER

Revision:	Date:

Date: 07.27.07
Drawing Title: AHU-3 CONTROL (M7.04)
Drawn by: WSH
Checked by: TSH
SFA Project No.: 55-06
CADD File No.:
Sheet 80 of 94
Drawing No.:

M7.04

Hattner, Hornsby & Bailey, P.C.
CONSULTING ENGINEERS
PRATTVILLE, ALABAMA 334/858-2707



CONTROL VALVE SCHEDULE M7.05

MARK	EQUIPMENT SERVED	SERVICE	LB/HR STEAM	OPW	DIA IN	CV	TYPE	# PORTS	FAKED POSITION	CLOSE-OFF PSI	REMARKS
TCV-HX1	HEAT EXCHANGER HX-1	STEAM (100 PSIG)	700	---	1-1/2"	---	CLOSE	2	CLOSED	120	
TCV-HX2	HEAT EXCHANGER HX-2	STEAM (100 PSIG)	700	---	1-1/2"	---	CLOSE	3	CLOSED	120	
FCV-HR1	HEAT EXCHANGER HX-1	HOT WATER	---	75	3"	---	BF	3	OPEN	35	2-POSITION
FCV-HX2	HEAT EXCHANGER HX-2	HOT WATER	---	75	3"	---	BF	2	CLOSED	35	2-POSITION

- HEATING PLANT SEQUENCE OF OPERATION
- SYSTEM PUMPS P-HS1 AND P-HS2 TO BE OPERATED IN AN ALTERNATING LEAD-LAG SEQUENCE. THE PUMP(S) TO BE ENABLED BY THE BAS AND IS INTENDED TO BE ENABLED 24/7. BAS CONTRACTOR TO CONSULT WITH OWNER TO VERIFY OPERATIONAL SCHEDULE. SYSTEM TO BE DISABLED DURING UNOCCUPIED TIMES UNLESS HEATING IS REQUIRED TO MAINTAIN BUILDING LOW LIMIT.
 - PRESSURE CONTROL LOOP PIC-HWS TO MODULATE VARIABLE SPEED DRIVE TO MAINTAIN DIFFERENTIAL PRESSURE SETPOINT. LOCATE TRANSMITTER DPT-HWS AT LOCATION INDICATED ON PLANS. PROVIDE ALARM ON LOW DIFFERENTIAL PRESSURE.
 - HEATING CONTROL LOOP TIC-HWS TO PROVIDE THE FOLLOWING SEQUENCE:
 - IF OUTSIDE AIR TEMPERATURE IS ABOVE 75°F, HEATING SOURCE TO BE THROUGH THE CHILLER SYSTEM DE-SUPERHEATER SYSTEM WITH PUMPS P-HR1 AND P-HR2 TO BE OPERATED IN AN ALTERNATING LEAD-LAG SEQUENCE. FCV-HX1 TO BE OPEN.
 - IF DURING OPERATION ABOVE 75°F THE HWS TEMPERATURE FALLS BELOW 100°F, OPERATION OF HX1 AND HX2 TO BE THROUGH A LEAD LAG SEQUENCE WITH STEAM VALVE MODULATED TO MAINTAIN SETPOINT FROM RESET LOOP TIC-HWS.
 - IF OUTSIDE TEMPERATURE FALLS BELOW 75°F, PUMPS P-HR1 AND P-HR2 SHALL BE DISABLED. OPERATION OF HX1 AND HX2 TO BE THROUGH A LEAD LAG SEQUENCE WITH STEAM VALVE MODULATED TO MAINTAIN SETPOINT FROM RESET LOOP TIC-HWS.
 - IF HOT WATER SUPPLY TEMPERATURE IS BELOW SETPOINT AND OUTPUT TO EITHER HX1 OR HX2 IS AT 100%, OPERATION OF LAG HX TO BE ENABLED AND WILL OPERATE IN PARALLEL WITH LEAD HEAT EXCHANGER.
 - SETPOINT CONTROLLER TIC-HWSP TO PROVIDE A RESET OF HOT WATER TEMPERATURE BASED ON OUTSIDE AIR TEMPERATURE WITH 180°F HWS AT 25°F OUTSIDE AIR, AND 100°F HWS AT 75°F OA TEMPERATURE. THIS SETPOINT TO BE USER ADJUSTABLE.
 - PROVIDE DIGITAL INPUT TO DDC FOR STATUS. PROVIDE ALARM ON FAILURE OR OUT OF RANGE CONDITION.
 - PROVIDE ANALOG INPUT TO DDC FOR SYSTEM STATUS AND MONITORING. WHERE INDICATED, PROVIDE ALARM FOR OUT OF RANGE CONDITION.

HEATING PLANT PROCESS AND INSTRUMENTATION DIAGRAM
NOT TO SCALE

Hattner, Hornsby & Bailey, P.C.
CONSULTING ENGINEERS
PRATTVILLE, ALABAMA 334/858-2707



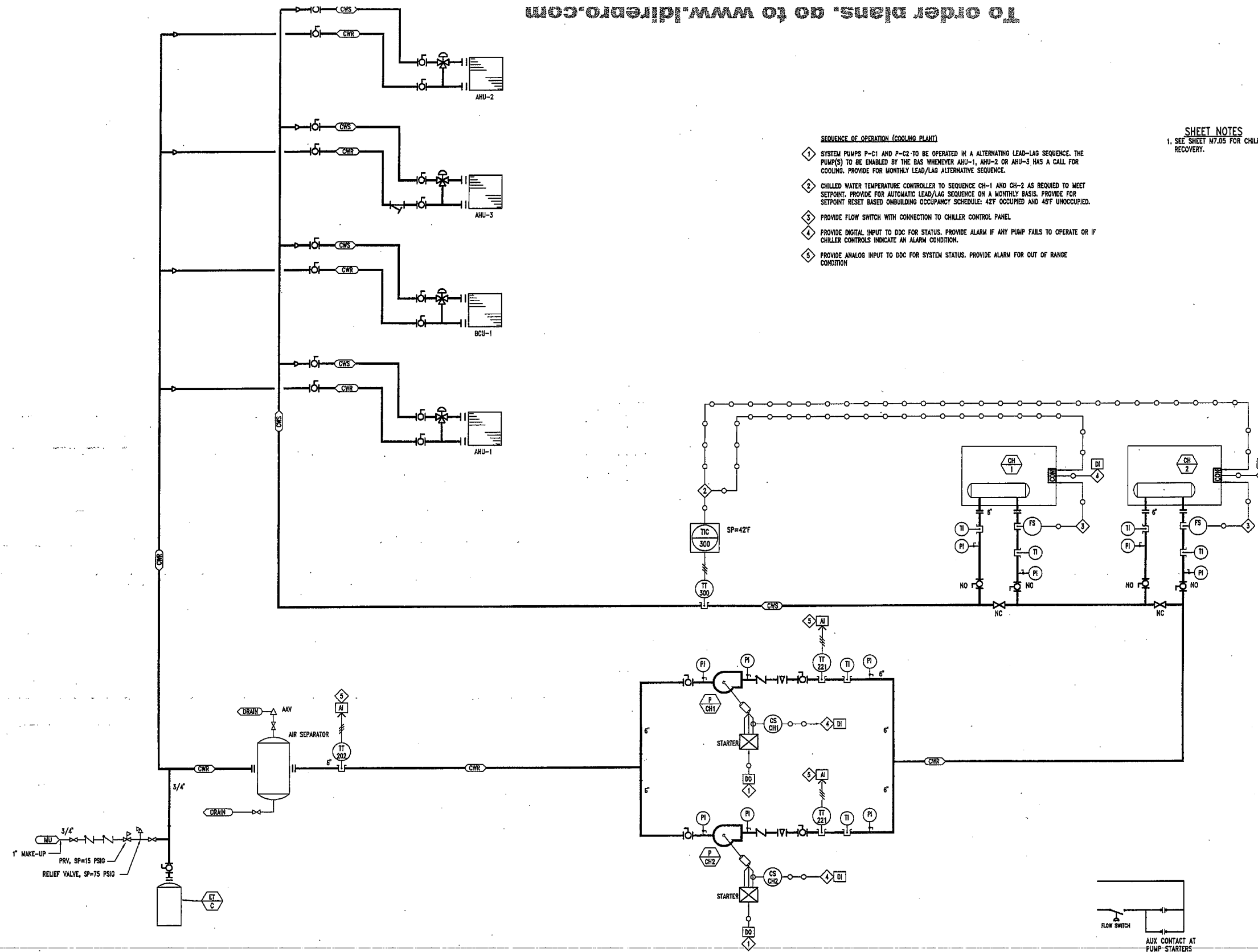
BIRCHFIELD PENUEL & ASSOCIATES
2805 Crescent Avenue, Suite 200
Birmingham, AL 35209
Phone: 205.876.1876
Fax: 205.876.2262
www.bpa.net



JACKSON SURGERY CENTER

Revision: _____ Date: _____

Date: 07.27.07
Drawing Title: CONTROL DIAGRAM
Drawn by: WJH Checked by: TLM
BPA Project No.: 55-06
CADD File No.:
Sheet 81 of 94
Drawing No.: M7.05



- SEQUENCE OF OPERATION (COOLING PLANT)**
- 1 SYSTEM PUMPS P-C1 AND P-C2 TO BE OPERATED IN AN ALTERNATING LEAD-LAG SEQUENCE. THE PUMP(S) TO BE ENABLED BY THE BAS WHENEVER AHU-1, AHU-2 OR AHU-3 HAS A CALL FOR COOLING. PROVIDE FOR MONTHLY LEAD/LAG ALTERNATIVE SEQUENCE.
 - 2 CHILLED WATER TEMPERATURE CONTROLLER TO SEQUENCE CH-1 AND CH-2 AS REQUIRED TO MEET SETPOINT. PROVIDE FOR AUTOMATIC LEAD/LAG SEQUENCE ON A MONTHLY BASIS. PROVIDE FOR SETPOINT RESET BASED ON BUILDING OCCUPANCY SCHEDULE: 42F OCCUPIED AND 45F UNOCCUPIED.
 - 3 PROVIDE FLOW SWITCH WITH CONNECTION TO CHILLER CONTROL PANEL.
 - 4 PROVIDE DIGITAL INPUT TO DDC FOR STATUS. PROVIDE ALARM IF ANY PUMP FAILS TO OPERATE OR IF CHILLER CONTROLS INDICATE AN ALARM CONDITION.
 - 5 PROVIDE ANALOG INPUT TO DDC FOR SYSTEM STATUS. PROVIDE ALARM FOR OUT OF RANGE CONDITION.

SHEET NOTES
 1. SEE SHEET M7.05 FOR CHILLER HEAT RECOVERY.

1 CHILLED WATER SYSTEM DIAGRAM
 M7.05 NOT TO SCALE

2 CHILLED START LADDER DIAGRAM
 M7.05 NOT TO SCALE



BIRCHFIELD PENUEL & ASSOCIATES
 2805 Crescent Avenue, Suite 200
 Birmingham, AL 35209
 Phone: 205.870.1878
 Fax: 205.870.1878
 www.bpa.com



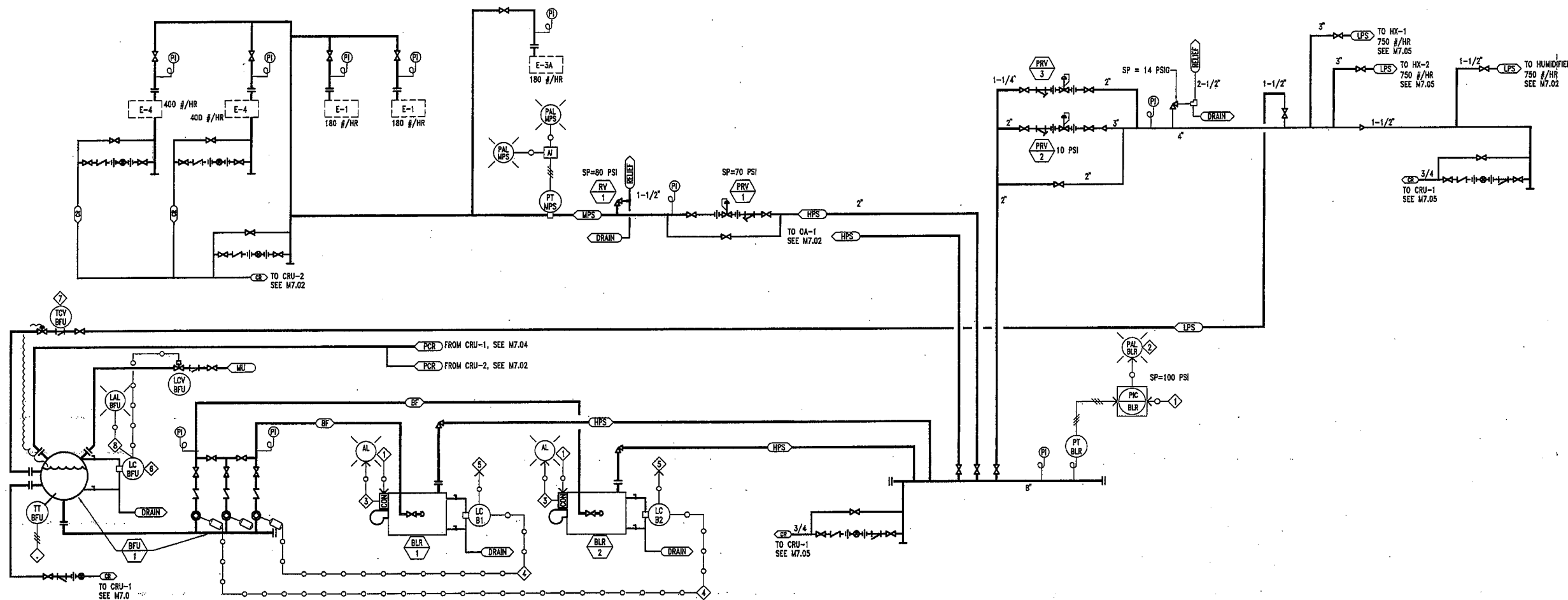
JACKSON SURGERY CENTER

Revision:	Date:

Date: 07.27.07
 Drawing Title: CHILLED WATER SYSTEM DIAGRAM
 Drawn by: T.J.H.
 Checked by: T.J.H.
 BPA Project No.: 55-06
 CADD File No.:
 Sheet 82 of 94
 Drawing No.:

M7.06

Hattner, Hornsby & Bailey, P.C.
 CONSULTING ENGINEERS
 PRATTVILLE, ALABAMA 35435-2707



1 M7.07 NOT TO SCALE STEAM AND CONDENSATE SYSTEM PROCESS DIAGRAM

CONTROL VALVE SCHEDULE M7.07

MARK	EQUIPMENT SERVED	SERVICE	LB/HR STEAM	GPM	DIA IN.	Cv	TYPE	# PORTS	FALED POSITION	CLOSE-OFF PSI	REMARKS
PRV-1	NA	STEAM PRESSURE REDUCING, 100 TO 70 PSI	1380	---	1"	---	PRV	2	CLOSED	100	
PRV-2	NA	STEAM PRESSURE REDUCING, 100 TO 10 PSI	400	---	1/2"	---	PRV	2	CLOSED	100	
PRV-3	NA	STEAM PRESSURE REDUCING, 100 TO 10 PSI	1000	---	3/4"	---	PRV	2	CLOSED	100	FULL CAPACITY OF PRV-1
RV-1	NA	STEAM PRESSURE RELIEF VALVE	---	---	1-1/4" x 1-1/2"	---	RV	2	NA	NA	FULL CAPACITY OF PRV-2 AND 3 COMBINED
RV-2	NA	STEAM PRESSURE RELIEF VALVE	---	---	2" x 2-1/2"	---	RV	2	NA	NA	
TCV-BFU	BOILER FEED WATER UNIT	FEEDWATER PREHEAT	135	---	1/2"	4	GLOBE	2	CLOSED	15	
LCV-BFU	BOILER FEED WATER UNIT	MAKE-UP WATER	---	4	1/2"	2.5	SOLENOID	2	CLOSED	15	

- INTERLOCK AND SCHEDULE NOTES**
- STEAM PRESSURE CONTROLLER TO ENABLE BOILER #1 AND BOILER #2 ON A LEAD/LAG BASIS. CONTROLLER TO ENABLE ONE OR BOTH BOILERS TO MAINTAIN 100 PSIG AT STEAM HEADER (PT-BLR).
 - PROVIDE ALARM IF BOILER PRESSURE FALLS BELOW 80 PSIG.
 - PROVIDE ALARM INTO BAS FOR BOILER SHUT-DOWN OR ALARM CONDITION.
 - BOILER FEED UNIT PUMPS TO BE CYCLED ON-OFF BY BOILER MOUNTED LEVEL CONTROLLER.
 - BOILER LEVEL CONTROLLER TO DISABLE BOILER ON LOW WATER CONDITION. PROVIDE ALARM FROM BOILER CONTROL PANEL.
 - BOILER FEED TANK LEVEL CONTROLLER TO ENABLE MAKE-UP WATER VALVE LCV-BFU AS REQUIRED FOR TANK LEVEL.
 - SELF CONTAINED CONTROL VALVE TCV-BF TO MODULATE STEAM FLOW TO FEEDWATER HEATER TO MAINTAIN SETPOINT OF 180°F.
 - PROVIDE ALARM ON LOW WATER LEVEL AT BOILER FEED TANK.



BIRCHFIELD PENNELL & ASSOCIATES
 2805 Chestnut Avenue, Suite 200
 Birmingham, AL 35209
 Phone: 205.876.1076
 Fax: 205.876.3029
 www.bpa.net

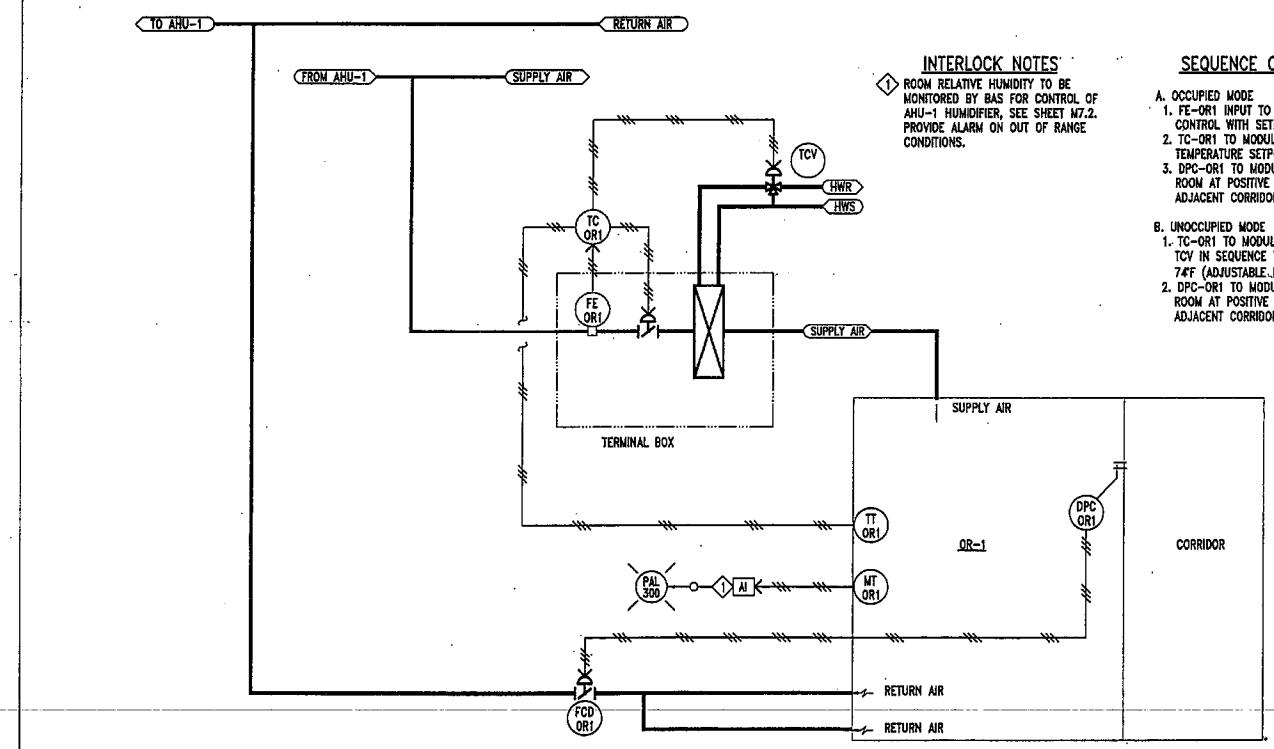


JACKSON SURGERY CENTER

Revision	Date

Date: 07.27.07
 Drawing Title: CONTROL VALVE SCHEDULE
 Drawn by: CONTROL VALVE SCHEDULE
 Checked by: TSM
 BPA Project No.: 55-06
 Sheet of: 85 of 94
 Drawing No.: M7.07

Hatterer, Hornsby & Bailey, P.C.
 CONSULTING ENGINEERS
 PRATTVILLE, ALABAMA 394358-2707



INTERLOCK NOTES
 ◆ ROOM RELATIVE HUMIDITY TO BE MONITORED BY BAS FOR CONTROL OF AHU-1 HUMIDIFIER, SEE SHEET M7.2. PROVIDE ALARM ON OUT OF RANGE CONDITIONS.

SEQUENCE OF OPERATION

A. OCCUPIED MODE

1. FE-OR1 INPUT TO TC-OR1 FOR CONSTANT VOLUME CONTROL WITH SETPOINT AS SCHEDULED.
2. TC-OR1 TO MODULATE TCV TO MAINTAIN ROOM TEMPERATURE SETPOINT.
3. DPC-OR1 TO MODULATE FCD-OR1 TO MAINTAIN ROOM AT POSITIVE PRESSURE RELATIVE TO ADJACENT CORRIDOR.

B. UNOCCUPIED MODE

1. TC-OR1 TO MODULATE TERMINAL BOX DAMPER AND TCV IN SEQUENCE TO MAINTAIN ROOM SETPOINT OF 74°F (ADJUSTABLE FROM BAS).
2. DPC-OR1 TO MODULATE FCD-OR1 TO MAINTAIN ROOM AT POSITIVE PRESSURE RELATIVE TO ADJACENT CORRIDOR.

1
 M7.05
TYPICAL SURGERY CONTROL DIAGRAM
 NOT TO SCALE



BIRDFIELD
 PENUEL &
 ASSOCIATES



**BIRDFIELD
 PENUEL &
 ASSOCIATES**
 2805 Crescent Avenue, Suite 200
 Birmingham, AL 35202
 Phone: 205.870.1078
 Fax: 205.870.1079
 www.bpa.com



**JACKSON
 SURGERY
 CENTER**

Revision:	Date:

Date: 07.27.07
 Drawing Title: AHU CONTROL DIAGRAM
 Drawn by: JBC
 Checked by: J.H.
 BPA Project No.: 55-06
 CAD File No.:
 Sheet: 84 of 94
 Drawing No.:

M7.08

Hattner, Hornsby & Bailey, P.C.
 CONSULTING ENGINEERS
 PRATTVILLE, ALABAMA 35435-2707