

ANCHOR ROD EMBEDMENT LENGTHS

BOLT DIA	MIN EMBEDMENT
3/4"	9"
1"	12"
1 1/4"	15"
1 1/2"	18"

NOTE: ANCHOR ROD SIZE AND MATERIAL TO BE PROVIDED BY METAL BUILDING MANUFACTURER. THE ABOVE TABLE IS MINIMUM EMBEDMENT TO FULLY DEVELOP ASTM F1554 GRADE 36 HEADED ANCHOR RODS. FINAL ANCHOR ROD EMBEDMENT DEPTH SHALL BE DETERMINED BY STRUCTURAL ENGINEER AFTER SUBMITTAL OF COLUMN BASE AND ANCHOR ROD INFORMATION FROM METAL BUILDING MANUFACTURER PRIOR TO MATERIAL ORDER AND FABRICATION.

MASONRY LINTEL SCHEDULE

MAXIMUM OPENING WIDTH	STEEL FOR EACH 4" OF WALL THICKNESS	LINTEL DIMENSIONS AND REINFORCING		
		DEPTH	8" WALL	12" WALL
2'-0"	L3 1/2x3 1/2x3/8	8	1#4 BOT	1#4 BOT
4'-0"	L3 1/2x3 1/2x3/8	8	1#4 BOT	2#4 BOT
6'-0"	L3 1/2x3 1/2x3/8	8	1#5 BOT & 1#4 TOP	2#5 BOT & 2#4 TOP
8'-0"	L5x3 1/2x3/8	16	1#6 BOT & 1#5 TOP	2#5 BOT & 2#4 TOP
10'-0"		16	1#7 BOT & 1#5 TOP	2#6 BOT & 2#4 TOP
12'-0"		16	1#8 BOT & 1#5 TOP	2#7 BOT & 2#5 TOP

- DO NOT USE THIS SCHEDULE IF CONCENTRATED LOAD IS APPLIED TO THE LINTEL AT A HEIGHT LESS THAN HALF THE SPAN ABOVE THE LINTEL, OR IF STACK BOND IS SPECIFIED.
- PROVIDE 8" MINIMUM BEARING FOR ALL LINTELS. FOR LINTELS GREATER THAN 6'-0" FILL CELLS SOLID AT EACH SIDE OF OPENING.
- ALL EXPOSED LINTEL ANGLES TO BE HOT DIP GALVANIZED.
- SHORE LINTEL UNTIL MORTAR AND GROUT HAVE SET AND CURED.

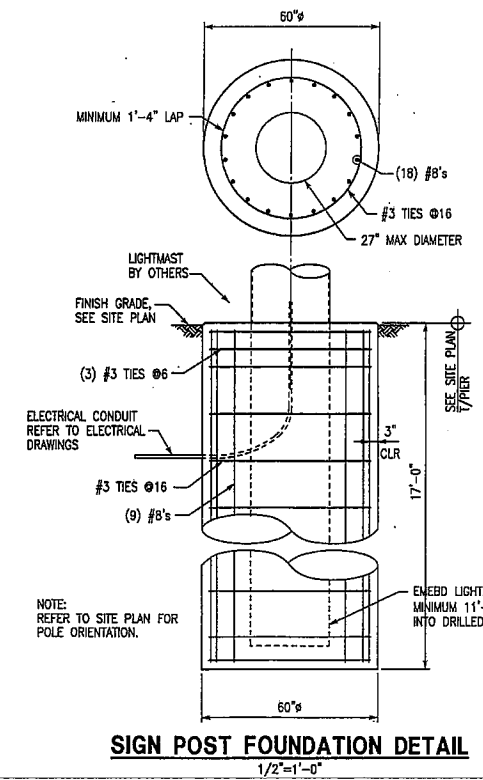
METAL BUILDING COLUMN REACTIONS (KIPS)

COLUMN DESIGNATION	DEAD+LIVE		DEAD+WIND		BRACING	
	H	V	H	V	H	V
A1,A3	3	12	2	-3	-	-
B1,B3	3	12	2	-3	-	-
B2	1	4	1	-1	-	-

FOOTING SCHEDULE

FOOTING DESIGNATION	F4.0	F5.0
SIZE (LxW)	4'-0"x4'-0"	5'-0"x5'-0"
DEPTH (D)	2'-0"	2'-0"
REINFORCING (BOT)	4#5	5#5
NOTES		

- NOTES:
1. PROVIDE SCHEDULED REINFORCEMENT ON TOP AND BOTTOM OF FOOTING.



- FOUNDATION PLAN**
1/8"=1'-0"
- FINISH FLOOR (TOP OF SLAB) DATUM, MATCH EXISTING.
 - TOP OF FOOTING ELEVATION AT FINISH FLOOR, UNLESS NOTED.
 - FOR GENERAL NOTES SEE SHEET S1.1.
 - FOR SLAB ON GRADE CONSTRUCTION, SEE GENERAL NOTES AND TYPICAL DETAILS.
 - FOR SLAB RECESS SIZE AND LOCATION, SEE ARCHITECTURAL DRAWINGS.
 - GENERAL CONTRACTOR SHALL COORDINATE TILE JOINT LOCATIONS WITH CONTROL JOINTS.
 - GENERAL CONTRACTOR TO COORDINATE ALL DRAWINGS WITH THE METAL BUILDING SUPPLIER BEFORE FOUNDATION INSTALLATION BEGINS.
 - GENERAL CONTRACTOR SHALL OBTAIN AND LAYOUT COLUMN ANCHOR RODS FROM ANCHOR ROD SETTING PLAN PROVIDED BY THE METAL BUILDING MANUFACTURER.
 - FOR PRE-FABRICATED METAL BUILDING, SEE GENERAL NOTES ON S1.1.
 - PORTAL FRAMES SHALL BE USED FOR LATERAL BRACING. COORDINATE LAYOUT WITH ARCHITECTURAL DRAWINGS. CONTRACTOR TO VERIFY PORTAL FRAMES DO NOT CONFLICT WITH WINDOWS, DOORS, ETC.



HOOVER HIGH SCHOOL
SOFTBALL COMPLEX
RENOVATION
CITY, STATE

In Charge - JSL
Designed - HCW
Drawn By - ALS
Checked - HCW
Approved - HCW Date 8-17-07
Sheet Title
FOUNDATION
PLANS

Job Number 03068-B0.00
Sheet Number S2.1