

LEGEND

PROPOSED NUMBER OF PEOPLE TO EXIT
 15/180
 MAX. NUMBER OF PEOPLE TO EXIT
 DOOR WIDTH (1 1/2"/OCCUPANT)
 STAIR WIDTH (2 1/3"/OCCUPANT)

107 LF TRAVEL DIST. TO EXIT (MAX. 250')
 1 HR RATED
 2 HR RATED

FIRE RATING ANALYSIS

EXTERIOR WALLS FIRE SEPARATION ANALYSIS
 ALL WALLS MORE THAN 30' FROM PROP. LINE
 WALLS _____ 0 HR.
 ALLOWABLE PERCENTAGE EXTERIOR OPENINGS _____ NO LIMITATION

INTERIOR WALLS FIRE SEPARATION ANALYSIS
 SHAFTS / STAIRWELLS / ELEV. EQUIP. ROOM _____ 1 HR. # 2 STORY, 2 HR. MORE 2 STORY
 CORRIDOR _____ 30 MIN.
 UNITS SEPARATION _____ 1 HR. T08.1
 FLOOR/CEILING _____ 1 HR. T11.3

FIRE PROTECTION ANALYSIS
 EXTERIOR BEARING WALLS _____ 2 HR FIRE RATING
 EXTERIOR NOT BEARING WALLS _____ 0 HR.
 COLUMNS, WALLS, BEAMS SUPPORTING MORE THAN 1 FLOOR _____ 0 HR. TABLE 601
 COLUMNS, WALLS, BEAMS SUPPORTING ONLY 1 FLOOR _____ 0 HR. TABLE 601
 FLOOR/CEILING _____ 1 HR. TABLE 601
 ROOF/CEILING _____ 0 HR. TABLE 601

OCCUPANCY CALCULATION FOR EMERGENCY EXIT

PUBLIC AREA FIRST FLOOR

FIRST FLOOR
 LOUNGE/RESTAURANT 1588 SF / 15 SF/OCCUPANT _____ 106 OCCUPANTS
 EXERCISE 314 SF / 50 SF/OCCUPANT _____ 8 OCCUPANTS

OFFICES/BUSINESS 999 SF / 100 SF/OCCUPANT _____ 9 OCCUPANTS
 MEETING ROOMS 1441 SF / 7 SF/OCCUPANT _____ 205 OCCUPANTS
 KITCHEN/LAUNDRY 1126 SF / 200 SF/OCCUPANT _____ 13 OCCUPANTS

TOTAL _____ 341 OCCUPANTS

SECOND FLOOR

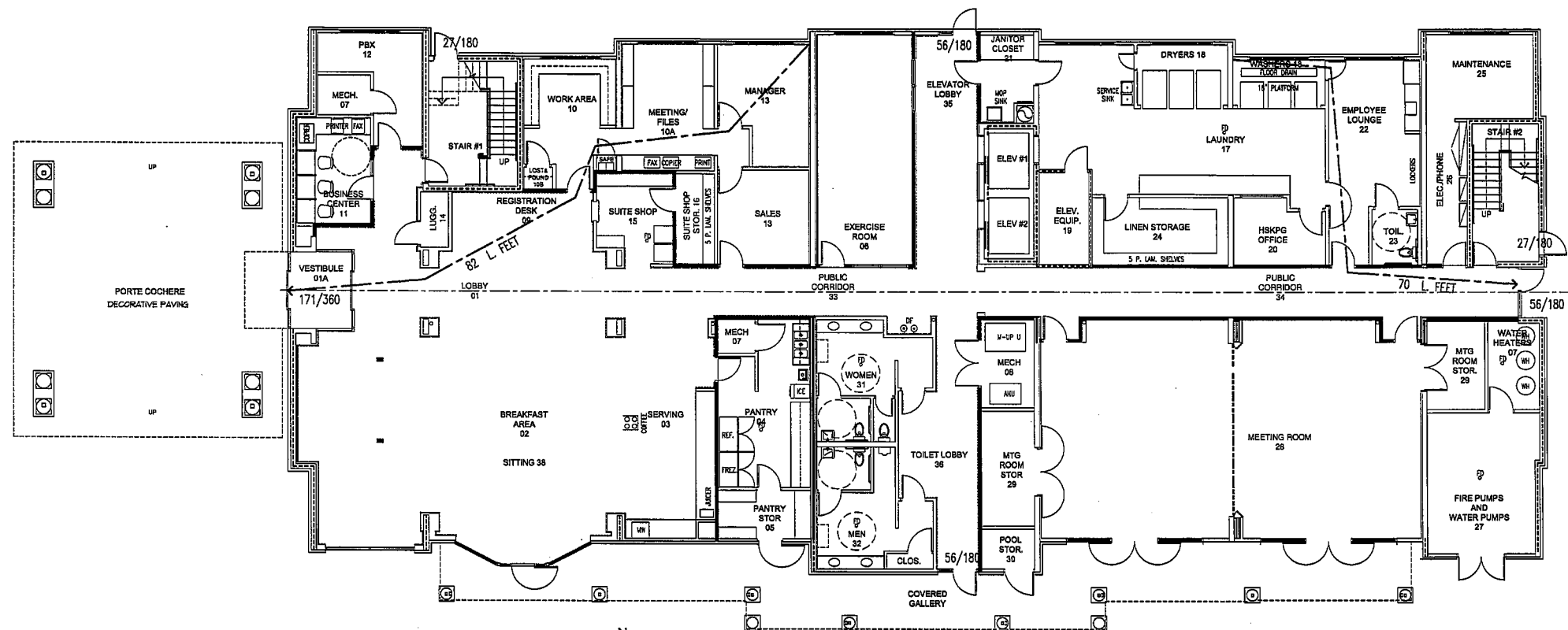
9,450 SF / 200 SF/OCCUPANT _____ 48 OCCUPANTS

TYPICAL FLOOR

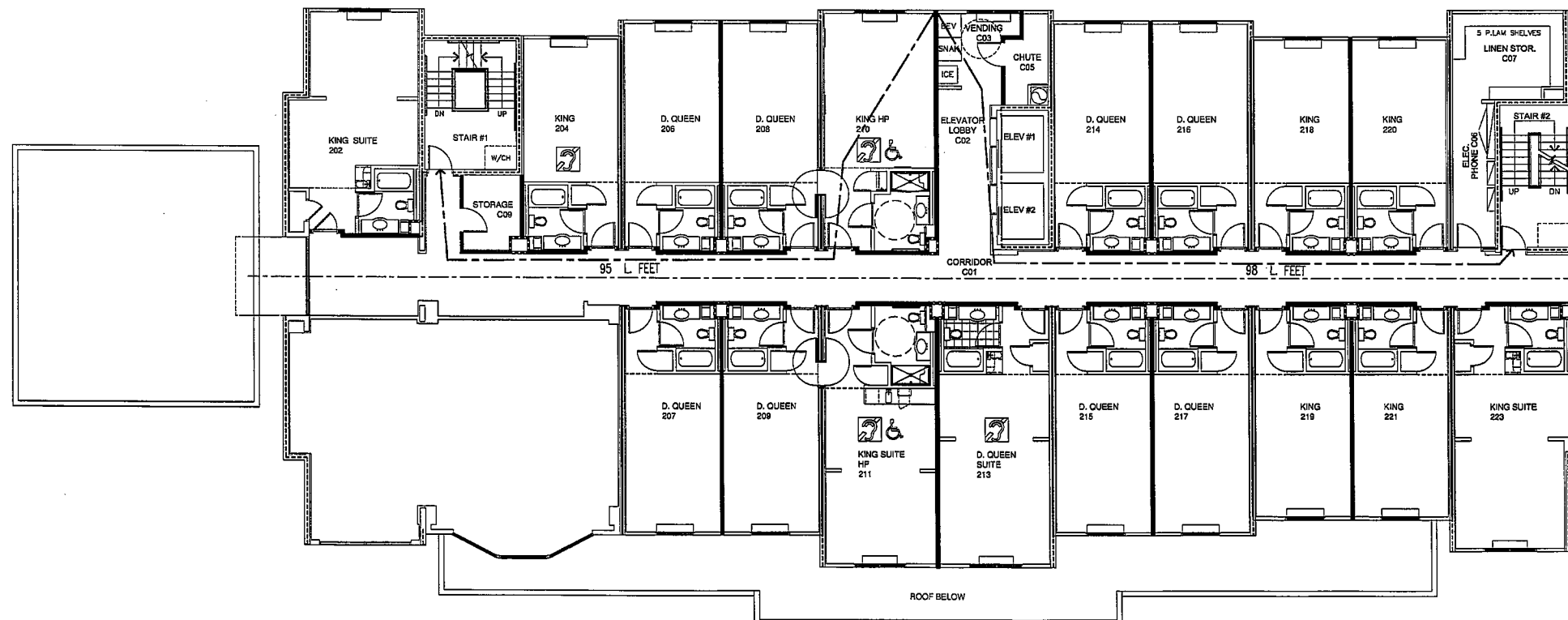
10,709 SF / 200 SF/OCCUPANT _____ 53 OCCUPANTS

DOOR EXIT LOAD CALC.

FIRST FLOOR FRONT DOOR 341/2 = 171 OCCUPANTS
 FIRST FLOOR SECONDARY EXITS 341/2/3 = 56 OCCUPANTS
 FIRST FLOOR EXT. STAIR DOORS 53/2 = 27 OCCUPANTS



1 FIRST FLOOR LIFE SAFETY PLAN
 SCALE: 3/32"=1'-0"



2 SECOND AND TYPICAL FLOOR LIFE SAFETY PLAN
 SCALE: 3/32"=1'-0"

▲ C000606

HARTER - ADAMS P.A.
 ARCHITECTS AND PLANNERS
 1370 GARDEN STREET, WINTER PARK, FLORIDA 32789
 PHONE: 407-847-8767 FAX: 407-847-2002

Holiday Inn

NEW HOTEL BUILDING
 HOLIDAY INN EXPRESS - JACKSONVILLE, FLORIDA
 LOT 3, CHAFFEE POINT S/D INTERSECTION W/ CRYSTAL SPRINGS RD.

REVISION

JOB NO.

DATE

SHEET

LS01