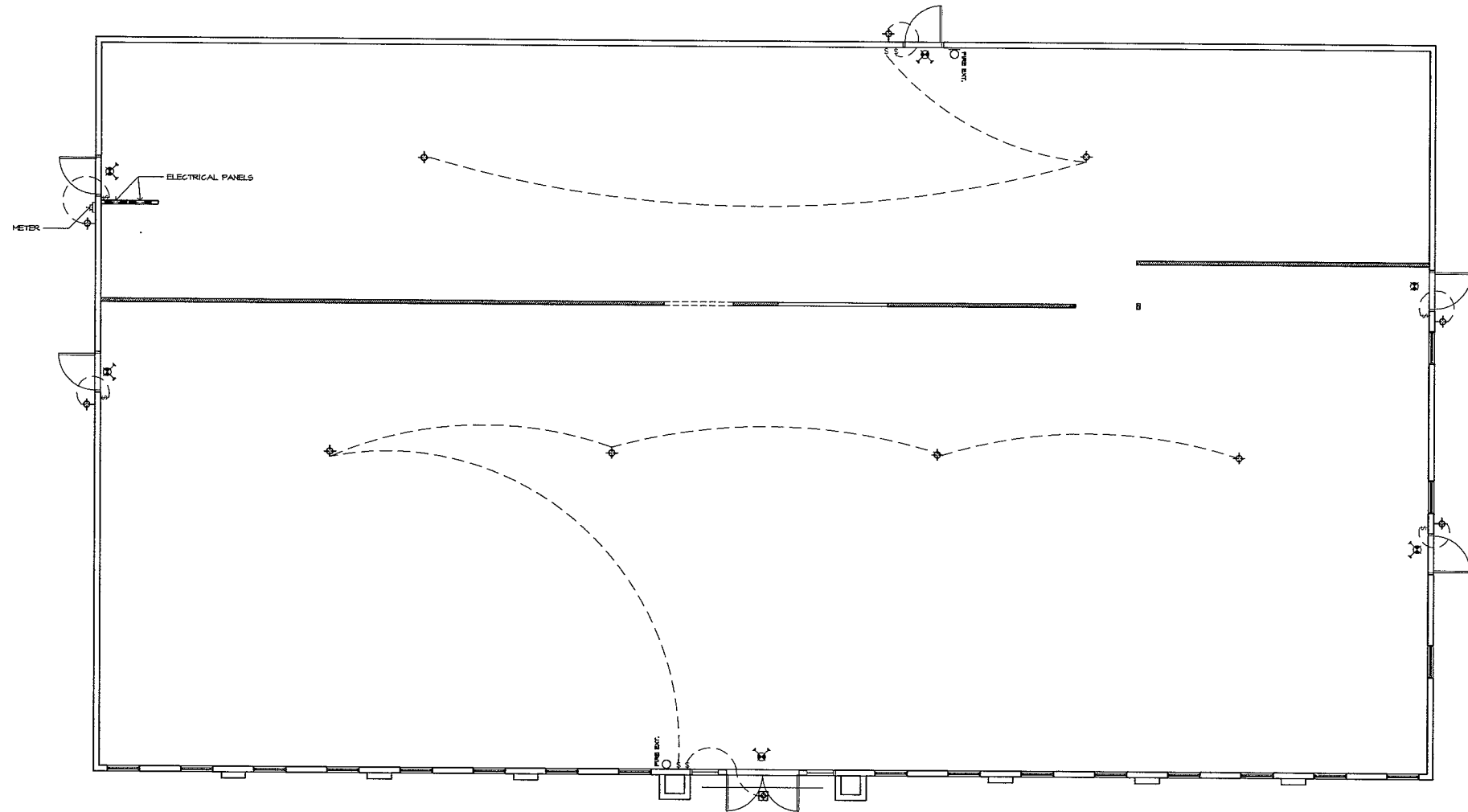
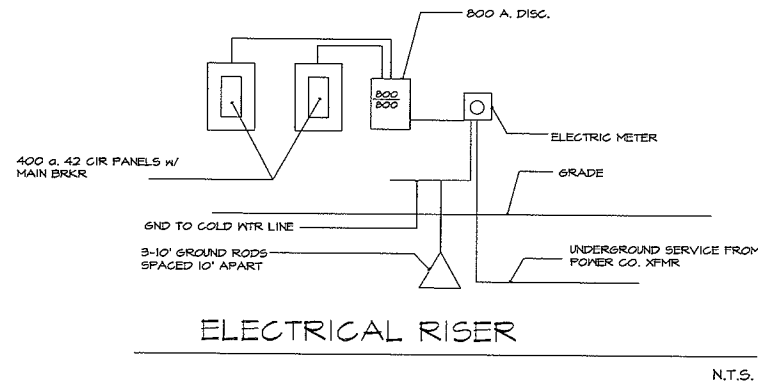


**ELECTRICAL LEGEND**

⊕	DUPLEX RECEPTACLE 120v 15a
⊕ <sub>G</sub>	G.F.I. DUPLEX RECEPTACLE 120v 15a
⊕ <sub>S</sub>	DUPLEX OUTLET 120v 15a SPLIT WIRED
⊕ <sub>OC</sub>	DUPLEX OUTLET OVER COUNTER AT +12"
⊕ <sub>SP</sub>	SPECIAL PURPOSE OUTLET MATCH EQUIP PLUG
⊕ <sub>F</sub>	FLOOR OUTLET WITH FLOORING TRIM RING
⊕ <sub>SP</sub>	SINGLE POLE SWITCH @ +48"
⊕ <sub>3</sub>	SWITCH 3 WAY
⊕ <sub>D</sub>	SWITCH WITH DIMMER
⊕ <sub>SM</sub>	SURFACE MOUNTED CEILING LIGHT
⊕ <sub>WM</sub>	WALL MOUNTED LIGHT
⊕ <sub>RC</sub>	RECESSED CEILING LIGHT
⊕ <sub>LIF</sub>	LAY-IN FLUOR. 2'x4' x 4 LAMP
⊕ <sub>LIFB</sub>	LAY-IN FLUOR. 2'x4' 4 LAMP w/2 LAMP BATTERY CIRCUIT
⊕ <sub>FS</sub>	FLUOR. STRIP FIXTURE SIZE AS SHOWN
⊕ <sub>SMF</sub>	SURFACE MTD. FLUOR. FIXTURE x 2 LAMP
⊕ <sub>TO</sub>	TELEPHONE OUTLET
⊕ <sub>FS</sub>	FUSED SWITCH
⊕ <sub>TV</sub>	OUTLET FOR TELEVISION HOOKUP
⊕ <sub>CN</sub>	COMPUTER NETWORK OUTLET
⊕ <sub>FF</sub>	PADDLE FAN AND LIGHT
⊕ <sub>EB</sub>	EMERGENCY BATTERY BACKUP LIGHT
⊕ <sub>EBE</sub>	BATTERY BACK-UP EXIT LIGHT
⊕ <sub>CE</sub>	CEILING MOUNTED EXHAUST FAN
⊕ <sub>EBEL</sub>	BATTERY BACK-UP EXIT LIGHT w/EMERG. EXIT LIGHTS (MIN 1 FOOT CANDLE/SIF)
⊕ <sub>ES</sub>	LIGHTED EXIT DIRECTION SIGN
⊕ <sub>WT</sub>	WALL MOUNTED THERMOSTAT



**ELECTRICAL PLAN**  
1/4" = 1'-0"



**richard landau**

ARCHITECTS & PLANNERS  
1-800-576-1783

2227 Gainesville Highway  
Blairsville, Georgia 30512  
(706) 745-5824 mountaintoparchitect@msn.com fax (775) 890-8644

this drawing is the property of the architect and is not to be reproduced, changed or altered in any way without written permission of the architect

project name  
**HAPPY GARDEN RESTAURANT, HELL ONLY at SUNRISE PLAZA**  
project  
**HWY 64 CHEROKEE COUNTY, NORTH CAROLINA**

07-38

sheet title  
**ELECTRICAL AND LIFE SAFETY PLAN**  
drawn J.P.H. checked R.L. approved

**PRELIMINARY DRAWINGS  
DO NOT USE FOR CONSTRUCTION**

sheet  
**E-1.1**  
7 of 7  
date 04/05/07  
revision 04/06/07

To Order Plans Go To WWW.LDIREPRO.COM