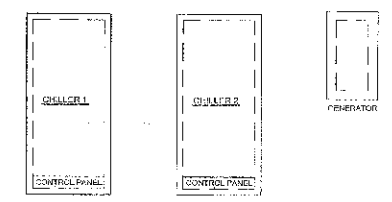
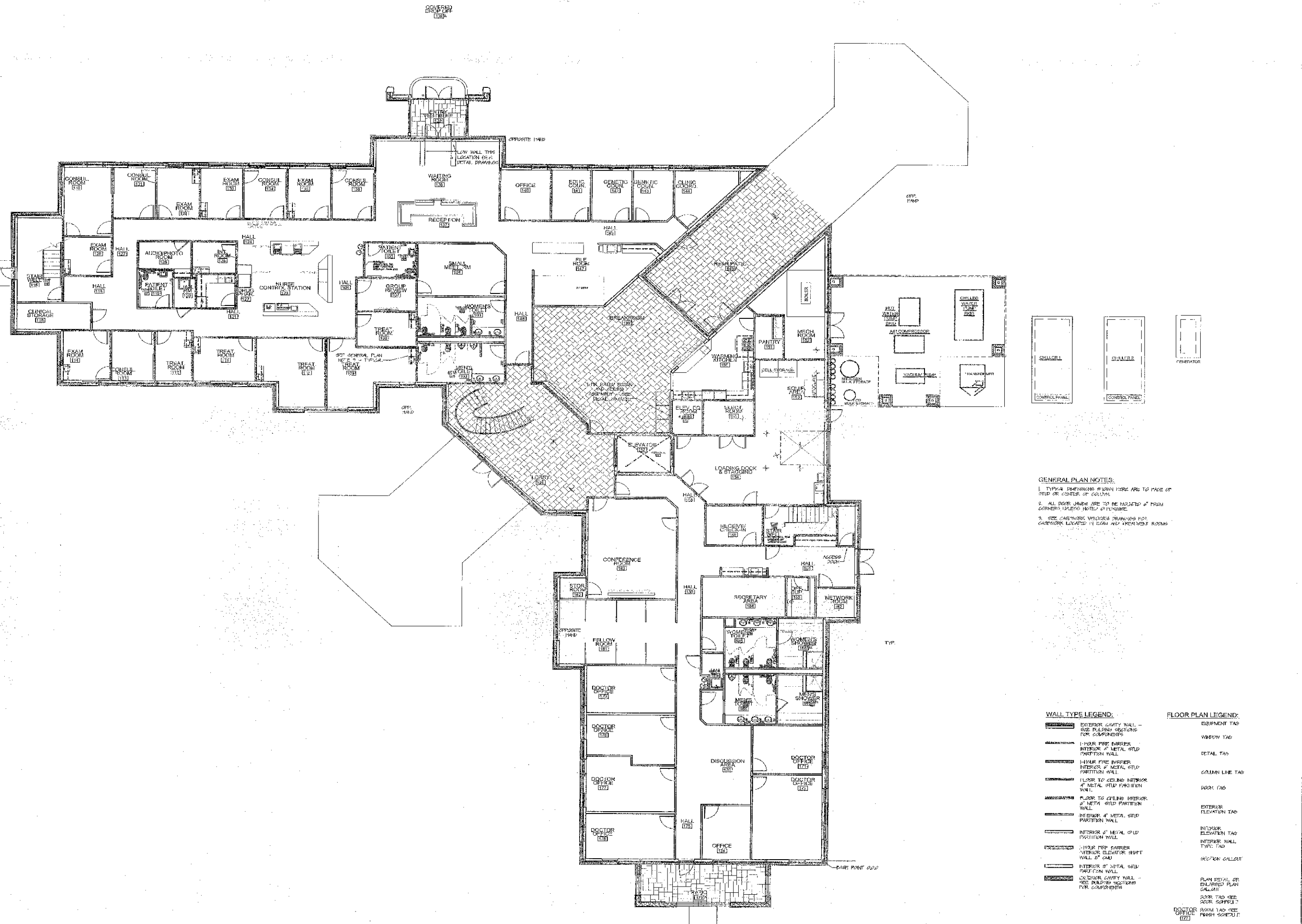




McMillan Smith & Partners  
Architects, PLLC

Post Office Box 5331  
Spartanburg, SC 29304  
864.595.5578 Fax 864.542.9451



**GENERAL PLAN NOTES:**  
 1. TYPICAL DIMENSIONS SHOWN HERE ARE TO FACE OF STUD OR CENTER OF COLUMN.  
 2. ALL DATE JANES ARE TO BE MOUNTED 4" FROM CORNERS UNLESS NOTED OTHERWISE.  
 3. SEE CASWORK UNLESS DRAWINGS FOR CASWORK LOCATED IN EXAM AND TREATMENT ROOMS.

**WALL TYPE LEGEND:**  
 EXTERIOR CAVITY WALL - SEE BUILDING SECTIONS FOR COMPONENTS  
 1-HOUR FIRE BARRIER INTERIOR OF METAL STUD PARTITION WALL  
 1-HOUR FIRE BARRIER INTERIOR OF METAL STUD PARTITION WALL  
 FLOOR TO CEILING INTERIOR OF METAL STUD PARTITION WALL  
 FLOOR TO CEILING INTERIOR OF METAL STUD PARTITION WALL  
 INTERIOR OF METAL STUD PARTITION WALL  
 INTERIOR OF METAL STUD PARTITION WALL  
 1-HOUR FIRE BARRIER INTERIOR OF METAL STUD PARTITION WALL  
 INTERIOR OF METAL STUD PARTITION WALL  
 EXTERIOR CAVITY WALL - SEE BUILDING SECTIONS FOR COMPONENTS

**FLOOR PLAN LEGEND:**  
 EQUIPMENT TAG  
 WINDOW TAG  
 DETAIL TAG  
 COLUMN LINE TAG  
 DOOR TAG  
 EXTERIOR ELEVATION TAG  
 INTERIOR ELEVATION TAG  
 INTERIOR WALL TYPE TAG  
 SECTION CALLOUT  
 PLAN SYMBOL OR ENLARGED PLAN CALLOUT  
 DOOR TAG SEE DOOR SCHEDULE  
 ROOM TAG SEE FINISH SCHEDULE

**GREENWOOD GENETIC CENTER**  
**TREATMENT FACILITY**  
 Greenwood, SC

PROJECT NAME: GREENWOOD GENETIC CENTER TREATMENT FACILITY

REVISIONS:

BID DOCUMENTS	09/14/07
PRINCIPAL IN CHARGE:	RB
PROJECT ARCHITECT:	MS
DRAWN BY:	MS/AM/ACC

SHEET TITLE:  
**FLOOR FINISHES FOR FIRST FLOOR**

SHEET NO.	PROJ. NO.
<b>ID3.1</b>	05061
SIT 2 OF 2	DATE:
	09/14/07