

Code Search

Project Name: Greenwood Genetic Center Treatment Facility
 Project Number: 05061
 Date: 06/17/07
 Schematic Performed By: Kevin Davis, AIA
 Address: 101 Orger Middle Circle
 City of: Greenwood
 County of: Greenwood (South Carolina)

Governing Codes:
 International Building Code 2003 with SC amendments
 International Mechanical Code 2003 with SC amendments
 International Fuel Gas Code 2003 with SC amendments
 International Fire Code 2003 with SC amendments
 National Electrical Code 2002 with SC amendments
 R-7 Eminent Fire-Retardant Floor (EIFR) Law (South Carolina) including ANSI A117.1-1999
 Americans with Disabilities Act (ADA)

City / County of Jurisdiction: City of Greenwood

n) Building Occupancy Classification (Chapter 3)

per building is a Licensee/Operator with Assembly Assembly, and Individual Storage and Vectorial access.

Floor	Occupancy Classification	Description of Use	Area	Notes
First Floor	Assembly (A-3)	Waiting / Office areas	12,242	
Business (B)	Waiting / Office areas	917		
Storage (S-1)	Mechanical Storage areas	1,227		
First Floor Totals			14,386	
Second Floor	Assembly (A-3)	Waiting / Office areas	14,123	
Storage (S-1)	Mechanical Storage areas	172		
Second Floor Totals			14,295	
Building Totals (sf)			28,681	

m) Type of Construction (Chapter 5)

Construction Type: III

(This building will be as specified.)

o) Allowable Heights and Building Areas (F. 503)

Max. Allowable Height	Actual Height
55	48.2
Maximum No. of Stories	Actual No. of Stories
4	2
Maximum Allowable Area (per floor) (sf)	Actual Area (per floor) (max) (sf)
33,000	14,511

d) Fire Protection Requirements (701 and other sections by reference)

Building Component	Fire-Retardant (Req.)	System 2 (2003 UL Catalog)	Opening Protection (Req.)	Opening Protection System (2003 UL Catalog)
Structural Frame	0			
Exterior Wall	0			
Interior Wall	0			
Roof Deck	0			
Roof Structure	0			
Other	0			

e) Glass Panel Maximum Area (per ft.) (F. 704.4.3)

Area	1/8" min. thick	3/8" min. thick	1/2" min. thick	5/8" min. thick	3/4" min. thick
1/8" min. thick	1.5	1.5	1.5	1.5	1.5
3/8" min. thick	1.5	1.5	1.5	1.5	1.5
1/2" min. thick	1.5	1.5	1.5	1.5	1.5
5/8" min. thick	1.5	1.5	1.5	1.5	1.5
3/4" min. thick	1.5	1.5	1.5	1.5	1.5

a) Soil Requirements (1004, 1005, 1013, 1014, 1015)

Floor	Area	Occ.	Load	Min. Actual	Max. Actual	Min. Allow.	Max. Allow.
First Floor	14,386	Assembly (A-3)	150	2158	2158	150	2158
Second Floor	14,295	Assembly (A-3)	150	2144	2144	150	2144

b) Special Existing Requirements:

1007.1 - Existing 5'-0" clear width of ramps not required for accessible use in fully accessible building.

1007.2 - Minimum allowable corridor width is 44", actual minimum width is 60".

f) Special Occupancy Requirements (Chapter 5)

1007.1 - Existing 5'-0" clear width of ramps not required for accessible use in fully accessible building.

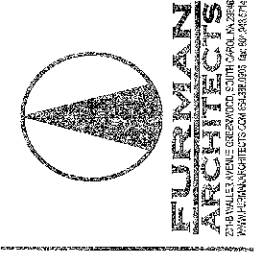
1007.2 - Minimum allowable corridor width is 44", actual minimum width is 60".

h) Minimum Number of Plumbing Fixtures (2203.4)

Floor	Occup.	Water Closets	Urinals	Wash Sinks	Drinking Fountains	Other
First Floor	Assembly (A-3)	25	0	0	0	0
Second Floor	Assembly (A-3)	25	0	0	0	0
First Floor Totals		50	0	0	0	0
Second Floor Totals		50	0	0	0	0

Copyright © 2005, L.D. Line, Inc. All rights reserved. LDILine.com

McMillan Smith & Partners
 Architects, PLLC



FURMAN ARCHITECTS
 1001 W. Main Street, Suite 100
 Greenville, SC 29604
 Phone: 864.656.5678 Fax: 864.656.9451

GREENWOOD GENETIC CENTER TREATMENT FACILITY
 Greenwood, SC

PROJECT NAME: GREENWOOD GENETIC CENTER TREATMENT FACILITY

REVISIONS:

NO.	DATE	DESCRIPTION	BY

BID DOCUMENTS 09/14/07

PRINCIPAL IN CHARGE: [Name]
 PROJECT ARCHITECT: [Name]
 DRAWN BY: [Name]

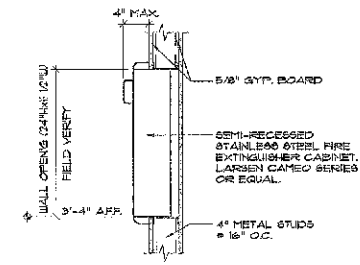
SHEET TITLE: CODE INFORMATION

SHEET NO. G10	PROJ. NO. 05061
SHT. 1 OF 22	DATE: 09/14/07

NOT USED

- ① THIRD STORY EXIT STAIR -- NO SHAFT ENCLOSURE REQUIRED AS PER IBC 2009 SECTIONS 1012 EXCEPTION 1 AND SECTION 1013 EXCEPT 4.
- ② THIRD STORY EXIT STAIR -- NO SHAFT ENCLOSURE REQUIRED AS PER IBC 2009 SECTIONS 1012 EXCEPTION 1 AND SECTION 1013 EXCEPT 4. STAIR PROVIDES MAINTENANCE ACCESS TO ATTIC.
- ③ HORIZONTAL STAIR IS NOT A REQUIRED MEANS OF EGRESS. LOBBY IS AN UNENCLOSED SHAFT AS PER 2009 IBC 1012, EXCEPT 1.

D1 DETAIL



D2 LIFE SAFETY KEY NOTES

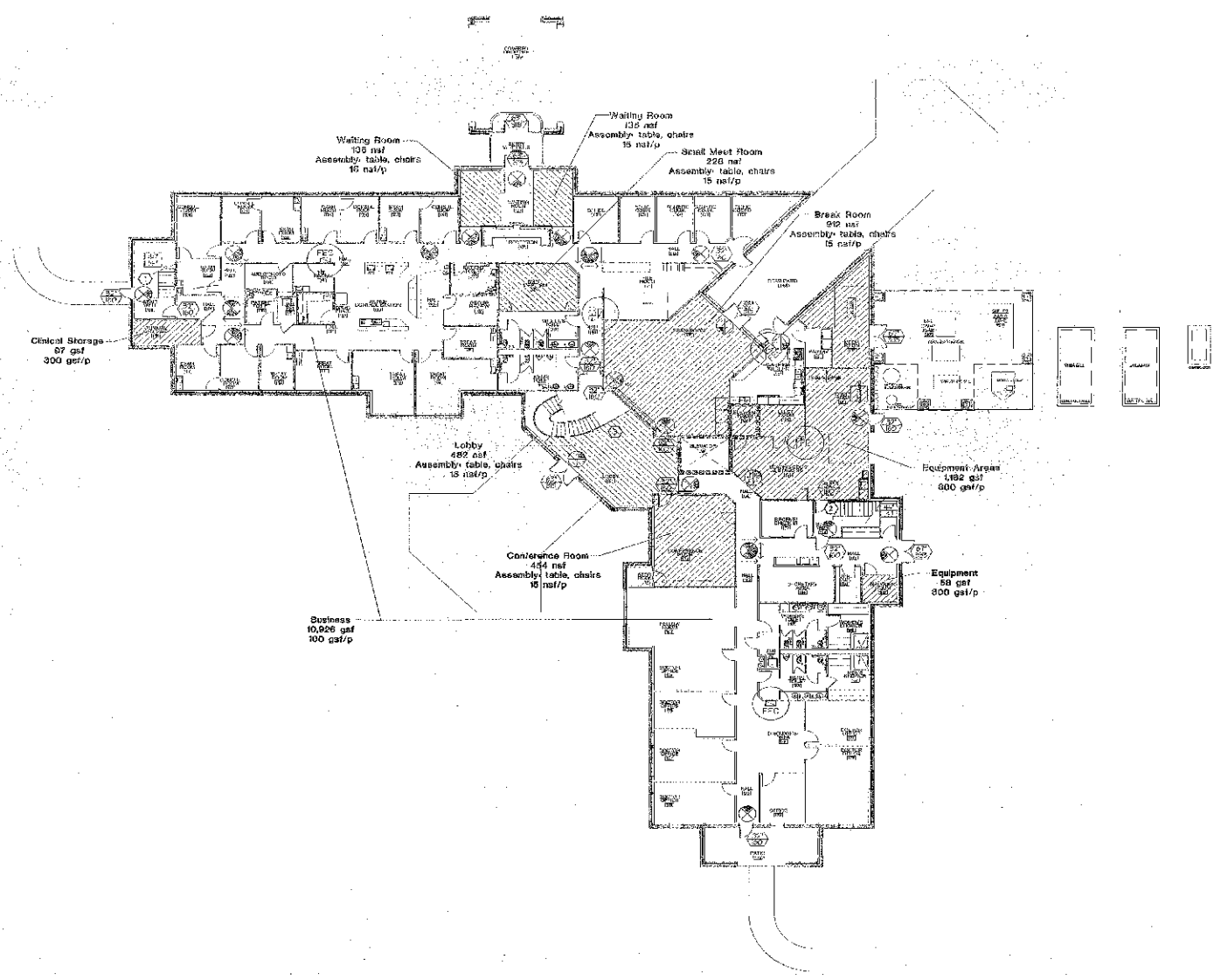
- ① ONE HOUR RATED FIRE BARRIER
- ② DIRECTIONAL EGRESS SYMBOLS. THIS DRAWING INDICATES ONLY THE REQUIRED EGRESS PATHWAYS. SEE ELEC. DRAWINGS FOR ACTUAL SIGNAGE PLACEMENT.
- ③ LEVEL EGRESS WIDTH AND CAPACITY
- ④ STAIR EGRESS WIDTH AND CAPACITY
- ⑤ KEY NOTE
- ⑥ FIRE EXTINGUISHER COMPONENT

C1 TYPICAL FIRE EXTINGUISHER CABINET DETAIL

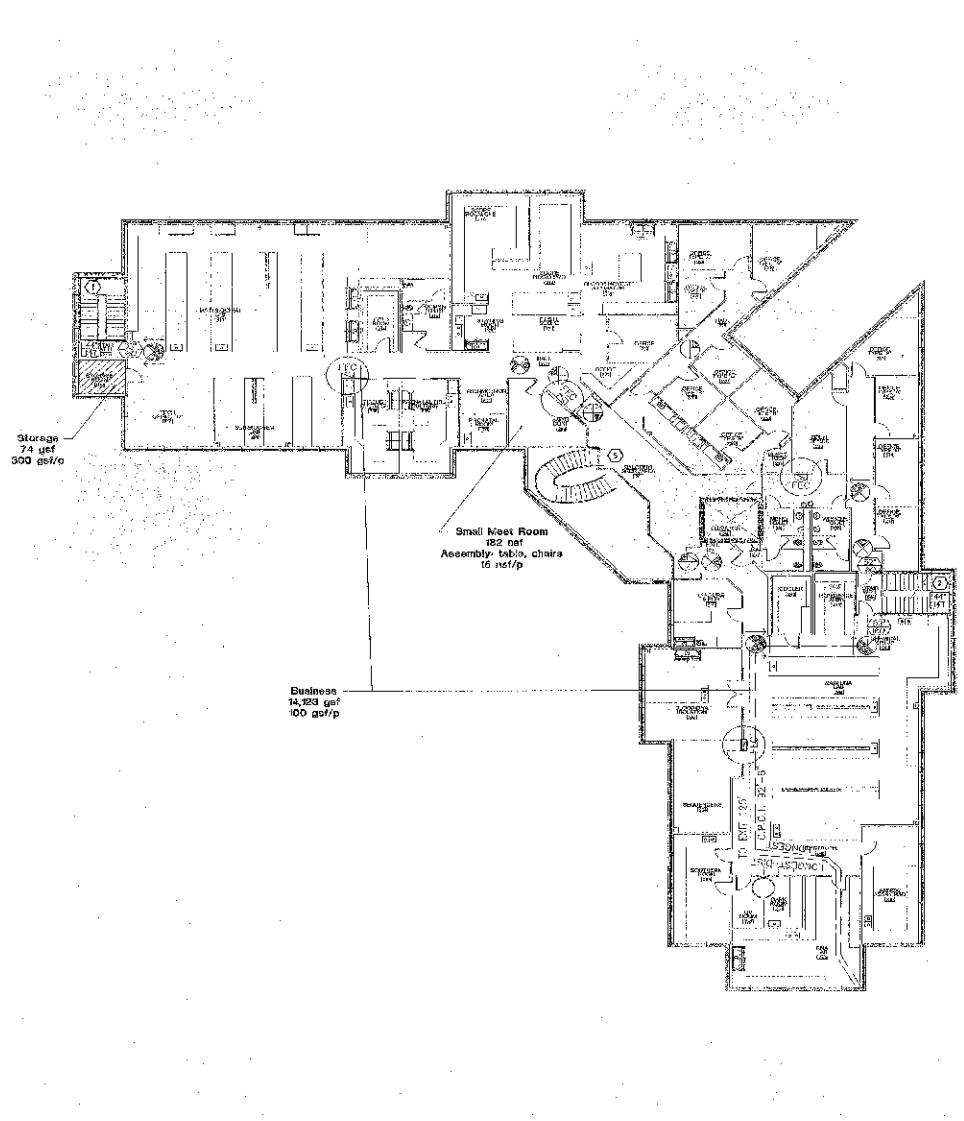
C2 LIFE SAFETY LEGEND

C3 DETAIL

General Occupancy Classification	Designation / Area Description / Smoke Compartment (SC)	Design Occupant Load	Occupancy Calculations Area (sq ft)	Occ. Load (Person) (sq ft per Person)	Occ. Load in Person (calculated)	Occ. Load in Person (IBC 101)	Egress Calculations Exit Egress Width (ft) (in) (ft)	Maximum Egress Capacity (Person)
FIRST FLOOR								
Business (B)	Office, Treatment, Ancillary area	Business	1385.0	100.0	138.5	138.0	346	2320.0
Business (B)	Waiting Room	Assembly, tables, chairs	271	15.0	18.1	18.0	62	420.0
Business (B)	Small Meeting Room	Assembly, tables, chairs	225	25.0	9.0	15.0	56	420.0
Business (B)	Conference Room	Assembly, tables, chairs	454	7.0	65.0	30.0	54	420.0
Business (B)	Reception	Assembly, tables, chairs	452	15.0	30.1	30.0	14	420.0
Assembly (A-2)	Break Room	Assembly, tables, chairs	112	15.0	7.5	6.0	127	846.7
Business (B)	Equipment Areas	Mechanical/Storage	124	300.0	0.4	4.0	132	1030.0
Business (B)	Central Storage	Mechanical/Storage	87	300.0	0.3	1.0	32	213.0
	gross area adjustment	Floor Total	2723.0				346	2320.0
SECOND FLOOR								
Business (B)	Labs, Offices, Ancillary area	Business	1394	100.0	139.4	139.0	0	440.0
Business (B)	Small Meeting Room	Assembly, tables, chairs	182	15.0	12.1	12.0	84	420.0
Business (B)	Equipment/Storage Rooms	Mechanical/Storage	173	300.0	0.6	1.0	0	180.0
	gross area adjustment	Floor Total	1749				84	440.0



A1 FIRST FLOOR LIFE SAFETY PLAN



A3 SECOND FLOOR LIFE SAFETY PLAN

McMillan Smith & Partners
Architects, PLLC

FURMAN ARCHITECTS

1000 W. GREENWOOD AVENUE
GREENWOOD, SC 29615
TEL: 803.733.1111 FAX: 803.733.1112

GREENWOOD GENETIC CENTER

TREATMENT FACILITY

Greenwood, SC

REVISIONS:

NO.	DATE	DESCRIPTION	BY

BID DOCUMENTS 09/14/07

PRINCIPAL IN CHARGE: [Signature] SC

PROJECT ARCHITECT: [Signature] SC

DRAWN BY: [Signature] RI/MKH/ACC

SHEET TITLE: LIFE SAFETY PLANS OCCUPANT LOAD DATA

SHEET NO. G1.11

PROJ. NO. 05061

DATE: 09/14/07

SHT 2 OF 22

COPYRIGHT 2008, INDIVIDUAL, SMIT, AND PARTNERS, AND FURMAN ARCHITECTS. ALL RIGHTS RESERVED.