

SPRINKLER SYSTEM NOTES:

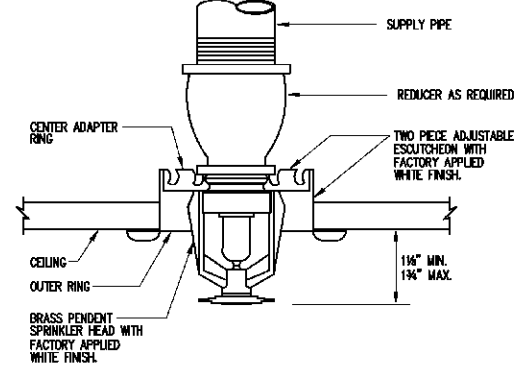
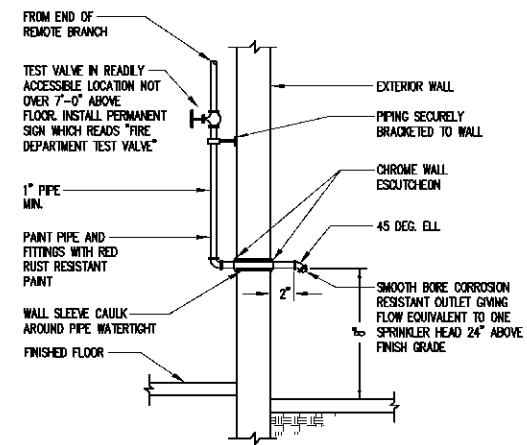
1. COMPLETE SPRINKLER SYSTEM SHALL BE DESIGNED AND INSTALLED IN ACCORDANCE WITH NFPA 13, STANDARD FOR THE INSTALLATION OF SPRINKLER SYSTEMS AND UFC 3-800-01, DESIGN: FIRE PROTECTION ENGINEERING FOR FACILITIES.
2. SPRINKLER SYSTEM SHALL BE HYDRAULICALLY CALCULATED. SUBMIT COMPLETE CALCULATIONS AND SHOP DRAWINGS FOR APPROVAL. CALCULATIONS SHALL BE BASED ON THE FOLLOWING DATA:

A. BUILDING CLASSIFICATION:	ORDINARY HAZARD GROUP II
B. DESIGN DENSITY:	0.20 GPM/SQ. FT.
C. REMOTE AREA OF CALCULATION:	3000 SQ. FT.
D. MAXIMUM COVERAGE PER SPRINKLER HEAD:	130 SQ. FT.
E. COMBINED OUTSIDE/INSIDE HOSESTREAM:	500 GPM
3. HYDRANT FLOW TEST DATA (TESTED 24 OCT 05):

A. HYDRANT LOCATION:	BUILDING A3380 (SEE SITE MAP)
B. STATIC PRESSURE:	80 PSI
C. RESIDUAL PRESSURE:	75 PSI
D. PILOT PRESSURE:	64 PSI
E. FLOW GPM:	1342 GPM
F. HYDRANT BUTT:	2-1/2"
G. COEFFICIENT:	0.90
4. THE FLOW TEST AS LISTED IS GIVEN AS A GUIDELINE FOR ESTABLISHING THE FLOW AND PRESSURE IN THIS AREA. CONTRACTOR SHALL CONDUCT ADDITIONAL FLOW TESTS FOR PREPARATION OF HIS HYDRAULIC CALCULATIONS.
5. DRAWINGS INDICATE THE SPRINKLER MAINS, BRANCH PIPING, AND SPRINKLER HEADS IN APPROPRIATE LOCATIONS. ADDITIONAL HEADS AND PIPING MAY BE REQUIRED TO PROVIDE ADEQUATE PROTECTION. CONTRACTOR SHALL PROVIDE A SYSTEM THAT MEETS OR EXCEEDS THE REQUIREMENTS OF NFPA 13 AND SPECIAL REQUIREMENTS OF AAFES.
6. CO-ORDINATE LOCATION OF SPRINKLER HEADS WITH LIGHT FIXTURES, CEILING DEFUSERS AND GRILLES, AND CEILING GRID. REFER TO ARCHITECTURAL, ELECTRICAL, AND MECHANICAL DRAWINGS FOR ADDITIONAL INFORMATION.
7. PROVIDE ACCESS PANEL WHERE VALVES AND/OR CONTROLS ARE CONCEALED IN CHASES, WALLS, ETC. PROVIDE LABEL ON PANEL DOOR.
8. CONTRACTOR SHALL NOT BEGIN THE INSTALLATION OF THE SPRINKLER SYSTEM UNTIL APPROVAL OF SUBMITTALS HAS BEEN OBTAINED.
9. CONTRACTOR SHALL INSTALL SPRINKLER HEADS CENTERED IN THE 2x4" CEILING TILES, AND IN THE CENTER OF THE 2x2" SQUARES ON THE SCORED 2x4" CEILING TILES.

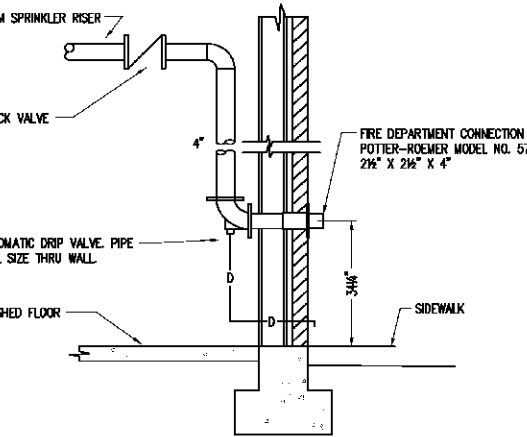
1L FIRE SUPPRESSION PLAN

17L SCHEDULES

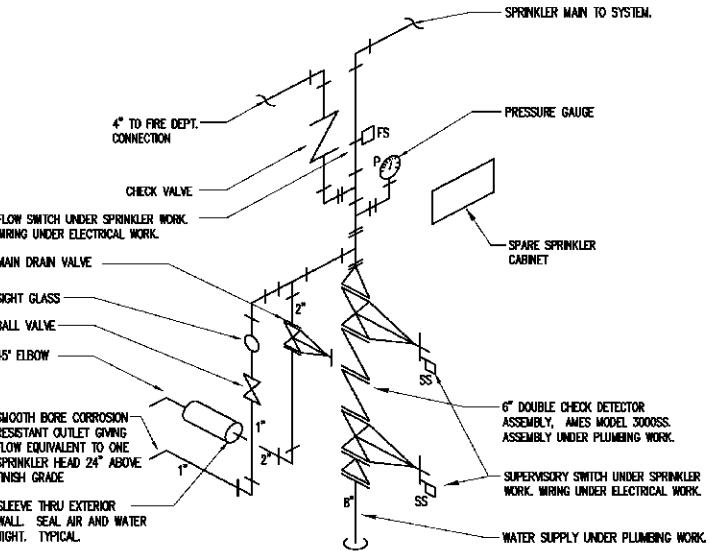


6G CEILING RECESSED PENDANT SPRINKLER HEAD

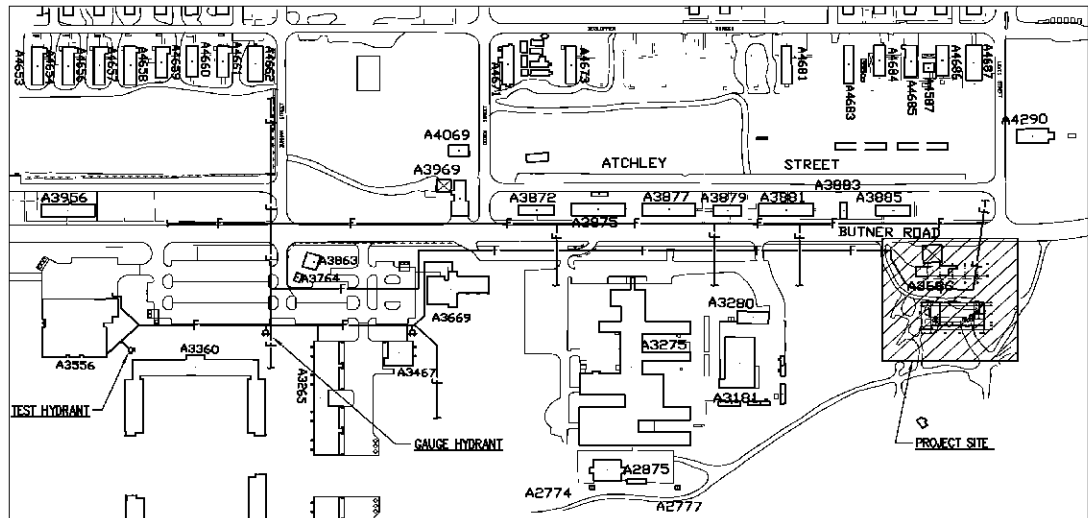
1F INSPECTOR'S TEST CONNECTION



1A FIRE DEPARTMENT CONNECTION



6A SPRINKLER RISER DIAGRAM



12A FIRE HYDRANT TESTING LOCATION MAP



REV. #	DESCRIPTION	DATE	BY



104 Brown Street Dayton, Ohio 45402
P: 937.223.7251 www.m-b-architects.com F: 937.223.6840

DRAWN BY:	PKB, FRM	REAL
CHECKED BY:	FRM	THIS DOCUMENT ORIGINALLY ISSUED AND SEALED BY: RANDY R. MCGOY 02-34-02
REVIEWED BY:	FRM	04-16-07
DATE:	4/16/07	THIS MEDIA SHOULD NOT BE CONSIDERED A CERTIFIED DOCUMENT.
SCALE:	AS NOTED	
PROJECT NO.:	0530-00-000024	



MINI-MALL / GAS / CAR WASH
FORT BRAGG, NORTH CAROLINA

FIRE SUPPRESSION PLAN / SCHEDULES / DETAILS
FP1.1