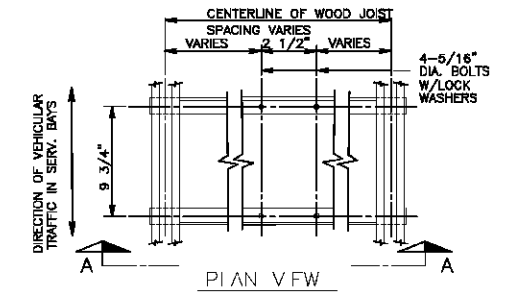
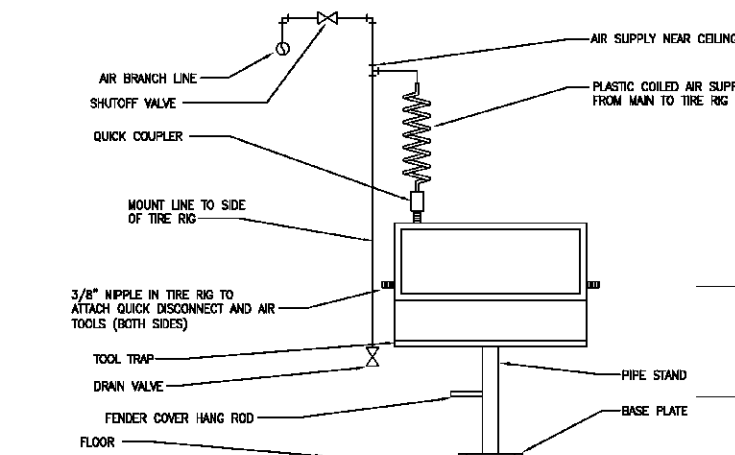


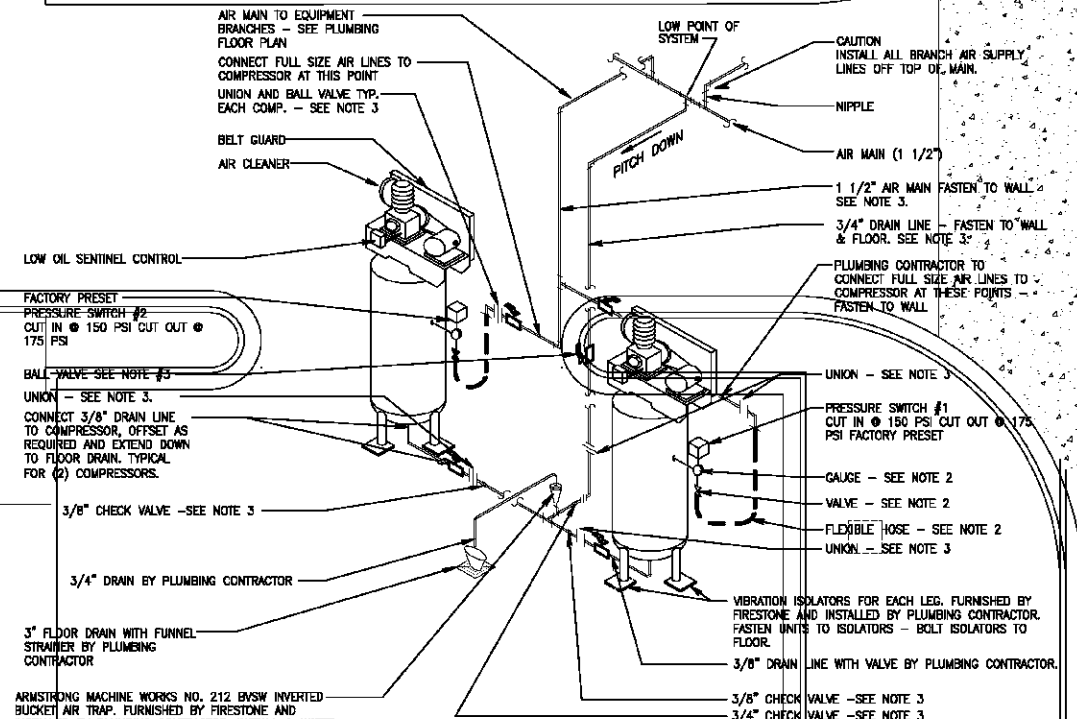
- NOTES:**
1. AIR HOSE REEL TO BE FURNISHED BY OWNER & INSTALLED BY CONTRACTOR.
 2. CONTRACTOR SHALL FABRICATE A SUITABLE STEEL MOUNTING BRACKET OR PLATE WITH STEEL ANGLE OR UNISTRUT AND BOLT TO JOIST.
 3. IF A JOIST IS LOCATED ON THE SAME CENTER LINE AS AIR REELS SHOWN ON THE PLUMBING PLAN, CONTRACTOR SHALL FABRICATE A SUITABLE STEEL MOUNTING BRACKET BOLT TO BOTTOM OF JOIST.



1 AIR HOSE REEL DETAIL N.T.S.

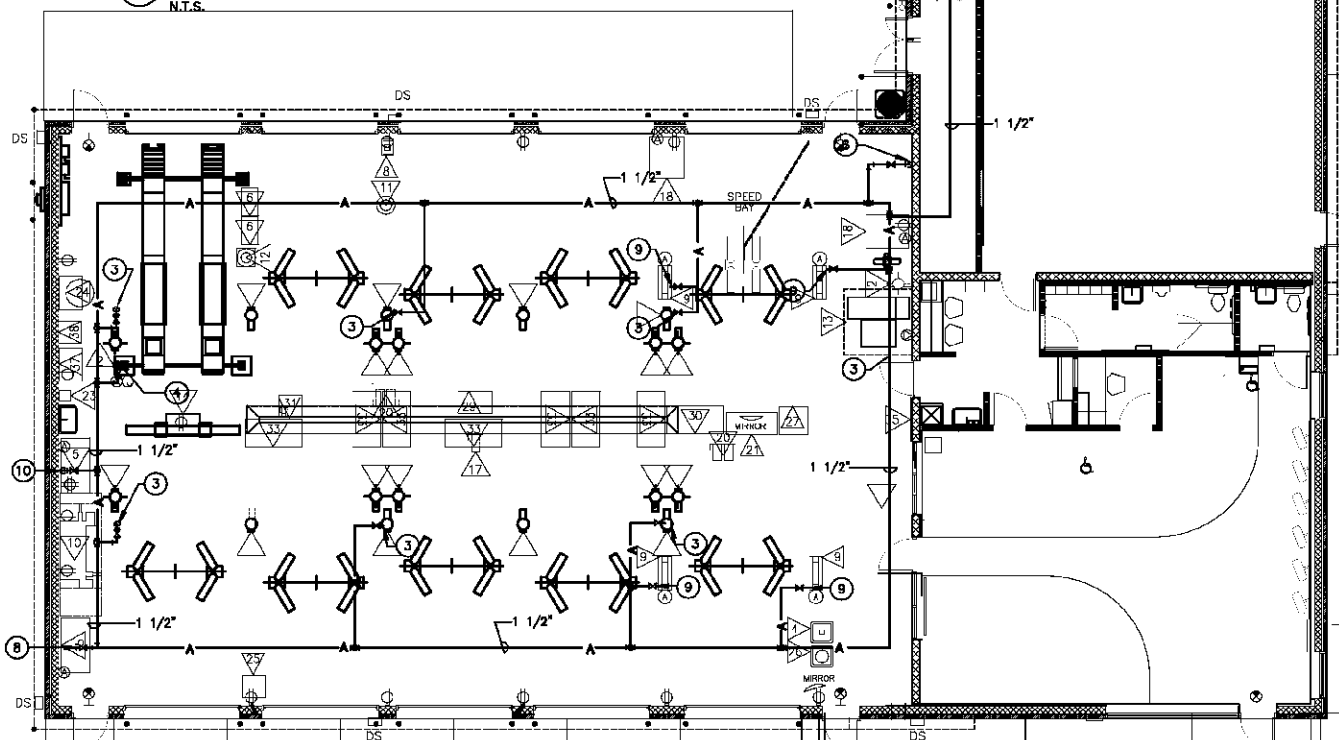


14 TIRE RIG DETAIL N.T.S.



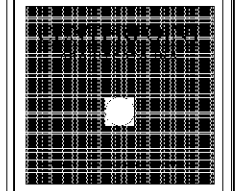
- AIR PIPING DETAIL NOTES:**
1. SEE PLUMBING PLAN FOR LOCATION OF COMPRESSORS, PIPE SIZES AND EQUIPMENT LOCATIONS.
 2. PRESSURE SWITCHES, GAUGES, VALVES, UNIONS AND FLEXIBLE HOSES FURNISHED BY COMPRESSOR MANUFACTURER.
 3. SET SPECIFICATIONS FOR TYPE OF PIPE, VALVES, UNIONS & CHECK VALVES FURNISHED & INSTALLED BY CONTRACTOR.
 4. TYPICAL DETAIL - PIPING CONNECTIONS AT COMPRESSORS MAY VARY ACCORDING TO MANUFACTURER. COMPRESSORS ARE TO BE FURNISHED BY OWNER AND INSTALLED BY CONTRACTOR.
 5. COMPRESSORS TO BE INSTALLED PER MANUFACTURER'S INSTRUCTIONS, AND SUPPLIED BY OWNER.

9 AIR PIPING DETAIL - TWO VERTICAL COMPRESSORS N.T.S.



AIR PIPING FLOOR PLAN SCALE 1/8" = 1'-0"

- NOTES:**
1. 3/4" AIR DOWN TO (2) AIR CONTROLS FOR TWIN POST HOIST. SEE TWIN POST HOIST CONTROL DETAIL (PLAN VIEW "A").
 2. 3/4" AIR DOWN TO DOUBLE LIFT CONTROLS WITH 1/2" AIR UNDER FLOOR TO EACH HOIST.
 3. OVERHEAD AIR HOSE REEL - 8 REQUIRED. SEE DETAIL FOR MOUNTING. SEE FUTURE PLAN FOR DIMENSIONS.
 4. 1/2" AIR DOWN TO ALIGNMENT RACK. MAKE FINAL CONNECTION TO RACK AFTER RACK IS IN PLACE.
 5. 1/2" AIR DOWN TO SINGLE LIFT CONTROL WITH 1/2" AIR UNDER FLOOR TO HOIST.
 6. 1/2" AIR DROP. SEE AIR SUPPLY DETAIL FOR RIM CLAMP TIRE CHANGER.
 7. 1/2" AIR TO BULK OIL STORAGE TANK.
 8. 1/2" AIR DROP FOR TANK MOUNTED AIR POWERED OIL PUMP. SEE USED OIL STORAGE SYSTEM.
 9. TIRE RIG - AIR DROP TO TIRE RIG WITH COILED AIR HOSE FROM OVERHEAD TO RIG. PROVIDE SHUTOFF VALVE OVER HEAD. SEE DETAIL ON SHEET.
 10. 1/2" AIR DOWN TO WORKBENCH AT +48" AFF



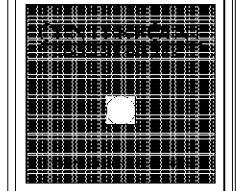
DATE	BY	CHKD	APP'D
06.28.07	TECHNICAL		

PROJECT	0423
DESCRIPTION	
DATE	
BY	
CHKD	
APP'D	

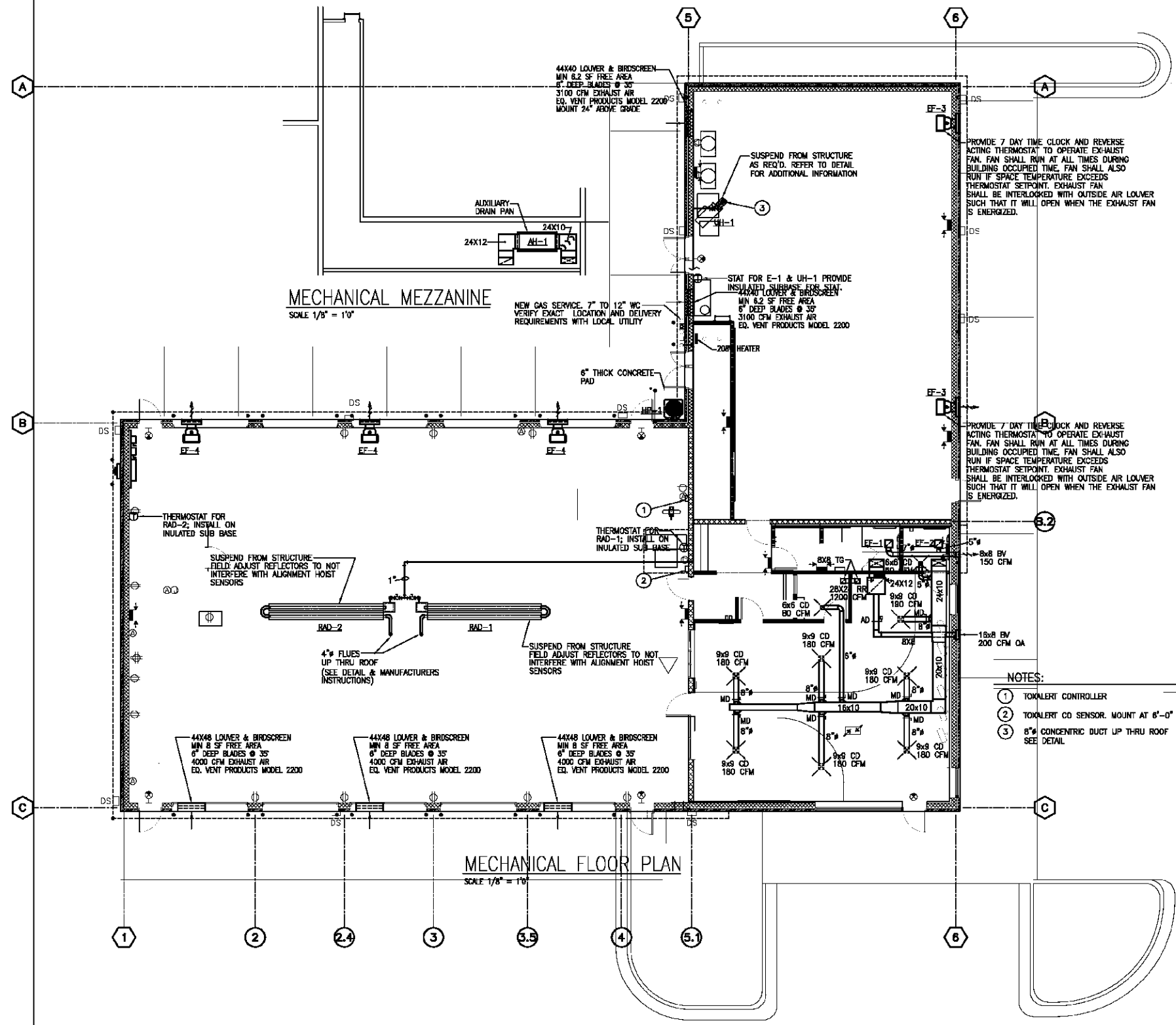
PROJECT	RE-F
DESCRIPTION	ARMY & AIR FORCE EXCHANGE SERVICE DEPARTMENTS OF THE ARMY & AIR FORCE
PROJECT	FIRESTONE CAR CARE CENTER
LOCATION	FT. JACKSON SC

PROJECT	RE-F
DESCRIPTION	ARMY & AIR FORCE EXCHANGE SERVICE DEPARTMENTS OF THE ARMY & AIR FORCE
PROJECT	FIRESTONE CAR CARE CENTER
LOCATION	FT. JACKSON SC
PROJECT	AIR PIPING FLOOR PLAN DETAILS
DATE	06.28.07
BY	NOTED
PROJECT	0632-03-00012
PROJECT	M1.1

MARTIN AVENUE

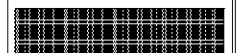


REV	DESCRIPTION	BY
01	ISSUE FOR CONSTRUCTION	LDI
02	REVISED TO ADDITIONAL	LDI
03	WORK IN PROGRESS	LDI



DESIGNED BY	DATE
0423	
CHECKED BY	DATE
DESIGNED BY	DATE
CHECKED BY	DATE

PROJECT NO.	0423
PROJECT NAME	
PROJECT ADDRESS	
PROJECT CITY	
PROJECT STATE	
PROJECT ZIP	



RE-F

ARMY & AIR FORCE EXCHANGE SERVICE
DEPARTMENTS OF THE ARMY & AIR FORCE

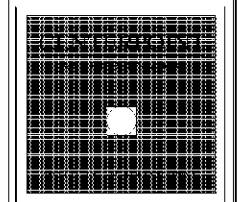
PROJECT
FIRESTONE CAR CARE
CENTER

FT. JACKSON, SC

**HVAC FLOOR
PLAN**

DATE	06.28.07	NOTED	
PROJECT NO.	0632-03-000012	PROJECT NAME	

M1.2



DESIGNED BY	DATE	SCALE
PROJECT NO.	DATE	SCALE
REVISED BY	DATE	SCALE

UNIT NO.	TOTAL COOLING (MBH)	SENSIBLE COOLING (MBH)	LATENT COOLING (MBH)	SEER	OUTDOOR TEMP-COOLING	TOTAL HEATING (MBH)	HSPF	DDP	OUTDOOR TEMP-HEATING	FLA	MCA	MDCP	VOLT/PHASE	TRANE MODEL NUMBER	REMARKS
HP-1	48.5	38.7	11.8	14	95FDB/78FHW	44.5	8.40	3.54	25FDB/23.5FHW	24.5	30	50	208/230-1	4TRX4048A1	1, 2, 3, 4

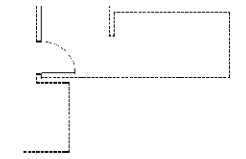
REMARKS:
 1. UNIT SHALL BE EQUIPPED WITH A DIGITAL THERMOSTAT.
 2. UNIT SHALL BE EQUIPPED WITH AN ADJUSTABLE OUTDOOR AIR THERMOSTAT.
 3. UNIT SHALL BE EQUIPPED WITH ANTI-SHOCK-CYCLE TIMER AND TRV VALVE.
 4. UNIT SHALL HAVE LOW AMBIENT COOLING CAPACITY AND EVAPORATOR DEFROST CONTROL.

UNIT NO.	AIR CFM	APPROX. S.P.W.G.	FAN H.P.	COOLING ENT AIR TEMP	COOLING LWS TEMP	OUTSIDE AIR CFM	OUTDOOR TEMP-COOLING	ELEC HEAT (240V-1P)	FLA	MCA	MDCP	VOLT/PHASE	TRANE MODEL NUMBER	REMARKS
AH-1	1400	0.5	3/4	78.9FDB/62.8FHW	52.4FDB/51.1FHW	200	95FDB/78FHW	9.8KW	46.8	36	60	240-1	4TE3F48A	1

REMARKS:
 1. UNIT SHALL BE WIRED FOR SINGLE POINT CONNECTION.

1. ACCEPTABLE MANUFACTURERS/SERIES (NO SUBSTITUTIONS WILL BE ALLOWED): A. ROBERTS/GORDON, INC. - CH2 SERIES B. DETROIT RADIANT PRODUCTS/RE-MEMBER-WAY - DR2 SERIES C. SOLARONICS - STU SERIES D. SPACERAY
2. UNIT SHALL BE COMPLETE WITH LOW VOLTAGE THERMOSTAT AND ALUMINIZED COATING ON RADIANT HEAT PIPE FOR CORROSION RESISTANCE.
3. PROVIDE SHUTOFF COCK AND GAS PRESSURE REGULATOR (WHEN NEEDED) CAPABLE OF REDUCING SYSTEM GAS PRESSURE DOWN TO RADIANT HEATER REQUIRED PRESSURE AT EACH BURNER.
4. UNITS TO BE SHUT OFF WHEN EXHAUST FAN E-5 IS ACTIVATED, (BY CO2 SENSOR)
5. RAD-1 & RAD-2 SHALL HAVE 100,000 BTU/HR INPUT. MOUNT UNITS AT 12" AFF.

SUMMER		WINTER	
INDOOR	OUTDOOR	INDOOR	OUTDOOR
75FDB	95FDB	70FDB	25FDB
80% RH	77FHW	40%RH	23.5FHW



MARK	DESCRIPTION	MARK	DESCRIPTION	MARK	DESCRIPTION
CFM	CUBIC FEET PER MINUTE	→	RETURN OR EXHAUST AIR	⊠	SUPPLY OR OUTSIDE AIR DUCT IN SECTION
DN	DOWN	⊙	THERMOSTAT	⊠	RETURN OR EXHAUST AIR DUCT IN SECTION
CD	CEILING DIFFUSER (TITUS TDCA-M)	⊙	SMOKE DETECTOR	⊠	RETURN OR EXHAUST AIR DUCT IN SECTION
FG	FILTER GRILLE (TITUS 4F)	EX	EXISTING	W X H	DUCT SIZE (FIRST DIMENSION AS VIEWED)
QA	OUTSIDE AIR	W/FD	WITH FIRE DAMPER	⊠	CEILING TYPE AIR DIFFUSER RECTANGULAR 4-WAY SHOWN
EF	EXHAUST FAN	⊙	TIE NEW EQUIPMENT INTO EXISTING	⊠	CEILING EXHAUST OR RETURN AIR REGISTER
REG	REGISTER (TITUS 300FS)	→	TURNING VANES IN DUCT	⊠	CHECK VALVE
RR	RETURN REGISTER (TITUS 355)	→	MANUAL DAMPER		
→	SUPPLY AIR	→	GATE VALVE		
⊠	FLOW CONTROL VALVE				

MARK	CFM	S.P. W.G.	MIN. WATTS	MAX. RPM	MAX. SONES	FAN TYPE	DRIVE TYPE	EQUAL TO GREENCHECK #	CONTROL OR INTERLOCK	NOTES
EF-1	100	0.25	48	900	1.3	CENTR.	D.D.	SP-A200	LIGHT SWITCH	1, 2, 3, 4
EF-2	50	0.125	20	850	.5	CENTR.	D.D.	SP-A70	LIGHT SWITCH	1, 2, 3, 4
EF-3	3100	0.125	1/2	1160	8.1	CENTR.	D.D.	SET-24-42E-B5	T-STAT	1, 2, 3
EF-4	4000	0.125	1/2	1160	8.4	CENTR.	D.D.	SET-24-42E-B5	CO2 SENSOR	1, 2, 3

1. ALL FANS SHALL BE COMPLETE WITH BACKDRAFT DAMPERS, DISCONNECT, TIME DELAY, WHITE ALUMINUM GRILLE, ISOLATOR KIT.
 2. UNIT SHALL BE EQUIPPED WITH SOLID STATE SPEED CONTROL SHIPPED LOOSE AND FIELD MOUNTED FAN SPEED CONTROL.
 3. EXHAUST FAN SHALL NOT RUN DURING UNOCCUPIED HOURS.
 4. INSTALL TIME-DELAY SWITCH

GENERAL MECHANICAL NOTES

- FURNISH ALL LABOR, EQUIPMENT, AND MATERIALS TO PROVIDE A COMPLETE MECHANICAL SYSTEM. DUE TO THE SCHEMATIC NATURE OF THESE PLANS, THE CONTRACTOR SHALL FIELD-VERIFY LOCATIONS FOR EQUIPMENT, DUCTWORK, AND ACCESSORIES. IN ADDITION, THIS WORK SHALL BE COORDINATED WITH OTHER TRADES TO AVOID CONFLICTS. THE CONTRACTOR SHALL ALSO REVIEW THE STRUCTURAL DRAWINGS BEFORE FABRICATING AND INSTALLING DUCTWORK OR EQUIPMENT.
- ALL WORK SHALL BE PERFORMED BY SKILLED AND EXPERIENCED WORKMEN. WORK SHALL COMPLY WITH ALL APPLICABLE STATE AND LOCAL CODES. THIS CONTRACTOR SHALL BE RESPONSIBLE FOR ALL REQUIRED PERMITS, LICENSES, AND INSPECTIONS.
- ALL MATERIALS SHALL BE NEW AND WITHOUT DEFECTS. SUBMIT SHOP DRAWINGS FOR ALL MATERIALS AND EQUIPMENT. ALL WORK DONE BY THIS CONTRACTOR SHALL BE WARRANTED FOR ONE YEAR FROM THE TIME THE OWNER GIVES ACCEPTANCE OR GAINS BENEFICIAL USE, WHICHEVER IS FIRST. ALL EQUIPMENT SHALL BE INSTALLED PER MANUFACTURER'S RECOMMENDATIONS.
- DUCT SIZES ON DRAWINGS ARE INSIDE CLEAR DIMENSIONS. DUCT SHALL BE OF LOW-PRESSURE (1.0" w.g.) CONSTRUCTION AS CLASSIFIED BY SMACNA UNLESS OTHERWISE NOTED. ALL DUCT SHALL HAVE MINIMUM 1" INTERNAL LINER FOR THE FIRST 20 FEET FOR SOUND ATTENUATION. AFTER 20 FEET, THE CONTRACTOR MAY USE 1" MINIMUM LINER OR 2" EXTERNAL WRAP (MINIMUM R-4.2 FOR BOTH), MINIMUM 1" THICK, 475 E-RATED DUCTBOARD MAY BE USED WITH THE APPROVAL OF THE OWNER AND THE ARCHITECT.
- FLEXIBLE DUCT MAY BE INSTALLED ONLY WHERE SHOWN ON THE DRAWINGS. DUCT SHALL BE EXTERNALLY-INSULATED CORRUGATED METAL WITH A MAXIMUM LENGTH OF 8'-0" FOR TAKE-OFFS LONGER THAN 8'-0", THE REMAINDER OF THE DISTANCE SHALL BE EXTERNALLY-WRAPPED SINGLE-WALL ROUND DUCT WITH A SPIN-IN STYLE TAP AT THE MAIN DUCT.
- HANGERS FOR EQUIPMENT AND PIPING SHALL BE SECURED TO THE BUILDING STRUCTURE. NO HANGERS SHALL BE ATTACHED TO THE FLOOR OR ROOF DECK MATERIAL, OR CONCRETE DECKS LESS THAN 4" THICK.
- ALL RETURN AND EXHAUST GRILLES SHALL HAVE OPPOSED-BLADE DAMPERS. ALL SUPPLY-SIDE TAKE-OFFS SHALL HAVE A BALANCING DAMPER.
- FIRE DAMPERS AND FIRE-STOPPING SHALL BE PROVIDED FOR ANY PENETRATIONS OF FIRE-RATED PARTITIONS. VERIFY LOCATIONS OF ALL FIRE-STOPPING ON THE ARCHITECTURAL DRAWINGS.
- ALL GRILLES AND REGISTERS SHALL BE EQUAL TO TITUS WITH ALUMINUM CONSTRUCTION. SUPPLY GRILLES SHALL BE EQUAL TO MODEL TDC. SUPPLY REGISTERS SHALL BE EQUAL TO MODEL 301. RETURN, EXHAUST AND TRANSFER GRILLES SHALL BE EQUAL TO MODEL 355 WITH OPPOSED-BLADE DAMPERS. GRILLE FINISH SHALL BE APPROVED BY THE OWNER AND THE ARCHITECT.
- EQUIPMENT INSTALLED UNDER THIS CONTRACT SHALL BE ABLE TO PROVIDE THE REQUIRED CAPACITIES IN THE MIDDLE OF ITS PERFORMANCE RANGE. ALL COMPRESSORS SHALL HAVE A MINIMUM 5-YEAR WARRANTY UNLESS OTHERWISE NOTED. THE EQUIPMENT SHALL HAVE ALL THE NECESSARY CONTROLS AND ACCESSORIES TO ALLOW FOR FULL OPERATION. IF EQUIPMENT HAS COMPONENTS OF A VIBRATIVE NATURE, THE CONTRACTOR SHALL PROVIDE THE NECESSARY VIBRATION CONTROLS.
- REFRIGERANT PIPING SHALL BE HARD-DRAWN TYPE K OR L COPPER WITH COPPER SOLDER FITTINGS. PIPING SHALL BE SOLDERED WITH SILVER SOLDER AND INSULATED WITH 1/2" THICK THERMAL TUBULAR JACKETING. SEAL INSULATION JOINTS WITH TAPE AND CEMENT OR PER MANUFACTURER'S INSTRUCTIONS. PRE-INSULATED AND PRE-CHARGED REFRIGERANT LINES MAY BE USED AS PROVIDED BY THE EQUIPMENT MANUFACTURER. WHERE INSULATION IS EXPOSED TO WEATHER PROTECT LINES WITH AN ALUMINUM COVER AND PAINT TO MATCH EXTERIOR FINISH.
- CONDENSATE DRAINS SHALL BE FULL-SIZE (1" MINIMUM) COPPER OR SCHEDULE 40 PVC. DRAINS SHALL BE INSULATED IN THE SAME MANNER AS REFRIGERANT LINES. DISCHARGE AS SHOWN ON THE DRAWINGS.
- CONTROLS SHALL BE EQUAL TO MANUFACTURER'S CONTROLS. OUTDOOR UNITS SHALL HAVE FACTORY-WIRED TIME DELAYS, PRESSURE SWITCHES, LOW-AMBIENT CONTROLS AND DEFROST CONTROLS. THERMOSTATS SHALL BE DIGITAL AND PROGRAMMABLE WITH BATTERY BACK-UP. SETPOINTS SHALL FOLLOW DESIGN CONDITIONS OR BE AS DIRECTED BY THE OWNER. MOUNT ALL THERMOSTATS AND TEMPERATURE SENSORS 60" A.F.F.
- THE HVAC SYSTEM SHALL BE TESTED AND BALANCED ACCORDING TO ASHRAE STANDARDS. THE CONTRACTOR SHALL PROVIDE THE ARCHITECT WITH A COPY OF THE TEST AND BALANCE REPORT AND THE OWNER WITH A LETTER STATING THAT THE SYSTEM(S) HAVE BEEN BALANCED TO WITHIN 10% OF DESIGN PARAMETERS.

TAG	PHYSICAL DATA				ELECTRICAL DATA				
	CFM	INPUT	OUTPUT	THROW	HP	VOLTAGE	PHASE	NOTES	
UH-1	FINNED TUBULAR	1960	150 MBH	120 MBH	68"	1/8	115	1	1, 2, 3

1. UNIT SHALL BE COMPLETE WITH CONTROL TRANSFORMER RELAY PACKAGE, 24V REVERSE ACTING THERMOSTAT WITH NIGHT SETBACK.
 2. PROVIDE SHUTOFF COCK AND GAS PRESSURE REGULATOR CAPABLE OF REDUCING SYSTEM GAS PRESSURE DOWN TO RADIANT HEATER REQUIRED PRESSURE AT EACH BURNER.
 3. UNIT TO HAVE VERTICAL VENT TERMINAL AND CONCENTRIC ADAPTER, VIBRATION ISOLATION HANGER RODS OR APPROVED EQUAL.

PROJECT: FIRESTONE CAR CARE CENTER

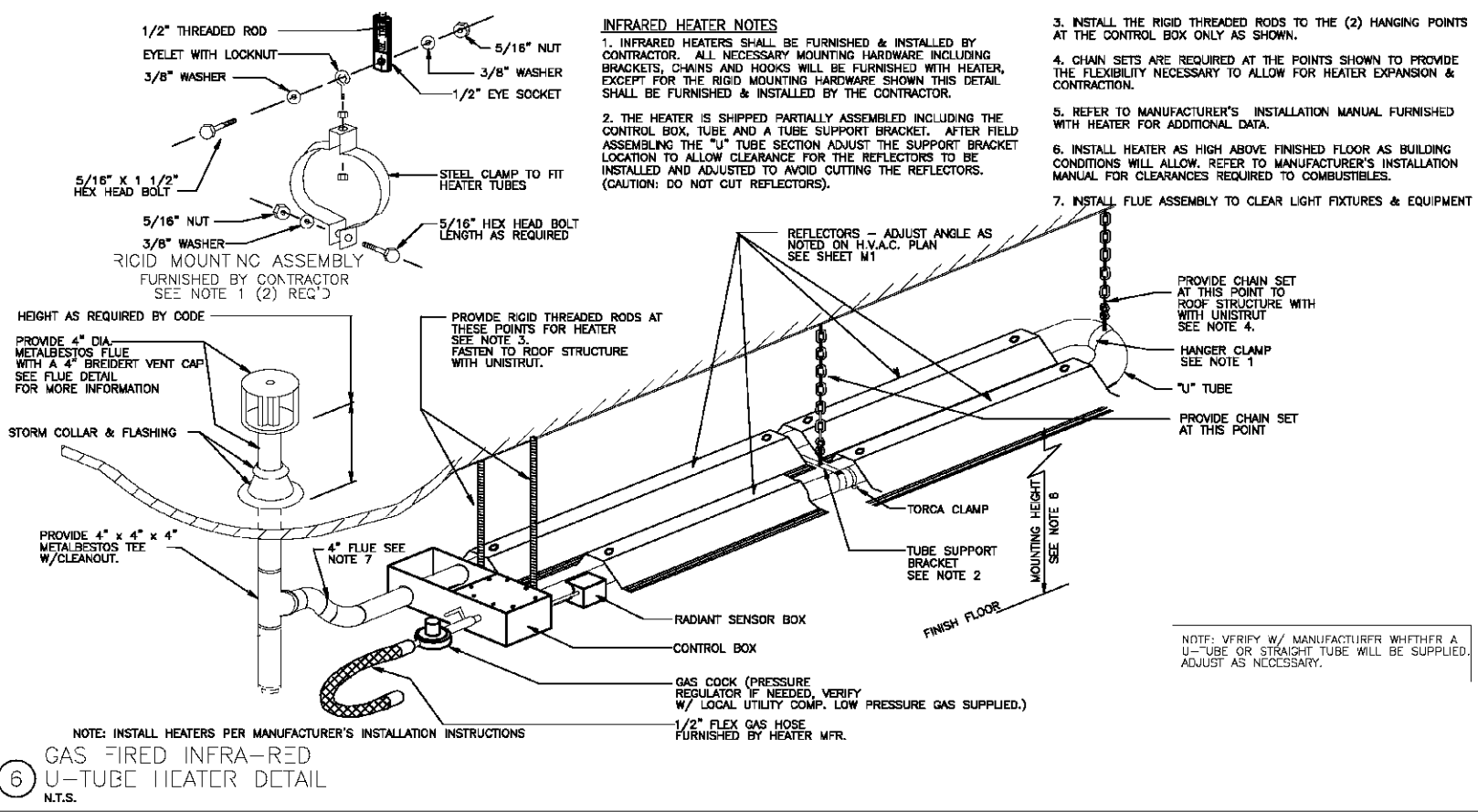
FT. JACKSON, SC

MECHANICAL SCHEDULES, NOTES & LEGEND

DATE: 06.28.07

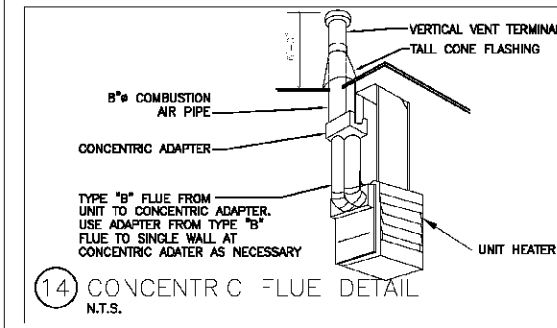
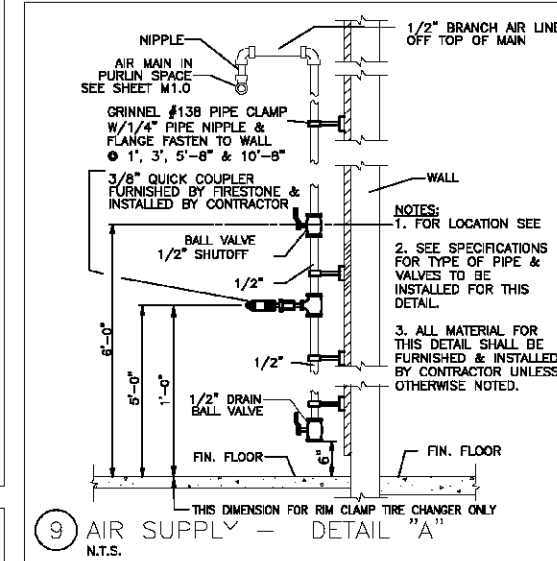
NOTED: M2.1

0632-03-000012



MECHANICAL DETAIL NOTES

- SUSPEND UNIT HEATER AND RADIANT TUBE HEATERS FROM UNISTRUT CHANNELS MOUNTED TO ROOF PURLINS WITH VIBRATION ISOLATORS EQUIPPED HANGER RODS OR AN APPROVED EQUAL METHOD.
- ALL EQUIPMENT FURNISHED BY CONTRACTOR SHALL HAVE MAGNETIC STARTERS OF SIZE AND CAPACITIES AS REQ'D. FOR PROPER EQUIPMENT OPERATION. FURNISH WEATHER-PROOF BOXES FOR EXTERIOR USE.
- EXTEND ALL METALBESTOS FLUES OF DIAMETERS SHOWN THROUGH ROOF TO HEIGHT REQ'D. BY CODE W/ALUMINUM ROUND TOP. PROVIDE VENTILATING THIMBLE THROUGH ROOF FOR CLEARANCE AROUND STACK AND SUPPORT SECURELY PROVIDE RAIN COLLAR AND FLASHING.
- ALL THERMOSTATS TO BE FURNISHED BY HVAC CONTRACTOR, TO ELECTRICAL CONTRACTOR FOR INSTALLATION.
- FURNISH AND INSTALL CODE AND FIRE MARSHAL APPROVED FIRE DAMPERS W/FUSIBLE LINKS AND ACCESS PANELS IN DUCT WORK ON BOTH SIDES OF ROOF OR WALLS, IF AND AS REQ'D. BY CODE.
- COOLING UNIT TO HAVE LOW AMBIENT CONTROL TO PERMIT STABLE OPERATION TO 40° OUTSIDE AIR.
- WIRING SCHEMATICS OF ALL HVAC EQUIPMENT SHALL BE FURNISHED BY HVAC CONTRACTOR TO ELECTRICAL CONTRACTOR.
- ADJUST ALL FANS TO PROPER RPM TO ASSURE CFM REQUIRED AND BALANCE ALL GRILLES AND DIFFUSERS TO CFM SHOWN ON DRAWINGS.
- WHERE DRAWINGS AND SPECS. EXCEED GOVERNING CODE REQUIREMENTS, DESIGN SHALL GOVERN. INSTALL NO WORK CONTRARY TO OR BELOW MINIMUM LEGAL STANDARDS, WHETHER DRAWINGS AND SPECS. FULLY COMPLY OR NOT.
- RUN ALL PIPING IN JOISTS SPACE WHERE POSSIBLE.
- ALL BALL VALVES TO BE ACCESSIBLE TO ASSOCIATES W/O THE USE OF A LADDER OR STEP-STOOL.



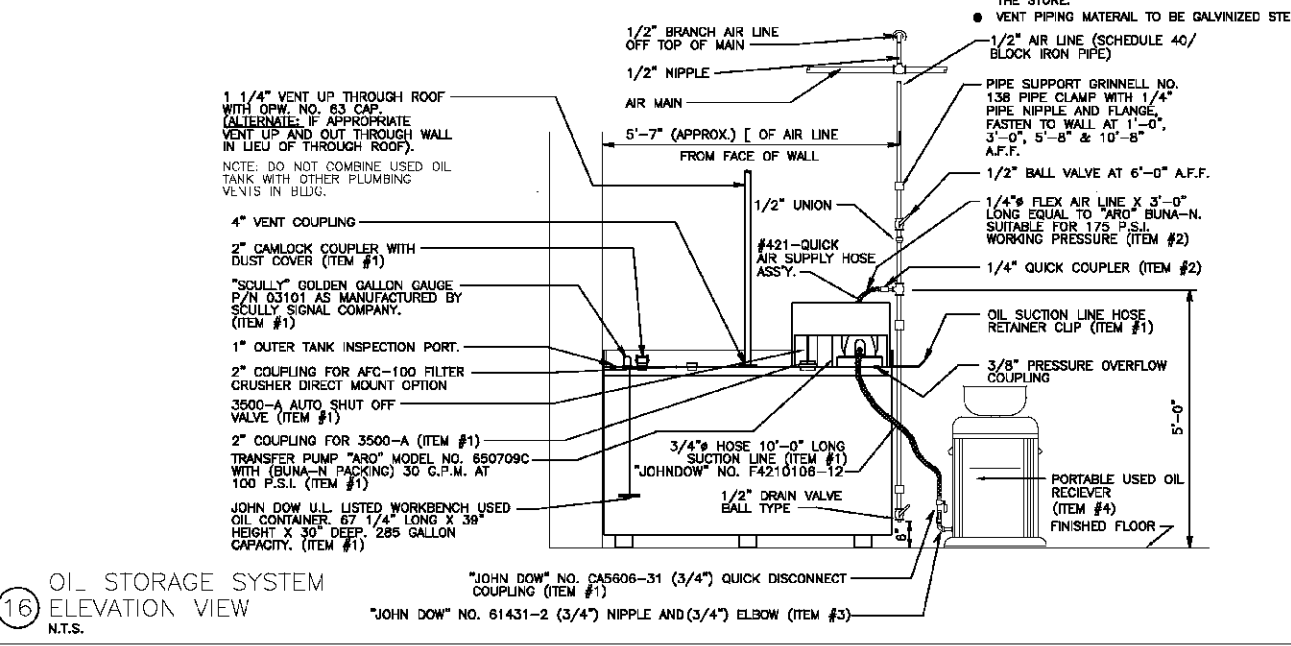
USED OIL STORAGE SYSTEM INSTALLATION

BILL OF MATERIAL - OWNER FURNISHED ITEMS

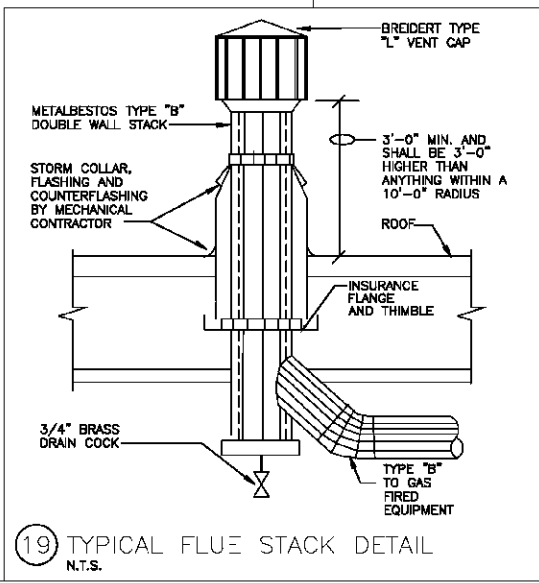
ITEM#	DESCRIPTION
1	JOHN DOW DOUBLE WALL WASTE OIL TANK COMPLETE WITH AIR OPERATED "ARO" DIAPHRAGM PUMP, AUTOMATIC AIR SHUTOFF, LIQUID LEVEL GAUGE, 2" CAMLOCK COUPLER, 10" X 3/4" INLET HOSE WITH QUICK DISCONNECT COUPLER, QUICK DISCONNECT ADAPTER KIT, AND AIR FILTER REGULATOR, SIZE 67 1/4" L X 39" H X 30" W. WEIGHT : 1100 LBS. NOTE: TANK ASSEMBLY IS U.L. LISTED (MEETS UL-142 SPECIFICATIONS)
2	1/4" FLEX HOSE 3'-0" LONG (175 P.S.I.) AND 1/4" QUICK COUPLER ("JOHN DOW" NO. 421-QUICK).
3	JOHN DOW NO. 61431-2 (3/4" ADAPTER) WITH 3/4" NIPPLE AND 3/4" ELBOW. (1) REQUIRED FOR EACH ITEM #4 FURNISHED.
4	PORTABLE USED OIL RECEIVER (STORE EQUIPMENT ITEM) QUANTITY TO BE DETERMINED. SEE BUILDING STORE PLANNING LAYOUT - SHEET F1.

- GENERAL NOTES:**
- OWNER WILL FURNISH SPECIALTY ITEMS FOR CONTRACTOR INSTALLATION PER LIST ON THIS SHEET. ALL COMPONENTS LISTED WITH ITEM #1 COME PRE-ASSEMBLED.
 - ALL OTHER MATERIAL FOR THIS DETAIL SHALL BE FURNISHED AND INSTALLED BY PLUMBING CONTRACTOR UNLESS OTHERWISE NOTED.
 - SEE SPECIFICATIONS FOR TYPE OF PIPE & FITTINGS TO BE FURNISHED & INSTALLED.
 - PROVIDE EARTH GROUND TO AIR OPERATED OIL PUMP PER MANUFACTURER'S SPECIFICATION AND/OR PER N.E.C. CODE REQUIREMENTS.
- INSTALLATION NOTES:**
- CONTACT LOCAL FIRE MARSHAL AND OBTAIN INSTALLATION PERMISSION AND/OR PERMITS.
 - DETERMINE INSTALLATION LOCATION BY EITHER, REVIEWING BUILDING STORE PLANNING LAYOUT (SHEET F1), FOR NEW STORES, OR BY STORE MANAGER SELECTION AT EXISTING STORES.
 - UNCRATE PRE-ASSEMBLED TANK (ITEM #1) AND MOVE INTO POSITION USING EITHER THE "LEFT-HAND" OR "RIGHT-HAND" INSTALLATION DETAILS SHOWN ON THIS SHEET.
 - INSTALL AIR LINE FROM MAIN AND INSTALL FLEX HOSE (ITEM #2) CONNECTION TO TANK.
 - CONNECT VENT LINE TO TANK AND RUN VENT TO EXTERIOR THROUGH ROOF. INSTALL ROOF FLASHING AND WEATHER CAP AS NOTED. VENT THROUGH WALL AS AN ALTERNATE.
 - CONNECT QUICK DISCONNECTS (ITEM #3) TO EACH PORTABLE USED OIL COLLECTION RECEIVER AT THE STORE.
 - VENT PIPING MATERIAL TO BE GALVANIZED STEEL OR BLACK IRON.

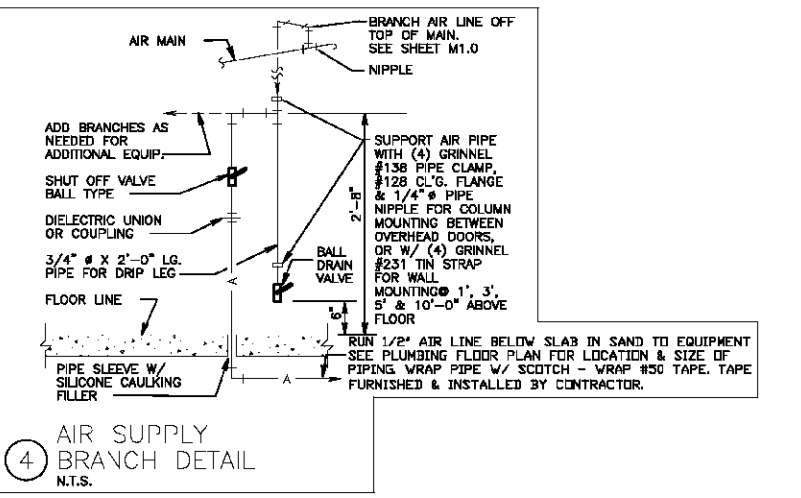
NOTE:
LEFT HAND TANK INSTALLATION IS AS SHOWN ON THIS SHEET; "RIGHT HAND" INSTALLATION IS OPPOSITE HANDED.



16 OIL STORAGE SYSTEM ELEVATION VIEW N.T.S.



19 TYPICAL FLUE STACK DETAIL N.T.S.



4 AIR SUPPLY BRANCH DETAIL N.T.S.

THE GAVETAVEN JO
MONTEFELY A. ARAMA S. H. T.
THE GAVETAVEN JO
MONTEFELY A. ARAMA S. H. T.

DATE	REVISED	BY
11/14/05	TEC. REVISION	PKP
11/14/05	REVISION	PKP

NO.	DATE	BY
0423		

DESCRIPTION	DATE



RE-F

ARMY & AIR FORCE EXCHANGE SERVICE
DEPARTMENTS OF THE ARMY & AIR FORCE

FIRESTONE CAR CARE CENTER

FT. JACKSON, SC

MECHANICAL DETAILS

DATE	REVISED	BY
06.28.07	NOTED	

0632-03-000012

M2.2