

DATE	DESCRIPTION	BY

**FIRE PROTECTION NOTES**

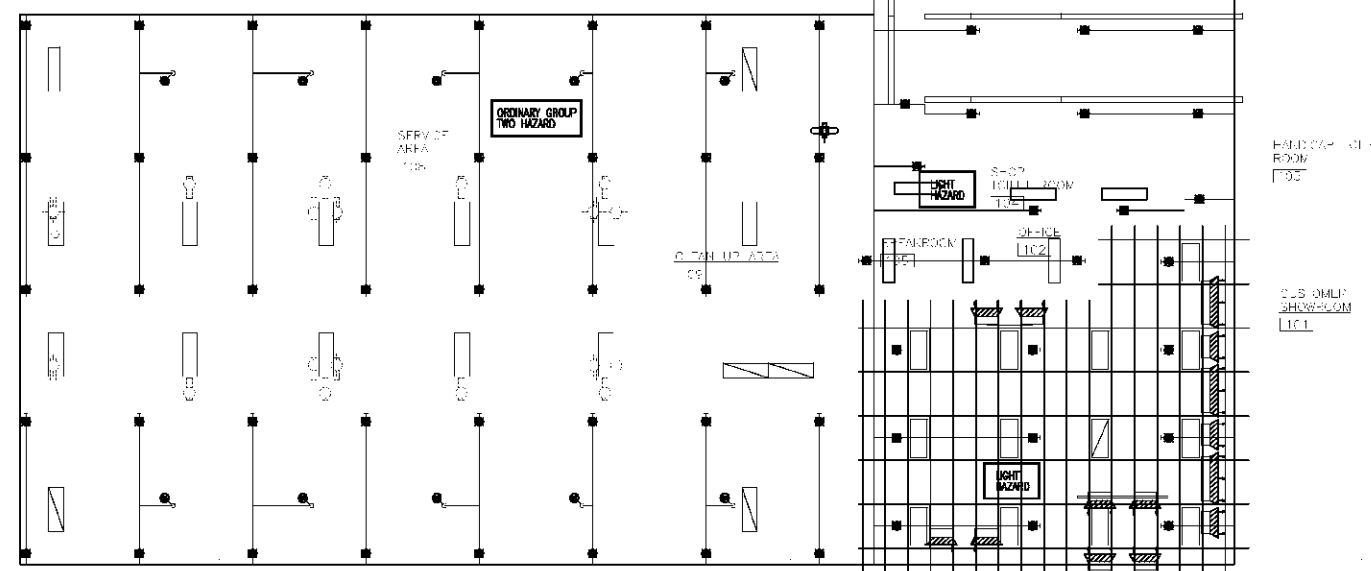
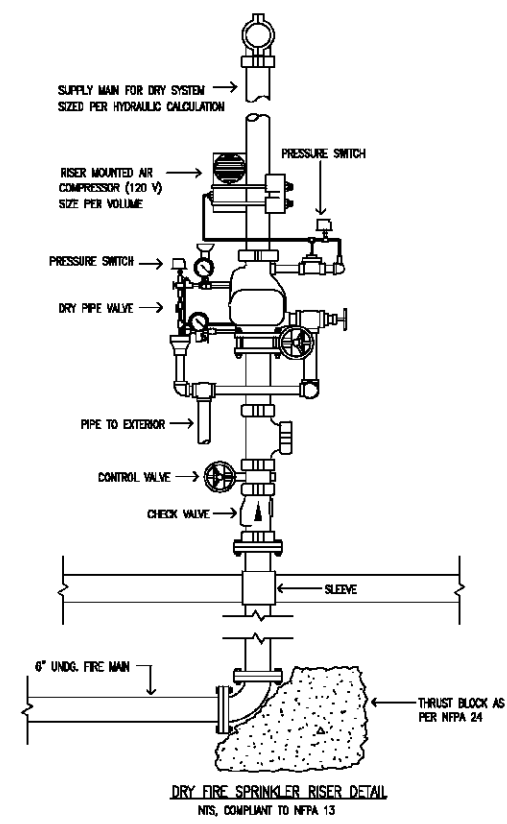
- THE FIRE SPRINKLER CONTRACTOR SHALL PROVIDE COMPLETE FIRE PROTECTION SYSTEM LAYOUT DOCUMENTS THOROUGHLY COORDINATED WITH THE CONSTRUCTION DOCUMENTS AND THE OTHER TRADES. ALL LAYOUT WORK SHALL BE IN ACCORDANCE WITH THE FOLLOWING:
1. NATIONAL FIRE PROTECTION ASSOCIATION (NFPA) PAMPHLET NO. 13.
  2. NATIONAL FIRE PROTECTION ASSOCIATION (NFPA) PAMPHLET NO. 24.
  3. NATIONAL FIRE PROTECTION ASSOCIATION (NFPA) PAMPHLET NO. 230.
  4. UNIFIED FACILITIES CRITERIA UFC 3-600-01
  5. THE FIRE SPRINKLER CONTRACTOR SHALL SUBMIT TO THE ENGINEER OF RECORD TWO SETS OF THE FIRE SPRINKLER LAYOUT DRAWINGS, PRODUCT SUBMITTAL AND HYDRAULIC CALCULATIONS FOR REVIEW. THE FIRE SPRINKLER LAYOUT DRAWINGS AND CALCULATIONS SHALL REQUIRE THE OVERSIGHT AND SEAL OF AN REGISTERED PROFESSIONAL ENGINEER AS A CONTRACTUAL REQUIREMENT. NO INSTALLATION SHALL PROCEED WITHOUT PRIOR APPROVAL OF THE ABOVE REFERENCED.
  6. THE FIRE SPRINKLER CONTRACTOR SHALL SUBMIT THE REQUIRED FIRE PROTECTION SYSTEM LAYOUT DOCUMENTS TO THE LOCAL AUTHORITY HAVING JURISDICTION FOR APPROVAL AND PERMITTING. THE FIRE PROTECTION SYSTEM LAYOUT DOCUMENTS SHALL REQUIRE THE OVERSIGHT AND SEAL OF AN REGISTERED PROFESSIONAL ENGINEER AS A CONTRACTUAL REQUIREMENT. NO INSTALLATION SHALL PROCEED WITHOUT PRIOR APPROVAL OF THE ABOVE REFERENCED.
  7. THE PRIVATE FIRE SERVICE MAIN SHALL BE INSTALLED BY A CERTIFIED FIRE SPRINKLER CONTRACTOR. THIS CONTRACTOR'S WORK SHALL BEGIN AT THE POINT OF CONNECTION WHERE THE UNDERGROUND IS SOLELY DEDICATED FOR THE FIRE PROTECTION SYSTEM.
  8. THE FIRE SPRINKLER CONTRACTOR SHALL BE RESPONSIBLE FOR CONDUCTING A CURRENT FIRE FLOW TEST. THE FIRE FLOW TEST SHALL BE WITNESSED AND APPROVED BY THE LOCAL FIRE INSPECTOR.

**DESIGN APPROACH DATA**

- SYSTEM(a) TYPE: DRY PIPE  
 REMOTE AREA: AS PER UFC 3-600-01 AND NFPA 13  
 LIGHT HAZARD DENSITY: 0.10 GPM/ sq. ft.  
 LIGHT HAZARD SPACING: AS PER NFPA 13
- SYSTEM(b) TYPE: DRY PIPE  
 REMOTE AREA: AS PER UFC 3-600-01 AND NFPA 13  
 ORDINARY GROUP ONE HAZARD DENSITY: 0.15 GPM/ sq. ft.  
 ORDINARY HAZARD SPACING: AS PER NFPA 13
- SYSTEM(c) TYPE: DRY PIPE  
 REMOTE AREA: AS PER UFC 3-600-01 AND NFPA 13  
 ORDINARY GROUP TWO HAZARD DENSITY: 0.20 GPM/ sq. ft.  
 ORDINARY HAZARD SPACING: AS PER NFPA 13

**SYMBOL LEGEND**

- ⊙ STANDARD RESPONSE BRASS UPRIGHT HEAD 212'
- ⊙ STANDARD RESPONSE INTERMEDIATE BRASS UPRIGHT HEAD 185' INSTALLED TO PROTECT UNDER ROLL UP DOOR
- ⊙ QUICK RESPONSE RECESSED DRY PENDENT HEAD WHITE POLYESTER FINISH 155' OR AS NOTED



**FIRE PROTECTION FLOOR PLAN**

Xref Z:\CAD\Robert Walker\0423 Ft. Jackson\X-plan.dwg

DRAWING NO.	0423
DATE	
DESIGNED BY	
CHECKED BY	
APPROVED BY	
PROJECT NO.	
DATE	

**RE-F**  
 ARMY & AIR FORCE EXCHANGE SERVICE  
 DEPARTMENTS OF THE ARMY & AIR FORCE

PROJECT:  
**FIRESTONE CAR CARE CENTER**

DATE: 01.04.05  
 SCALE: NOTED  
 SHEET: **FP1.0**  
 DRAWING NUMBER: 0832-01-000005