

REV. 0, 04/25/06		
VOL. 1, SHEET 06 OF 06		
PROJECT: FT. JACKSON, SC		
DRAWING: LIGHTING & OVERHEAD POWER PLAN		
DATE	BY	CHK
06/28/07	0632-03-00012	E1
06/28/07	0632-03-00012	E1

DESIGNED BY	DATE
0632	04/23
CHECKED BY	DATE
DATE	DATE
DATE	DATE

PROJECT	0423
DESCRIPTION	DATE
DATE	DATE
DATE	DATE

**RE-F**  
 ARMY & AIR FORCE EXCHANGE SERVICE  
 DEPARTMENTS OF THE ARMY & AIR FORCE

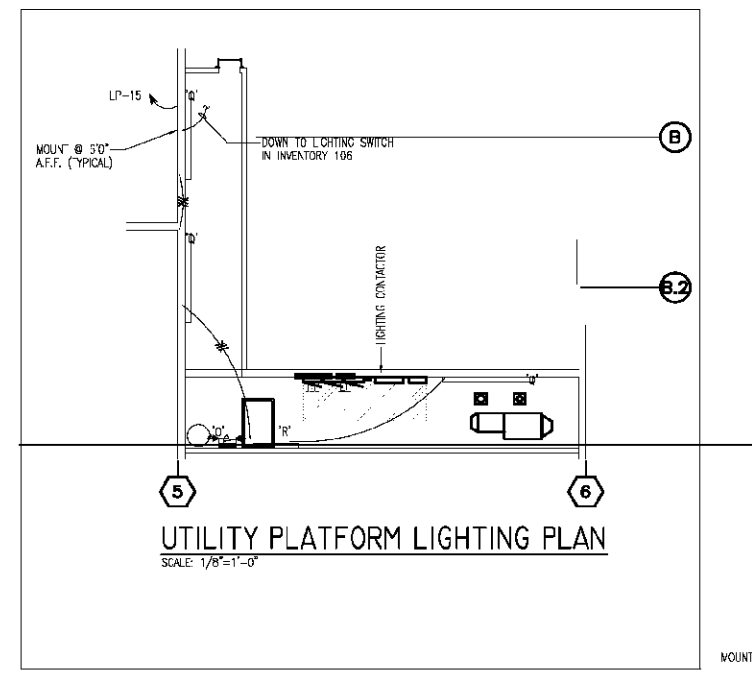
PROJECT: FT. JACKSON, SC  
**LIGHTING & OVERHEAD POWER PLAN**  
 DATE: 06.28.07  
 SCALE: NOTED  
 SHEET: E1  
 DRAWING PROJECT NO: 0632-03-00012

120/208 VOLT, 3 PH, 4 W  
 200 AMP MAIN BREAKER

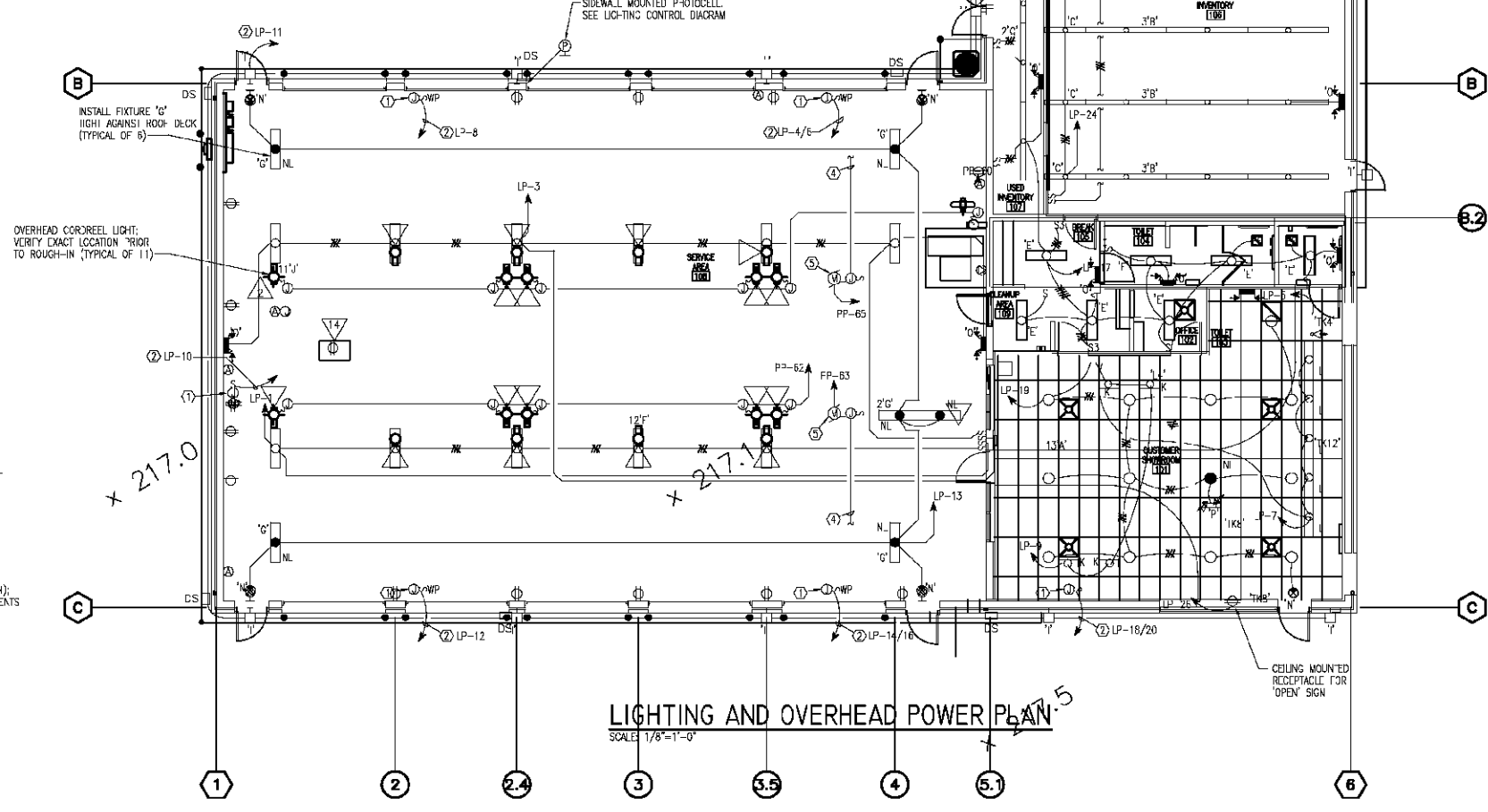
**CIRCUIT BREAKER PANEL SCHEDULE**  
**PANEL LP**

CIR	LOAD DESCRIPTION	CIRCUIT		BREAKER		LOAD DESCRIPTION	CIR
		NO.	AMP	AMP	POLE		
1	LTC-SERVICE AREA	20	100	15	20	1	2
2	LTC-SERVICE AREA	20	100	15	20	1	4
3	BA-2-CURVE 2-085M	1	10	15	20	1	5
4	BA-2-CURVE 2-085M	1	10	15	20	1	6
5	BA-2-CURVE 2-085M	1	10	15	20	1	10
6	BA-2-CURVE 2-085M	1	10	15	20	1	11
7	LTC-EXTREMIT	2	20	15	20	1	12
8	LTC-EXTREMIT	2	20	15	20	1	13
9	LTC-EXTREMIT	2	20	15	20	1	14
10	LTC-EXTREMIT	2	20	15	20	1	15
11	LTC-EXTREMIT	2	20	15	20	1	16
12	LTC-EXTREMIT	2	20	15	20	1	17
13	LTC-EXTREMIT	2	20	15	20	1	18
14	LTC-EXTREMIT	2	20	15	20	1	19
15	LTC-EXTREMIT	2	20	15	20	1	20
16	LTC-EXTREMIT	2	20	15	20	1	21
17	LTC-EXTREMIT	2	20	15	20	1	22
18	LTC-EXTREMIT	2	20	15	20	1	23
19	LTC-EXTREMIT	2	20	15	20	1	24
20	LTC-EXTREMIT	2	20	15	20	1	25
21	LTC-EXTREMIT	2	20	15	20	1	26
22	LTC-EXTREMIT	2	20	15	20	1	27
23	LTC-EXTREMIT	2	20	15	20	1	28
24	LTC-EXTREMIT	2	20	15	20	1	29
25	LTC-EXTREMIT	2	20	15	20	1	30
26	LTC-EXTREMIT	2	20	15	20	1	31
27	LTC-EXTREMIT	2	20	15	20	1	32
28	LTC-EXTREMIT	2	20	15	20	1	33
29	LTC-EXTREMIT	2	20	15	20	1	34
30	LTC-EXTREMIT	2	20	15	20	1	35
31	LTC-EXTREMIT	2	20	15	20	1	36
32	LTC-EXTREMIT	2	20	15	20	1	37
33	LTC-EXTREMIT	2	20	15	20	1	38
34	LTC-EXTREMIT	2	20	15	20	1	39
35	LTC-EXTREMIT	2	20	15	20	1	40
36	LTC-EXTREMIT	2	20	15	20	1	41
37	LTC-EXTREMIT	2	20	15	20	1	42
38	LTC-EXTREMIT	2	20	15	20	1	43
39	LTC-EXTREMIT	2	20	15	20	1	44
40	LTC-EXTREMIT	2	20	15	20	1	45

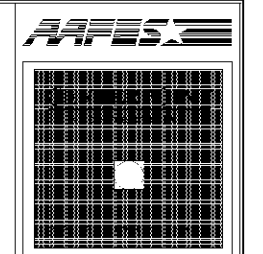
DATE: 06/28/07  
 DRAWN BY: 0632-03-00012  
 CHECKED BY: 0632-03-00012



**GENERAL NOTE:**  
 PRIOR TO ROUGH-IN, ELECTRICAL CONTRACTOR TO COORDINATE ALL SWITCHING ARRANGEMENTS WITH ARCHITECT/OWNER.



- KEY NOTES:**
- ① JUNCTION BOX FOR "MASTERCARE CAR SERVICE" INTERNALLY ILLUMINATED SIGN. VERIFY LOCATION WITH SIGN CONTRACTOR PRIOR TO ROUGH-IN.
  - ② ROUTE CIRCUIT THROUGH LIGHTING CONTRACTOR; SEE LIGHTING CONTROL DIAGRAM.
  - ③ JUNCTION BOX FOR "RESTONE" SIGN. VERIFY SIGN LOCATION WITH SIGN CONTRACTOR PRIOR TO ROUGH-IN.
  - ④ TO LIMIT SWITCH AND DOOR CONTROLLER (SEE POWER PLAN FOR CONTINUATION); INSTALL 3/4" CONDUIT WITH CONTROL WIRING PER MANUFACTURER'S REQUIREMENTS.
  - ⑤ OVERHEAD DOOR MOTOR 1/2HP, 120V. COORDINATE EXACT LOCATION WITH DOOR MOTOR INSTALLER PRIOR TO ROUGH-IN.
  - ⑥ OVERHEAD CONDUIT LIGHT.

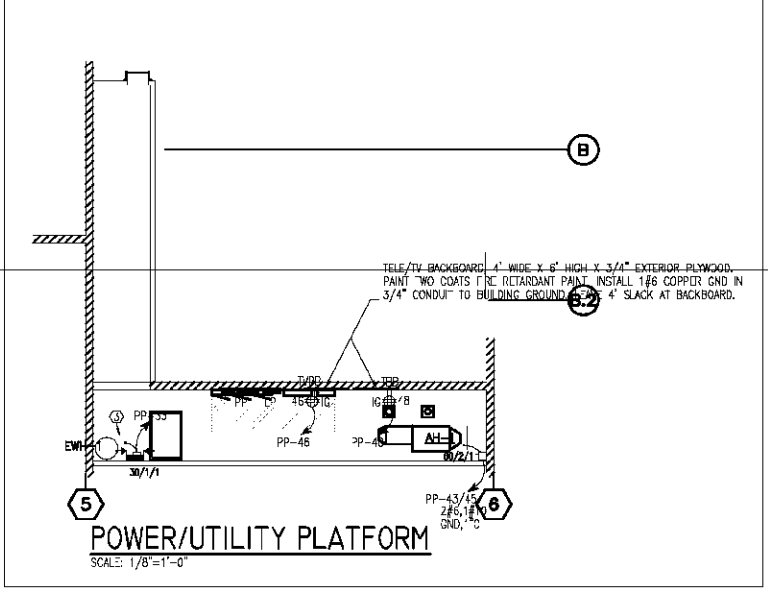


### CIRCUIT BREAKER PANEL SCHEDULE

PANEL PP

NO.	LOAD DESCRIPTION	BREAKER RATING	BREAKER TYPE	LOAD DESCRIPTION	NO.
1	DRIVE MOTOR	100	1	DRIVE MOTOR	1
2	DRIVE MOTOR	100	1	DRIVE MOTOR	2
3	DRIVE MOTOR	100	1	DRIVE MOTOR	3
4	DRIVE MOTOR	100	1	DRIVE MOTOR	4
5	DRIVE MOTOR	100	1	DRIVE MOTOR	5
6	DRIVE MOTOR	100	1	DRIVE MOTOR	6
7	DRIVE MOTOR	100	1	DRIVE MOTOR	7
8	DRIVE MOTOR	100	1	DRIVE MOTOR	8
9	DRIVE MOTOR	100	1	DRIVE MOTOR	9
10	DRIVE MOTOR	100	1	DRIVE MOTOR	10
11	DRIVE MOTOR	100	1	DRIVE MOTOR	11
12	DRIVE MOTOR	100	1	DRIVE MOTOR	12
13	DRIVE MOTOR	100	1	DRIVE MOTOR	13
14	DRIVE MOTOR	100	1	DRIVE MOTOR	14
15	DRIVE MOTOR	100	1	DRIVE MOTOR	15
16	DRIVE MOTOR	100	1	DRIVE MOTOR	16
17	DRIVE MOTOR	100	1	DRIVE MOTOR	17
18	DRIVE MOTOR	100	1	DRIVE MOTOR	18
19	DRIVE MOTOR	100	1	DRIVE MOTOR	19
20	DRIVE MOTOR	100	1	DRIVE MOTOR	20
21	DRIVE MOTOR	100	1	DRIVE MOTOR	21
22	DRIVE MOTOR	100	1	DRIVE MOTOR	22
23	DRIVE MOTOR	100	1	DRIVE MOTOR	23
24	DRIVE MOTOR	100	1	DRIVE MOTOR	24
25	DRIVE MOTOR	100	1	DRIVE MOTOR	25
26	DRIVE MOTOR	100	1	DRIVE MOTOR	26
27	DRIVE MOTOR	100	1	DRIVE MOTOR	27
28	DRIVE MOTOR	100	1	DRIVE MOTOR	28
29	DRIVE MOTOR	100	1	DRIVE MOTOR	29
30	DRIVE MOTOR	100	1	DRIVE MOTOR	30
31	DRIVE MOTOR	100	1	DRIVE MOTOR	31
32	DRIVE MOTOR	100	1	DRIVE MOTOR	32
33	DRIVE MOTOR	100	1	DRIVE MOTOR	33
34	DRIVE MOTOR	100	1	DRIVE MOTOR	34
35	DRIVE MOTOR	100	1	DRIVE MOTOR	35
36	DRIVE MOTOR	100	1	DRIVE MOTOR	36
37	DRIVE MOTOR	100	1	DRIVE MOTOR	37
38	DRIVE MOTOR	100	1	DRIVE MOTOR	38
39	DRIVE MOTOR	100	1	DRIVE MOTOR	39
40	DRIVE MOTOR	100	1	DRIVE MOTOR	40
41	DRIVE MOTOR	100	1	DRIVE MOTOR	41
42	DRIVE MOTOR	100	1	DRIVE MOTOR	42
43	DRIVE MOTOR	100	1	DRIVE MOTOR	43
44	DRIVE MOTOR	100	1	DRIVE MOTOR	44
45	DRIVE MOTOR	100	1	DRIVE MOTOR	45
46	DRIVE MOTOR	100	1	DRIVE MOTOR	46
47	DRIVE MOTOR	100	1	DRIVE MOTOR	47
48	DRIVE MOTOR	100	1	DRIVE MOTOR	48
49	DRIVE MOTOR	100	1	DRIVE MOTOR	49
50	DRIVE MOTOR	100	1	DRIVE MOTOR	50
51	DRIVE MOTOR	100	1	DRIVE MOTOR	51
52	DRIVE MOTOR	100	1	DRIVE MOTOR	52
53	DRIVE MOTOR	100	1	DRIVE MOTOR	53
54	DRIVE MOTOR	100	1	DRIVE MOTOR	54
55	DRIVE MOTOR	100	1	DRIVE MOTOR	55

NOTE: ELECTRICAL CONTRACTOR SHALL VERIFY ALL ELECTRICAL REQUIREMENTS FOR OWNER FURNISHED EQUIPMENT PRIOR TO INSTALLATION.



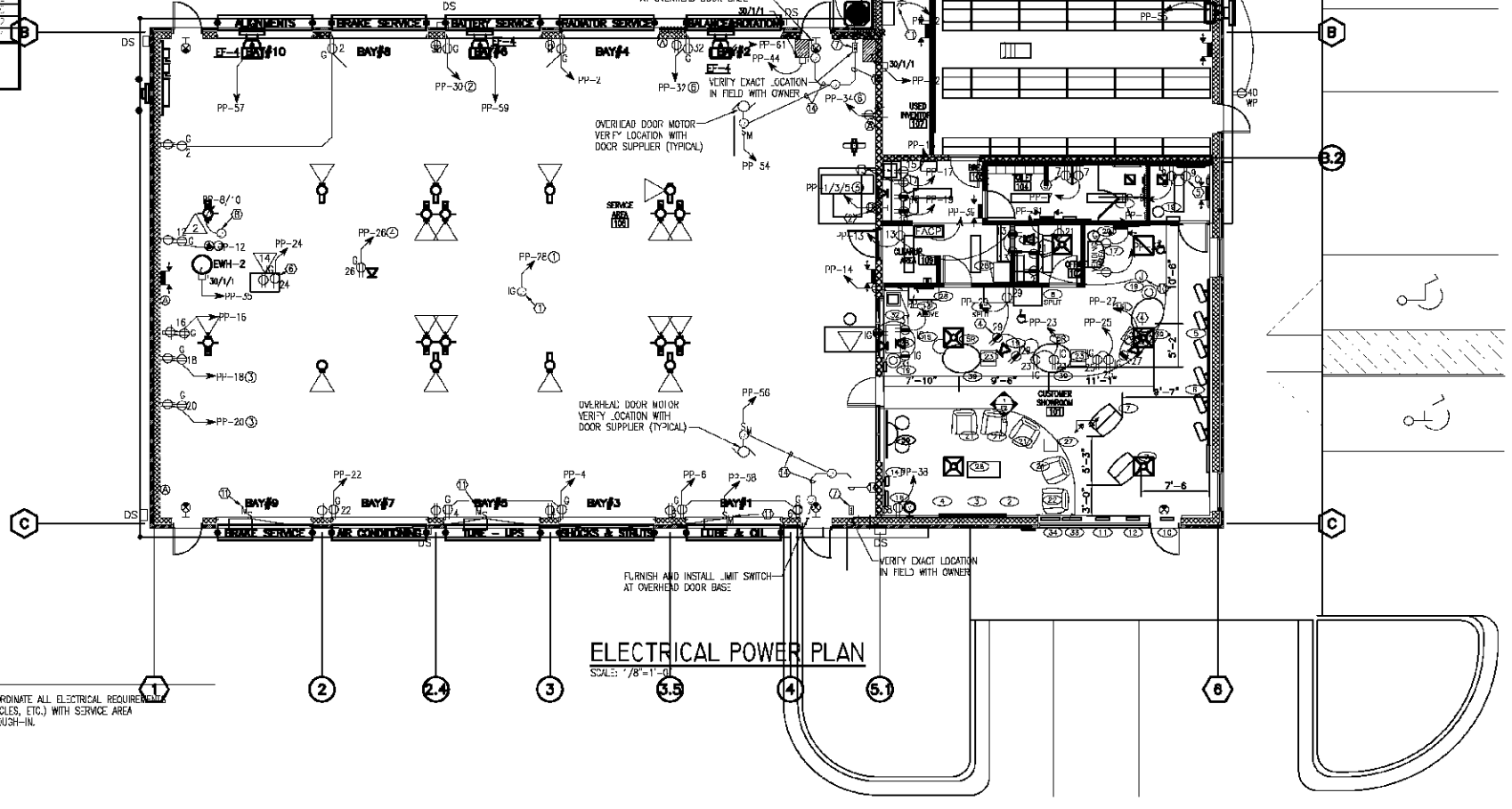
### SERVICE AREA EQUIPMENT SCHEDULE

ITEM NO.	EQUIPMENT DESCRIPTION/REQUIREMENTS	REMARKS
1	OVERHEAD HEAVY DUTY CORD (RTI)	VERIFY CONNECTION WITH ACTUAL EQUIPMENT USED AND NEW CONFIGURATION RECEPTACLE AS REQUIRED.
2	BATTERY CHARGER	
3	ARMED BRAKE SHOP	
4	ELECTRONIC SYSTEM TESTER	
5	ELECTRONIC WHEEL BALANCER	
6	ELECTRONIC TIRE CHANGER	PROVIDE RECEPTACLE TO MATCH NEMA L15-20 PLUG

NOTE: ELECTRICAL CONTRACTOR SHALL VERIFY ALL ELECTRICAL REQUIREMENTS FOR OWNER FURNISHED EQUIPMENT PRIOR TO INSTALLATION.

- #### KEY NOTES:
- HEAVY DUTY CORD REEL - MOUNT TO ROOF STRUCTURE AT LOCATION SHOWN. INSTALL TO AVOID CONFLICT WITH OTHER EQUIPMENT. PROVIDE ISOLATED GROUND.
  - PROVIDE 20A, 208V, 3Ø, 4W RECEPTACLE @ 3'-0" A.F.F. FOR SPIN BALANCER. VERIFY RECEPTACLE CONFIGURATION WITH PLUG PROVIDED WITH EQUIPMENT.
  - ELECTRIC WATER HEATER - 1.5KW, 120V, 1Ø
  - COORDINATE LOCATIONS AND CONDUIT ROUTING IN CONJUNCTION WITH ARCHITECT PRIOR TO INSTALLATION.
  - DUPLEX RECEPTACLE FOR ELECTRONIC TESTERS (TYP). MOUNT ADJACENT TO SINK @ 24" A.F.F. UNLESS OTHERWISE NOTED.
  - POWER DROP ALIGNMENT COMPUTER. PROVIDE OUTLET AT END OF DROP CORD, WITH BOTTOM OF COUTLET @ 6'-0" A.F.F.
  - PUSH BUTTON STATION - UP-STOP-DOWN WITH PILOT LIGHTS FURNISHED BY OTHERS, WELDED AND WIRED BY ELECTRICAL CONTRACTOR. MOUNT AT 48" A.F.F.
  - ALIGNMENT RACK - 10A, 208V, 1 PHASE. MAKE FINAL CONNECTION TO RACK AFTER RACK IS INSTALLED IN PLACE.
  - RECEPTACLE FOR AIR COMPRESSOR ON FIRE RISER PIPE. VERIFY LOCATION IN FIELD PRIOR TO ROUGH-IN.
  - JUNCTION BOX FOR AUTOMATIC DAMPER. VERIFY LOCATION IN FIELD PRIOR TO ROUGH-IN.
  - MOTOR RATED TOGGLE SWITCH DISCONNECT FOR MOTORIZED LOUVER. VERIFY EXACT LOCATION IN FIELD.
  - VERIFY EXACT TYPE OF RECEPTACLE REQUIRED WITH EQUIPMENT FURNISHED PRIOR TO INSTALLATION.
  - VERIFY EXACT LOCATION OF DEVICE PRIOR TO ROUGH-IN.
  - INSTALL 3/4" CONDUIT WITH CONTROL WIRING PER MANUFACTURER'S REQUIREMENTS.

- #### GENERAL NOTES:
- ELECTRICAL CONTRACTOR SHALL COORDINATE ALL ELECTRICAL REQUIREMENTS (LOCATIONS, CONNECTIONS, RECEPTABLES, ETC.) WITH SERVICE AREA EQUIPMENT FURNISHED PRIOR TO ROUGH-IN.



217

DATE	DESCRIPTION	BY
06/28/07	NOTED	E2

NO.	REVISION	DATE
1	ISSUED FOR CONSTRUCTION	06/28/07

DESIGNED BY	DATE
CHECKED BY	DATE
APPROVED BY	DATE

**RE-F**

ARMY & AIR FORCE EXCHANGE SERVICE  
DEPARTMENTS OF THE ARMY & AIR FORCE

FIRESTONE CAR CARE CENTER

FT. JACKSON, SC

**ELECTRICAL POWER PLAN**

DATE	REVISION	BY
06/28/07	NOTED	E2
0632-03-000012		OF

**ELECTRICAL LEGEND**

- CEILING OUTLETS**
- RECESSED 2' x 4' FLUORESCENT FIXTURE MARK "A"
  - RECESSED 2' x 4' FLUORESCENT FIXTURE MARK "A" WITH EMERGENCY BALLAST
  - SURFACE MOUNTED, RECESSED OR SUSPENDED FLUORESCENT FIXTURE MARK "A" AS NOTED
  - SURFACE MOUNTED TRACK LIGHTING AND NUMBER OF FIXTURES TO BE COORDINATED IN FIELD WITH ARCHITECT/OWNER
  - JUNCTION BOX
  - EXHAUST FAN
- WALL OUTLETS**
- DUPLEX RECEPTACLE - 20 AMP, 125 VOLT, 2 POLE, 3 WIRE GROUNDED TYPE, NEMA 5-20R MOUNT 18" A.F.F. UNLESS NOTED OTHERWISE
  - DUPLEX RECEPTACLE - 20 AMP, 125 VOLT, GFI, 2 POLE, 3 WIRE GROUNDED TYPE, NEMA 5-20R MOUNT 18" A.F.F. UNLESS NOTED OTHERWISE
  - DUPLEX RECEPTACLE - 20 AMP, 125 VOLT, 2 POLE, 3 WIRE GROUNDED TYPE W/ ISOLATED GND, NEMA 5-20R MOUNT 18" A.F.F. UNLESS NOTED OTHERWISE
  - DUPLEX RECEPTACLE - 20 AMP, 125 VOLT, GFI, 2 POLE, 3 WIRE GROUNDED TYPE, NEMA 5-20R MOUNT 18" A.F.F. UNLESS NOTED OTHERWISE
  - DUPLEX RECEPTACLE - 20 AMP, 125 VOLT, GFI, 2 POLE, 3 WIRE GROUNDED TYPE, NEMA 5-20R MOUNT 18" A.F.F. UNLESS NOTED OTHERWISE; PROVIDE WEATHERPROOF BOX FOR RECEPTACLE
  - DUPLEX RECEPTACLE - 20 AMP, 125 VOLT, GFI, 3 POLE, 3 WIRE GROUNDED TYPE, NEMA 5-20R MOUNT 26" AFF TO C/L FOR DRINKING FOUNTAIN
  - JUNCTION BOX WITH BLANK SCREW COVER
  - WALL MOUNTED EXIT LIGHT
  - WALL MOUNTED LIGHTING FIXTURE
  - PHOTOCELL; TORK MODEL 2101 (120V)
  - WALL MOUNTED EMERGENCY BATTERY PACK
- WALL SWITCHES (UNLESS OTHERWISE NOTED, MOUNT 48" A.F.F.)**
- A.C. TYPE, SINGLE POLE, 20 AMP, 120/277 VOLT
  - A.C. TYPE, 3-WAY, 20 AMP, 120/277 VOLT
- BRANCH CIRCUITING**
- RUN CONCEALED UNDER FLOOR OR IN GRADE
  - RUN CONCEALED IN CEILING OR WALLS
  - HOMERUN TO PANEL. ANY CIRCUIT WITHOUT FURTHER IDENTIFICATION INDICATES 2 #12, 1 #12 GROUND - 1/2" C; 3 #12, 1 #12 GROUND - 1/2" C; 4 #12, 1 #12 GROUND - 1/2" C. ETC. AS PER NEC. LETTERS AND NUMERALS INDICATE PANEL AND CIRCUIT NUMBER.
  - LIQUID-TIGHT FLEXIBLE CONDUIT CONNECTION
  - SURFACE MOUNTED CONDUIT; RUN PARALLEL OR PERPENDICULAR TO BUILDING LINES

**COMMUNICATIONS & SECURITY SYSTEM**

- WALL OUTLET - 4-1/2" SQ X 3-1/2" DEEP BOX; INSTALL 3/4" CONDUIT ABOVE ACCESSIBLE CEILING; INSTALL PULL RIBBON; PROVIDE RJ-45 COVERPLATE; MOUNT 18" A.F.F. U.N.O.
- TELEPHONE BACKBOARD - 4' X 6' X 3/4" EXTERIOR GRADE PLYWOOD WITH TWO COATS OF FIRE RETARDANT PAINT. INSTALL NO. 8 GROUND TO SERVICE GROUND AND COIL 19" AT BACKBOARD.
- TELEVISION SYSTEM
- TELEPHONE BACKBOARD - 4' X 6' X 3/4" EXTERIOR GRADE PLYWOOD WITH TWO COATS OF FIRE RETARDANT PAINT. INSTALL NO. 8 GROUND TO SERVICE GROUND AND COIL 19" AT BACKBOARD.
- TELEVISION CABLE WALL OUTLET WITH COAXIAL COVERPLATE ONLY; MOUNT 18" AFF TO C/L FOR TYPICAL UNITS; SEE COMMUNICATIONS SYSTEM RISER DIAGRAM
- PANELS AND POWER
- 120/208 VOLT PANELBOARD
- NON-FUSIBLE DISCONNECT SWITCH; XX/YY/ZZ WHERE X INDICATES AMPERAGE, Y INDICATES # OF POLES, AND Z INDICATES NEMA RATING
- FIRE ALARM SYSTEM**
- FIRE ALARM SYSTEM MANUAL PULL STATION; MOUNT 48" AFF TO C/L
- FIRE ALARM SYSTEM SIGNAL HORN/STROBE; MOUNT 80" AFF TO C/L
- WEATHERPROOF FIRE ALARM SYSTEM SIGNAL HORN; MOUNT 80" AFF TO BOTTOM
- FIRE ALARM SYSTEM STROBE; MOUNT 80" AFF TO C/L
- FIRE ALARM SYSTEM AUTOMATIC HEAT DETECTOR; 135 DEGREE/RATE OF RISE TYPE; CEILING MOUNTED
- FIRE ALARM SYSTEM RACEWAY INSTALLED CONCEALED; ARROW INDICATES HOMERUN TO FIRE ALARM CONTROL PANEL
- FIRE ALARM SYSTEM TAMPER SWITCH
- FIRE ALARM SYSTEM FLOW SWITCH
- FIRE ALARM SYSTEM PRESSURE SWITCH

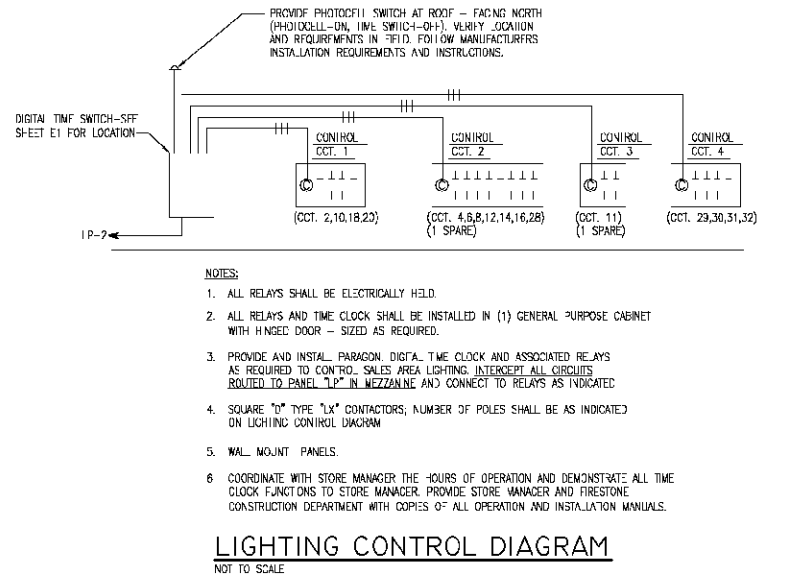
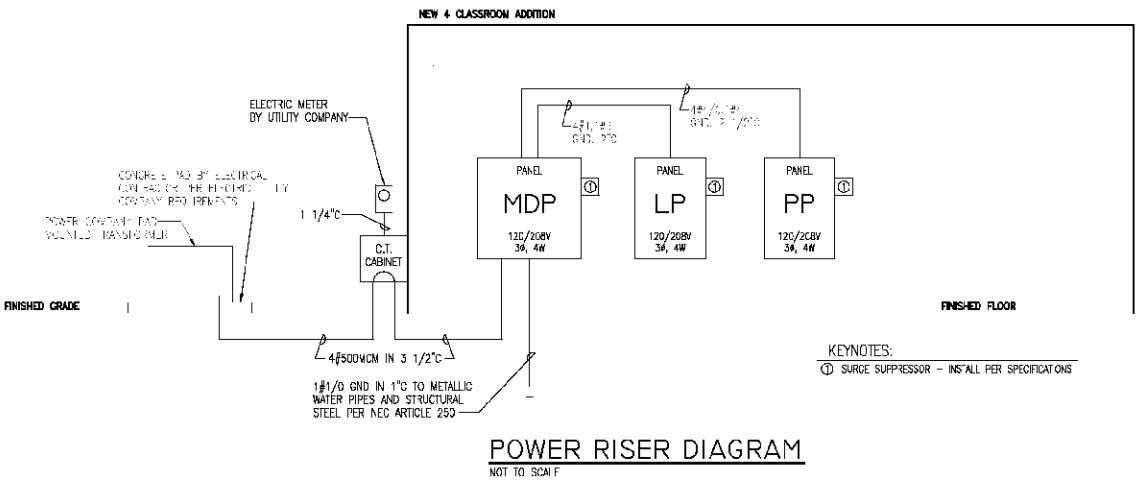
- MISCELLANEOUS**
- A.T.T. ABOVE FINISH FLOOR
  - WP WEATHERPROOF
  - U.N.O. UNLESS NOTED OTHERWISE

**ELECTRICAL GENERAL NOTES**

- CONTRACTOR SHALL COORDINATE ALL WORK WITH OTHER TRADES PRIOR TO INSTALLATION. REFER TO MECHANICAL AND PLUMBING DRAWINGS FOR EXACT SIZE AND LOCATION OF EQUIPMENT WHICH IS FURNISHED BY OTHERS AND CONNECTED BY ELECTRICAL.
- RECEPTACLES, SWITCHES AND COVERPLATES COLOR SHALL BE JOD STAINLESS STEEL; VERIFY WITH THE ARCHITECT PRIOR TO ORDERING.
- LOCATION OF LIGHTING FIXTURES, DISCONNECT SWITCHES, ETC. FOR MECHANICAL EQUIPMENT/ROOM SHALL BE COORDINATED WITH FINAL MECHANICAL EQUIPMENT LOCATION TO PROVIDE NATIONAL ELECTRIC CODE REQUIRED ACCESS SPACE.
- FINAL CONNECTION TO ALL MOTORS SHALL BE WITH FLEXIBLE CONDUIT CONNECTION.
- ALL EXIT AND EMERGENCY FIXTURES SHALL BE CONNECTED TO LIGHT CIRCUIT AHEAD OF LOCAL SWITCH.
- ALL PANELBOARDS, BACKBOARDS, TERMINAL CABINETS, ETC SHALL HAVE CUSTOM ENGRAVED MICA "A" NAMEPLATE; MECHANICALLY AFFIXED IDENTIFYING SYSTEM.
- GENERAL CONTRACTOR SHALL FIELD-VERIFY ALL EXISTING CONDITIONS PRIOR TO BEGINNING ANY WORK, AND SHALL IMMEDIATELY NOTIFY THE ARCHITECT OF ANY DISCREPANCIES. FAILURE TO DO SO INDICATES THAT THE CONTRACTOR ACCEPTS THE CONDITIONS AS THEY EXIST, AND SHALL PERFORM THE WORK REQUIRED AS SHOWN AND SPECIFIED.
- THE ELECTRICAL CONTRACTOR SHALL OBTAIN AND REVIEW THE MECHANICAL AND SPECIAL EQUIPMENT SUBMITTALS PRIOR TO SUBMITTING THE ELECTRICAL SUBMITTALS. ANY ELECTRICAL EQUIPMENT, CONDUIT, AND WIRE SIZE CHANGES RESULTING FROM THIS REVIEW SHALL ALSO BE SUBMITTED FOR APPROVAL.
- FURNISH ALL EQUIPMENT AND LABOR, PERFORM ALL LABOR WITH SUPERVISION, BEAR ALL EXPENSES, AS NECESSARY FOR THE SATISFACTORY COMPLETION OF ALL WORK READY FOR OPERATION.
- COMPLY WITH ALL LOCAL CODE, LAWS, AND ORDINANCES APPLICABLE TO ELECTRICAL WORK, THE STATE BUILDING CODE AND THE NATIONAL ELECTRIC CODE. OBTAIN ALL PERMITS REQUIRED BY LOCAL ORDINANCES.
- OBTAIN ARCHITECTS APPROVAL OF ALL LIGHT FIXTURES, SWITCHES, RECEPTACLES, PANELBOARDS, ETC. PRIOR TO PURCHASING.
- THE GENERAL CONTRACTOR SHALL NOTIFY THE ARCHITECT IMMEDIATELY OF ANY CONFLICTS/DISCREPANCIES BETWEEN DISCIPLINES BEFORE ORDERING EQUIPMENT/MATERIALS.

**CIRCUIT BREAKER PANEL SCHEDULE**

CIR.	LOAD DESCRIPTION	BREAKER POLE	AMP	LOAD (KVA)	SPEAKER AMP	POLE	LOAD DESCRIPTION	EXPI
1	SWITCH	1	20	0.00	0	1	SWITCH	1
2	1	1	20	0.00	0	1	1	2
3	1	1	20	0.00	0	1	1	3
4	AIR COMPRESSOR (1/2 HP)	3	20	0.1	20	3	AIR COMPRESSOR (1/2 HP)	14
5	SPACE	1	20	0.00	0	1	SPACE	15
6	SPACE	1	20	0.00	0	1	SPACE	16
7	SPACE	1	20	0.00	0	1	SPACE	17
8	SPACE	1	20	0.00	0	1	SPACE	18
9	SPACE	1	20	0.00	0	1	SPACE	19
10	SPACE	1	20	0.00	0	1	SPACE	20
11	SPACE	1	20	0.00	0	1	SPACE	21
12	SPACE	1	20	0.00	0	1	SPACE	22
13	SPACE	1	20	0.00	0	1	SPACE	23
14	SPACE	1	20	0.00	0	1	SPACE	24
15	SPACE	1	20	0.00	0	1	SPACE	25
16	SPACE	1	20	0.00	0	1	SPACE	26
17	SPACE	1	20	0.00	0	1	SPACE	27
18	SPACE	1	20	0.00	0	1	SPACE	28
19	SPACE	1	20	0.00	0	1	SPACE	29
20	SPACE	1	20	0.00	0	1	SPACE	30
21	SPACE	1	20	0.00	0	1	SPACE	31
22	SPACE	1	20	0.00	0	1	SPACE	32
23	SPACE	1	20	0.00	0	1	SPACE	33
24	SPACE	1	20	0.00	0	1	SPACE	34
25	SPACE	1	20	0.00	0	1	SPACE	35
26	SPACE	1	20	0.00	0	1	SPACE	36
27	SPACE	1	20	0.00	0	1	SPACE	37
28	SPACE	1	20	0.00	0	1	SPACE	38
29	SPACE	1	20	0.00	0	1	SPACE	39
30	SPACE	1	20	0.00	0	1	SPACE	40
31	SPACE	1	20	0.00	0	1	SPACE	41
32	SPACE	1	20	0.00	0	1	SPACE	42
33	SPACE	1	20	0.00	0	1	SPACE	43
34	SPACE	1	20	0.00	0	1	SPACE	44
35	SPACE	1	20	0.00	0	1	SPACE	45
36	SPACE	1	20	0.00	0	1	SPACE	46
37	SPACE	1	20	0.00	0	1	SPACE	47
38	SPACE	1	20	0.00	0	1	SPACE	48
39	SPACE	1	20	0.00	0	1	SPACE	49
40	SPACE	1	20	0.00	0	1	SPACE	50



**LIGHTING FIXTURE SCHEDULE**

SYMBOL	MANUFACTURER & CATALOG NO.	MOUNTING	WATTAGE & LAMP	SHIELDING	RECESS-ED DEPTH	MISCELLANEOUS
A	COLUMBIA #4PS24-3326-FSA12-3EBBLHUNV	RECESSED	(3) F32T8/SP41/ECO	ACRYLIC PRISMATIC LENS	6"	
B	COLUMBIA #CS8-159-EBBLHUNV	SLR/FACE/PENDANT	(1) 50W T8	---	---	PROVIDE PENDANT LENGTH AS REQUIRED.
C	COLUMBIA #CS4-132-CDBLHUNV	SLR/FACE/PENDANT	(1) 32W T8	---	---	PROVIDE PENDANT-LENGTH AS REQUIRED.
D	NOT USED					
E	COLUMBIA #AMN4-232-CDBLHUNV	SLR/FACE	(2) F32T8/SP41/ECO	ACRYLIC PRISMATIC LENS	---	
F	COLUMBIA #LW4-632-CN-ST-3EBBLHUNV-LH43	PENDANT	(6) F32T8	WIRE GUARD	---	PROVIDE PENDANT-LENGTH AS REQUIRED.
G	COLUMBIA #K4-232-EBBLHUNV-LW4	SLR/FACE	(2) F32T8/SP41/ECO	WIRE GUARD	---	
H	ALITE #3-7CMH-(FINISH)	WALL	(1) 70 W MH (INCLUDED)	POLYCARBONATE LENS	---	COORDINATE EXACT MOUNTING HEIGHT WITH ARCHITECT.
I	KIM #MD1404/73MH120/BL-P	WALL	(1) 70 W MH	TEMPERED GLASS LENS	---	COORDINATE EXACT MOUNTING HEIGHT AND COLOR SELECTION WITH ARCHITECT.
J	FIRESTONE CORD REEL LIGHT FIXTURE PROVIDED BY OWNER, INSTALLED COMP FT/F BY INDIVIDUAL CONTRACTOR	WALL	75W INCAND. LAMPS	---	---	O.U. CORD REEL LIGHT.
K	COLUMBIA #FW-102-140TT-G-MA-EBT120-FWFK4	RECESSED CEILING	(1) 40W T5	---	---	
L	COLUMBIA #FW-104-140TT-G-MA-EBT120-FWFK4	RECESSED CEILING	(2) 40W T5	---	---	
M	NOT USED					
N	CORNERSTONE #GC1(2)RCW	WALL	12.6W LED	STENCIL FACE	---	REFER TO LIGHT FIXTURE SCHEDULE NOTE 7 & 8.
O	CORNERSTONE #LWP33-0612	WALL	2-9W PAR 36	SEALED BEAM	---	REFER TO LIGHT FIXTURE SCHEDULE NOTE 7 & 8.
P	LIGITALARMS #2TRC3/17563	RECESSED CEILING	2-2W HALOGEN	STAFFED BEAM	---	
Q	COLUMBIA #CS8-159-EBBLHUNV-CSWG4	SLR/FACE	(1) 50W T8	WIRE GUARD	---	
R	COLUMBIA #CS4-132-EBBLHUNV-CSWG4	SLR/FACE	(1) 32W T8	WIRE GUARD	---	
S	SPALDING #FFM H40 V4 F Q (FINISH) ARM POLE-SPALDING #SSA 25-60-AX-(FINISH)	POLE-MOUNTED @ 27'0"	(1) 400W MH	WIRE GUARD	---	25' POLE TO BE MOUNTED ON 2'6" CONCRETE BASE; SEE 'POLE BASE DETAIL'.
T	LUMINAIRE: PRESCOLITE #AKTROP30 TRACK: TK4-PRESCOLITE #AKT4WH/TK8-PRESCOLITE #AKT8WH/TK12-PRESCOLITE #AK12WH	TRACK-MOUNTED	(1) 75W PAR30	---	---	NUMBER FIXTURES FOR EACH TRACK TO BE COORDINATED W/ ARCHITECT/OWNER PRIOR TO ORDERING.

NOTE: ALL FLUORESCENT LAMPS SHALL BE BY GE LIGHTING COMPANY, OR APPROVED ALTERNATE.

- ALL LIGHTING FIXTURES SHALL BE RATED FOR BUILDING SYSTEM VOLTAGE. CONTRACTOR MUST VERIFY ALL LOCATIONS.
- UNLESS INDICATED OTHERWISE, ALL FLUORESCENT LIGHT FIXTURE BALLASTS SHALL BE ELECTRONIC CONTROL TYPE (E AS SHOWN ON SCHEDULE) AS MANUFACTURED BY MOTOROLA, ADVANCE OR MAGNETEK. FLUORESCENT LAMPS SHALL HAVE A 4-COLOR COLOR AND 75-COLOR RENDERING INDEX.
- ALL INCANDESCENT LAMPS SHALL BE RATED 130 VOLT A.C.
- ELECTRICAL CONTRACTOR SHALL CHECK AND COORDINATE ALL LIGHTING FIXTURE CATALOG NUMBERS WITH THE INTENT OF FIXTURE DESCRIPTIONS, LISTED ACCESSORIES AND TYPE OF INSTALLATION.
- ELECTRICAL CONTRACTOR SHALL PROVIDE EACH LIGHTING FIXTURE COMPLETE WITH PLASTER FRAMES AND ALL OTHER INSTALLATION AND HANGING HARDWARE AS REQUIRED FOR A COMPLETE AND FINISHED INSTALLATION AT EACH FIXTURE LOCATION.
- ALL FIXTURES SHALL BE "UL" LABELED. ALL LIGHTING FIXTURES EXPOSED TO WEATHER OR MOISTURE SHALL BEAR U.L. "WET LOCATION" LABEL, AND LIGHTING FIXTURES EXPOSED TO DAMPNESS SHALL BEAR U.L. "DAMP LOCATION" LABEL.
- ALL EXIT/DIRECTIONAL SIGNS SHALL BE INSTALLED COMPLETE WITH ALL INSTALLATION AND HANGING ACCESSORIES TO PROVIDE AN UNOBSTRUCTED VIEW OF EACH SIGN FACE AS REQUIRED. MOUNT SIGNS AT MAXIMUM +8'-0" IN HIGH CEILING AREA. SIGNS WILL BE ADJUSTED AS NECESSARY WITHOUT ADDITIONAL COST.
- SIGNS TO READ "EXIT". SIGNS WILL BE SINGLE OR DOUBLE FACE WITH OR WITHOUT DIRECTIONAL ARROWS. ALL AS SHOWN ON PLANS. SIGNS IN GENERAL WILL BE CEILING MOUNTED, LOCATED AND ADJUSTED FOR BEST VIEW. ALL EXIT SIGNS IN HIGH CEILING AREAS TO BE MOUNTED ON WALL AT MAXIMUM OF +8'-0" ABOVE FLOOR. NO PENDANTS WILL BE USED. SHADDED PORTION DENOTES ILLUMINATION FACE.
- REFER TO APPLICABLE SECTIONS OF THE SPECIFICATIONS FOR ADDITIONAL REQUIREMENTS FOR LIGHTING FIXTURES.
- VERIFY ALL LIGHTING FIXTURE LOCATIONS, FINISHES, VOLTAGE AND CEILING TYPES WITH ARCHITECT PRIOR TO INSTALLING.
- ALL EXIT SIGNS AND BATTERY EMERGENCY UNITS MUST BE APPROVED BY LOCAL CODE.
- ELECTRICAL CONTRACTOR TO FIELD ADJUST AMING PATTERN OF EXTERIOR LIGHTS AT NIGHT SESSION. OWNER & ARCHITECT TO DETERMINE TIME & DATE.
- ALL TRACK LIGHTING TO BE ON SEPARATE SWITCHES.

**AFES**

REVISED BY: A.L.I.  
DATE: 06/28/07  
DRAWING NO.: 0632-03-00012

NO.	REVISION	DATE
1	ISSUE FOR PERMIT	06/28/07
2	ISSUE FOR PERMIT	06/28/07
3	ISSUE FOR PERMIT	06/28/07

PROJECT: FIRESTONE CAR CARE CENTER

LOCATION: FT. JACKSON, SC

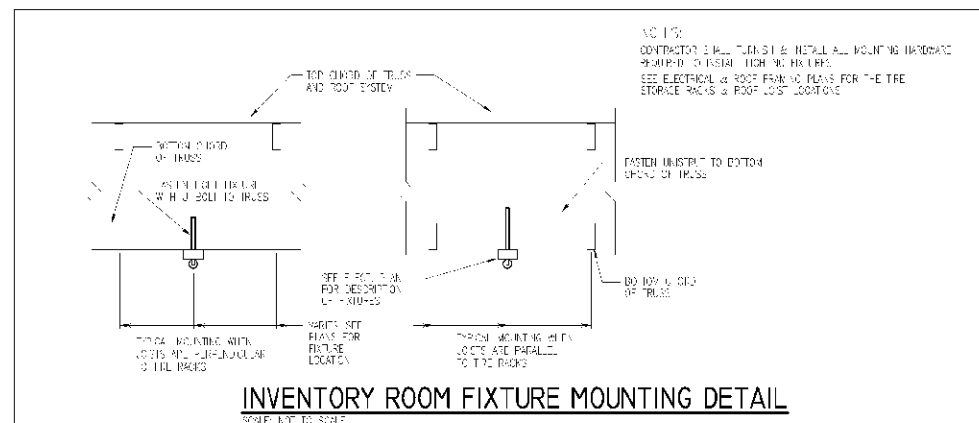
DATE: 06.28.07

NOTED: E3

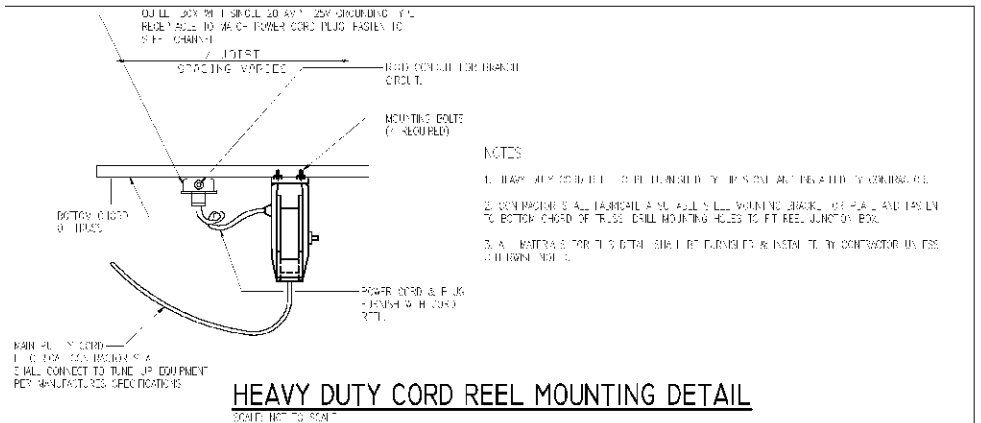
0632-03-00012

**GENERAL NOTES**

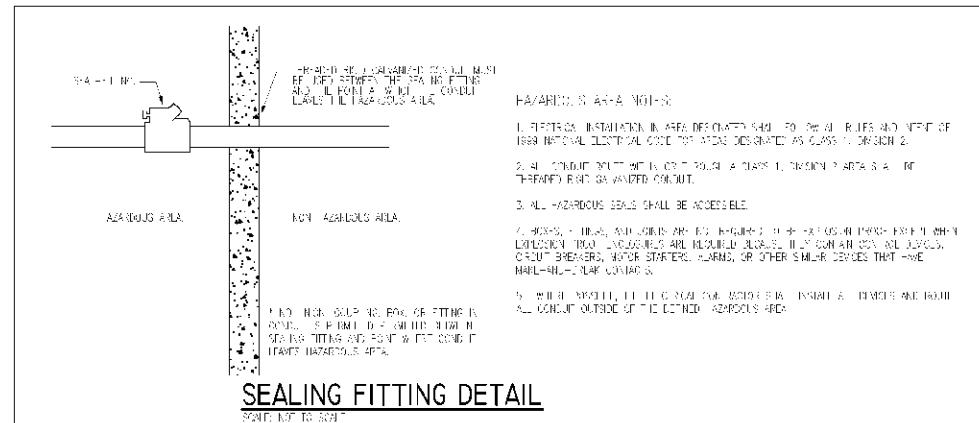
1. ALL FLOORING WORK SHALL BE INSTALLED IN ACCORDANCE WITH ALL APPLICABLE CODES HAVING JURISDICTION.
2. ALL CONDUIT SHALL BE INSTALLED IN ACCORDANCE WITH ALL APPLICABLE CODES HAVING JURISDICTION.
3. ALL CONDUIT SHALL BE INSTALLED IN ACCORDANCE WITH ALL APPLICABLE CODES HAVING JURISDICTION.
4. ALL CONDUIT SHALL BE INSTALLED IN ACCORDANCE WITH ALL APPLICABLE CODES HAVING JURISDICTION.
5. ALL CONDUIT SHALL BE INSTALLED IN ACCORDANCE WITH ALL APPLICABLE CODES HAVING JURISDICTION.
6. ALL CONDUIT SHALL BE INSTALLED IN ACCORDANCE WITH ALL APPLICABLE CODES HAVING JURISDICTION.
7. ALL CONDUIT SHALL BE INSTALLED IN ACCORDANCE WITH ALL APPLICABLE CODES HAVING JURISDICTION.
8. ALL CONDUIT SHALL BE INSTALLED IN ACCORDANCE WITH ALL APPLICABLE CODES HAVING JURISDICTION.



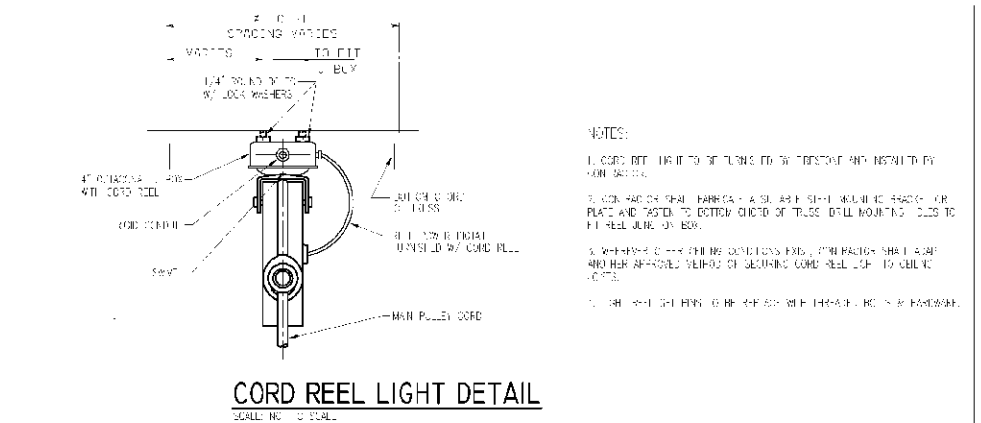
**INVENTORY ROOM FIXTURE MOUNTING DETAIL**  
SCALE: NOT TO SCALE



**HEAVY DUTY CORD REEL MOUNTING DETAIL**  
SCALE: NOT TO SCALE



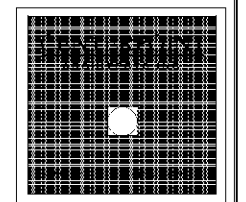
**SEALING FITTING DETAIL**  
SCALE: NOT TO SCALE



**CORD REEL LIGHT DETAIL**  
SCALE: NOT TO SCALE

**FIXTURE DETAILS**

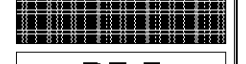
SCALE: NOT TO SCALE



DATE	06.28.07
BY	NOTED
PROJECT	0632-03-000012

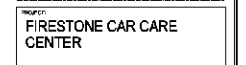
NO.	DESCRIPTION	DATE
1	ISSUED FOR CONSTRUCTION	06.28.07
2	ISSUED FOR CONSTRUCTION	06.28.07

DATE	06.28.07
BY	NOTED
PROJECT	0632-03-000012



**RE-F**

ARMY & AIR FORCE EXCHANGE SERVICE  
DEPARTMENTS OF THE ARMY & AIR FORCE



FIRESTONE CAR CARE CENTER

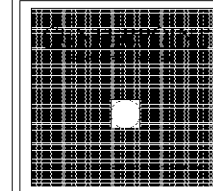
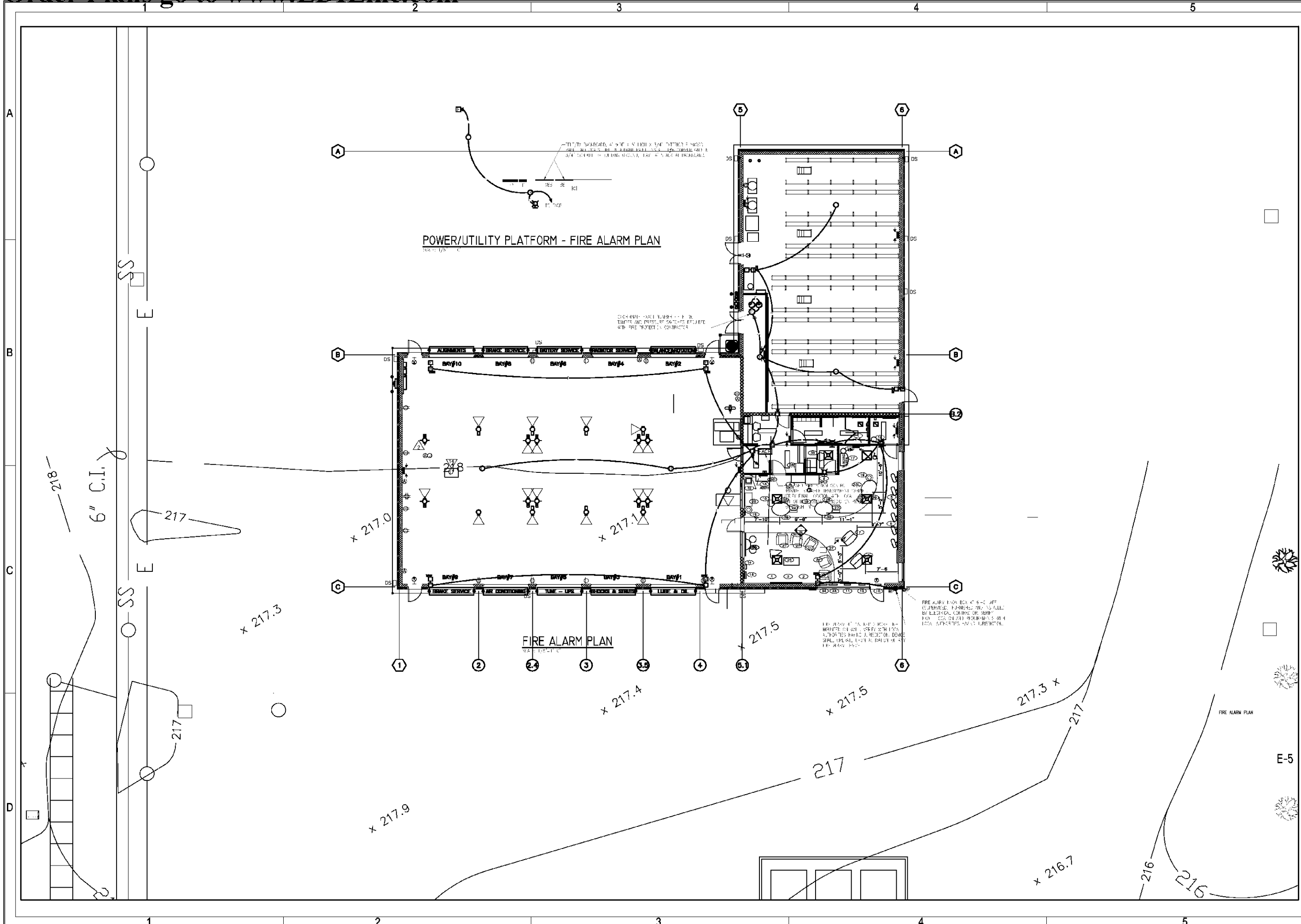
FT. JACKSON, SC

**FIXTURE DETAILS**

DATE	06.28.07
BY	NOTED
PROJECT	0632-03-000012

E-4





101 SUMNER AVENUE MIL. STATION, A. MILITARY STATION 201-101-101 TOWNSHIP, MISSISSIPPI		
DATE	DESIGNED BY	BY
08.28.07	W. HARRIS & SONS	PHD
CLIENT	OCUPATION	TYPE

REVISION	DATE
0423	

DATE	BY
06.28.07	NOTED
0632-03-000012	

**RE-F**

ARMY & AIR FORCE EXCHANGE SERVICE  
DEPARTMENTS OF THE ARMY & AIR FORCE

PROJECT  
**FIRESTONE CAR CARE CENTER**

FT. JACKSON, SC

DATE: 06.28.07    BY: NOTED    NO. 00

0632-03-000012

DRAWING PROJECT NO. 07

