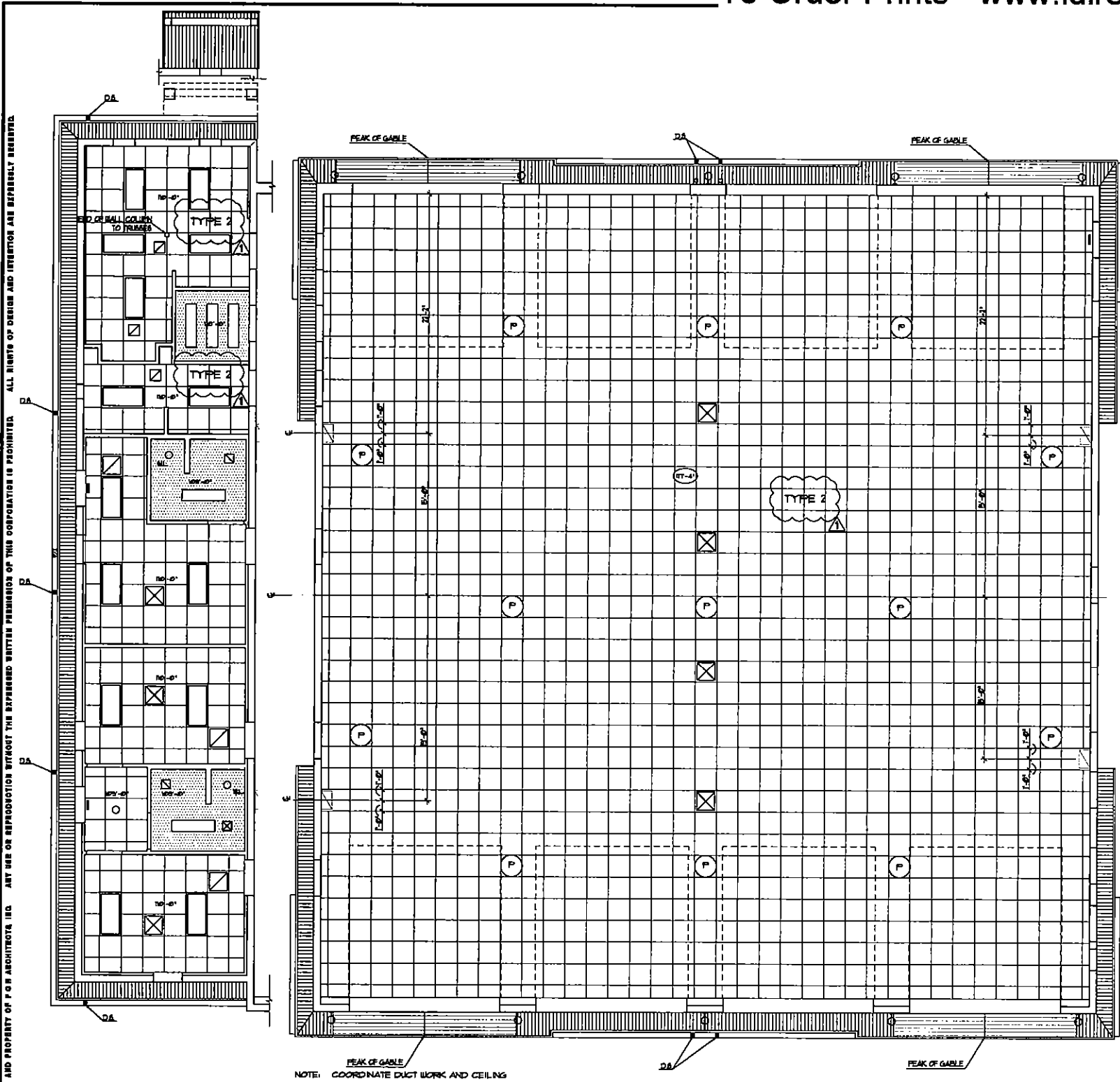
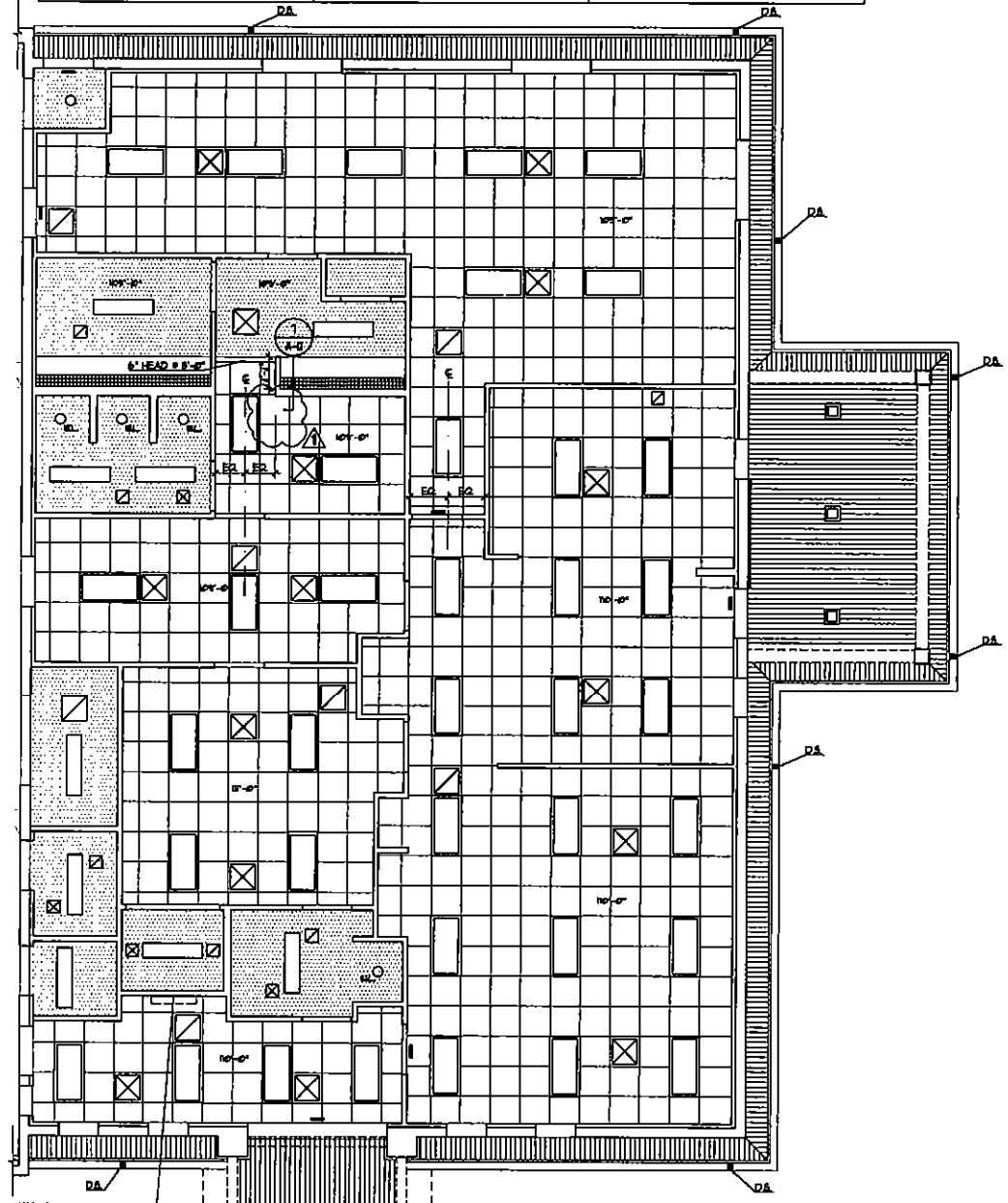


© 2007 THIS DRAWING IS THE INSTRUMENT OF SERVICE AND PROPERTY OF P.O.H. ARCHITECTS, INC. ANY USE OR REPRODUCTION WITHOUT THE WRITTEN PERMISSION OF THIS CORPORATION IS PROHIBITED. ALL RIGHTS OF DESIGN AND INVENTION ARE EXPRESSLY RESERVED.



LEGEND:

LIGHT COVE - SEE 1/A-D	SURFACE MOUNTED PENDANT LIGHT FIXTURE	2 1/2' x 4' FLUORESCENT LIGHT FIXTURE
2' x 2' ACOUSTICAL LAY-IN CEILING TILE TYPE 1 (LON TYPE 1 & 2 (SEE SPEC))	ROUND RECESSED LIGHT FIXTURE	RECESSED LIGHT FIXTURE
DRYWALL CEILING 5'-0" UON - SEE NOTE 1	ROUND RECESSED LIGHT FIXTURE (SET LOCATION)	RETURN AIR GRILLE
NON PERFORATED METAL GOFFIT MATERIAL	WALL MOUNTED LIGHT FIXTURE	SUPPLY AIR GRILLE
	EXIT SIGN	CEILING HEIGHT (ABOVE FINISH FLOOR)
	2 1/2' x 4' FLUORESCENT LIGHT FIXTURE (SURFACE MOUNTED)	



3/16"=1'-0" **REFLECTED CEILING PLAN**

- REFLECTED CEILING PLAN NOTES:**
1. ALL DRYWALL CEILINGS TO BE SUSPENDED FROM THE BOTTOM CHORD OF TRUSSES WHICH SHALL HAVE A SMOOTH PAINTED FINISH.
 2. CONTRACTOR SHALL COORDINATE LOCATIONS OF ALL LIGHT FIXTURES, HVAC SUPPLY & RETURN GRILLES, AND FIRE SPRINKLER HEADS WITH THE ARCHITECT PRIOR TO INSTALLATION.
 3. CONTRACTOR SHALL NOTIFY THE CITY OF JACK, A MINIMUM SIX WEEKS IN ADVANCE, WHEN CONCEALED SPACES WITHIN FLOOR AND CEILING ASSEMBLIES WILL BE CLOSED UP.
 4. PROVIDE FLUSH INSTALLED "DRYWALL" TYPE ACCESS PANELS EQUAL TO LARSEN'S MODEL "L-DUR" WHERE REQUIRED BY DIVISION 5 AND 16 OF THE PROJECT SPECIFICATIONS OR WHERE OTHERWISE REQUIRED TO PROVIDE ACCESS TO CONCEALED MECHANICAL, PLUMBING, TELECOMMUNICATION AND ELECTRICAL SYSTEMS LOCATED ABOVE GUEL CEILINGS. COORDINATE PROPOSED LOCATIONS OF ACCESS PANELS WITH ARCHITECT PRIOR TO INSTALLING.
 5. ALL ACOUSTICAL CEILING TILE IS TO BE USG SHEETROCK BRAND LAY-IN CEILING PANEL. CLIMAPLUS, VINYL. ITEM NO. 3260 2'x2'x1/2"

© 2007 THIS DRAWING IS THE INSTRUMENT OF SERVICE AND PROPERTY OF P O H ARCHITECTS, INC. ANY USE OR REPRODUCTION WITHOUT THE EXPRESSED WRITTEN PERMISSION OF THIS CORPORATION IS PROHIBITED. ALL RIGHTS OF DESIGN AND INVENTION ARE EXPRESSLY RESERVED.