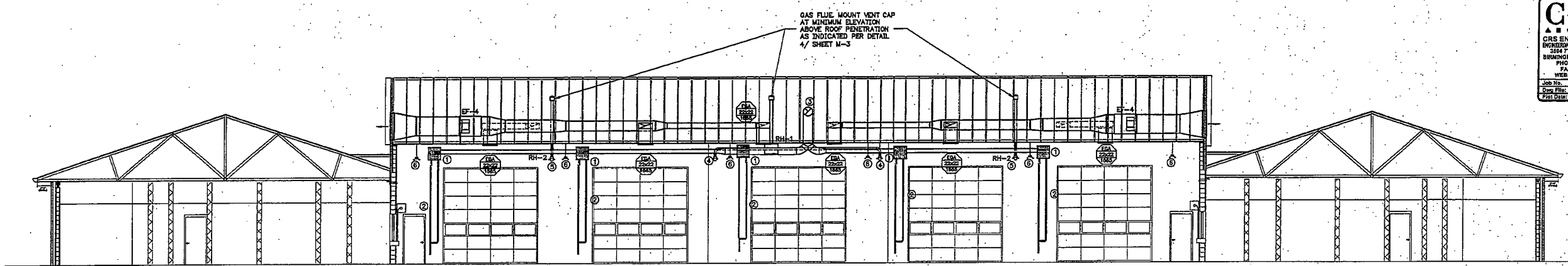


C.R.S.
 CRS ENGINEERING, INC.
 BIRMINGHAM DESIGN OFFICE
 354 7TH AVENUE SOUTH
 BIRMINGHAM, ALABAMA 35222
 PHONE: 205-252-2772
 FAX: 205-252-2771
 WEB: www.crsai.com

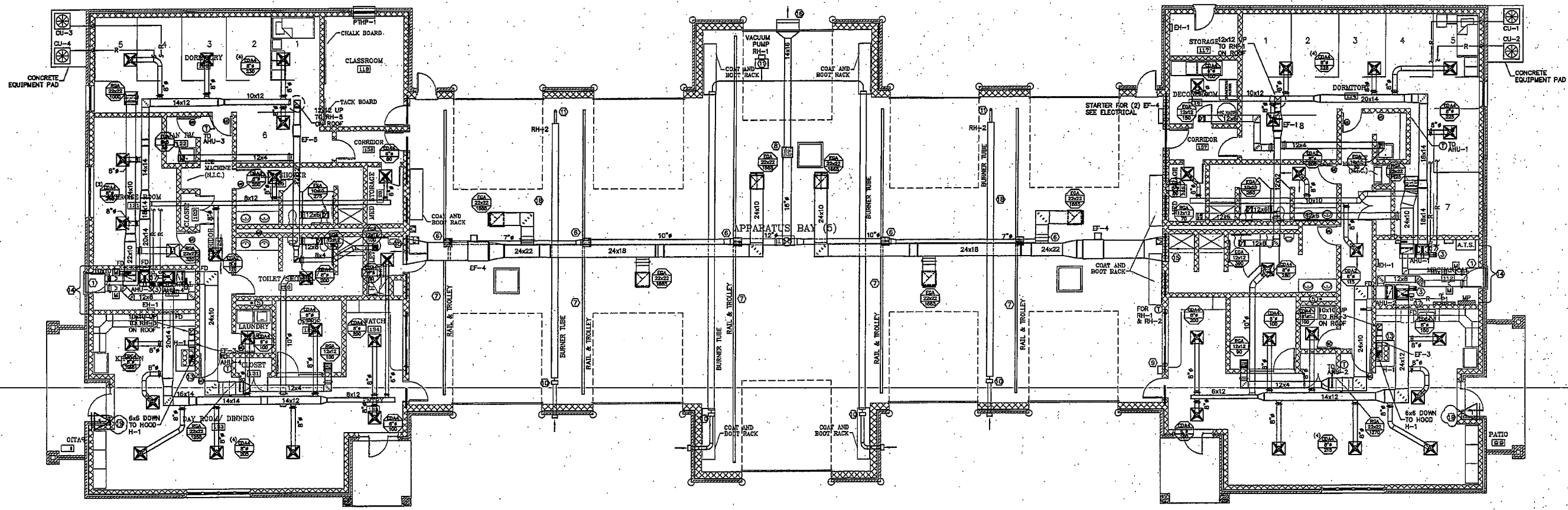
Job No. 08073.00
 Draw File: 08073M01.DWG
 Plot Date: 4/18/2007

NO.	DATE	BY	DESCRIPTION
1	04/18/2007	EH	CITY COMMENTS



**BUILDING SECTION
 MECHANICAL**
 0 2 4 8 16
 SCALE: 1/8"=1'-0"

- DRAWING NOTES:**
- ① EMERGENCY VEHICLE EXHAUST ASSEMBLY FOR DUCT CONNECTION. CEILING MOUNTED TO CEILING JOISTS/TRUSSES.
 - ② EMERGENCY VEHICLE EXHAUST TRACK AND TROLLEY SYSTEM FOR DUCT CONNECTION.
 - ③ 3000 CFM EXHAUST FAN (EF-2) WITH SUSPENSION PLATFORM. INLET TEE, FLEXIBLE CONNECTION (SEE DETAIL 9/M-3). ROUTE EXHAUST FROM FAN TO WALL LOUVER.
 - ④ GAS INFRARED RADIANT HEATER (50' TUBE LENGTH)
 - ⑤ GAS INFRARED RADIANT HEATER (40' TUBE LENGTH)
 - ⑥ LIGHT FIXTURE BY THE ELECTRICAL CONTRACTOR. SHOWN FOR REFERENCE ONLY.

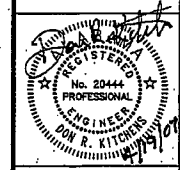


**FLOOR PLAN
 MECHANICAL**
 0 2 4 6 8 16
 SCALE: 1/8"=1'-0"

VEHICLE EXHAUST SCAVENGING SYSTEM
 NEDERMAN, INC. MODEL MAGNARAIL VEHICLE EXHAUST SCAVENGING SYSTEM. SYSTEM TO BE DESIGNED BY: NEDERMAN, INC.
 39115 WARREN ROAD
 WESTLAND, MI 48185
 (734) 729-3344

CONTRACTOR TO CONTACT MANUFACTURER AND DISTRIBUTOR TO ARRANGE SYSTEM DESIGN AND PRICING INFORMATION TO INCLUDE IN CONTRACTOR'S TOTAL BID AMOUNT. SEE MECHANICAL SPECIFICATION, SECTION 15868A ALTERNATE VEHICLE EXHAUST SCAVENGING SYSTEM.

- DRAWING NOTES:**
- ① OUTSIDE AIR INTAKE LOUVER, 1.7 SQ. FT. NET FREE AREA. RUSKIN ELF375X 36" Wx18" H (OR APPROVED EQUAL) W/ BIRDSCREEN.
 - ② OUTSIDE AIR INTAKE LOUVER, 0.8 SQ. FT. NET FREE AREA. RUSKIN ELF375X 36" Wx12" H (OR APPROVED EQUAL) W/ BIRDSCREEN.
 - ③ 3" PVC COMBUSTION AIR INTAKE AND COMBUSTION EXHAUST PIPING UP TO A CONCENTRIC VENT THROUGH THE ROOF.
 - ④ 2" PVC COMBUSTION AIR INTAKE AND COMBUSTION EXHAUST PIPING UP TO A CONCENTRIC VENT THROUGH THE ROOF.
 - ⑤ DRYER EXHAUST DUCTWORK SHALL BE CONSTRUCTED OF MINIMUM 26 GAUGE GALVANIZED STEEL. THE INTERIOR SHALL BE SMOOTH WITH NO PROJECTIONS AND JOINTS RUNNING IN THE DIRECTION OF AIR FLOW. ROUTE UP THROUGH ROOF. SEE DETAIL.
 - ⑥ EMERGENCY VEHICLE EXHAUST ASSEMBLY FOR DUCT CONNECTION
 - ⑦ EMERGENCY VEHICLE EXHAUST TRACK AND TROLLEY SYSTEM FOR DUCT CONNECTION
 - ⑧ 3000 CFM EXHAUST FAN (EF-2) WITH SUSPENSION PLATFORM. INLET TEE, FLEXIBLE CONNECTION. ROUTE EXHAUST FROM FAN TO WALL LOUVER (SEE DETAIL 9/M-3).
 - ⑨ EMERGENCY VEHICLE EXHAUST SYSTEM CONTROL PANEL.
 - ⑩ RADIANT HEATER BURNER. COORDINATE SIDEWALL COMBUSTION AIR INTAKE WITH ARCHITECT'S EXTERIOR ELEVATIONS. CONNECTION TO BURNER SHALL BE MADE WITH A 4" INSULATED DUCT PER MANUFACTURER'S INSTALLATION INSTRUCTIONS.
 - ⑪ INSTALL GAS VENT FLUE THROUGH ROOF IN ACCORDANCE WITH MANUFACTURER'S INSTALLATION REQUIREMENTS. SEE DETAILS. 4" TYPE 'B' VENT THROUGH ROOF WITH FLASHING AND WEATHER CAP.
 - ⑫ WATER HEATER DIRECT VENT PIPING. SEE DETAIL 5/M-3. COORDINATE WITH PLUMBING.
 - ⑬ EXHAUST HOOD (H-1) IS CONNECTED TO EF-3 BY SELKIRK METALBESTOS 6" MODEL IPS-04 GREASE EXHAUST DUCT. CONTRACTOR TO PROVIDE COMPLETE INSTALLED GREASE EXHAUST DUCT SYSTEM WITH HANGERS, SUPPORTS, COLLARS, FITTINGS, AND FLASHING TO MAINTAIN U.L. LISTED RATED.
 - ⑭ SEE ENLARGED MECHANICAL ROOM COORDINATION DRAWING DETAIL #8 SHEET M-3.
 - ⑮ EXHAUST AIR LOUVER, 6.7 SQ FT NET FREE AREA. RUSKIN ELF375X (OR APPROVED EQUAL) 48" Wx48" H W/ BIRDSCREEN THROUGH GABLE.
 - ⑯ EXHAUST AIR LOUVER, 4.0 SQ FT NET FREE AREA. RUSKIN ELF375X (OR APPROVED EQUAL) 48" Wx24" H W/ BIRDSCREEN THROUGH GABLE.
 - ⑰ 3/4" CONDENSATE DRAIN LINE. ROUTE ALONG WALL TO NEAREST FLOOR DRAIN (SEE PLUMBING). TYPICAL ALL UNITS.
 - ⑱ GENERAL CONTRACTOR TO PROVIDE LIGHTING AND WALKWAY TO EQUIPMENT INSTALLED IN ATTIC.
 - ⑲ MANUAL PULL STATION FOR HOOD FIRE SUPPRESSION SYSTEM. MANUAL ACTIVATION TO INITIATE BUILDING FIRE ALARM SYSTEM.



DEPARTMENT OF
**PLANNING, ENGINEERING
 AND PERMITTING**
 CITY OF BIRMINGHAM
 WILLIAM A. GILCHRIST, DIRECTOR
 PAUL L. JENNINGS, AIA, CITY ARCHITECT

**FLOOR PLAN
 MECHANICAL**
 Fire Station 10/22
 4439 9th Avenue South
 Birmingham, AL 35222

PROJECT NUMBER
 SHEET NUMBER
M-4
 OF

To order plans, go to www.lidrepro.com