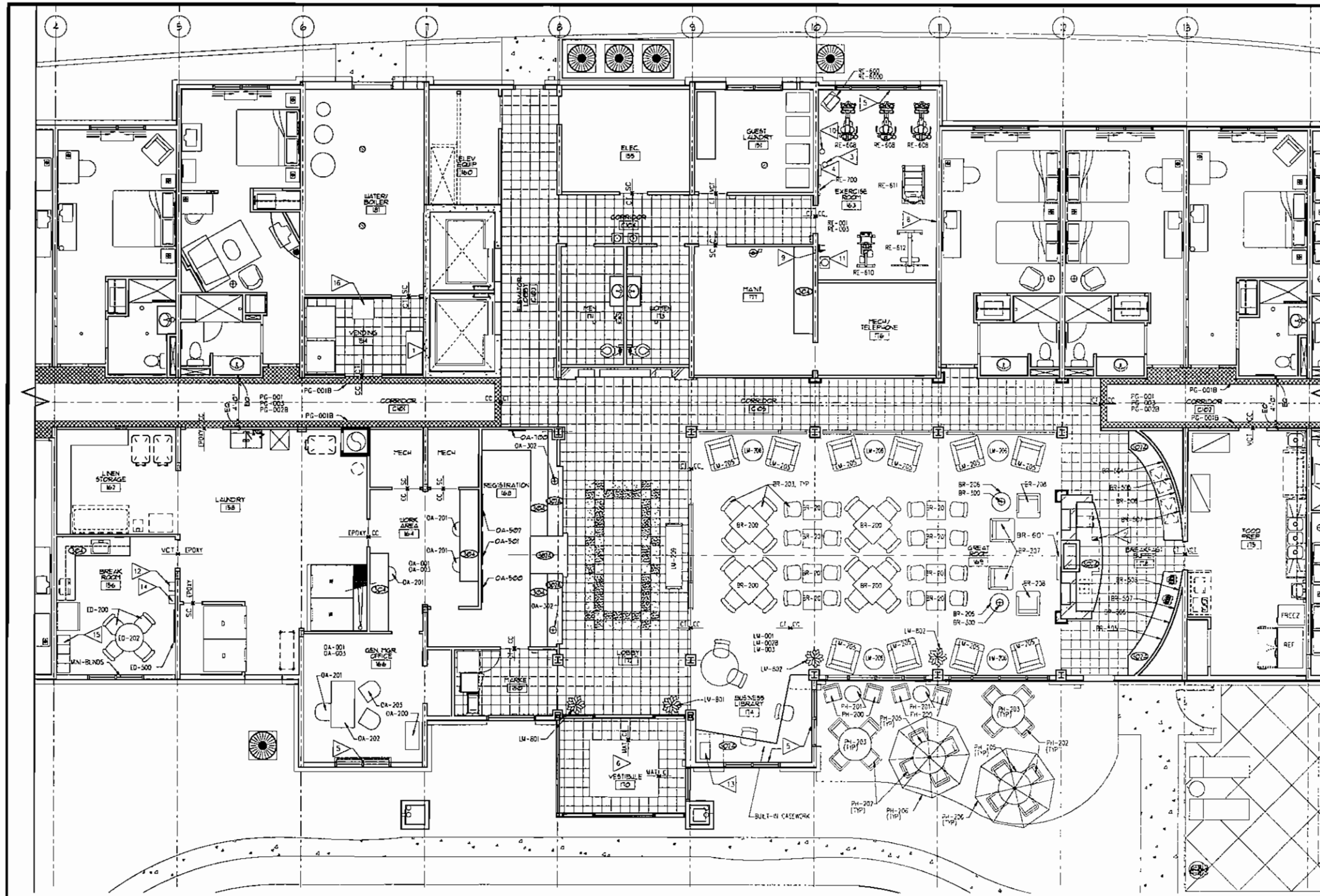
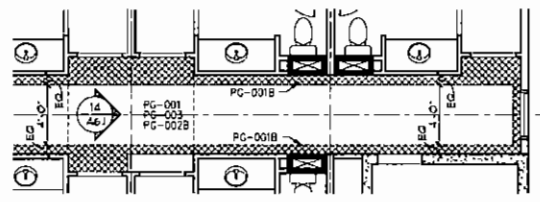


To Order Prints - www.lidirepro.com



1 ENLARGED PUBLIC SPACE INTERIOR DESIGN PLAN
SCALE: 3/8"=1'-0"

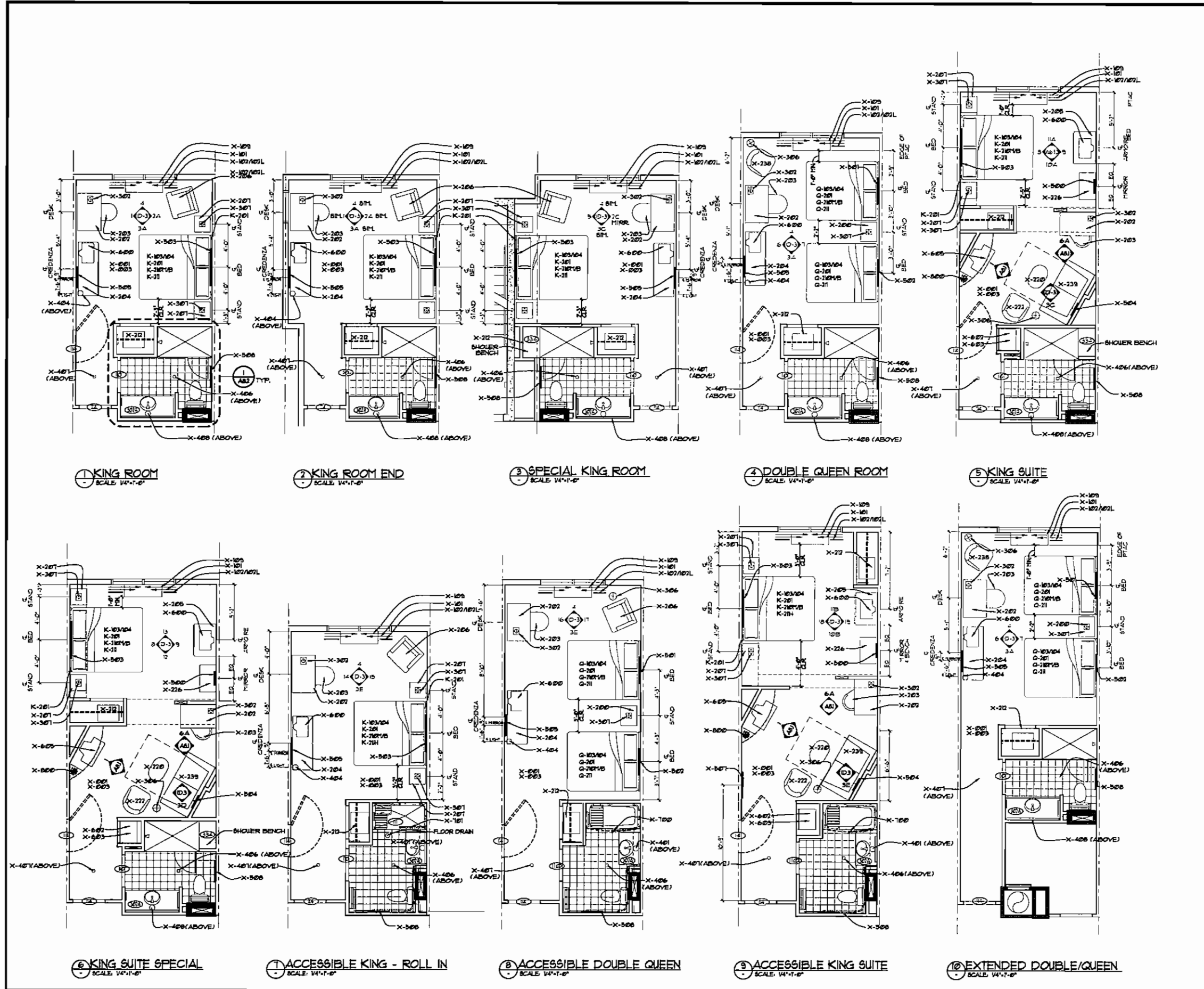


2 TYPICAL CORRIDOR CARPET PLAN
SCALE: 3/8"=1'-0"

LOBBY FURNISHINGS	
BREAKFAST AREA	
BR-001	FLOOR CARPET
BR-002B	CARPET BASE
BR-003	FLOOR PADDING
BR-101	SHIERS
BR-102	DRAPERY
BR-103	FABRIC VALANCE
BR-200	TABLE (24" X 30")
BR-201	TABLE (24" X 30")
BR-202	DINING CHAIRS
BR-203	BAR STOOL
BR-204	LOUNGE CHAIRS
BR-205	SOFA
BR-206	SOFA TABLE
BR-207	HIGH BR LOUNGE CHAIR
BR-208	SOFA CHAIR
BR-209	COFFEE TABLE
BR-300	TABLE LAMP
BR-400	PENDANT LAMPS
BR-407	SCONCE
BR-409	36" CHANDELIER
BR-501	ART WORK
BR-502	ART WORK
BR-503	ART WORK
BR-504	ART WORK
BR-505	ART WORK
BR-506	ART WORK
BR-507	ART WORK
BR-508	ART WORK
BR-509	ART WORK
BR-501	47" FLAT SCREEN TV
OFFICE / WORK	
OA-001	FLOOR CARPET
OA-003	FLOOR PADDING
OA-200	FILE CABINET
OA-201	DESK CHAIR
OA-202	DESK
OA-203	GUEST CHAIR
OA-500	17" BRASS LOGO SIGN
OA-500A	17" & SUITES SIGN
OA-700	CLOCK
OA-302	LAMP
CORRIDOR	
PG-101	SHIERS
PG-102	DRAPERY
PG-103	VALANCE
PG-407	SCONCE
PG-412	18" PENDANT
PG-601	FLOOR CARPET
PG-602B	FLOOR CARPET
PG-603B	CARPET BASE
PG-603	FLOOR PADDING
LOBBY	
LM-001	FLOOR CARPET
LM-002B	CARPET BASE
LM-003	FLOOR PADDING
LM-004	CARPET SPLICER
LM-101	SHIERS
LM-102	DRAPERY
LM-103	VALANCE
LM-104	SOFA
LM-105	FLOOR SOFA
LM-106	SOFA PILLOWS
LM-107	LOBBY END TABLE
LM-108	SOFA TABLE
LM-109	FOCAL LOUNGE CHAIR
LM-110	SOFA TABLE
LM-111	HIGH BACK LOUNGE CHAIR
LM-112	SOFA CHAIR
LM-113	SOFA CHAIR
LM-114	FOCAL TABLE LAMP
LM-115	SOFA TABLE LAMP
LM-116	VANITY LIGHT
LM-407	SCONCE
LM-408	36" CHANDELIER
LM-501	ART WORK
LM-502	ART WORK
LM-503	ART WORK
LM-504	MIRROR
LM-505	ART WORK
LM-506	ART WORK
LM-507	ART WORK
LM-508	ART WORK
LM-509	ART WORK
LM-510	ART WORK
LM-511	ART WORK
LM-512	ART WORK
LM-513	ART WORK
LM-514	ART WORK
LM-515	ART WORK
LM-516	ART WORK
LM-517	ART WORK
LM-518	ART WORK
LM-519	ART WORK
LM-520	ART WORK
LM-521	ART WORK
LM-522	ART WORK
LM-523	ART WORK
LM-524	ART WORK
LM-525	ART WORK
LM-526	ART WORK
LM-527	ART WORK
LM-528	ART WORK
LM-529	ART WORK
LM-530	ART WORK
LM-531	ART WORK
LM-532	ART WORK
LM-533	ART WORK
LM-534	ART WORK
LM-535	ART WORK
LM-536	ART WORK
LM-537	ART WORK
LM-538	ART WORK
LM-539	ART WORK
LM-540	ART WORK
LM-541	ART WORK
LM-542	ART WORK
LM-543	ART WORK
LM-544	ART WORK
LM-545	ART WORK
LM-546	ART WORK
LM-547	ART WORK
LM-548	ART WORK
LM-549	ART WORK
LM-550	ART WORK
LM-551	ART WORK
LM-552	ART WORK
LM-553	ART WORK
LM-554	ART WORK
LM-555	ART WORK
LM-556	ART WORK
LM-557	ART WORK
LM-558	ART WORK
LM-559	ART WORK
LM-560	ART WORK
LM-561	ART WORK
LM-562	ART WORK
LM-563	ART WORK
LM-564	ART WORK
LM-565	ART WORK
LM-566	ART WORK
LM-567	ART WORK
LM-568	ART WORK
LM-569	ART WORK
LM-570	ART WORK
LM-571	ART WORK
LM-572	ART WORK
LM-573	ART WORK
LM-574	ART WORK
LM-575	ART WORK
LM-576	ART WORK
LM-577	ART WORK
LM-578	ART WORK
LM-579	ART WORK
LM-580	ART WORK
LM-581	ART WORK
LM-582	ART WORK
LM-583	ART WORK
LM-584	ART WORK
LM-585	ART WORK
LM-586	ART WORK
LM-587	ART WORK
LM-588	ART WORK
LM-589	ART WORK
LM-590	ART WORK
LM-591	ART WORK
LM-592	ART WORK
LM-593	ART WORK
LM-594	ART WORK
LM-595	ART WORK
LM-596	ART WORK
LM-597	ART WORK
LM-598	ART WORK
LM-599	ART WORK
LM-600	ART WORK
LM-601	ART WORK
LM-602	ART WORK
LM-603	ART WORK
LM-604	ART WORK
LM-605	ART WORK
LM-606	ART WORK
LM-607	ART WORK
LM-608	ART WORK
LM-609	ART WORK
LM-610	ART WORK
LM-611	ART WORK
LM-612	ART WORK
LM-613	ART WORK
LM-614	ART WORK
LM-615	ART WORK
LM-616	ART WORK
LM-617	ART WORK
LM-618	ART WORK
LM-619	ART WORK
LM-620	ART WORK
LM-621	ART WORK
LM-622	ART WORK
LM-623	ART WORK
LM-624	ART WORK
LM-625	ART WORK
LM-626	ART WORK
LM-627	ART WORK
LM-628	ART WORK
LM-629	ART WORK
LM-630	ART WORK
LM-631	ART WORK
LM-632	ART WORK
LM-633	ART WORK
LM-634	ART WORK
LM-635	ART WORK
LM-636	ART WORK
LM-637	ART WORK
LM-638	ART WORK
LM-639	ART WORK
LM-640	ART WORK
LM-641	ART WORK
LM-642	ART WORK
LM-643	ART WORK
LM-644	ART WORK
LM-645	ART WORK
LM-646	ART WORK
LM-647	ART WORK
LM-648	ART WORK
LM-649	ART WORK
LM-650	ART WORK
LM-651	ART WORK
LM-652	ART WORK
LM-653	ART WORK
LM-654	ART WORK
LM-655	ART WORK
LM-656	ART WORK
LM-657	ART WORK
LM-658	ART WORK
LM-659	ART WORK
LM-660	ART WORK
LM-661	ART WORK
LM-662	ART WORK
LM-663	ART WORK
LM-664	ART WORK
LM-665	ART WORK
LM-666	ART WORK
LM-667	ART WORK
LM-668	ART WORK
LM-669	ART WORK
LM-670	ART WORK
LM-671	ART WORK
LM-672	ART WORK
LM-673	ART WORK
LM-674	ART WORK
LM-675	ART WORK
LM-676	ART WORK
LM-677	ART WORK
LM-678	ART WORK
LM-679	ART WORK
LM-680	ART WORK
LM-681	ART WORK
LM-682	ART WORK
LM-683	ART WORK
LM-684	ART WORK
LM-685	ART WORK
LM-686	ART WORK
LM-687	ART WORK
LM-688	ART WORK
LM-689	ART WORK
LM-690	ART WORK
LM-691	ART WORK
LM-692	ART WORK
LM-693	ART WORK
LM-694	ART WORK
LM-695	ART WORK
LM-696	ART WORK
LM-697	ART WORK
LM-698	ART WORK
LM-699	ART WORK
LM-700	ART WORK
LM-701	ART WORK
LM-702	ART WORK
LM-703	ART WORK
LM-704	ART WORK
LM-705	ART WORK
LM-706	ART WORK
LM-707	ART WORK
LM-708	ART WORK
LM-709	ART WORK
LM-710	ART WORK
LM-711	ART WORK
LM-712	ART WORK
LM-713	ART WORK
LM-714	ART WORK
LM-715	ART WORK
LM-716	ART WORK
LM-717	ART WORK
LM-718	ART WORK
LM-719	ART WORK
LM-720	ART WORK
LM-721	ART WORK
LM-722	ART WORK
LM-723	ART WORK
LM-724	ART WORK
LM-725	ART WORK
LM-726	ART WORK
LM-727	ART WORK
LM-728	ART WORK
LM-729	ART WORK
LM-730	ART WORK
LM-731	ART WORK
LM-732	ART WORK
LM-733	ART WORK
LM-734	ART WORK
LM-735	ART WORK
LM-736	ART WORK
LM-737	ART WORK
LM-738	ART WORK
LM-739	ART WORK
LM-740	ART WORK
LM-741	ART WORK
LM-742	ART WORK
LM-743	ART WORK
LM-744	ART WORK
LM-745	ART WORK
LM-746	ART WORK
LM-747	ART WORK
LM-748	ART WORK
LM-749	ART WORK
LM-750	ART WORK
LM-751	ART WORK
LM-752	ART WORK
LM-753	ART WORK
LM-754	ART WORK
LM-755	ART WORK
LM-756	ART WORK
LM-757	ART WORK
LM-758	ART WORK
LM-759	ART WORK
LM-760	ART WORK
LM-761	ART WORK
LM-762	ART WORK
LM-763	ART WORK
LM-764	ART WORK
LM-765	ART WORK
LM-766	ART WORK
LM-767	ART WORK
LM-768	ART WORK
LM-769	ART WORK
LM-770	ART WORK
LM-771	ART WORK
LM-772	ART WORK
LM-773	ART WORK
LM-774	ART WORK
LM-775	ART WORK
LM-776	ART WORK
LM-777	ART WORK
LM-778	ART WORK
LM-779	ART WORK
LM-780	ART WORK
LM-781	ART WORK
LM-782	ART WORK
LM-783	ART WORK
LM-784	ART WORK
LM-785	ART WORK
LM-786	ART WORK
LM-787	ART WORK
LM-788	ART WORK
LM-789	ART WORK
LM-790	ART WORK
LM-791	ART WORK
LM-792	ART WORK
LM-793	ART WORK
LM-794	ART WORK
LM-795	ART WORK
LM-796	ART WORK
LM-797	ART WORK
LM-798	ART WORK
LM-799	ART WORK
LM-800	ART WORK
LM-801	ART WORK
LM-802	ART WORK
LM-803	ART WORK
LM-804	ART WORK
LM-805	ART WORK
LM-806	ART WORK
LM-807	ART WORK
LM-808	ART WORK
LM-809	ART WORK
LM-810	ART WORK
LM-811	ART WORK
LM-812	ART WORK
LM-813	ART WORK
LM-814	ART WORK
LM-815	ART WORK
LM-816	ART WORK
LM-817	ART WORK
LM-818	ART WORK
LM-819	ART WORK
LM-820	ART WORK
LM-821	ART WORK
LM-822	ART WORK
LM-823	ART WORK
LM-824	ART WORK
LM-825	ART WORK
LM-826	ART WORK
LM-827	ART WORK
LM-828	ART WORK
LM-829	ART WORK
LM-830	ART WORK
LM-831	ART WORK
LM-832	ART WORK
LM-833	ART WORK
LM-834	ART WORK
LM-835	ART WORK
LM-836	ART WORK
LM-837	ART WORK
LM-838	ART WORK
LM-839	ART WORK
LM-840	ART WORK
LM-841	ART WORK
LM-842	ART WORK
LM-843	ART WORK
LM-844	ART WORK
LM-845	ART WORK
LM-846	ART WORK
LM-847	ART WORK
LM-848	ART WORK
LM-849	ART WORK
LM-850	ART WORK
LM-851	ART WORK
LM-852	ART WORK
LM-853	ART WORK
LM-854	ART WORK
LM-855	ART WORK
LM-856	ART WORK
LM-857	ART WORK
LM-858	ART WORK
LM-859	ART WORK
LM-860	ART WORK
LM-861	ART WORK
LM-862	ART WORK
LM-863	ART WORK
LM-864	ART WORK
LM-865	ART WORK
LM-866	ART WORK
LM-867	ART WORK
LM-868	ART WORK
LM-869	ART WORK
LM-870	ART WORK
LM-871	ART WORK
LM-872	ART WORK
LM-873	ART WORK
LM-874	ART WORK
LM-875	ART WORK
LM-876	ART WORK
LM-877	ART WORK
LM-878	ART WORK
LM-879	ART WORK
LM-880	ART WORK
LM-881	ART WORK
LM-882	ART WORK
LM-883	ART WORK

To Order Prints - www.lidirepro.com

DRAWING NO. UPDATED:



- GENERAL NOTES
- REFER TO SHEET 015 FOR FINISH SCHEDULE
 - SEE FAIRFIELD INN BY MARRIOTT INTERIOR FINISH INDEX FOR FINISH NUMBERS MARKED (F)
 - SEE FAIRFIELD INN BY MARRIOTT BILL OF MATERIALS REPORT FOR FURNITURE REF. DESIG.
 - ALL ELECTRICAL OUTLETS TO BE PREFINISHED ALMOND.
 - CORNER GUARDS TO BE FULL HEIGHT AND SECURED WITH PLASTIC.
 - CENTER TILE ON FIREPLACE AND REGISTRATION DESK.

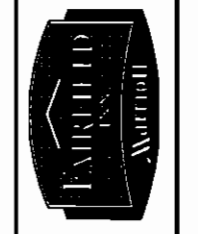
GUESTROOM FURNISHINGS

ITEM #	DESCRIPTION
X-000	CLARINET
X-001B	CARPET BASE
X-003	PADDING
X-101	SHEER
X-103	STATIONARY SIDE PANELS
X-104	LIVING
X-105	BLACKOUT DRAPE
X-200	12" NIGHTSTAND / DRILL 27" X 18" X 23"
X-207	TABLE DESK
X-203	TASK CHAIR (REGO)
X-204	60" CREDENZA
X-205	ARMCHAIR
X-206	LOUNGE CHAIR
X-207	NIGHTSTAND 2 DRU 18" X 18" X 23"
X-208	BY ROUND SIDE TABLE
X-209	LUGGAGE RACK
X-210	COCKTAIL TABLE
X-211	SEAT CHAIR (ROUND BACK)
X-212	SOFA
X-213	OTTOMAN
X-214	BENCH
X-215	ROUND BACK CHAIR
X-216	LOVESEAT SLEEPER 164"
X-307	DESK LAMP/TASK LAMP
X-306	FLOOR LAMP
X-307	NIGHTSTAND LAMP
X-308	SIDE LAMP
X-401	VANITY LIGHT 35"
X-404	BALL SCIENCE
X-406	BATH CEILING FUTURE
X-407	RELOCATE LIGHT
X-408	VANITY LIGHT 30"
X-500	WALL MIRROR (100x60)
X-501	ART WORK OVER DO BED
X-502	ART WORK OVER DO BED
X-503	ART WORK OVER KING BED
X-504	ARTWORK OVER SOFA
X-505	WALL MIRROR OVER CREDENZA
X-507	ARTWORK (BATHROOM)
X-508	ARTWORK (BATHROOM)
X-600	COLOR TV 35" W/ LOCKING
X-601	SURVIVAL BASE UNDER COUNTER REFRIGERATOR
X-603	TORCHLAMP
X-605	37" TELEVISION
X-700	TUB CURTAIN
X-701	ROLL-IN SHOWER CURTAIN
X-702	SHOWER CURTAIN
X-800	SILK PLANT AT TV PLANT
X-801	PLANT
K-101	BEDSCART
K-104	BEDSCART
K-201	HEADBOARD
K-201	MATTRESS 9"
K-202	BOX SPRING
K-203	BED BASE
K-204	BEDSCART
O-103	BEDSCART
O-104	BEDSCART
O-101	HEADBOARD
O-101	MATTRESS 9"
O-102	BOX SPRING
O-103	BED BASE



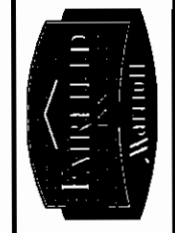
THIS DRAWING IS THE PROPERTY OF ZIVIO & HURDLE ARCHITECTS. NO REPRODUCTION OR USE OF THIS DRAWING FOR ANY OTHER PROJECT WITHOUT THE WRITTEN CONSENT OF ZIVIO & HURDLE ARCHITECTS IS BE SUBJECT TO LEGAL ACTION.

REVISION	DATE	BY	DESCRIPTION	DESIGNED	CHECKED	APPROVED



FAIRFIELD INN & SUITES
PALM COAST, FLORIDA
PROJECT NUMBER: 0811028
SCALE: AS SHOWN
GUESTROOM TYPES
FURNITURE PLANS

REVISION	DATE	BY	DESCRIPTION	DATE	BY	DESCRIPTION



FAIRFIELD INN & SUITES
PALM COAST, FLORIDA
PROJECT NUMBER: 081102Z
SCALE: AS SHOWN
INTERIOR FINISH SCHEDULE

To Order Prints - www.lidirepro.com

FLOOR FINISH #	MATERIAL	DESCRIPTION
100 X-001	Carpet (09680) Guestrooms - Guestroom	Manufacturer: Shaw Industries, Inc. Model: Ovation with Ridge accents Color: Green with Red/Yellow accents
X-003	Carpet Paddling (09680) Guestrooms - Guestroom	Manufacturer: Sponge Chablon, Inc. Material ID # 213 Contact: (For Stretch-In Installation)
X-005	Carpet Paddling (09680) Guestrooms - Guestroom	Manufacturer: Sponge Chablon, Inc. Material ID # 213 Contact: (For Double Glue Installation)
101 BL-001	Carpet (09680) Breakfast Room	Specification provided by Marriot Manufacturer: Shaw Industries, Inc. Model: 120696 Color: Tan, Black, Grey and Brown.
X-003	Carpet Paddling (09680) Breakfast Room	Manufacturer: Sponge Chablon, Inc. Material ID # 212 Contact: (For Stretch-In Installation)
101A LM-001	Carpet (09680) Lobby	Specification provided by Marriot Manufacturer: Shaw Industries, Inc. Model: 120696 Color: Tan, Black, Grey and Brown.
LM-003	Carpet Paddling (09680) Lobby	Manufacturer: Sponge Chablon, Inc. Material ID # 212 Contact: (For Stretch-In Installation)
102 BL-001	Carpet (09680) Business Library - Stairwells	Specification provided by Marriot Manufacturer: Shaw Industries, Inc. Model: 120696 Color: Tan, Black, Grey and Brown.
BL-003	Carpet Paddling (09680) Business Library - Stairwells	Manufacturer: Sponge Chablon, Inc. Material ID # 212 Contact: (For Stretch-In Installation)

FLOOR FINISH #	MATERIAL	DESCRIPTION
103	Tile (09310) Breakfast Room - Buffet/Field, Elevator Lobby (1st floor only), Lobby, Foyer, Public Restrooms, Vending, Vending	Manufacturer: Ceramic Technics Product: Ceramic Model: Cooperative Stoneware Color: Classic Crema Size (HxWxD): 12" X 12" Contact: Gerry King 770 740 0050 x 203
	Tile Grout (09310) Breakfast Room - Buffet/Field, Elevator Lobby (1st floor only), Lobby, Foyer, Public Restrooms, Vending, Vending	Manufacturer: Laticrete International, Inc. Product: Laticrete Color: 85 Almond Field Nick Maczino 800 243 4788 x 602
103A	Tile (09310) Lobby - Focal seating area - Border	Manufacturer: Ceramic Technics Product: Ceramic Model: Cozen Porcelain Color: Terracotta Hound Size (HxWxD): 8" X 8" Contact: Gerry King 770 740 0050 x 203
	Tile Grout (09310) Lobby - Focal seating area - Border	Manufacturer: Laticrete International, Inc. Product: Laticrete Color: 85 Almond Accent Nick Maczino 800 243 4788 x 602
	Tile (09310) Elevator Lobby - First floor only - Border (Use w/ #103B)	Manufacturer: Ceramic Technics Product: Ceramic Model: Cozen Grigio Color: Terracotta Hound Size (HxWxD): 12" X 12" Contact: Gerry King 770 740 0050 x 203
	Tile Grout (09310) Elevator Lobby - First floor only - Border (Use w/ #103B)	Manufacturer: Laticrete International, Inc. Product: Laticrete Color: 85 Almond Accent Nick Maczino 800 243 4788 x 602

FLOOR FINISH #	MATERIAL	DESCRIPTION
103B	Tile (09310) Lobby - Focal seating area - Border	Manufacturer: Ceramic Technics Product: Ceramic Model: Cozen Porcelain Color: Terracotta Hound Size (HxWxD): 8" X 8" Contact: Gerry King 770 740 0050 x 203
	Tile Grout (09310) Lobby - Focal seating area - Border	Manufacturer: Laticrete International, Inc. Product: Laticrete Color: 85 Almond Accent Nick Maczino 800 243 4788 x 602
	Tile (09310) Elevator Lobby - First floor only - Border (Use w/ #103A)	Manufacturer: Ceramic Technics Product: Ceramic Model: Cozen Porcelain Color: Terracotta Hound Size (HxWxD): 12" X 12" Contact: Gerry King 770 740 0050 x 203
	Tile Grout (09310) Elevator Lobby - First floor only - Border (Use w/ #103A)	Manufacturer: Laticrete International, Inc. Product: Laticrete Color: 85 Almond Accent Nick Maczino 800 243 4788 x 602
104	Tile (09310) Guestrooms - Acc. Bath w/ tub (Field), Guestrooms Bath (Field), Walk-in Shower, Guestroom	Manufacturer: Crossville Ceramic Co. Product: Ceramic Model: Sahara Stone Color: Cream - Pin Size (HxWxD): 12" X 12" Contact: Nancy Wyatt 931 484 2110
	Tile Grout (09310) Guestrooms - Acc. Bath w/ tub (Field), Guestrooms Bath (Field), Walk-in Shower, Guestroom	Manufacturer: Laticrete International, Inc. Product: Laticrete Color: 39 Mushroom Nick Maczino 800 243 4788 x 602

FLOOR FINISH #	MATERIAL	DESCRIPTION
104A	Tile (09310) Guestrooms - Bath, Guestrooms - Walk-in Shower, Guestrooms - Bath, Guestrooms - Bath (Alternate border pattern w/ #104B)	Manufacturer: Crossville Ceramic Co. Product: Ceramic Model: Bamboo Color: Unpolished Size (HxWxD): 8" X 8" Contact: Nancy Wyatt 931 484 2110
	Tile Grout (09310) Guestrooms - Bath, Guestrooms - Walk-in Shower, Guestrooms - Bath (Alternate border pattern w/ #104B)	Manufacturer: Laticrete International, Inc. Product: Laticrete Color: 39 Mushroom Nick Maczino 800 243 4788 x 602
104B	Tile (09310) Guestrooms - Bath, Guestrooms - Walk-in Shower, Guestrooms - Bath (Alternate border pattern w/ #104A)	Manufacturer: Crossville Ceramic Co. Product: Ceramic Model: Unpolished Color: A310 Size (HxWxD): 8" X 8" Contact: Nancy Wyatt 931 484 2110
	Tile Grout (09310) Guestrooms - Bath, Guestrooms - Walk-in Shower, Guestrooms - Bath (Alternate border pattern w/ #104A)	Manufacturer: Laticrete International, Inc. Product: Laticrete Color: 39 Mushroom Nick Maczino 800 243 4788 x 602
105 PG-001	Carpet (09680) Guestrooms - Acc. Bath w/ tub (Field), Guestrooms Bath (Field), Walk-in Shower, Guestroom	Specification provided by Marriot Manufacturer: Shaw Industries, Inc. Material ID # 120696 Color: Green with Yellow/Lt. Green accents
PG-003	Carpet Paddling (09680) Guestrooms - Acc. Bath w/ tub (Field), Guestrooms Bath (Field), Walk-in Shower, Guestroom	Manufacturer: Sponge Chablon, Inc. Material ID # 212 Contact: (For Stretch-In Installation)
108	Sealed Concrete (09900) Elevator Lobby, Elevator Equipment Room, Maintenance Room, Mechanical Room, Pool Equipment Room, Lifeguard Rm., Electrical Closet, Water Room, 777 Tel.	Comments: See Project Manual Section 09900.

FLOOR FINISH #	MATERIAL	DESCRIPTION
106 DA-001 RE-003 LM-005	Carpet (09680) Work Area, Office, Exercise Room, Lobby - Registration Desk Carpet Paddling (09680) Work Area, Office, Exercise Room, Lobby - Registration Desk	Manufacturer: Shaw Industries, Inc. Material ID # 120696 Color: Tan, Black, Grey and Brown. Manufacturer: Sponge Chablon, Inc. Material ID # 212 Contact: (For Stretch-In Installation)
107	Resilient Flooring (09650) Linen Storage	Manufacturer: Armstrong World Industries, Inc. (Comm. Flooring Div.) Product: VCT Color: Dueser Beige 51809 Pattern: Imperial Texture Size (HxWxD): 12" X 12" Comments: Grid/Pattern to run one direction perp. to wide dimension of room. Contact: Dan Glavin 800 841 6650
109A	Stair Treads and Nosing Stairwells - Interior	Manufacturer: Burke Merrow Flooring Products, (A Division of Burke Industries) Product: Square vinyl nosing Model: Heavy Commercial Color: 200 Light Beige Contact: Julie Tackitt 800.447.8442 x 1014
110	Marble Threshold (09310) Guestrooms - Bath	Manufacturer: Dal-Tile Corp. Product: Marble Material ID # White Carrera Color: 2" Width x 3/4" Depth Contact: Jeff Deam 301.506.3081

FLOOR FINISH #	MATERIAL	DESCRIPTION
111	Tile (09310) Guestrooms - Accessible Bath - Roll-In Shower, Shower Stall Tile Grout (09310) Guestrooms - Accessible Bath - Roll-In Shower, Shower Stall	Manufacturer: Dal-Tile Corp. Product: Ceramic Tile Keytone Model: Porcelain Color: D333 Size (HxWxD): 24" x 24" Contact: Jeff Deam 301.506.3081
	Tile Grout (09310) Guestrooms - Accessible Bath - Roll-In Shower, Shower Stall	Manufacturer: Laticrete International, Inc. Product: Laticrete Color: 39 Mushroom Nick Maczino 800 243 4788 x 602
112	Epoxy Floor Lobby, Break Room, Food Prep, Housekeeping, Guest Laundry, Employee Toilet, Linen Storage, Storage (typ)	Manufacturer: The Shield Chemical Company, An RPM Company Product: Epoxyony Tuffone DBS Model: Tuff Color: Kahl Fleming 410.374.1660
114	PVC Threshold (09650) Guestrooms - Entry PVC Threshold (09650) Guestrooms - Connector Door	Manufacturer: Johnsonite Product: PVC Threshold Model: VT-300-846 Color: Carpet Insert Threshold Moulding Size (HxWxD): 1/4" High Overall x 36" Length Contact: Jim Della Franco 800 899 8916 x 765
	PVC Threshold (09650) Guestrooms - Connector Door	Manufacturer: Johnsonite Product: PVC Threshold Model: VT-300-842 Color: Carpet Insert Threshold Moulding Size (HxWxD): 1/2" High Overall x 36" Length Contact: Jim Della Franco 800 899 8916 x 765
115	Transition Strip (09650) Back of House Space, Guestrooms, Public Space, (All Carpet/Tile Transitions)	Manufacturer: Schluter Systems Product: Solotex-M Model: Brass Color: See spec drawings. Contact: Kevin Vaughn 800.472.4358 x 107

FLOOR FINISH #	MATERIAL	DESCRIPTION
116	Not used	
117	Floor Mats Foyer	Manufacturer: C/S Group Product: Polimat Model: Saphire Color: Saphire Size (HxWxD): 770 740 0050 x 203 Contact: Steve Newhart 800.233.8470
118	Floor Mats (12480) Foyer - Entry	Manufacturer: The Matworks Product: Walk-Off Logo Mat Model: Milage Black Rubber Color: See Comments Size (HxWxD): Field: Diamond Mat II Edge Liner: Universal Diamond Mat II Channel Technical Assistance: 410.792.8733
119-199	Not used	

BASE FINISH #	MATERIAL	DESCRIPTION
200	Tile (09310) Breakfast Room - Buffet, Elevator Lobby (1st floor only), Lobby, Foyer, Public Restrooms, Vending, Vending	Manufacturer: Ceramic Technics Product: Ceramic Model: Cooperative Stoneware Color: Classic Crema Size (HxWxD): 12" x 12" Surface Bullnose Flat Bottom Base Contact: Gerry King 770 740 0050 x 203
	Tile Grout (09310) Breakfast Room - Buffet, Elevator Lobby (1st floor only), Lobby, Foyer, Public Restrooms, Vending, Vending	Manufacturer: Laticrete International, Inc. Product: Laticrete Color: 85 Almond Field Nick Maczino 800 243 4788 x 602
	Tile (09310) Breakfast Room - Fireplace, Lobby - Fireplace	Manufacturer: Ceramic Technics Product: Ceramic Model: Cooperative Stoneware Color: Classic Crema Size (HxWxD): 8" X 8" Contact: Gerry King 770 740 0050 x 203
	Tile Grout (09310) Breakfast Room - Fireplace, Lobby - Fireplace	Manufacturer: Laticrete International, Inc. Product: Laticrete Color: 85 Almond Field Nick Maczino 800 243 4788 x 602
201	Not used	
202	Resilient Base (09650) Registration Desk-Rear, Work Area, Office, Storage (typ), Guest Laundry, Linen Storage, Exercise Room, Elevator Equipment Room, Mechanical Room, Electrical Room, Electrical Closet, Stairwell, Maintenance, Water Rm., Food Equipment, Lifeguard, Food Prep, Guest Laundry, Break Rm., Housekeeping, TV Tel. Employee Toilet.	Manufacturer: IPC / InPro Corporation Product: Cove Model: CB4125VR-0017 Color: Belg Size (HxWxD): 4" Contact: Jimmy Procan 800.543.1729 x 183

BASE FINISH #	MATERIAL	DESCRIPTION
203	Tile (09310) Guestrooms - Bath, Guestrooms - Walk-in Shower, Guestrooms - Bath, Guestrooms - Bath	Manufacturer: Crossville Ceramic Co. Product: Ceramic Model: A310 Cove Base Color: Bamboo Finish: Unpolished Size (HxWxD): 8" X 8" Contact: Nancy Wyatt 931 484 2110
	Tile Grout (09310) Guestrooms - Bath, Guestrooms - Walk-in Shower, Guestrooms - Bath, Guestrooms - Bath	Manufacturer: Laticrete International, Inc. Product: Laticrete Color: 39 Mushroom Nick Maczino 800 243 4788 x 602
203-209	Not used	
210 LM-002B BR-002B	Carpet Base (09680) Breakfast Room, Lobby	Specification provided by Marriot Manufacturer: Transpexion Carpet Mills. Material ID # 100915 Color: Green
211 BL-002B PG-002B	Carpet Base (09680) Lobby, Registration Desk, Access Wall, Corridor	Manufacturer: Shaw Industries, Inc. Material ID # 96300 Color: Green
212	Not used	
213 002B	Carpet Base (09680) Lobby, Registration Desk, Access Wall	Specification provided by Marriot Manufacturer: Shaw Industries, Inc. Material ID # 12538 Color: Tan, Black, Grey & Brown
214	Stair (09900) Breakfast Room - Fireplace Walls, Bar & Colonnade, Business Library - Half Height Walls, Lobby - Colonnade, Fireplace Walls & Half Height Walls	Finish: Marsh Wilmet 71227-07 Size (HxWxD): 4" Height Continuous Wood Base
215	McLanahan (06400) Lobby - Registration Desk - Front, Business Library - Credenza	Finish: Black Matte Comments: 4" Height Continuous Base

BASE FINISH #	MATERIAL	DESCRIPTION
216 X-002B	Carpet Base (09680) Guestrooms - Guestroom	Specification provided by Marriot Manufacturer: Shaw Industries, Inc. Material ID # 100184 Color: Green
217	Tile (09310) Guestrooms - Accessible Bath - Roll-In Shower, Guestrooms - Walk-in Shower, Shower Stall Tile Grout (09310) Guestrooms - Accessible Bath - Roll-In Shower, Guestrooms - Walk-in Shower, Shower Stall	Manufacturer: Crossville Ceramic Co. Product: A-Cove Base Model: Sahara Stone Color: Unpolished Size (HxWxD): 8" X 8" Contact: Nancy Wyatt 931 484 2110
	Tile Grout (09310) Guestrooms - Accessible Bath - Roll-In Shower, Guestrooms - Walk-in Shower, Shower Stall	Manufacturer: Laticrete International, Inc. Product: Laticrete Color: 39 Mushroom Nick Maczino 800 243 4788 x 602

Fairfield Inn & Suites, Palm Coast
Interior Finish Index
Public Spaces / Guestrooms
Generation: 3 - June 30, 2006

- Note:
- Any numbers not shown are assumed not used.
 - Provide fire rated plastic laminate materials where required by code and indicated on drawings.
 - All Carpet Class A Flame Spread
 - Indicates optional finish

Wall, Ceiling, Elevator Finishes:

WALL FINISH #	MATERIAL	DESCRIPTION
300	Wall Covering (09950) <i>Breakfast Room, Business Library, Elevator Lobby, Guestroom Corridor, Lobby - Half Height Walls - First meeting volume, Public Restrooms, Vestibule, Foyer</i>	Manufacturer: U.S. Vinyl Manufacturing Corp. Product: Vinyl Wallcovering Color: Earth Sage Pattern: YS-304025A Size (HxWxD): 54" Wx60" H Weight: 21 oz. FSL: Class A - ASTM E84 Contact: Carolyn Kilborn Phone: 410.268.8745
301A	Plastic Laminate (06400) <i>Guestroom - Closet Door, half height Wall Cap, Plant Shelf, Pantry shelf and counter, Guestroom Wall by shelf and counter, All Dairy opening over Guest Corridor, Public Space Doors, Guestroom Entry Doors.</i>	Manufacturer: WilsonArt International, Inc. Product: WilsonArt Southern Mahogany Color: Contact: Tom Bost Phone: 254.207.3126
302A	Granite <i>Breakfast Room - bar top, buffet counter and backspash, Business Library - reception top, Guestroom Bath - vanity top, Registration Desk counter.</i>	Manufacturer: Rocella Stone, Inc. Product: Crystalomax Finish: Polished Color: Divo Ansel Contact: Divo Ansel Phone: 570.650.0196
303	Stained Millwork (09900) <i>Breakfast Room - fireplace, bar cabinet, bar front, Business Library - built-in credenza, Guestroom plant shelf (chair rail), half height wall (chair rail), Registration Desk raised panel, Fireplace - raised panel.</i>	Comments: Vendor stained to match Formica Cherry Block 7444-58. (See Contract Drawings for Locations) Manufacturer: WilsonArt International, Inc. Product: WilsonArt Southern Mahogany Color: Contact: Tom Bost Phone: 254.207.3126

WALL FINISH #	MATERIAL	DESCRIPTION
303A	Stained Millwork (09900) <i>Breakfast Room - cabinet work walls (crown molding), Juice bar, buffet & bar front reveals, Business Library - credenza & walls (crown molding), built-in credenza (crown), Guestroom-plant shelf (chair rail), half height wall (chair rail), Lobby - counter walls (crown molding), Registration Desk (crown), Fireplace (crown).</i>	Comments: Vendor stained to match WilsonArt Southern Mahogany 10443-7 (See Contract Drawings for Locations) Manufacturer: WilsonArt International, Inc. Product: WilsonArt Southern Mahogany Color: Contact: Tom Bost Phone: 254.207.3126
304	Plastic Laminate (06400) <i>Break Room - counter and cabinet, Food Prep - buffet counter & cabinet, Office - Work surface</i>	Manufacturer: Lantia-Art Product: Plus Paperform Color: 229-7 Pattern: Annalee White Contact: Annalee White Phone: 410.583.4312
305	Paint (09900) <i>Back of House - Interior doors & door frames, Electrical Room, Employee Breakroom, Food Prep and Guest Laundry, Laundry Room, Linen Storage, Maintenance Room, Mechanical Room, Pool Equipment Room, Storage (typ), Guestroom - door frames, Public Space - Door Frames, Staff Handrails, Employee Tables, TV/Tel, Electrical Chases, Water, Fire, Escalating</i>	Manufacturer: Sherwin-Williams Co. Product: Paper Luster #SW1360 Color: Seal-Gloss Contact: Rick May Phone: 610.647.9115 x 102
306	Wall Covering (09950) <i>Guestroom - Bath - Overstaircase - Bath.</i>	Manufacturer: U.S. Vinyl Manufacturing Corp. Product: Vinyl Wallcovering Color: Grey King Pattern: Material ID # 100956 Size (HxWxD): 54" Wx60" H Weight: 15 oz. FSL: Class A - ASTM E84 Contact: Carolyn Kilborn Phone: 410.268.8745

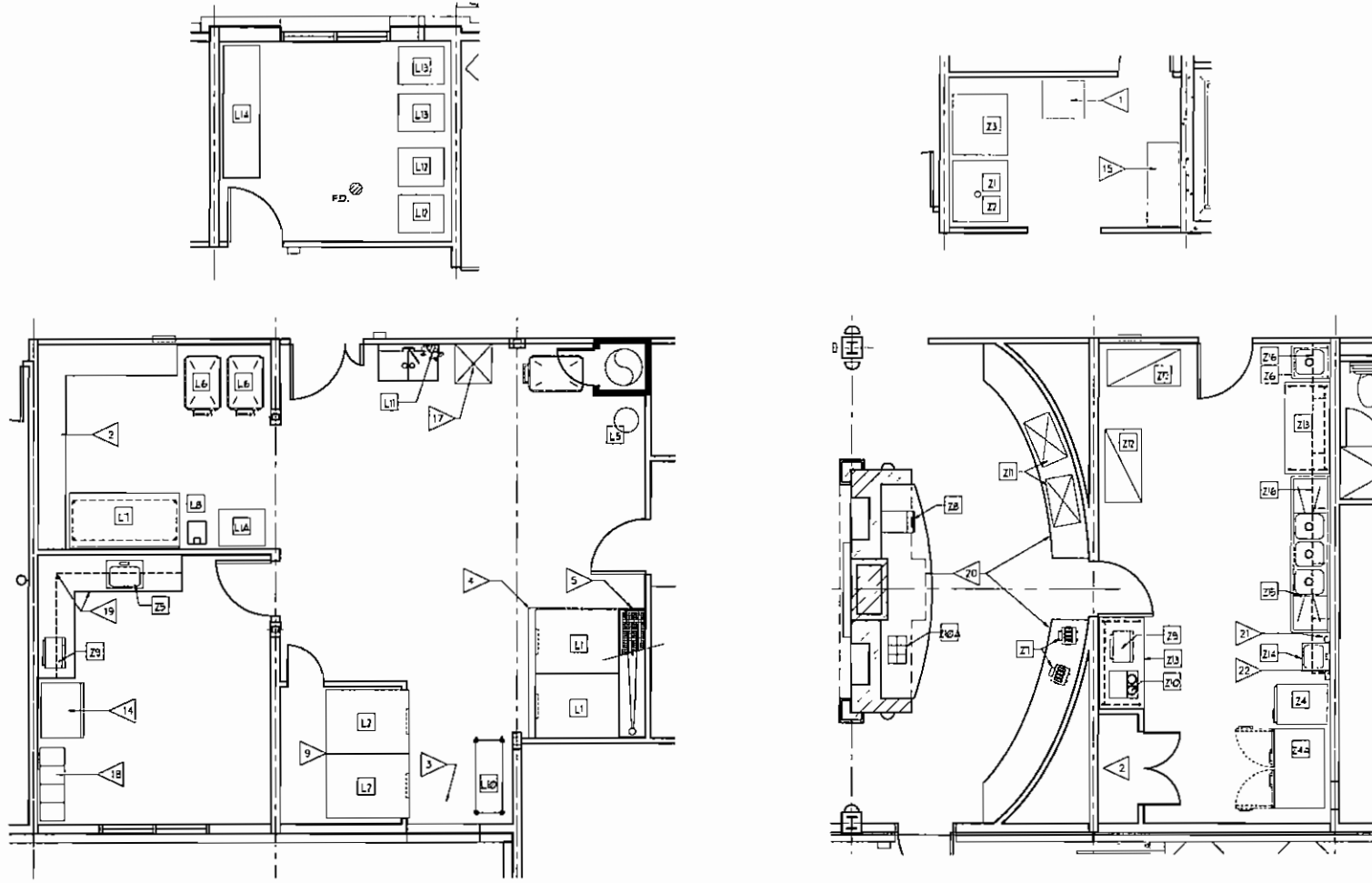
WALL FINISH #	MATERIAL	DESCRIPTION
307-309	Not used	
310	Texture Coating (09245) <i>Study, Guestroom Walls.</i>	Manufacturer: U.S. Vinyl Manufacturing Corp. Product: Sorona-Tex Acrylic Wall Coating Color: Brown Flash Pattern: 2-Cast System FSL: Class A-ASTM E84 Comments: Not acceptable on Registration Wall (see finish 311), Half-Height Over Bed (see finish 311) or Floating Soffit (see finish 311). THIS ITEM FOR MILDEW RESISTANCE ONLY, refer to Design Guide Project Manual Section for specifications. Contact: Carolyn Kilborn Phone: 410.268.8745
311	Paint (09900) <i>Study, Guestroom Walls.</i>	Manufacturer: Sherwin-Williams Co. Product: Paper Luster #SW1360 Color: Seal-Gloss Contact: Rick May Phone: 610.647.9115 x 102
310A	Not used	
311	Paint (09900) <i>Study, Guestroom Walls.</i>	Manufacturer: Sherwin-Williams Co. Product: Paper Luster #SW1360 Color: Seal-Gloss Contact: Rick May Phone: 610.647.9115 x 102
312	Wall Covering (09950) <i>Overstaircase - Column to Ceiling - Half Height Wall (Back Side) - Entertainment Wall / Closet Front</i>	Manufacturer: U.S. Vinyl Manufacturing Corp. Product: Vinyl Wallcovering Color: Grey King Pattern: Material ID # 101165 Size (HxWxD): 54" Wx60" H Weight: 15 oz. FSL: Class A - ASTM E84 Contact: Carolyn Kilborn Phone: 410.268.8745 Optional Upgrade

WALL FINISH #	MATERIAL	DESCRIPTION
313	Corona Quartz (10260) <i>Breakfast Room - Guestroom Corridor</i>	Manufacturer: IPC / InPro Corporation Product: 90 Degrees Model: 119027 Color: Paper Luster #6220 Finish: Textured Size (HxWxD): Textured Comments: 1-1/2" x 1-1/2" x 9/16" (full height above base) Contact: Jerry Frazon Phone: 800.543.1729 x 183
314	Not used	
315	Corona Quartz (10260) <i>Guestroom, Guestroom - Bath</i>	Manufacturer: IPC / InPro Corporation Product: 90 Degrees Model: 3496N Color: Paper Luster #6220 Finish: Textured Size (HxWxD): Textured Comments: 3/4" x 3/4" x 9/16" (full height above base) Contact: Jerry Frazon Phone: 800.543.1729 x 183
316	Corona Quartz (10260) <i>Guestroom - Entertainment Wall</i>	Manufacturer: IPC / InPro Corporation Product: 90 Degrees Model: 119027 Color: Paper Luster #6220 Finish: Textured Size (HxWxD): Textured Comments: 3/4" x 3/4" x 9/16" (full height above base & chair rail) Contact: Jerry Frazon Phone: 800.543.1729 x 183
321	Tile (09310) <i>Guestroom - Acc. Bath w/ roll-in Shower, Guestroom #Bathroom - Bath and Shower Stall.</i>	Manufacturer: Ceramic Tile Ceramic Co. Product: Corona Color: Sahara Dune Finish: Unpolished Pattern: Unpolished Size (HxWxD): 4" x 4" x 3/16" Contact: Nancy Wyatt Phone: 931.484.2110
322	Tile (09310) <i>Guestroom - Acc. Bath w/ roll-in Shower, Guestroom #Bathroom - Bath and Shower Stall.</i>	Manufacturer: Ceramic Tile Ceramic Co. Product: Corona Color: Sahara Dune Finish: Unpolished Pattern: Unpolished Size (HxWxD): 4" x 4" x 3/16" Contact: Nancy Wyatt Phone: 931.484.2110
323	Tile (09310) <i>Guestroom - Acc. Bath w/ roll-in Shower, Guestroom #Bathroom - Bath and Shower Stall.</i>	Manufacturer: Ceramic Tile Ceramic Co. Product: Corona Color: Sahara Dune Finish: Unpolished Pattern: Unpolished Size (HxWxD): 4" x 4" x 3/16" Contact: Nancy Wyatt Phone: 931.484.2110

FLOOR FINISH #	MATERIAL	DESCRIPTION
321A	Tile (09310) <i>Guestroom - Acc. Bath w/ roll-in Shower, Guestroom #Bathroom - Bath and Shower Stall.</i>	Manufacturer: Ceramic Tile Ceramic Co. Product: Corona Color: Sahara Dune Finish: Unpolished Pattern: Unpolished Size (HxWxD): 4" x 4" x 3/16" Contact: Nancy Wyatt Phone: 931.484.2110
321B	Tile (09310) <i>Guestroom - Acc. Bath w/ roll-in Shower, Guestroom #Bathroom - Bath and Shower Stall.</i>	Manufacturer: Ceramic Tile Ceramic Co. Product: Corona Color: Sahara Dune Finish: Unpolished Pattern: Unpolished Size (HxWxD): 4" x 4" x 3/16" Contact: Nancy Wyatt Phone: 931.484.2110
321C	Tile (09310) <i>Guestroom - Acc. Bath w/ roll-in Shower, Guestroom #Bathroom - Bath and Shower Stall.</i>	Manufacturer: Ceramic Tile Ceramic Co. Product: Corona Color: Sahara Dune Finish: Unpolished Pattern: Unpolished Size (HxWxD): 4" x 4" x 3/16" Contact: Nancy Wyatt Phone: 931.484.2110
324	Tile (09310) <i>Pool - Waterline</i>	Manufacturer: Dal-Tile Corp. Product: Omega Color: Mosaic M3 Finish: 6669 Gloss Galaxy Pattern: Perimeter Size (HxWxD): 2" x 2" x 3/16" Contact: Jeff Sams Phone: 301.506.3081
325	Tile (09310) <i>Pool - Waterline</i>	Manufacturer: Dal-Tile Corp. Product: Omega Color: Mosaic M3 Finish: 6669 Gloss Galaxy Pattern: Perimeter Size (HxWxD): 2" x 2" x 3/16" Contact: Jeff Sams Phone: 301.506.3081

WALL FINISH #	MATERIAL	DESCRIPTION
327	Plastic Laminate (06200) <i>Bath and Overstair Doors</i>	Manufacturer: Nevamar, Div. of International Paper Co. Product: S-3-JT Champagne Color: S-3-JT Champagne Contact: Technical Resources Phone: 800.364.0778 x 7551
328	Wall Covering (09950) <i>Breakfast Room - Fronted Backdrop to Armoire Guest Above Buffet Only Business Library - Credenza Wall, Lobby - Registration Desk - Rear Wall</i>	Manufacturer: U.S. Vinyl Manufacturing Corp. Product: Vinyl Wallcovering Color: Earth Sage Pattern: YS-304025A Size (HxWxD): 54" Wx60" H Weight: 21 oz. FSL: Class A - ASTM E84 Contact: Carolyn Kilborn Phone: 410.268.8745
329	Cast Polymer (06610) <i>All Window Sills @ Back of House Spaces, Guestroom and Public Spaces</i>	Manufacturer: Intarsol, Inc. Product: Cast Polymer Color: Glacier White Finish: Matte Thickness: 1/2" Comments: Semi Sealed; Silicone White Don Svbards Contact: Intarsol, Inc. Phone: 478.987.3185 x 223
330	Tile (09310) <i>Guestroom - #Bathroom - Tub Wall cap.</i>	Manufacturer: Ceramic Technika Product: Ceramic Color: Satin Matte Finish: Marbleized Pattern: Beveled Border Profile Size (HxWxD): 8" x 8" x 3/16" Contact: Grey King Phone: 770.740.0050 x 203
331	Tile (09310) <i>Guestroom - #Bathroom - Tub Wall cap.</i>	Manufacturer: Ceramic Technika Product: Ceramic Color: Satin Matte Finish: Marbleized Pattern: Beveled Border Profile Size (HxWxD): 8" x 8" x 3/16" Contact: Grey King Phone: 770.740.0050 x 203

WALL FINISH #	MATERIAL	DESCRIPTION
331	Tile (09310) <i>Fireplace Hearth</i>	Manufacturer: Ceramic Technika Product: Ceramic Color: Cooperative Strawweave Pattern: Classic Crema Size (HxWxD): 8" x 8" x 3/16" Contact: Grey King Phone: 770.740.0050 x 203
332	Tile (09310) <i>Fireplace Hearth</i>	Manufacturer: Ceramic Technika Product: Ceramic Color: Classic Crema Pattern: Classic Crema Size (HxWxD): 8" x 8" x 3/16" Contact: Grey King Phone: 770.740.0050 x 203
332	Tile (09310) <i>Fireplace Hearth</i>	Manufacturer: Ceramic Technika Product: Ceramic Color: Classic Crema Pattern: Classic Crema Size (HxWxD): 8" x 8" x 3/16" Contact: Grey King Phone: 770.740.0050 x 203
332	Tile (09310) <i>Fireplace Hearth</i>	Manufacturer: Ceramic Technika Product: Ceramic Color: Classic Crema Pattern: Classic Crema Size (HxWxD): 8" x 8" x 3/16" Contact: Grey King Phone: 770.740.0050 x 203
332	Tile (09310) <i>Fireplace Hearth</i>	Manufacturer: Ceramic Technika Product: Ceramic Color: Classic Crema Pattern: Classic Crema Size (HxWxD): 8" x 8" x 3/16" Contact: Grey King Phone: 770.740.0050 x 203
332	Tile (09310) <i>Fireplace Hearth</i>	Manufacturer: Ceramic Technika Product: Ceramic Color: Classic Crema Pattern: Classic Crema Size (HxWxD): 8" x 8" x 3/16" Contact: Grey King Phone: 770.740.0050 x 203
332	Tile (09310) <i>Fireplace Hearth</i>	Manufacturer: Ceramic Technika Product: Ceramic Color: Classic Crema Pattern: Classic Crema Size (HxWxD): 8" x 8" x 3/16" Contact: Grey King Phone: 770.740.0050 x 203
332	Tile (09310) <i>Fireplace Hearth</i>	Manufacturer: Ceramic Technika Product: Ceramic Color: Classic Crema Pattern: Classic Crema Size (HxWxD): 8" x 8" x 3/16" Contact: Grey King Phone: 770.740.0050 x 203
332	Tile (09310) <i>Fireplace Hearth</i>	Manufacturer: Ceramic Technika Product: Ceramic Color: Classic Crema Pattern: Classic Crema Size (HxWxD): 8" x 8" x 3/16" Contact: Grey King Phone: 770.740.0050 x 203
332	Tile (09310) <i>Fireplace Hearth</i>	Manufacturer: Ceramic Technika Product: Ceramic Color: Classic Crema Pattern: Classic Crema Size (HxWxD): 8" x 8" x 3/16" Contact: Grey King Phone: 770.740.0050 x 203
332	Tile (09310) <i>Fireplace Hearth</i>	Manufacturer: Ceramic Technika Product: Ceramic Color: Classic Crema Pattern: Classic Crema Size (HxWxD): 8" x 8" x 3/16" Contact: Grey King Phone: 770.740.0050 x 203
332	Tile (09310) <i>Fireplace Hearth</i>	Manufacturer: Ceramic Technika Product: Ceramic Color: Classic Crema Pattern: Classic Crema Size (HxWxD): 8" x 8" x 3/16" Contact: Grey King Phone: 770.740.0050 x 203
332	Tile (09310) <i>Fireplace Hearth</i>	Manufacturer: Ceramic Technika Product: Ceramic Color: Classic Crema Pattern: Classic Crema Size (HxWxD): 8" x 8" x 3/16" Contact: Grey King Phone: 770.740.0050 x 203
332	Tile (09310) <i>Fireplace Hearth</i>	Manufacturer: Ceramic Technika Product: Ceramic Color: Classic Crema Pattern: Classic Crema Size (HxWxD): 8" x 8" x 3/16" Contact: Grey King Phone: 770.740.0050 x 203
332	Tile (09310) <i>Fireplace Hearth</i>	Manufacturer: Ceramic Technika Product: Ceramic Color: Classic Crema Pattern: Classic Crema Size (HxWxD): 8" x 8" x 3/16" Contact: Grey King Phone: 770.740.0050 x 203
332	Tile (09310) <i>Fireplace Hearth</i>	Manufacturer: Ceramic Technika Product: Ceramic Color: Classic Crema Pattern: Classic Crema Size (HxWxD): 8" x 8" x 3/16" Contact: Grey King Phone: 770.740.0050 x 203
332	Tile (09310) <i>Fireplace Hearth</i>	Manufacturer: Ceramic Technika Product: Ceramic Color: Classic Crema Pattern: Classic Crema Size (HxWxD): 8" x 8" x 3/16" Contact: Grey King Phone: 770.740.0050 x 203
332	Tile (09310) <i>Fireplace Hearth</i>	Manufacturer: Ceramic Technika Product: Ceramic Color: Classic Crema Pattern: Classic Crema Size (HxWxD): 8" x 8" x 3/16" Contact: Grey King Phone: 770.740.0050 x 203
332	Tile (09310) <i>Fireplace Hearth</i>	Manufacturer: Ceramic Technika Product: Ceramic Color: Classic Crema Pattern: Classic Crema Size (HxWxD): 8" x 8" x 3/16" Contact: Grey King Phone: 770.740.0050 x 203
332	Tile (09310) <i>Fireplace Hearth</i>	Manufacturer: Ceramic Technika Product: Ceramic Color: Classic Crema Pattern: Classic Crema Size (HxWxD): 8" x 8" x 3/16" Contact: Grey King Phone: 770.740.0050 x 203
332	Tile (09310) <i>Fireplace Hearth</i>	Manufacturer: Ceramic Technika Product: Ceramic Color: Classic Crema Pattern: Classic Crema Size (HxWxD): 8" x 8" x 3/16" Contact: Grey King Phone: 770.740.0050 x 203
332	Tile (09310) <i>Fireplace Hearth</i>	Manufacturer: Ceramic Technika Product: Ceramic Color: Classic Crema Pattern: Classic Crema Size (HxWxD): 8" x 8" x 3/16" Contact: Grey King Phone: 770.740.0050 x 203
332	Tile (09310) <i>Fireplace Hearth</i>	Manufacturer: Ceramic Technika Product: Ceramic Color: Classic Crema Pattern: Classic Crema Size (HxWxD): 8" x 8" x 3/16" Contact: Grey King Phone: 770.740.0050 x 203
332	Tile (09310) <i>Fireplace Hearth</i>	Manufacturer: Ceramic Technika Product: Ceramic Color: Classic Crema Pattern: Classic Crema Size (HxWxD): 8" x 8" x 3/16" Contact: Grey King Phone: 770.740.0050 x 203
332	Tile (09310) <i>Fireplace Hearth</i>	Manufacturer: Ceramic Technika Product: Ceramic Color: Classic Crema Pattern: Classic Crema Size (HxWxD): 8" x 8" x 3/16" Contact: Grey King Phone: 770.740.0050 x 203
332	Tile (09310) <i>Fireplace Hearth</i>	Manufacturer: Ceramic Technika Product: Ceramic Color: Classic Crema Pattern: Classic Crema Size (HxWxD): 8" x 8" x 3/16" Contact: Grey King Phone: 770.740.0050 x 203
332	Tile (09310) <i>Fireplace Hearth</i>	Manufacturer: Ceramic Technika Product: Ceramic Color: Classic Crema Pattern: Classic Crema Size (HxWxD): 8" x 8" x 3/16" Contact: Grey King Phone: 770.740.0050 x 203
332	Tile (09310) <i>Fireplace Hearth</i>	Manufacturer: Ceramic Technika Product: Ceramic Color: Classic Crema Pattern: Classic Crema Size (HxWxD): 8" x 8" x 3/16" Contact: Grey King Phone: 770.740.0050 x 203
332	Tile (09310) <i>Fireplace Hearth</i>	Manufacturer: Ceramic Technika Product: Ceramic Color: Classic Crema Pattern: Classic Crema Size (HxWxD): 8" x 8" x 3/16" Contact: Grey King Phone: 770.740.0050 x 203
332	Tile (09310) <i>Fireplace Hearth</i>	Manufacturer: Ceramic Technika Product: Ceramic Color: Classic Crema Pattern: Classic Crema Size (HxWxD): 8" x 8" x 3/16" Contact: Grey King Phone: 770.740.0050 x 203
332	Tile (09310) <i>Fireplace Hearth</i>	Manufacturer: Ceramic Technika Product: Ceramic Color: Classic Crema Pattern: Classic Crema Size (HxWxD): 8" x 8" x 3/16" Contact: Grey King Phone: 770.740.0050 x 203
332	Tile (09310) <i>Fireplace Hearth</i>	Manufacturer: Ceramic Technika Product: Ceramic Color: Classic Crema Pattern: Classic Crema Size (HxWxD): 8" x 8" x 3/16" Contact: Grey King Phone: 770.740.0050 x 203
332	Tile (09310) <i>Fireplace Hearth</i>	Manufacturer: Ceramic Technika Product: Ceramic Color: Classic Crema Pattern: Classic Crema Size (HxWxD): 8" x 8" x 3/16" Contact: Grey King Phone: 770.740.0050 x 203
332	Tile (09310) <i>Fireplace Hearth</i>	Manufacturer: Ceramic Technika Product: Ceramic Color: Classic Crema Pattern: Classic Crema Size (HxWxD): 8" x 8" x 3/16" Contact: Grey King Phone: 770.740.0050 x 203
332	Tile (09310) <i>Fireplace Hearth</i>	Manufacturer: Ceramic Technika Product: Ceramic Color: Classic Crema Pattern: Classic Crema Size (HxWxD): 8" x 8" x 3/16" Contact: Grey King Phone: 770.740.0050 x 203
332	Tile (09310) <i>Fireplace Hearth</i>	Manufacturer: Ceramic Technika Product: Ceramic Color: Classic Crema Pattern: Classic Crema Size (HxWxD): 8" x 8" x 3/16" Contact: Grey King Phone: 770.740.0050 x 203
332	Tile (09310) <i>Fireplace Hearth</i>	Manufacturer: Ceramic Technika Product: Ceramic Color: Classic Crema Pattern: Classic Crema Size (HxWxD): 8" x 8" x 3/16" Contact: Grey King Phone: 770.740.0050 x 203
332	Tile (09310) <i>Fireplace Hearth</i>	Manufacturer: Ceramic Technika Product: Ceramic Color: Classic Crema Pattern: Classic Crema Size (HxWxD): 8" x 8" x 3/16" Contact: Grey King Phone: 770.740.0050 x 203
332	Tile (09310) <i>Fireplace Hearth</i>	Manufacturer: Ceramic Technika Product: Ceramic Color: Classic Crema Pattern: Classic Crema Size (HxWxD): 8" x 8" x 3/16" Contact: Grey King Phone: 770.740.0050 x 203
332	Tile (09310) <i>Fireplace Hearth</i>	Manufacturer: Ceramic Technika Product: Ceramic Color: Classic Crema Pattern: Classic Crema Size (HxWxD): 8" x 8" x 3/16" Contact: Grey King Phone: 770.740.0050 x 203
332	Tile (09310) <i>Fireplace Hearth</i>	Manufacturer: Ceramic Technika Product: Ceramic Color: Classic Crema Pattern: Classic Crema Size (HxWxD): 8" x 8" x 3/16" Contact: Grey King Phone: 770.740.0050 x 203
332	Tile (09310) <i>Fireplace Hearth</i>	Manufacturer: Ceramic Technika Product: Ceramic Color: Classic Crema Pattern: Classic Crema Size (HxWxD): 8" x 8" x 3/16" Contact: Grey King Phone: 770.740.0050 x 203
332	Tile (09310) <i>Fireplace Hearth</i>	Manufacturer: Ceramic Technika Product: Ceramic Color: Classic Crema Pattern: Classic Crema Size (HxWxD): 8" x 8" x 3/16" Contact: Grey King Phone: 770.740.0050 x 203
332	Tile (09310) <i>Fireplace Hearth</i>	Manufacturer: Ceramic Technika Product: Ceramic Color: Classic Crema Pattern: Classic Crema Size (HxWxD): 8" x 8" x 3/16" Contact: Grey King Phone: 770.740.0050 x 203
332	Tile (09310) <i>Fireplace Hearth</i>	Manufacturer: Ceramic Technika Product: Ceramic Color: Classic Crema Pattern: Classic Crema Size (HxWxD): 8" x 8" x 3/16" Contact: Grey King Phone: 770.740.0050 x 203
332	Tile (09310) <i>Fireplace Hearth</i>	Manufacturer: Ceramic Technika Product: Ceramic Color: Classic Crema Pattern: Classic Crema Size (HxWxD): 8" x 8" x 3/16" Contact: Grey King Phone: 770.740.0050 x 203
332	Tile (09310) <i>Fireplace Hearth</i>	Manufacturer: Ceramic Technika Product: Ceramic Color: Classic Crema Pattern: Classic Crema Size (HxWxD): 8" x 8" x 3/16" Contact: Grey King Phone: 770.740.0050 x 203
332	Tile (09310) <i>Fireplace Hearth</i>	Manufacturer: Ceramic Technika Product: Ceramic Color: Classic Crema Pattern: Classic Crema Size (HxWxD): 8" x 8" x 3/16" Contact: Grey King Phone: 770.740.0050 x 203
332	Tile (09310) <i>Fireplace Hearth</i>	Manufacturer: Ceramic Technika Product: Ceramic Color: Classic Crema Pattern: Classic Crema Size (HxWxD): 8" x 8" x 3/16" Contact: Grey King Phone: 770.740.0050 x 203
332	Tile (09310) <i>Fireplace Hearth</i>	Manufacturer: Ceramic Technika Product: Ceramic Color: Classic Crema Pattern: Classic Crema Size (HxWxD): 8" x 8" x 3/16" Contact: Grey King Phone: 770.740.0050 x 203
332	Tile (09310) <i>Fireplace Hearth</i>	Manufacturer: Ceramic Technika Product: Ceramic Color: Classic Crema Pattern: Classic Crema Size (HxWxD): 8" x 8" x 3/16" Contact: Grey King Phone: 770.740.0050 x 203
332	Tile (09310) <i>Fireplace Hearth</i>	Manufacturer: Ceramic Technika Product: Ceramic Color: Classic Crema Pattern: Classic Crema Size (HxWxD): 8" x 8" x 3/16" Contact: Grey King Phone: 770.740.0050 x 203
332	Tile (09310) <i>Fireplace Hearth</i>	Manufacturer: Ceramic Technika Product: Ceramic Color: Classic Crema Pattern: Classic Crema Size (HxWxD): 8" x 8" x 3/16" Contact: Grey King Phone: 770.740.0050 x 203
332	Tile (09310) <i>Fireplace Hearth</i>	Manufacturer: Ceramic Technika Product: Ceramic Color: Classic Crema Pattern: Classic Crema Size (HxWxD): 8" x 8" x 3/16" Contact: Grey King Phone: 770.740.0050 x 203
332	Tile (09310) <i>Fireplace Hearth</i>	Manufacturer: Ceramic Technika Product: Ceramic Color: Classic Crema Pattern: Classic Crema Size (HxWxD): 8" x 8" x 3/16" Contact: Grey King Phone: 770.740.0050 x 203
332	Tile (09310) <i>Fireplace Hearth</i>	Manufacturer: Ceramic Technika Product: Ceramic Color: Classic Crema Pattern: Classic Crema Size (HxWxD): 8" x 8" x 3/16" Contact: Grey King Phone: 770.740.0050 x 203
332	Tile (09310) <i>Fireplace Hearth</i>	Manufacturer: Ceramic Technika Product: Ceramic Color: Classic Crema Pattern: Classic Crema Size (HxWxD): 8" x 8" x 3/16" Contact: Grey King Phone: 770.740.0050 x 203
332	Tile (09310) <i>Fireplace Hearth</i>	Manufacturer: Ceramic Technika Product: Ceramic Color: Classic Crema Pattern: Classic Crema Size (HxWxD): 8" x 8" x 3/16" Contact: Grey King Phone: 770.740.0050 x 203
332	Tile (09310) <i>Fireplace Hearth</i>	Manufacturer: Ceramic Technika Product: Ceramic Color: Classic Crema Pattern: Classic Crema Size (HxWxD): 8" x 8" x 3/16" Contact: Grey King Phone: 770.740.0050 x 203
332	Tile (09310) <i>Fireplace Hearth</i>	Manufacturer: Ceramic Technika Product: Ceramic Color: Classic Crema Pattern: Classic Crema Size (HxWxD): 8" x 8" x 3/16" Contact: Grey King Phone: 770.740.0050 x 203
332	Tile (09310) <i>Fireplace Hearth</i>	Manufacturer: Ceramic Technika Product: Ceramic Color: Classic Crema Pattern: Classic Crema Size (HxWxD): 8" x 8" x 3/16" Contact: Grey King Phone: 770.740.0050 x 203
332	Tile (09310) <i>Fireplace Hearth</i>	Manufacturer: Ceramic Technika Product: Ceramic Color: Classic Crema Pattern: Classic Crema Size (HxWxD): 8" x 8" x 3/16" Contact: Grey King Phone: 770.740.0050 x 203
332	Tile (09310) <i>Fireplace Hearth</i>	Manufacturer: Ceramic Technika Product: Ceramic Color: Classic Crema Pattern: Classic Crema Size (HxWxD): 8" x 8" x 3/16" Contact: Grey King Phone: 770.740.0050 x 203
332	Tile (09310) <i>Fireplace Hearth</i>	Manufacturer: Ceramic Technika Product: Ceramic Color: Classic Crema Pattern: Classic Crema Size (HxWxD): 8" x 8" x



1 LAUNDRY EQUIPMENT LAYOUT PLAN (LV) SCALE: 1/4"=1'-0"

2 VENDING & FOOD PREP. PLAN (LV) SCALE: 1/4"=1'-0"

PLUMB & MECH ROUGH-IN NOTES FOR LAUNDRY

1. ALL FINAL CONNECTIONS SHOWN ON THIS DRAWING ARE ACTUAL REQUIREMENTS OF THE EQUIPMENT AND ARE SHOWN IN THEIR APPROPRIATE LOCATION.
2. PLUMBING VENT SIZES AND LOCATIONS ARE TO BE DETERMINED BY THE PLUMBING CONTRACTOR.
3. FLOOR DRAINS SHOWN ARE FOR EQUIPMENT USE AND GENERAL CLEANING PURPOSES AND ARE TO BE OF THE TYPE INDICATED IN SYMBOLS UNLESS OTHERWISE REQUIRED BY LOCAL CODES.
4. STOP VALVES SHALL BE PROVIDED IN ALL PIPING TO KITCHEN AND OTHER EQUIPMENT OR TUBS AHEAD OF OPERATING LEVER HANDLES OF FAUCETS BACK FLOW PREVENTOR SHALL BE ADDED IN ALL PIPING IN LINE BEFORE MIXING VALVES AND/OR MIXING FAUCETS USED ON EQUIPMENT.
5. LOCATION OF ROUGH-IN STUB OR FINAL CONNECTION IS INDICATED AS VOM, WHICH IS THE STUB OUT OR FINAL CONNECTION HEIGHT ABOVE FINISH FLOOR. ANY SERVICE WHICH MUST COME FROM ABOVE CEILING OR UP FROM BELOW THE SLAB SHALL BE INDICATED AS SUCH.
6. ALL DIMENSIONS ARE CUMULATIVE FROM AN ESTABLISHED BUILDING COLUMN LINE OR WALL AS INDICATED.
7. (F) INDICATES A FLEXIBLE GAS LINE WITH QUICK DISCONNECTS FURNISHED AS PART OF THE EQUIPMENT AND INSTALLED IN THE FIELD BY THE PLUMBING CONTRACTOR.
8. WHERE INSECT WASTE (I.W.) ARE NOTED, THE PLUMBING ENGINEER IS TO LOCATE SUCH ITR NEAREST EXTENSION TO FLOOR SAW. INSECT WASTE LINES TO BE RUN IN ACCORDANCE WITH ALL LOCAL CODES.
9. THE PLUMBING ENGINEER SHALL DETERMINE MAIN GAS LINE DROPS, SIZES AND ROUTING TO CONNECTION POINTS THE MAIN GAS LINE FEED, WHEN SHOWN, HAS BEEN COORDINATED WITH ENGINEER'S DRAWINGS.
10. ALL GAS FRIED EQUIPMENT SHALL BE EQUIPPED WITH INDIVIDUAL MANUAL SHUT-OFF VALVES BY PLUMBING CONTRACTOR.
11. PROVIDE WATER PRESSURE REGULATING VALVES IN MAIN LINE FEEDING WASHERS TO LIMIT WATER PRESSURE TO 60 PSI. THE MAXIMUM PRESSURE REQUIRED IS 40 PSI.
12. PROVIDE WATER HAMMER ARRESTORS TO PREVENT WATER HAMMER.
13. HOT WATER TEMPERATURE IS TO BE 160 DEG (MIN) AT THE WASHER INLET IN THE MAIN LAUNDRY. HOT WATER TEMPERATURE IS TO BE 120 DEG (MAX) AT THE WASHER INLET FOR COM-OP WASHER IN THE GUEST LAUNDRY.
14. UTILITY AND GUEST LAUNDRY DRYERS REQUIRE NO LINT COLLECTOR. TYPICAL 4" EXHAUST LINE SHOULD NOT EXCEED 18 FT. USE OF A 6" EXHAUST INCREASES THIS MAXIMUM TO 32 FT. (WITH ONE ELBOW).
15. INSTALL FLEXIBLE CONNECTIONS & VALVES ON ALL LAUNDRY WATER CONNECTIONS.

GENERAL NOTES

1. PRIOR TO COMMENCING WORK, MECHANICAL CONTRACTORS SHALL REQUEST DIMENSIONED EQUIPMENT ROUGH-IN PLAN FROM ARCHITECT.
2. EQUIPMENT FABRICATOR SHALL REFER TO DIVISION 11 OF THE PROJECT MANUAL FOR ADDITIONAL REQUIREMENTS.
3. "ME" ABBREVIATION MEANS "MECHANICAL CONTRACTOR".
4. "K" ABBREVIATION MEANS "KITCHEN EQUIPMENT CONTRACTOR".
5. THE ABBREVIATION SSM MEANS SUPPLIED OR FURNISHED BY OPERATIONS OR OWNER.
6. THE ABBREVIATION NTC MEANS NOT IN KITCHEN AND/OR LAUNDRY EQUIPMENT CONTRACT.
7. THE ABBREVIATION BDC MEANS SPECIFIED BY ARCHITECT AND INTERIOR DESIGNER.

ELECTRICAL ROUGH-IN NOTES FOR LAUNDRY

1. ALL FINAL CONNECTIONS SHOWN ON THIS DRAWING ARE ACTUAL REQUIREMENTS OF THE EQUIPMENT AND ARE SHOWN IN THEIR APPROPRIATE LOCATION.
2. LOCATION OF ROUGH-IN STUB IS INDICATED AT VOM, WHICH IS THE STUB OUT ABOVE THE FINISH FLOOR. ANY SERVICE WHICH MUST COME FROM ABOVE CEILING OR UP FROM BELOW THE SLAB SHALL BE INDICATED AS SUCH.
3. ALL DIMENSIONS ARE CUMULATIVE FROM AN ESTABLISHED BUILDING COLUMN LINE OR WALL AS INDICATED.
4. ELECTRICAL CONTRACTOR TO PROVIDE AND INSTALL ALL SWITCHES, STARTERS, DISCONNECTS, ETC. FOR ALL EQUIPMENT UNLESS NOTED OTHERWISE. ALL DISCONNECTS OR LOCK-OUT DEVICES, STARTERS, ETC. TO MEET N.E.C. AND O.S.H.A. STANDARDS.
5. ALL RECEPTACLES SHALL BE GROUNDED PER N.E.C. AND O.S.H.A. AND TO HAVE GROUND FAULT CIRCUIT INTERRUPTER.

LAUNDRY - VENDING - FOOD PREP. EQUIPMENT SCHEDULE

EQUIPMENT			ELECTRICAL					PLUMBING					EXHAUST			REMARKS						
NO.	QTY.	DESCRIPTION	RESPONSIBLE	BOLT	LEV.	GRT.	VOLT	AMP	HP	CONN.	R.I. HGT.	HU	CU	W	RU		MBTU	R.I. HGT.	DIA	CFM	R.I. HGT.	
L1	1	80" WASHER	OWNER	B	L	G	208/3	76		JB	DN -60"	3/4"	3/4"	2 1/2"				DN -60"				PROVIDE 2 EA. 1/2" WATER LINES FOR EA. MACHINE. OPTIONAL EQUIPMENT (ENVIRO CLEANER)
L1A	1	LAUNDRY SYSTEM	OWNER	B	L		120/1	20		JB	-58"								10"	1000	50" CL.	
L2	2	75" DRYERS	OWNER	B	L		"	"		JB	DN -60"											
L3	1	FOLDING TABLE	OWNER											1/2	1/2	1 1/2						SPECIFIED BY PLUMBING ENGINEER
L4	1	SOAK SINK	G.C.																			
L5	2	FEED TRUCK	OWNER																			
L6	6	UTILITY TRUCK	OWNER																			
L7	1	FOLDING TABLE	OWNER																			
L8	1	SHEET FOLDER	OWNER																			
L9	5	MOBILE SHELVING	OWNER																			
L10	1	CHEM. SUPPLY SYS.	OWNER				120/1	20		ER	-72"											SUPPLIED BY VENDOR. SPECIFIED BY PLUMBING ENGINEER
L11	1	EYEWASH	OWNER									1/2		1 1/4								
L12	1	GUEST WASHER	OWNER				120/1	15	1/2	JB	-36"	1/2	1/2	2								
L13	1	GUEST DRYER	OWNER				120/208	30	1/3	JB	-36"											
L14	1	GUEST FOLDING TABLE	OWNER																			
Z1	5	ICE MAKER	OWNER				120/1	15	3/4	JB	-72"		3/8									
Z2	5	ICE DISPENSER	OWNER				120/1	25		JB	-72"			2								
Z3	5	VENDING MACHINE	OWNER				120/1	20		DR	-48"											SUPPLIED BY VENDOR
Z4	1	REACH-IN FREEZER	OWNER				120/1	19		DR	-80"											
Z4A	1	REACH-IN REFR.	OWNER				120/1	10.0		DR	-80"											
Z5	1	IN-COUNTER SINK	OWNER									1/2	1/2	1/2								
Z6	1	PREP SINK	OWNER									1/2	1/2	1 1/2								
Z7	1	TOASTER	OWNER				120/1	15		DR	-44"											
Z8	1	JUICER	OWNER				120/1	20		DR	-44"											
Z9	1	MICROWAVE OVEN	OWNER				120/1	20		ER	-22"											
Z10	1	COFFEE BREWER (SHUTTLE SYSTEM)	OWNER				120/208	31		JB	-44"		3/8									BY VENDOR
Z10A	1	COFFEE WARMER	OWNER				120/1	1		DR	-44"											BY VENDOR
Z11	2	SNEEZEGUARD	OWNER																			SNEEZE GUARD AS REQ'D BY LOCAL GOVERNING AUTHORITIES
Z12	2	STORAGE SHELF	OWNER																			24" X 48" WIRE SHELVING
Z13	1	WORK TABLE	OWNER											1/2	1/2							30" X 60" STAINLESS STEEL
Z14	1	HAND SINK	G.C.											1/2	1/2	1/2						SPECIFIED BY PLUMBING ENGINEER
Z15	1	3-COMPARTMENT SINK	OWNER											1/2	1/2	2						122" FREE STANDING
Z16	6	WALL SHELVING	OWNER																			36" LONG

** SEE ELECTRICAL DRAWINGS

KEY NOTES:

- 1 NEWS PAPERS
- 2 BUILT-IN SHELVING
- 3 WATER HEATER
- 4 VERIFY SLAB SIZE & DEPTH FOR HEIGHT AND SHOCK OF WASHER
- 5 REMOVABLE GRATE SECTION OVER DRAIN VERIFY REQS. FOR TROUGH WITH PLUMBING ENGINEER
- 6 DRYER VENT SOFFIT ABOVE WITH ACCESS PANELS
- 7 WALL INTAKE LOUVERS BLOCKED AT THIS SIDE
- 8 WALL INTAKE LOUVERS FOR MAKE-UP AIR
- 9 ALLOW 1" CLEARANCE BETWEEN DRYERS WITH 1 1/2" CLEARANCE ABOVE. ERECT ENCLOSURE AFTER DRYERS ARE IN PLACE
- 10 1/2" TO 5/8" TO FACILITATE GROUTING
- 11 PACK GROUTING WELL INSIDE THIMBLE
- 12 THIMBLE
- 13 FLAT WASHER
- 14 FULL HEIGHT REFRIGERATOR
- 15 TOURIST COLLECTION RACK
- 16 VERIFY MOUNTING WITH MANUFACTURER
- 17 POP SINK
- 18 (4) THREE-TIERED 17"x15" LOCKERS WITH SLOPED TOPS, CLOSED BOTTOMS, AND LOUVERED DOORS
- 19 UPPER & LOWER CABINETS
- 20 LOWER CABINETS
- 21 SOAP DISPENSER
- 22 PAPER TOWEL DISPENSER



FAIRFIELD INN & SUITES
PALM COAST, FLORIDA
PROJECT NUMBER: 0811020
SCALE: AS SHOWN

LAUNDRY/VENDING EQUIPMENT SCHEDULE

LV.1

REVISION	DATE	BY	DESCRIPTION	CHECKED	APPROVED