

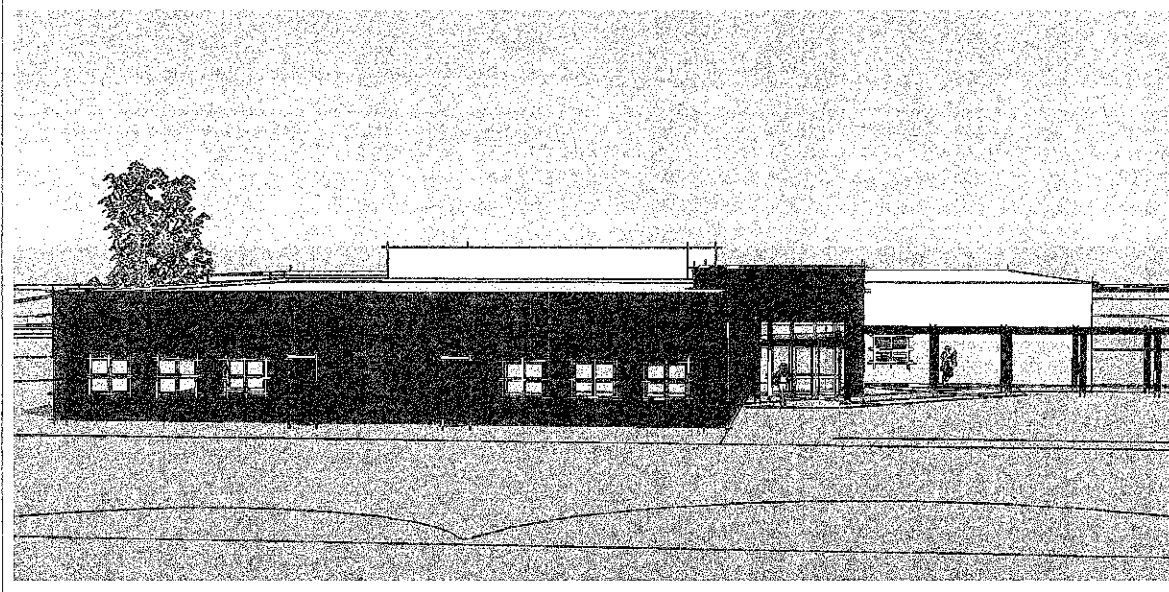


214 Burgess St.
Fayetteville, NC 28301
Phone: 910.484.4989
Fax: 910.484.1466
www.sfla.biz

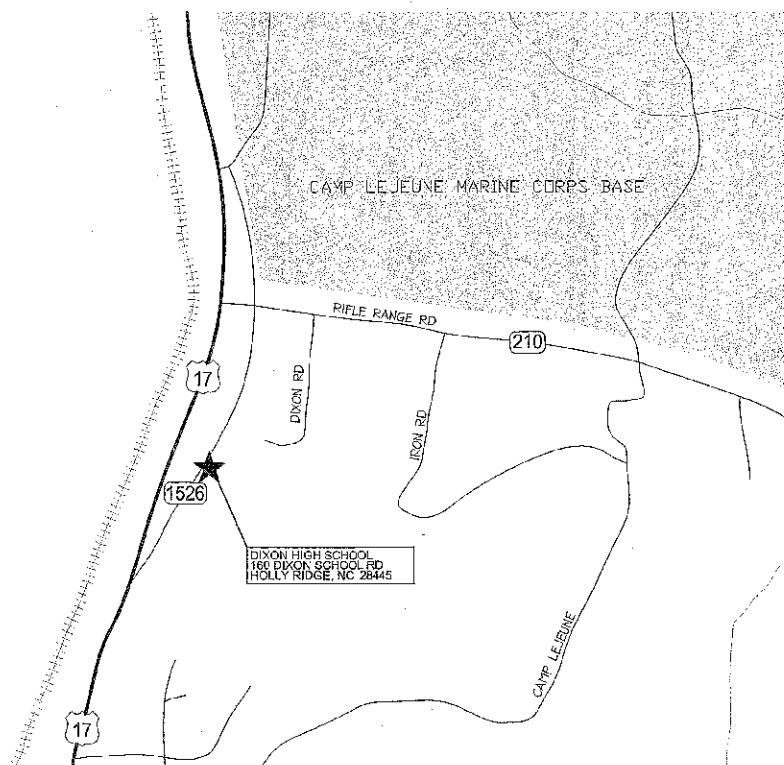
ONslow COUNTY SCHOOLS DIXON HIGH SCHOOL ADDITION

HOLLY RIDGE, NORTH CAROLINA

RENDERING (For Conceptual Representation Only)



VICINITY MAP



DRAWING INDEX

GENERAL	
Q-1	GENERAL NOTES - LEGENDS - ABBREVIATIONS
LIFE SAFETY	
LS-1	BUILDING CODE SUMMARY
LS-2	BUILDING CODE SUMMARY
LS-3	UL DETAILS AND LIFE SAFETY PLAN
CIVIL	
C-1	OVERALL AND SITE PLAN
C-2	GRADING, DRAINAGE, EROSION & SEDIMENTATION CONTROL PLAN
C-3	WATER AND SEWER PLAN
C-4	DETAIL SHEET
ARCHITECTURAL	
A-1	FLOOR PLAN
A-2	ROOF PLAN AND DETAILS
A-3	EXTERIOR ELEVATIONS
A-4	BUILDING SECTION AND DETAILS
A-5	REFLECTED CEILING PLAN AND DETAILS
A-6	INTERIOR ELEVATIONS & DETAILS
STRUCTURAL	
S-1	FOUNDATION PLAN
S-2	ROOF FRAMING PLAN
S-3	FOUNDATION DETAILS
S-4	ROOF FRAMING DETAILS
PLUMBING	
P-1	LEGEND AND SCHEDULES
P-2	PLUMBING PLAN
P-3	WASTE & VENT RISER
P-4	HOT & COLD WATER RISER
P-5	PLUMBING DETAILS
MECHANICAL	
M-1	SCHEDULES, NOTES, LEGENDS, DETAILS
M-2	MECHANICAL FLOOR PLAN
M-3	MECHANICAL DETAILS
ELECTRICAL	
E-1	ELECTRICAL SYMBOLS, FIXTURE SCHEDULE, DETAILS
E-2	DEMOLITION PLAN - BASE BID
E-3	LIGHTING PLAN - BASE BID AND ALTERNATE
E-4	POWER PLANS - BASE BID AND ALTERNATE
E-5	OVERALL CAMPUS PLAN
E-6	PANEL SCHEDULES, POWER RISERS
E-7	ELECTRICAL DETAILS
E-8	ELECTRICAL DETAILS, RISERS
E-9	PENETRATION DETAILS

PARKER & ASSOCIATES
CIVIL ENGINEERS
(910)455-2914

LASATER, HOPKINS, CHANG, PC
STRUCTURAL ENGINEERS
(919)832-5587

PROGRESSIVE DESIGN COLLABORATIVE
PM & E ENGINEERS
(919)790-9989

SET NUMBER:

02/28/2007

DIXON HIGH SCHOOL ADDITION

PROJECT NUMBER: 00543000