



Revisions

Number	Date	Description
08-20-2007		RELEASE FOR PERMIT



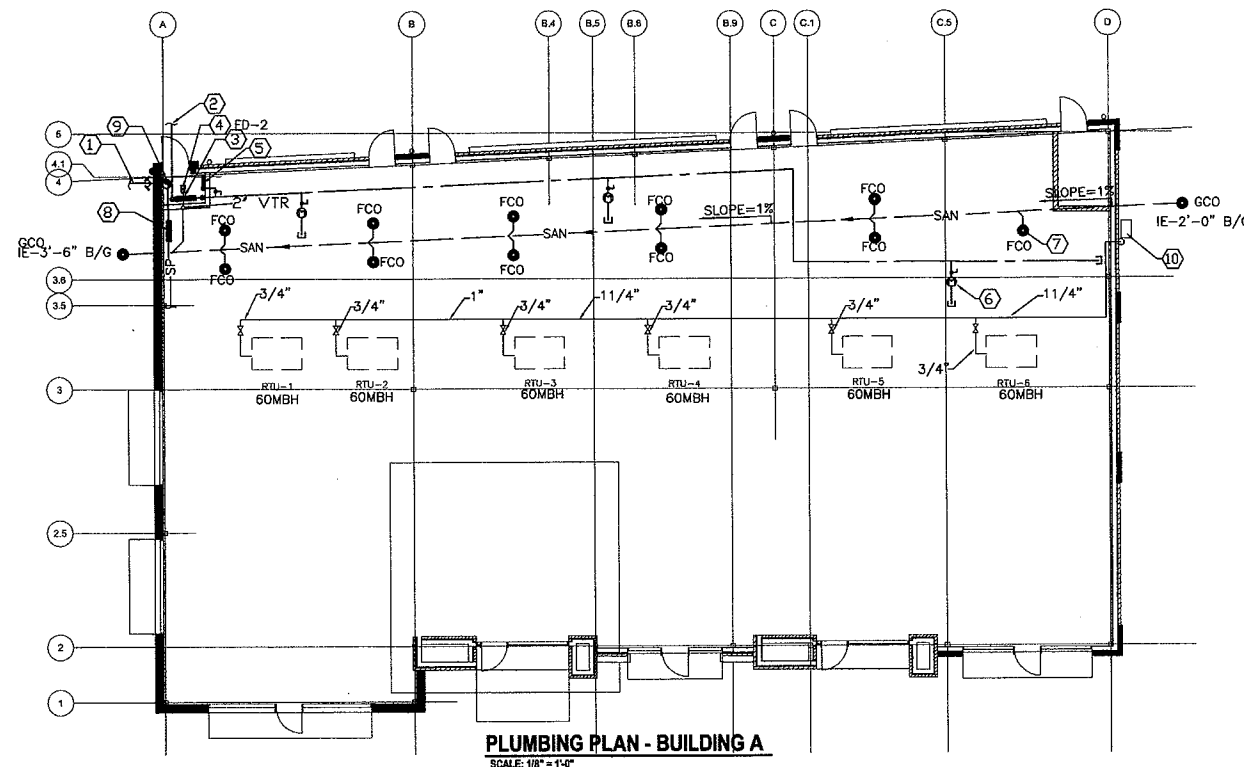
36 Adams  
SIXES ROAD  
CHEROKEE COUNTY, GA

PLUMBING PLANS

RELEASED FOR PERMIT

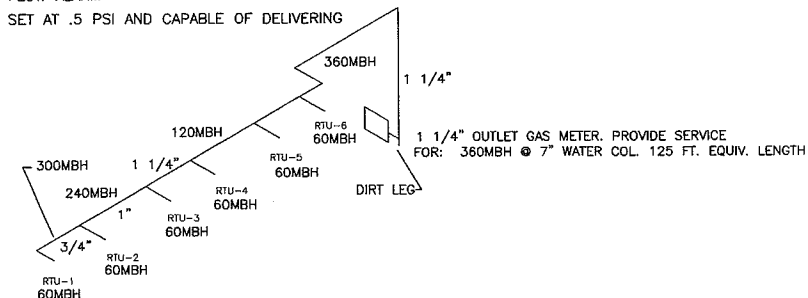
Drawing Number

P1.1



**PLUMBING KEYNOTES:**

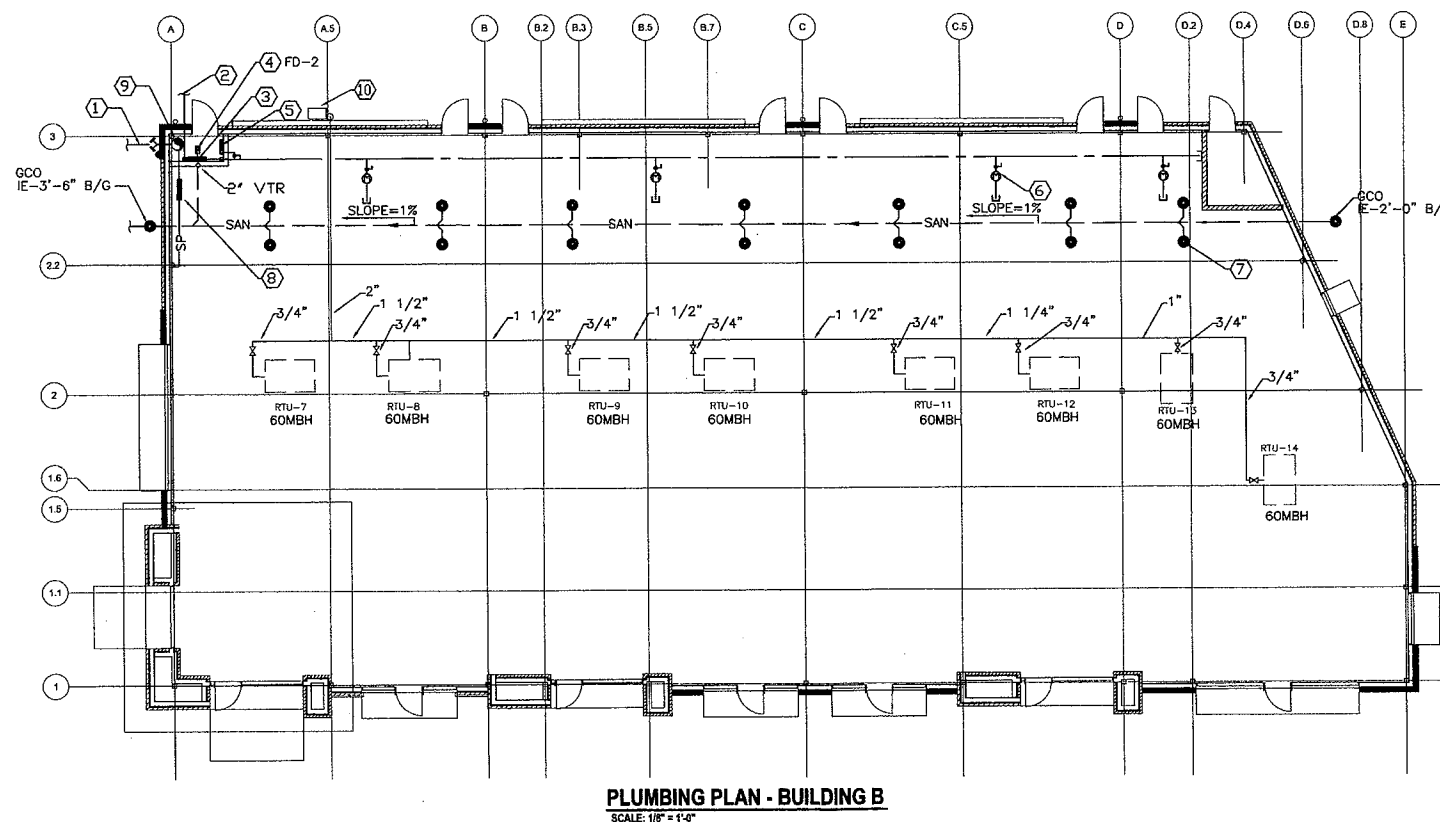
- ① INCOMING 8" FIRE LINE AT APPROX. - 3'-0" BELOW GRADE
- ② 2" INCOMING DOMESTIC WATER
- ③ BACKFLOW PREVENTOR SEE DETAIL 1/P1.0
- ④ 3" FLOOR DRAIN W/ TRAP PRIMER
- ⑤ 1/2" CW DROP TO TRAP PRIMER VALVE MOUNTED ON WALL
- ⑥ 1" REMOTE READ WATER METER W/ 1" CW CAPPED LINE FOR FUTURE, TYPICAL
- ⑦ 4" SANITARY FLOOR CLEANOUT FOR FUTURE CONNECTION, TYPICAL
- ⑧ SPRINKLER SYSTEM FLOOR CONTROL ASSEMBLY
- ⑨ 6" SPRINKLER RISER W/ 2x4 SIAMESE CONNECTION AND WATER FLOW ALARM
- ⑩ GAS METER SET AT .5 PSI AND CAPABLE OF DELIVERING 360 MBH



GAS PIPING RISER DIAGRAM  
N.T.S.

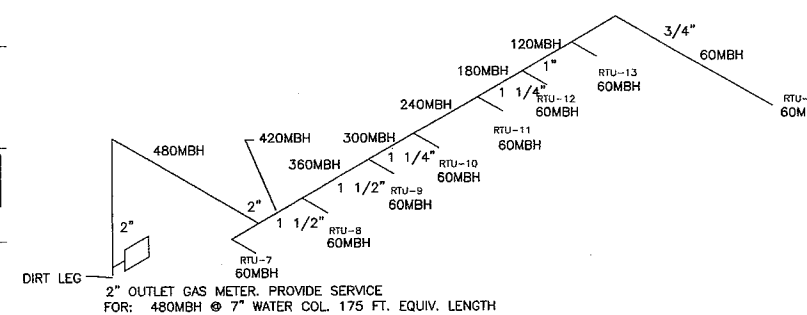
**GENERAL NOTE:**

COORDINATE SPRINKLER RISER AND SIAMESE CONNECTION LOCATIONS WITH STRUCTURAL X-BRACING.

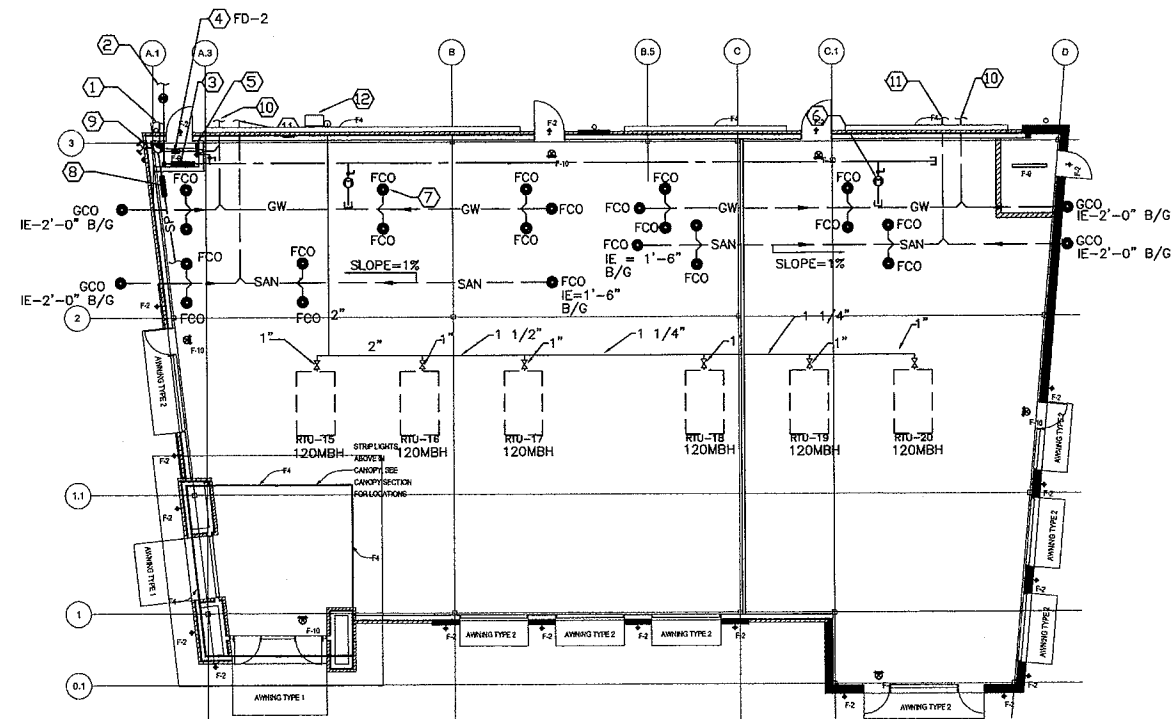


**PLUMBING KEYNOTES:**

- ① INCOMING 8" FIRE LINE AT APPROX. - 3'-0" BELOW GRADE
- ② 2" INCOMING DOMESTIC WATER
- ③ BACKFLOW PREVENTOR SEE DETAIL 1/P1.0
- ④ 3" FLOOR DRAIN W/ TRAP PRIMER
- ⑤ 1/2" CW DROP TO TRAP PRIMER VALVE MOUNTED ON WALL
- ⑥ 1" REMOTE READ WATER METER W/ 1" CW CAPPED LINE FOR FUTURE, TYPICAL
- ⑦ 4" SANITARY FLOOR CLEANOUT FOR FUTURE CONNECTION, TYPICAL
- ⑧ SPRINKLER SYSTEM FLOOR CONTROL ASSEMBLY
- ⑨ 6" SPRINKLER RISER W/ 2x4 SIAMESE CONNECTION AND WATER FLOW ALARM
- ⑩ GAS METER SET AT .5 PSI AND CAPABLE OF DELIVERING 480 MBH



GAS PIPING RISER DIAGRAM  
N.T.S.

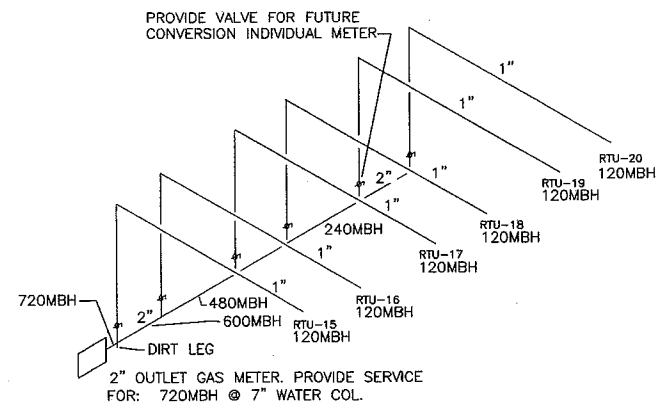


**PLUMBING KEYNOTES:**

- ① INCOMING 8" FIRE LINE AT APPROX. - 3'-0" BELOW GRADE
- ② 2" INCOMING DOMESTIC WATER
- ③ BACKFLOW PREVENTOR SEE DETAIL 1/P1.0
- ④ 3" FLOOR DRAIN W/ TRAP PRIMER
- ⑤ 1/2" CW DROP TO TRAP PRIMER VALVE MOUNTED ON WALL
- ⑥ 1" REMOTE READ WATER METER W/ 1" CW CAPPED LINE FOR FUTURE, TYPICAL
- ⑦ 4" SANITARY FLOOR CLEANOUT FOR FUTURE CONNECTION, TYPICAL
- ⑧ SPRINKLER SYSTEM FLOOR CONTROL ASSEMBLY
- ⑨ 6" SPRINKLER RISER W/ 2x4 SIAMESE CONNECTION AND WATER FLOW ALARM
- ⑩ 6" GREASE WASTE TO 1500 GALLON GREASE INTERCEPTOR FOR CONT. SEE CIVIL.
- ⑪ 4" SAN. IE - -3'-0" FOR CONT. SEE CIVIL
- ⑫ GAS METER SET AT 2 PSI AND CAPABLE OF DELIVERING 720 MBH @ 1.0 PSI DROP.

**GENERAL NOTE:**

COORDINATE SPRINKLER RISER AND SIAMESE CONNECTION LOCATIONS WITH STRUCTURAL X-BRACING.



**GAS PIPING RISER DIAGRAM**  
N.T.S.

**THE CROSSING @ SIXES**



**MINICK ENGINEERING, INC.**  
3585 Habersham at Northlake  
Tucker, Georgia 30084  
TEL (770)-491-7848  
FAX (770)-491-7858  
27085

Revision	Number	Date	Description
1	06-26-2017		RELEASE FOR PERMIT



24 Address  
SIXES ROAD  
CHEROKEE COUNTY, GA

Drawing Title  
**PLUMBING PLANS**

Drawing Status  
RELEASED FOR PERMIT

Drawing Number  
**P1.2**

To Order Plans Go To [WWW.LDIREPRO.COM](http://WWW.LDIREPRO.COM)

